

# INSTALLATION INSTRUCTIONS



## **R1716W - TO SUIT FORD AU CAB CHASSIS WITH 8" TRAY 7/ 99-ON** **PLEASE READ INSTRUCTIONS THROUGH BEFORE YOU BEGIN**

**WARNING :** 1. Do not drill, cut weld or otherwise modify the towbar.  
2. If you are using electric welding on a motor vehicle, always check that the vehicle is not equipped with electronic engine or instrument management equipment. Failure to do so could destroy any onboard computers. If in doubt, check with the vehicle's manufacturer.

Max. Towing Weight: 2300kg

1. Ensure all hardware items have been included.
2. Remove spare wheel.
3. Remove exhaust from three rear most rubber hangers.
4. Lift towbar into position and fit six M12 x 100 bolts, loose plates through chassis and towbar loosely. (additional loose plates maybe required to fit between sidearm and chassis rail to allow for vehicle variation)
5. Fit eight M10 x 30 taptite bolts through towbar and into vertical holes in under side of chassis rail and rear cross member.
6. Tighten all taptite bolts to torque listing.
7. Tighten six M12 x 100 bolts to torque listing. **Ensure bolts are not over tightened as chassis rails may crush**
8. Using holes in tail mounting plate as guide drill 11mm hole.
9. Fit tapped plate on wire through larger hole forward of hole drilled, fit bolt and torque to listing.
10. Refit exhaust and spare wheel.
11. Towbar rating sticker to be conspicuously located on inside rear end of the driver's door. (see diagram below)

**NOTE:** Hayman Reese recommends that you check your towball to ensure it complies to Australian Design Rules.

### **RECOMMENDED ASSEMBLY TORQUE LISTING**

<b>Diameter</b>	<b>Grade 8.8 Bolt</b>
	<b>Nm</b>
M6	9.5
M8	21.7
M10	43.4
M12	77.3
M16	189.8

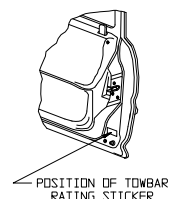
#### **FOR TOWING PURPOSES ONLY**

For towing capacity details please refer to vehicle owner's manual or to the manufacturer. Overloading can void your warranties.

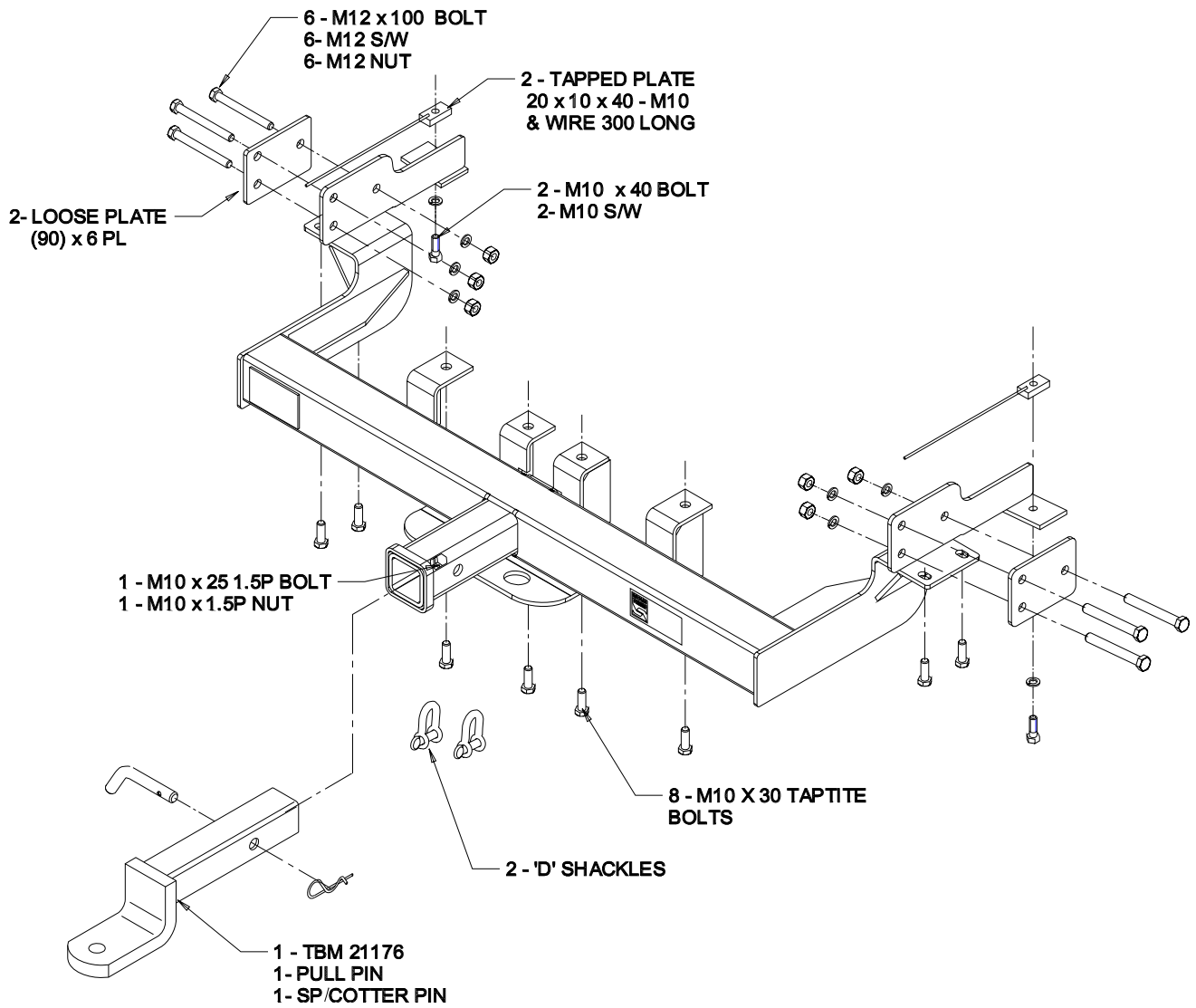
When using Trailer Ballmount part no. 21176 a maximum ball weight of 230kg applies. Hayman Reese recommends the use of a Weight Distributing Hitch according to the following table:

Ball Weight is up to 82kg	use Mini WDH	part no. 4180
Ball Weight is between – 82kg to 150kg	use 350 WDH	part no. 63501
Ball Weight is between – 150kg to 250kg	use 550 WDH	part no. 74504
Ball Weight is between – 250kg to 340kg	use 750 WDH	part no. 76504
Ball Weight is between – 340kg to 455kg	use 1000 WDH	part no. 69004

**PLEASE NOTE:** You must remove the lug unless you are actually towing if it obscures your number plate. Failure to do so may result in a fine.



**R1716 - TO SUIT FORD AU CAB CHASSIS WITH 8" TRAY 7/ 99-ON**



**HAYMAN REESE**  
**PART No: 100023-WL**  
**FORD AU/FG UTE**

**INSTALLATION INSTRUCTIONS**

PLEASE ENSURE THAT INSTRUCTIONS UNDERSTOOD PRIOR TO FITMENT

**Wiring Loom Installation Instructions**

**FORD AU/FG UTE**  
**Part No: 100023-WL**

**Tail Harness Length Required: 1200mm**

**Wiring Loom Installation Time: Approx 10 Mins**

Issue Date 11-08-09

Page 1

Part No: 100023-WL

Hayman Reese (Cequent)  
PO Box 4050, Dandenong South VIC 3164  
Phone 1800 812 017 Email [info@haymanreese.com.au](mailto:info@haymanreese.com.au)

[www.haymanreese.com.au](http://www.haymanreese.com.au)



**HAYMAN REESE**  
**PART No: 100023-WL**  
**FORD AU/FG UTE**

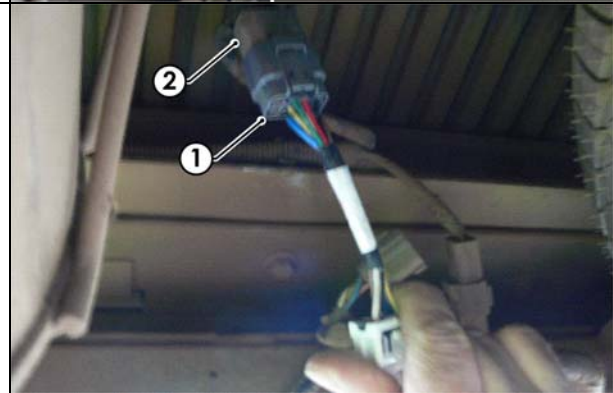
**INSTALLATION INSTRUCTIONS**

**PLEASE ENSURE THAT INSTRUCTIONS UNDERSTOOD PRIOR TO FITMENT**

1. Locate the vehicle 8-way Breakout connector (1).



2. Connect the Trailer Harness Patch (P/N 100023-WL) connector (1) to the 8-way Breakout connector (2).



3. Secure the Trailer Socket (1) to the vehicle with M4 Fasteners.



Issue Date 11-08-09

Page 2

Part No: 100023-WL

Hayman Reese (Cequent)  
PO Box 4050, Dandenong South VIC 3164  
Phone 1800 812 017 Email [info@haymanreese.com.au](mailto:info@haymanreese.com.au)

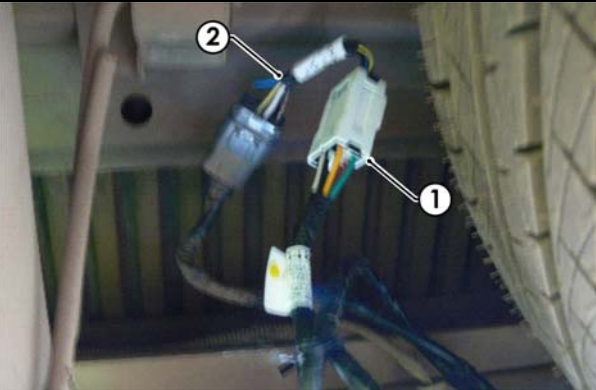
[www.haymanreese.com.au](http://www.haymanreese.com.au)



**HAYMAN REESE**  
**PART No: 100023-WL**  
**FORD AU/FG UTE**

**INSTALLATION INSTRUCTIONS**

**PLEASE ENSURE THAT INSTRUCTIONS UNDERSTOOD PRIOR TO FITMENT**

<p>4. Connect the Tail Harness (Length 1200mm) (1) to the Trailer Harness Patch (2).</p>	
<p>5. Bundle the excess Tail Harness length up and secure to the existing vehicle harnesses with cable ties.</p> <p>6. Test the Tail Harness socket using a light board or multimeter..</p> <p>7. Place instructions in glove box after fitment.</p>	

Issue Date 11-08-09

Page 3

Part No: 100023-WL

Hayman Reese (Cequent)  
PO Box 4050, Dandenong South VIC 3164  
Phone 1800 812 017 Email [info@haymanreese.com.au](mailto:info@haymanreese.com.au)

[www.haymanreese.com.au](http://www.haymanreese.com.au)

