



**HAYMAN REESE**  
*LEADING THE WAY*

**PART No: R2536**  
**Volvo XC70 AWD**

PLEASE ENSURE THAT INSTRUCTIONS ARE UNDERSTOOD PRIOR TO FITMENT



**Volvo BZ XC70 AWD Wagon 12-2007 Production Onwards**  
**Installation Time: Approx 60 Mins Two Person Lift Required.**

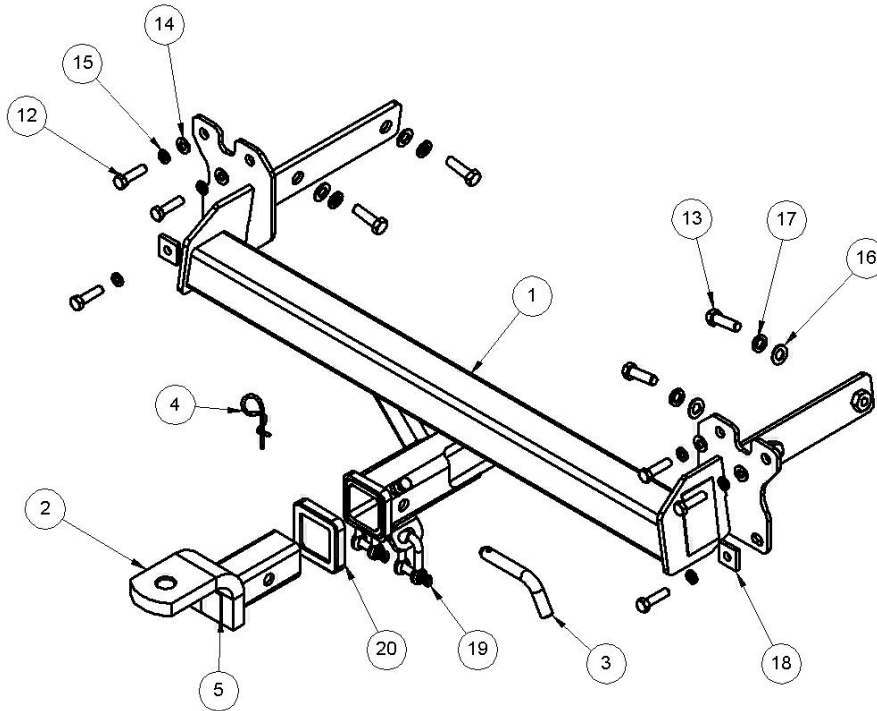
<b>Towbar Installation Instructions</b>	<b>Towbar capacity</b>
	<b>1800Kg Braked</b>
	<b>2100 Kg Braked</b>
<b>Part Number R2536</b>	<b>Maximum Static Ball Load 150Kg</b>
	<b>Maximum Towing Capacity Unbraked 750Kg</b>



**HAYMAN REESE**  
LEADING THE WAY

**PART No: R2536**  
**Volvo XC70 AWD**

PLEASE ENSURE THAT INSTRUCTIONS ARE UNDERSTOOD PRIOR TO FITMENT



**Note: Items 6, 7, 8, 9, 10 & 11 are not shown**

LOCATION	PART NO.	QTY.	DESCRIPTION	ITEM NO.
ASSEMBLY	A02536R-A1	1	VOLVO XC70 ASSEMBLY	1
ASSEMBLY	A21126	1	T.B.MOUNT	2
ASSEMBLY	55010	1	PULL PIN	3
ASSEMBLY	55020	1	SPRING COTTER PIN	4
ASSEMBLY	94603	1	H.R STICKER	5
BOLT PACK	B02536R	1	ASSEMBLY BOLT PACK	6
BOLT PACK	94062	1	BOLT BAG	7
BOLT PACK	95900	1	HR LIFETIME WARRANTY	8
BOLT PACK	R2536-FI	1	FITTING INSTRUCTIONS	9
BOLT PACK	X1800-180	1	DOOR RATING STICKER	10
BOLT PACK	X2100-210	1	DOOR RATING STICKER	11
BOLT PACK	92051	6	M10 x 40 1.5P BOLT	12
BOLT PACK	92107	4	CS M12 X 40 BOLT	13
BOLT PACK	92335	4	Wshr ft 3/8 x 1 x 16 brt z/p	14
BOLT PACK	92336	6	M10 SPRING WASHER	15
BOLT PACK	92338	4	Wshr ft 1/2" x 1-1/8" x 16 z/p	16
BOLT PACK	92339	4	M12 SPRING WASHER	17
BOLT PACK	A402	2	LOOSE PLATE 32x32x6 11mm HOLE	18
BOLT PACK	94572	2	'D' SHACKLE	19
BOLT PACK	94590	1	HITCH BOX COLLAR COVER	20
BOLT PACK	92041	1	M10 x 25 1.5P BOLT	21
BOLT PACK	92310	1	NUT M10 x 1.5P	22



PLEASE ENSURE THAT INSTRUCTIONS ARE UNDERSTOOD PRIOR TO FITMENT

**Warning:**

1. Do not, drill, cut, weld or otherwise modify the towbar.
2. If you are using electric welding on a motor vehicle, **always** check that the vehicle is not equipped with electronic engine or instrument management equipment. Failure to do so could **destroy** any onboard computers. If in doubt, check with the vehicle's manufacturer.
  
1. **General:** Ensure all hardware items have been included refer to assembly diagram.
2. It is recommended that the instructions are read through and completely understood before making any attempt to fit this product.
3. Be wary of any changes to vehicle designs or other accessories that may conflict with the installation of this product.
4. Before drilling ensure that the area is clear of fuel, electrical & other components.
5. All holes drilled into the body panels shall have all burrs & swarf removed then coated with a suitable rust preventative paint.
6. The high tensile fasteners supplied with this product were used to achieve the specified rating. If replacement is required ensure that fasteners of the same rating & quality are used. Contact an authorised **Hayman Reese** dealer if further information is required.
7. Ensure that all hardware is fastened to torque list below check fasteners on regular basis.
8. Towbar load rating sticker provided with this product shall be conspicuously located on inside rear end of the driver's door. **(See diagram below).**
9. Hayman Reese recommends that you check your tow ball to ensure that it complies with the Australian standards **AS 4177.2**.
10. **PLEASE NOTE:** It is advised to remove your lug or tbm when not actually towing so as to produce a clear view of the vehicles registration plate if obscured, and to also provide maximum available departure angle.

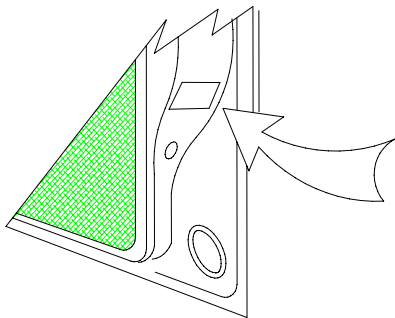
**Tow bar Maintenance and Care.**

Hayman Reese recommends that bolt torque's, as listed below, are routinely and regularly inspected and checked for correct tension. Replace any worn or defective parts.

We recommended to remove Tow Ball Mounts (TBM's, tongues or lugs) when not being used for any considerable length of time.

So as to avoid injury, when not towing it is suggested that the tongue, Pull Pin and R-clip are removed then stored in a safe, clean and dry place, away from excessive moisture.

Hitch Pull Pins and spring "R" clips are regularly checked for proper installation. Replace any worn or defective parts.



Place load rating sticker inside driver's door here

<b>RECOMMENDED ASSEMBLY TORQUE LISTING</b>	
<b>Diameter</b>	<b>Grade 8.8 Bolt</b>
M6	9.5 Nm
M8	21.7 Nm
M10	43.4 Nm
M12	77.3 Nm
M14	146 Nm
M16	189.8 Nm

**FOR TOWING PURPOSES ONLY**  
For towing capacity details please refer to vehicle owner's manual or to the manufacturer. **Overloading can void your warranties.**



PLEASE ENSURE THAT INSTRUCTIONS ARE UNDERSTOOD PRIOR TO FITMENT



**Fig 1**

**11. Remove rear bumper bar skin via**

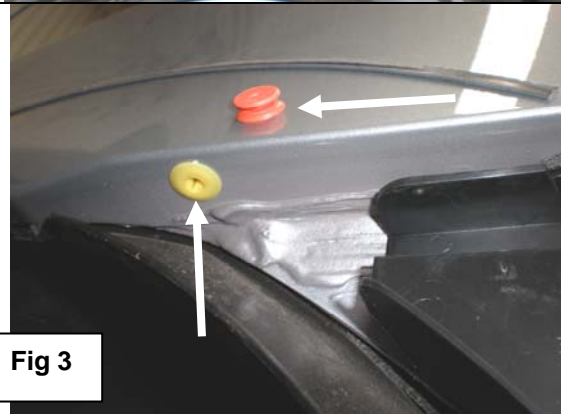
- a. Remove 3 x torx screws from the inner wheel arch retaining the mud guard if fitted see fig 1.
  
- b. Remove 1 x torx screw from inner wheel arch each side of the vehicle see fig 1.



**Fig 2**

**12. Remove rear bumper bar skin via**

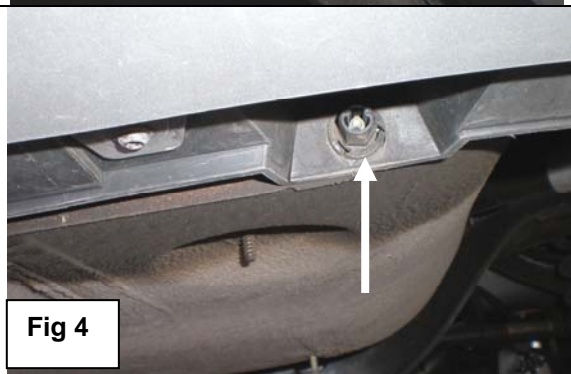
- a. Remove trim around wheel arches caution must be taken so not to damage retaining buttons underneath see fig 2.
- b. Some variant have a glue strip at the top of the trim ensure that this is kept free from debris so optimum adhesiveness is achieved while refitting.



**Fig 3**

**13. Remove rear bumper bar skin via**

- a. Remove 2 x screws in the vertical plane each side of wheel arch see fig 3.
- b. This is the only reason that the trim around the wheel arch is removed to gain access to the screw.



**Fig 4**

**14. Remove rear bumper bar skin via**

- a. Remove 2 x nuts from underside of the bumper bar see fig 4.



PLEASE ENSURE THAT INSTRUCTIONS ARE UNDERSTOOD PRIOR TO FITMENT



Fig 5

15. **Remove rear bumper bar skin via**
- Remove 2 x torx screws from inside rear tailgate cavity see fig 5.
  - Flex bumper bar skin out at the sides to unclip from retaining clips.
  - Then pull rearward to remove.
  - Disconnect the reverse park assist sensors if fitted.
  - Caution** 2 person lift required some force may be required to remove.
  - Store bumper bar skin on suitable stands so that bumper is not damaged & easy access is granted for bumper cut.

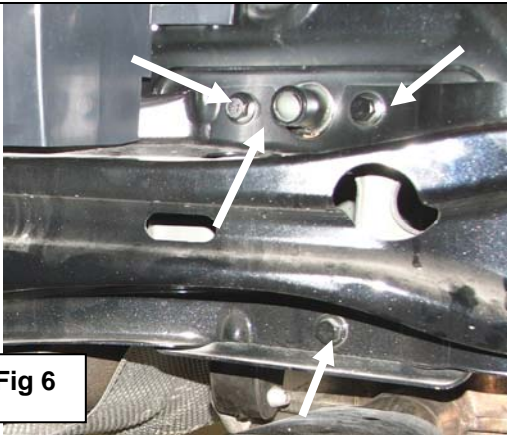


Fig 6

16. **Remove rear Impact beam via**
- Remove 6 x bolts retaining the impact beam 3 each side of the vehicle.
  - Pull down then rearward to remove some force may be required to remove then discard the beam.
  - Remove plastic bumper brace if fitted then discard
  - Remove the towing eye retaining plate; keep the retaining plate for reinstallation.

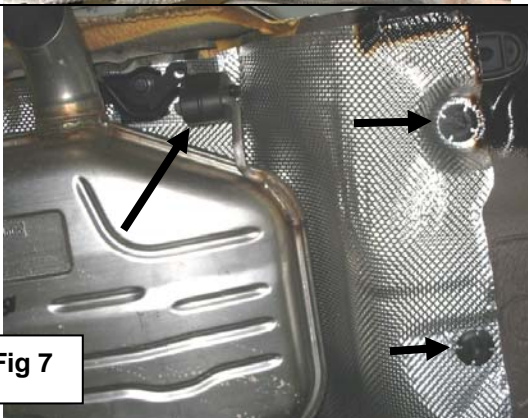


Fig 7

17. **Lower exhaust & heat shield via**
- Lower rear exhaust system from rear most rubber hangers see fig 7.
  - Some models have single system some models have twin system.
  - Crc spray can be used aid removal of rubber hangers.
  - Remove the fasteners that retain heat shield to vehicle body.
  - Let exhaust system & heat shield hang a wedge may be required to gain optimum access to chassis rails.

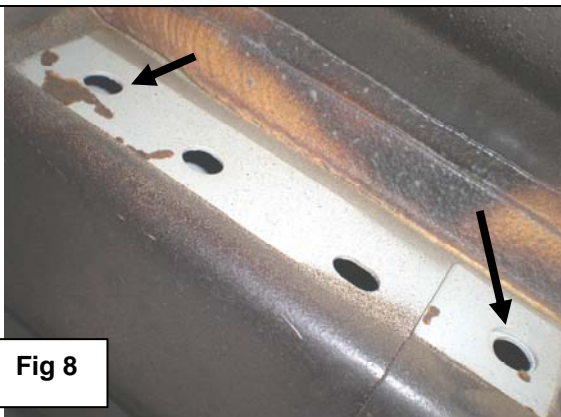


Fig 8

18. **Fitment of towbar to the vehicle via**
- Remove black rubber strips that cover existing holes on each chassis rail see fig 8.
  - Offer towbar to the vehicles sub frame so that the captive nuts on the side arms align with existing holes see fig 8.
  - Fasten loosely with M12 bolts & washers supplied.



PLEASE ENSURE THAT INSTRUCTIONS ARE UNDERSTOOD PRIOR TO FITMENT

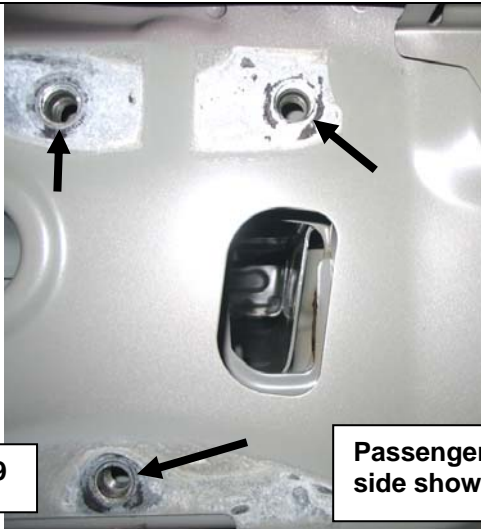


Fig 9

Passenger side shown

**19. Fitment of towbar to the vehicle via**

- a. Ensure that the holes in the rear mounts of the towbar align with the captive nuts on the rear panel of vehicle see fig 9.
- b. Ensure that the towing eye retaining plate is refitted over the top of towbar side plate see fig 10.
- c. Fasten with M10 bolts, loose plates & washers provided see assembly diagram for correct component orientation.
- d. Fasten M10 bolts to torque listing.
- e. Cut bumper as per instructions see fig 11.



Fig 10

Driver's side shown

**20. Reconnect reverse park assist**

- a. Reconnect the reverse park assist if fitted see figure 10.
- b. Refit the exhaust system & heat shield in the reverse of steps 17e through to 17 a.
- c. Refit the rear bumper bar in the reverse of steps 15 f through to 15 a.
- d. Fit the tbm 21126 with pull pin & spring cotter pin provided.
- e. Fit M10 D shackles to the chain connection point.
- f. After fitment place these fitting instructions inside the glove box of the vehicle.

Area of bumper bar to be removed Volvo XC70 bumper bar shown. Ensure that all raw edges & burrs are cleaned.

View from inside rear bumper bar. Place masking tape on inside to mark out & prevent damage to outer skin before cutting.

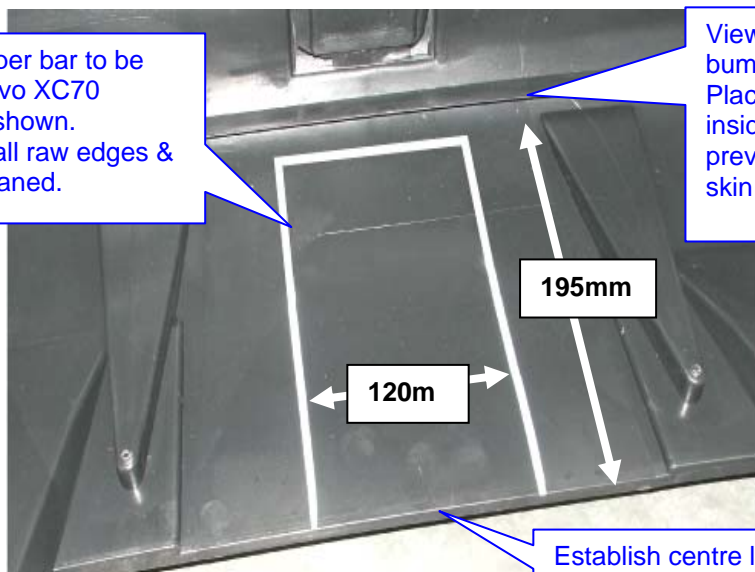


Fig 11

Establish centre line of bumper bar then mark out as shown.