

HAYMAN REESE
PART No: **02923W**
FORD KUGA SUV 02/2012 On

INSTALLATION INSTRUCTIONS

PLEASE ENSURE THAT ALL INSTRUCTIONS ARE UNDERSTOOD PRIOR TO FITMENT
PLACE THESE INSTRUCTIONS IN THE VEHICLES GLOVE BOX AFTER INSTALLATIONS COMPLETE



Installation Time: Approx **40** Mins

Towbar Installation Instructions

Towbar capacity

FORD KUGA SUV 02/2012 On

Part Number 02923W

Max Towing Braked 750 kg

Max Static Ball Load 75 kg

Hayman Reese (Cequent)
PO Box 4050, Dandenong South VIC 3164
Phone 1800 812 017 Email info@haymanreese.com.au

HAYMAN REESE

PART No: 02923W

FORD KUGA SUV 02/2012 On

INSTALLATION INSTRUCTIONS

PLEASE ENSURE THAT ALL INSTRUCTIONS ARE UNDERSTOOD PRIOR TO FITMENT
PLACE THESE INSTRUCTIONS IN THE VEHICLES GLOVE BOX AFTER INSTALLATIONS COMPLETE

Warning:

Do not, drill, cut, weld or otherwise modify the towbar.

If you are using electric welding on a motor vehicle, **always** check that the vehicle is not equipped with electronic engine or instrument management equipment. Failure to do so could **destroy** any onboard computers. If in doubt, check with the vehicle's manufacturer.

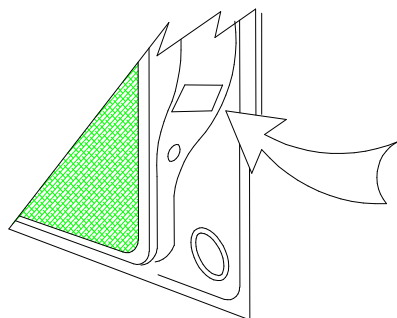
1. **General:** Ensure all hardware items have been included refer to assembly diagram.
2. It is recommended that the instructions are read through and completely understood before making any attempt to fit this product.
3. Be wary of any changes to vehicle designs or accessories that may conflict with the installation of this product.
4. Before drilling ensure that the area is clear of fuel, electrical & other components.
5. All holes drilled into the body panels shall have all burrs & swarf removed then coated with a suitable rust preventative paint.
6. The high tensile fasteners supplied with this product were used to achieve the specified rating. If replacement is required ensure that fasteners of the same rating & quality are used. Contact an authorised **Hayman Reese** dealer if further information is required.
7. Ensure that all hardware is fastened to torque list below check fasteners on regular basis.
8. Towbar load rating sticker provided with this product shall be conspicuously located on inside rear end of the driver's door. **(See diagram below).**
9. Hayman Reese recommends that you check your tow ball to ensure that it complies with the Australian standards **AS 4177.2**.
10. **PLEASE NOTE:** It is advised to remove your lug or tbm when not actually towing so as to produce a clear view of the vehicles registration plate if obscured, and to also provide maximum available departure angle.
11. Pull Pin must be fit in down position.

Tow bar Maintenance and Care.

Hayman Reese recommends that bolt torque's, as listed below, are routinely and regularly inspected and checked for correct tension. Replace any worn or defective parts.

We recommend to remove Tow Ball Mounts (TBM's, or lugs) when not being used for any considerable length of time. So as to avoid injury, when not towing it is suggested that the tongue, Pull Pin and R-clip are removed then stored in a safe, clean and dry place, away from excessive moisture.

Hitch Pull Pins and spring "R" clips are regularly checked for proper installation. Replace any worn or defective parts.



Place load rating sticker
inside driver's door here

RECOMMENDED ASSEMBLY TORQUE LISTING

Diameter Grade 8.8 Bolt

M6	9.5 Nm
M8	21.7 Nm
M10	43.4 Nm
M12	77.3 Nm
M14	146 Nm
M16	189.8 Nm

FOR TOWING PURPOSES ONLY

For towing capacity details please refer to vehicle owner's manual or to the manufacturer. Overloading can void your warranties.

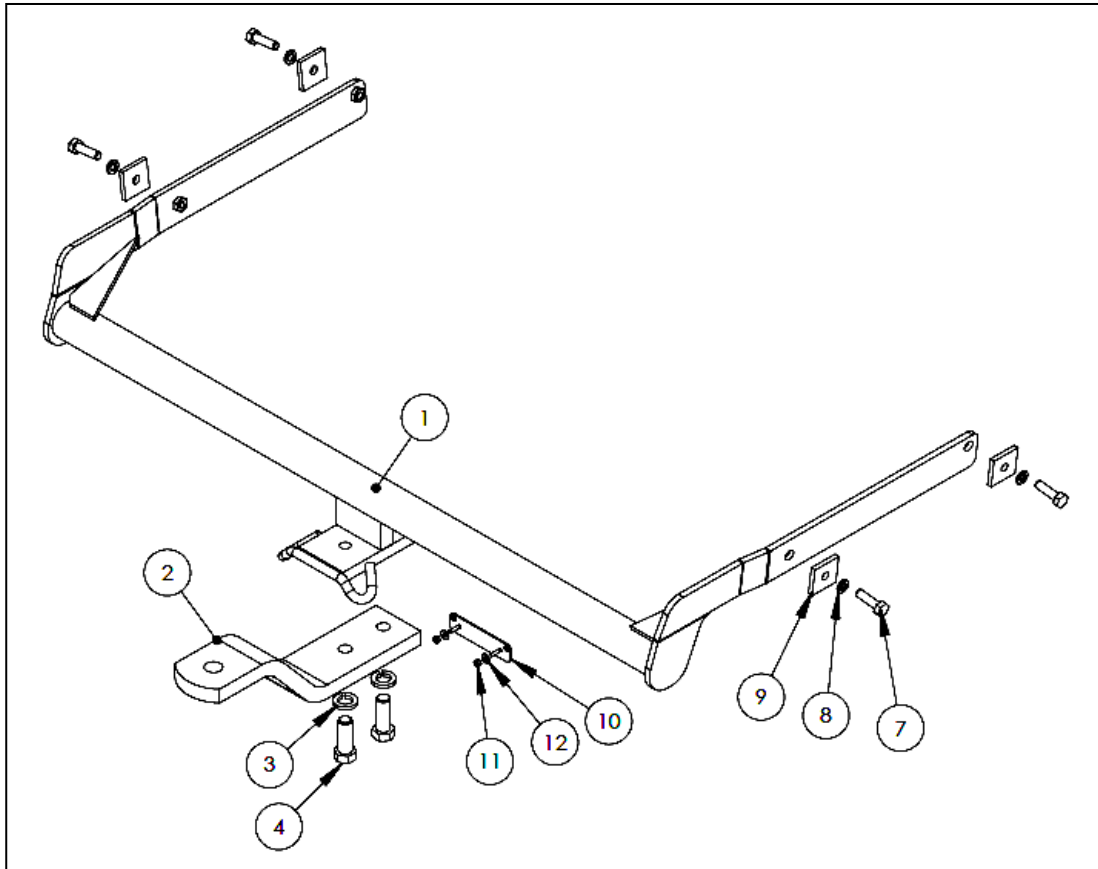
HAYMAN REESE

PART No: 02923W

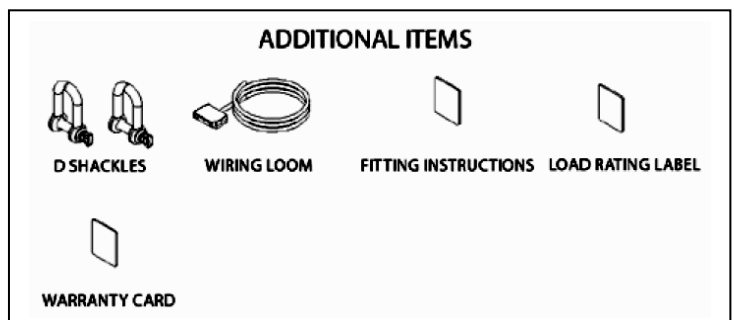
FORD KUGA SUV 02/2012 On

INSTALLATION INSTRUCTIONS

PLEASE ENSURE THAT ALL INSTRUCTIONS ARE UNDERSTOOD PRIOR TO FITMENT
PLACE THESE INSTRUCTIONS IN THE VEHICLES GLOVE BOX AFTER INSTALLATIONS COMPLETE



QTY.	DESCRIPTION	ITEM NO.
1	WELDED ASSEMBLY	1
1	LUG ASSY	2
2	M16 SPRING WASHER	3
2	M16 x 45 2.0P BOLT	4
1	BOLT PACK	5
1	PLASTIC SHEET BAG	6
4	M10 x 35 1.5P BOLT	7
4	M10 SPRING WASHER	8
4	LOOSE PLT 40 x 6 x 40 Ø11	9
1	PLUG BRACKET	10
2	Nut nyloc M4-0.7 z/p	11
2	M5 FLAT WASHER	12



HAYMAN REESE

PART No: 02923W

FORD KUGA SUV 02/2012 On

INSTALLATION INSTRUCTIONS

PLEASE ENSURE THAT ALL INSTRUCTIONS ARE UNDERSTOOD PRIOR TO FITMENT
PLACE THESE INSTRUCTIONS IN THE VEHICLES GLOVE BOX AFTER INSTALLATIONS COMPLETE



REMOVAL OF BUMPER :

1. Open boot / tailgate, locate and remove screw from plastic (tail light) covering,

Separate cover from tail light assembly.
Both LH & RH sides of vehicle.

From inside boot area, remove side wall compartment lid, inside cavity find connection plug to rear of tail light bulb assembly and disconnect.



2. Unscrew plastic holders from rear of tail light assembly.

Remove tail light assemblies from vehicle, place to the side.
Both LH & RH sides of vehicle.



3. Remove two screws from bumper panel, place to the side.
Both LH & RH sides of vehicle.

HAYMAN REESE

PART No: 02923W

FORD KUGA SUV 02/2012 On

INSTALLATION INSTRUCTIONS

PLEASE ENSURE THAT ALL INSTRUCTIONS ARE UNDERSTOOD PRIOR TO FITMENT
PLACE THESE INSTRUCTIONS IN THE VEHICLES GLOVE BOX AFTER INSTALLATIONS COMPLETE



4. From inside wheel arch, remove two torque screws and place to side.



5. Peel back inner wheel arch panel, to expose torque screw.

Remove torque screw and place to side.
Both LH & RH sides of vehicle.



6. Under vehicle, remove four torque screws from bumper support brackets, place to the side.

Both LH & RH sides of vehicle.

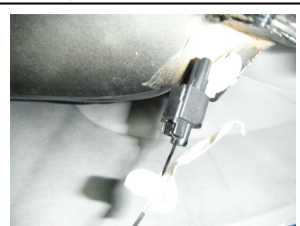
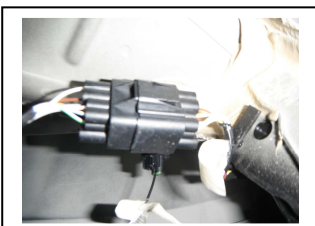
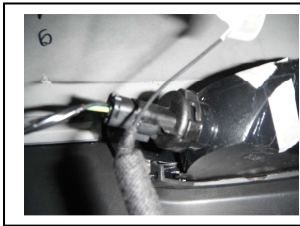
HAYMAN REESE

PART No: 02923W

FORD KUGA SUV 02/2012 On

INSTALLATION INSTRUCTIONS

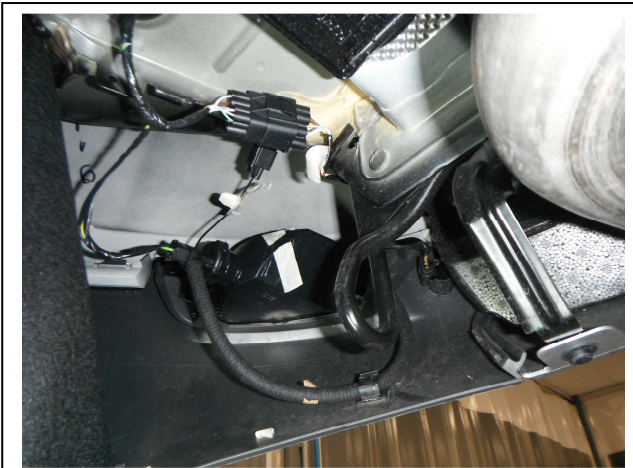
PLEASE ENSURE THAT ALL INSTRUCTIONS ARE UNDERSTOOD PRIOR TO FITMENT
PLACE THESE INSTRUCTIONS IN THE VEHICLES GLOVE BOX AFTER INSTALLATIONS COMPLETE



7. Individually disconnect rear light reflector connection plug.

Disconnect rear sensor connection plugs
(If applicable)

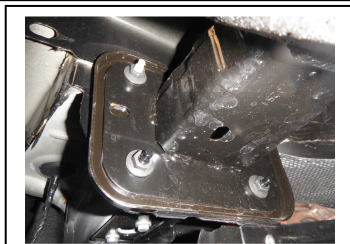
Disconnect other connection plugs.
Both LH & RH sides of vehicle.



8. Make sure all connections are disconnected, before removal of bumper.
Check both LH & RH sides of vehicle.

Slightly pull outwards on sides of bumper, then pull outwards to remove bumper from vehicle.

Place bumper on suitable stand.



REMOVAL OF IMPACT BEAM :

9. Remove foam covering from impact beam, place to side.

Remove three nuts from impact beam and place to side.

Both LH & RH sides of vehicle.

Remove impact beam from vehicle, place to side.

Discard Impact beam assembly.

NOTE:

If removal of towbar is necessary, impact beam assy will need to be re-installed.

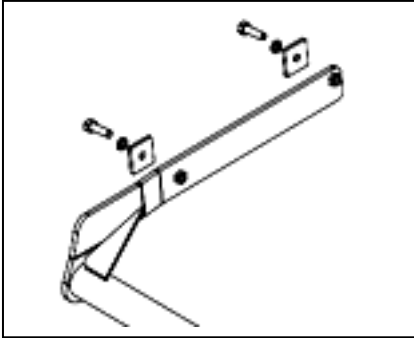
HAYMAN REESE

PART No: 02923W

FORD KUGA SUV 02/2012 On

INSTALLATION INSTRUCTIONS

PLEASE ENSURE THAT ALL INSTRUCTIONS ARE UNDERSTOOD PRIOR TO FITMENT
PLACE THESE INSTRUCTIONS IN THE VEHICLES GLOVE BOX AFTER INSTALLATIONS COMPLETE



10. FITMENT OF TOWBAR :

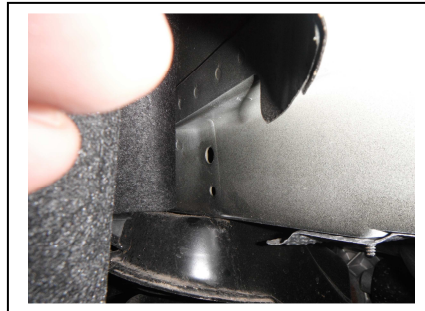
Raise towbar and insert arms into chassis cavity, aligning holes in chassis wall with holes in side arms.

Both LH & RH sides fo vehicle.



11. Using loose plates supplied, insert two M10 bolts and spring washers through chassis holes, secure into nuts in side arm of towbar.
Both LH & RH sides of vehicle.

Tighten all bolts to torque specifications, listed on page 2.



BUMPER CUT OUT :

12. Find centre line of bumper, cover area to be cut with masking tape, to protect surface from scratches.

Mark out area to be cut,

From centre line bottom edge of bumper, measure out sideways 80mm, mark verticle lines to a height of 70mm..

Measure up 90mm, mark horizontal line across. Refer to diagram below

From centre line found, measure out 40mm each side, and join these lines with the 70mm lines marked out previously.

Refer to diagram below

Cut out area with a suitable sawing device, remove all burrs.

HAYMAN REESE

PART No: 02923W

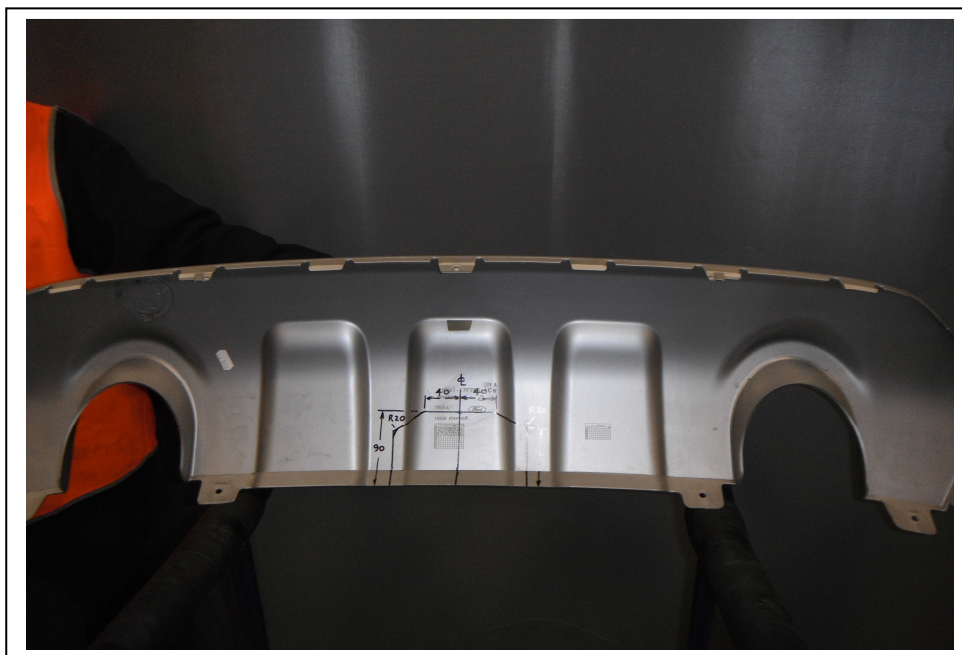
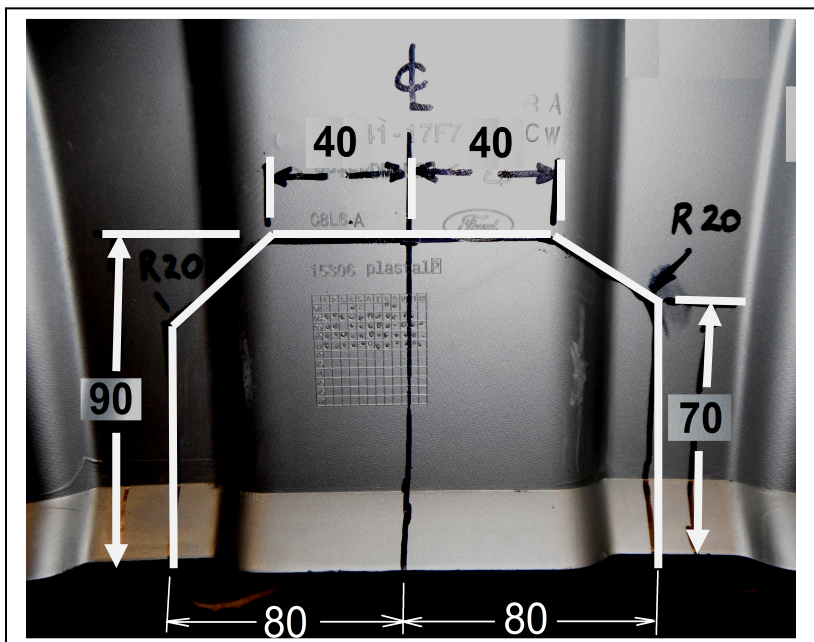
FORD KUGA SUV 02/2012 On

INSTALLATION INSTRUCTIONS

PLEASE ENSURE THAT ALL INSTRUCTIONS ARE UNDERSTOOD PRIOR TO FITMENT
PLACE THESE INSTRUCTIONS IN THE VEHICLES GLOVE BOX AFTER INSTALLATIONS COMPLETE

13. Refit bumper bar in reverse order of removal, making sure all connector plugs are connected.

Attach all accessories supplied to towbar.



HAYMAN REESE
PART No: 100798-WL
FORD KUGA

INSTALLATION INSTRUCTIONS

PLEASE ENSURE THAT INSTRUCTIONS ARE UNDERSTOOD PRIOR TO FITMENT

Wiring Loom Installation Instructions

FORD KUGA

Part No: 100798-WL

Tail Harness Length Required: 1200mm

ECU: 04826

RPA Override Tail Part No: 04943 (If fitted)

Wiring Loom Installation Time: Approx. 40 minutes

Issue Date 04-06-12

Page 1

Part No: 100798-WL

Hayman Reese (Cequent)
PO Box 4050, Dandenong South VIC 3164
Phone 1800 812 017 Email info@haymanreese.com.au

www.haymanreese.com.au



HAYMAN REESE
PART No: 100798-WL
FORD KUGA

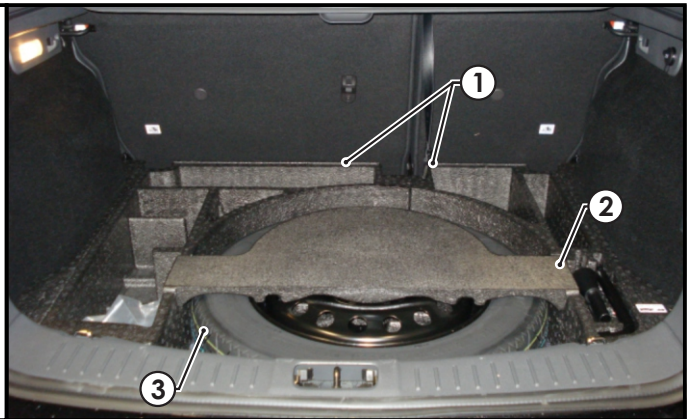
INSTALLATION INSTRUCTIONS

PLEASE ENSURE THAT INSTRUCTIONS ARE UNDERSTOOD PRIOR TO FITMENT

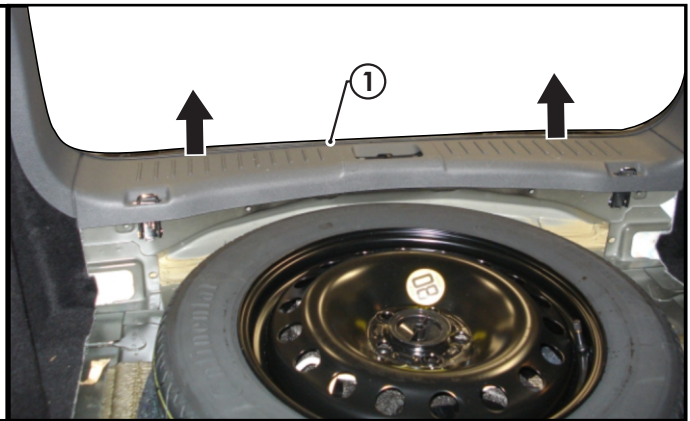
1. In the rear luggage compartment, remove the floor cover carpet (1).



2. Remove the LHS and RHS tool compartments (1).
3. Remove the centre foam support (2) on the spare wheel (3).



4. Remove the rear luggage compartment trim (1) by pulling in an upwards direction.



Issue Date 04-06-12

Page 2

Part No: 100798-WL

Hayman Reese (Cequent)
PO Box 4050, Dandenong South VIC 3164
Phone 1800 812 017 Email info@haymanreese.com.au

www.haymanreese.com.au



HAYMAN REESE
PART No: 100798-WL
FORD KUGA

INSTALLATION INSTRUCTIONS

PLEASE ENSURE THAT INSTRUCTIONS ARE UNDERSTOOD PRIOR TO FITMENT

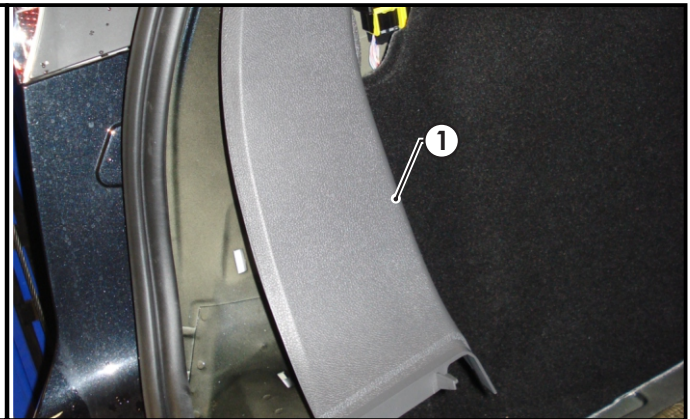
5. On the LHS luggage compartment, remove the access panel (1).

Repeat for the RHS.



6. On the LHS of the luggage compartment, dislodge the rear luggage compartment side trim (1).

Repeat for the RHS.



7. Dislodge the LHS luggage compartment trim (1) enough to gain access to connectors.

Repeat for the RHS.



Issue Date 04-06-12

Page 3

Part No: 100798-WL

Hayman Reese (Cequent)
PO Box 4050, Dandenong South VIC 3164
Phone 1800 812 017 Email info@haymanreese.com.au

www.haymanreese.com.au

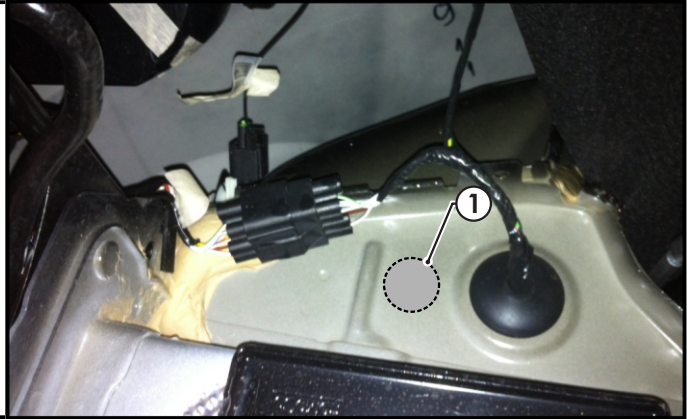


HAYMAN REESE
PART No: 100798-WL
FORD KUGA

INSTALLATION INSTRUCTIONS

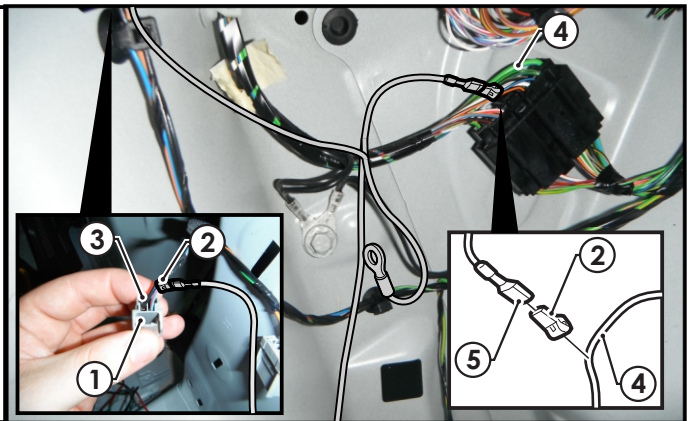
PLEASE ENSURE THAT INSTRUCTIONS ARE UNDERSTOOD PRIOR TO FITMENT

8. In the luggage compartment, on the RHS rear quarter panel, drill a hole (1) to Ø30mm using a step drill.
9. File any rough or sharp edges.

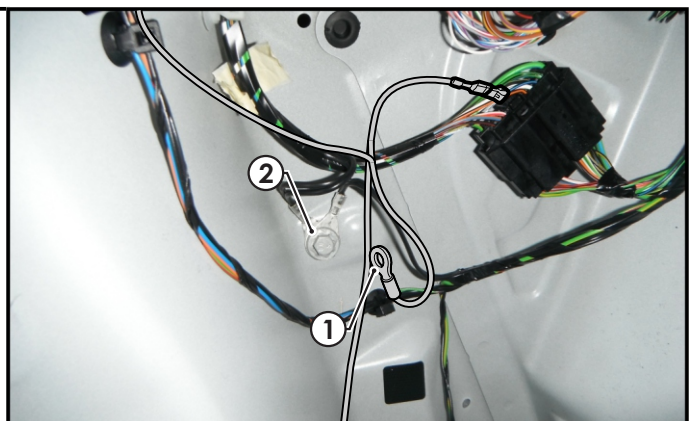


10. In the LHS luggage compartment, disconnect the 2-way tail light connector (1).
11. Following the table below, connect the ezy-tap (2) to the L.IND wire (3) and REVERSE wire (4), then connect the trailer patch terminal (5) to the ezy-tap (2).

Function	Trailer Patch	Vehicle Connector
L.IND	YELLOW / BLACK	GREEN / BLUE
REVERSE	BLACK / WHITE	BLACK / YELLOW



12. Connect the trailer harness ground ring terminal (1) to the vehicle grounding point (2).



Issue Date 04-06-12

Page 4

Part No: 100798-WL

Hayman Reese (Cequent)
 PO Box 4050, Dandenong South VIC 3164
 Phone 1800 812 017 Email info@haymanreese.com.au

www.haymanreese.com.au

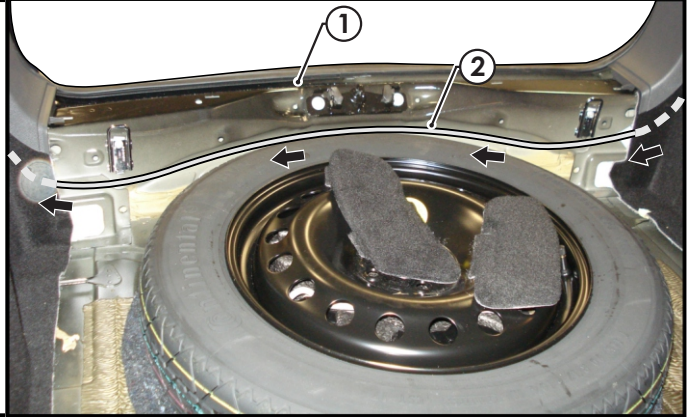


HAYMAN REESE
PART No: 100798-WL
FORD KUGA

INSTALLATION INSTRUCTIONS

PLEASE ENSURE THAT INSTRUCTIONS ARE UNDERSTOOD PRIOR TO FITMENT

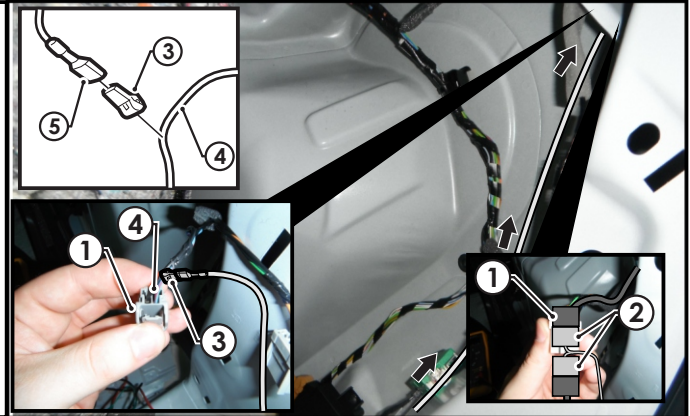
13. Route the trailer harness (1) along the rear luggage compartment panel (2), towards the RHS of the luggage compartment trim.



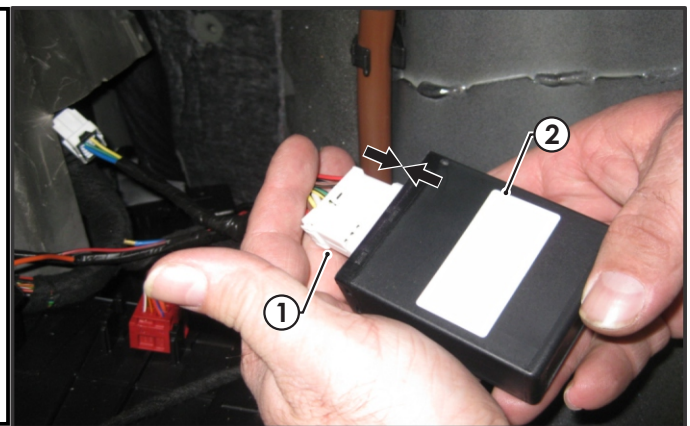
14. On the RHS of the luggage compartment, disconnect the 4-way female tail light connector (1) and patch the trailer harness (2) in between.

15. Following the table below, connect the ezy-tap (3) to the corresponding vehicle wire (4), then connect the trailer patch terminal (5) to the ezy-tap (3).

Function	Trailer Patch	Vehicle Connector
R.IND	GREEN / BLACK	BLUE / RED



16. Connect the trailer harness 12-way connector (1) to the ECU (04826) (2).



Issue Date 04-06-12

Page 5

Part No: 100798-WL

Hayman Reese (Cequent)
 PO Box 4050, Dandenong South VIC 3164
 Phone 1800 812 017 Email info@haymanreese.com.au

www.haymanreese.com.au

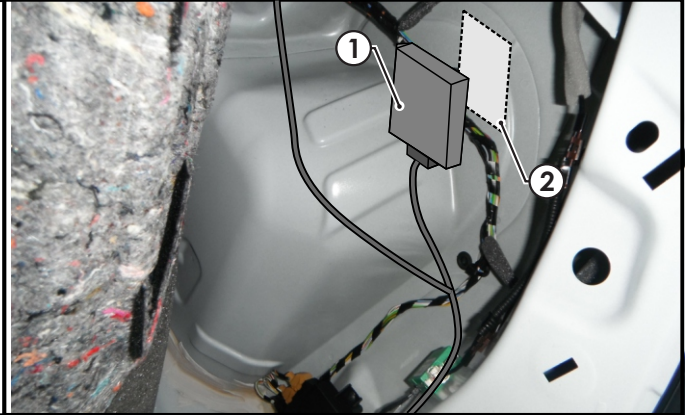


HAYMAN REESE
PART No: 100798-WL
FORD KUGA

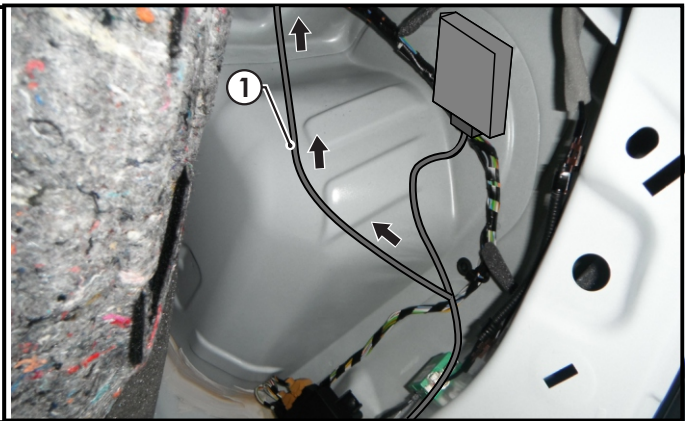
INSTALLATION INSTRUCTIONS

PLEASE ENSURE THAT INSTRUCTIONS ARE UNDERSTOOD PRIOR TO FITMENT

17. On the RHS luggage compartment, using the supplied double sided tape, adhere the ECU (1) to the indicated location (2) on the vehicle sheet metal.

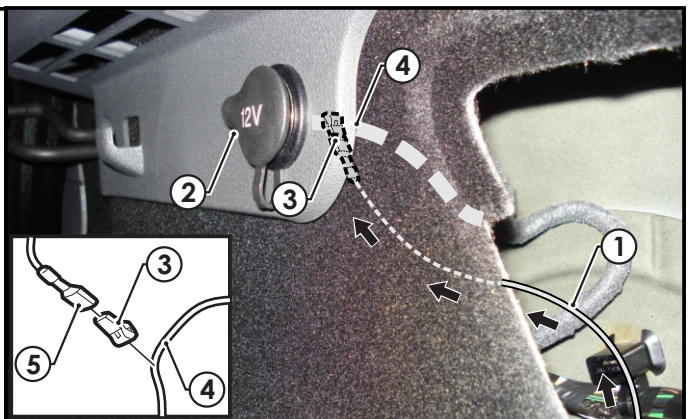


18. Route the 'ORANGE' power wire (1) towards the 12v socket



19. Continue routing the 'ORANGE' power wire (1), behind the 12v socket (2).
20. Following the table below, connect the ezy-tap (3) to the corresponding 12v Socket wire (4), then connect the trailer patch terminal (5) to the ezy-tap (3).

Function	Trailer Patch	Vehicle Connector
POWER	ORANGE	ORANGE



Issue Date 04-06-12

Page 6

Part No: 100798-WL

Hayman Reese (Cequent)
 PO Box 4050, Dandenong South VIC 3164
 Phone 1800 812 017 Email info@haymanreese.com.au

www.haymanreese.com.au

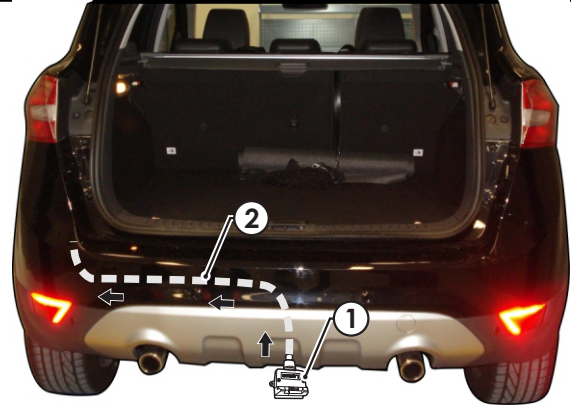


HAYMAN REESE
PART No: 100798-WL
FORD KUGA

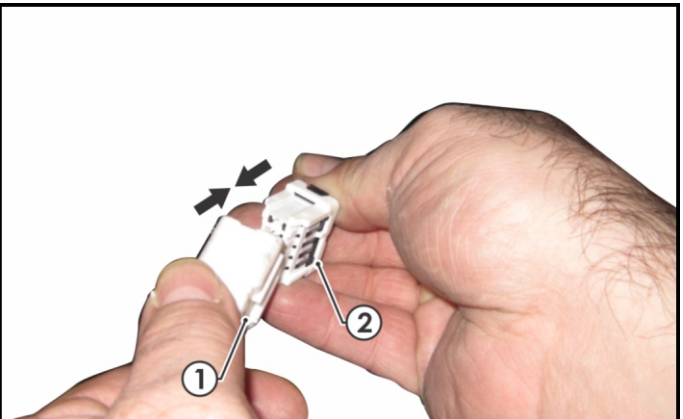
INSTALLATION INSTRUCTIONS

PLEASE ENSURE THAT INSTRUCTIONS ARE UNDERSTOOD PRIOR TO FITMENT

21. Mount the trailer socket (1) to the towbar mounting bracket using M4 fasteners (not supplied).
22. Route the tail harness (tail length 1200mm) (2) towards and up through the previously drilled out hole.
23. Ensure the tail harness grommet is seated correctly and makes a good seal.
24. Secure the grommet in place using cable ties (not supplied).



25. Connect the tail harness 8-way connector (1) to the Trailer Patch 8-way mating connector (2).



26. Test the Trailer Harness function using a light board or multimeter.
27. Secure all harnesses using cable ties (not supplied).
28. Re-fit removed parts and secure all fasteners, ensuring there are no squeaks or rattles.
29. Place the instructions in the glove box after fitment.

Issue Date 04-06-12

Page 7

Part No: 100798-WL

Hayman Reese (Cequent)
PO Box 4050, Dandenong South VIC 3164
Phone 1800 812 017 Email info@haymanreese.com.au

www.haymanreese.com.au

