

HAYMAN REESE
PART No: 03224R

INSTALLATION INSTRUCTIONS

PLEASE ENSURE THAT INSTRUCTIONS ARE UNDERSTOOD PRIOR TO FITMENT
PLACE THESE INSTRUCTIONS IN THE VEHICLE'S GLOVEBOX AFTER INSTALLATION IS COMPLETED

Towbar Installation Instructions	Towbar capacity	
LAND ROVER DISCOVERY 5 CL4 TBM KIT		
Part Number 03224R	Max Towing Braked	3500kg
	Max Towing Unbraked	750kg
	Max Static Ball Load	350kg

Warning:

1. Do not, drill, cut, weld or otherwise modify the towbar.

General:

1. Ensure all hardware items have been included refer to assembly diagram.
2. Be wary of any changes to vehicle designs or other accessories that may conflict with the installation of this product.
3. TBM kit compliance plate sticker provided with this product shall be located on towbar adjacent to towbar compliance plate sticker.
4. TBM kit load rating sticker provided with this product shall be conspicuously located on inside rear end of the driver's door. **(See diagram below).**
5. Hayman Reese recommends that you check your tow ball to ensure that it complies with the Australian standards **AS 4177.2.**
6. **PLEASE NOTE:** It is advised to remove your LUG or TBM when not towing so as to produce a clear view of the vehicles registration plate if obscured, and to also provide maximum available departure angle.

Tow bar Maintenance and Care.

We recommended to remove Tow Ball Mounts (TBM's, tongues or lugs) when not being used for any considerable length of time.

So as to avoid injury, when not towing it is suggested that the tongue, Pull Pin and R-clip are removed then stored in a safe, clean and dry place, away from excessive moisture.

Hitch Pull Pins and spring "R" clips are regularly checked for proper installation. Replace any worn or defective parts.

Hayman Reese (Cequent)
PO Box 4050, Dandenong South VIC 3164
Phone 1800 812 017 Email info@haymanreese.com.au

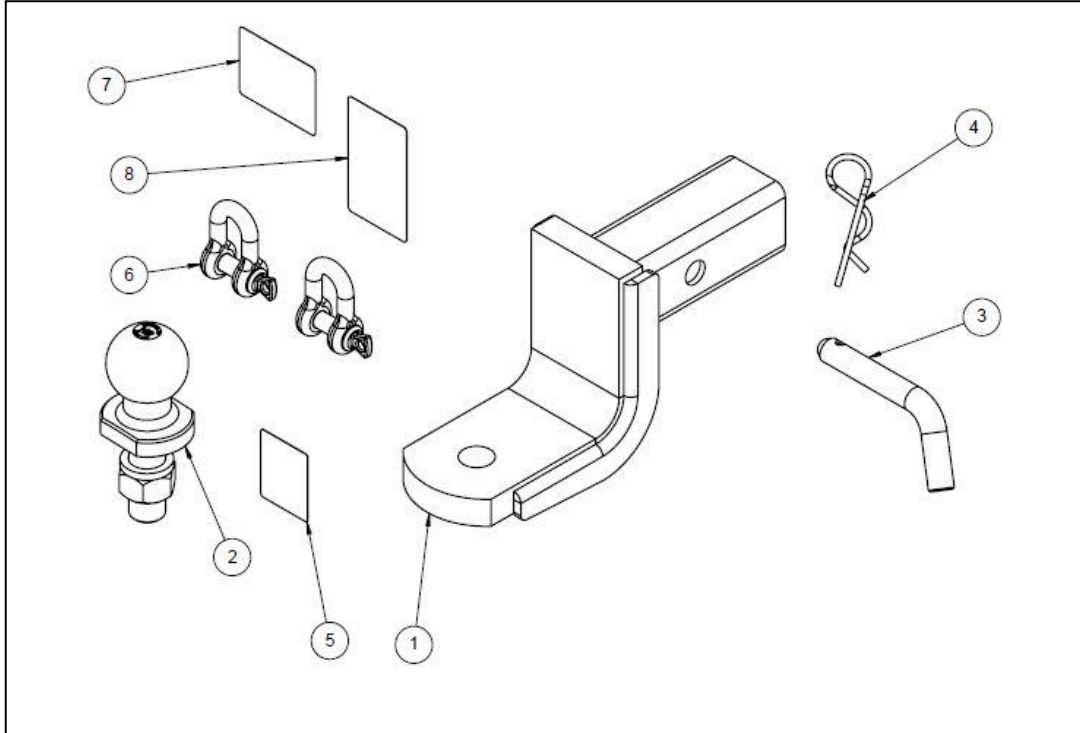
www.haymanreese.com.au



HAYMAN REESE
PART No: 03224R

INSTALLATION INSTRUCTIONS

PLEASE ENSURE THAT INSTRUCTIONS ARE UNDERSTOOD PRIOR TO FITMENT
 PLACE THESE INSTRUCTIONS IN THE VEHICLE'S GLOVEBOX AFTER INSTALLATION IS COMPLETED



ITEM	DESCRIPTION	QTY
1	CLASS 4 TBM	1
2	HR TOWBALL	1
3	PULL PIN	1
4	R -CLIP	1
5	H.R. STICKER	1
6	10mm "D" SHACKLE	2
7	ACRYLIC COMPLIANCE LABEL	1
8	ACRYLIC LOAD RATING LABEL	1

Hayman Reese (Cequent)
 PO Box 4050, Dandenong South VIC 3164
 Phone 1800 812 017 Email info@haymanreese.com.au

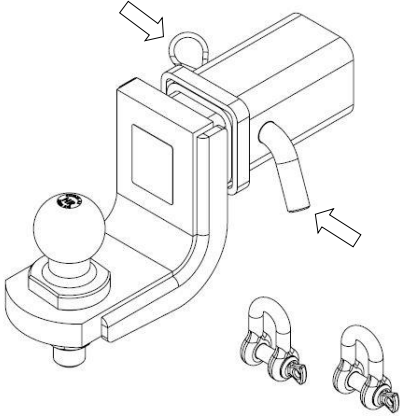
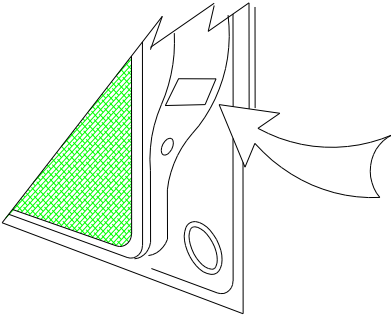
www.haymanreese.com.au



HAYMAN REESE
PART No: 03224R

INSTALLATION INSTRUCTIONS

PLEASE ENSURE THAT INSTRUCTIONS ARE UNDERSTOOD PRIOR TO FITMENT
PLACE THESE INSTRUCTIONS IN THE VEHICLE'S GLOVEBOX AFTER INSTALLATION IS COMPLETED

<p>1. Fit TBM assembly to the towbar hitch box and secure with Pull Pin. Ensure to fit the R-Clip to the Pull Pin.</p> <p>2. Fit the D-Shackles to the chain connection lugs.</p>	
<p>3. Affix the TBM kit compliance label onto the towbar.</p>	
<p>4. Place load rating sticker inside driver's door next to existing towbar load rating label.</p>	

Hayman Reese (Cequent)
PO Box 4050, Dandenong South VIC 3164
Phone 1800 812 017 Email info@haymanreese.com.au

www.haymanreese.com.au

