

**HAYMAN REESE**  
**PART No: 03262RW**  
**SUBARU XV G5X CL4**

## INSTALLATION INSTRUCTIONS

PLEASE ENSURE THAT INSTRUCTIONS ARE UNDERSTOOD PRIOR TO FITMENT  
PLACE THESE INSTRUCTIONS IN THE VEHICLE'S GLOVEBOX AFTER INSTALLATION IS COMPLETED



Installation Time: Approx **115** Mins

### Towbar Installation Instructions

### Towbar capacity

**SUBARU XV G5X CL4**

Part Number **03262RW**

Max Towing Braked **1400** kg

Max Towing Unbraked **650** kg

Max Static Ball Load **140** kg

Tail Length: 1200mm

Tail Length Part No: 04943

Electric brake input location: Near Blue connector

Hayman Reese (Cequent)  
PO Box 4050, Dandenong South VIC 3164  
Phone 1800 812 017 Email [info@haymanreese.com.au](mailto:info@haymanreese.com.au)

[www.haymanreese.com.au](http://www.haymanreese.com.au)



**HAYMAN REESE**  
**PART No: 03262RW**  
**SUBARU XV G5X CL4**

## INSTALLATION INSTRUCTIONS

PLEASE ENSURE THAT INSTRUCTIONS ARE UNDERSTOOD PRIOR TO FITMENT  
PLACE THESE INSTRUCTIONS IN THE VEHICLE'S GLOVEBOX AFTER INSTALLATION IS COMPLETED

### Warning:

1. Do not, drill, cut, weld or otherwise modify the towbar.
2. If you are using electric welding on a motor vehicle, **always** check that the vehicle is not equipped with electronic engine or instrument management equipment. Failure to do so could **destroy** any on board computers. If in doubt, check with the vehicle's manufacturer.
3. If TBM is used in inverted position tow ball may make contact with rear tailgate when lowered, which could cause damage.

### General:

1. Ensure all hardware items have been included refer to assembly diagram.
2. It is recommended that the instructions are read through and completely understood before making any attempt to fit this product.
3. Be wary of any changes to vehicle designs or other accessories that may conflict with the installation of this product.
4. Before drilling ensure that the area is clear of fuel, electrical & other components.
5. All holes drilled into the body panels shall have all burrs & swarf removed then coated with a suitable rust preventative paint.
6. The high tensile fasteners supplied with this product were used to achieve the specified rating. If replacement is required ensure that fasteners of the same rating & quality are used. Contact an authorised **Hayman Reese** dealer if further information is required.
7. Ensure that all hardware is fastened to torque list below check fasteners on regular basis.
8. Towbar load rating sticker provided with this product shall be conspicuously located on inside rear end of the driver's door. **(See diagram below).**
9. Hayman Reese recommends that you check your tow ball to ensure that it complies with the Australian standards **AS 4177.2**.
10. **PLEASE NOTE:** It is advised to remove your LUG or TBM when not actually towing so as to produce a clear view of the vehicles registration plate if obscured, and to also provide maximum available departure angle.

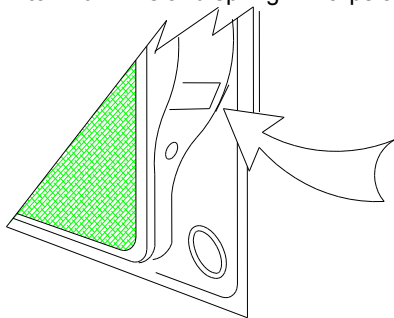
### Tow bar Maintenance and Care.

Hayman Reese recommends that bolt torque's, as listed below, are routinely and regularly inspected and checked for correct tension. Replace any worn or defective parts.

We recommended to remove Tow Ball Mounts (TBM's, tongues or lugs) when not being used for any considerable length of time.

So as to avoid injury, when not towing it is suggested that the tongue, Pull Pin and R-clip are removed then stored in a safe, clean and dry place, away from excessive moisture.

Hitch Pull Pins and spring "R" clips are regularly checked for proper installation. Replace any worn or defective parts.



Place load rating sticker  
inside driver's door here

### **RECOMMENDED ASSEMBLY TORQUE LISTING**

#### Diameter Grade 8.8 Bolt

M6	9.5 Nm
M8	21.7 Nm
M10	43.4 Nm
M12	77.3 Nm
M14	146 Nm
M16	189.8 Nm

### **FOR TOWING PURPOSES ONLY**

For towing capacity details please refer to vehicle owner's manual or to the manufacturer. Overloading can void your warranties.

Hayman Reese (Cequent)  
PO Box 4050, Dandenong South VIC 3164  
Phone 1800 812 017 Email [info@haymanreese.com.au](mailto:info@haymanreese.com.au)

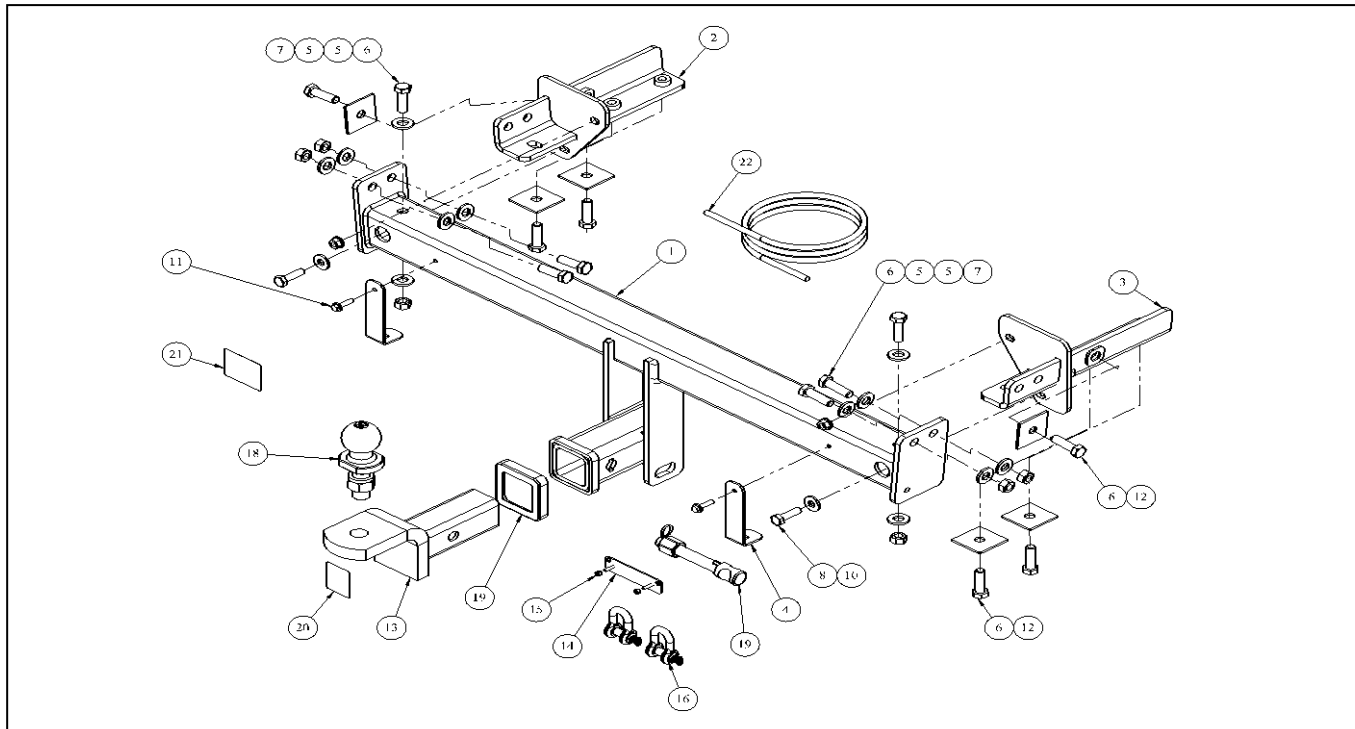
[www.haymanreese.com.au](http://www.haymanreese.com.au)



**HAYMAN REESE**  
**PART No: 03262RW**  
**SUBARU XV G5X CL4**

## INSTALLATION INSTRUCTIONS

PLEASE ENSURE THAT INSTRUCTIONS ARE UNDERSTOOD PRIOR TO FITMENT  
PLACE THESE INSTRUCTIONS IN THE VEHICLE'S GLOVEBOX AFTER INSTALLATION IS COMPLETED



ITEM	DESCRIPTION	QTY
1	WELDED ASSEMBLY	1
2	SIDE ARM LH	1
3	SIDE ARM RH	1
4	BUMPER TAB	2
5	WASHER PLAIN 1/2X1-1/8X16G	12
6	BOLT M12-1.25X40 GR 8.8 Z/P	12
7	NUT HEX HD M12 X 1.25P G8	6
8	SETSCREW HXHD M10X35X1.25G8.8	2
9	FLANGE NUT M10 X 1.25P	2
10	WASHER FT M10 X 25.4 X 3	2
11	TEK SCREW 14-20 HEX HD 22MM	2

ITEM	DESCRIPTION	QTY
12	LOOSE PLATE - COATED	6
13	TRAILER BALL MOUNT	1
14	10MM "D" SHACKLE	2
15	HAYMAN REESE LOGO STICKER	1
16	TOWBALL 50MM FL CHROME 3500KG HR	1
17	HITCH BOX COLLAR COVER	1
18	ACRYLIC COMPLIANCE PLATE	1
19	SMART PIN CLASS 4 ASSEMBLY GOLD	1
20	VE PLUG BRACKET	1
21	NUT NYLON LOCK HEX HD M4X0.7P G8	2
22	WIRING LOOM	1

Hayman Reese (Cequent)  
PO Box 4050, Dandenong South VIC 3164  
Phone 1800 812 017 Email [info@haymanreese.com.au](mailto:info@haymanreese.com.au)

[www.haymanreese.com.au](http://www.haymanreese.com.au)

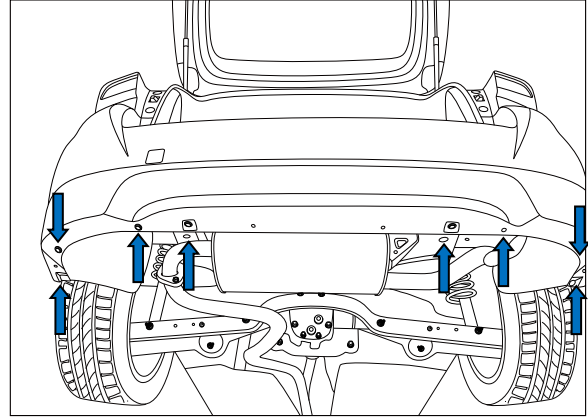


**HAYMAN REESE**  
**PART No: 03262RW**  
**SUBARU XV G5X CL4**

## INSTALLATION INSTRUCTIONS

PLEASE ENSURE THAT INSTRUCTIONS ARE UNDERSTOOD PRIOR TO FITMENT  
PLACE THESE INSTRUCTIONS IN THE VEHICLE'S GLOVEBOX AFTER INSTALLATION IS COMPLETED

1. Remove 8 x Scrivets from underside of bumper.

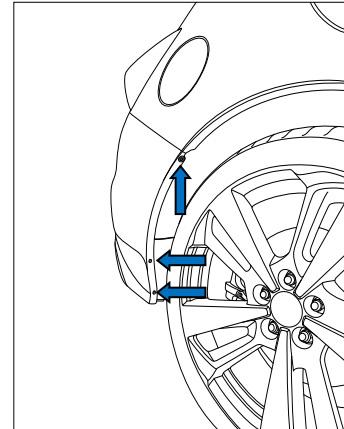


2. Remove 1 x Scrivet inside wheel arch and 2 x hex head screws.

Remove mud flap and set aside.

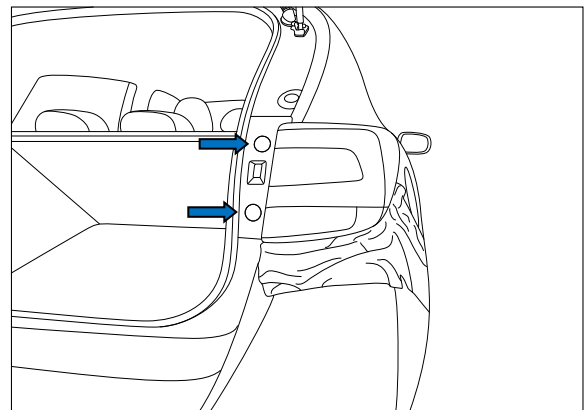
Remove 1 x scrivet from behind mudflap.

Repeat for opposite side.



3. Pop out 2 x Plastic covers on tail lights and remove the exposed 2 x Hex Head Screws. Remove taillights by firmly pulling rearwards of vehicle and disconnect wiring from taillight. Set taillights safely aside.

Repeat for opposite side.



Hayman Reese (Cequent)  
PO Box 4050, Dandenong South VIC 3164  
Phone 1800 812 017 Email [info@haymanreese.com.au](mailto:info@haymanreese.com.au)

[www.haymanreese.com.au](http://www.haymanreese.com.au)



**HAYMAN REESE**  
**PART No: 03262RW**  
**SUBARU XV G5X CL4**

## INSTALLATION INSTRUCTIONS

PLEASE ENSURE THAT INSTRUCTIONS ARE UNDERSTOOD PRIOR TO FITMENT  
PLACE THESE INSTRUCTIONS IN THE VEHICLE'S GLOVEBOX AFTER INSTALLATION IS COMPLETED

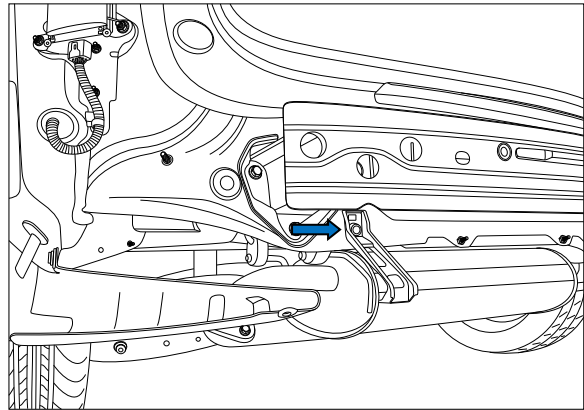
4. Reach inside bumper and disconnect reverse sensor harness (if equipped) from top of impact beam on LHS.

Remove bumper by unclipping both corners near wheel arch. Carefully peel back from corners.

Once fully unclipped disconnect wiring from top of impact beam on the left hand side. Set bumper safely aside.

5. Remove bumper tabs on back panel via 2 x scrivenets.

Discard bumper tabs.



6. Pop out 3 x Rubber hole covers in chassis rail.

Repeat for opposite side.

Hayman Reese (Cequent)  
PO Box 4050, Dandenong South VIC 3164  
Phone 1800 812 017 Email [info@haymanreese.com.au](mailto:info@haymanreese.com.au)

[www.haymanreese.com.au](http://www.haymanreese.com.au)



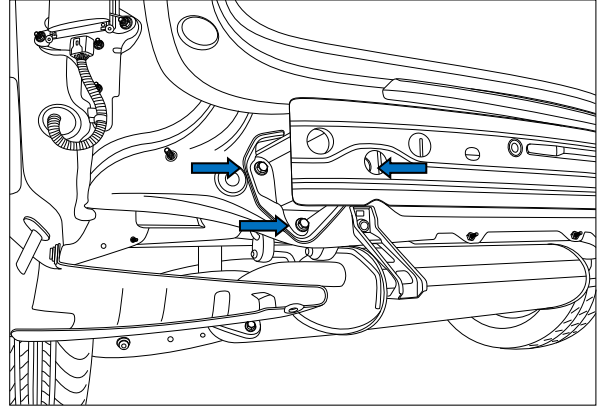
**HAYMAN REESE**  
**PART No: 03262RW**  
**SUBARU XV G5X CL4**

## INSTALLATION INSTRUCTIONS

PLEASE ENSURE THAT INSTRUCTIONS ARE UNDERSTOOD PRIOR TO FITMENT  
PLACE THESE INSTRUCTIONS IN THE VEHICLE'S GLOVEBOX AFTER INSTALLATION IS COMPLETED

7. Remove impact beam via 4 x Hex Head bolts (2 per side) and 2 x Hex Head nuts (1 per side).

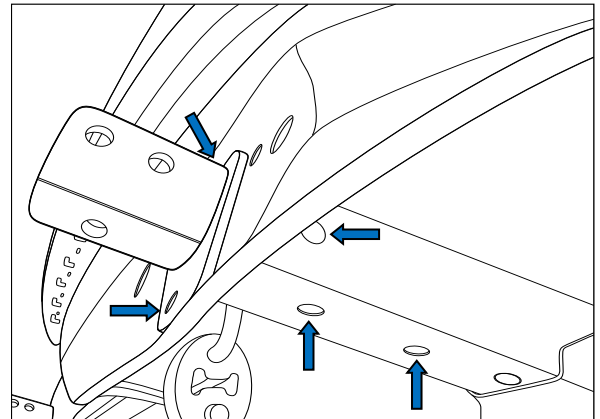
Discard impact beam and fasteners.



8. Insert side arm into chassis rail and loosely secure with 3 x M12 Bolts on chassis rail complete with 1 x M12 Washer plate per Bolt.

Loosely secure side arms to rear panel via 1 x M10 Bolt and 1 x M10 Flange Nut complete with 1 x M10 Washer per Bolt/Nut.

Repeat for opposite side.



9. Secure cross-beam to side arms via 3 x M12 Bolts complete with 2 x M12 Washer and 1 x M12 Nut per Bolt.

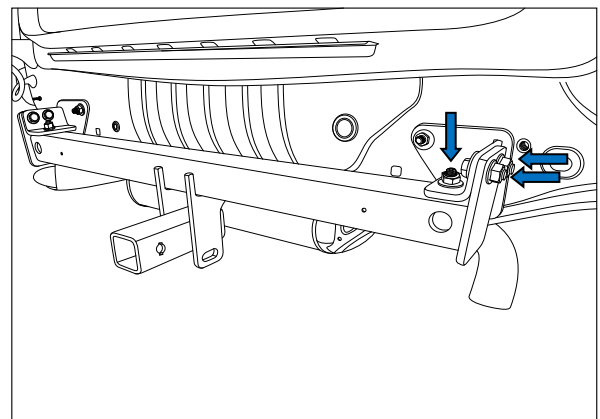
Repeat for opposite side.

Tighten all fasteners to the torques listed below:

M12- 89N.m

M10- 48N.m

10. Attached bumper tabs facing tow bar via 2 x tek screws and tighten (refer to exploded view on Page 3)



Hayman Reese (Cequent)  
PO Box 4050, Dandenong South VIC 3164  
Phone 1800 812 017 Email [info@haymanreese.com.au](mailto:info@haymanreese.com.au)

[www.haymanreese.com.au](http://www.haymanreese.com.au)



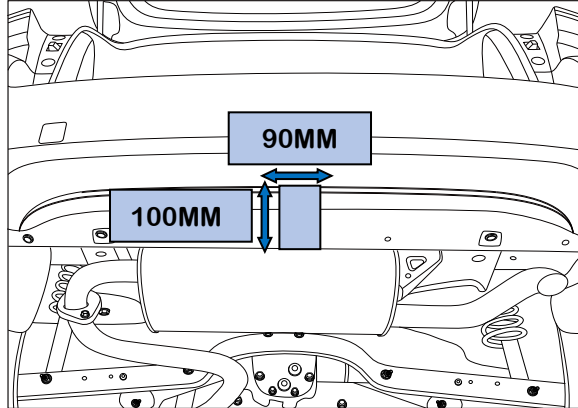


**HAYMAN REESE**  
**PART No: 03262RW**  
**SUBARU XV G5X CL4**

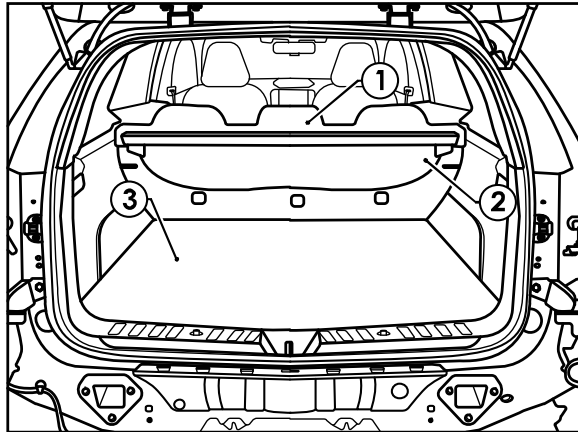
## INSTALLATION INSTRUCTIONS

PLEASE ENSURE THAT INSTRUCTIONS ARE UNDERSTOOD PRIOR TO FITMENT  
PLACE THESE INSTRUCTIONS IN THE VEHICLE'S GLOVEBOX AFTER INSTALLATION IS COMPLETED

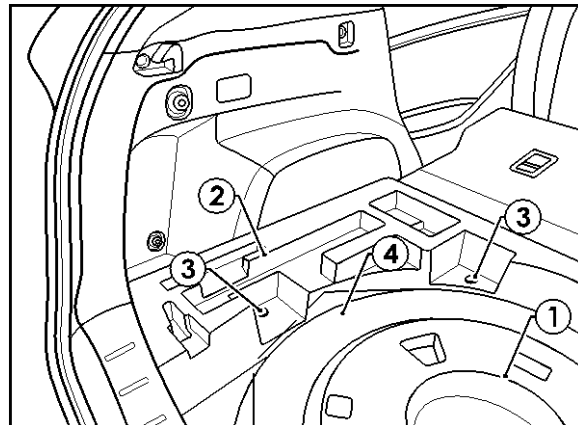
11. Identify the centre of the bumper and cut out a 100mm tall x 90mm wide rectangle, starting from the bottom edge of the bumper, and following the outer edge of the bumper.



12. In the boot, fold down the rear seats (1).  
13. Remove the rear sunshade (2).  
14. Remove the luggage compartment floor carpet (3).



15. Remove all foam trim over the spare wheel (1).  
16. Remove the LHS & RHS luggage compartment foam trim (2) by removing the two trim clips (3) holding it in place.  
17. Remove the spare wheel (4).



Hayman Reese (Cequent)  
PO Box 4050, Dandenong South VIC 3164  
Phone 1800 812 017 Email [info@haymanreese.com.au](mailto:info@haymanreese.com.au)

[www.haymanreese.com.au](http://www.haymanreese.com.au)

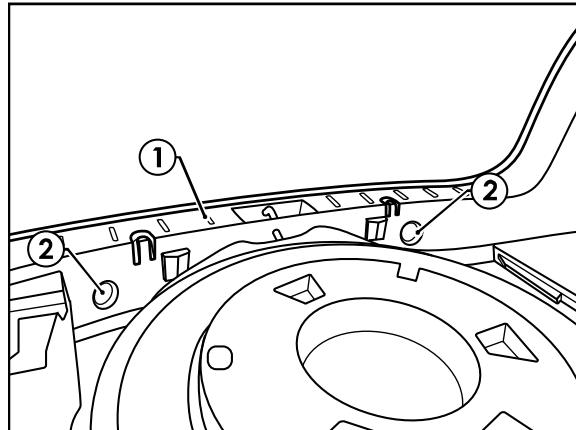


**HAYMAN REESE**  
**PART No: 03262RW**  
**SUBARU XV G5X CL4**

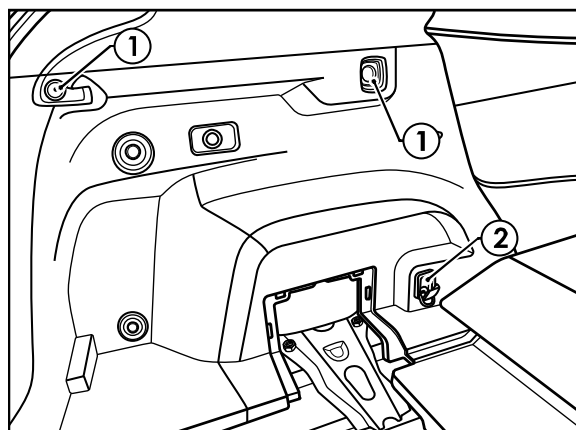
## INSTALLATION INSTRUCTIONS

PLEASE ENSURE THAT INSTRUCTIONS ARE UNDERSTOOD PRIOR TO FITMENT  
PLACE THESE INSTRUCTIONS IN THE VEHICLE'S GLOVEBOX AFTER INSTALLATION IS COMPLETED

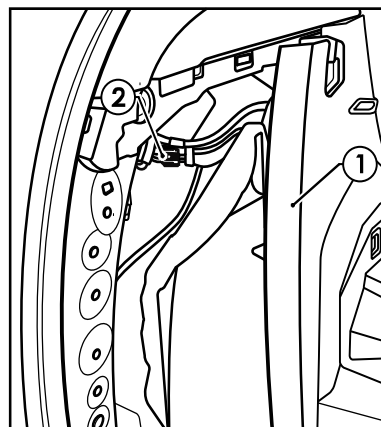
18. Remove the rear boot scuff plate (1) by removing the two trim clips (2) and lifting firmly in an upwards direction.



19. On the LHS rear quarter trim, locate the two phillips head screws (1) and remove.  
20. Using a 10mm socket, remove the bolt (2) securing the luggage hook to the chassis.



21. Dislodge the LHS trim (1) to gain access to the prewire connector (2).



Hayman Reese (Cequent)  
PO Box 4050, Dandenong South VIC 3164  
Phone 1800 812 017 Email [info@haymanreese.com.au](mailto:info@haymanreese.com.au)

[www.haymanreese.com.au](http://www.haymanreese.com.au)



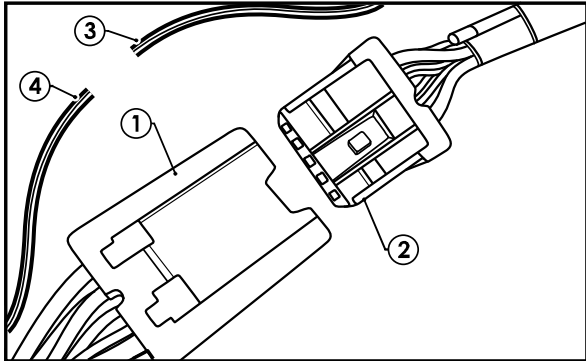


**HAYMAN REESE**  
**PART No: 03262RW**  
**SUBARU XV G5X CL4**

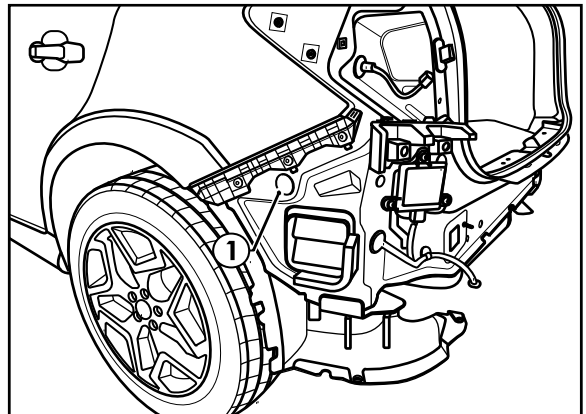
## INSTALLATION INSTRUCTIONS

PLEASE ENSURE THAT INSTRUCTIONS ARE UNDERSTOOD PRIOR TO FITMENT  
PLACE THESE INSTRUCTIONS IN THE VEHICLE'S GLOVEBOX AFTER INSTALLATION IS COMPLETED

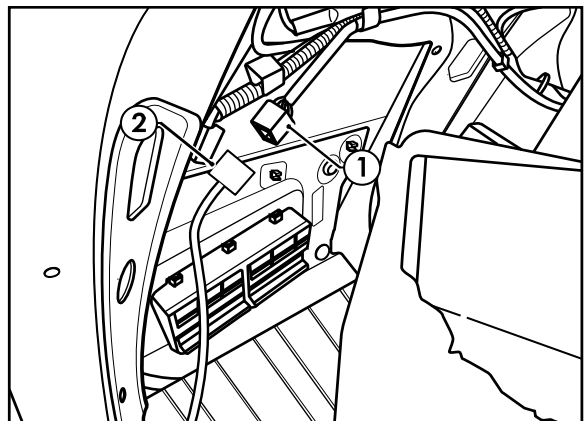
22. Connect the tail harness (tail length 1200mm) 8- way connector (1) to the trailer patch harness (101543-WL) mating 8-way connector (2).
23. Cut-off, crimp the tail harness GREY and GREY/BLACK wires (3) to the trailer patch matching WHITE and GREY/BLACK wires (4).
24. Secure all harness using cable ties.



25. With the rear bumper removed, secure tail harness to towbar.
26. Below the LHS tail light, locate the 30mm blanking grommet (1) and remove.
27. Route tail and patch harness up through chassis rail and previously removed blanking grommet.
28. Seat grommet in 30mm blanking hole and route towards vehicle pre-wire connector.



29. Remove the coloured tape surrounding the prewire connector (1) and connect to patch harness (2).



Hayman Reese (Cequent)  
PO Box 4050, Dandenong South VIC 3164  
Phone 1800 812 017 Email [info@haymanreese.com.au](mailto:info@haymanreese.com.au)

[www.haymanreese.com.au](http://www.haymanreese.com.au)



**HAYMAN REESE**  
**PART No: 03262RW**  
**SUBARU XV G5X CL4**

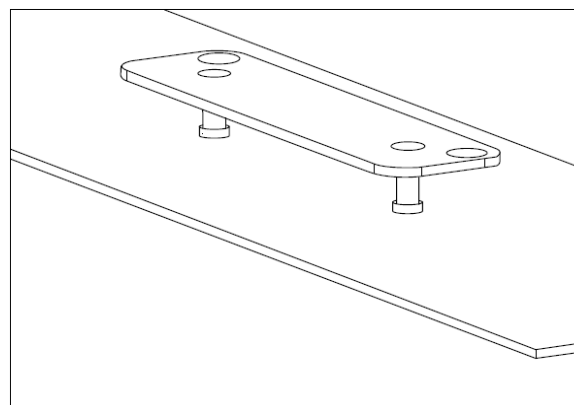
## INSTALLATION INSTRUCTIONS

PLEASE ENSURE THAT INSTRUCTIONS ARE UNDERSTOOD PRIOR TO FITMENT  
PLACE THESE INSTRUCTIONS IN THE VEHICLE'S GLOVEBOX AFTER INSTALLATION IS COMPLETED

30. Test the trailer patch function using a light board or multi-meter.

31. Secure all harness using cable ties (not supplied).

32. Mark out and drill 2 x Ø5mm holes 69mm apart on bumper skin to support plug bracket. Feed bracket through drilled holes prior to reinstalling bumper.



33. Refit removed parts and secure all fasteners, ensuring there are no squeaks or rattles.

34. Align holes below bumper with bumper tabs on towbar. Fix bumper to tabs via 2 X Scrivets.

35. Place the instructions in the glove box after fitment.

Hayman Reese (Cequent)  
PO Box 4050, Dandenong South VIC 3164  
Phone 1800 812 017 Email [info@haymanreese.com.au](mailto:info@haymanreese.com.au)

[www.haymanreese.com.au](http://www.haymanreese.com.au)





# FITTING INSTRUCTIONS

## Smart Pin (55070BL)

• These fitting instructions are supplied to ensure understanding of how the SMART PIN should be fitted and used correctly.

• Once installed, we recommend **ALL** instructions are kept and placed in the vehicle glove box.

**NOTE: Routine maintenance and inspection of the towbar & SMART PIN is required. Regularly inspect for wear and check the tightness of the SMART PIN NUT. Follow instructions below to retighten the nut when necessary.**

**\*Do not tow with your vehicle if the R CLIP or the SMART PIN NUT is loose or missing. Replacement parts are available from your Hayman Reese Distributor.**

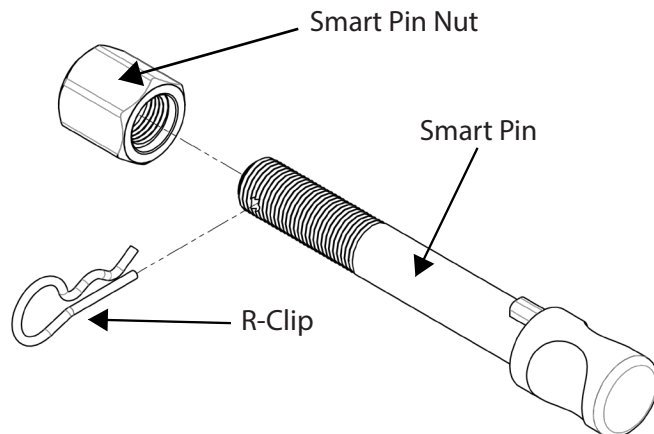


Fig 1. Smart Pin assembly

### STEP 1

Insert Trailer Ball Mount (TBM) into towbar HITCHBOX, aligning hole in TBM SHANK with hole in HITCHBOX (Fig. 2).

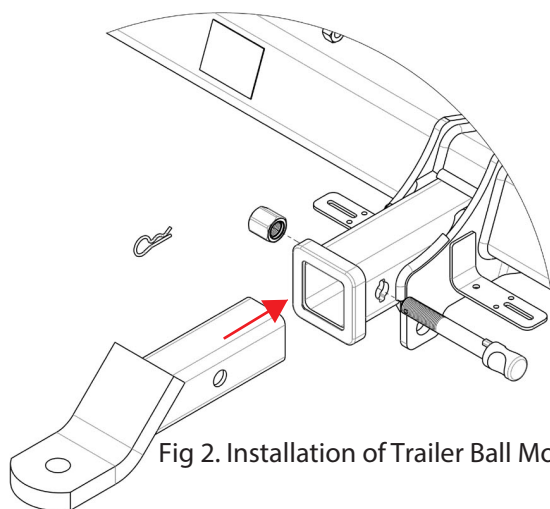


Fig 2. Installation of Trailer Ball Mount

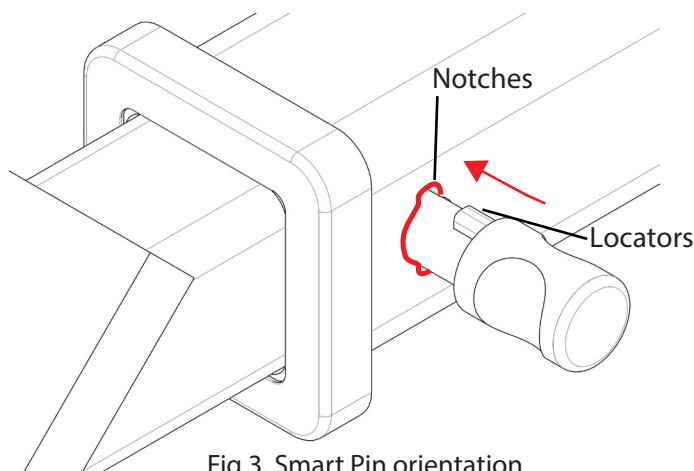


Fig 3. Smart Pin orientation

### STEP 2

Insert SMART PIN through hole in HITCHBOX and hole in TBM SHANK; ensure the LOCATORS are inserted into the NOTCHES in the HITCHBOX (Fig. 3).

### STEP 3

Screw SMART PIN NUT onto SMART PIN; tighten SMART PIN NUT until finger tight, ensuring TBM is restrained from movement.

### STEP 4

Tighten SMART PIN NUT by turning nut a further 1/8th of a turn in the clockwise direction using a 24mm spanner (Fig 4).

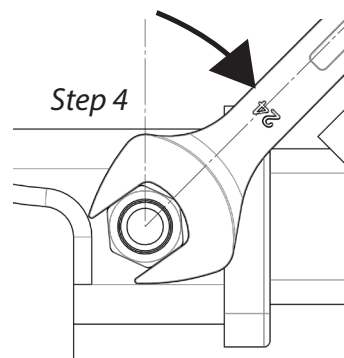


Fig 4. Tightening of Smart Pin Nut

### STEP 5

Install SMART PIN R CLIP through the hole on the SMART PIN (Fig. 1).