



TOWBAR INSTALLATION INSTRUCTIONS

PART NUMBER 03273RW

HOLDEN TRAILBLAZER RG CL4 CN



PRODUCT DETAILS:

Part Number:	03273RW	Maximum Towing Braked:	3500	kg
ECU Number:	WLE70001	Maximum Towing Unbraked:	750	kg
Tail Harness Length Required:	1200 mm	Maximum Static Ball Load:	350	kg
TBM/Lug Part Number:	21247			
Wiring Part Number:	WLL90001			

FITTING DETAILS:

Towbar Installation Time:	30 Mins.	Hayman Reese SmartCODE Solution Required:	NO
Wiring Installation Time:	30 Mins.	RPA Disable/Other:	YES
Total Installation Time:	60 Mins.	Note:	
Bumper Cut Required:	Yes	<ul style="list-style-type: none">Electronic Brake = Brake Prep Connector	



TOWBAR INSTALLATION INSTRUCTIONS

PART NUMBER 03273RW

HOLDEN TRAILBLAZER RG CL4 CN

ENSURE THAT INSTRUCTIONS ARE UNDERSTOOD PRIOR TO FITMENT.

i BEFORE YOU START:

Hayman Reese recommends that instructions are read completely prior to fitment. Check all hardware items have been included refer to assembly diagram. Please ensure this towbar is only fitted to vehicle models as per Hayman Reese application guide (www.haymanreese.com.au).

Bumper Cuts



Vehicle and bumper variations can and do occur during vehicle manufacture after initial towbar design. Fitment of towbar to vehicle and accuracy of bumper cut must be assessed prior to any bumper modifications made. Incorrect bumper cuts are not covered under Hayman Reese warranty.

NOTE: Bumper cuts need to be approached with care, refer to notes below.

- Bumper centreline – where the centreline of the bumper needs to be determined, the installer must assess centre point by measurement of bumper width or determining two symmetrical reference points to give centreline.
- Bumper edge – To assist with accurate bumper cut measurement, reference to the start of the bumper edge is now being commonly used.
 - Measure from bottom edge along bumper and around corner to the 70 mm point (Figure 1).
 - Do not measure from visible bumper front of corner, upwards (Figure 2).

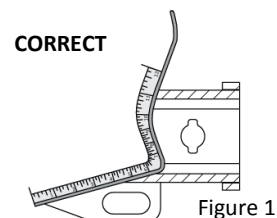


Figure 1

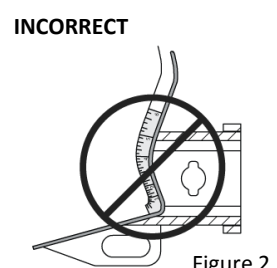


Figure 2

Drilling

- For any required drilling during installation, ensure that the area is clear of fuel, electrical & other components that may be damaged.
- All holes drilled into the body panels shall have all burrs & swarf removed then coated with a suitable rust preventative paint.

Bolts/Fasteners

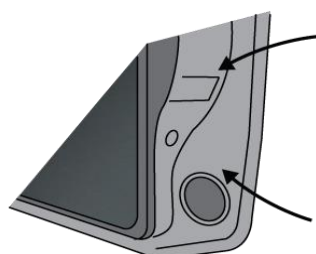
- Ensure that all hardware is fastened to correct torque as specified in this fitting instruction.
- All fasteners supplied with this product are used to achieve a specified clamp loading. If replacement is required ensure that fasteners of the same grade and class are used.



NOTE: Achieving correct torque is critical to proper installation and responsibility of the installer. Towbar failures attributed to tension issues from over tightening or under tightening are not covered by Hayman Reese warranty.

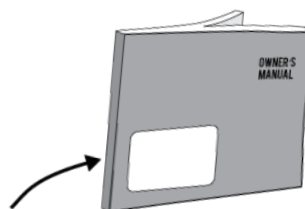
Product Labels

- a. Towbar load rating sticker provided with this product shall be conspicuously located on inside rear end of the driver's door.
- b. Powertrain Control Module (PCM)/Body Control Module (BCM) upgrade warning label will be provided in towbar kit for vehicles as required. Affix warning label in door and owner's handbook.



Place **Load Rating sticker** inside driver's door here

Place **Vehicle PCM/ BCM upgrade warning label** in door AND on front cover of owner's service handbook



WARNING:

Do not, drill, cut, weld or otherwise modify the towbar.

FOR TOWING PURPOSES ONLY - This towbar is designed and tested by Hayman Reese to adhere to ADR 62/02 which provides only for the expected load demands of towing.

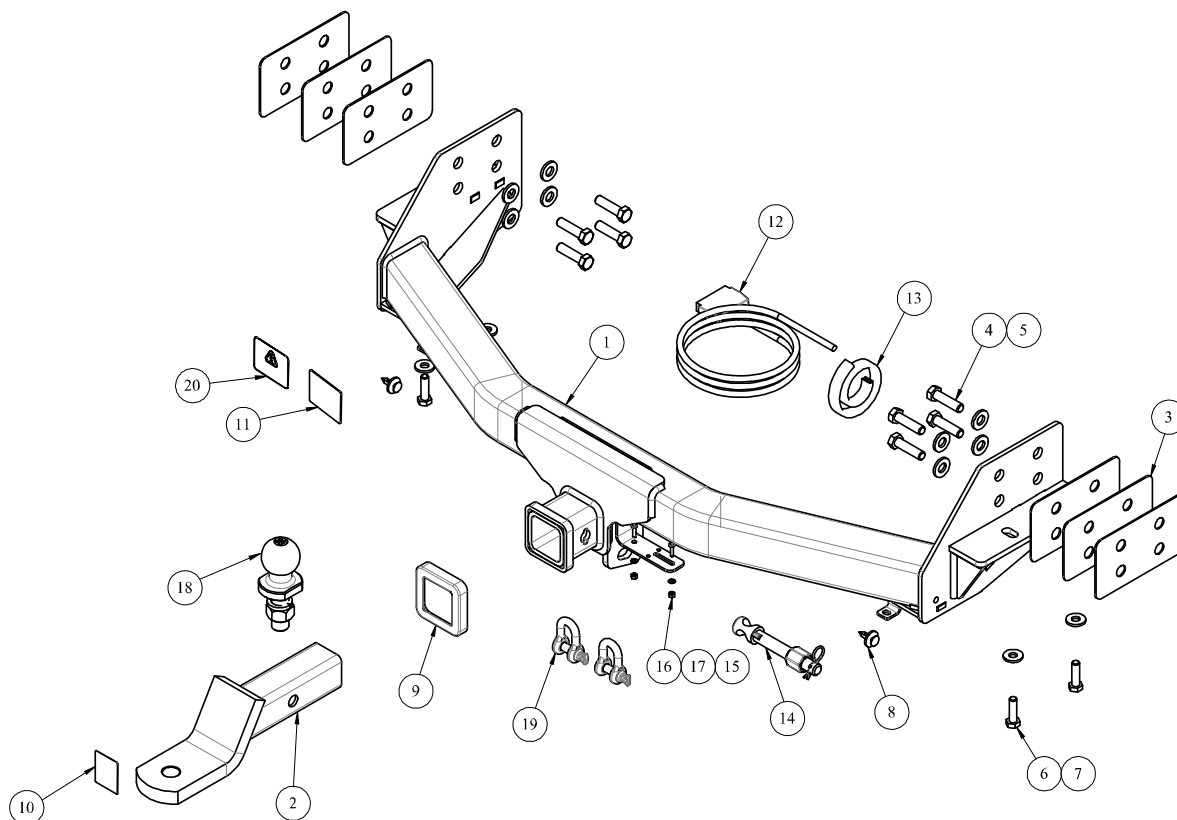


TOWBAR INSTALLATION INSTRUCTIONS

PART NUMBER 03273RW

HOLDEN TRAILBLAZER RG CL4 CN

i TOWBAR ASSEMBLY DIAGRAM



ITEM	DESCRIPTION	QTY
1	TRAILBLAZER WELDED ASSEMBLY	1
2	TRAILER BALL MOUNT	1
3	SHIM 2mm	6
4	SET SCREW HEX HD M12 X 45 X 1.25P	8
5	WASHER PLAIN 1/2X1-1/8X16G	8
6	SET SCREW HEX HD M10x35x1.25P	4
7	WASHER PLAIN M10 X 25 X 3	4
8	SKRIVET - 010 - 0175	2
9	HITCH BOX COLLAR COVER	1
10	HAYMAN REESE LOGO STICKER	1

ITEM	DESCRIPTION	QTY
11	ACRYLIC COMPLIANCE PLATE	1
12	CAN WIRING LOOM COLORADO MY12	1
13	BUMPER TRIM PINCH WELD 580mm	1
14	SMART PIN ASSY CLASS 4 - GOLD	1
15	SCREW PAN HD M4 X 16 X 0.7P G4.6	2
16	NUT NYLON LOCK HEX HD M4X0.7P G8	2
17	M4 WASHER	2
18	HR TOWBALL	1
19	10mm "D" SHACKLE	2
20	CAN TRAILER WARNING LABEL	2

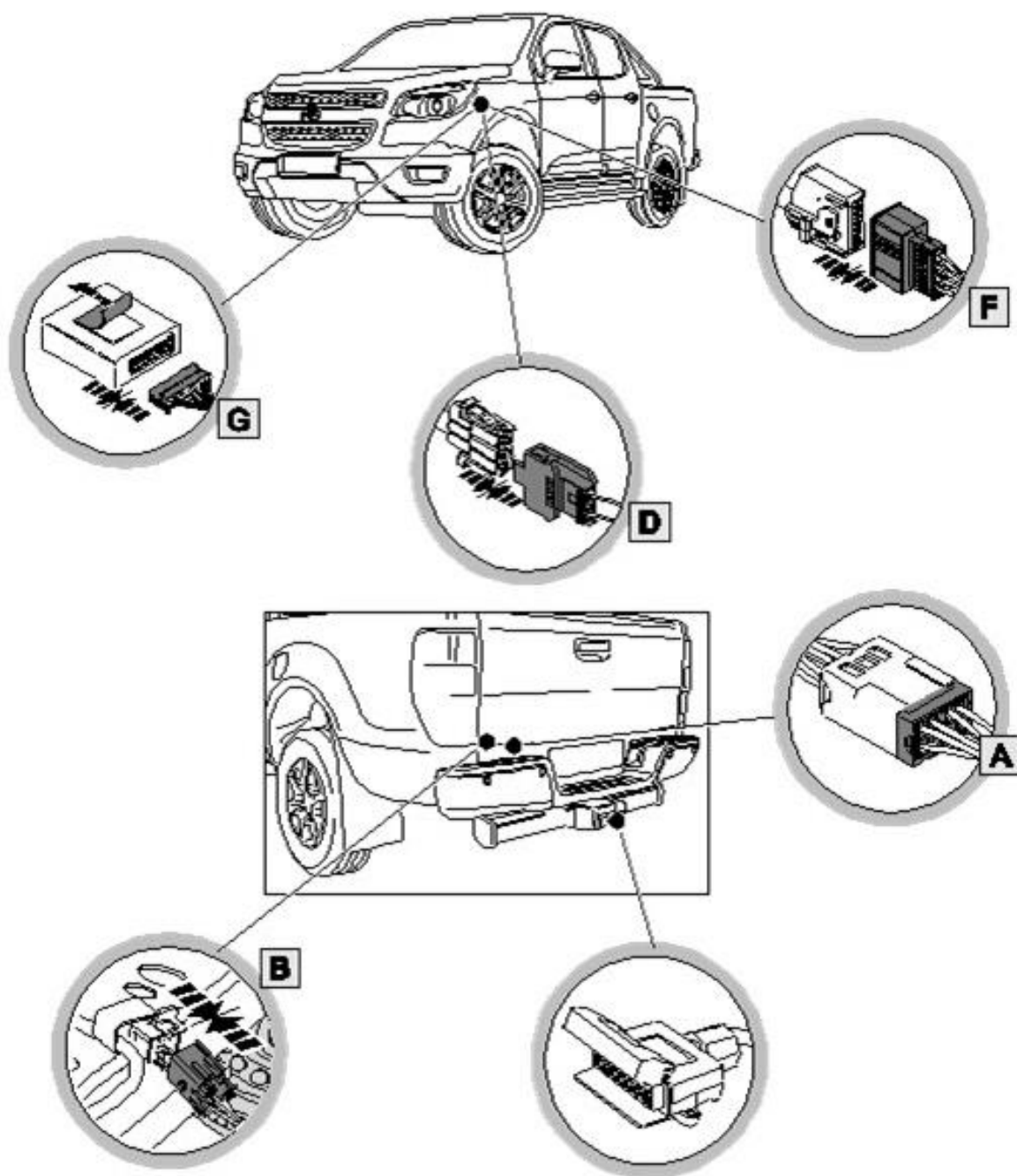


TOWBAR INSTALLATION INSTRUCTIONS

PART NUMBER 03273RW

HOLDEN TRAILBLAZER RG CL4 CN

i WIRING ASSEMBLY DIAGRAM Tub Variant shown for wiring

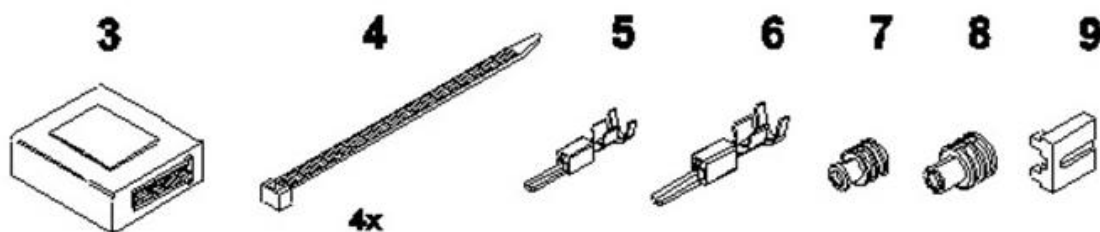
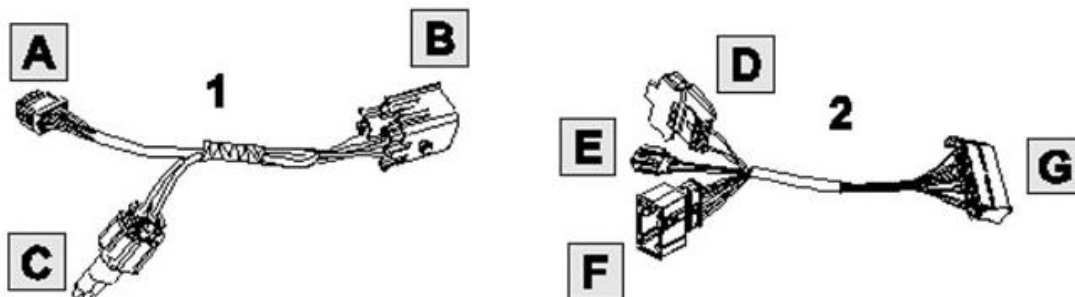




TOWBAR INSTALLATION INSTRUCTIONS

PART NUMBER 03273RW

HOLDEN TRAILBLAZER RG CL4 CN



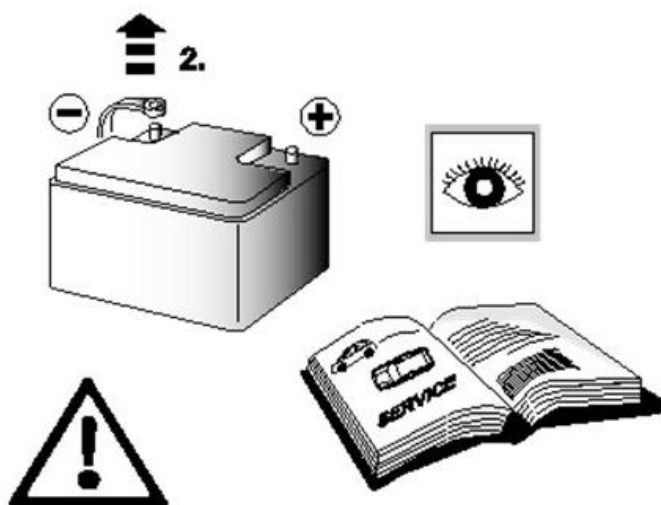
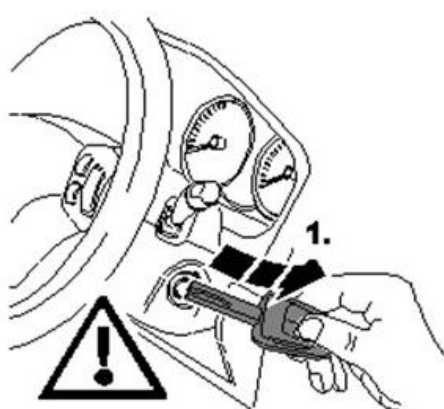
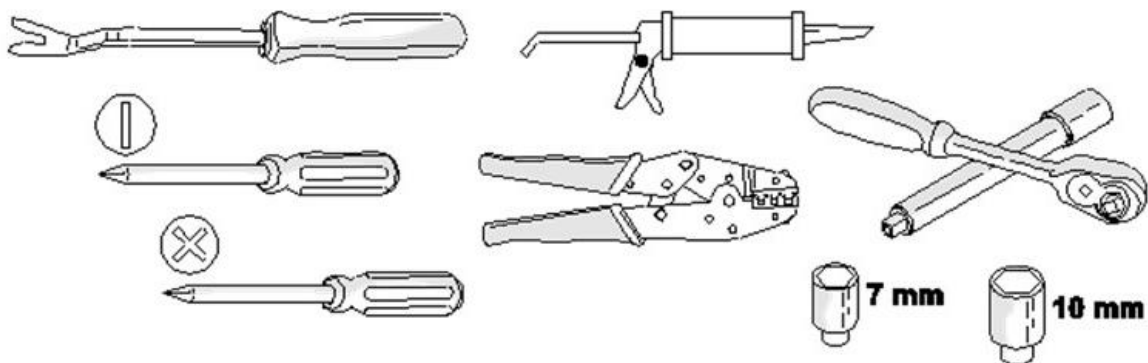
ITEM	DESCRIPTION	QTY
1	Rear outside harness	1
2	Front inside harness	1
3	Trailer module -> WLE70001	1
4	Tie Straps	4
5	Brake controller plug pin - small	1
6	Brake controller plug pin - large	1
7	Weather Seal brake controller plug - small	1
8	Weather Seal brake controller plug - large	1
9	Secondary lock brake controller plug	1



TOWBAR INSTALLATION INSTRUCTIONS

PART NUMBER 03273RW
HOLDEN TRAILBLAZER RG CL4 CN

TOOLS



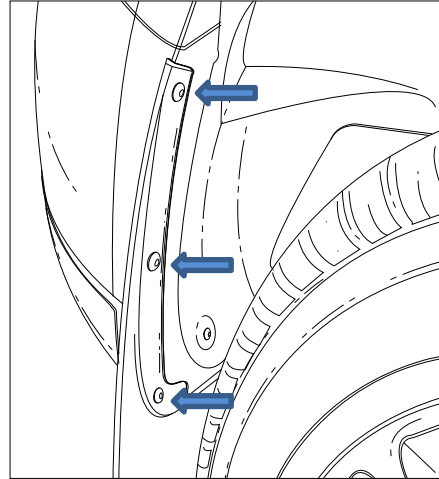


TOWBAR INSTALLATION INSTRUCTIONS

PART NUMBER 03273RW

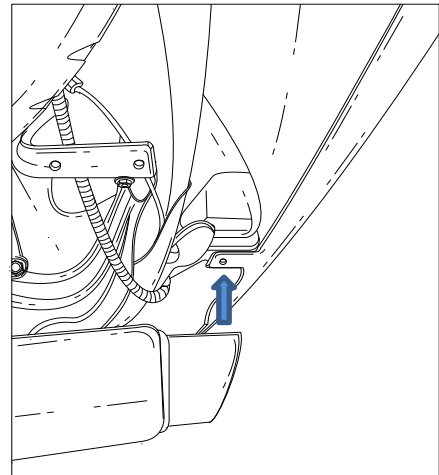
HOLDEN TRAILBLAZER RG CL4 CN

1. Remove 3x Screws from inside Rear Wheel well, repeat for opposite side of vehicle.



2. At bottom of Bumper, remove 3x Scrivets. One each from Driver side, Passenger side and centre of Bumper.

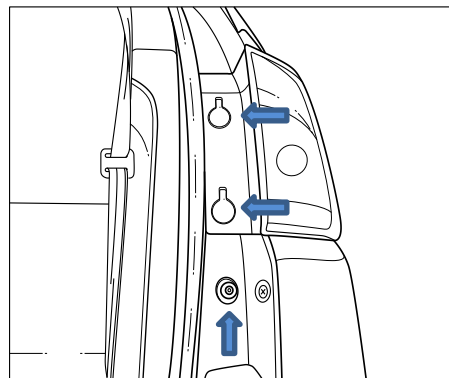
Driver side seen in image.



3. Carefully raise the 2x Screw Covers on Rear Tail Light. Unscrew the 2x Screws revealed underneath then remove the Tail Light, disconnecting the cable. Store Tail Light in safe place.

Remove the Screw connecting the Bumper to the vehicle. Located below the Tail Light.

Repeat for opposite side of vehicle.





TOWBAR INSTALLATION INSTRUCTIONS

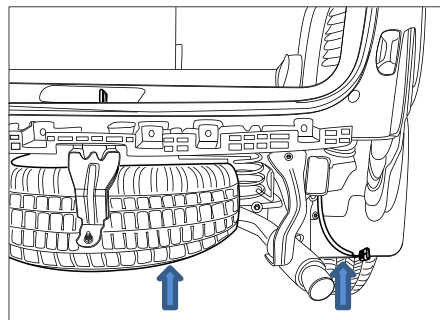
PART NUMBER 03273RW

HOLDEN TRAILBLAZER RG CL4 CN

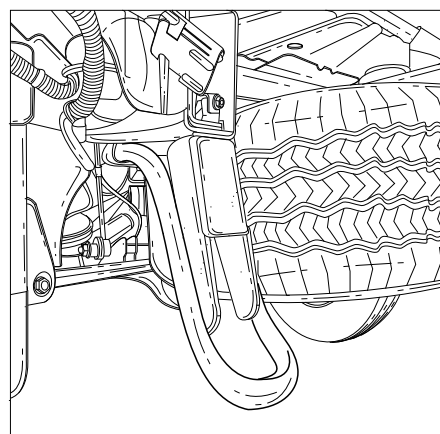
- Carefully remove Bumper from vehicle and store in safe place. Ensure Rear Parking Sensor Cables and Rear Right Cables are disconnected.

Disconnect the 3x Bumper Tabs from vehicle and discard. (Centre and drivers side shown)

Lower the tyre, if access to centre Bumper tab is obstructed by Spare Tyre.



- Disconnect the Shipping Hook from the vehicle and discard.



- Offer Towbar to vehicle, using Shim Plates (Item 3) supplied to ensure a snug fit between the Side Plates and Chassis Rail.

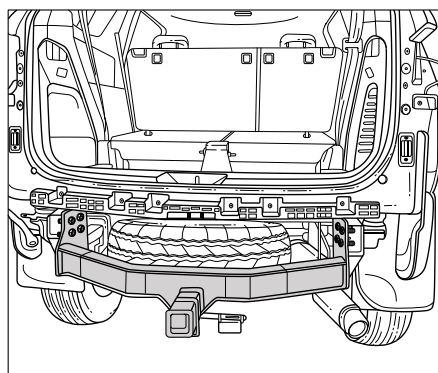
Use Horizontal Bolts first to help position the Towbar.

Tighten the Bolts to the torque specifications. Ensure that the vertical Bolts are tightened first, then Horizontal Bolts.

Torque specification:

M12 Gr10.9 : 125Nm

M10 Gr 8.8 : 48Nm





TOWBAR INSTALLATION INSTRUCTIONS

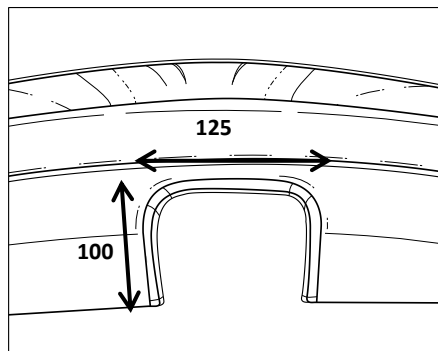
PART NUMBER 03273RW

HOLDEN TRAILBLAZER RG CL4 CN

7. From the centre of the Bumper, use appropriate tools to create a Bumper Cut.

Make a cut 125mm wide, and a length of 100mm following the surface, starting from the bottom edge of the Bumper.

Use the pinch weld supplied to cover over the cut.



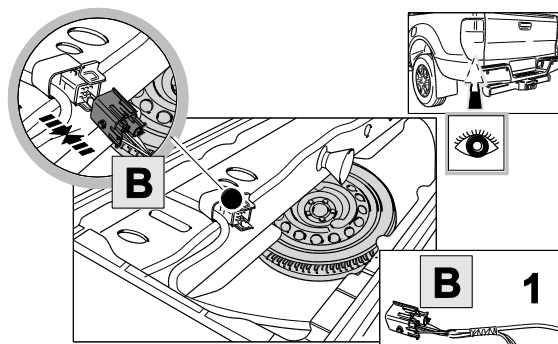
IMPORTANT

Due to possible vehicle variations, always confirm any noted vehicle colour wires with a multi-meter to ensure the correct function is identified before soldering or scotch locking. For vehicle wires denoted with two colours (example; RED/GREEN) the first colour will always be the main wire colour while the second colour is the thinner trace colour on the wire.

8. Find the prepared trailer plug located on top of the spare wheel.

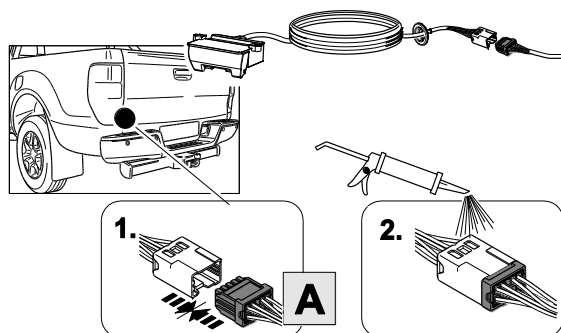
Remove and discard blanking plug.

Connect the rear outside harness (1) using connector (B).



9. Connect tail harness with 8-way connector to outside trailer harness connector (A).

Waterproof the trailer harness 8-way connector (A) and the tail harness 8-way male connector, using silicone or grease.





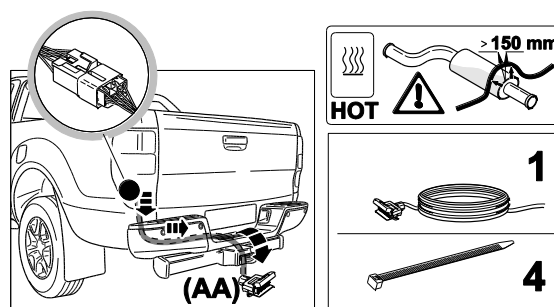
TOWBAR INSTALLATION INSTRUCTIONS

PART NUMBER 03273RW

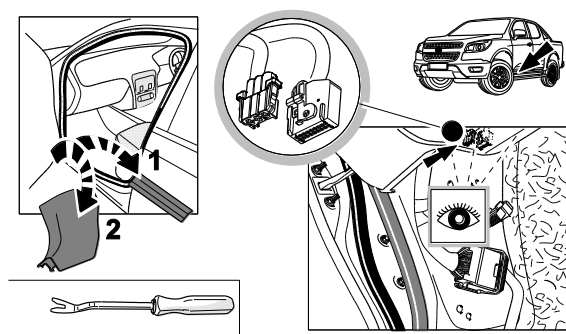
HOLDEN TRAILBLAZER RG CL4 CN

10. Route the tail harness to the socket plate and fix the tail harness with enclosed tie straps.

Mount the trailer socket. (AA)

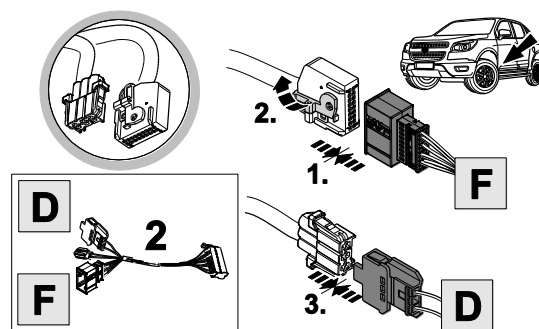


11. Remove the left front sill trim (1) and kick trim (2), locate the 2 prepared connectors.



12. Connect internal harness (2) as shown.

Make sure connector (F) is fully home before closing the cam lock.



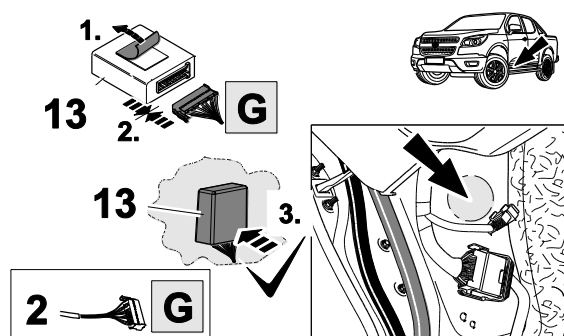


TOWBAR INSTALLATION INSTRUCTIONS

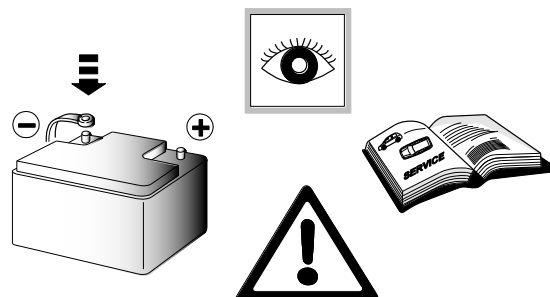
PART NUMBER 03273RW

HOLDEN TRAILBLAZER RG CL4 CN

13. Connect the trailer ECU (3) using connector (G). Find a good flat clean surface, remove the backing tape from the adhesive pad and press the module against this surface. Apply pressure for 60 seconds to ensure good adhesion.



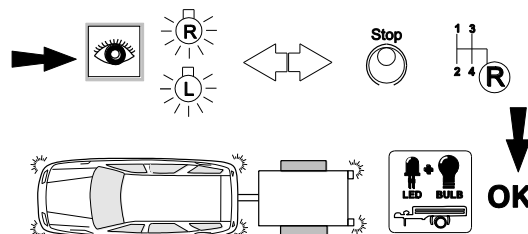
14. Re-connect the battery.



15. Check all light functions.

Before testing the lights and automatic parking sensor deactivation with a tester or trailer connected, the trailer module must be activated by putting your foot on the brake.

This allows the module to detect if a trailer is connected. Once a trailer is disconnected, another press on the brake will enable the module to detect no trailer is connected.



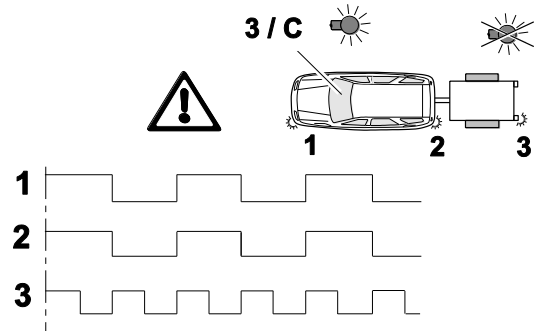


TOWBAR INSTALLATION INSTRUCTIONS

PART NUMBER 03273RW

HOLDEN TRAILBLAZER RG CL4 CN

16. A trailer bulb out condition is indicated with an increased indicator frequency as well as a display on the dash.



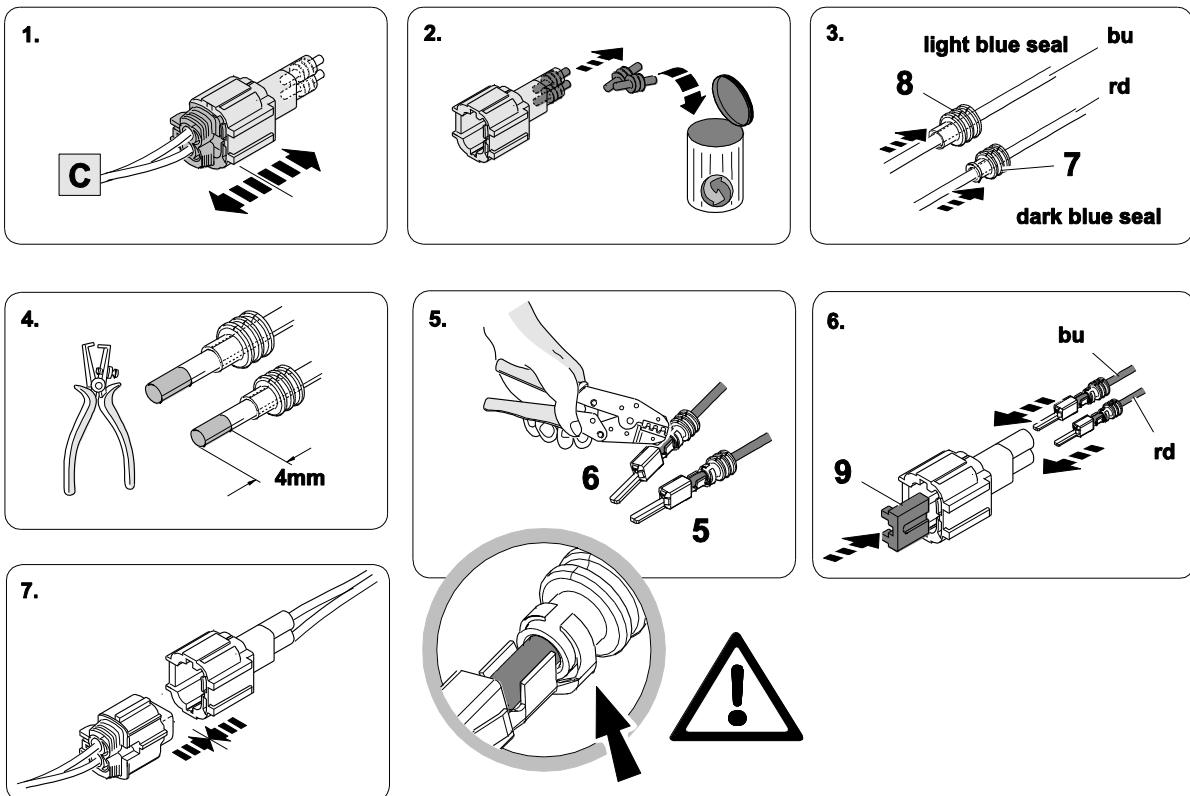
17. Install brake controller plug.



OPTIONAL



Trailer Brake Preparation





CUSTOMER INFORMATION

PLACE THESE INSTRUCTIONS IN THE VEHICLE'S GLOVEBOX AFTER INSTALLATION

**THANK YOU FOR PURCHASING HAYMAN REESE.
WITH CORRECT MAINTENANCE AND CARE THIS PRODUCT WILL PROVIDE A
LIFETIME OF TROUBLE-FREE OPERATION.**

TOWBAR MAINTENANCE AND CARE:

1. Hayman Reese recommend that the towbar LUG or TBM (tow ball Mount) Pull Pin and R-clip are removed and stored when not in use. Removal of LUG or TBM (tow ball mount) is advisable when not in use to assist with any of the following.
 - Ensure rear number plate is not obscured.
 - Allow maximum available departure angle and prevent any potential interference.
 - Prevent possible interference with vehicles reverse sensors or camera detecting a tow ball mount as an obstruction during reversing.
 - Removes towball mount as an obstruction for when moving around the rear of the vehicle.
2. Hayman Reese recommends routine inspection of your towbar to ensure trouble free towing.
 - Bolt security and tension should be regularly inspected and checked for correct tension. Replace any worn or defective parts with suitable grade & class fasteners. Inspection should be requested to coincide with vehicle major services.
3. It is the owner's responsibility to ensure towing and down ball weight capacities of the towing vehicle are not exceeded.
 - Towing and down ball weights allowable may differ according to model variations. Please refer to owner's manual or vehicle dealer to confirm exact rating for your vehicle model variant.
 - It is not uncommon for the vehicle tow rating to differ from the towbar rating. When this occurs, the lesser rating must be adhered to.
 - For vehicles fitted with enhanced vehicle functions that may be altered/changed when towing i.e Trailer sway mitigation, blind spot detection, adaptive cruise control etc. Please consult owner's manual to understand changes enabled when towing and after towing.



WARRANTY INFORMATION:

Hayman Reese Towbars are covered by a Lifetime Warranty.

Our goods come with guarantees that cannot be excluded under the Australian Consumer Law. You are entitled to a replacement or refund for a major failure and for compensation for any other reasonably foreseeable loss or damage. You are also entitled to have the goods repaired or replaced if the goods fail to be of acceptable quality and the failure does not amount to a major failure.

For further details please visit www.haymanreese.com.au/warranty or contact customer service on 1800 812 017 or info@haymanreese.com.au.



CUSTOMER INFORMATION

PLACE THESE INSTRUCTIONS IN THE VEHICLE'S GLOVEBOX AFTER INSTALLATION

HAYMAN REESE SMART PIN

Your Hayman Reese towbar is equipped with Smart Pin technology to help reduce towbar tongue rattle in most driving conditions. Please ensure below instructions are understood and routine maintenance is carried out to ensure best towing experience.

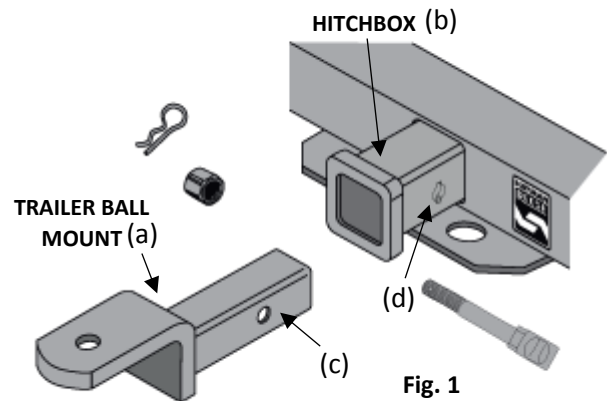
i Regularly inspect for wear and check the tightness of the Smart Pin Nut. Follow instructions below to re-tighten the nut as necessary when movement and noise in the tow ball mount is noted.

- Before towing, ensure R-Clip is properly installed and Smart pin nut is installed and tensioned. Replacement parts are available from your Hayman Reese Distributor.

TOWBALL MOUNT REMOVAL/INSTALLATION

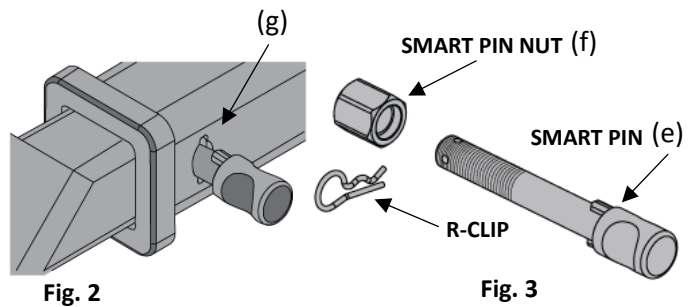
STEP 1

Insert Trailer Ball Mount (TBM) (a) into towbar hitchbox (b), aligning hole in TBM shank (c) with hole in hitchbox (d) (Fig. 1)



STEP 2

Insert Smart Pin (e) through hole in hitchbox and hole in TBM shank (g); ensure the locators are inserted into the notches in the hitchbox (Fig. 2)

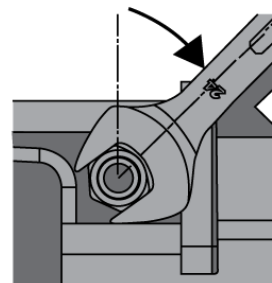


STEP 3

Screw Smart Pin Nut (f) onto Smart Pin (g); tighten Smart Pin Nut until finger tight, ensuring TBM is restrained from up and down movement.

STEP 4

Tighten Smart Pin Nut by turning nut a further 1/8th of a turn in the clockwise direction using a 24mm spanner (Fig. 4).



STEP 5

Install Smart Pin R-Clip through the hole that provides best clearance or easiest access. (Fig. 5)

