

Fitting Instructions

Part Number: 113214 BMW IX



For Trailer Towing Only

Approximate Installation Time: 1.5 Hrs

Maximum Towing Capacity Braked: 2500kg

Maximum Towing Unbraked: 750kg

Maximum Down Ball Weight: 250kg

Vehicles towing capacity may vary refer to owner's handbook.

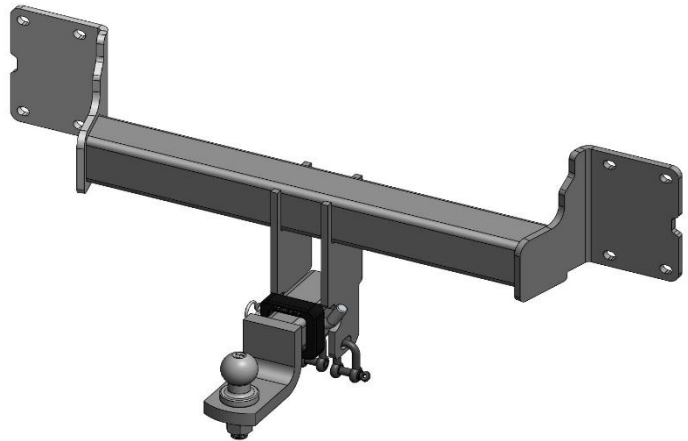
ENSURE THAT INSTRUCTIONS ARE UNDERSTOOD PRIOR TO FITMENT

- Ensure all hardware has been included.
- Do not Cut, Drill, Weld or otherwise modify Towbar.
- Make sure Instructions are read and understood prior to beginning fitment.
- Be Aware of changes in vehicle shape and bumper designs as well as any accessories that may alter the installation of this product.
- Bumper cut instructions are a guide only, ensure correct area is marked out prior to cutting.
- Use supplied Fasteners for installation. If replacement is needed ensure to use fasteners of the same quality and rating.
- Ensure that all fasteners are tightened to recommended torque settings.
- Towrite advises the removal of the Ball mount when not in use as to produce a clear view of the vehicle's registration plate if obscured.
- Check all Fasteners routinely and regularly.
- Check Towball is Tight before Towing.
- Instructions are a Guideline Only, Towrite accepts no responsibility for Changes in vehicle or fitment If not properly understood. It is recommended that installation is carried out by a trained Professional.
- Fitting in an EV electric car or HV hybrid vehicle must only be done by qualified personnel.
- The required qualifications may vary depending on the region. Please observe the local legislation and legal directives relating to service to electric vehicles.
- Disregarding these instructions may lead to serious injuries or death.

Fitting Instructions

Fitting Kit

Part	QTY
133214 Mainframe	1
D Shackle	2
Anti Rattle Bolt	1
TB01 Ball mount	1
TB3562C 50mm Towball	1



Torque Settings 8.8 Grade High Tensile Bolts

M8 = 26 Nm

M10 = 51 Nm

M12 = 89 Nm

M14 = 141 Nm

M16 = 215 Nm

Tow Ball = 350 Nm



Towbar comes with 2 x Compliance Stickers.
These are to be placed on the Towbar and
the Driver's side Door Well

Ensure Function of all Lights and systems are in working order as well as Visually inspect vehicle for damages before commencing work

Fitting Instructions

1. Undo 4 x Screws from wheel arch.
Repeat for other side.



2. Peel back felt and remove plastic clip.
Repeat for other side.

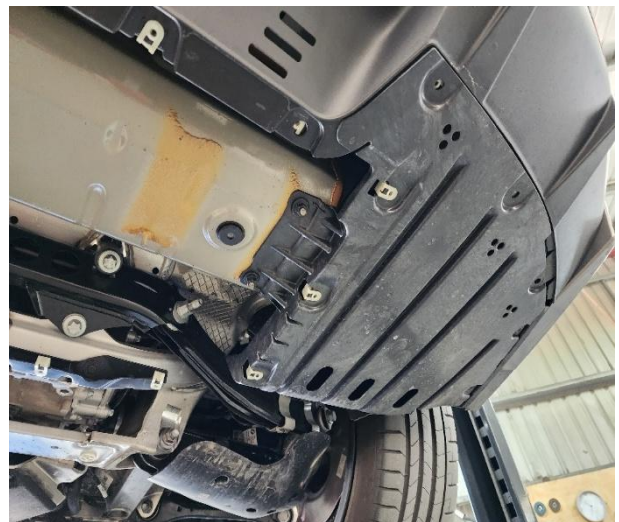


Fitting Instructions



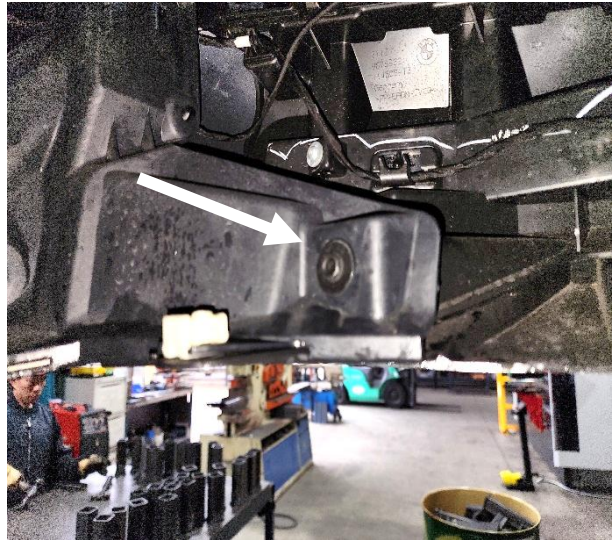
3. Remove all 10mm screws from underside of bumper and under body tray.

4. Remove 12mm Plastic nuts and allow under trims to hang for easier bumper removal and installation.



Fitting Instructions

5. Remove 10mm screw from inside bumper bar. Repeat for each side.



6. Remove bumper by peeling out from wheel arches and removing towards rear of vehicle.

Fitting Instructions

7. Remove bracket housing foot swipe sensor from impact beam. Disconnect key fob sensor

(retain bracket)



8. Remove impact beam via 4 nuts on each side.

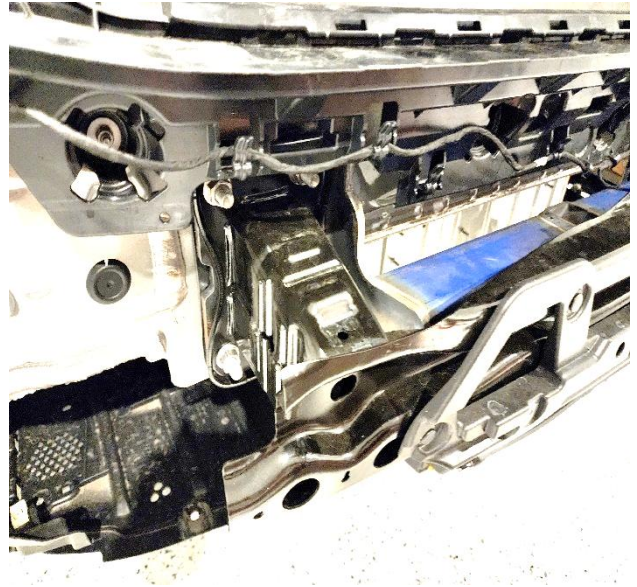
(Retain nuts and Impact beam)



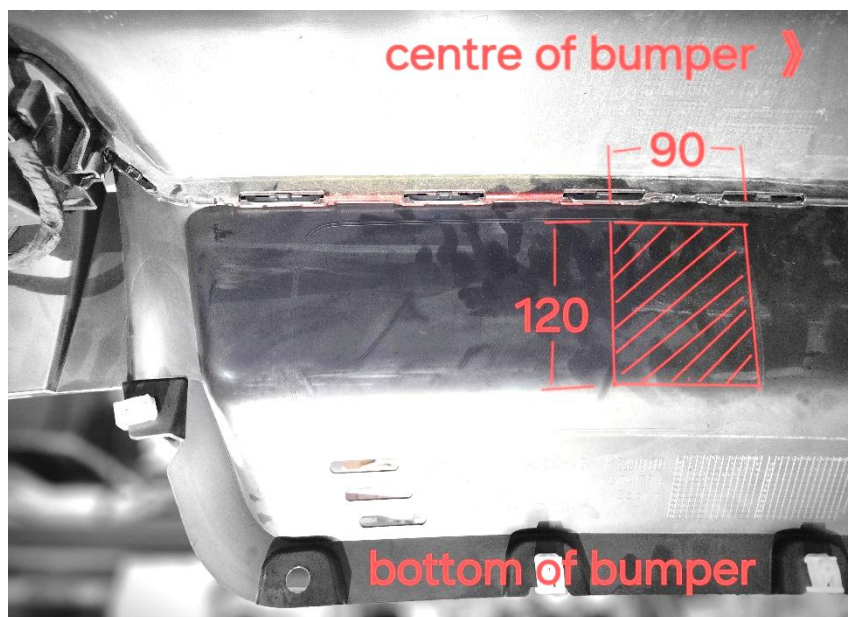
Fitting Instructions

9. Install towbar to exposed studs and refit impact beam over top.

(Tighten nuts to 89Nm)



10. Using factory bumper cut template as a guide, measure from the inside edge. Use top and bottom of template as your height and cut 90mm into template. See picture below.





Fitting Instructions

11. Reinstall bumper bar in reverse order. Keep in mind that the clip rail across the center of the boot must be in properly for tailgate to close.

If you find the plastic rail is sitting above the housings use a plastic clip tool and force it downwards.

Make sure reverse sensors and vehicle functions are operating upon completion.



Fitting Instructions

Please scan the QR code or click on the link below to view the Ballmount removal demonstration.

<https://youtu.be/LTcSNaCPu64>



Note: Anti rattle bolt is to be loose or removed whilst towing.



Fitting Instructions

Maintenance and Care

Here are some Maintenance and Care Tips to allow for trouble free operation of your Towbar for years to come.

- A) Towrite recommend removal of the Ball mount/ Tongue when not in use.
- B) Check all fasteners regularly and tighten if necessary. If any fasteners are worn or damaged use the same grade replacements.
- C) Ensure towing and down ball weights do not exceed manufacturers specifications (this may differ between vehicles – check owners handbook). This is the driver's responsibility.
- D) Use a Spray lubricant on contacts for wiring connections as well as removable and insertable parts regularly (i.e. Trailer plug and ball mount and pin and clip)
- E) Check Towball for wear and tear Regularly, ensure Towball is correctly tensioned before Towing.
- F) Towrite Recommends Replacement of your Towball every 12 months if towing regularly, we call this giving your Towball a "birthday".

Warranty Information

Your Towbar comes with a limited lifetime warranty covered nationwide. For warranty information please visit www.towritetowbars.com.au or call us on 1800 869 748