

**VEHICLE: Isuzu D-Max & Mazda BT-50**  
**PART NUMBER: 149134**

**TOWRITE**  
TOWBARS AUSTRALIA

## TOWBAR FITTING INSTRUCTIONS

# ISUZU



- ▶ **Isuzu D-Max** 07/2020 - On
- ▶ **Mazda BT-50** 07/2020 - On

### **For Trailer Towing Only**

Approximate Installation Time: 1 hr  
Maximum Towing Capacity Braked: 3500 kg  
Maximum Down Ball Weight: 350 kg

**Vehicles towing capacity may vary refer to owners handbook**

**TowRite Towbars Australia**  
**9 Deakin Street**  
**Brendale Qld 4500**  
**AUSTRALIA**  
**1800 869 748**

## WARNING

- This product is designed solely for towing and must be loaded exactly as outlined in your vehicle's Owner's Manual.
- If used with a bike carrier there is a 25% reduction in the towbar or vehicle ball weight capacity whichever is lowest.
- Do NOT drill, cut, weld, or modify this towbar under any circumstances.
- You might need to drill into the vehicle to install the parts. Before you drill, take a quick look behind the chassis rail and body panels to make sure nothing is in the way.
- The stated load ratings apply only where the trailer is equipped with an appropriately rated and functioning braking system.
- If installed in any position other than what is shown in these instructions, the towball mount may interfere with or obstruct certain vehicle features (such as tailgate operation or chassis clearance).

## GENERAL

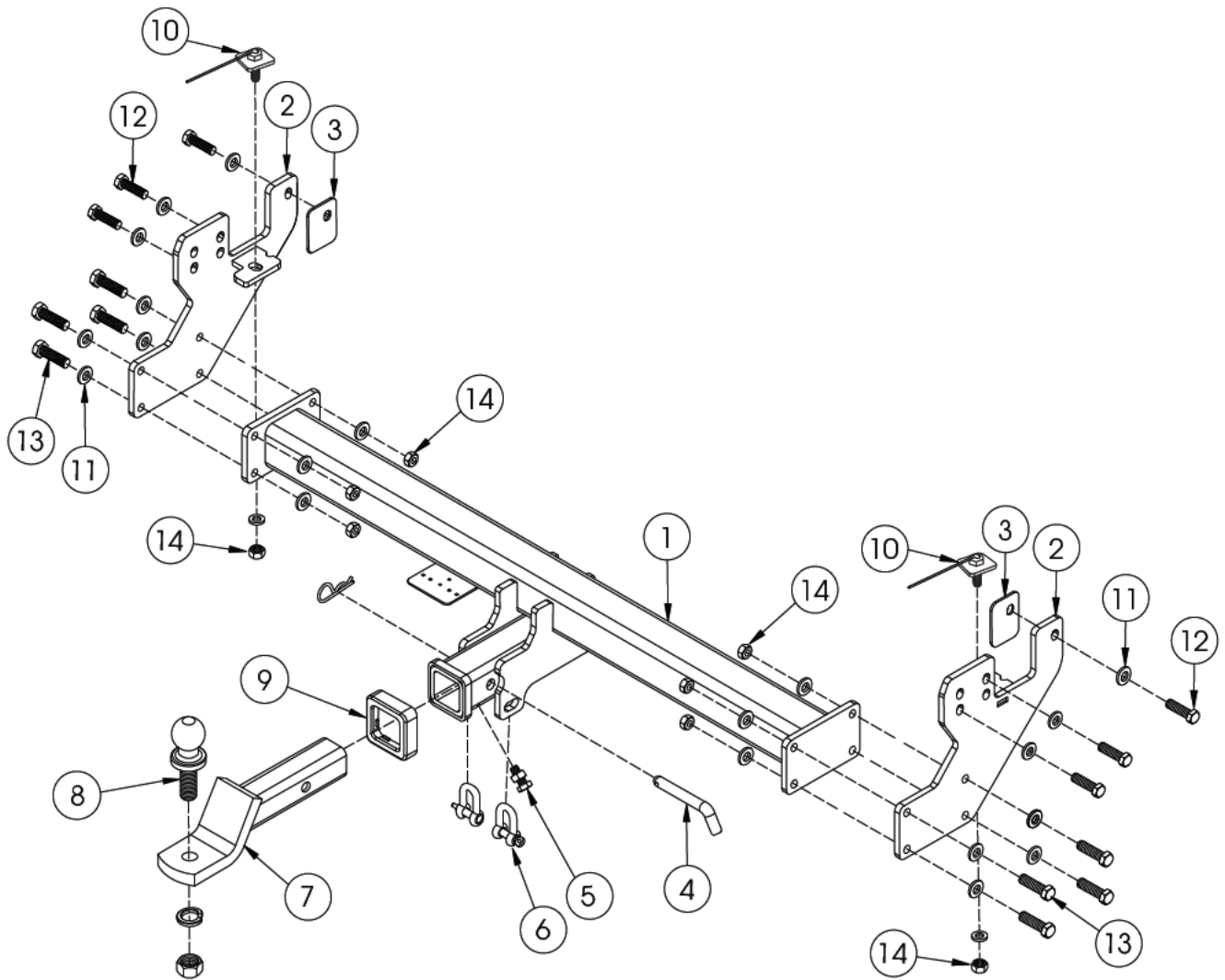
- Before installing this towbar, read the fitting instructions thoroughly and ensure all installation hardware is correct.
- Confirm the towbar is compatible with your vehicle, and consider any modifications or accessories (tray, canopy, suspension, etc.) that may affect installation.
- After drilling, clear away all metal filings, remove burrs, and apply a rust inhibitor to any exposed metal surfaces.
- The supplied high-tensile fasteners are essential to achieving the specified rating. If replacements are needed, ensure they are of the same grade (refer parts table on Page 3) and quality.
- Routinely check towball is tight before towing.
- Check all fasteners routinely and regularly.
- Be aware of changes in vehicle shape and bumper designs as well as any accessories that may alter the installation of this product.
- Bumper cut instructions are a guide only, ensure correct area is marked out prior to cutting.
- TowRite advises the removal of the ball mount when not in use to provide a clear view of the vehicle's registration plate if obscured.
- These instructions are provided as a guide only. TowRite accepts no responsibility for any changes to vehicle or fitment.
- Check the towball is securely tightened before towing.
- The towbar comes with 2 x compliance labels - one goes on the towbar and one in the driver's side door well.
- A two-person lift is recommended for installation.
- It is recommended that installation is carried out by a trained professional.

**\*Ensure that all lights and systems are functioning properly. Check the vehicle dash for any warning lights and visually inspect the vehicle for any damage before commencing work.\***

### Torque Settings 8.8 Grade High Tensile Bolts

Bolt Size	Torque
M8	22 Nm $\pm$ 10%
M10	46 Nm $\pm$ 10%
M12	77 Nm $\pm$ 10%
M14	146 Nm $\pm$ 10%
M16	190 Nm $\pm$ 10%
Tow Ball	350 Nm $\pm$ 10%

# CONTENTS



ITEM NO.	PART DESCRIPTION	QTY
1	TOWBAR ASSEMBLY	1
2	SIDE PLATE ASSEMBLY	2
3	SIDE PLATE SPACER	2
4	HITCH PIN & CLIP	1
5	ANTI RATTLE BOLT WITH LOCKING NUT	1
6	D SHACKLE	2
7	TB502 BALLMOUNT	1
8	50 mm TOWBALL	1
9	PLASTIC SHROUD	1
10	BOLT & PLATE ON WIRE	2
11	M12 WASHER	24
12	M12 X 1.25 X 35 mm BOLT	6
13	M12 X 1.75 X 45 mm BOLT	8
14	M12 X 1.75 NUT	10

# TOWBAR INSTALLATION

- 1** On the LHS.  
Remove 2 x step bolts from the rear step and discard.

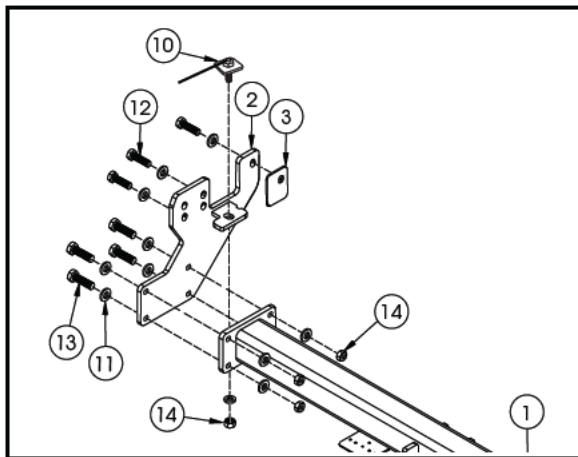
**NOTE:** The rear step does not get removed.

- 2** Fit 1 x side plate assembly **(2)** over step bracket.  
The front bolt **(12)** with M12 washer **(11)** must have the spacer **(3)** installed between the chassis and side plate **(2)**.

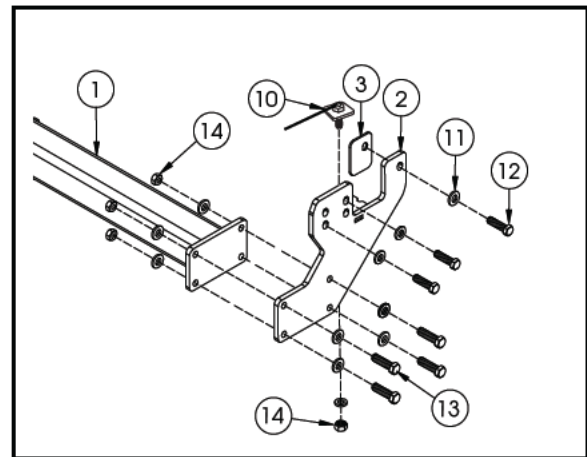
Loosely secure the side plate to the chassis with 2 x M12 x 1.25 x 35 mm bolts **(12)** and 2 x washers **(11)**.

Repeat for the RHS.

**LHS**



**RHS**



- 3** Insert the bolt and plate on wire **(10)** in the chassis.  
Loosely secure underneath with a M12 washer **(11)** and M12 nut **(14)**.  
Repeat for the other side.

- 4** Fit the towbar assembly **(1)** between the side plate assemblies **(2)** and loosely fit 4 x M12 x 1.75 x 45 mm bolts **(13)**, 8 x M12 washers **(11)** and 4 x M12 nuts **(14)** on each side arm.

Repeat for the other side.

- 5** Ensure all fasteners are tightened according to the torque settings on Page 2.

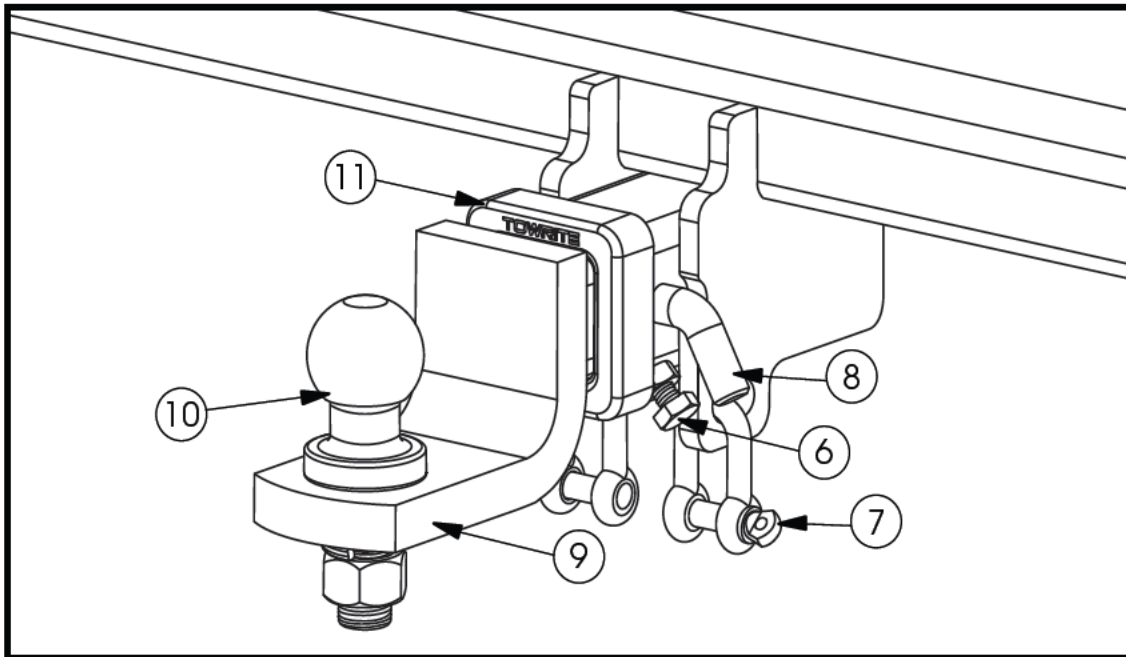
# BALLMOUNT INSTALLATION

**6** Fit the plastic shroud (11) and ballmount (9) into the receiver. Fasten with hitch pin & clip (8).

Attach the anti rattle bolt with locking nut (6) and D shackles (7).

**NOTE: This bolt is only to be tightened when not towing.**

Fit the towball (10) to the ballmount (9).



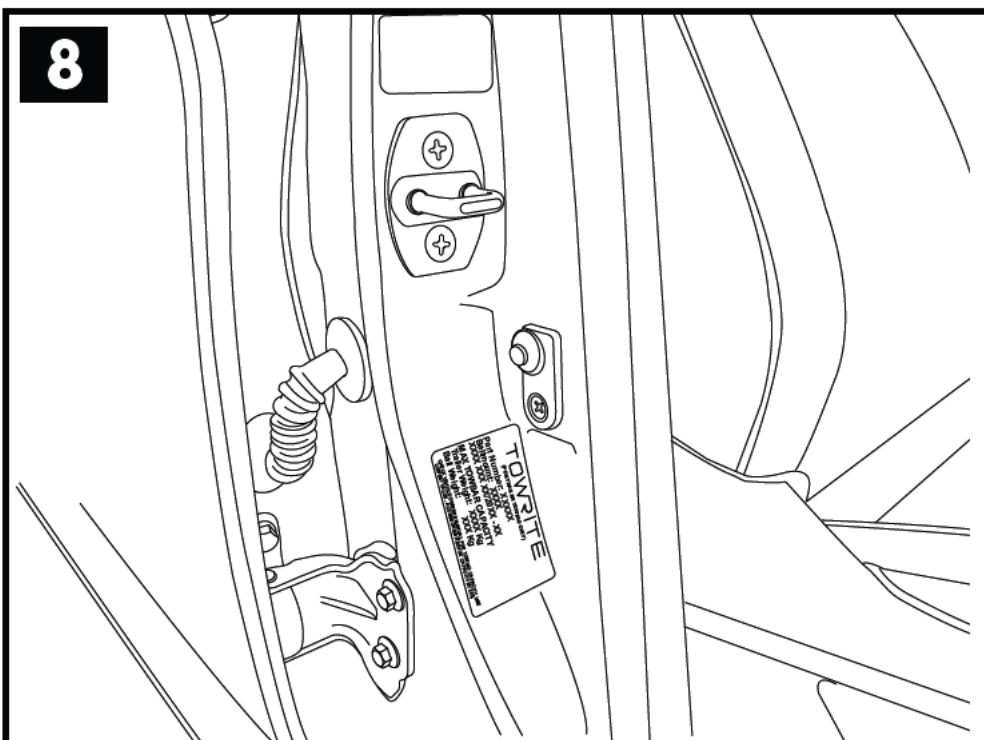
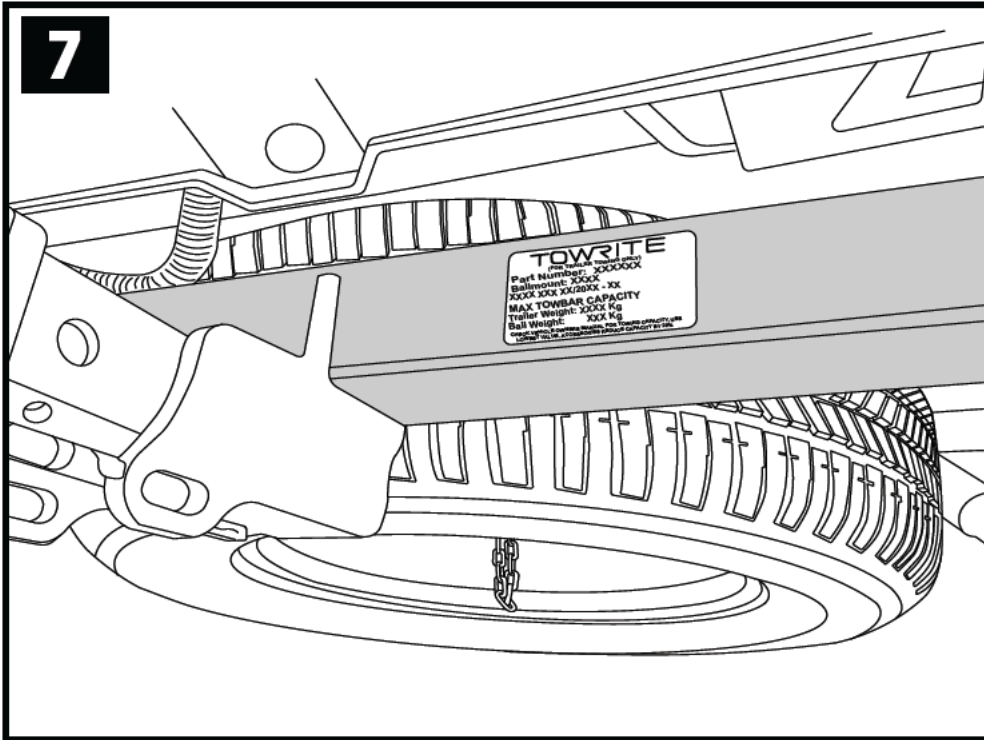
Please see below for Ballmount installation video.



# LABEL INSTALLATION

## CLEAN SURFACES

Attach 1 x compliance label on the towbar and the second on the drivers side door well.



## **Maintenance and Care**

Here are some maintenance and care tips to allow for trouble free operation of your towbar for years to come.

- A) TowRite recommend removal of the ball mount/tongue when not in use.
- B) Check all fasteners regularly and tighten if necessary. If any fasteners are worn or damaged use the same grade replacements.
- C) Ensure towing and down ball weights do not exceed manufacturers specifications (this may differ between vehicles - check owners handbook). This is the driver's responsibility.
- D) Use a spray lubricant on contacts for wiring connections as well as removable and insert able parts regularly (ie. Trailer plug and ball mount and pin and clip).
- E) Check towball for wear and tear regularly, ensure towball is correctly fastened and torqued before towing.

## **WARRANTY INFORMATION**

Your towbar comes with a limited lifetime warranty covered nationwide.  
For warranty information please visit [www.towritetowbars.com.au](http://www.towritetowbars.com.au)

**Contact us at [warranty@towritetowbars.com.au](mailto:warranty@towritetowbars.com.au) or call us on 1800 869 748**

**TOWRITE**  
TOWBARS AUSTRALIA

**TowRite Towbars Australia  
9 Deakin Street  
Brendale Qld 4500  
AUSTRALIA  
1800 869 748**

***info@towritetowbars.com.au***  
***www.towritetowbars.com.au***