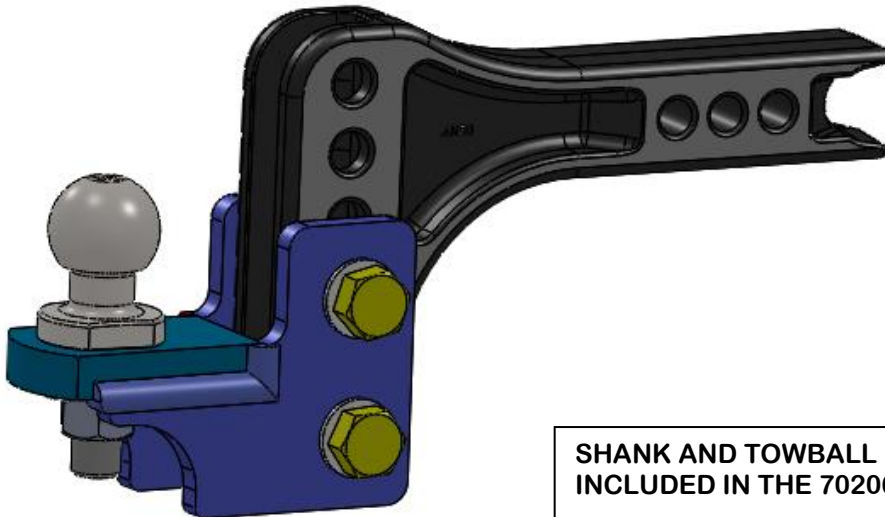


HAYMAN REESE
PART No: 70206 & 70207
ADJUSTABLE 3500kg TBM KIT

INSTALLATION INSTRUCTIONS

PLEASE ENSURE THAT INSTRUCTIONS ARE UNDERSTOOD PRIOR TO FITMENT



Installation Time: Approx 10 Mins

Towbar Installation Instructions

Towbar capacity

ADJUSTABLE 3500kg TBM KIT

Part Number **70206/70207**

Max Towing Braked : *3500kg

Max Towing Unbraked: *750kg

Max Static Ball Load: *350 kg

***NOTE: Towing capacity must not exceed the vehicle towbar rating.**

HAYMAN REESE
PART No: 70206 & 70207
ADJUSTABLE 3500kg TBM KIT
INSTALLATION INSTRUCTIONS

PLEASE ENSURE THAT INSTRUCTIONS ARE UNDERSTOOD PRIOR TO FITMENT

Warning:

1. Do not, drill, cut, weld or otherwise modify the Adjustable head assembly.

General:

1. Ensure all hardware items have been included refer to assembly diagram.
2. It is recommended that the instructions are read through and completely understood before making any attempt to fit this product.
3. Be wary of any changes to vehicle designs or other accessories that may conflict with the installation of this product.
4. The high tensile fasteners supplied with this product were used to achieve the specified rating. If replacement is required, ensure that fasteners of the same rating & quality are used. Contact an authorised **Hayman Reese** dealer if further information is required.
5. Ensure that all hardware is fastened to the correct torque and check fasteners on regular basis.
6. Hayman Reese recommends that you check your tow ball to ensure that it complies with the Australian standards **AS 4177.2**.
7. **PLEASE NOTE:** It is advised to remove your adjustable TBM assembly when not towing so as to produce a clear view of the vehicle's registration plate if obscured, and to also provide maximum available departure angle.

Tow bar Maintenance and Care.

Hayman Reese recommends that bolt torques are routinely and regularly inspected and checked for correct tension. Replace any worn or defective parts.

We recommended to remove Tow Ball Mounts (TBM's, tongues or lugs) when not being used for any considerable length of time. So as to avoid injury, when not towing it is suggested that the tongue, Pull Pin and R-clip are removed then stored in a safe, clean and dry place, away from excessive moisture.

Hitch Pull Pins and spring "R" clips are regularly checked for proper installation. Replace any worn or defective parts.

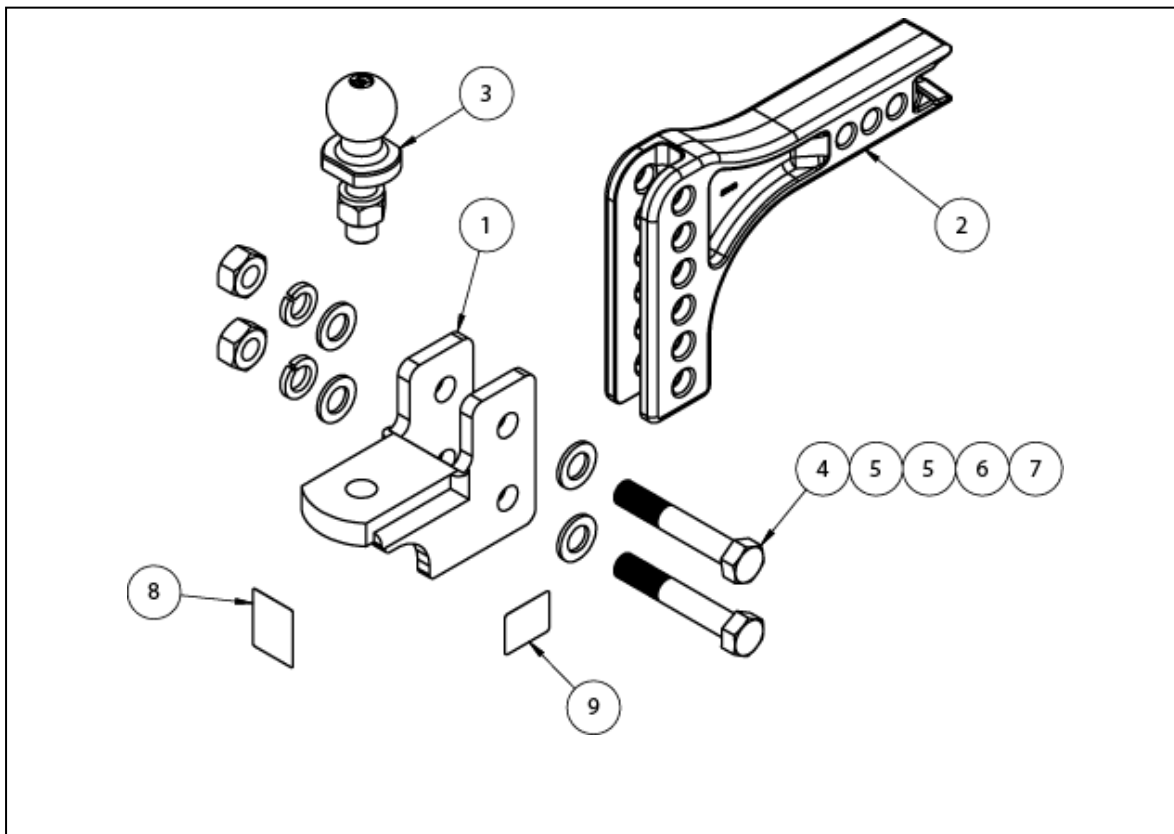
FOR TOWING PURPOSES ONLY
For towing capacity details please refer to vehicle
owner's manual or to the manufacturer. Overloading can
void your warranties.



HAYMAN REESE
PART No: 70206 & 70207
ADJUSTABLE 3500kg TBM KIT

INSTALLATION INSTRUCTIONS

PLEASE ENSURE THAT INSTRUCTIONS ARE UNDERSTOOD PRIOR TO FITMENT

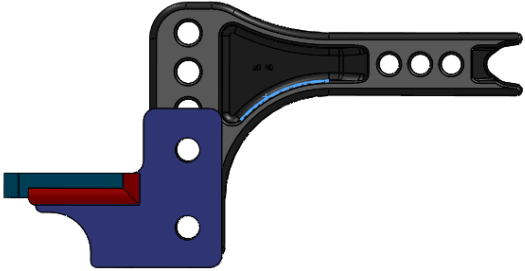
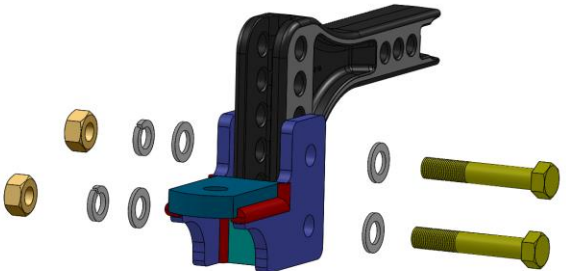


| ITEM NO. | DESCRIPTION | QTY. |
|----------|--------------------------|------|
| 1 | ADJUSTABLE HEAD 3500KG | 1 |
| 2 | CAST SHANK-STANDARD | 1 |
| 3 | HR TOWBALL | 1 |
| 4 | BOLT HXHD 3/4-10 x 4.5LG | 2 |
| 5 | WASHER FT 3/4 | 4 |
| 6 | SPRING WASHER 3/4" | 2 |
| 7 | 3-4" UNC NUT | 2 |
| 8 | H R STICKER | 1 |
| 9 | ACRYLIC CP LABEL | 1 |

HAYMAN REESE
PART No: 70206 & 70207
ADJUSTABLE 3500kg TBM KIT

INSTALLATION INSTRUCTIONS

PLEASE ENSURE THAT INSTRUCTIONS ARE UNDERSTOOD PRIOR TO FITMENT

| | |
|---|---|
| <p>1. Align the holes in the Cast Shank with the Adjustable Head (to the required height). Ensure that both holes are used.</p> |  |
| <p>2. Insert the 3/4" UNC Bolts through the Adjustable Head and the Cast Shank, complete with Washers and Nuts as depicted.</p> <p>3. Tighten all fasteners to a torque of 190 Nm.</p> |  |