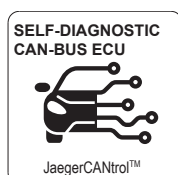
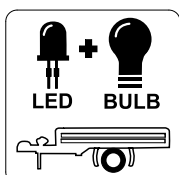


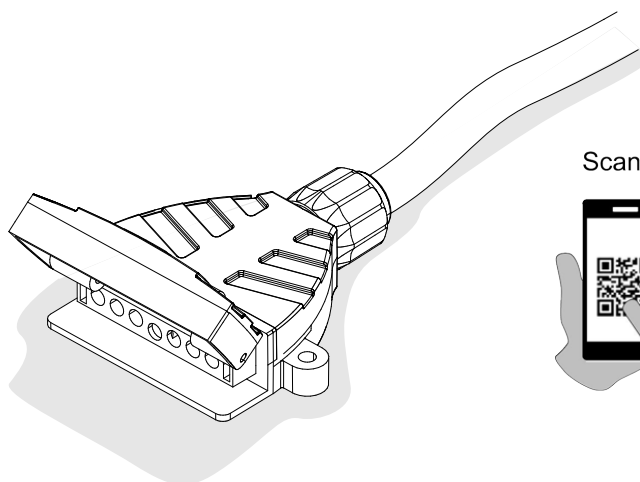
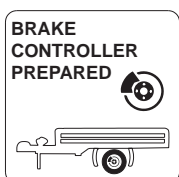
**BMW 7-Serie Limousine**

**F01 / F02**

**11/08 >> 02/14**



**750018**



Scan this for our full E-Kit catalogue



## Installation instructions

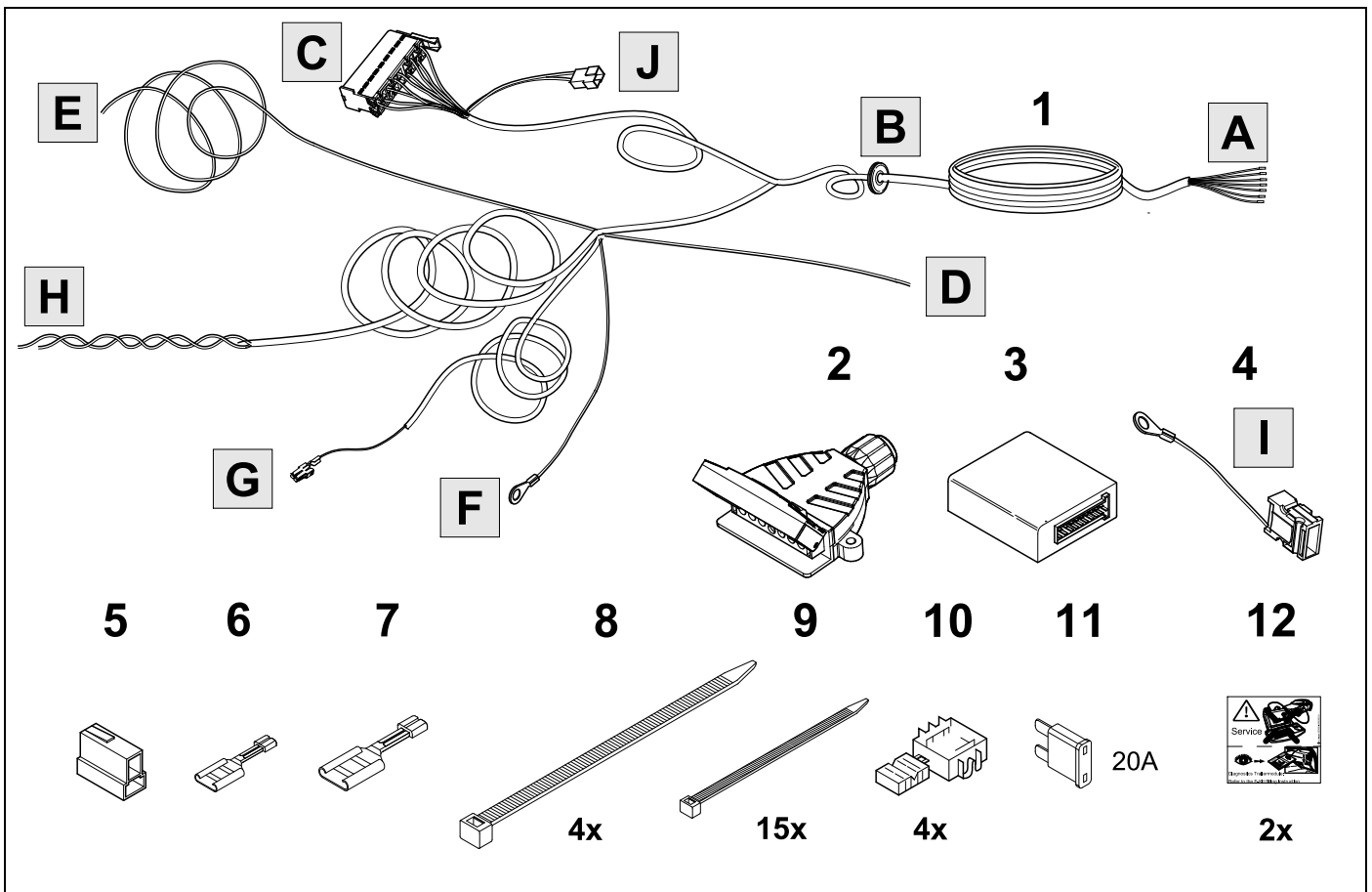
### Reference:

The following information must be reviewed before beginning the assembly:

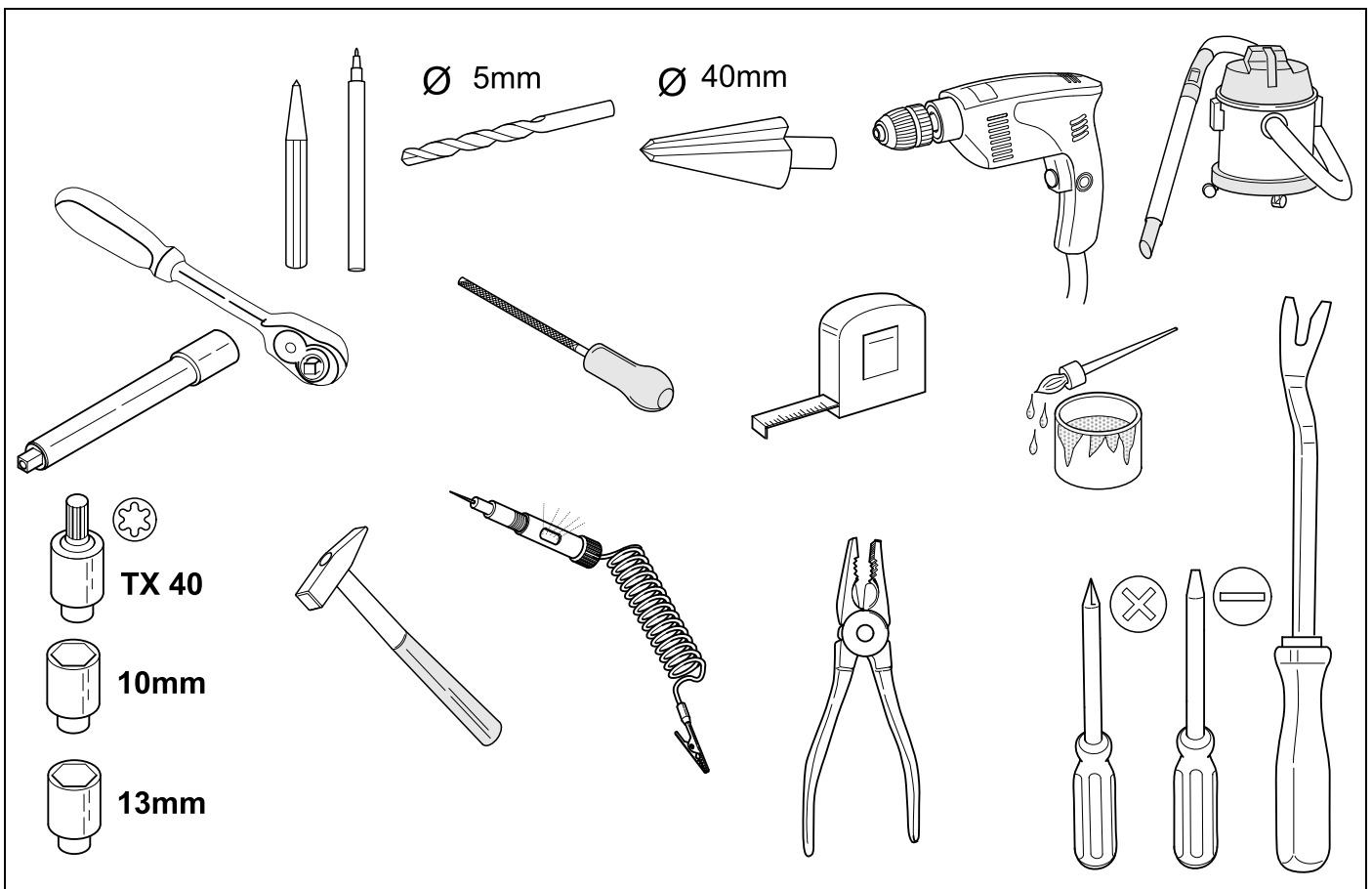


The installation instructions are to be thoroughly read.  
The installation should be carried out by qualified personnel with the relevant technical knowledge.  
The vehicle manufacturers' current technical notices and information on retrofitting must be followed.  
The removal and replacement instructions found in the current repair manuals must be followed.  
It must be ensured that the vehicle is technically suitable for the installation of a trailer hitch.

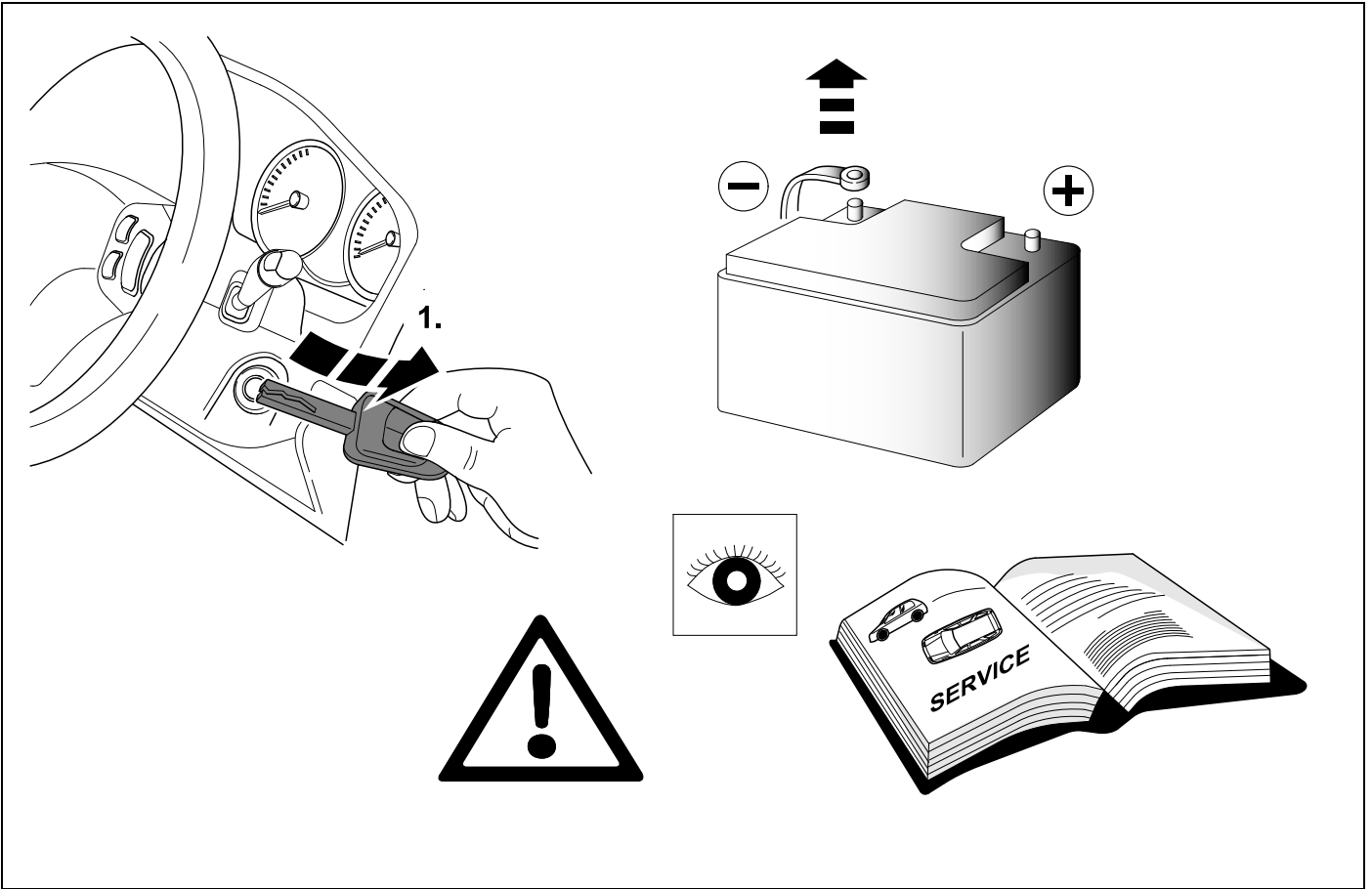
# KIT



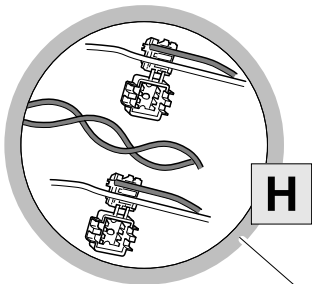
# TOOLS



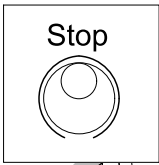
1



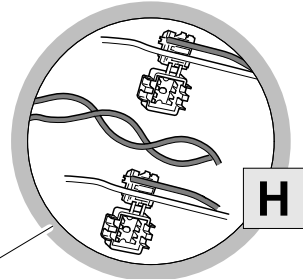
OPTION 2



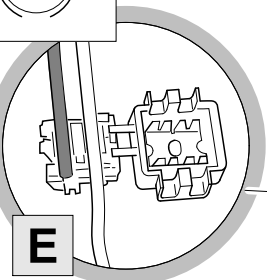
CAN-Wire



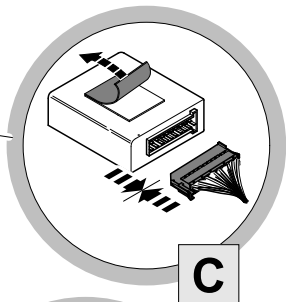
OPTION 1



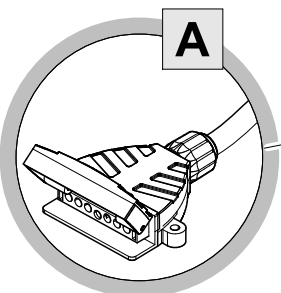
CAN-Wire



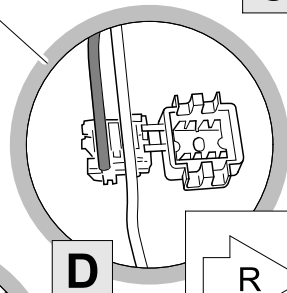
E



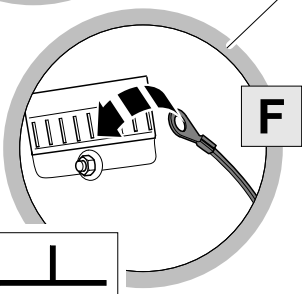
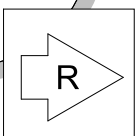
C



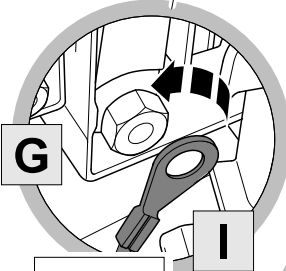
A



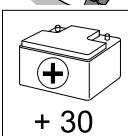
D



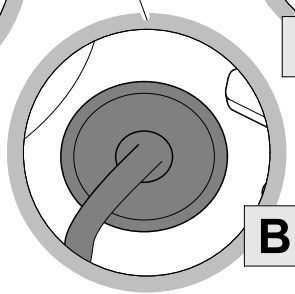
F



G

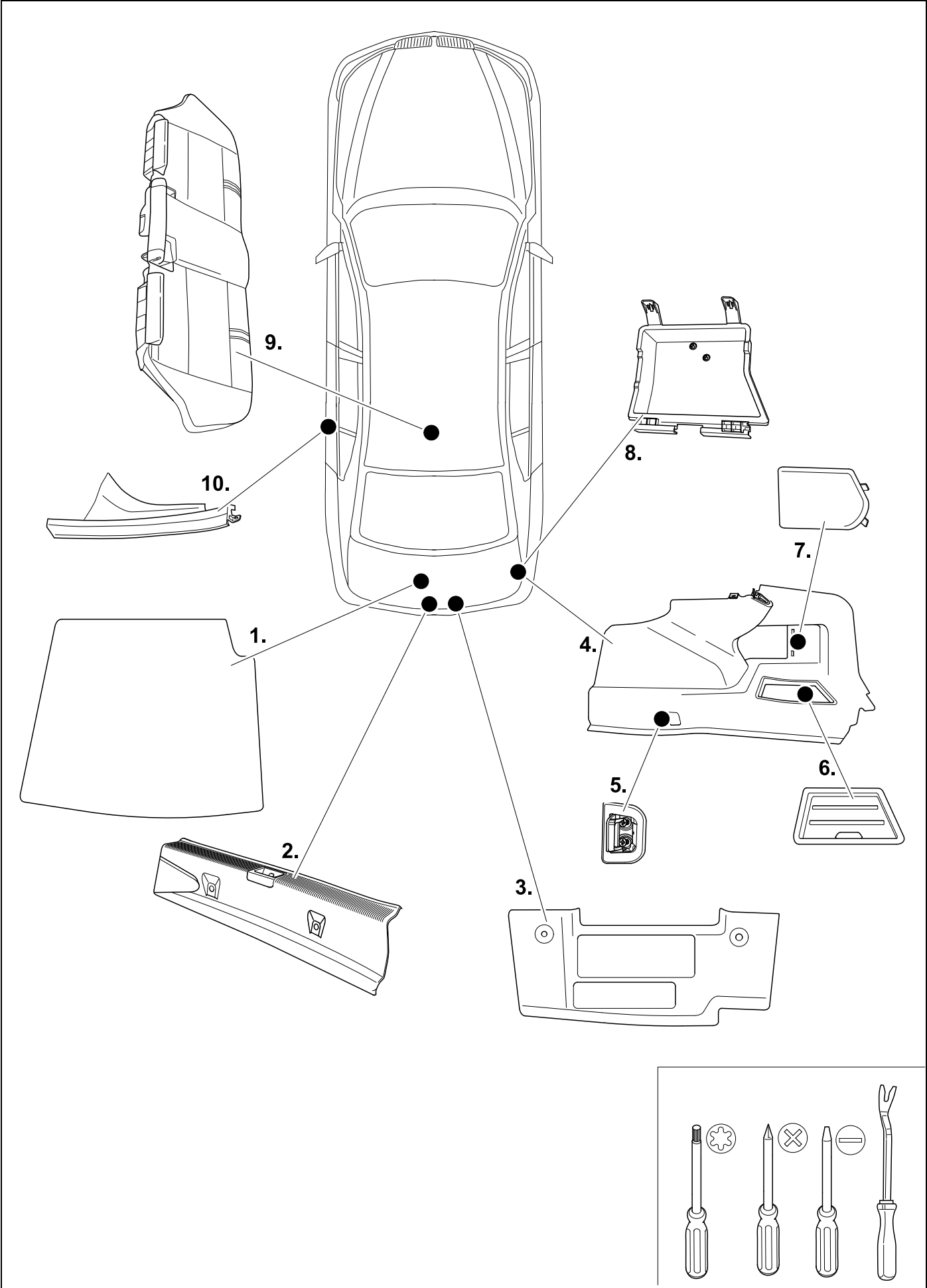


I

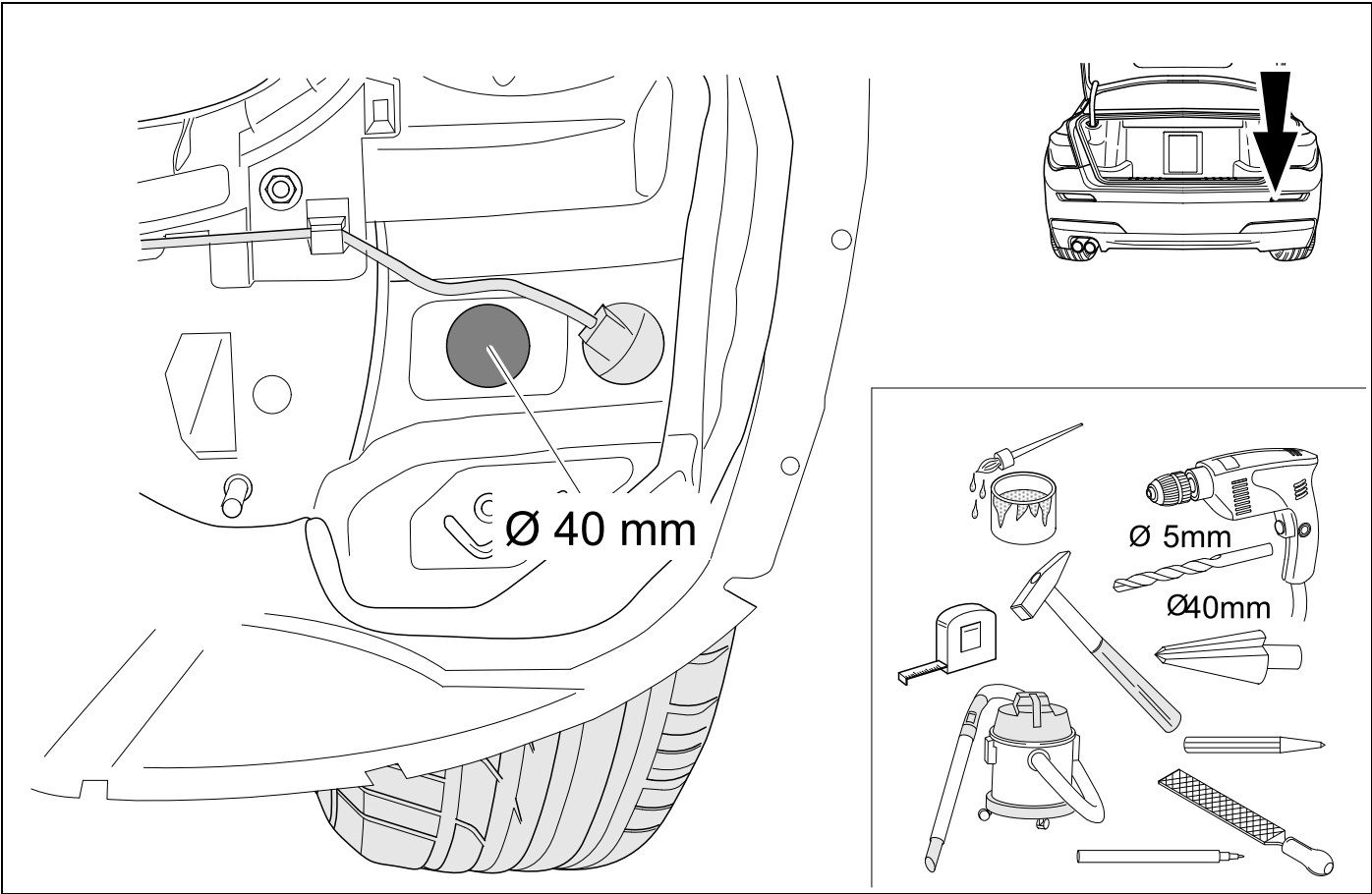


B

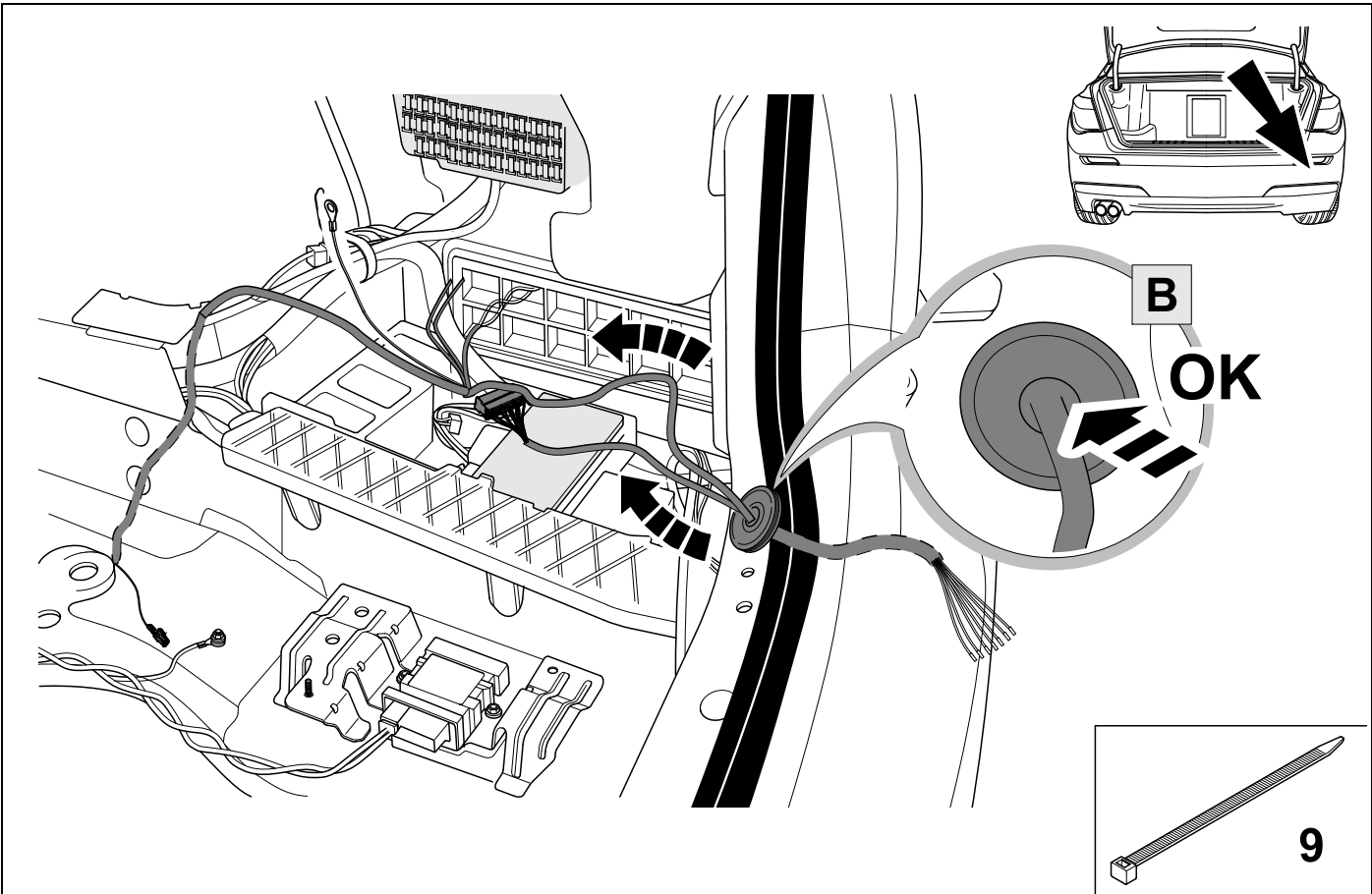
REMOVE



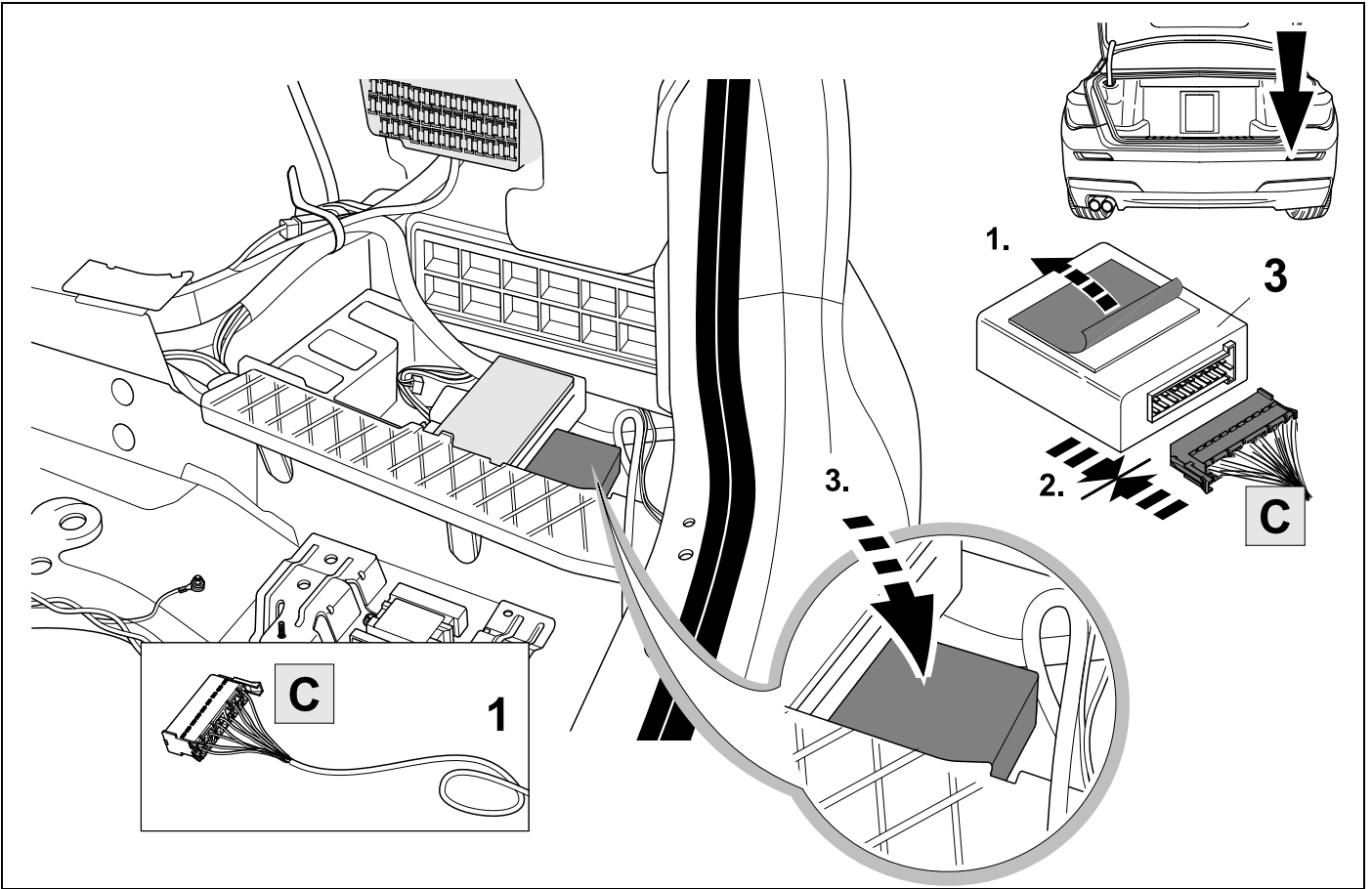
4



5



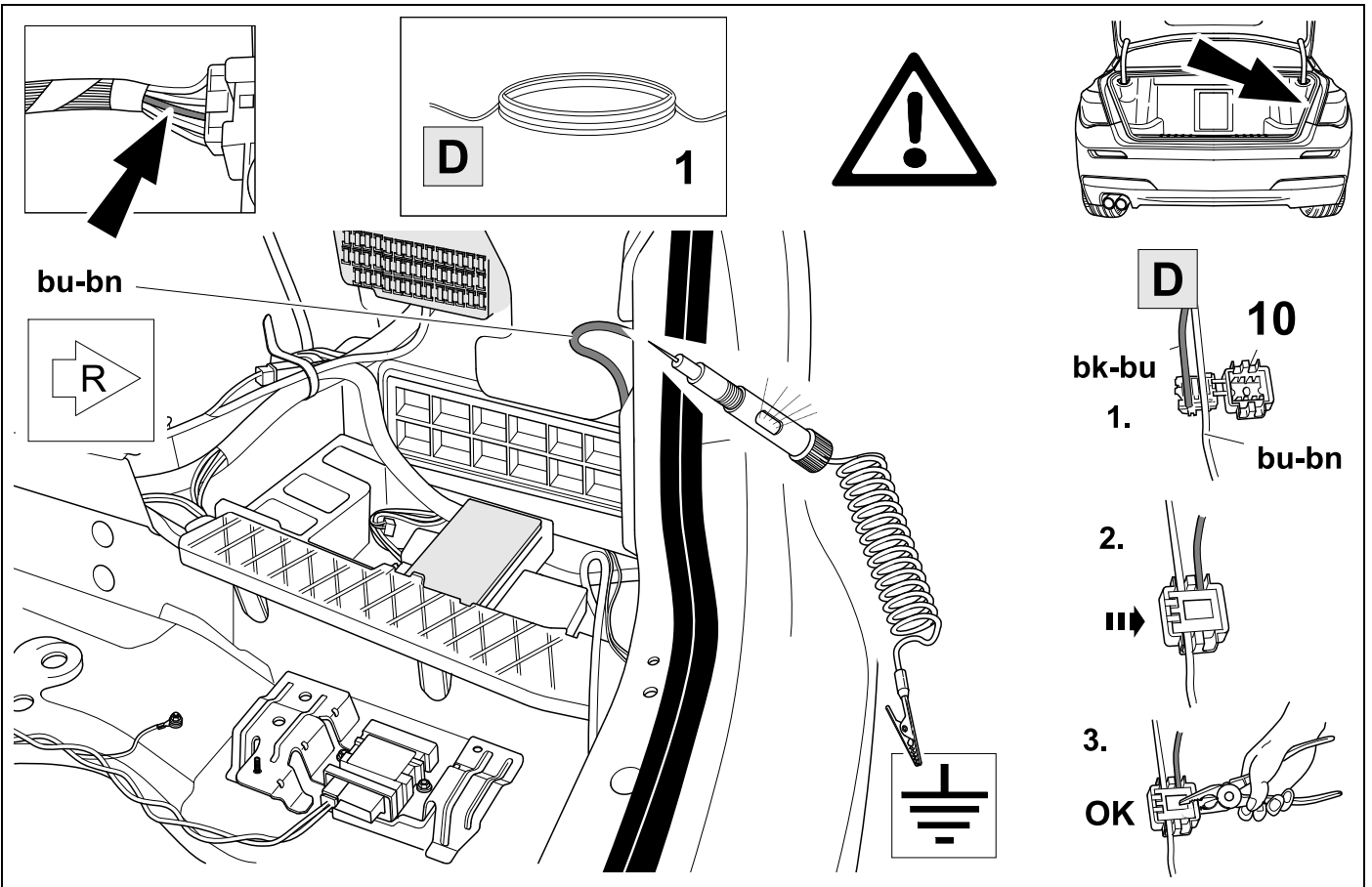
6



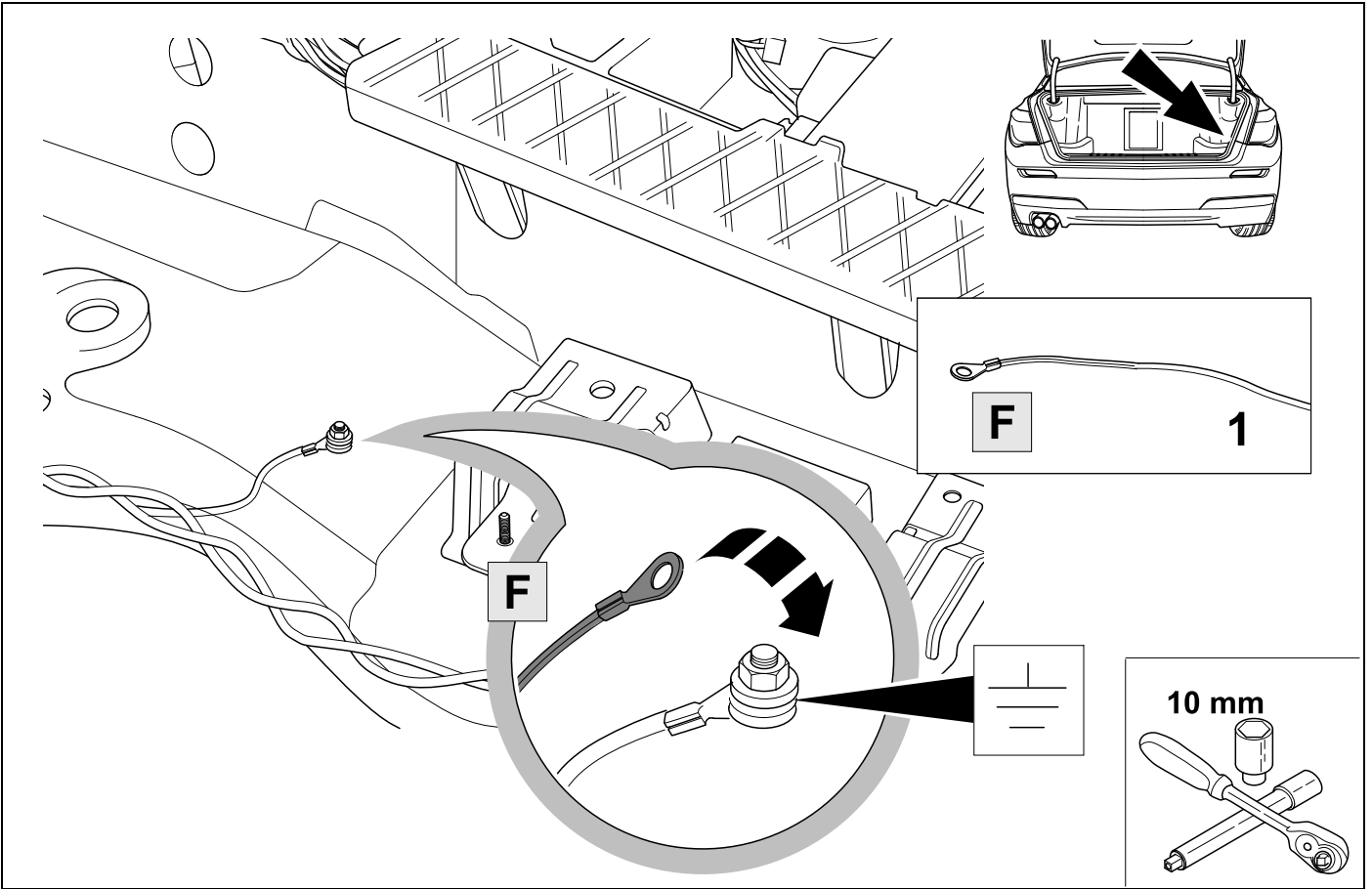
7



21



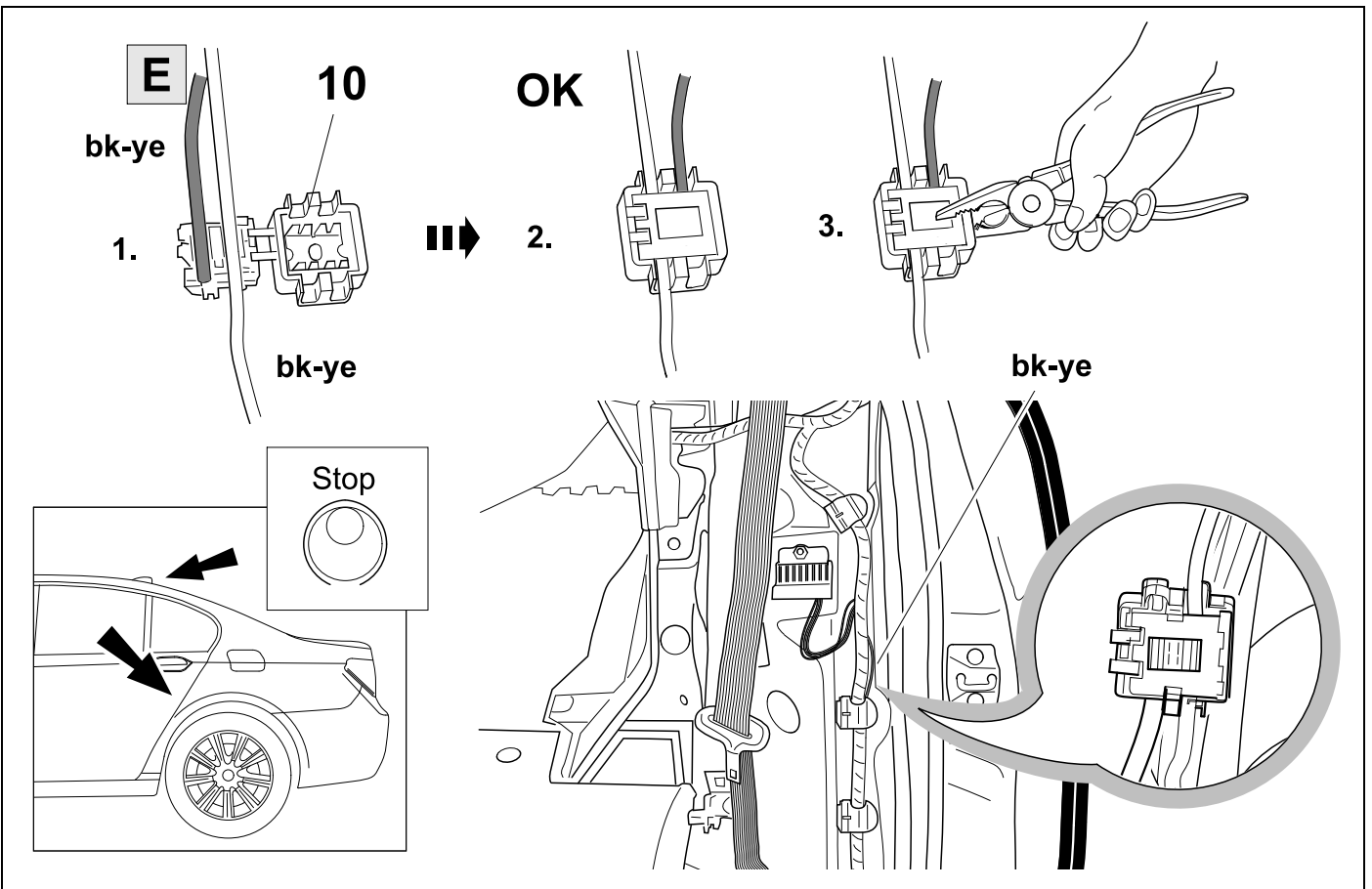
8



9



21

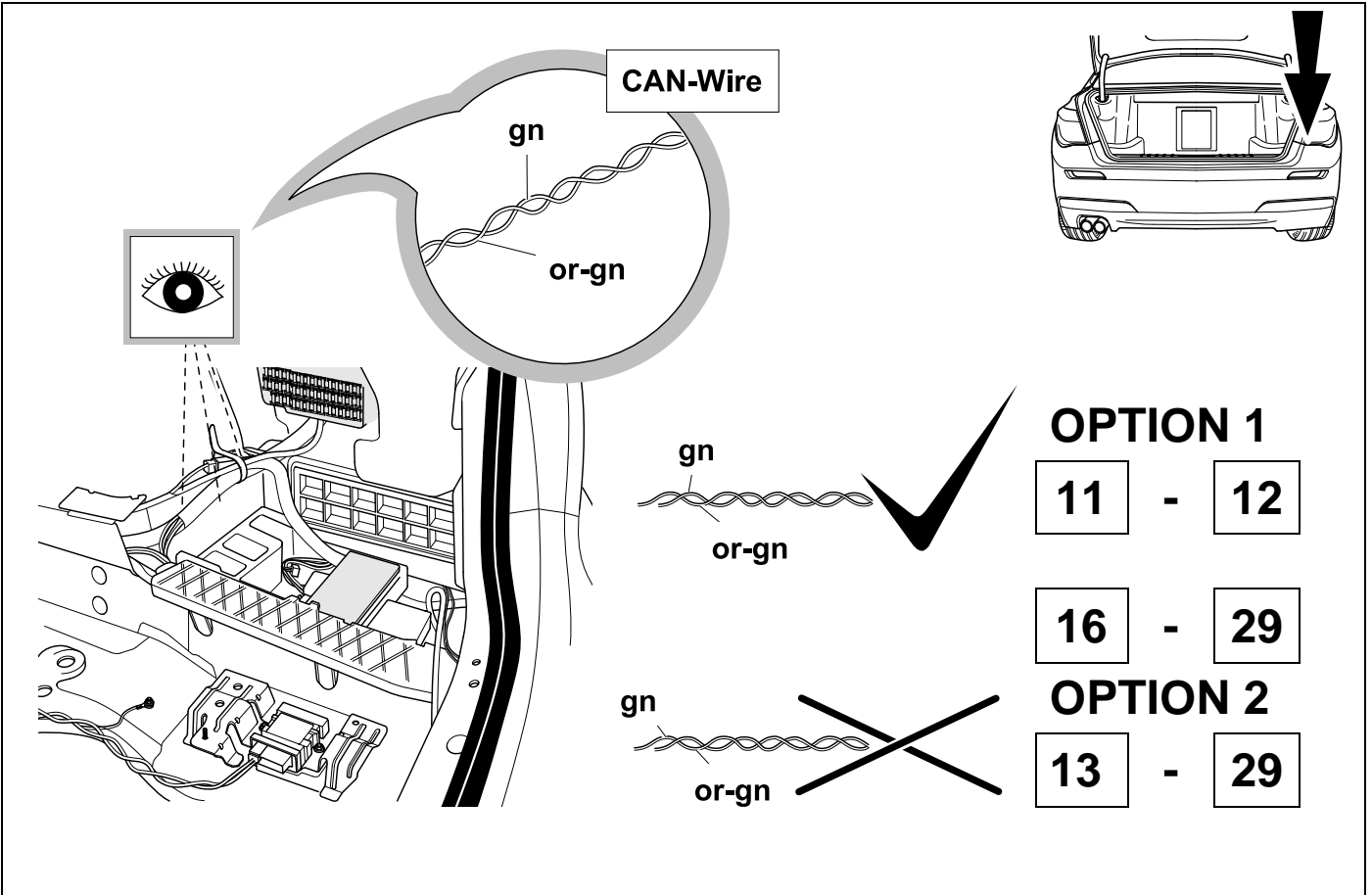




10



21

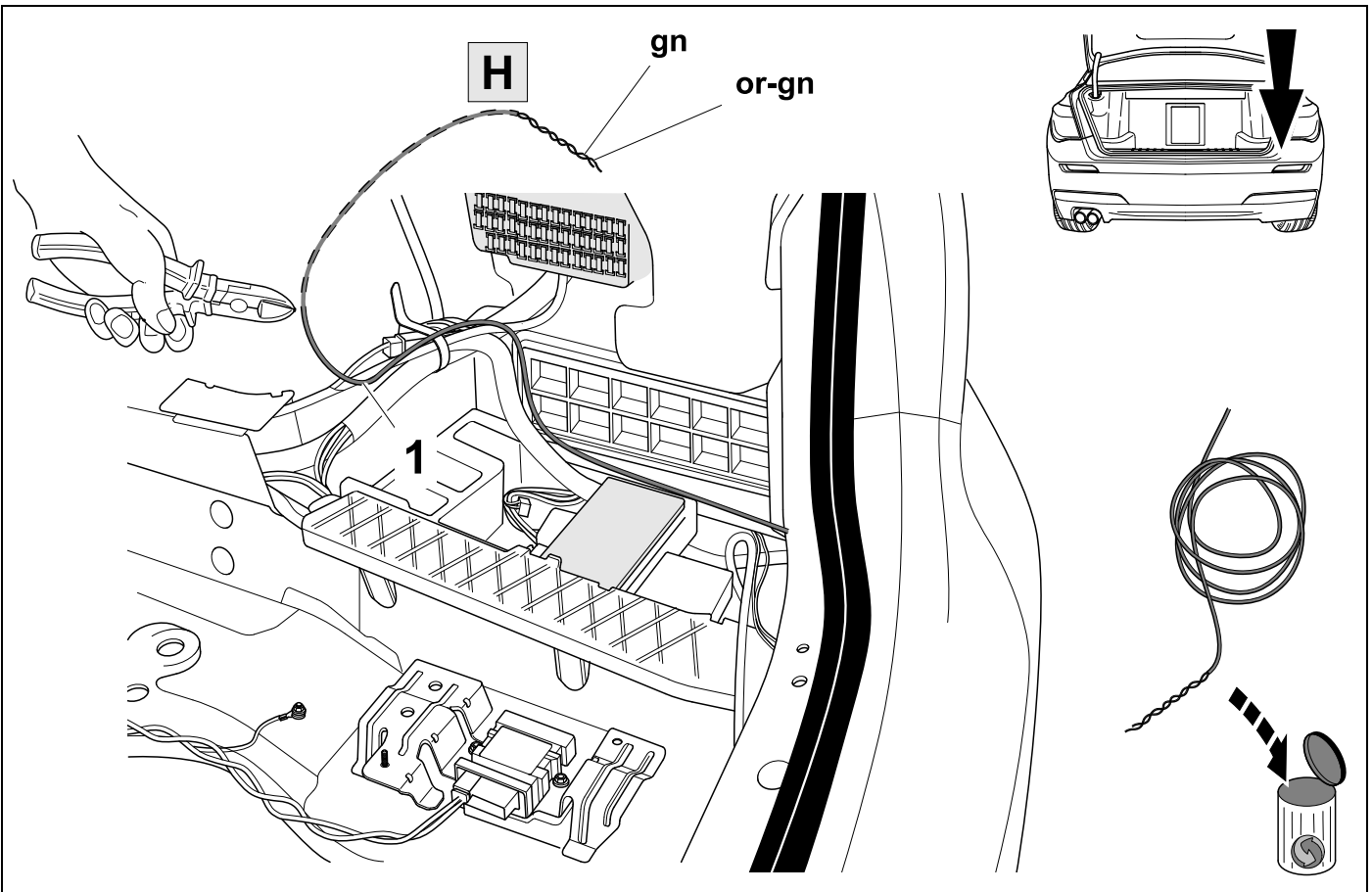


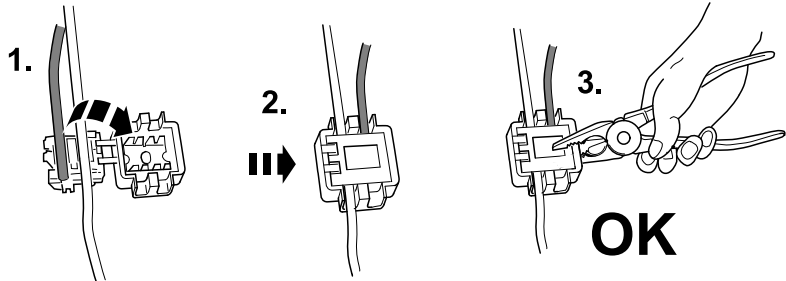
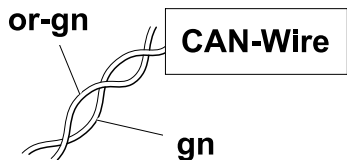
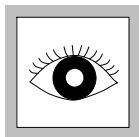
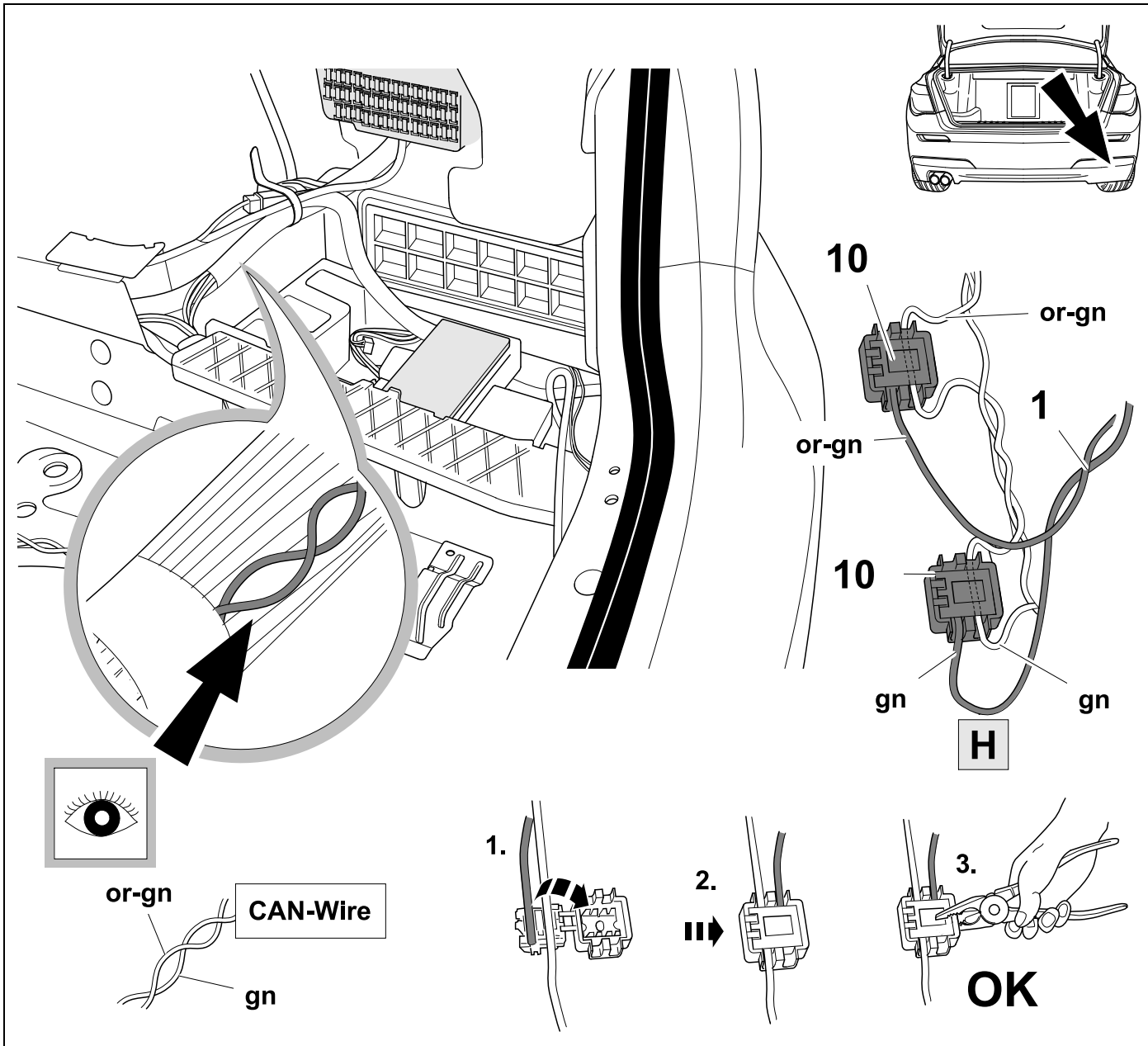
11

**OPTION 1**



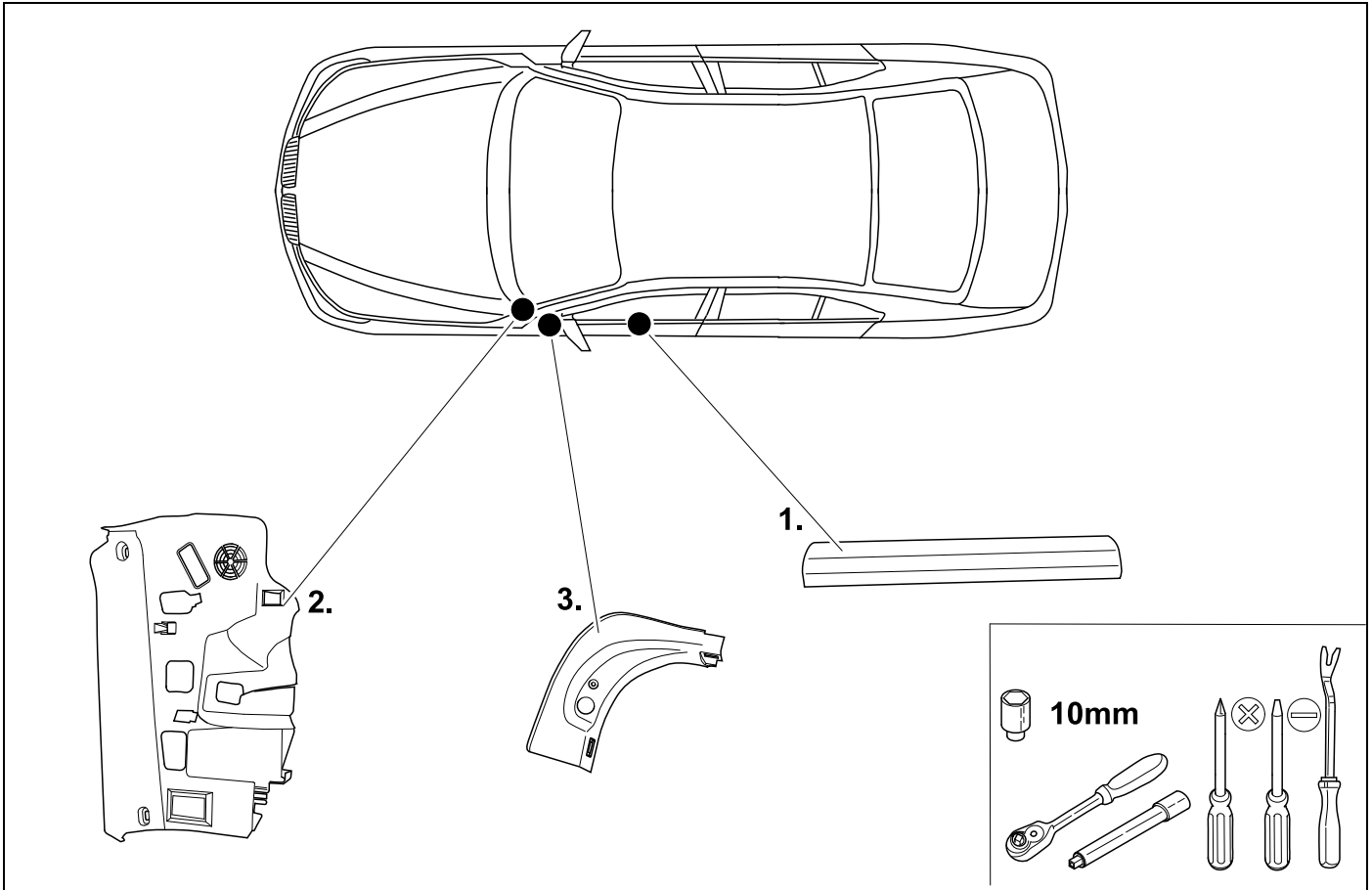
21





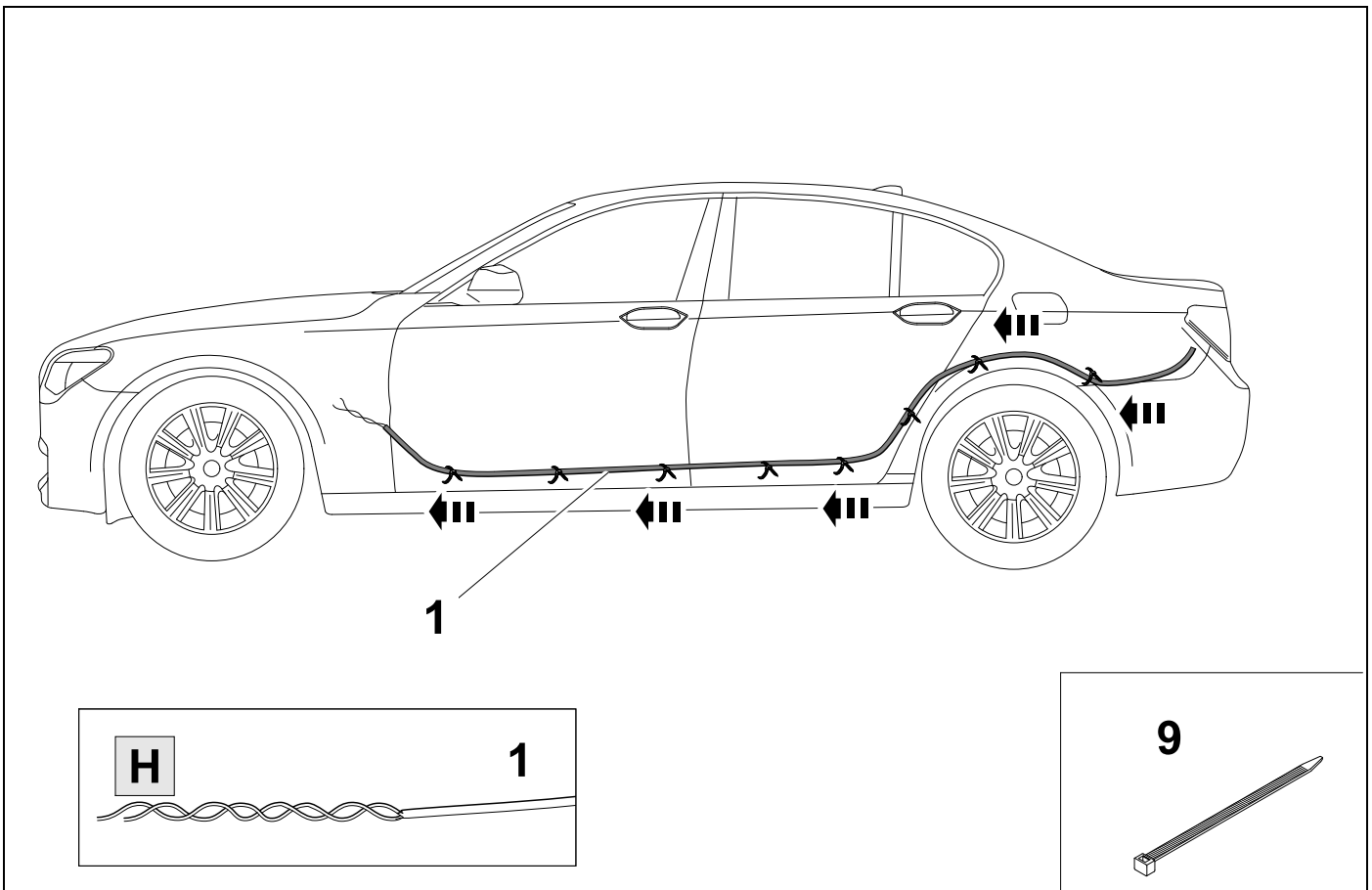
13

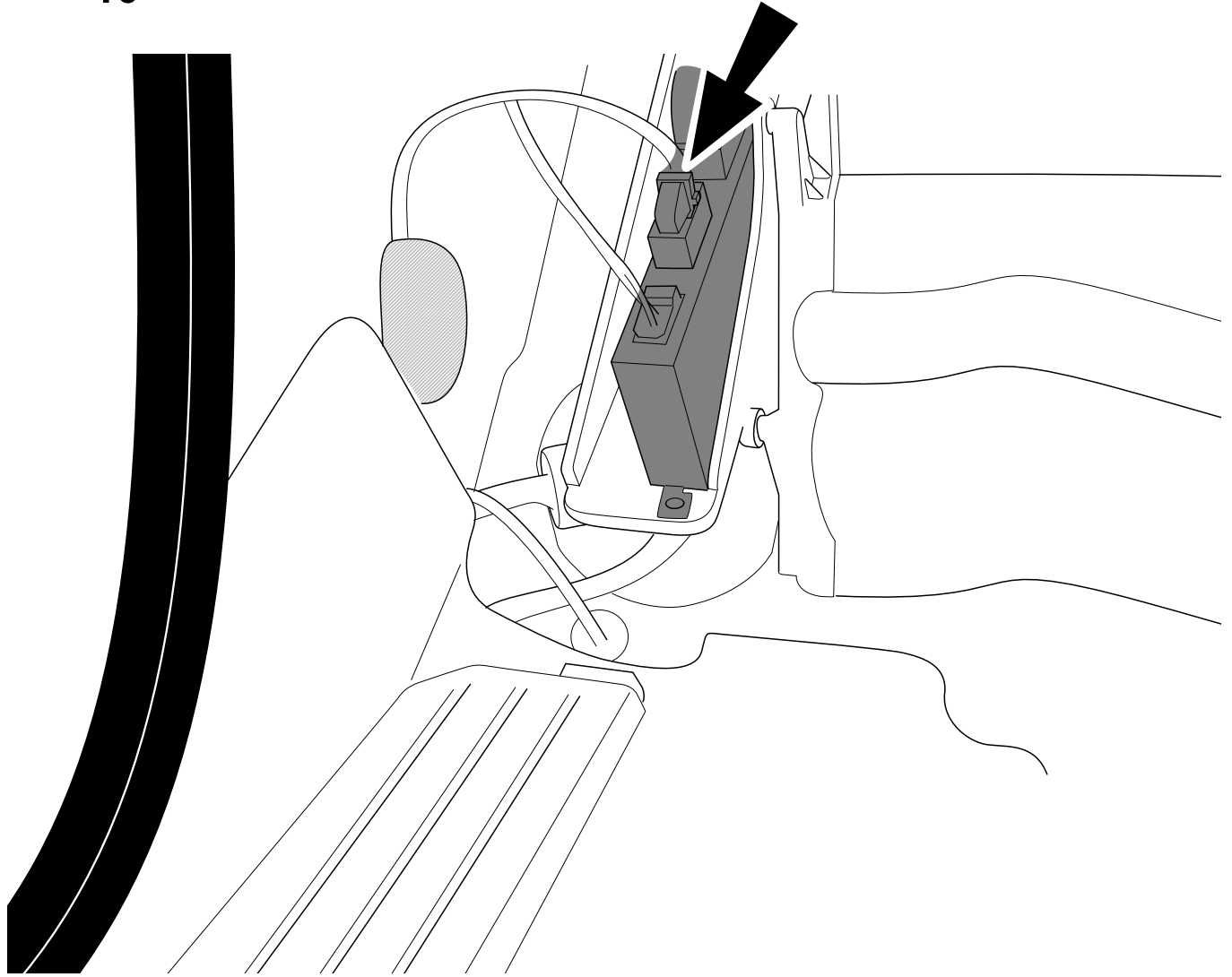
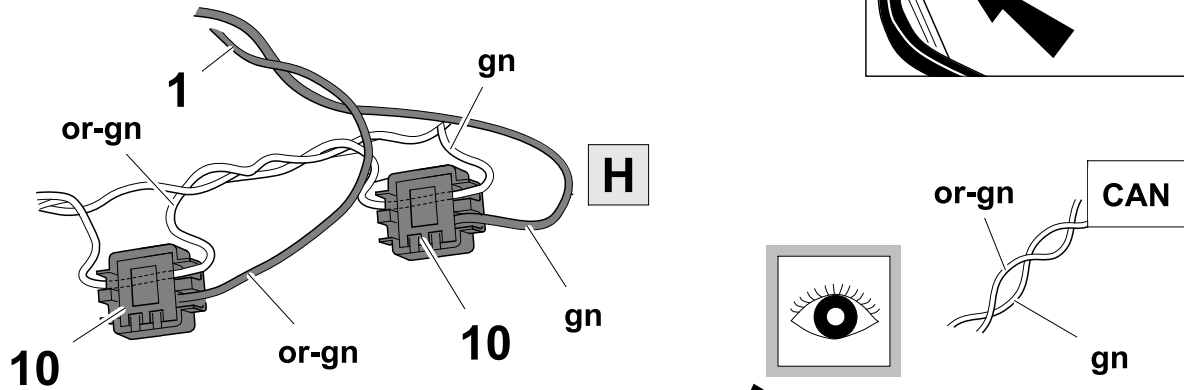
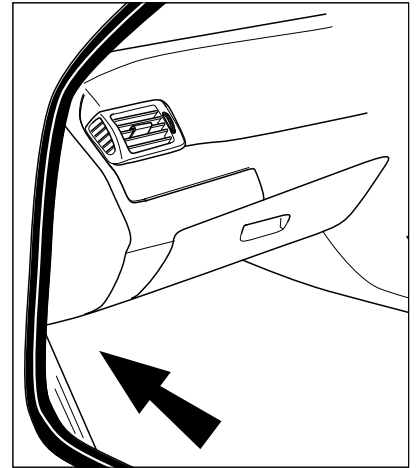
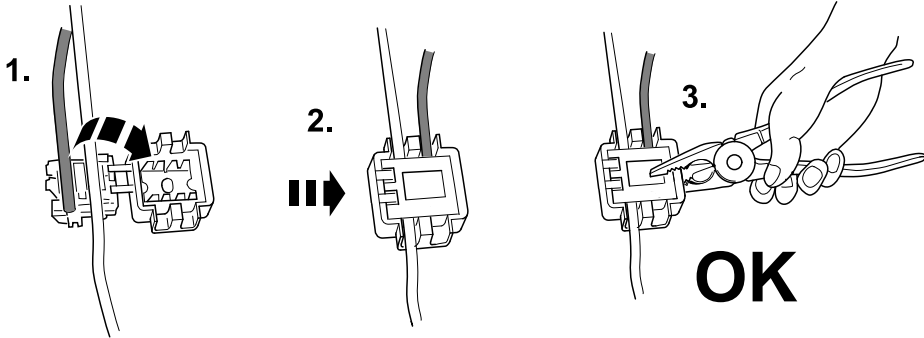
OPTION 2

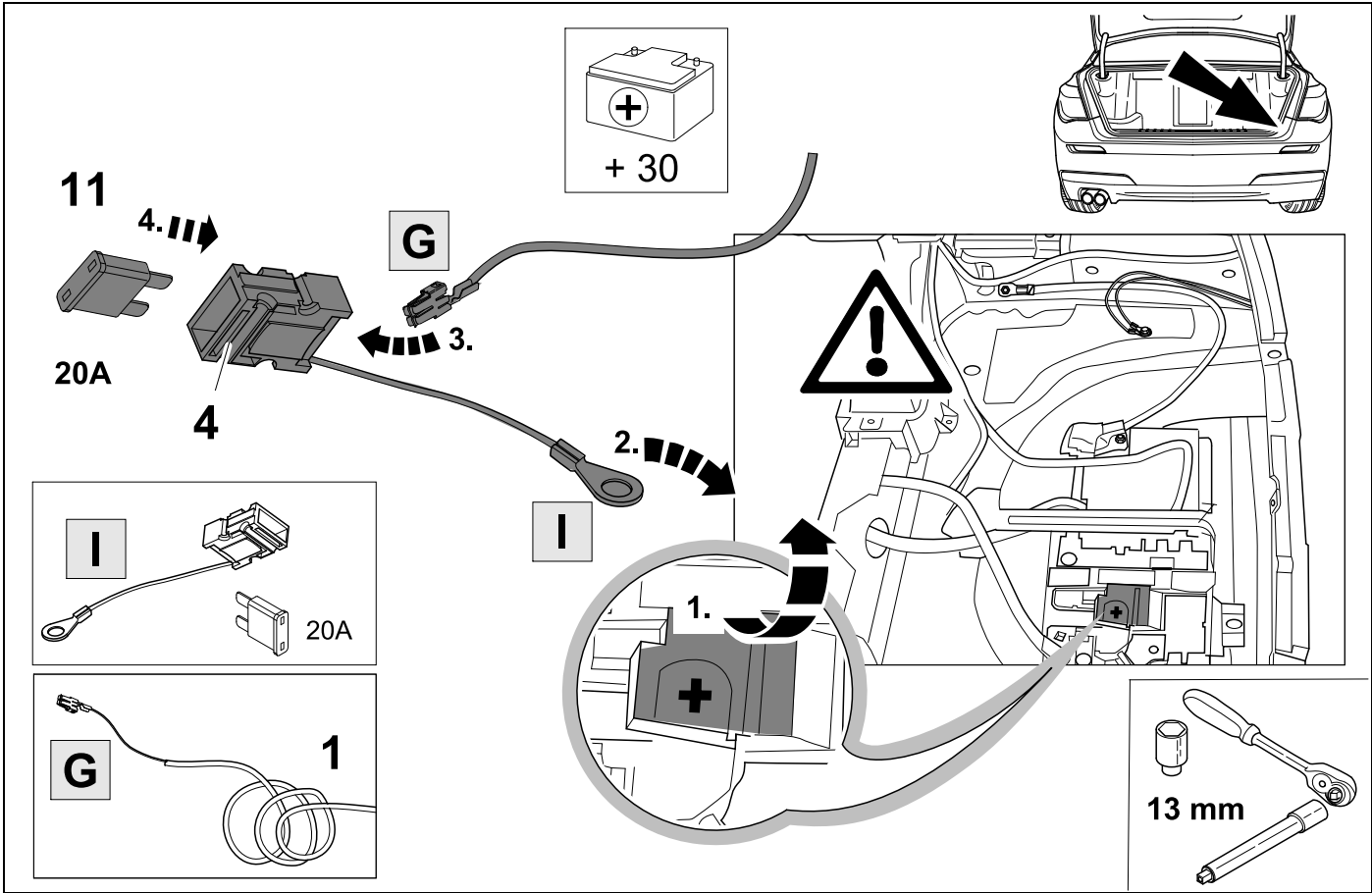


14

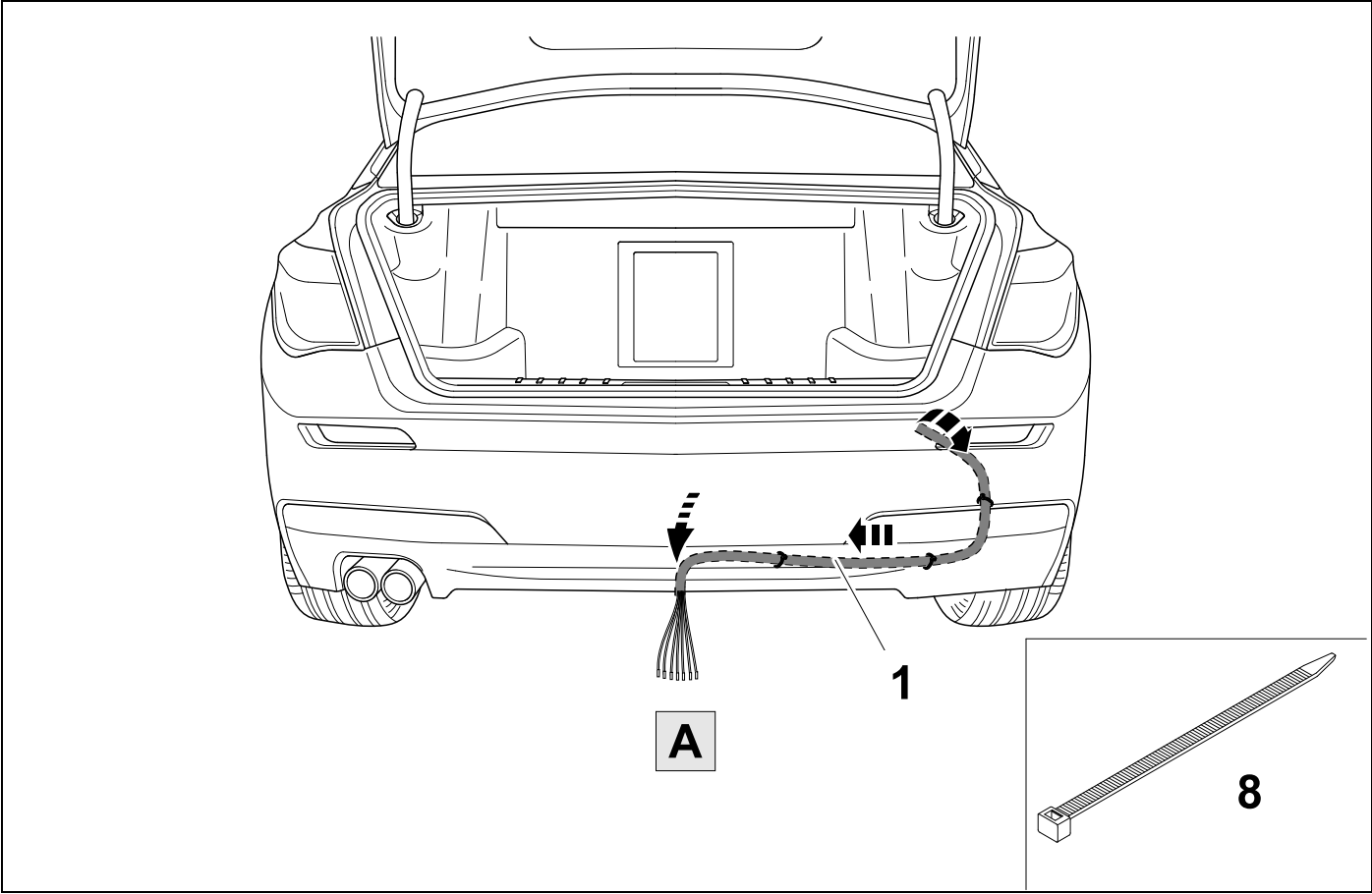
OPTION 2





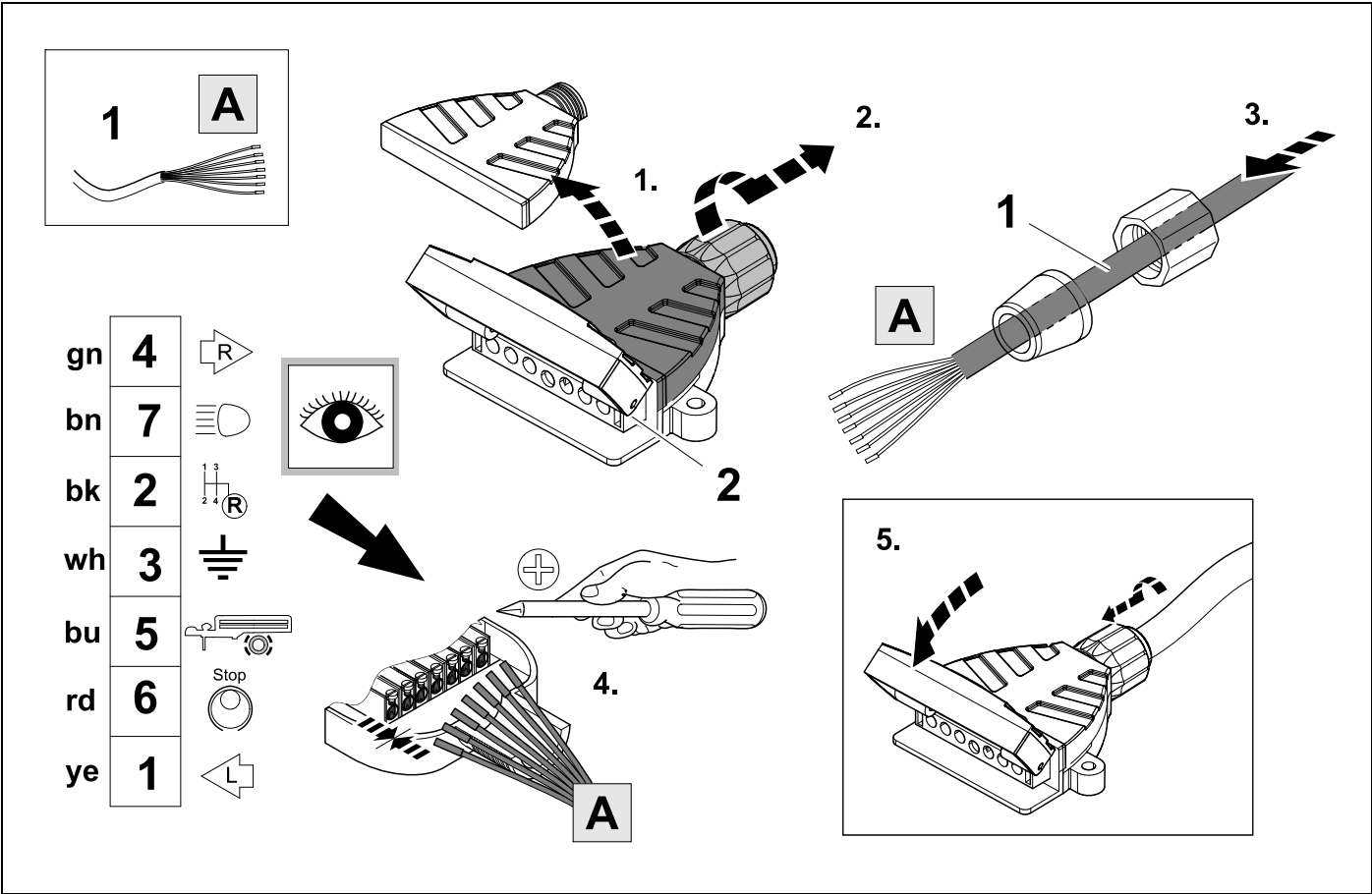


17

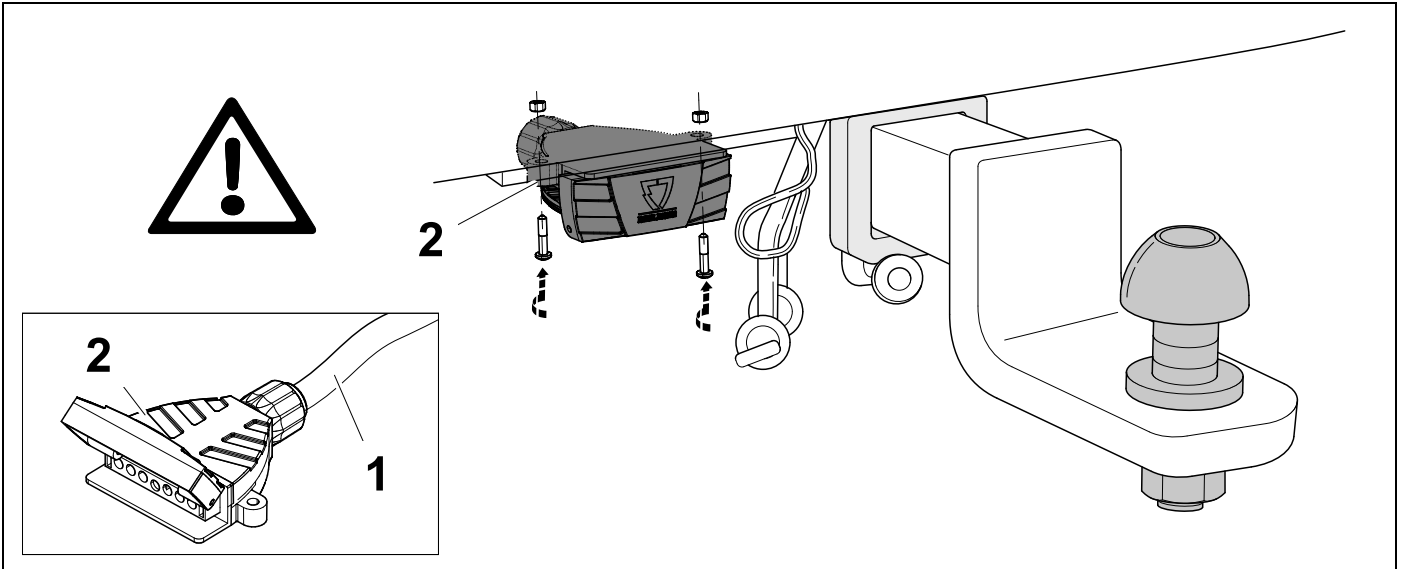


18

👁️ ⇒ 20



19



20



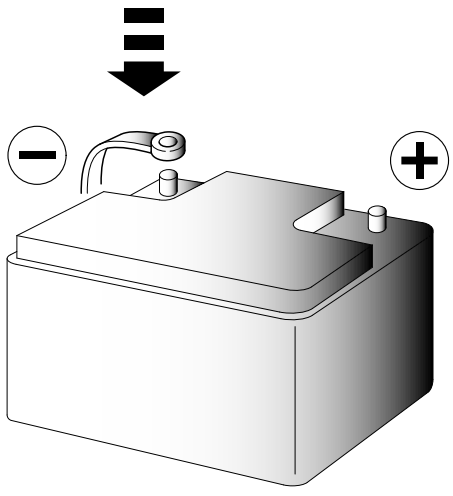
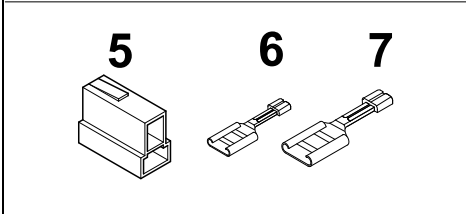
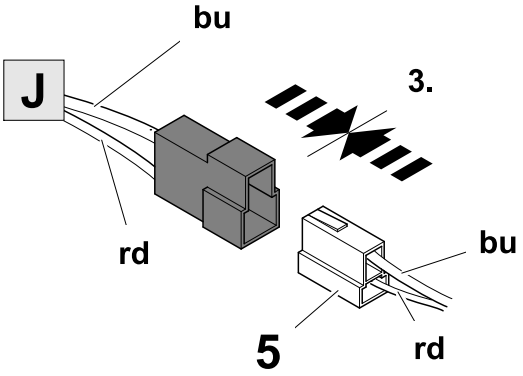
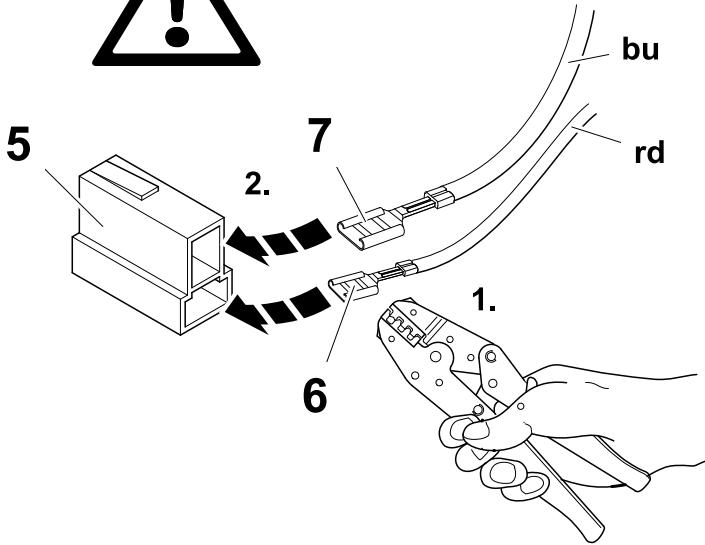
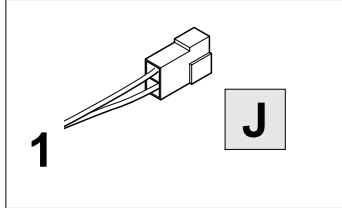
21

1	ye	
2	bk	
3	wh	
4	gn	
5	bu	
6	rd	
7	bn	

21	bk	wh	gy	gn	rd	bu	ye	bn	pu	or	no
	black	white	grey	green	red	blue	yellow	brown	purple	orange	not occupied



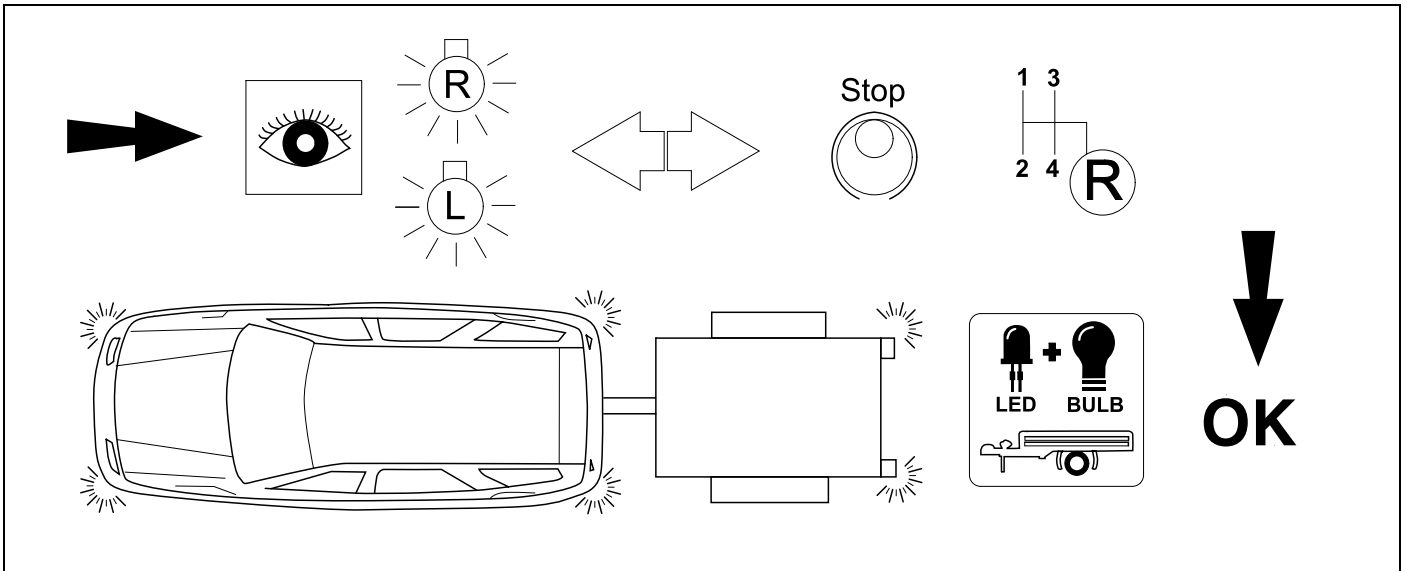
### Trailer Brake Preparation





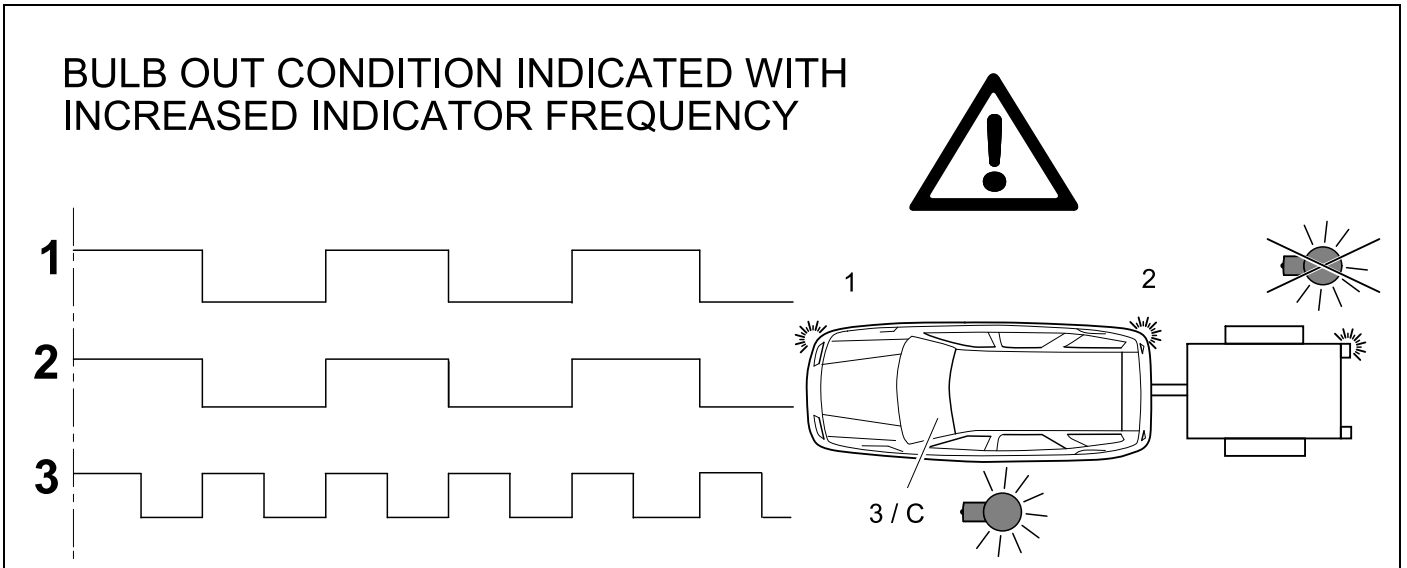
24

# CHECK ALL LIGHTING FUNCTIONS



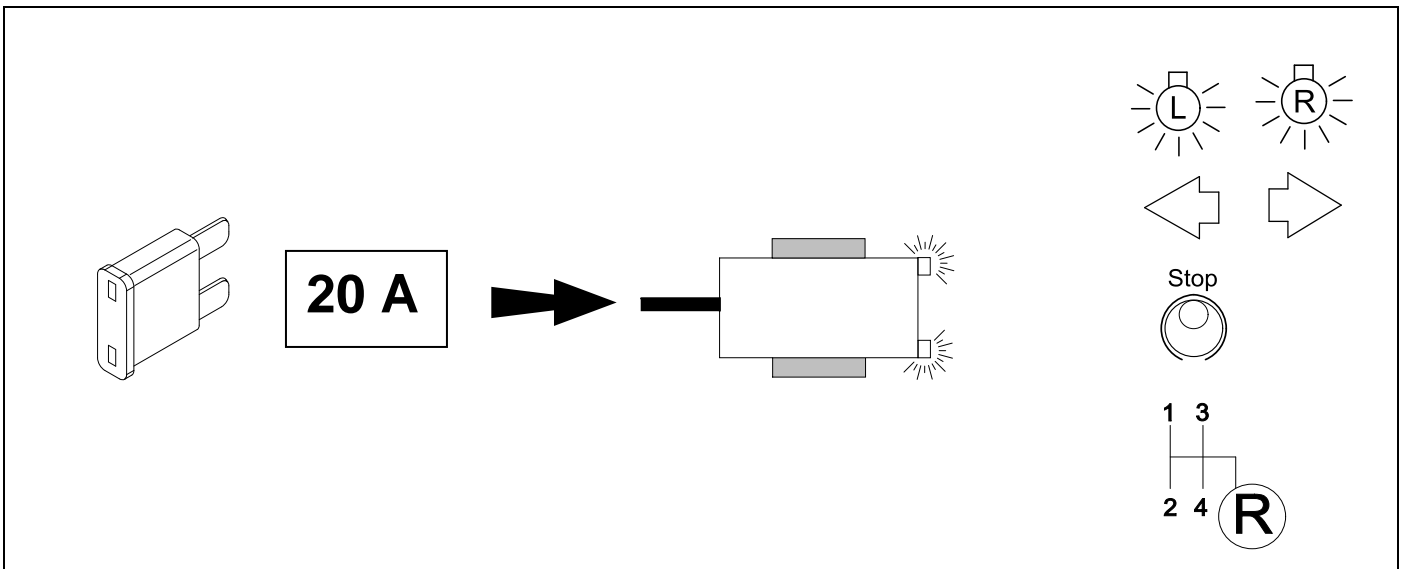
25

# CHECK BULB OUT DETECTION



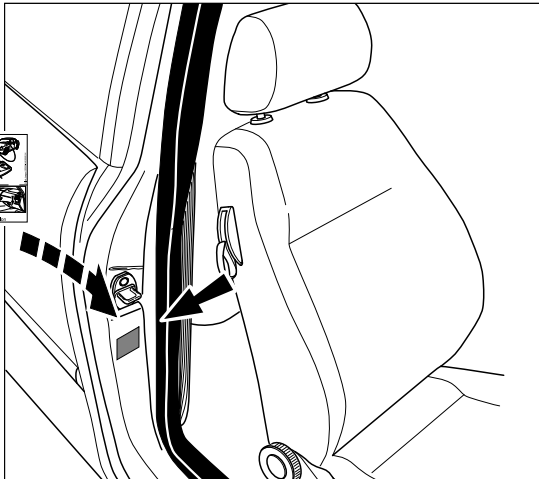
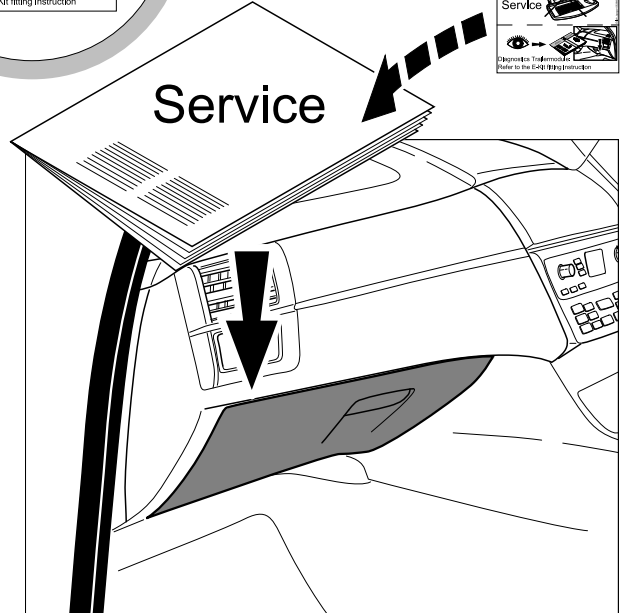
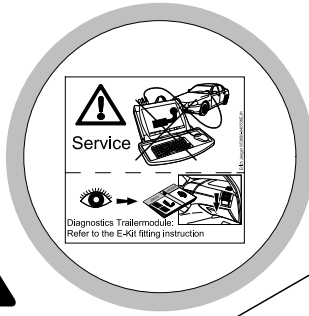
26

👁️ ⇒ 16

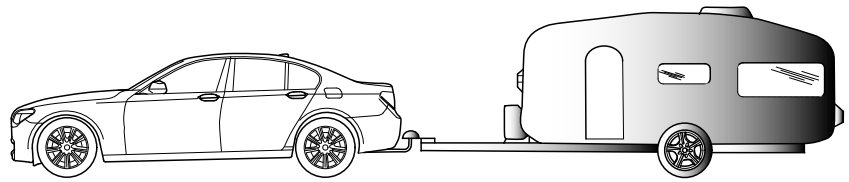
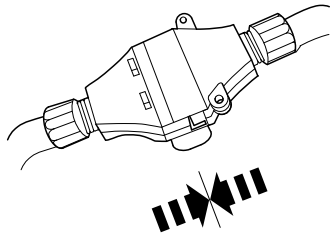




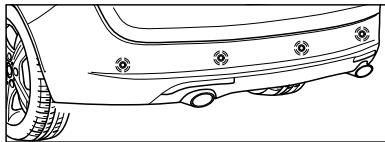
2x 12



If the PDC does not automatically deactivate, coding and initialization of the module might be required.



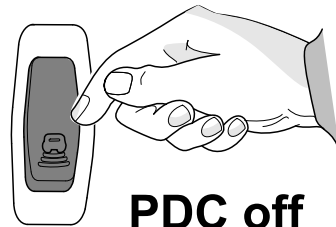
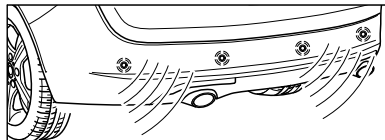
OPTION 1



No Coding



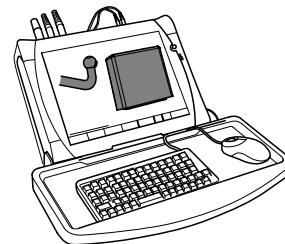
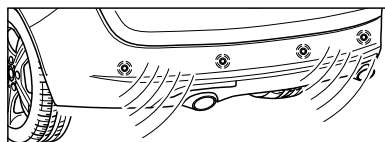
OPTION 2



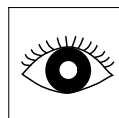
PDC off



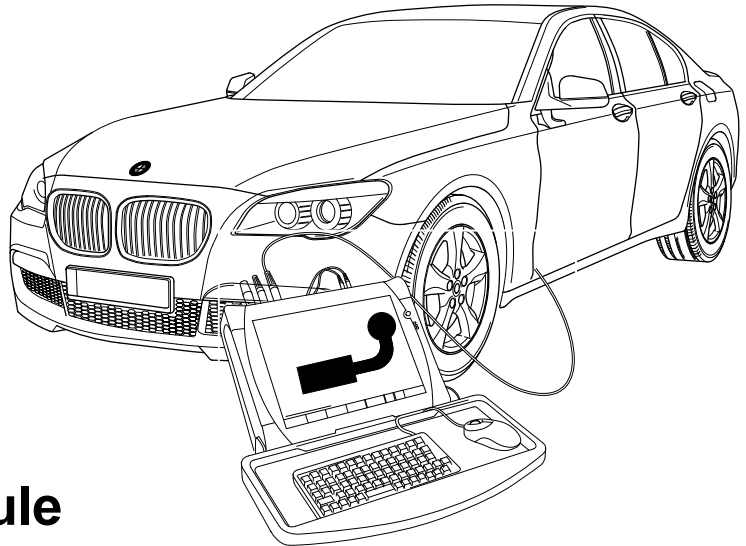
OPTION 3



BMW Service ISTA/P  
Initialize Trailer Module



29



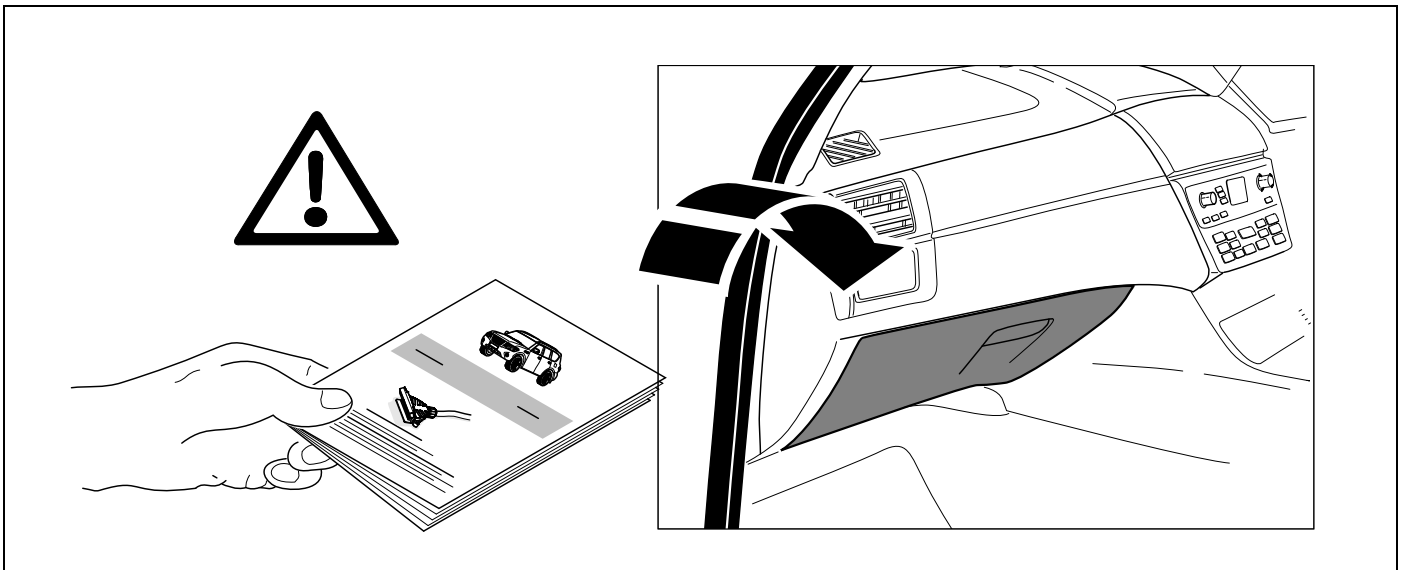
## BMW Service ISTA/P Initialize Trailer Module



**Please effect coding as follows:**

- Connect computer to vehicle
- Start ISTA/P
- Click "Modification / Upgrades"
- Scan Action plan
- Click „Coding (Ethernet)“
- Scan Action program follow-up
- Final report checking

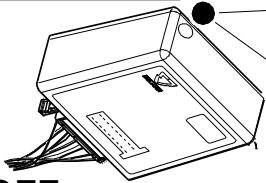
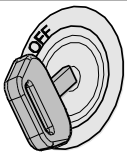
**After the effected connection, the rear park assist system will also automatically be deactivated in trailer operation!**



Subject to change in terms of construction, equipment and colour, and may contain errors.  
The information and illustrations are non-binding.

# Status LED for self-diagnosis

## Operation Support



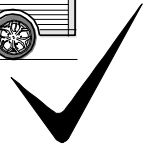
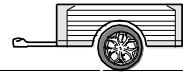
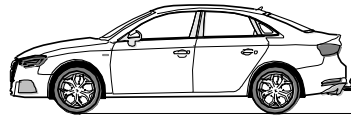
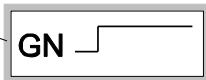
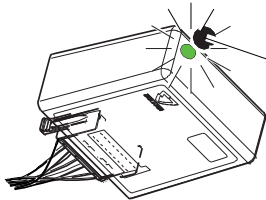
No CAN-Data =



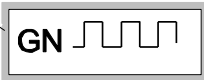
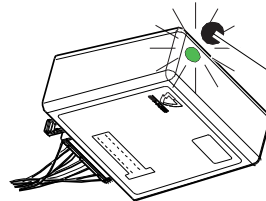
Standby / Sleepmode



Ignition OFF



Ignition ON



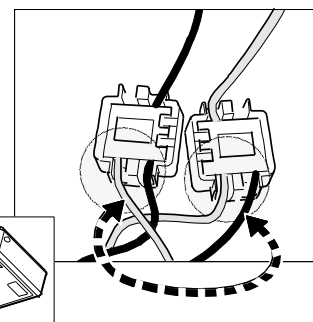
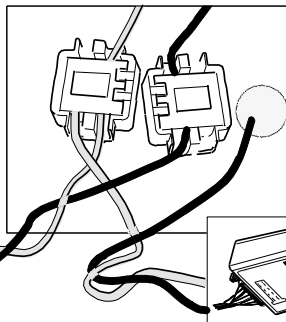
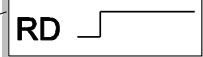
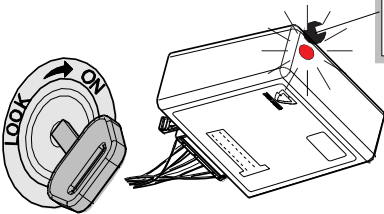
Ignition ON

## Failure Support

CAN-Data Wire

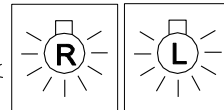


1x max. 5 min.

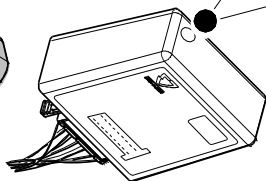


Ignition ON

Failure indicated by the module LED glowing red for a maximum of 5 minutes. If trailer connected the tail lights will also glow indicating failure of CAN signal.



Ignition ON



or

