

BMW X1

F48

10/15 >>

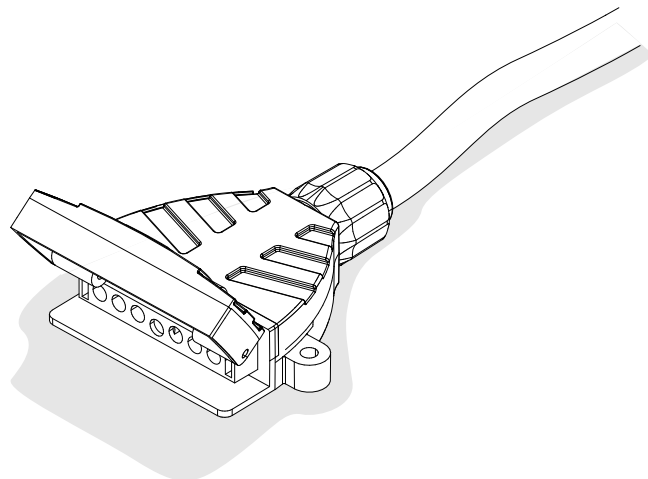
BMW X2

F39

03/18 >>

750057

Scan this to download
instructions for other models



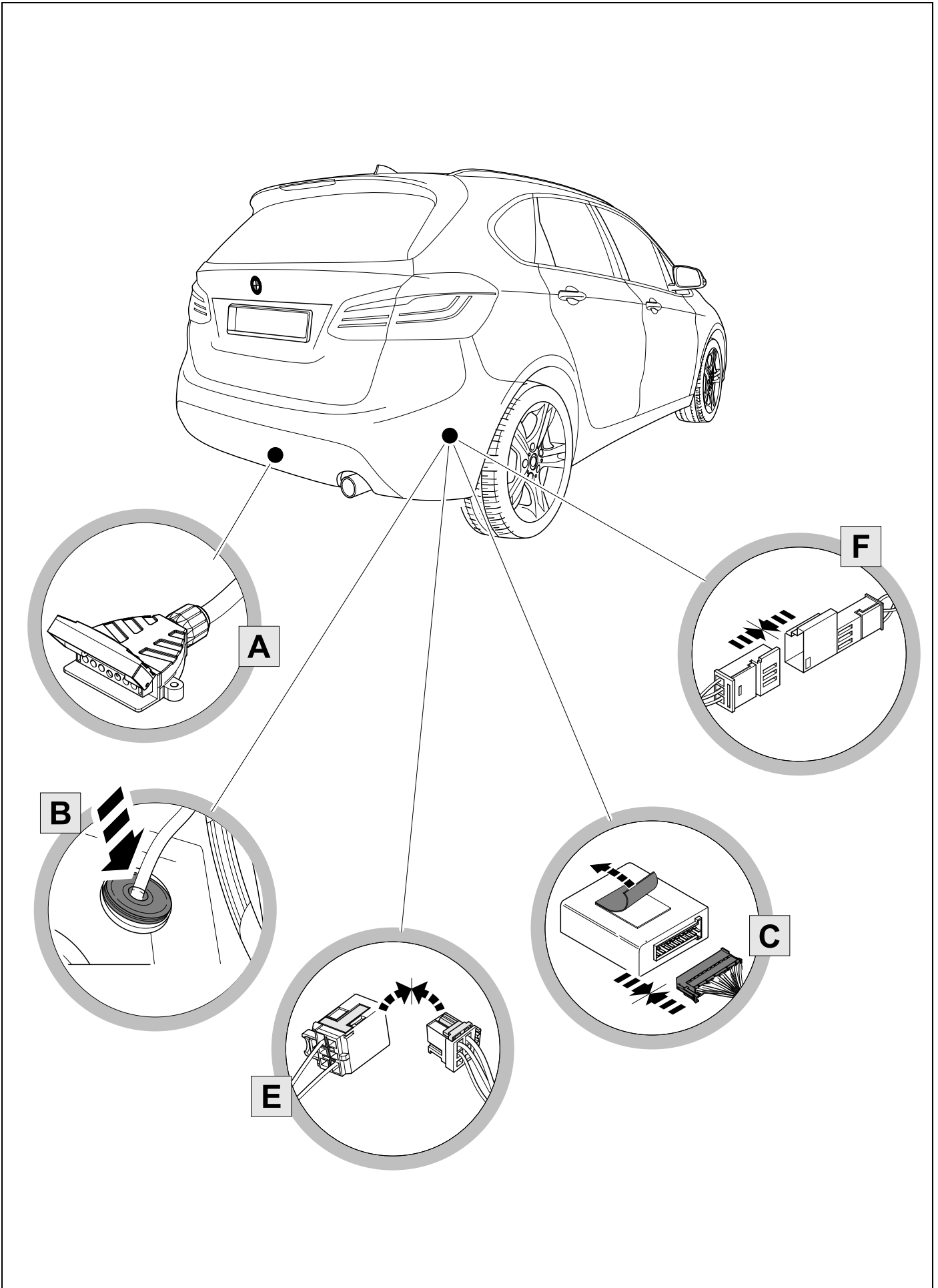
Installation instructions

Reference:

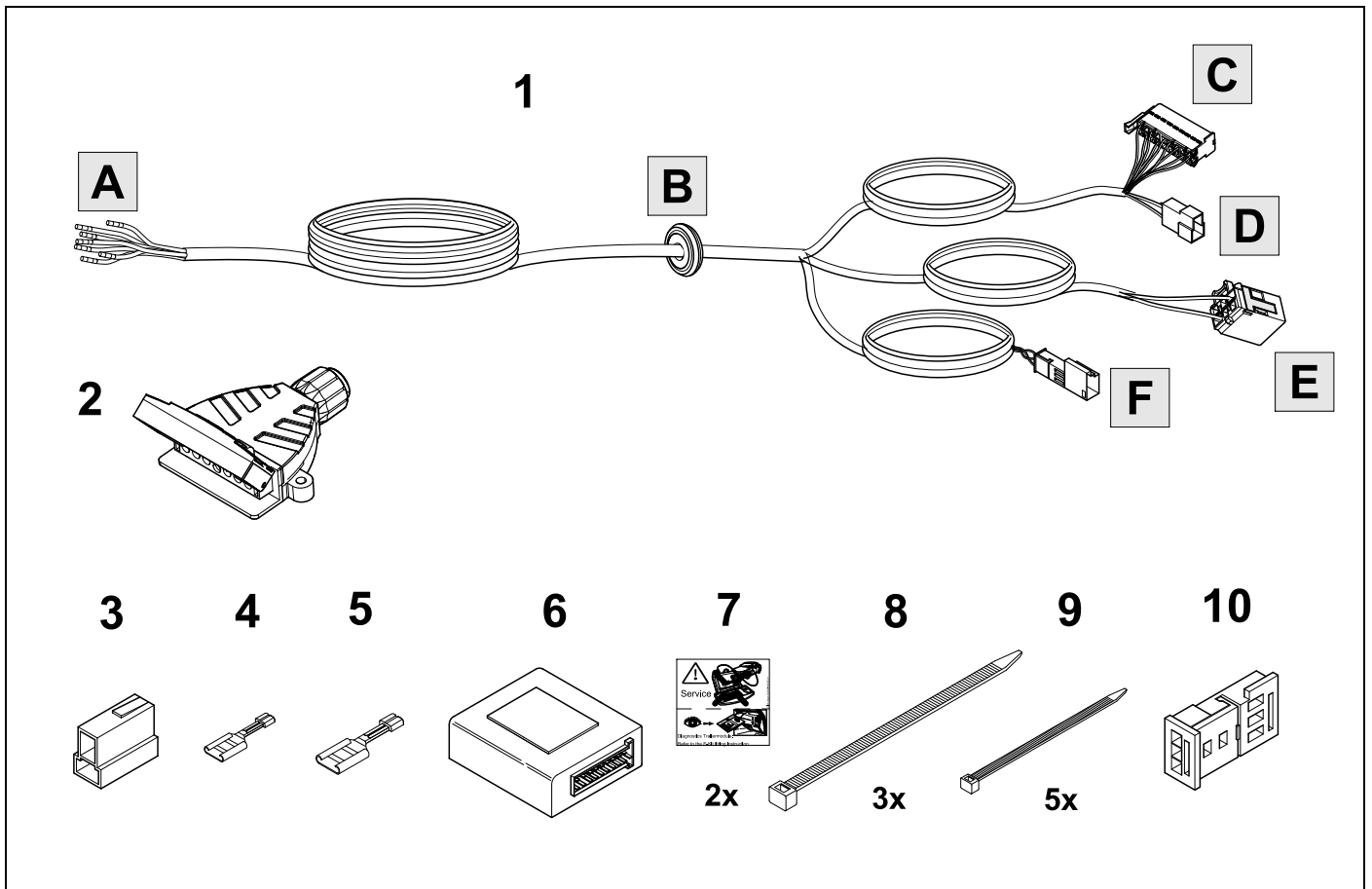
The following information must be reviewed before beginning the assembly:



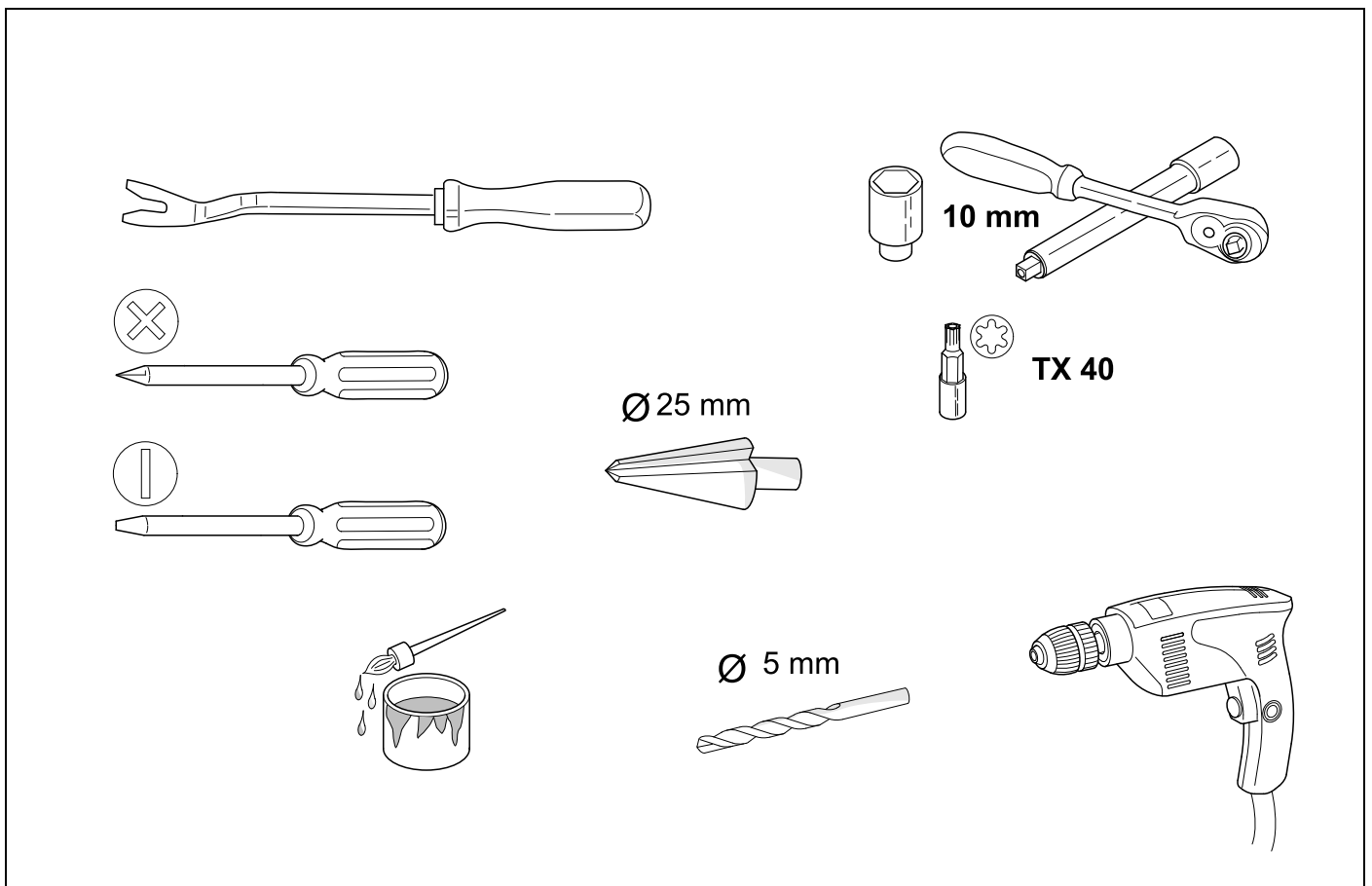
The installation instructions are to be thoroughly read.
The installation should be carried out by qualified personnel with the relevant technical knowledge.
The vehicle manufacturers' current technical notices and information on retrofitting must be followed.
The removal and replacement instructions found in the current repair manuals must be followed.
It must be ensured that the vehicle is technically suitable for the installation of a trailer hitch.



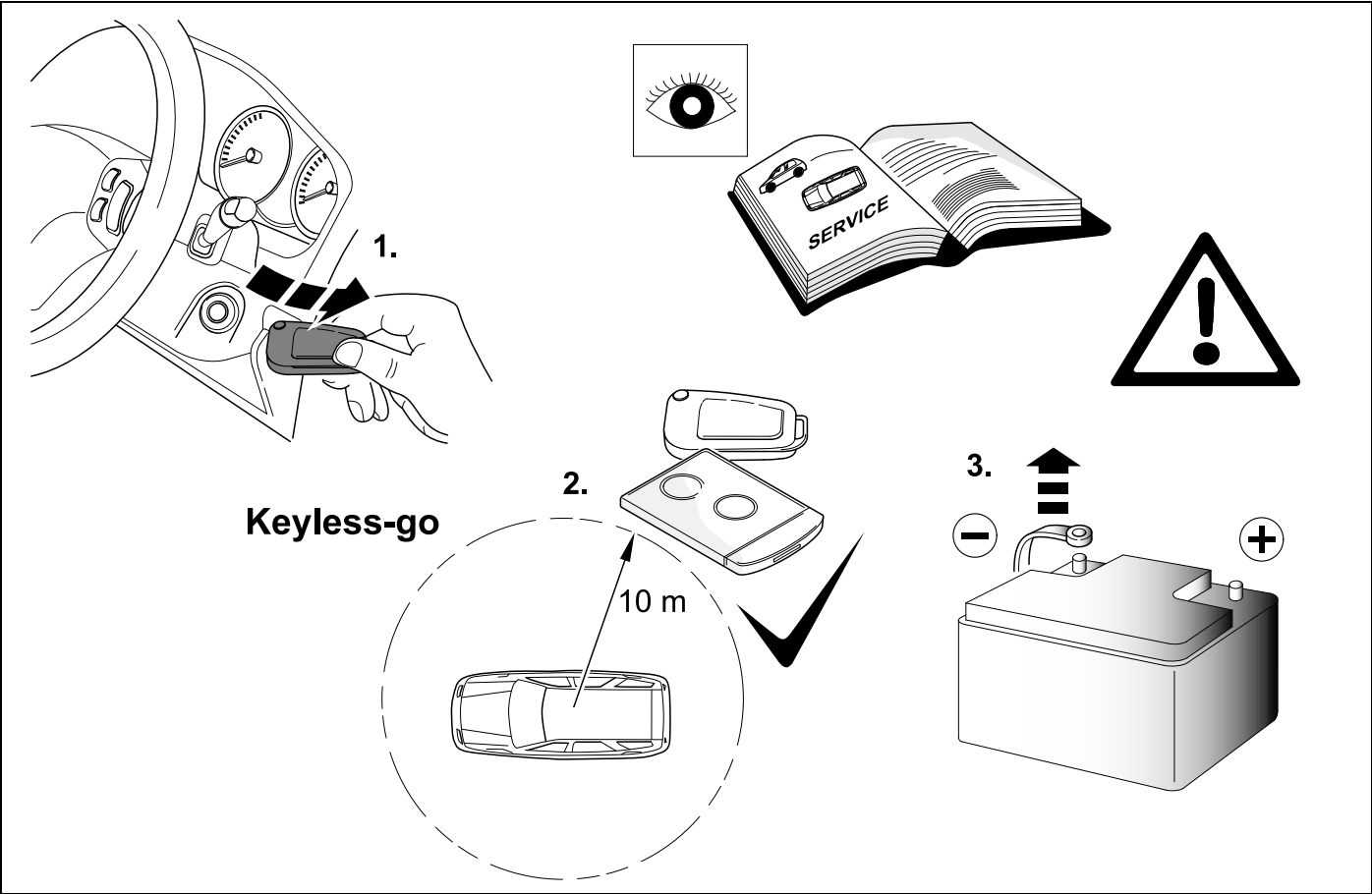
KIT

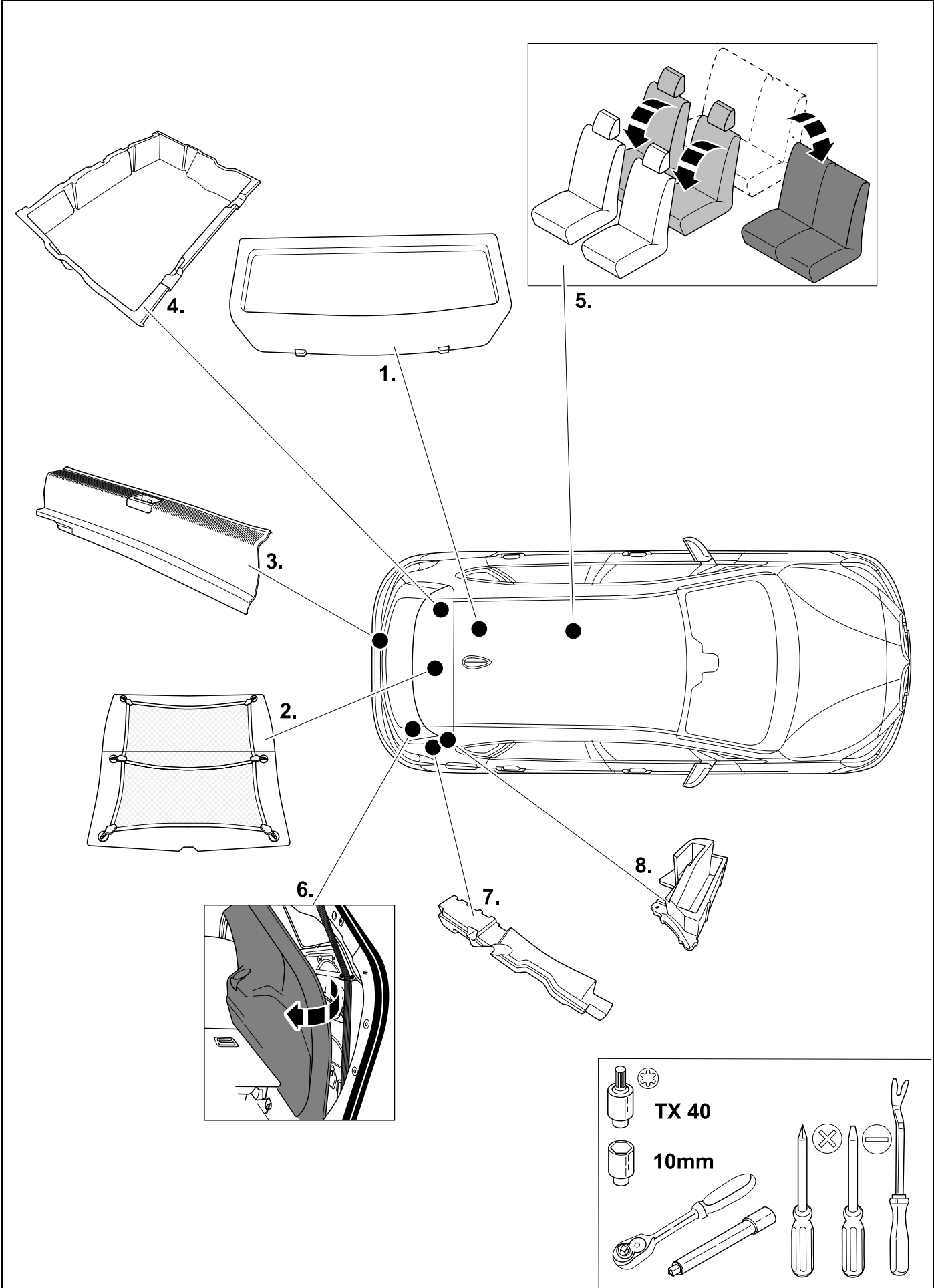


TOOLS



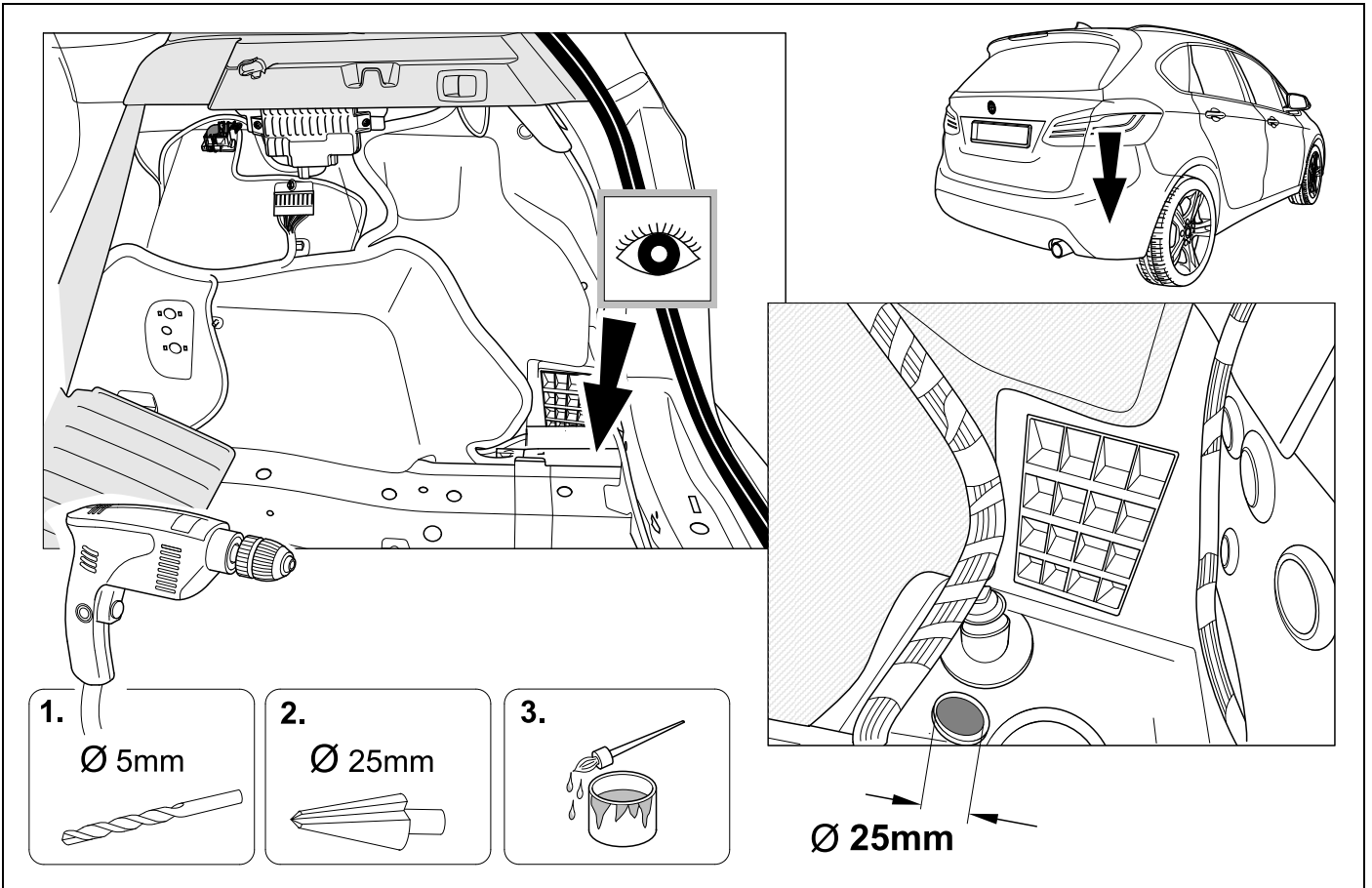
1





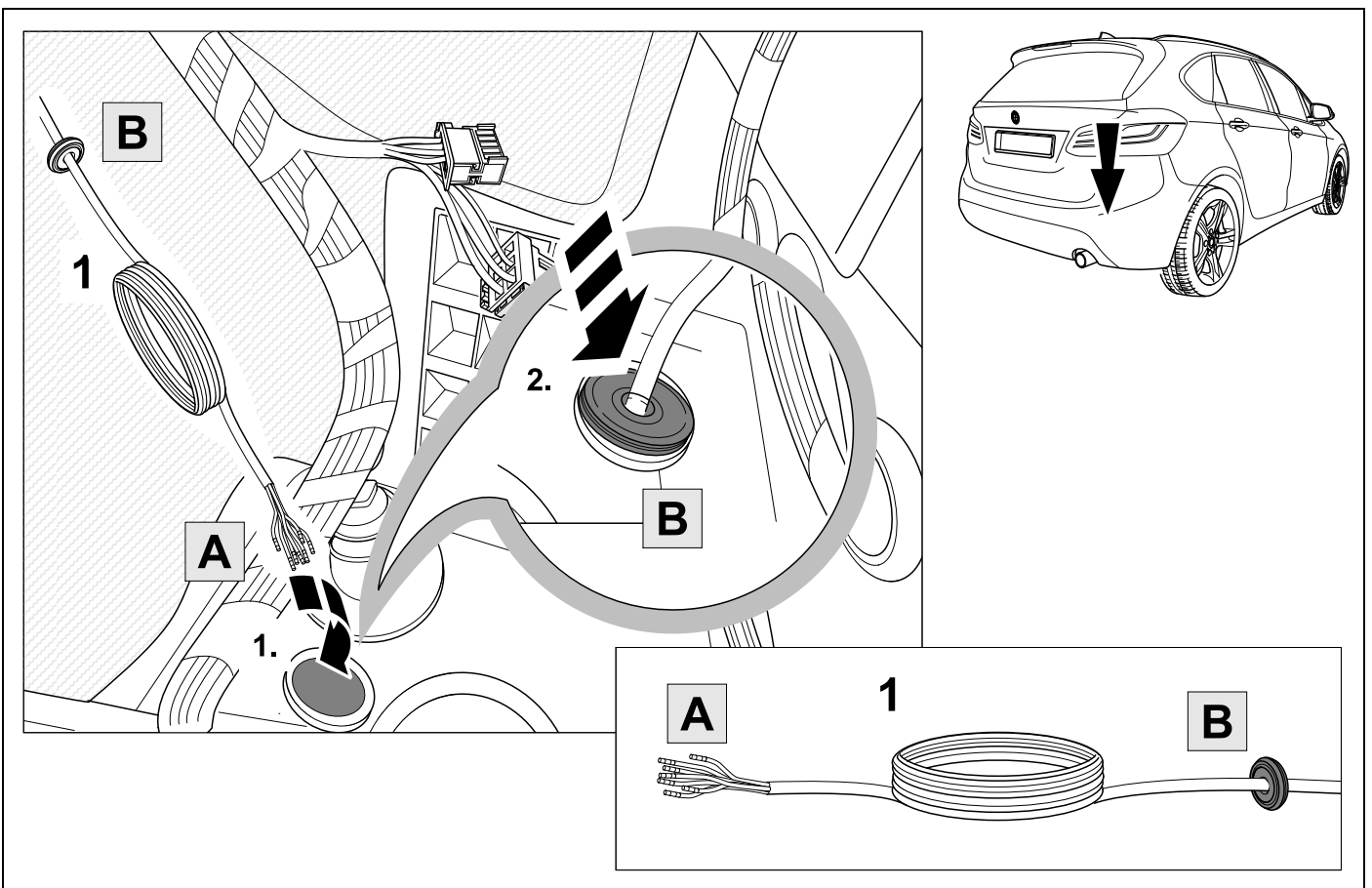
3

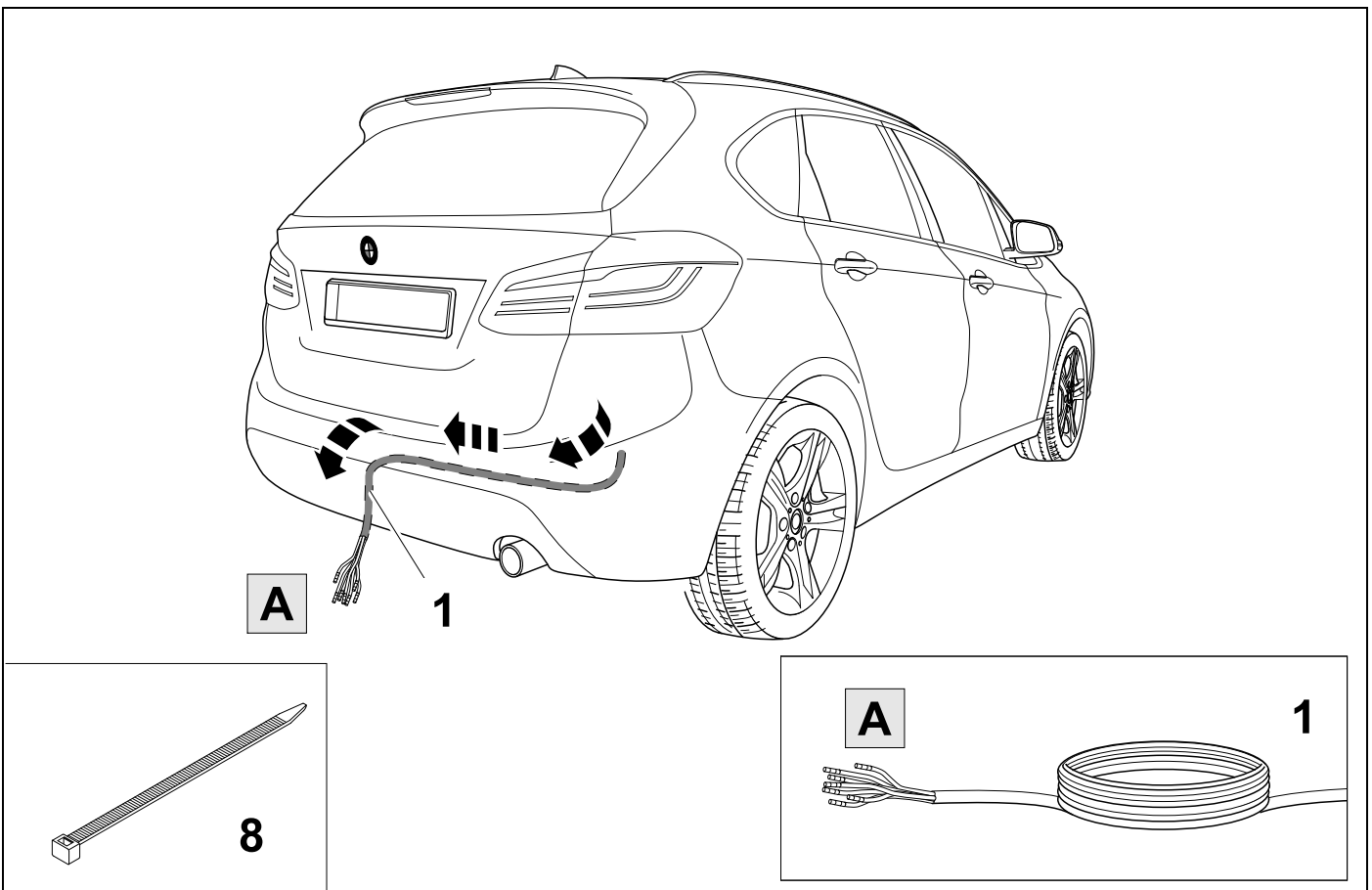
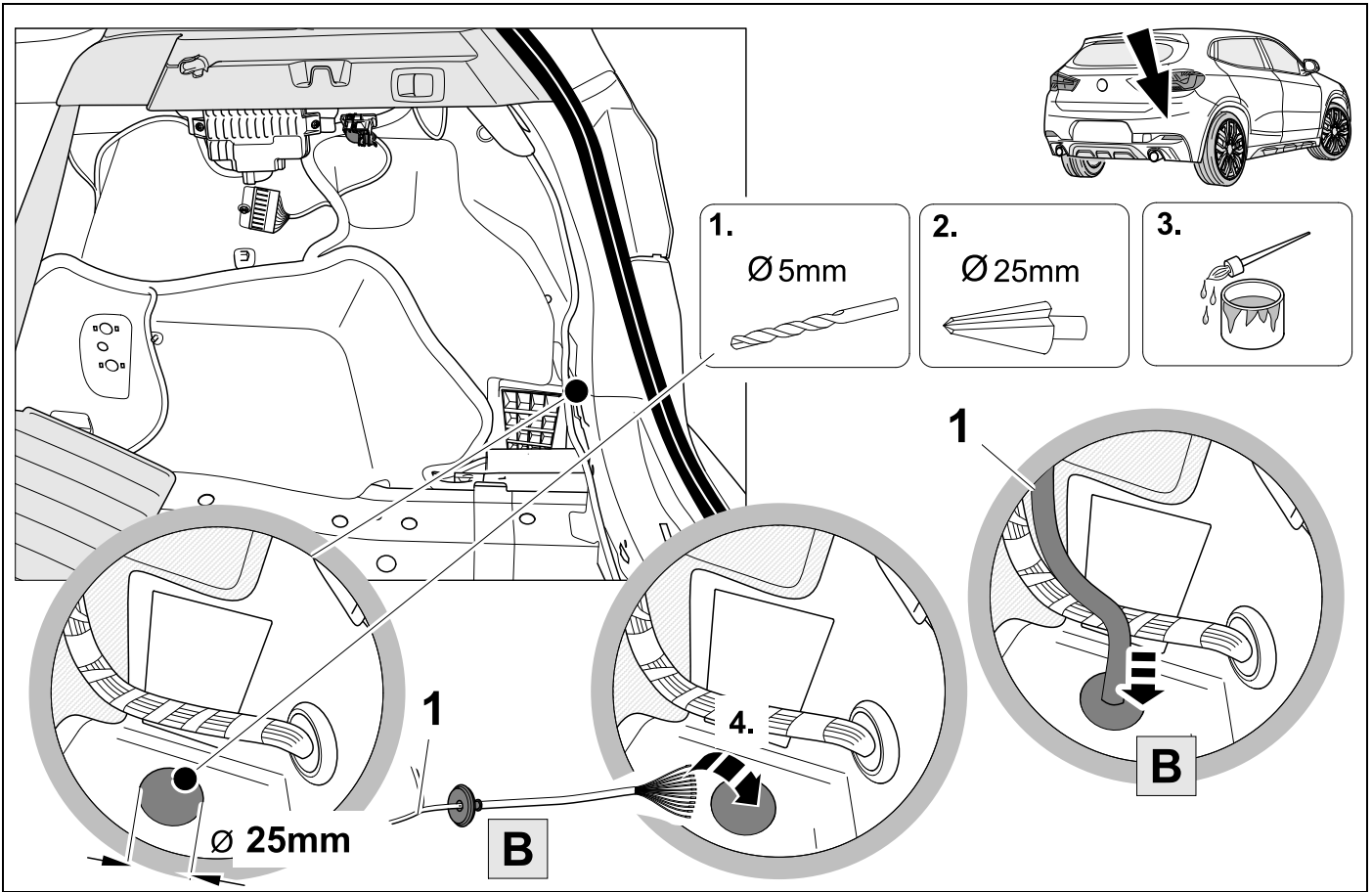
BMW X1

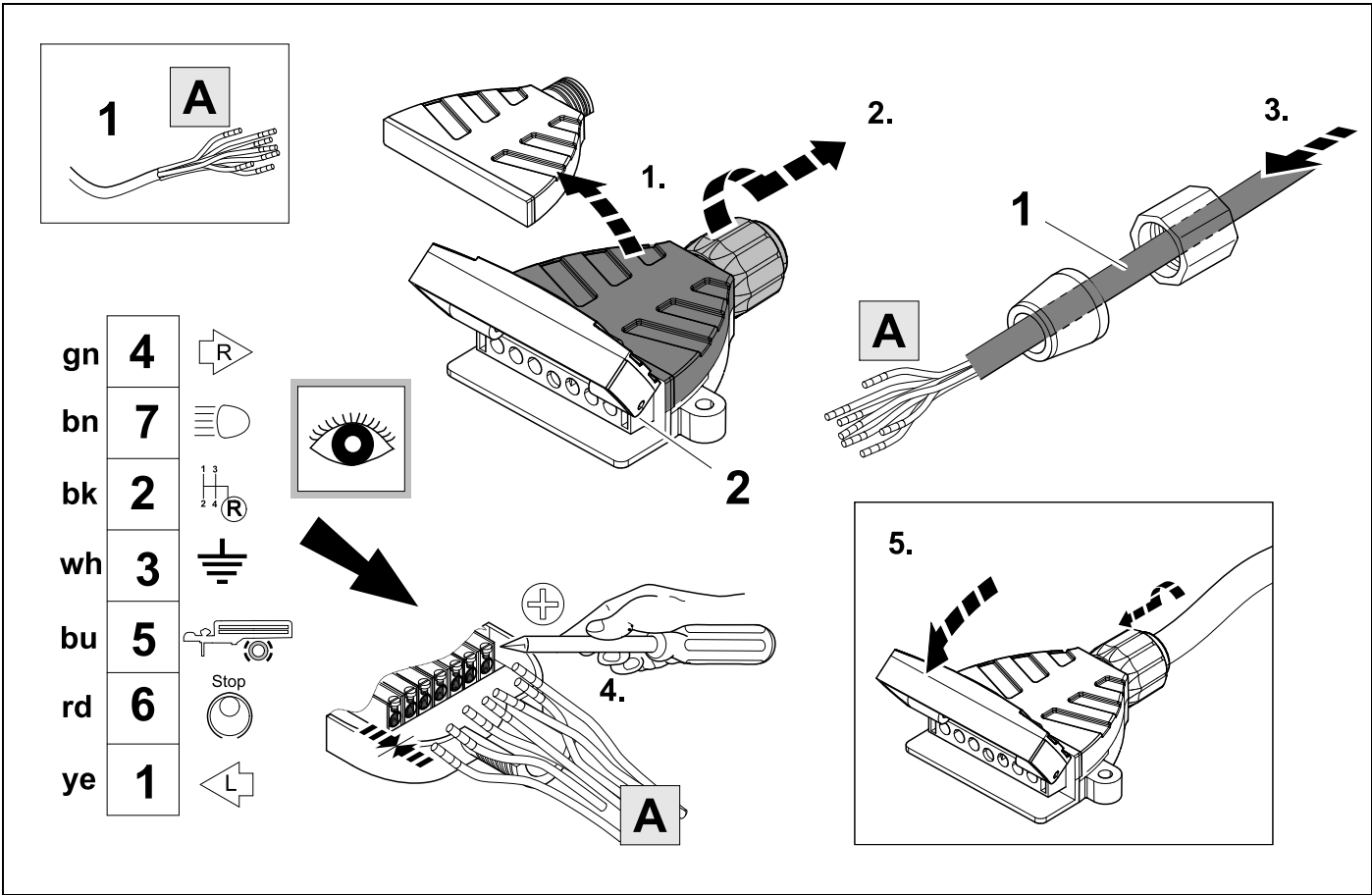


4

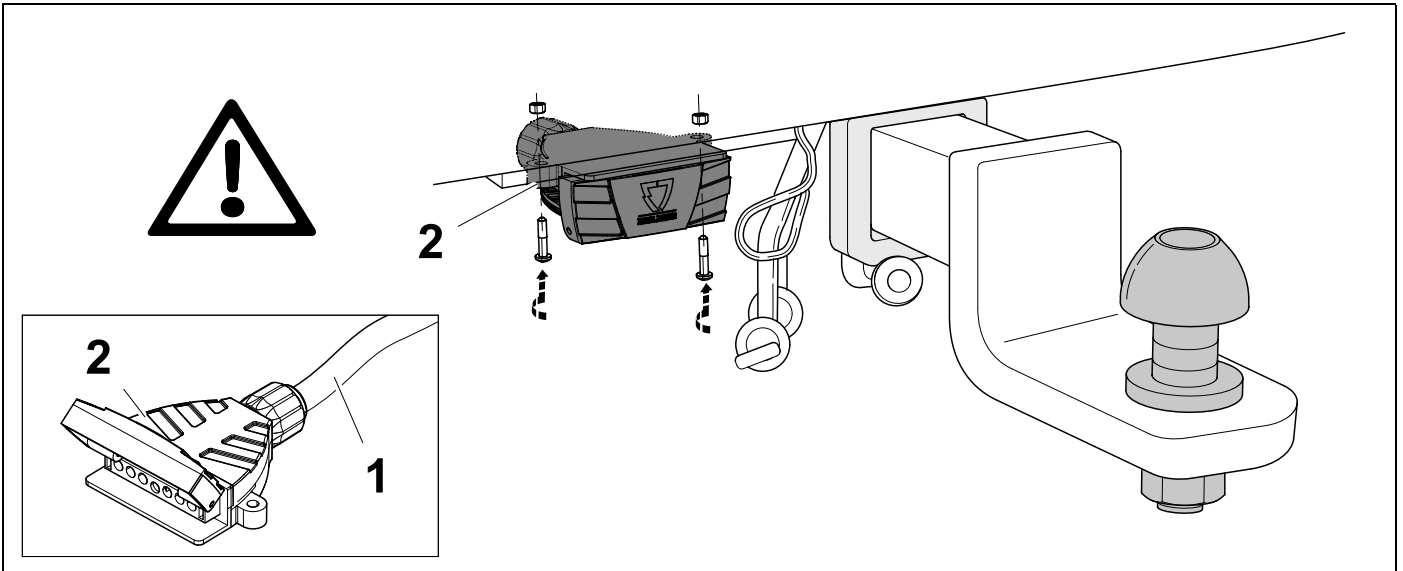
BMW X1







8



9

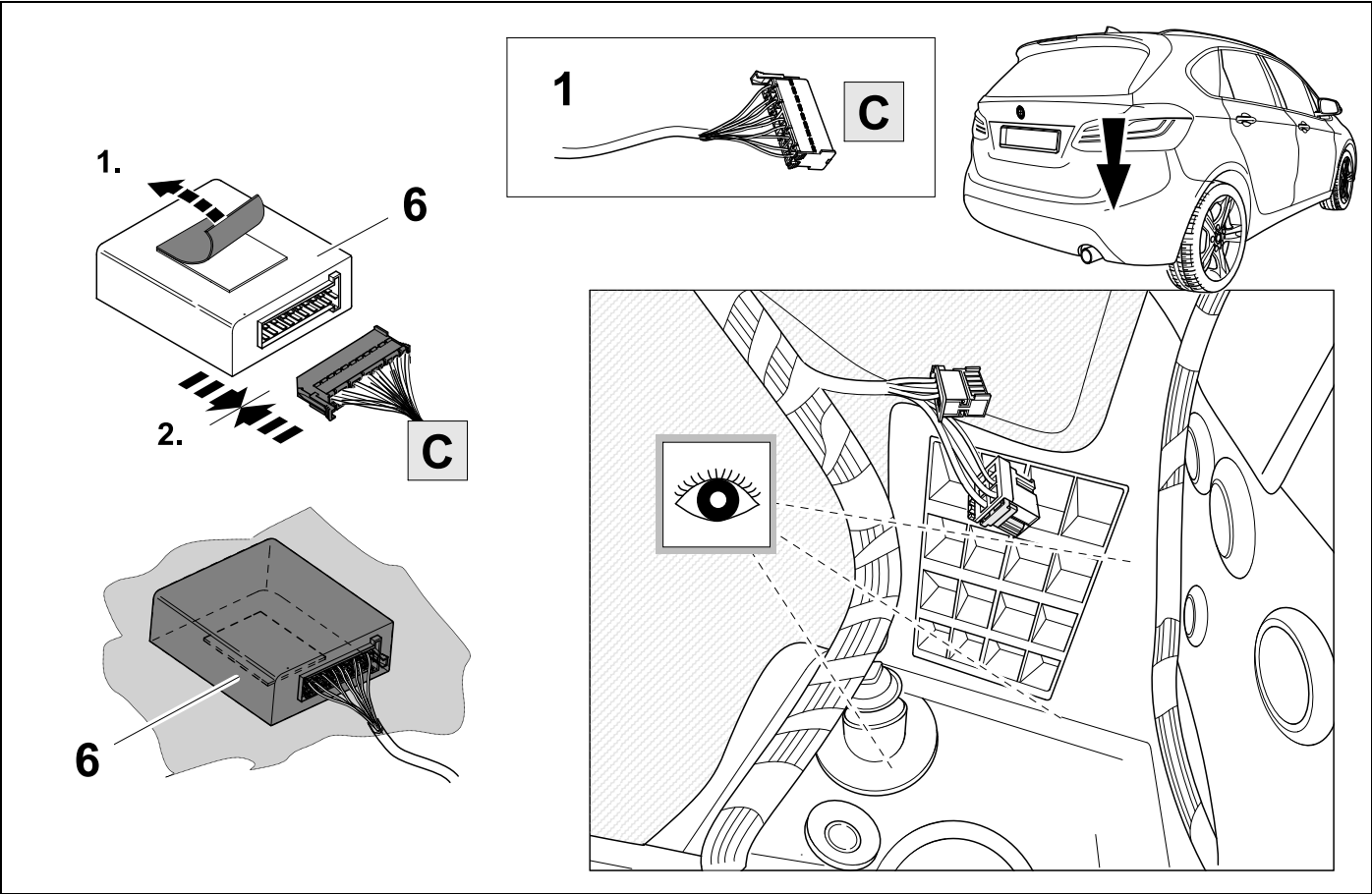


10

1	ye	
2	bk	
3	wh	
4	gn	
5	bu	
6	rd	
7	bn	

10	bk	wh	gy	gn	rd	bu	ye	bn	pu	or	no
	black	white	grey	green	red	blue	yellow	brown	purple	orange	not occupied

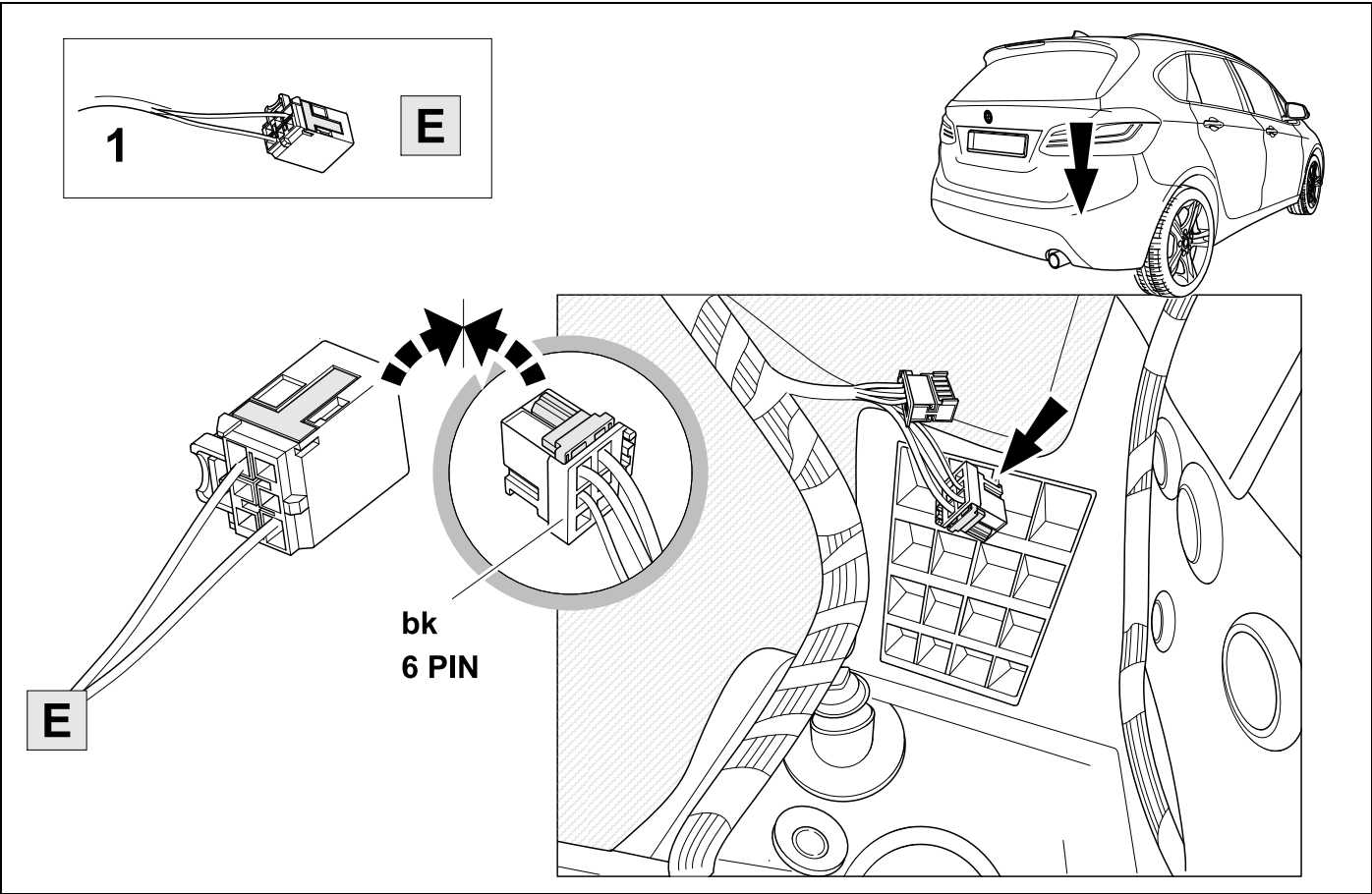
11



12



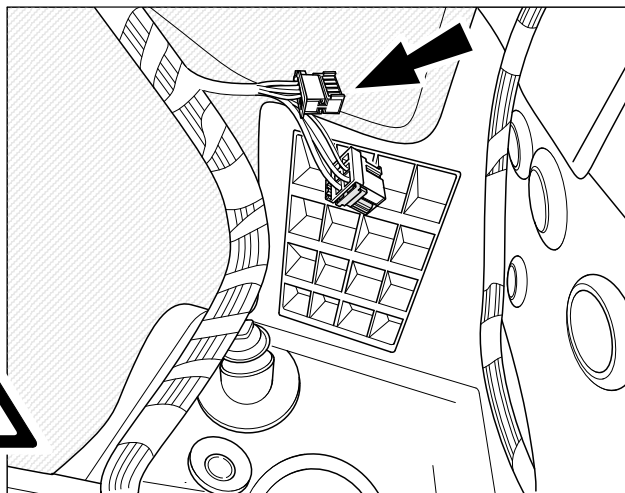
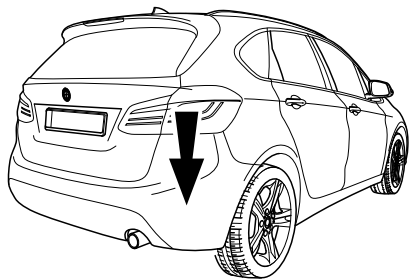
10



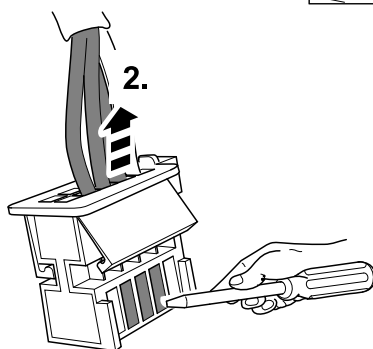
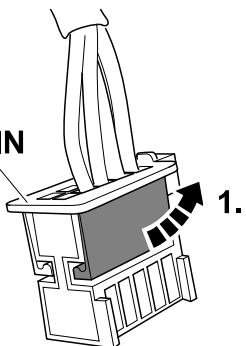
13



10



bk
10 PIN

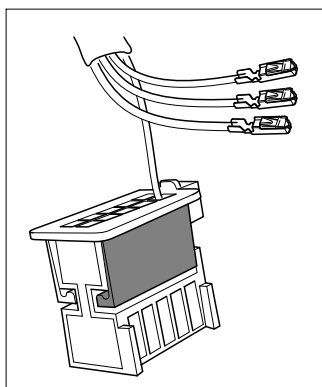


PIN 2	➔	bk-ye
PIN 3	➔	ye-rd
PIN 4	➔	ye-bn

14



10

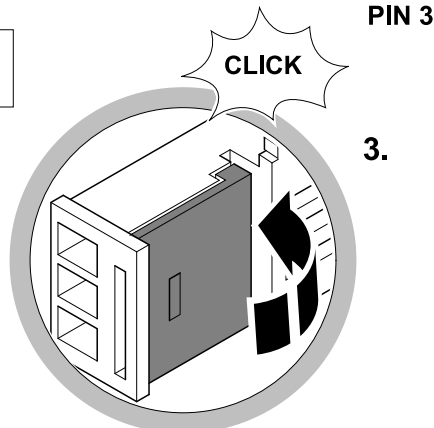
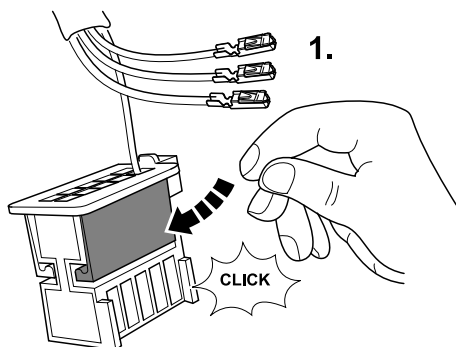
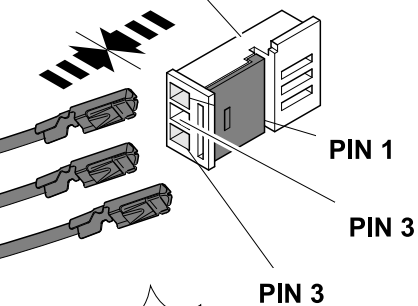


2. 10 (bk)

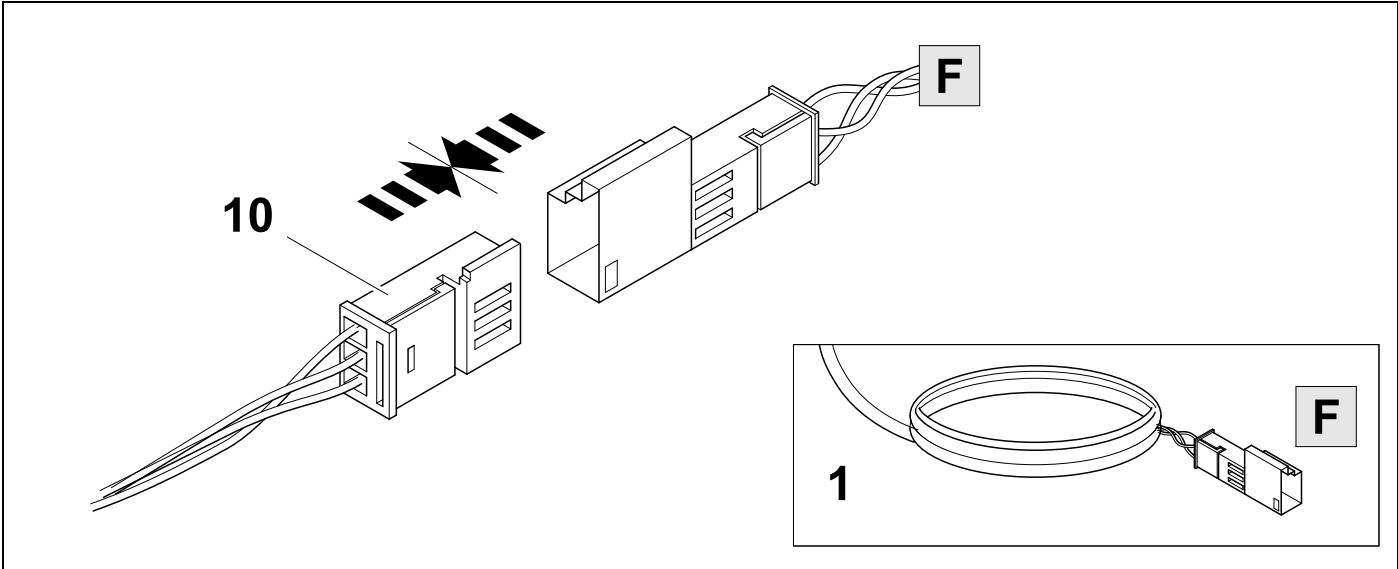
1 ye-rd

2 bk-ye

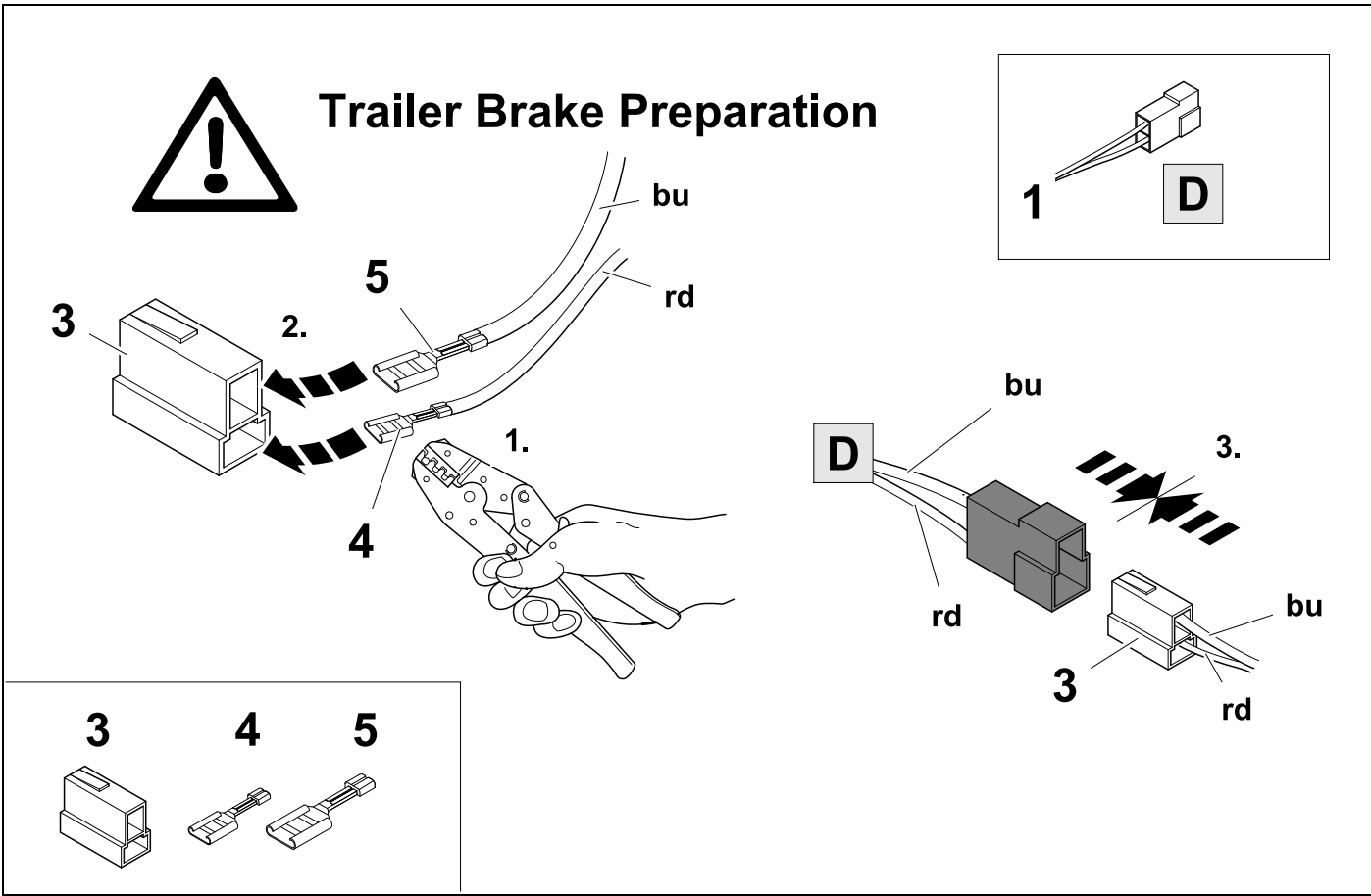
3 ye-bn



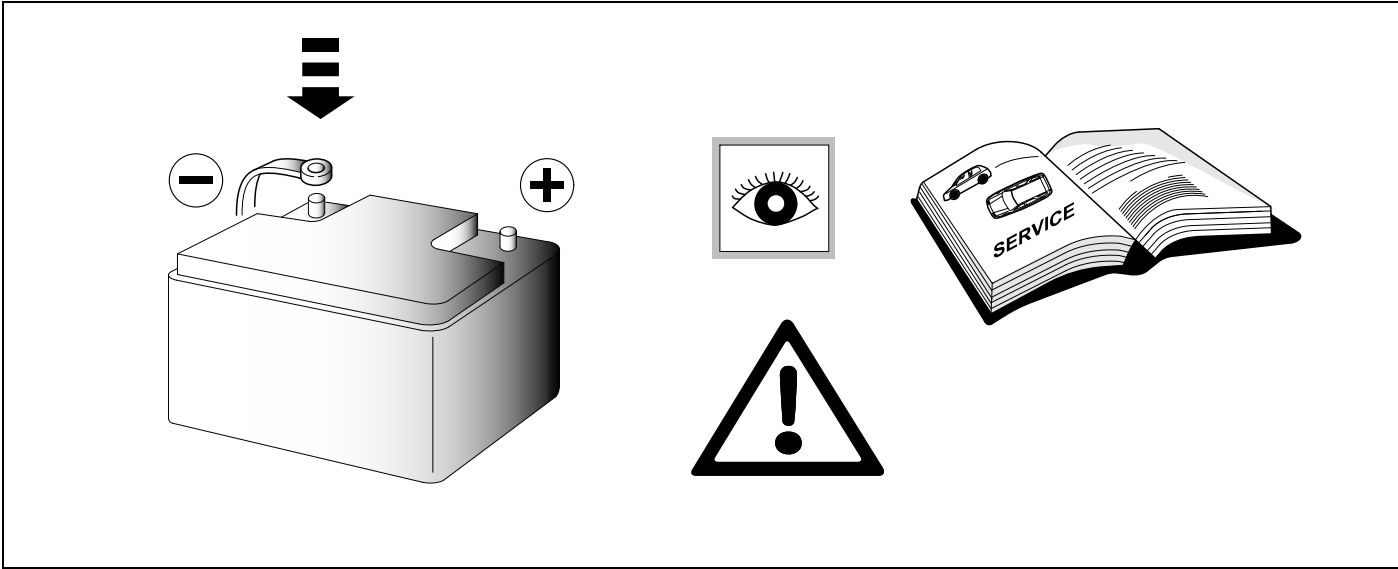
15



16 OPTIONAL  ⇒ 10

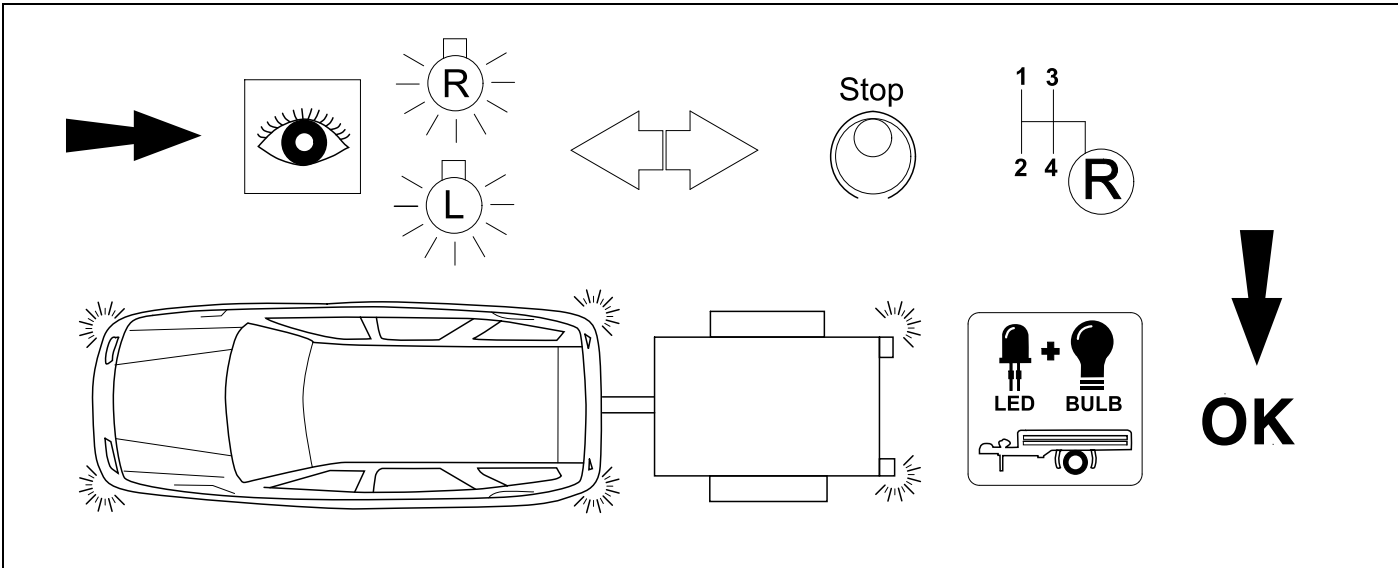


17



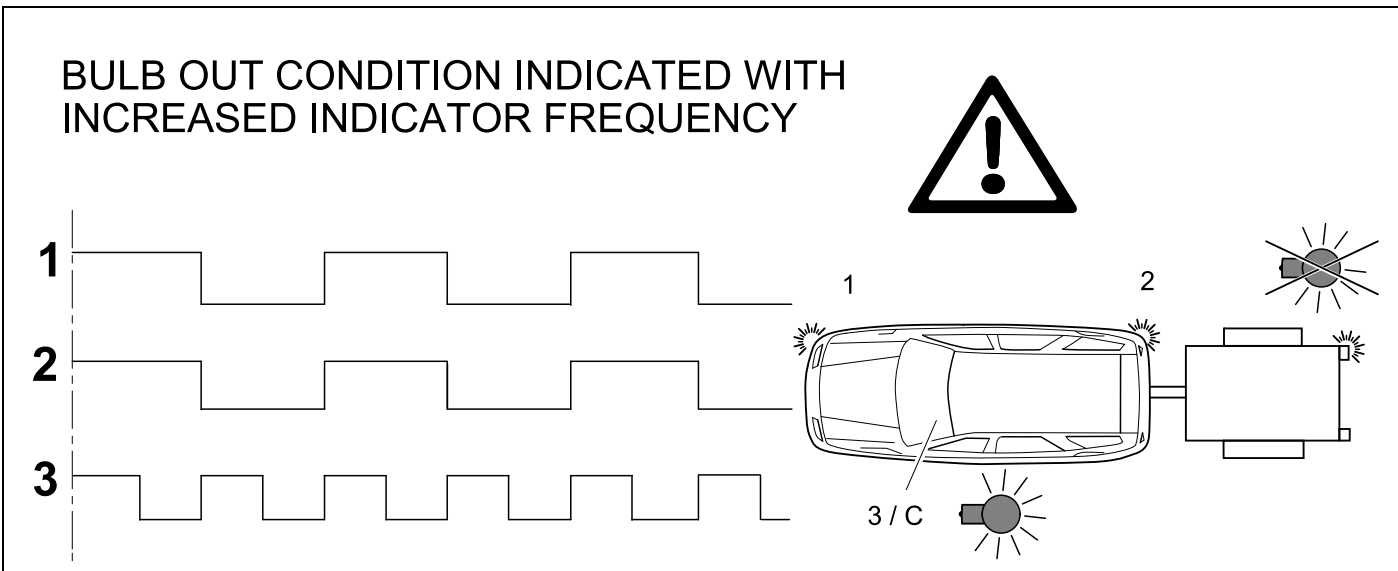
18

CHECK ALL LIGHTING FUNCTIONS



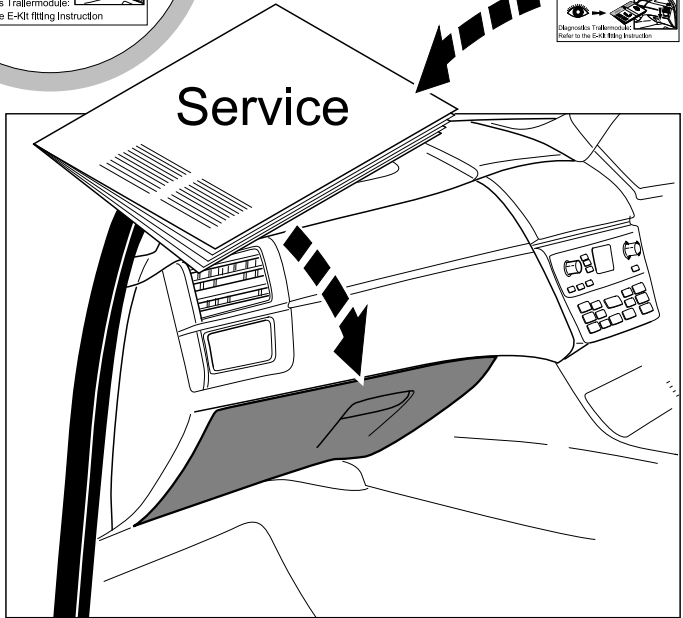
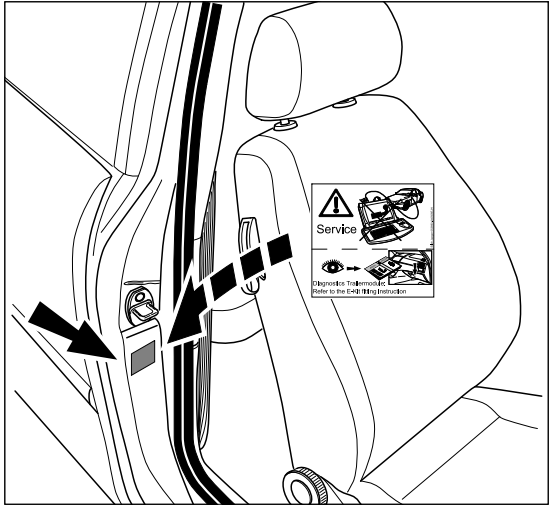
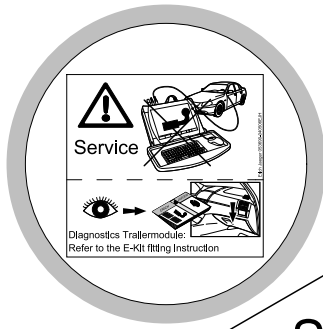
19

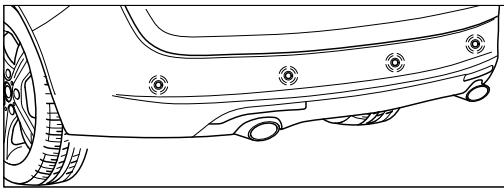
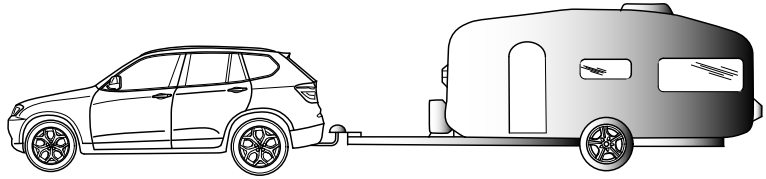
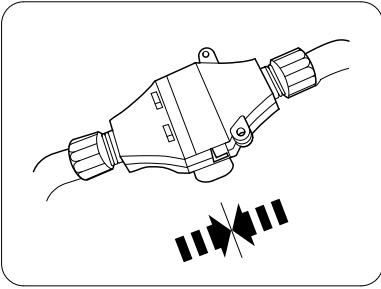
CHECK BULB OUT DETECTION



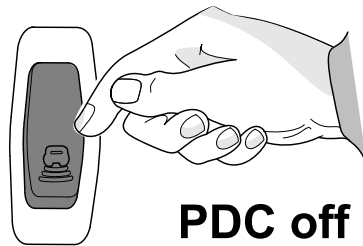
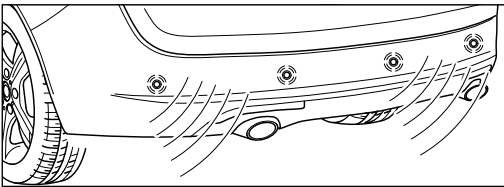


2x 7

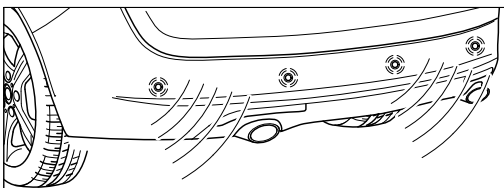




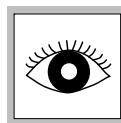
No Coding



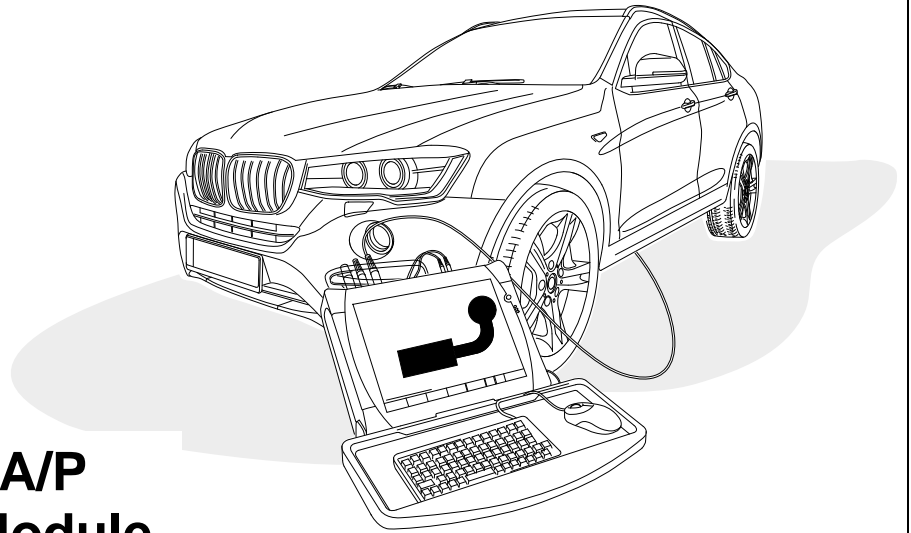
PDC off



**BMW Service ISTA/P
Initialize Trailer Module**



22



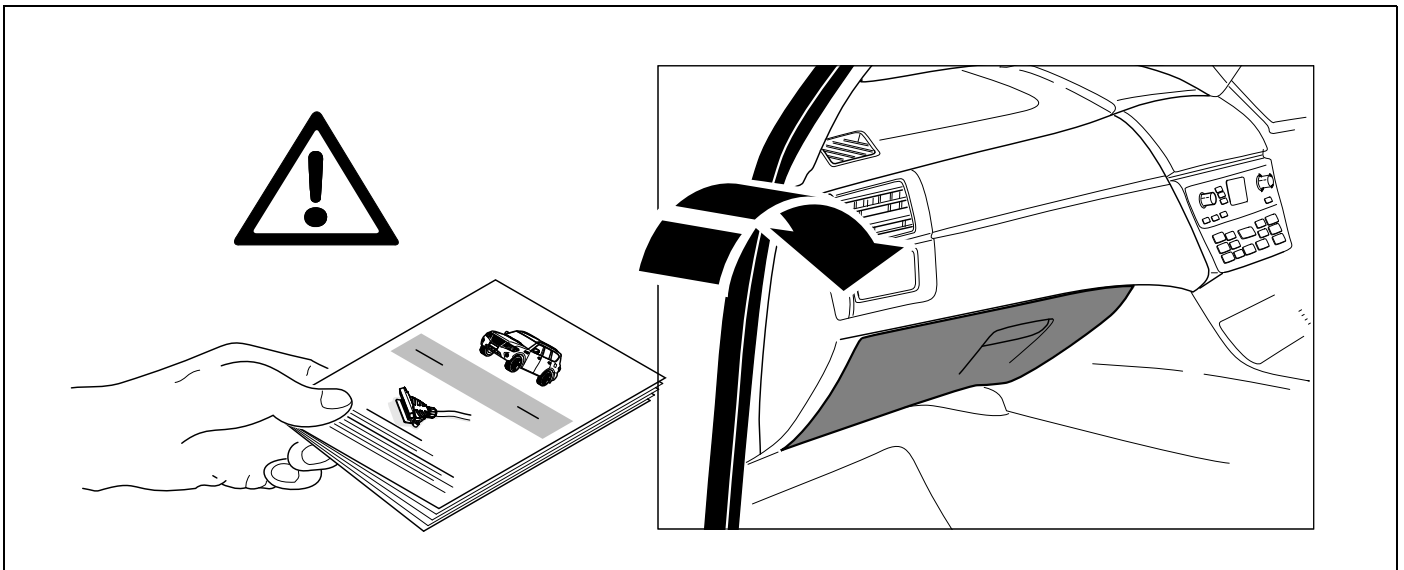
BMW Service ISTA/P Initialize Trailer Module

Please effect coding as follows:



- Connect computer to vehicle
- Start ISTA/P
- Click "Modification / Upgrades"
- Scan Action plan
- Click „Coding (Ethernet)“
- Scan Action program follow-up
- Final report checking

After the effected connection, the rear park assist system will also automatically be deactivated in trailer operation!



Subject to change in terms of construction, equipment and colour, and may contain errors.
The information and illustrations are non-binding.