



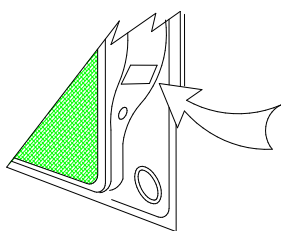
Towbar Fitting Instructions  
To Suit **FORD FOCUS SEDAN** 2009-on  
Part Number **FD201L**  
Rating **900/90** kg

**WARNING:**

1. Do not, drill, cut, weld or otherwise modify the tow bar.
2. If you are using electric welding on a motor vehicle, **always** check that the vehicle is not equipped with electronic engine or instrument management equipment. Failure to do so could **destroy** any onboard computers. If in doubt, check with the vehicle's manufacturer.

**General:**

1. Ensure all hardware items have been included refer to assembly diagram.
2. It is recommended that the instructions are read through and completely understood before making any attempt to fit this product.
3. Be wary of any changes to vehicle designs or other accessories that may conflict with the installation of this product.
4. Before drilling ensure that the area is clear of fuel, electrical & other components.
5. All holes drilled into the body panels shall have all burrs & swarf removed then coated with a suitable rust preventative paint.
6. For vehicles that require the bumper to be cut. Ensure cut out area is in correct position on the vehicle prior to cutting the bumper.
7. The high tensile fasteners supplied with this product were used to achieve the specified rating. If replacement is required ensure that fasteners of the same rating & quality are used. Contact an authorized **Trailboss** dealer if further information is required.
8. Ensure that all hardware is fastened to torque list below check fasteners on regular basis.
9. Tow bar load rating sticker provided with this product shall be conspicuously located on inside rear end of the driver's door. **(See diagram below).**
10. Trailboss recommends that you check your tow ball to ensure that it complies with the Australian standards **AS 4177.2**.
11. **PLEASE NOTE:** It is advised to remove your lug or tbn when not actually towing so as to produce a clear view of the vehicles registration plate if obscured, and to also provide maximum available departure angle



Place load rating sticker  
inside driver's door here

**FOR TOWING PURPOSES ONLY**

For towing capacity details please refer to vehicle owner's manual or to the manufacturer. Overloading can void your warranties.

**RECOMMENDED ASSEMBLY TORQUE LISTING**

Diameter	Grade 8.8 Bolt
M6	9.5 Nm
M8	21.7 Nm
M10	43.4 Nm
M12	77.3Nm
M14	146 Nm
M16	189.8 Nm

**Tow bar Maintenance and Care.**

Trailboss recommends that bolt torque's, as listed below, are routinely and regularly inspected and checked for correct tension. Replace any worn or defective parts.

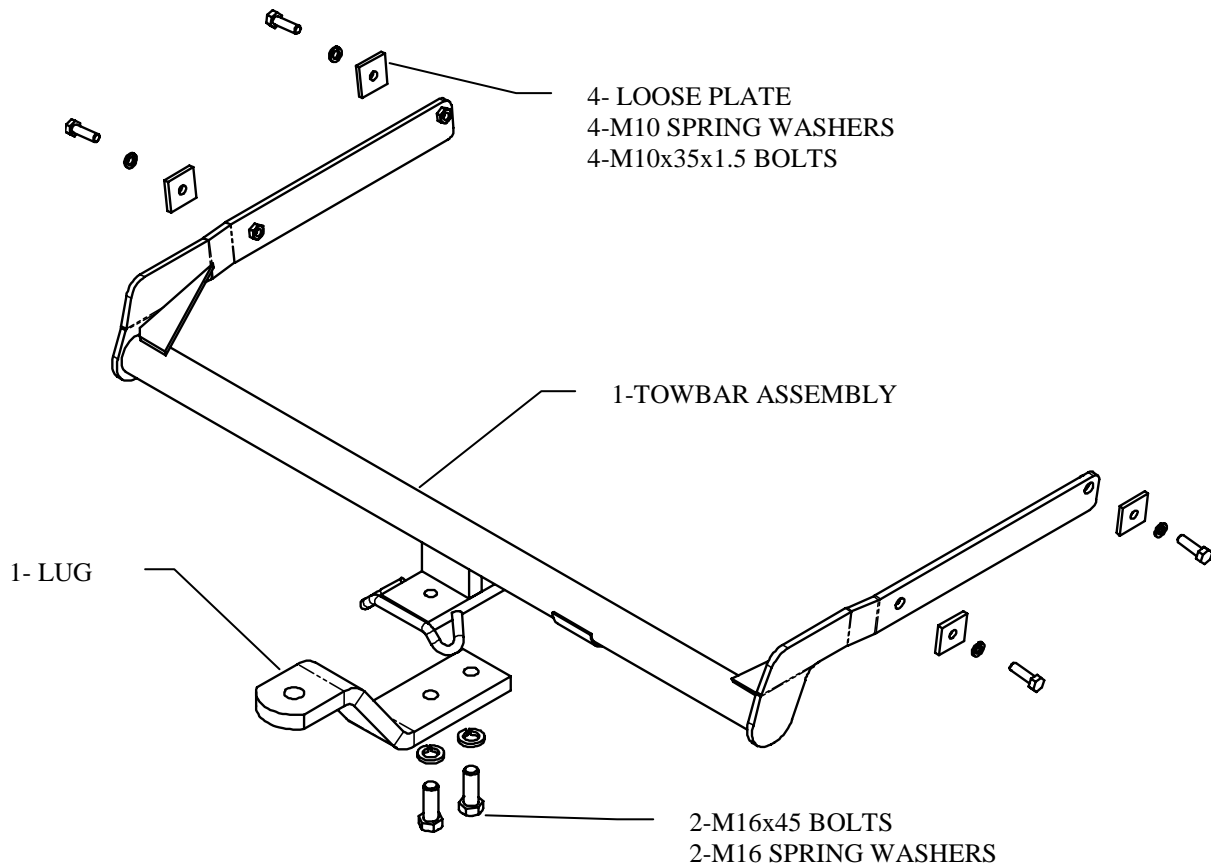
We recommended to remove Tow Ball Mounts (TBM's, tongues or lugs) when not being used for any considerable length of time.

So as to avoid injury, when not towing it is suggested that the tongue, Pull Pin and R-clip are removed then stored in a safe, clean and dry place, away from excessive moisture.

Hitch Pull Pins and spring "R" clips are regularly checked for proper installation. Replace any worn or defective parts.



Towbar Fitting Instructions  
To Suit **FORD FOCUS SEDAN** 2009-on  
Part Number **FD201L**  
Rating **900/90 kg**



- 1 Ensure all hardware items have been included
- 2 Remove rear bumper bar via
  - a) Remove 2 x screws from under boot lid.
  - b) Remove 2 x screw from rear lower lip of bumper.
  - c) Remove 2 x torx screws from inner guard of bumper at each wheel arch.
  - d) Remove 2 x nuts inside wheel arch.
  - e) Release bumper skin.
- 3 Remove & discard impact beam
- 4 Fit side arms up the chassis rails and align with holes (note due to body variations some material removal may be required if towbar is too tight).
- 5 Recoat any raw surfaces with suitable paint
- 6 Fit plates bolts & washers loosely as per the diagram above.
- 7 Tighten all bolts to torque listing.
- 8 Refit bumper in reverse of step 2



Wiring Loom Fitting Instructions  
To Suit Ford Focus 4D  
Part Number 100213-WL

## Wiring Loom Installation Instructions

Ford Focus 4D  
Part No: 100213-WL

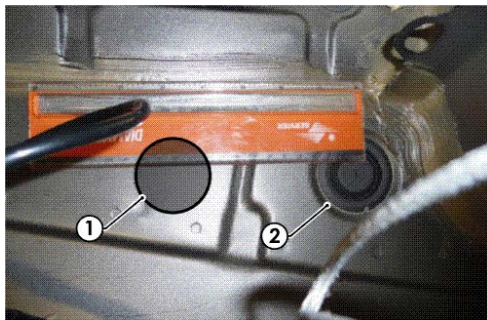
Tail Harness Length Required: 1200mm  
RPA Override Switch Part No: 04848 (If Fitted)

Wiring Loom Installation Time: Approx 20 Mins



**Wiring Loom Fitting Instructions  
To Suit Ford Focus 4D  
Part Number 100213-WL**

1. In the luggage compartment area, remove the rear LHS, RHS and rear centre trims and then draw back the LHS, side carpet.
2. Patch the trailer patch harness (P/No: 100213-WL) between the LHS tail lamp connectors and then route the harness along to the RHS.
3. Patch the trailer patch harness (P/No: 100213-WL) between the RHS tail lamp connectors.
4. Run the earth wire towards the LHS wheel arch area and secure the earth wire to the front of the luggage compartment and secure with the M8 nut.
5. In the area next to the wheel arch, use a step drill and drill out a Ø30mm hole (1) 120mm behind the existing grommet (2). File out any rough edges and spray with rust inhibitor.



6. Mount the Trailer Socket to the towbar using M4 Fasteners (not supplied).
7. Feed the Tail Harness into the vehicle and adjust the grommet into position ensuring the grommet makes a good seal. Secure the grommet by using a cable tie (not supplied).
8. Secure Tail Harness to the towbar using cable ties (not supplied).
9. Route the Tail Harness across the towbar towards the grommet hole.
10. From outside of the vehicle, route the tail harness (tail length 1200mm) into the vehicle through the drilled out grommet hole and then connect the tail harness to the trailer wiring.
11. Test the Trailer socket using a light board or multi-meter.
12. Secure the all harnesses using cables ties (not supplied).
13. Refit all removed parts and secure all fasteners.
14. Place instructions in glove box after fitment.