

TRAILBOSS

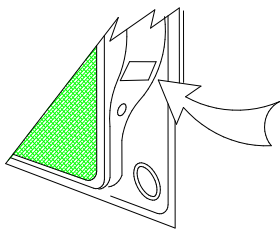
Tow bar Fitting Instructions To Suit Holden Rodeo & Colorado without rear bumper step 4x2 & 4x4 03-2003-on Part Number HD89L Rating 1250 kg MAX Static Ball Load 90 kg

WARNING:

1. Do not, drill, cut, weld or otherwise modify the tow bar.
2. If you are using electric welding on a motor vehicle, **always** check that the vehicle is not equipped with electronic engine or instrument management equipment. Failure to do so could **destroy** any onboard computers. If in doubt, check with the vehicle's manufacturer.

General:

1. Ensure all hardware items have been included refer to assembly diagram.
2. It is recommended that the instructions are read through and completely understood before making any attempt to fit this product.
3. Be wary of any changes to vehicle designs or other accessories that may conflict with the installation of this product.
4. Before drilling ensure that the area is clear of fuel, electrical & other components.
5. All holes drilled into the body panels shall have all burrs & swarf removed then coated with a suitable rust preventative paint.
6. The high tensile fasteners supplied with this product were used to achieve the specified rating. If replacement is required ensure that fasteners of the same rating & quality are used. Contact an authorized **Trailboss** dealer if further information is required.
7. Ensure that all hardware is fastened to torque list below check fasteners on regular basis.
8. Tow bar load rating sticker provided with this product shall be conspicuously located on inside rear end of the driver's door. **(See diagram below).**
9. Trailboss recommends that you check your tow ball to ensure that it complies with the Australian standards **AS 4177.2**.
10. **PLEASE NOTE:** It is advised to remove your lug or tbn when not actually towing so as to produce a clear view of the vehicles registration plate if obscured, and to also provide maximum available departure angle



Place load rating sticker
inside driver's door here

FOR TOWING PURPOSES ONLY
For towing capacity details please refer to vehicle owner's manual or to the manufacturer. Overloading can void your warranties.

RECOMMENDED ASSEMBLY TORQUE LISTING

| <u>Diameter</u> | <u>Grade 8.8 Bolt</u> |
|-----------------|-----------------------|
| M6 | 9.5 Nm |
| M8 | 21.7 Nm |
| M10 | 43.4 Nm |
| M12 | 77.3Nm |
| M14 | 146 Nm |
| M16 | 189.8 Nm |

Tow bar Maintenance and Care.

Trailboss recommends that bolt torque's, as listed below, are routinely and regularly inspected and checked for correct tension. Replace any worn or defective parts.

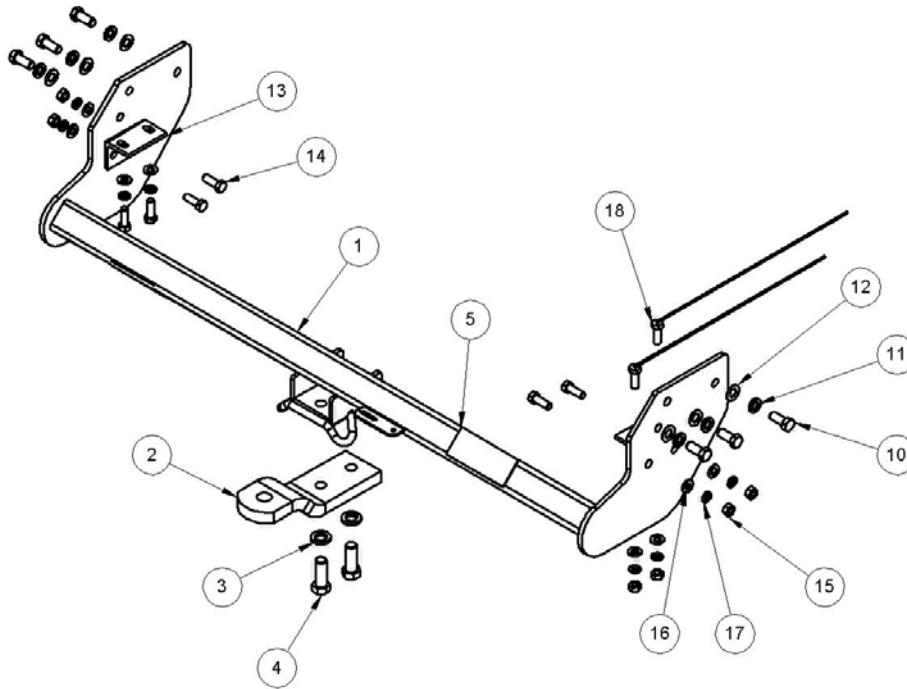
We recommended to remove Tow Ball Mounts (TBM's, tongues or lugs) when not being used for any considerable length of time.

So as to avoid injury, when not towing it is suggested that the tongue, Pull Pin and R-clip are removed then stored in a safe, clean and dry place, away from excessive moisture.

Hitch Pull Pins and spring "R" clips are regularly checked for proper installation. Replace any worn or defective parts.

TRAILBOSS

Tow bar Fitting Instructions
 To Suit Holden Rodeo & Colorado without rear bumper step 4x2 & 4x4 03-2003-on
 Part Number HD89L
 Rating 1250 kg MAX Static Ball Load 90 kg



NOTE: ITEMS 6, 7, 8 & 9 ARE NOT SHOWN

| LOCATION | PART NO. | QTY. | DESCRIPTION | ITEM NO. |
|-----------|-----------|------|--------------------------------|----------|
| ASSEMBLY | HD89-A1 | 1 | HOLDEN RODEO & COLORADO ASSY | 1 |
| ASSEMBLY | 7604 | 1 | ASSEMBLY LUG | 2 |
| ASSEMBLY | 92345 | 2 | M16 SPRING WASHER | 3 |
| ASSEMBLY | 92203B | 2 | M16 x 45 2.OP BOLT | 4 |
| ASSEMBLY | 96000 | 1 | TRAILBOSS STICKER | 5 |
| BOLT PACK | B0HD89 | 1 | ASSEMBLY BOLT PACK | 6 |
| BOLT PACK | 94062 | 1 | BOLT BAG | 7 |
| BOLT PACK | 2539-FI | 1 | FITTING INSTRUCTIONS | 8 |
| BOLT PACK | X1250-90A | 1 | DOOR RATING STICKER | 9 |
| BOLT PACK | 92103 | 6 | M12 x 30 1.25P BOLT | 10 |
| BOLT PACK | 92339 | 6 | M12 SPRING WASHER | 11 |
| BOLT PACK | 92338 | 6 | Wshr ft 1/2" x 1-1/8" x 16 z/p | 12 |
| BOLT PACK | A01198R-6 | 2 | ANGLE BR'KT 50 X 50 X 6 | 13 |
| BOLT PACK | 92045 | 6 | M10 x 30 1.25P BOLT | 14 |
| BOLT PACK | 92311 | 6 | NUT M10 x 1.25P | 15 |
| BOLT PACK | 92335 | 8 | Wshr ft 3/8 x 1 x 16 brt z/p | 16 |
| BOLT PACK | 92336 | 8 | M10 SPRING WASHER | 17 |
| BOLT PACK | A01725-4 | 2 | M10 X 30 X 1.25 & WIRE 400 | 18 |

Tow bar Fitting Instructions
To Suit Holden Rodeo & Colorado without rear bumper step 4x2 & 4x4 03-2003-on
Part Number HD89L
Rating 1250 kg MAX Static Ball Load 90 kg

11. Fitment of tow bar to vehicle via

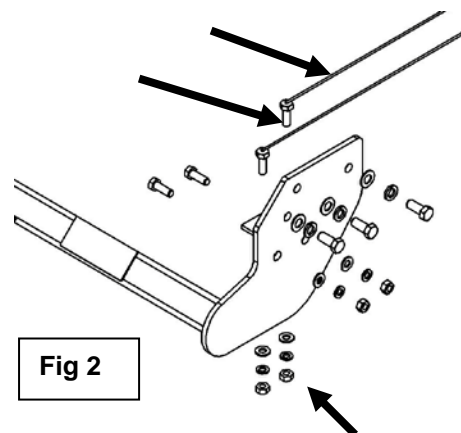
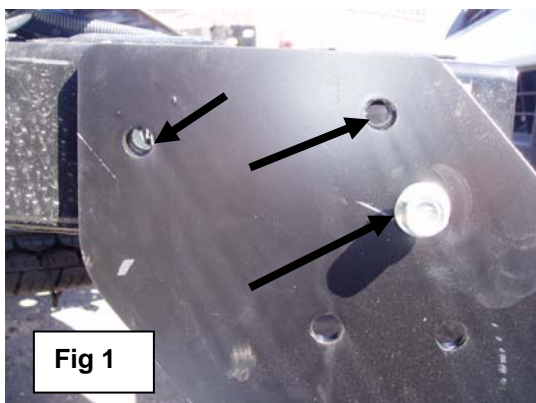
- a. Offer tow bar to vehicle chassis rails so that holes in the tow bar side arms align with captive nuts see fig 1.
- b. Loosely fit M12 x 30 bolts with flat & spring washers provided see assembly diagram for correct part orientation.
- c. Loosely fit angle brackets each side with remaining hardware see assembly diagram for correct part orientation.
- d. Pre 2006 Rodeo feed bolts on wire up the chassis rail on the driver's side so to drop down through rails.

12. Fitment of tow bar to vehicle via

- a. For 2006 & 2007 RA upgrade variants of the Holden Rodeo break the wires from the bolts retain the bolts & discard the wires & M10 nuts see fig 2.
- b. The 2006 & 2007 Rodeo have captive nuts on the underside of the drivers chassis rail, the previous models had the holes only.

13. Fitment of tow bar to vehicle via

- a. Fit lug part number 7604 to the tow bar with M16 x 45 bolts & washers supplied.
- b. Ensure that the fitting instructions are placed in the glove compartment of the vehicle.
- c. Fasten all hardware to the torque listing.
- d. Ensure that all wires are tucked away & not extending outside the chassis rails.





Wiring Loom Fitting Instructions
To Suit Holden Rodeo
Rodeo LT 4x4 Turbo Diesel
Rodeo LT 4x4 Turbo Diesel (2001 to 2007)
Rodeo 2WD & 4WD

Part Number 100055-WL

Wiring Loom Installation Instructions

Holden Rodeo
Part No: 100055-WL

Tail Harness Length Required: 1200mm
RPA Override Switch Part No: 04848 (If Fitted)

Wiring Loom Installation Time: Approx 20 Mins



Wiring Loom Fitting Instructions
To Suit Holden Rodeo
Rodeo LT 4x4 Turbo Diesel
Rodeo LT 4x4 Turbo Diesel (2001 to 2007)
Rodeo 2WD & 4WD

Part Number 100055-WL

1. Underneath the rear of the vehicle, locate and disconnect the LHS vehicle trailer break-out connector.
2. Secure the Tail Harness socket onto the towbar mounting bracket with fasteners.
3. Connect the Trailer Patch Harness (part no. 100055-WL) to the LHS break-out connector.
4. Route Tail Harness (length 1200mm) towards the Trailer Patch Harness and connect the Trailer Patch Harness to the Trailer tail Harness.
5. Secure the Trailer Patch Harness relays onto the interior vehicle sheet metal using tech screws. Secure the vehicle patch harness and Tail Harness connectors using cable ties (not supplied).
6. Test the Trailer socket using a light board or multi-meter.
7. Secure the all harnesses using cables ties (not supplied).
8. Refit all removed parts and secure all fasteners.
9. Place instructions in glove box after fitment.