

TRAILBOSS

Towbar Fitting Instructions To Suit **HONDA ACCORD 06-13 ON** Part Number **HN68L** Rating **1600/60** kg

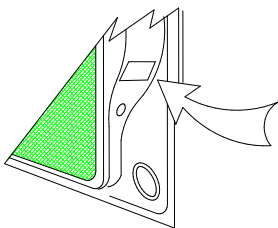
PLACE THESE INSTRUCTIONS IN THE VEHICLE'S GLOVEBOX AFTER INSTALLATION IS COMPLETED

WARNING:

1. Do not, drill, cut, weld or otherwise modify the tow bar.
2. If you are using electric welding on a motor vehicle, **always** check that the vehicle is not equipped with electronic engine or instrument management equipment. Failure to do so could **destroy** any onboard computers. If in doubt, check with the vehicle's manufacturer.
3. The high tensile fasteners supplied with this product were used to achieve the specified rating. If replacement is required ensure that fasteners of the same rating & quality are used. Contact an authorised **Trailboss** dealer if further information is required.
4. If TBM is used in inverted position tow ball may make contact with rear tailgate when lowered, which could cause damage.

General:

1. Ensure all hardware items have been included refer to assembly diagram.
2. It is recommended that the instructions are read through and completely understood before making any attempt to fit this product.
3. Be wary of any changes to vehicle designs or other accessories that may conflict with the installation of this product.
4. Before drilling ensure that the area is clear of fuel, electrical & other components.
5. All holes drilled into the body panels shall have all burrs & swarf removed then coated with a suitable rust preventative paint.
6. For vehicles that require the bumper to be cut. Ensure cut out area is in correct position on the vehicle prior to cutting the bumper.
7. The high tensile fasteners supplied with this product were used to achieve the specified rating. If replacement is required ensure that fasteners of the same rating & quality are used. Contact an authorized **Trailboss** dealer if further information is required.
8. Ensure that all hardware is fastened to torque list below check fasteners on regular basis.
9. Tow bar load rating sticker provided with this product shall be conspicuously located on inside rear end of the driver's door. **(See diagram below).**
10. Trailboss recommends that you check your tow ball to ensure that it complies with the Australian standards **AS 4177.2.**
11. **PLEASE NOTE:** It is advised to remove your lug or tbn when not actually towing so as to produce a clear view of the vehicles registration plate if obscured, and to also provide maximum available departure angle
12. Pull Pin must be fit in down position.



Place load rating sticker
inside driver's door here

FOR TRAILER TOWING PURPOSES ONLY
For towing capacity details please refer to vehicle owner's manual or to the manufacturer. Overloading can void your warranties.

RECOMMENDED ASSEMBLY TORQUE LISTING

<u>Diameter</u>	<u>Grade 8.8 Bolt</u>
M6	9.5 Nm
M8	21.7 Nm
M10	43.4 Nm
M12	77.3Nm
M14	146 Nm
M16	189.8 Nm

Tow bar Maintenance and Care.

Trailboss recommends that bolt torque's, as listed below, are routinely and regularly inspected and checked for correct tension. Replace any worn or defective parts.

We recommended to remove Tow Ball Mounts (TBM's, tongues or lugs) when not being used for any considerable length of time.

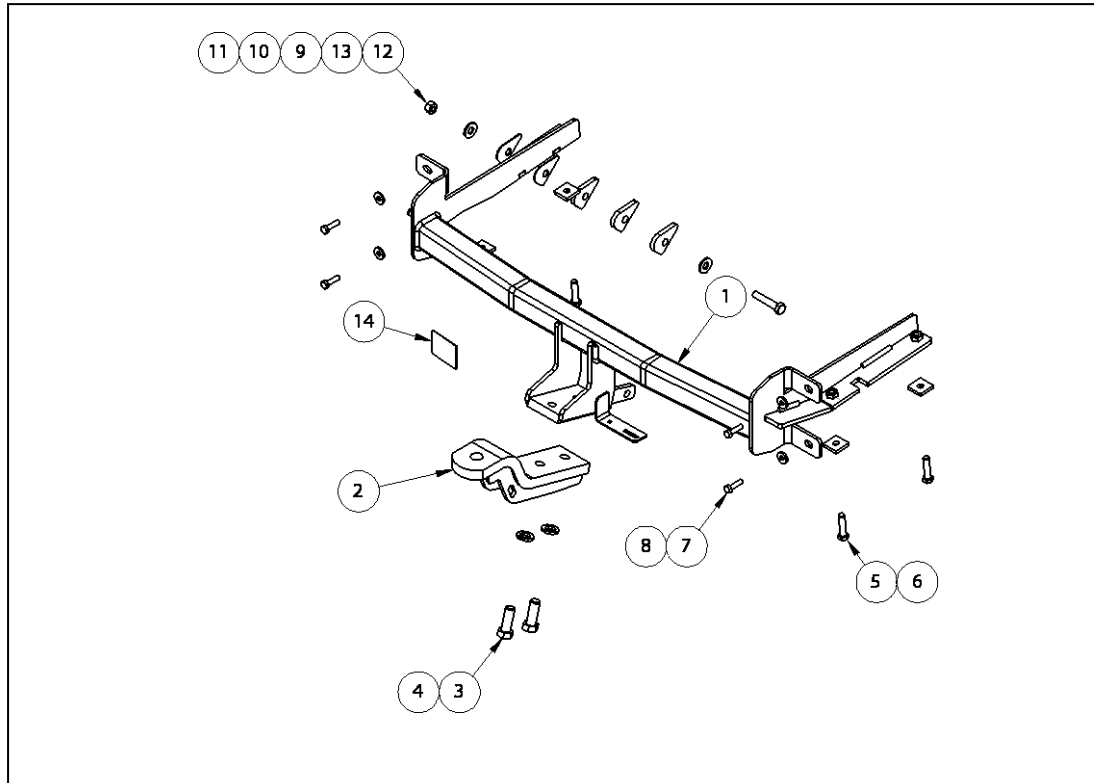
So as to avoid injury, when not towing it is suggested that the tongue, Pull Pin and R-clip are removed then stored in a safe, clean and dry place, away from excessive moisture.

Hitch Pull Pins and spring "R" clips are regularly checked for proper installation. Replace any worn or defective parts.

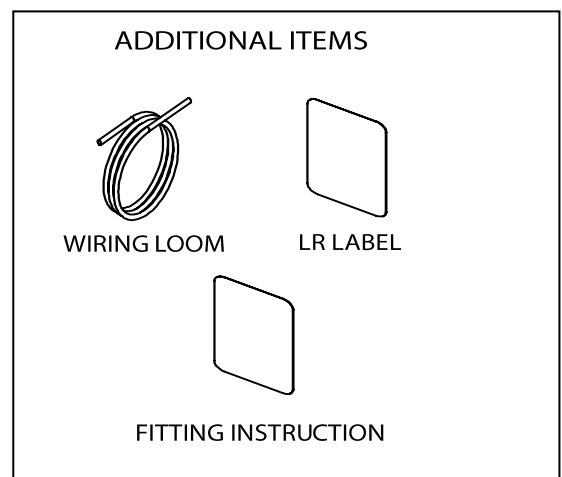
TRAILBOSS

Towbar Fitting Instructions
 To Suit **HONDA ACCORD 06-13 ON**
 Part Number **HN68L**
 Rating **1600/60 kg**

PLACE THESE INSTRUCTIONS IN THE VEHICLE'S GLOVEBOX AFTER INSTALLATION IS COMPLETED



QTY	DESCRIPTION	ITEM NO
1	WELDED ASSEMBLY	1
1	TONGUE ASSEMBLY	2
2	BOLT M16x45 2.0P	3
2	SPRING WASHER M16x5x3.5	4
4	LOOSE PLATE 32x32x6 11MM HOLE	5
4	BOLT HEX HD M10x45x1.5P	6
4	BOLT M8-1.25x30MM	7
4	FLAT WASHER M8x22x3.3MM	8
3	HOOK PLATE	9
2	SPACER TOW HOOK 2MM	10
1	BOLT M12x1.75x60	11
1	HEX NUT M12x1.75	12
2	WASHER FLAT M12	13
1	ACRYLIC COMPLIANCE PLATE	14





Towbar Fitting Instructions
To Suit **HONDA ACCORD 06-13 ON**
Part Number **HN68L**
Rating **1600/60 kg**

PLACE THESE INSTRUCTIONS IN THE VEHICLE'S GLOVEBOX AFTER INSTALLATION IS COMPLETED

INSTRUCTION:

1. Open Boot lid, and remove 2x Hex Screws inside lid cavity, each below rear tail light.
2. From inside rear wheel well cavity, remove 2x Screws. Repeat for opposite side of vehicle.
3. Remove 1x push Clip from underside of Bumper trim, near wheel well.
Repeat for opposite side of vehicle.
4. Remove 2x Push Clips from underside of Bumper trim.
5. Peel away Bumper trim and place in a safe place to the side.
Remove 6x Screws (3 each side) attaching Impact Beam to vehicle chassis and remove Impact Beam. Discard after removal.
6. Lower rear Exhaust from hanger, then remove heat shield from Chassis by removing 4x bolts securing shield to main vehicle body.
7. Using a hacksaw or similar tool, cut away at outer face tray to gain access to inner Chassis Rail. Cut holes to a size that is suitable for Towbar side-arms. Clear area of all burrs and sharp edges.
8. If required, open up holes in the underside of Chassis Rail, using a drill or similar tool, to allow bolt alignment for Towbar side-arms.
9. Make a cut in the Lower Bumper Trim 160mm long from rearwards edge of trim between centre ribs of Lower Bumper Trim, in order to accommodate the Towbar droppers.
10. Mount Towbar to vehicle, inserting Towbar side-arms into newly created chassis holes.

Loosely secure Towbar to rear vehicle panel, then loosely secure Towbar Side-arms to Chassis Rail using bolts and spacers supplied.

Using packing plates and M12 bolt provided, secure Towbar to rear towing hook.

Fully tighten all bolts to recommended torques, refer to Page 1.
11. Make a cut on Main Bumper Facia 100mm wide and approx 90 mm long, starting from the bottom of the Bumper trim, in order to accommodate the Towbar droppers.

Reassemble Bumper following Steps 1 to 6 in reverse.



Wiring Loom Fitting Instructions
To Suit Honda Accord MY13
Part Number 100978-WL

Wiring Loom Installation Instructions

**Honda Accord MY13
Part No: 100978-WL**

**Tail Harness Length Required: 1200mm
ECU Required: 04826**

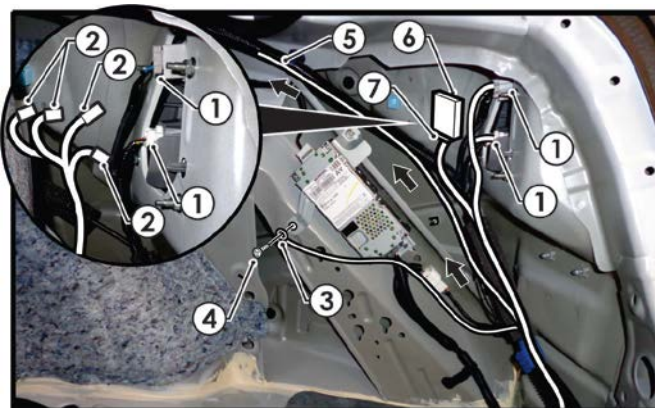
Wiring Loom Installation Time: Approx 30 Mins

Wiring Loom Fitting Instructions To Suit Honda Accord MY13 Part Number 100978-WL

1. In the luggage compartment, remove the two clips and then remove the floor carpet cover.
2. In the LHS of the luggage compartment area, remove the four clips and remove the latch by rotating 90 degrees.
3. Remove the LHS tool tray clip and remove the tool tray, then carefully pry open the luggage compartment trim.

Repeat steps 2-3 for the RHS.

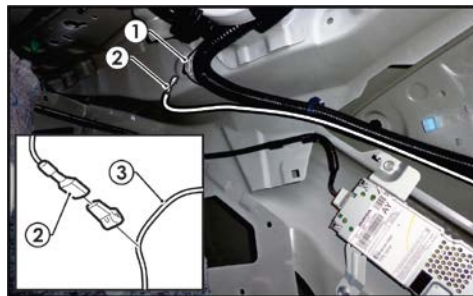
4. Disconnect the vehicle harness LHS 3-way tail light connector.
5. Patch the trailer patch (P/No:100978-WL) LHS 3-way connectors in between the tail light and connector and then route trailer patch along the back of the vehicle, towards the RHS.
6. Route the trailer patch towards the existing Ø30mm grommet hole.
7. Disconnect the vehicle harness RHS tail light connectors (1).
8. Patch the trailer patch RHS 3-way and 4-way connectors (2) in between the tail light and connector (1).
9. Secure the ground ring terminal (3) to the vehicle ECU bracket using the existing lower fastener (4).
10. Route the trailer patch reverse wire (5) towards the wheel arch area.
11. Secure the ECU (P/No: 04826) (6) to the mounting point and then connect the trailer patch connector (7) to the ECU (6).



Wiring Loom Fitting Instructions To Suit Honda Accord MY13 Part Number 100978-WL

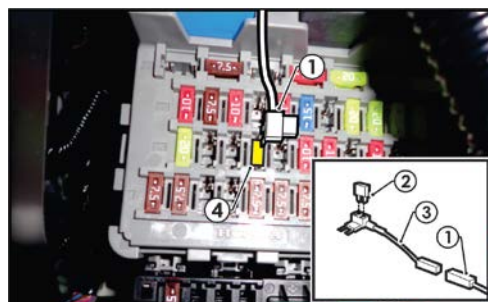
12. Inside the luggage compartment at the RHS wheel arch, expose the vehicle harness wires (1) and scotch lock the trailer patch Black/White wire (2) to the vehicle harness Orange reverse wire (3).

Caution: Several orange wires are present. Use a multi metre first to identify the correct wire.



Function	Trailer Patch	Vehicle Connector
REVERSE	BLACK/WHITE	ORANGE

13. Remove the rear passenger seat cushion by removing the two clips and one bolt.
14. Remove the rear passenger RHS pillar trim.
15. Remove the RHS rear passenger door sill trim and the 'B' pillar trim.
16. Remove the driver's kick panel trim by removing the kick panel fastener.
17. Route the trailer patch 1-way connector (1) from the rear of the vehicle, all the way to the fuse panel area following the existing vehicle harness.
18. Connect the supplied 20AMP fuse (2) into the supplied Add-a-Fuse harness (3) upper slot as shown.
19. Connect the trailer patch 1-way connector (1) to the add-a-fuse harness (3).
20. Connect the Add-a-Fuse harness into the fuse panel vacant fuse location (4) in the orientation shown.





Wiring Loom Fitting Instructions
To Suit Honda Accord MY13
Part Number 100978-WL

21. Mount the tail harness (tail length 1200mm) to the vehicle towbar mounting bracket using M4 fasteners (not supplied).
22. Route the tail harness towards the RHS vehicle grommet.
23. Inside the luggage compartment area, retrieve the tail harness connector and connect it to the trailer patch mating connector.
24. Test the trailer patch function using a light board or multi meter.
25. Secure all harnesses using cable ties (not supplied).
26. Re-fit all removed parts and secure all fasteners, ensuring there are no squeaks or rattles.
27. Place the fitting instructions in the glove box after fitment.