

# TRAILBOSS

## Towbar Fitting Instructions To Suit HYUNDAI SANTA FE 05-2006-ON Part Number HY22 Rating 1200Kg

### **WARNING:**

1. Do not, drill, cut, weld or otherwise modify the towbar.
2. If you are using electric welding on a motor vehicle, **always** check that the vehicle is not equipped with electronic engine or instrument management equipment. Failure to do so could **destroy** any onboard computers. If in doubt, check with the vehicle's manufacturer.



**CAUTION TWO PEOPLE ARE REQUIRED TO FIT THIS PRODUCT**

- 1 Ensure all hardware items have been included.
- 2 Remove the bumper bar skin via.
  - a. Removing the 5 Philips head screws on the LH & RH wheel arch.
  - b. Remove 6 trim buttons from either side of the bumper which hold the mud flaps.
  - c. Remove 4 screws from the lower bumper.
  - d. Remove fog light from bumper and disconnect globe.
  - e. Remove 2 trim buttons from inside bumper.
  - f. Remove 2 Phillips head screws (1 per side) just below tail lights near boot opening.
- 3 Unplug rear fog lamp wiring from the main vehicle loom located on the passenger side of the rear impact beam.
- 4 Remove the impact beam and discard. Care should be taken to separate the wiring loom from the impact beam and retain.
- 5 Lower the driver and passenger side exhausts off the two rearmost muffler hangers and remove the heat shields.
- 6 Remove the towing hook from the chassis rail and discard. Note: The same bolts used for fastening up the towing hook need to be used for fastening up the side arm of the towbar.
- 7 Manoeuvre towbar to the chassis sub frame so that the holes in the side arms of the tow bar align with the captive nuts and holes in the chassis rails as shown in figure 1.
- 8 Fasten all hardware loosely as per diagram below then tighten all hardware to torque listing.
- 9 Reconnect the fog lamp wiring loom by laying the loom on top of the towbar and securing with the 4 cable ties provided as shown in figure 2.
- 10 Using a sharp knife, trim heat shield from the rearmost corner as shown in figure 5 and discard.
- 11 Trim the bumper as shown in the figure 5.
- 12 Refit bumper in reverse of steps 2 & 3.
- 13 Bumper tags are provided and should be secured to the bumper as shown in figure 3.

### *RECOMMENDED ASSEMBLY TORQUE LISTING*

#### **Diameter Grade 8.8 Bolt**

	<b>Nm</b>
M6	9.5
M8	21.7
M10	43.4
M12	77.3
M16	189.8

**FOR TOWING PURPOSES ONLY**  
For towing capacity details please refer to vehicle owner's manual or to the manufacturer. Overloading can void your warranties.

# TRAILBOSS

## Towbar Fitting Instructions To Suit HYUNDAI SANTA FE 05-2006-ON Part Number HY22 Rating 1200Kg

Fig 1: Shows chassis plate being fitted on.

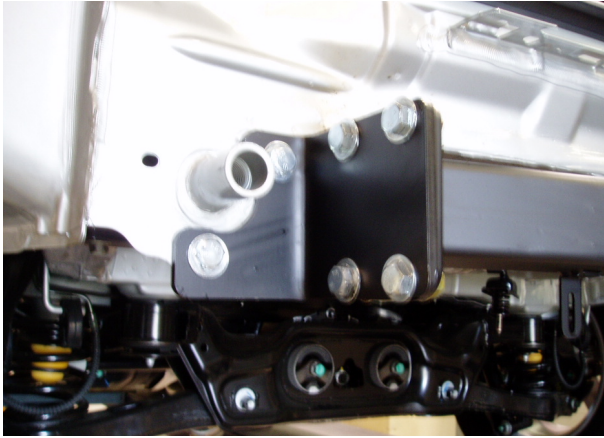


Fig 2: Shows fog lamp wiring being secured using cable ties.

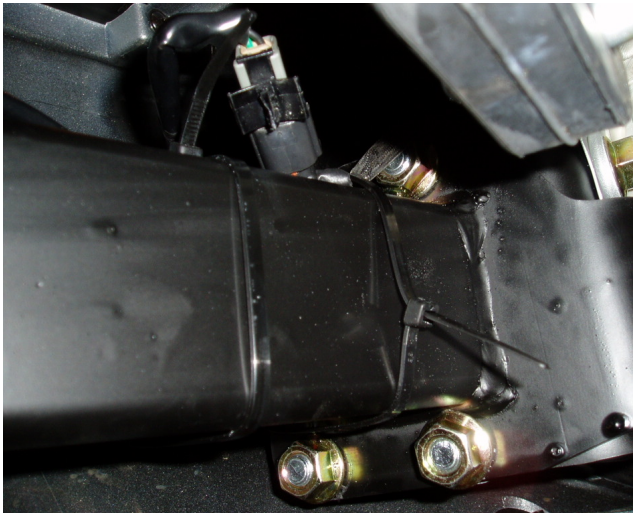
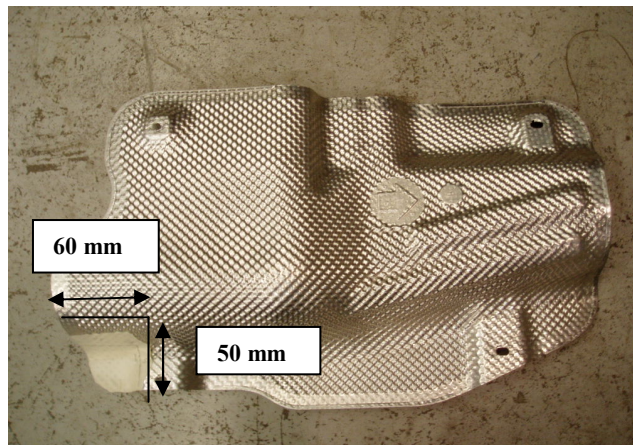


Fig 3: Shows bumper tags being put on.



Fig 4: Shows the heat shields to be trimmed.



# TRAILBOSS

## Towbar Fitting Instructions To Suit HYUNDAI SANTA FE 05-2006-ON Part Number HY22 Rating 1200Kg

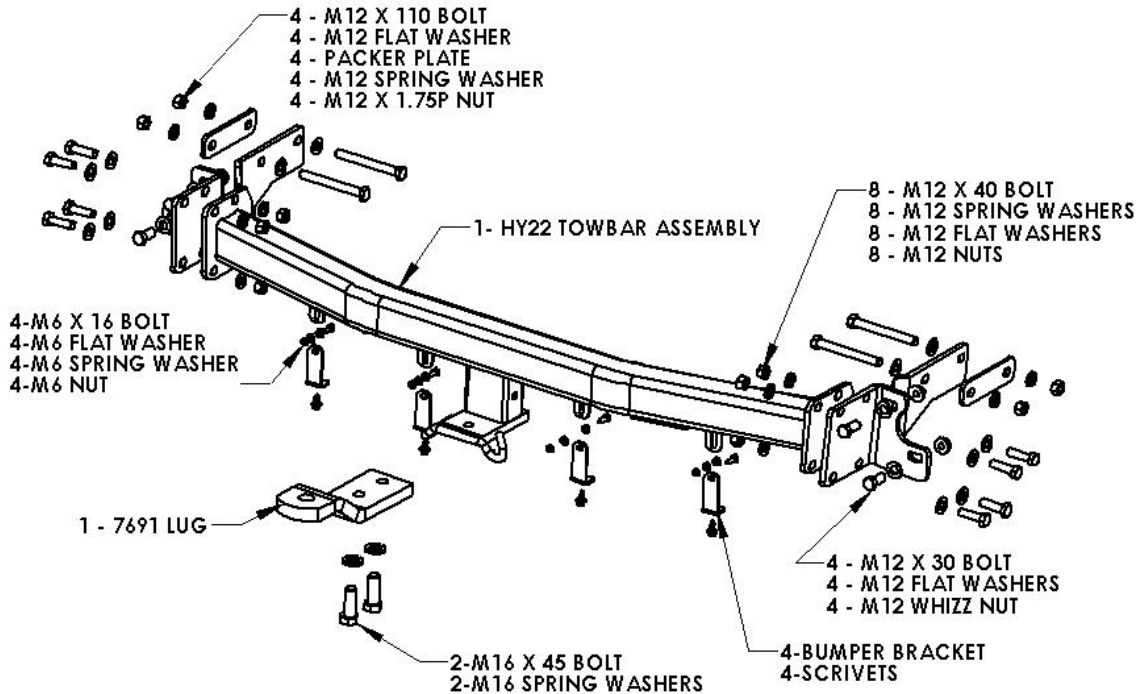
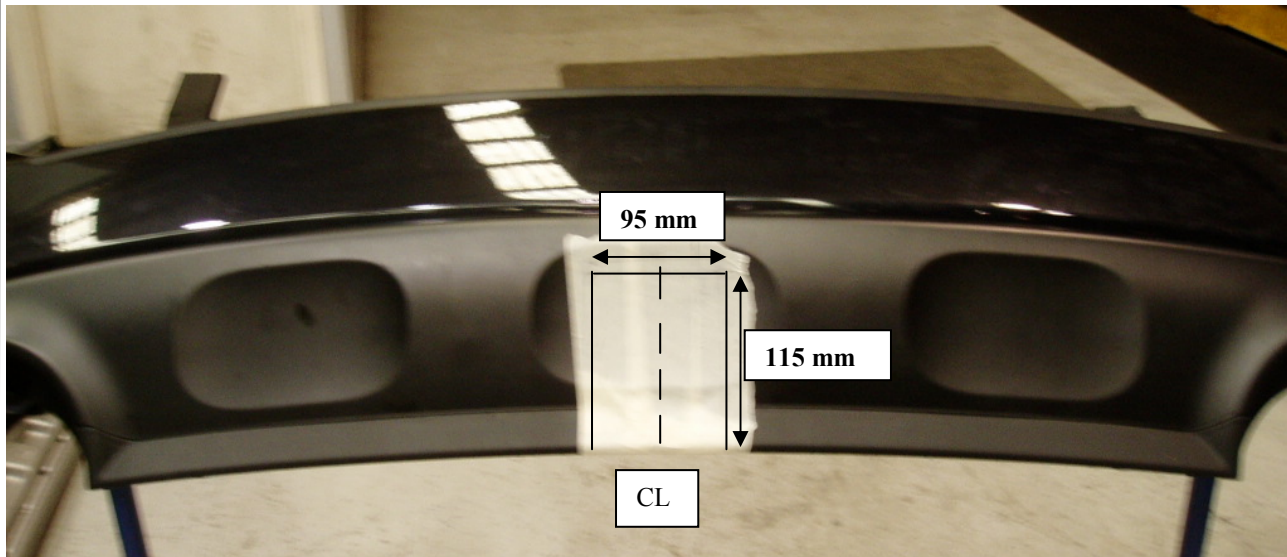


Fig 5: Bumper cut-out shown.



**PLEASE NOTE:** It is advised to remove lug from receiver box when not actually towing so as to produce a clear view of the vehicles registration plate if obscured, and to also provide increased departure angle.