

TRAILBOSS

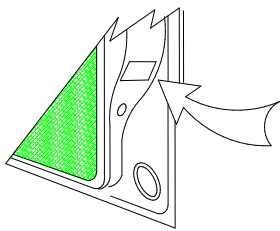
Tow bar Fitting Instructions To Suit Hyundai Elantra 4 DR Sedan 10-06-on & Hyundai I 30 5DR Hatch 10-07-on Part Number HY23 Rating 1200 kg Max Static Ball Load 75 Kg

WARNING:

1. Do not, drill, cut, weld or otherwise modify the tow bar.
2. If you are using electric welding on a motor vehicle, **always** check that the vehicle is not equipped with electronic engine or instrument management equipment. Failure to do so could **destroy** any onboard computers. If in doubt, check with the vehicle's manufacturer.

General:

1. Ensure all hardware items have been included refer to assembly diagram.
2. It is recommended that the instructions are read through and completely understood before making any attempt to fit this product.
3. Be wary of any changes to vehicle designs or other accessories that may conflict with the installation of this product.
4. Before drilling ensure that the area is clear of fuel, electrical & other components.
5. All holes drilled into the body panels shall have all burrs & swarf removed then coated with a suitable rust preventative paint.
6. The high tensile fasteners supplied with this product were used to achieve the specified rating. If replacement is required ensure that fasteners of the same rating & quality are used. Contact an authorized **Trailboss** dealer if further information is required.
7. Ensure that all hardware is fastened to torque list below check fasteners on regular basis.
8. Tow bar load rating sticker provided with this product shall be conspicuously located on inside rear end of the driver's door. **(See diagram below).**
9. Trailboss recommends that you check your tow ball to ensure that it complies with the Australian standards **AS 4177.2**.
10. **PLEASE NOTE:** It is advised to remove your lug or tbn when not actually towing so as to produce a clear view of the vehicles registration plate if obscured, and to also provide maximum available departure angle



Place load rating sticker
inside driver's door here

FOR TOWING PURPOSES ONLY

For towing capacity details please refer to vehicle owner's manual or to the manufacturer. Overloading can void your warranties.

RECOMMENDED ASSEMBLY TORQUE LISTING

<u>Diameter</u>	<u>Grade 8.8 Bolt</u>
M6	9.5 Nm
M8	21.7 Nm
M10	43.4 Nm
M12	77.3 Nm
M16	189.8 Nm

Tow bar Maintenance and Care.

Trailboss recommends that bolt torque's, as listed below, are routinely and regularly inspected and checked for correct tension. Replace any worn or defective parts.

We recommended to remove Tow Ball Mounts (TBM's, tongues or lugs) when not being used for any considerable length of time.

So as to avoid injury, when not towing it is suggested that the tongue, Pull Pin and R-clip are removed then stored in a safe, clean and dry place, away from excessive moisture.

Hitch Pull Pins and spring "R" clips are regularly checked for proper installation. Replace any worn or defective parts.

TRAILBOSS

Tow bar Fitting Instructions

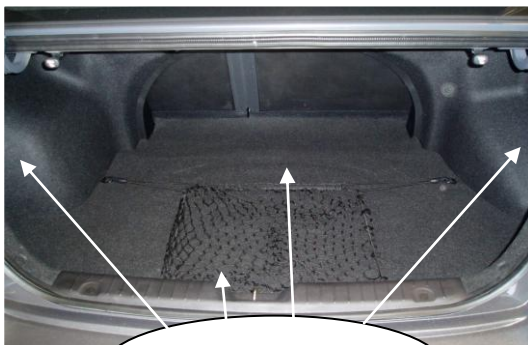
To Suit Hyundai Elantra 4 DR Sedan 10-06-on & Hyundai I 30 5DR Hatch 10-07-on
Part Number HY23

Rating 1200 kg Max Static Ball Load 75 Kg

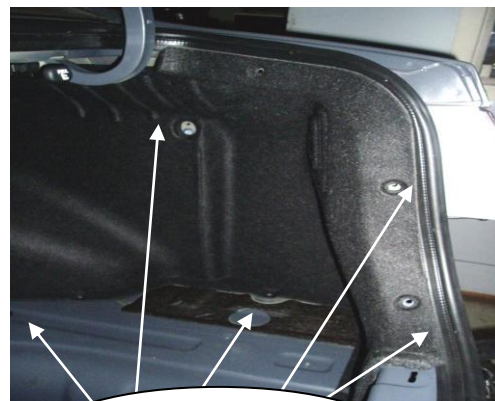
- 1 **Remove the Rear bumper of the vehicle by following the steps described below this section page 2 through to page 4 is for the Hyundai Elantra model only.**
 - a) Open boot. Remove the carpet, bolt & board from the vehicle boot, in-order to access retention points from inside of boot. Remove the retention points from the inside of the boot on both the LHS & RHS side. Refer to figures 1 & 2.
 - b) Remove the tail lights on both sides by removing the bolts as shown in figure 3, this is in-order to access the bolts holding up the bumper.
 - c) Remove bolts located on the underside of rear bumper & inside the rear wheel arch on both driver and passenger sides as shown in figure 4.
 - d) Remove the three bumper tags that hold up the bumper as shown in figure 4 and discard centre tag.
 - e) Gently pull outwards on the bumper to dislodge it from the vehicle.
- 2 Maneuver the main tow bar to the vehicle. The main tow bar assembly mounts to the outer side of the chassis shown on both the driver & passenger sides.
- 3 Tighten the tail brackets to the tow hook as shown in figure 6.
- 4 Trim the bumper as shown in figure 7.
- 5 Fasten all hardware loosely as per diagram below then tighten all hardware to torque listing.
- 6 Refit bumper in reverse of steps 2.

FIG 1: Shows all panels to be removed.

FIG 2: Shows retention points on side panel.



Remove all the panels shown



Remove retention points shown.

Fig 3; Shows retention points to remove tail lights

Fig 4: Shows bolts to be removed from under rear arch and underside of bumper on both sides.



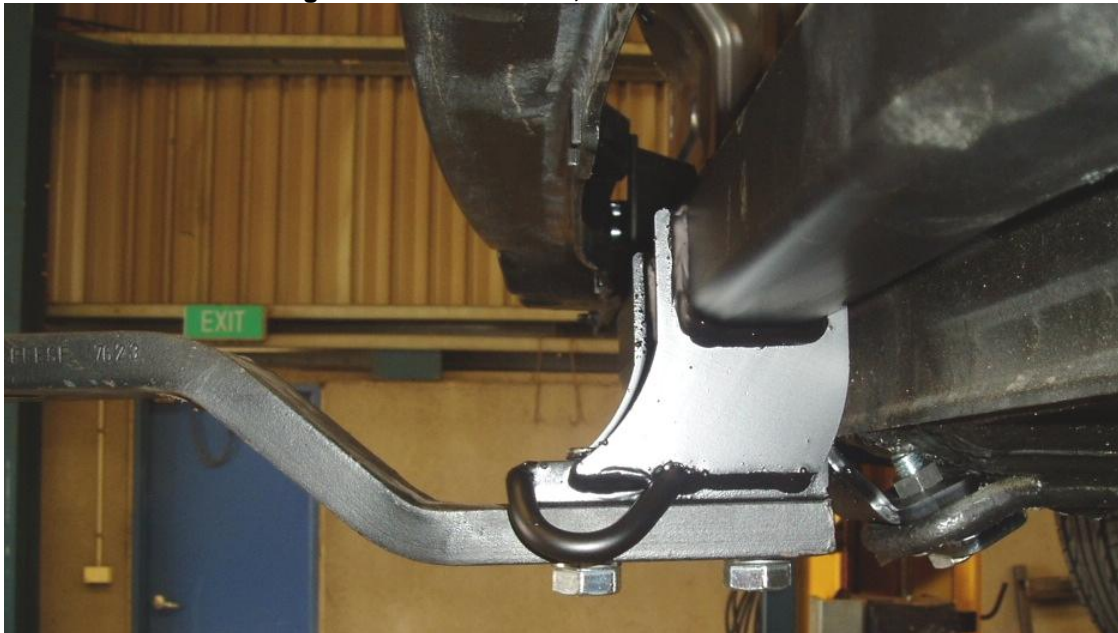
TRAILBOSS

Tow bar Fitting Instructions
To Suit Hyundai Elantra 4 DR Sedan 10-06-on & Hyundai I 30 5DR Hatch 10-07-on
Part Number HY23
Rating 1200 kg Max Static Ball Load 75 Kg

FIG 5: Shows the three bumper tags to be removed.



FIG 6: Shows tow bar being mounted on the car, with tail brackets bolted on to the tow hook.

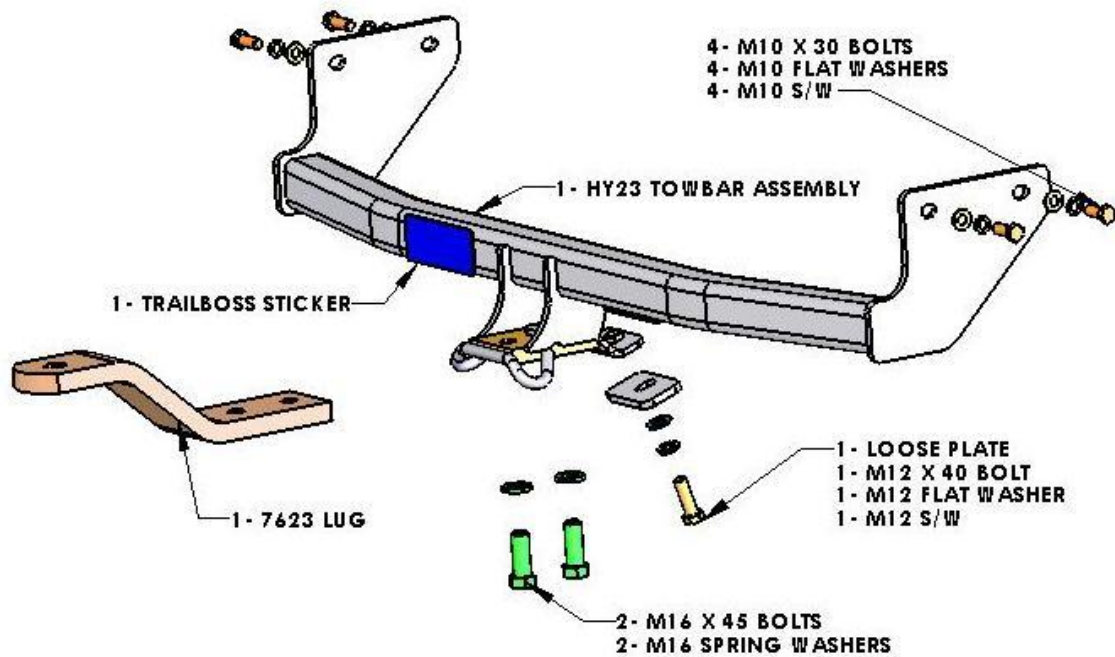
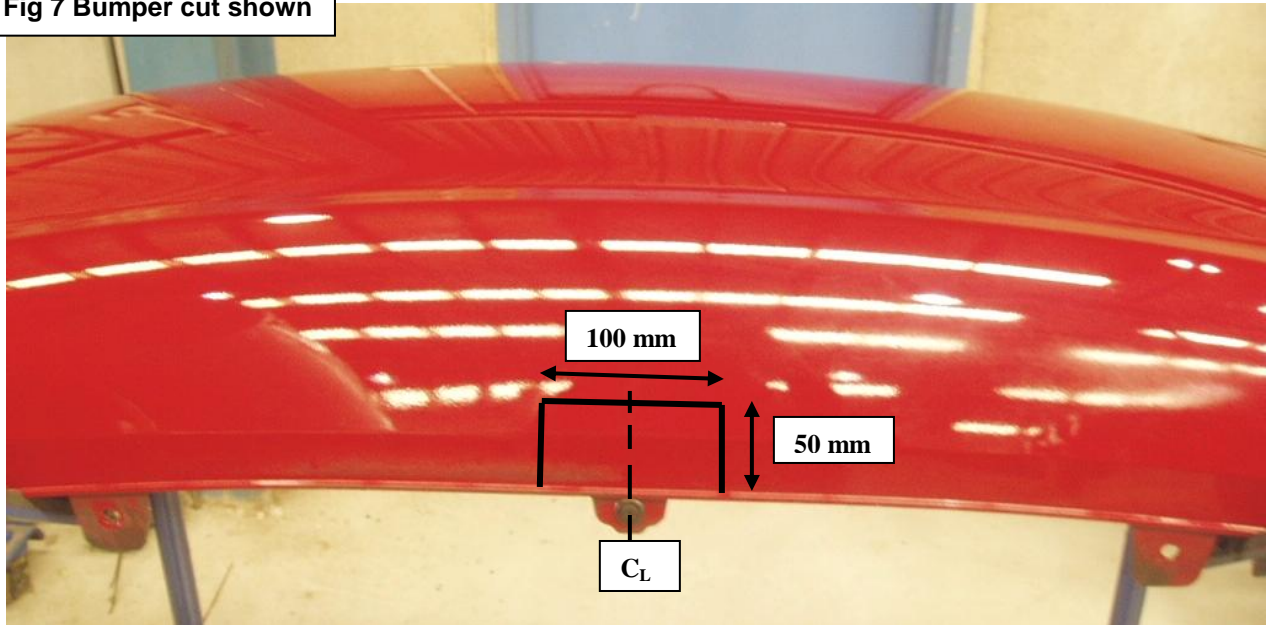


PLEASE NOTE: It is advised to remove lug from receiver box when not actually towing so as to produce a clear view of the vehicles registration plate if obscured, and to also provide increased departure angle.

TRAILBOSS

Tow bar Fitting Instructions
To Suit Hyundai Elantra 4 DR Sedan 10-06-on & Hyundai I 30 5DR Hatch 10-07-on
Part Number HY23
Rating 1200 kg Max Static Ball Load 75 Kg

Fig 7 Bumper cut shown



Tow bar Fitting Instructions

To Suit Hyundai Elantra 4 DR Sedan 10-06-on & Hyundai I 30 5DR Hatch 10-07-on
Part Number HY23

Rating 1200 kg Max Static Ball Load 75 Kg

11. This section page 5 through to page 7 is for the Hyundai I 30 model only remove rear bumper bar skin via
- Open plastic covers then remove 3 x screws from taillight assemblies and 1 screw with large bumper stop see fig1.
 - Pull taillight assembly away from the vehicle some force may be required then unplug loom and store in a safe location see fig 2.
 - Remove 2 x screws from taillight cavity & 2 x plastic scrivets see fig 3.

Screw with large bumper stop.



Open up plastic covers then remove screws.

Fig 1



Pull grommet out to expose loom connection then unplug.

Fig 2



Remove 2 x plastic trim buttons each side of vehicle.

Remove screw from each side of the vehicle

Fig 3

12. Remove rear bumper bar skin via

- Remove 3 x screws from inside each wheel arch two as shown fig 4 & one screw in the vertical plane at the top of bumper bar skin each side of the vehicle.
- Remove plastic cover from underside of vehicle as shown in fig 5 via removing four plastic scrivets from bottom edge of bumper then discard.
- Remove two nuts retaining plastic shield & 4 scrivets in the upper cavity of each side of plastic shield the remove plastic shield.
- Remove one bolt & one scrivets from underside of wheel arch each side see fig 6.
- Remove bolts retaining impact beam see fig 7 then unplug number plate light see fig 8.
- Remove scrivets from underneath the plastic shield retaining bumper bar.



Remove 2 x screws from each wheel arch & 1 screw in the vertical plane at top of wheel arch.

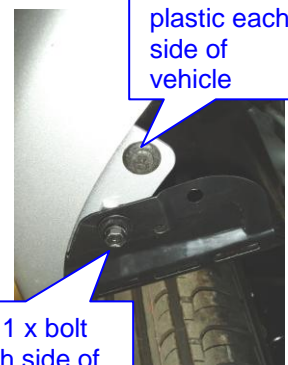
Fig 4



Plastic shield on the underside of the vehicle

Remove 4 x plastic scrivets from underside of bumper bar skin.

Fig 5

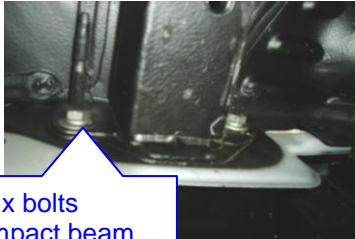


Remove 1 x plastic each side of vehicle

Remove 1 x bolt from each side of the vehicle.

Fig 6

Tow bar Fitting Instructions
 To Suit Hyundai Elantra 4 DR Sedan 10-06-on & Hyundai I 30 5DR Hatch 10-07-on
 Part Number HY23
 Rating 1200 kg Max Static Ball Load 75 Kg



Remove 2 x bolts retaining impact beam each side of the vehicle.

Fig 7



Unplug rear number plate light loom.

Fig 8

13. Remove rear bumper bar skin via

- a. Flex bumper bar skin out at the sides then pull rearward some force may be required **caution** two person lift required.
- b. Place bumper bar on suitable stands so that impact beam can be removed from bumper bar skin.
- c. Remove 3 x plastic scrivets from bumper stays see fig 9.
- d. Disengage number plate globes from recess in two places see fig 10.
- e. Remove the three bumper stays from impact beam via three screws see fig 11.
- f. Discard the centre stay then cut section in two places of impact beam see fig 12.



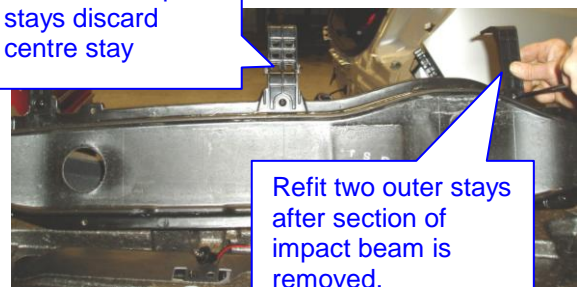
Remove plastic scrivets in 3 places.

Fig 9



Disengage number plate globes

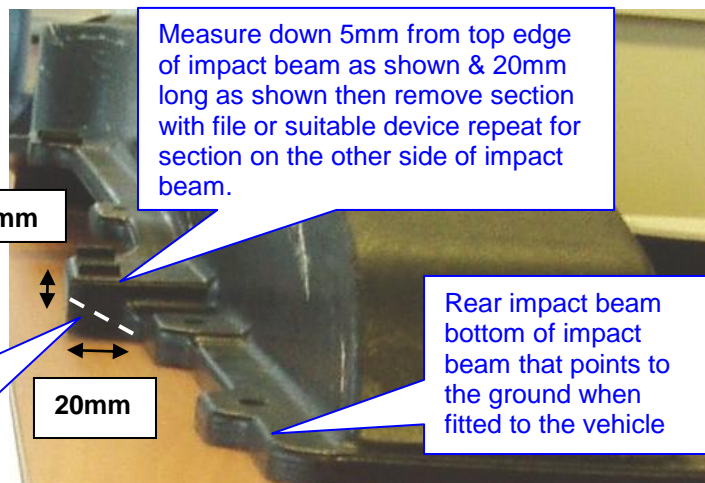
Fig 10



Remove bumper stays discard centre stay

Refit two outer stays after section of impact beam is removed.

Fig 11



Measure down 5mm from top edge of impact beam as shown & 20mm long as shown then remove section with file or suitable device repeat for section on the other side of impact beam.

5mm

20mm

Section to be removed in 2 places either side of the beam.

Rear impact beam bottom of impact beam that points to the ground when fitted to the vehicle

Fig 12

Tow bar Fitting Instructions To Suit Hyundai Elantra 4 DR Sedan 10-06-on & Hyundai I 30 5DR Hatch 10-07-on Part Number HY23

Rating 1200 kg Max Static Ball Load 75 Kg

14. Cut section of bumper bar skin

- Place masking tape over area of bumper bar to be cut before marking.
- Mark out as shown then cut with small saw or similar device see fig 13.
- Ensure that all burrs & swarf are removed from bumper bar cut.

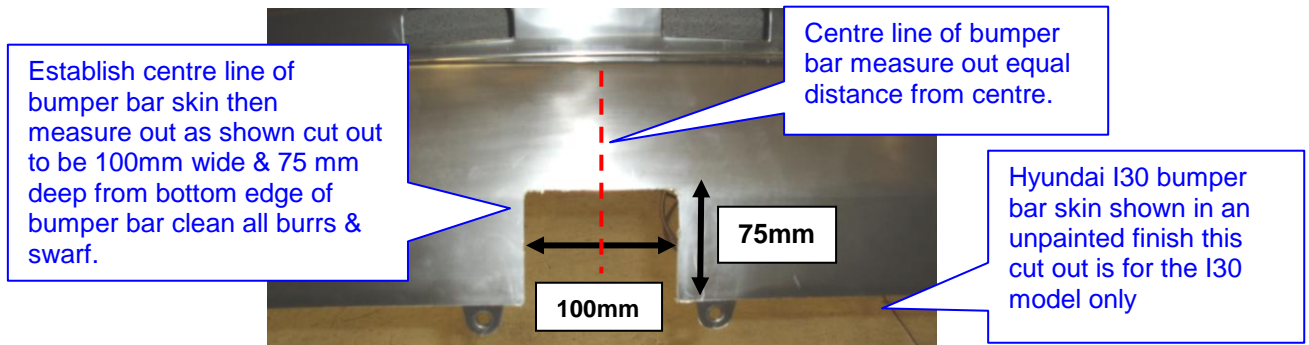


Fig 13

15. Fitment of tow bar to the vehicle

- Offer tow bar to the vehicle so that holes in the side plates align with existing holes on the side of the chassis rails each side of the vehicle.
- Fit all hardware as per the assembly diagram loosely then fasten to torque listing.
- Note:** That shipping hook mount is not used for the I30 model discard the fasteners that are supplied with the product see assembly detail for correct part orientation.
- Refit the bumper bar in the reverse of steps 13e through to 11a.
- Fit tow bar tongue part number 7623 to tow bars with 2 x M16 x 45 bolts & spring washers then fastens to torque listing.

