

TRAILBOSS

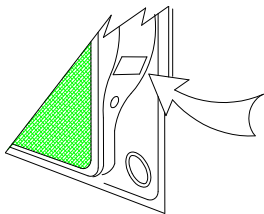
Towbar Fitting Instructions To Suit KIA CERATO SLi SEDAN / HATCH '10/2010 On Part Number KM17L Rating 1200/75 kg

WARNING:

1. Do not, drill, cut, weld or otherwise modify the tow bar.
2. If you are using electric welding on a motor vehicle, **always** check that the vehicle is not equipped with electronic engine or instrument management equipment. Failure to do so could **destroy** any onboard computers. If in doubt, check with the vehicle's manufacturer.
3. The high tensile fasteners supplied with this product were used to achieve the specified rating. If replacement is required ensure that fasteners of the same rating & quality are used. Contact an authorised **Trailboss** dealer if further information is required.

General:

1. Ensure all hardware items have been included refer to assembly diagram.
2. It is recommended that the instructions are read through and completely understood before making any attempt to fit this product.
3. Be wary of any changes to vehicle designs or other accessories that may conflict with the installation of this product.
4. Before drilling ensure that the area is clear of fuel, electrical & other components.
5. All holes drilled into the body panels shall have all burrs & swarf removed then coated with a suitable rust preventative paint.
6. For vehicles that require the bumper to be cut. Ensure cut out area is in correct position on the vehicle prior to cutting the bumper.
7. The high tensile fasteners supplied with this product were used to achieve the specified rating. If replacement is required ensure that fasteners of the same rating & quality are used. Contact an authorized **Trailboss** dealer if further information is required.
8. Ensure that all hardware is fastened to torque list below check fasteners on regular basis.
9. Tow bar load rating sticker provided with this product shall be conspicuously located on inside rear end of the driver's door. **(See diagram below).**
10. Trailboss recommends that you check your tow ball to ensure that it complies with the Australian standards **AS 4177.2.**
11. **PLEASE NOTE:** It is advised to remove your lug or tbn when not actually towing so as to produce a clear view of the vehicles registration plate if obscured, and to also provide maximum available departure angle
12. Pull Pin must be fit in down position.



Place load rating sticker
inside driver's door here

FOR TRAILER TOWING PURPOSES ONLY
For towing capacity details please refer to vehicle owner's manual
or to the manufacturer. Overloading can void your warranties.

RECOMMENDED ASSEMBLY TORQUE LISTING

Diameter Grade 8.8 Bolt

M6	9.5 Nm
M8	21.7 Nm
M10	43.4 Nm
M12	77.3Nm
M14	146 Nm
M16	189.8 Nm

Tow bar Maintenance and Care.

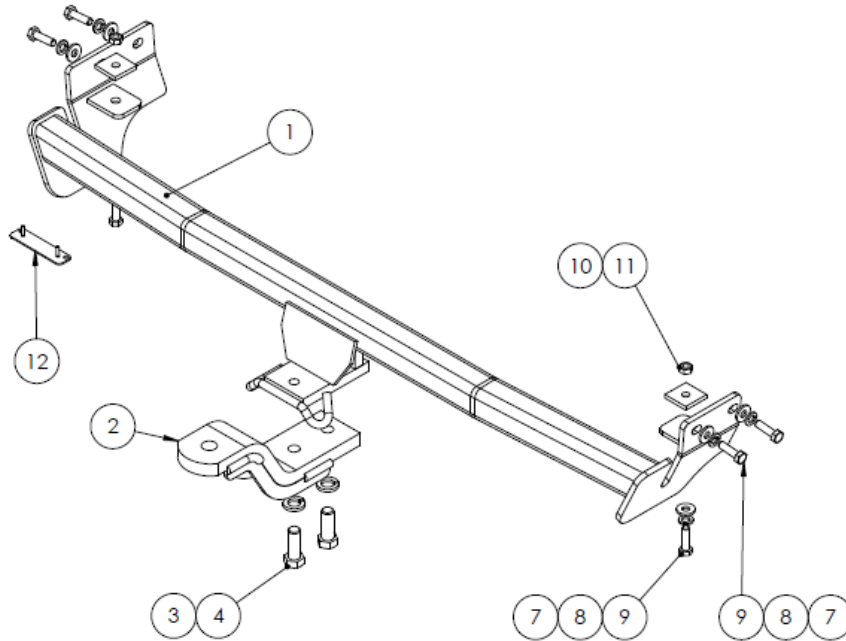
Trailboss recommends that bolt torque's, as listed below, are routinely and regularly inspected and checked for correct tension. Replace any worn or defective parts.

We recommended to remove Tow Ball Mounts (TBM's, tongues or lugs) when not being used for any considerable length of time.

So as to avoid injury, when not towing it is suggested that the tongue, Pull Pin and R-clip are removed then stored in a safe, clean and dry place, away from excessive moisture.

Hitch Pull Pins and spring "R" clips are regularly checked for proper installation. Replace any worn or defective parts.

Towbar Fitting Instructions
 To Suit KIA CERATO SLi SEDAN / HATCH '10/2010 On
 Part Number KM17L
 Rating 1200/75 kg



QTY.	DESCRIPTION	ITEM NO.
1	WELD ASSY.	1
1	ASSEMBLY LUG	2
2	M16 S/WASHER	3
2	M16 x 45 2.OP BOLT	4
1	BOLT PACK	5
1	PLASTIC SHEET BAG	6
6	WSHR FT M10 X 25.4 X 3	7
6	Wshr spring ft sec M12x4.0x2.5mm z/p	8
6	M10 x 1.25 x 35mm Bolt	9
2	LOOSE PLT 40 x 6 x 40 Ø11	10
2	NUT HX M10-1.25 Z/P	11
1	PLUG BRACKET	12

1. Disconnect and remove taillight assemblies via 2 screws inside tailgate cavity.
2. Remove 2 scrivets and 1 screw inside taillight cavity on both sides.
3. Remove 3 screw from inside wheel arch from both sides and 2 scrivets from under the rear bumper.
4. Remove bumper bar.
5. Remove impact beam assembly
6. Fit towbar according to diagram above.
7. Torque all fasteners to specification.
8. Cut 80mm by 135 deep from the bottom edge, centre line of the bumper.
9. Refit bumper bar.



Wiring Loom Fitting Instructions
To Suit Kia TD Cerato 5DR Hatch
Part Number 100530-WL

Wiring Loom Installation Instructions

Kia TD Cerato 5DR Hatch
Part No: 100530-WL

Tail Harness Length Required: 1200mm
RPA Override Switch Part No: 04848 (If Fitted)

Wiring Loom Installation Time: Approx 30 Mins

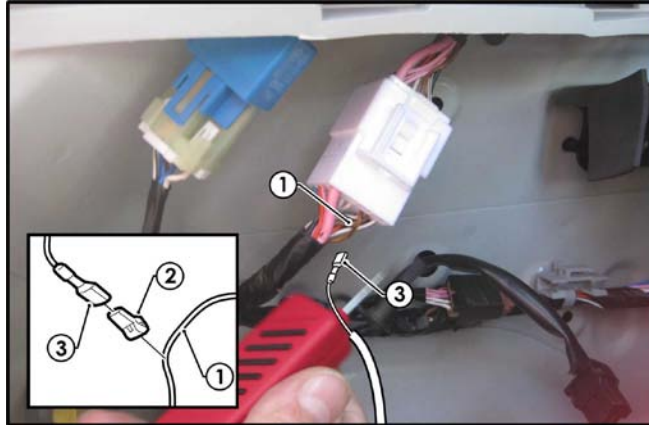


Wiring Loom Fitting Instructions
To Suit Kia TD Cerato 5DR Hatch
Part Number 100530-WL

1. In the luggage compartment, fold the rear seats forward.
2. Remove the floor cover carpet.
3. Remove the centre storage tray.
4. Remove the two outer storage trays by first removing the screws.
5. Remove the rear trim by first removing the three clips.
6. On the LHS side trim, remove the two floor screws.
7. Remove the two clips.
8. Remove the bolts located underneath the two upper caps.
9. Remove the LHS side trim.
10. Repeat Steps 6-9 for the RHS.
11. In the rear of the luggage compartment, drill a Ø31mm hole in the vehicle sheet metal below the existing vehicle grommet.
12. File any rough or sharp edges and spray on rust inhibitor.
13. Locate and disconnect the LHS tail light connectors.
14. Patch in the Trailer Harness mating connectors.

TRAILBOSS

Wiring Loom Fitting Instructions To Suit Kia TD Cerato 5DR Hatch Part Number 100530-WL



15. In the upper LHS of the luggage compartment, locate the vehicle 'BROWN/ORANGE' reverse signal wire (1).
16. Following the table below, connect the ezy tap (2) to the vehicle 'BROWN/ORANGE' reverse signal wire (1).
17. Connect the Trailer Harness reverse terminal (3) to the ezy tap (2).

Function	Trailer Patch	Vehicle Connector
REVERSE	BLACK	BROWN / ORANGE

18. Route the Trailer Harness (P/No: 100530-WL) across the rear of the luggage compartment and towards the RHS tail light connectors.
19. Locate and disconnect the RHS tail light connectors.
20. Patch in the Trailer Harness mating connectors.
21. From outside the vehicle, mount the trailer socket to the towbar mounting bracket using M4 fasteners (not supplied).
22. Route the Tail Harness (tail length 1200mm) across the towbar towards the LHS of the vehicle and up through the previously drilled out hole.
23. Ensure the Tail Harness grommet is seated correctly and secure in place using a cable tie (not supplied).
24. Connect the Tail Harness 8-way connector to the Trailer Harness mating 8-way connector.
25. Test the Trailer Harness function using a Light Board or multi-meter.
26. Secure all Harnesses using cables ties (not supplied).
27. Re-fit all removed parts and secure all fasteners, ensuring there are no squeaks or rattles.
28. Place the instructions in the glove box after fitment.