

TRAILBOSS

Towbar Fitting Instructions
To Suit **KIA CERATO SEDAN '14-ON**
Part Number **KM19L**
Rating **1200/75 kg**

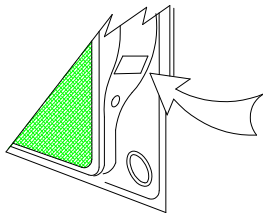
PLACE THESE INSTRUCTIONS IN THE VEHICLE'S GLOVEBOX AFTER INSTALLATION IS COMPLETED

WARNING:

1. Do not, drill, cut, weld or otherwise modify the tow bar.
2. If you are using electric welding on a motor vehicle, **always** check that the vehicle is not equipped with electronic engine or instrument management equipment. Failure to do so could **destroy** any onboard computers. If in doubt, check with the vehicle's manufacturer.
3. The high tensile fasteners supplied with this product were used to achieve the specified rating. If replacement is required ensure that fasteners of the same rating & quality are used. Contact an authorised **Trailboss** dealer if further information is required.
4. If TBM is used in inverted position tow ball may make contact with rear tailgate when lowered, which could cause damage.

General:

1. Ensure all hardware items have been included refer to assembly diagram.
2. It is recommended that the instructions are read through and completely understood before making any attempt to fit this product.
3. Be wary of any changes to vehicle designs or other accessories that may conflict with the installation of this product.
4. Before drilling ensure that the area is clear of fuel, electrical & other components.
5. All holes drilled into the body panels shall have all burrs & swarf removed then coated with a suitable rust preventative paint.
6. For vehicles that require the bumper to be cut. Ensure cut out area is in correct position on the vehicle prior to cutting the bumper.
7. The high tensile fasteners supplied with this product were used to achieve the specified rating. If replacement is required ensure that fasteners of the same rating & quality are used. Contact an authorized **Trailboss** dealer if further information is required.
8. Ensure that all hardware is fastened to torque list below check fasteners on regular basis.
9. Tow bar load rating sticker provided with this product shall be conspicuously located on inside rear end of the driver's door. **(See diagram below).**
10. Trailboss recommends that you check your tow ball to ensure that it complies with the Australian standards **AS 4177.2**.
11. **PLEASE NOTE:** It is advised to remove your lug or tbm when not actually towing so as to produce a clear view of the vehicles registration plate if obscured, and to also provide maximum available departure angle
12. Pull Pin must be fit in down position.



Place load rating sticker
inside driver's door here

FOR TRAILER TOWING PURPOSES ONLY
For towing capacity details please refer to vehicle owner's manual or to the manufacturer. Overloading can void your warranties.

RECOMMENDED ASSEMBLY TORQUE LISTING

| Diameter | Grade 8.8 Bolt |
|----------|----------------|
| M6 | 9.5 Nm |
| M8 | 21.7 Nm |
| M10 | 43.4 Nm |
| M12 | 77.3Nm |
| M14 | 146 Nm |
| M16 | 189.8 Nm |

Tow bar Maintenance and Care.

Trailboss recommends that bolt torque's, as listed below, are routinely and regularly inspected and checked for correct tension. Replace any worn or defective parts.

We recommended to remove Tow Ball Mounts (TBM's, tongues or lugs) when not being used for any considerable length of time.

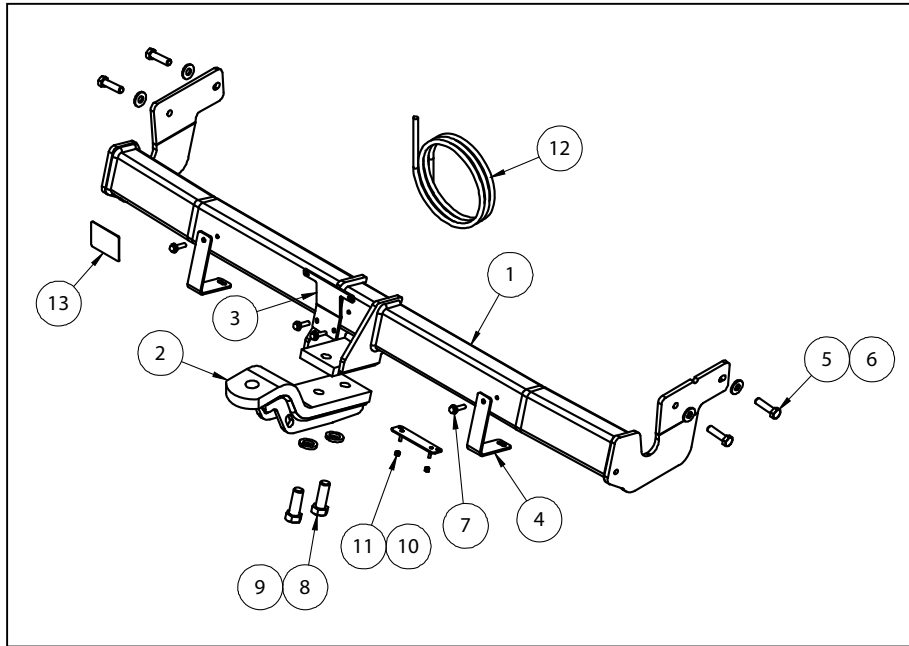
So as to avoid injury, when not towing it is suggested that the tongue, Pull Pin and R-clip are removed then stored in a safe, clean and dry place, away from excessive moisture.

Hitch Pull Pins and spring "R" clips are regularly checked for proper installation. Replace any worn or defective parts.

TRAILBOSS

Towbar Fitting Instructions
To Suit **KIA CERATO SEDAN '14-ON**
Part Number **KM19L**
Rating **1200/75 kg**

PLACE THESE INSTRUCTIONS IN THE VEHICLE'S GLOVEBOX AFTER INSTALLATION IS COMPLETED



| QTY. | DESCRIPTION | ITEM NO. |
|------|------------------------------|----------|
| 1 | KIA CERATO WELDED ASSY | 1 |
| 1 | TONGUE ASSEMBLY | 2 |
| 1 | SENSOR TAB | 3 |
| 2 | BUMPER TAB | 4 |
| 4 | SET SCREW HX HD M10x45x1.25P | 5 |
| 4 | WASHER FT M10x25.4x3 | 6 |
| 4 | TEK SCREW 14-20 HEX HD 22mm | 7 |
| 2 | BOLT M16x45 2.0P | 8 |
| 2 | SPRING WASHER M16x5x3.5 | 9 |
| 1 | PLUG BRACKET | 10 |
| 2 | NUT NYLOC M4-0.7 Z/P | 11 |
| 1 | WIRING LOOM | 12 |
| 1 | ACRYLIC COMPLIANCE PLATE | 13 |



Towbar Fitting Instructions
To Suit **KIA CERATO SEDAN '14-ON**
Part Number **KM19L**
Rating **1200/75 kg**

PLACE THESE INSTRUCTIONS IN THE VEHICLE'S GLOVEBOX AFTER INSTALLATION IS COMPLETED

INSTRUCTION:

1. Remove 2 Screws located inside the rear wheel well.
Repeat for opposite side of vehicle.
 2. Remove Screw securing upper bumper lip, located in rear wheel well above screws removed in step 1.
 3. Remove 3x Scrivets located on the underside of bumper, behind the rear RHS tyre.
 4. Detach lower mudguard from vehicle body by removing scrivets and screws securing flap.
 5. Remove 2x Scrivets from behind LHS rear tyre in similar manner to step 3.
 6. Remove access panels inside vehicle boot lid cavity.
 7. From inside the newly exposed section, remove 4x Nuts securing tail light to chassis.
Disconnect white plug and remove tail light by pulling rearwards of vehicle.
Repeat for opposite side of vehicle.
 8. In newly exposed section after removing tail light, remove 1x Scrivet and 1x Screw.
Repeat for opposite side of vehicle.
 9. From underneath vehicle, remove 4x Screws (2 per side) securing bumper assembly to rear vehicle panel.
Carefully peel away bumper from vehicle and disconnect any rear parking sensors and keyless entry sensors if supplied.
Note: 2 people are required for task.
 10. Remove 5x Scrivets securing rear impact beam to inside of rear bumper assembly.
 11. Mount Towbar assembly to vehicle, secure with M10 Bolts supplied and torque to 68Nm.
 12. Mount supplied brackets to outermost holes on Towbar crosstube using supplied self-tapping screws to allow for connection to bumper upon reassembly.
 13. If vehicle is mounted with a keyless entry sensor, install onto supplied plate and mount with self-tapping Screws to central section of Towbar.
- CAUTION**
Do not overtighten Screws as they may break and render installation onto towbar difficult.
14. Perform a cut in the Bumper, central to Towbar centre section.
Cut must be 100mm wide and 150mm long, starting from lower lip.
 15. Reinstall Bumper following steps 1 – 8 in reverse.



Wiring Loom Fitting Instructions
To Suit Kia Cerato
Part Number 101234-WL

Wiring Loom Installation Instructions

Kia Cerato
Part No: 101234-WL

Tail Harness Length Required: 1200mm

Wiring Loom Installation Time: Approx 30 Mins



Wiring Loom Fitting Instructions
To Suit Kia Cerato
Part Number 101234-WL

1. Inside the luggage compartment, remove the floor carpet.
2. Remove the rear trim by removing the three fasteners.
3. Remove the three fasteners and one screw from the LHS luggage compartment trim to dislodge enough of the trim. Repeat for the RHS. .
4. At the LHS rear quarter, near the vent, locate and remove the vehicle grommet. If the grommet hole is occupied, choose a suitable location next to the existing grommet and drill a Ø30mm hole. Apply rust inhibitor after drilling (not supplied).
5. Disconnect the LHS tail light connectors and connect the trailer patch (P/No: 101234-WL) LHS branch connectors in between.
6. Locate the vehicle harness next to the LHS boot hinge and carefully expose the vehicle harness wires.
7. Secure the supplied scotch lock onto the vehicle harness GREY/WHITE reverse wire and connect the trailer patch BLACK wire terminal to the scotch lock (**due to possible vehicle variations, always confirm with a multi-meter the correct vehicle wire functions are identified before scotch locking or soldering**).

| Vehicle Wire | Trailer Patch | Function |
|--------------|---------------|----------|
| GREY/WHITE | BLACK | REVERSE |

8. Secure the trailer patch ground ring terminal to a suitable location on the vehicle sheet metal using a tek screw (not supplied).
9. Route the trailer patch RHS branch across the rear of the vehicle towards the RHS tail lights. Disconnect the RHS tail light connectors and connect the trailer patch (P/No: 101234-WL) LHS branch connectors in between.
10. At the rear exterior of the vehicle, mount the tail harness socket to the towbar mounting bracket using M4 fasteners (not supplied).
11. Connect the tail harness 8-way connector to the trailer patch 8-way mating connector.
12. Test the Trailer Harness function using a Light Board or multi-meter.
13. Secure all Harnesses using cables ties (not supplied).
14. Re-fit all removed parts and secure all fasteners, ensuring there are no squeaks or rattles.
15. Place the instructions in the glove box after fitment.