

# TRAILBOSS

Towbar Fitting Instructions  
To Suit **MAZDA CX-3 DK SERIES**  
Part Number **MA86L**  
Rating **1200/120 kg**

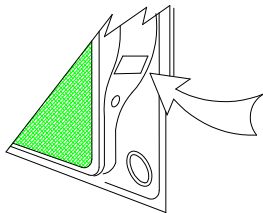
PLACE THESE INSTRUCTIONS IN THE VEHICLE'S GLOVEBOX AFTER INSTALLATION IS COMPLETED

## **WARNING:**

1. Do not, drill, cut, weld or otherwise modify the tow bar.
2. If you are using electric welding on a motor vehicle, **always** check that the vehicle is not equipped with electronic engine or instrument management equipment. Failure to do so could **destroy** any onboard computers. If in doubt, check with the vehicle's manufacturer.
3. The high tensile fasteners supplied with this product were used to achieve the specified rating. If replacement is required ensure that fasteners of the same rating & quality are used. Contact an authorised **Trailboss** dealer if further information is required.
4. If TBM is used in inverted position tow ball may make contact with rear tailgate when lowered, which could cause damage.

## **General:**

1. Ensure all hardware items have been included refer to assembly diagram.
2. It is recommended that the instructions are read through and completely understood before making any attempt to fit this product.
3. Be wary of any changes to vehicle designs or other accessories that may conflict with the installation of this product.
4. Before drilling ensure that the area is clear of fuel, electrical & other components.
5. All holes drilled into the body panels shall have all burrs & swarf removed then coated with a suitable rust preventative paint.
6. For vehicles that require the bumper to be cut. Ensure cut out area is in correct position on the vehicle prior to cutting the bumper.
7. The high tensile fasteners supplied with this product were used to achieve the specified rating. If replacement is required ensure that fasteners of the same rating & quality are used. Contact an authorized **Trailboss** dealer if further information is required.
8. Ensure that all hardware is fastened to torque list below check fasteners on regular basis.
9. Tow bar load rating sticker provided with this product shall be conspicuously located on inside rear end of the driver's door. **(See diagram below).**
10. Trailboss recommends that you check your tow ball to ensure that it complies with the Australian standards **AS 4177.2.**
11. **PLEASE NOTE:** It is advised to remove your lug or tbm when not actually towing so as to produce a clear view of the vehicles registration plate if obscured, and to also provide maximum available departure angle
12. Pull Pin must be fit in down position.



Place load rating sticker  
inside driver's door here

**FOR TRAILER TOWING PURPOSES ONLY**  
For towing capacity details please refer to vehicle owner's manual or to the manufacturer. Overloading can void your warranties.

### **RECOMMENDED ASSEMBLY TORQUE LISTING**

Diameter	Grade 8.8 Bolt
M6	9.5 Nm
M8	21.7 Nm
M10	43.4 Nm
M12	77.3Nm
M14	146 Nm
M16	189.8 Nm

## **Tow bar Maintenance and Care.**

Trailboss recommends that bolt torque's, as listed below, are routinely and regularly inspected and checked for correct tension. Replace any worn or defective parts.

We recommended to remove Tow Ball Mounts (TBM's, tongues or lugs) when not being used for any considerable length of time.

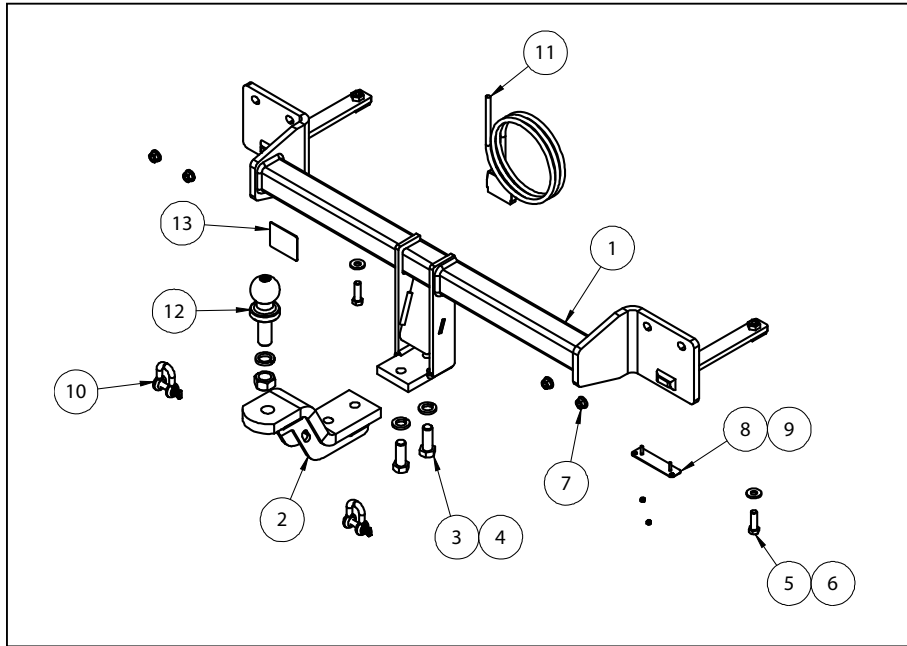
So as to avoid injury, when not towing it is suggested that the tongue, Pull Pin and R-clip are removed then stored in a safe, clean and dry place, away from excessive moisture.

Hitch Pull Pins and spring "R" clips are regularly checked for proper installation. Replace any worn or defective parts.

# TRAILBOSS

Towbar Fitting Instructions  
 To Suit **MAZDA CX-3 DK SERIES**  
 Part Number **MA86L**  
 Rating **1200/120 kg**

PLACE THESE INSTRUCTIONS IN THE VEHICLE'S GLOVEBOX AFTER INSTALLATION IS COMPLETED



QTY.	DESCRIPTION	ITEM NO
1	WELDED ASSEMBLY	1
1	LUG ASSY	2
2	BOLT M16x45 2.0P	3
2	SPRING WASHER M16x5x3.5	4
2	SET SCREW M10-1.5x35mm	5
2	WASHER FT M10x25.4x3	6
4	FLANGE NUT M10x1.25P	7
1	PLUG BRACKET	8
2	NUT NYLOC M4-0.7 Z/P	9
2	10mm "D" SHACKLE	10
1	WIRING LOOM	11
1	50mm TOWBALL	12
1	ACRYLIC COMPLIANCE PLATE	13



Towbar Fitting Instructions  
To Suit **MAZDA CX-3 DK SERIES**  
Part Number **MA86L**  
Rating **1200/120 kg**

PLACE THESE INSTRUCTIONS IN THE VEHICLE'S GLOVEBOX AFTER INSTALLATION IS COMPLETED

**INSTRUCTION:**

1. Release tail gate to expose boot cabin.
2. Remove 4 x Screws on both Passenger and Drivers side. Where 2 x Screws secure the tail light and a further 2 x secure the bumper to the vehicle.
3. Carefully remove tail light and disconnect wiring loom. Repeat for Passenger and Driver side.
4. On the underside of the vehicle remove 2 x Screws where the bumper joins with the guard liner. Repeat for passenger and driver side.
5. Remove 4 x trim clips on the underside of the bumper. Detach the plastic centre garnish for the Towbar.
6. Remove 2 x Torx screws on the centre of the bumper where the licence plate holder is located.
7. On the inside of the guard liner remove 6 x Trim Clips and 2 x Screws. Repeat for Passenger and Driver side.
8. On the underside of the guard moulding remove the male trim clip located above of the centre of the wheel. Repeat for Passenger and Driver side.
9. On the underside of the guard moulding remove the second male trim clip located rear of the centre of the wheel. Repeat for Passenger and Driver side.
10. Carefully remove the outer guard moulding. Then remove 1 x trim Clip and 1 x Set Screw securing the bumper to the reinforcement. Repeat for Driver and Passenger side.
11. Carefully remove the bumper by first peeling away at the sides. Then lift the bumper up to clear the key way locking tab to release the bumper. Carefully disconnect any factory fitted reverse parking sensors.

**Note:** It may be easier to remove the bumper by partially detaching the boot seal.

12. Remove 8 x Hex Flange nuts to detach the factory impact beam and discard.
13. Remove 2 x Trim Clips that secure the horizontal bumper and discard.
14. Slide Towbar into the respective chassis rails. Loosely secure back panel flange nuts and vertical set screws on the underside of the chassis rails.

Torque Fasteners Specifications listed below:

M10 x 1.25P Hex Flange Nut : 80Nm

M10 x 1.5P Set Screw : 44Nm

15. Reattach bumper by following steps 1-11 in reverse.



Wiring Loom Fitting Instructions  
To Suit Mazda CX-3  
Part Number 101292-WL

Wiring Loom Installation Instructions

Mazda CX-3  
Part No: 101292-WL

Tail Length Required: 1200mm

Wiring Loom Installation Time: Approx 30 Mins



Wiring Loom Fitting Instructions  
To Suit Mazda CX-3  
Part Number 101292-WL

1. In the luggage compartment, remove the floor cover carpet and fold the rear seats forward.
2. Remove the foam tool trays.
3. Remove the rear centre luggage compartment trim by first removing the clips and two plastic rivets and pulling in an upwards direction.
4. On the RH luggage compartment trim, remove the plastic rivet and then remove the two bolts underneath the cargo hooks latches.
5. Dislodge the RHS trim and disconnect the light and then remove the trim.
6. On the LHS of the luggage compartment, remove the plastic rivet and then remove the two bolts underneath the cargo hooks latches and then remove the LHS trim.
7. At the exterior LHS rear quarter of the vehicle, locate a suitable location / surface above the vent for drilling (ensure there are no obstacles on the other side before drilling).
8. Drill a Ø30mm hole into the vehicle. File down any rough or sharp edges and apply rust inhibitor (not supplied) after.
9. Disconnect the interior LHS tail light connectors and patch the trailer patch (P/No: 101292-WL) connectors in between.
10. Secure the trailer patch ground ring terminal to the vehicle grounding point locate above the LHS wheel arch by using the existing vehicle fastener.
11. Route the trailer patch across the rear of the vehicle and towards the RHS tail light assembly.
12. Disconnect the interior RHS tail light connectors and patch the trailer patch (P/No:101292-WL) connectors in between.
13. At the rear exterior of the vehicle, mount the tail harness socket to the towbar mounting bracket using M4 fasteners (not supplied).
14. Route the tail harness (tail length: 1200mm) across the LHS into the drilled out grommet hole. Adjust the trailer patch harness grommet so that it is seated correctly and cable tie (not supplied) in place.
15. Connect the tail harness 8-way connector to the trailer patch 8-way mating connector.
16. Test the body harness using a light board or multi-meter.
17. Secure all harnesses using cables ties (not supplied).
18. Re-fit all removed parts and secure all fasteners.
19. Place instructions in glove box after fitment.