



Towbar Fitting Instructions  
 To Suit **MAZDA CX-3 DK MY17**  
 Part Number **MA88L**  
 Rating **1200/50 kg**

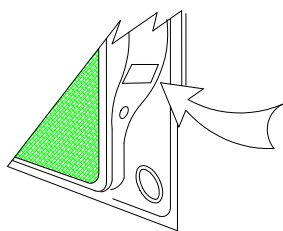
PLACE THESE INSTRUCTIONS IN THE VEHICLE'S GLOVEBOX AFTER INSTALLATION IS COMPLETED

**WARNING:**

1. Do not, drill, cut, weld or otherwise modify the tow bar.
2. If you are using electric welding on a motor vehicle, **always** check that the vehicle is not equipped with electronic engine or instrument management equipment. Failure to do so could **destroy** any onboard computers. If in doubt, check with the vehicle's manufacturer.
3. The high tensile fasteners supplied with this product were used to achieve the specified rating. If replacement is required ensure that fasteners of the same rating & quality are used. Contact an authorised **Trailboss** dealer if further information is required.
4. If TBM is used in inverted position tow ball may make contact with rear tailgate when lowered, which could cause damage.

**General:**

1. Ensure all hardware items have been included refer to assembly diagram.
2. It is recommended that the instructions are read through and completely understood before making any attempt to fit this product.
3. Be wary of any changes to vehicle designs or other accessories that may conflict with the installation of this product.
4. Before drilling ensure that the area is clear of fuel, electrical & other components.
5. All holes drilled into the body panels shall have all burrs & swarf removed then coated with a suitable rust preventative paint.
6. For vehicles that require the bumper to be cut. Ensure cut out area is in correct position on the vehicle prior to cutting the bumper.
7. The high tensile fasteners supplied with this product were used to achieve the specified rating. If replacement is required ensure that fasteners of the same rating & quality are used. Contact an authorized **Trailboss** dealer if further information is required.
8. Ensure that all hardware is fastened to torque list below check fasteners on regular basis.
9. Tow bar load rating sticker provided with this product shall be conspicuously located on inside rear end of the driver's door. **(See diagram below).**
10. Trailboss recommends that you check your tow ball to ensure that it complies with the Australian standards **AS 4177.2**.
11. **PLEASE NOTE:** It is advised to remove your LUG or TBM when not actually towing so as to produce a clear view of the vehicles registration plate if obscured, and to also provide maximum available departure angle



Place load rating sticker inside driver's door here

**FOR TRAILER TOWING PURPOSES ONLY**  
 For towing capacity details please refer to vehicle owner's manual or to the manufacturer. Overloading can void your warranties.

RECOMMENDED ASSEMBLY TORQUE LISTING	
Diameter	Grade 8.8 Bolt
M6	9.5 Nm
M8	21.7 Nm
M10	43.4 Nm
M12	77.3Nm
M14	146 Nm
M16	189.8 Nm

**Tow bar Maintenance and Care.**

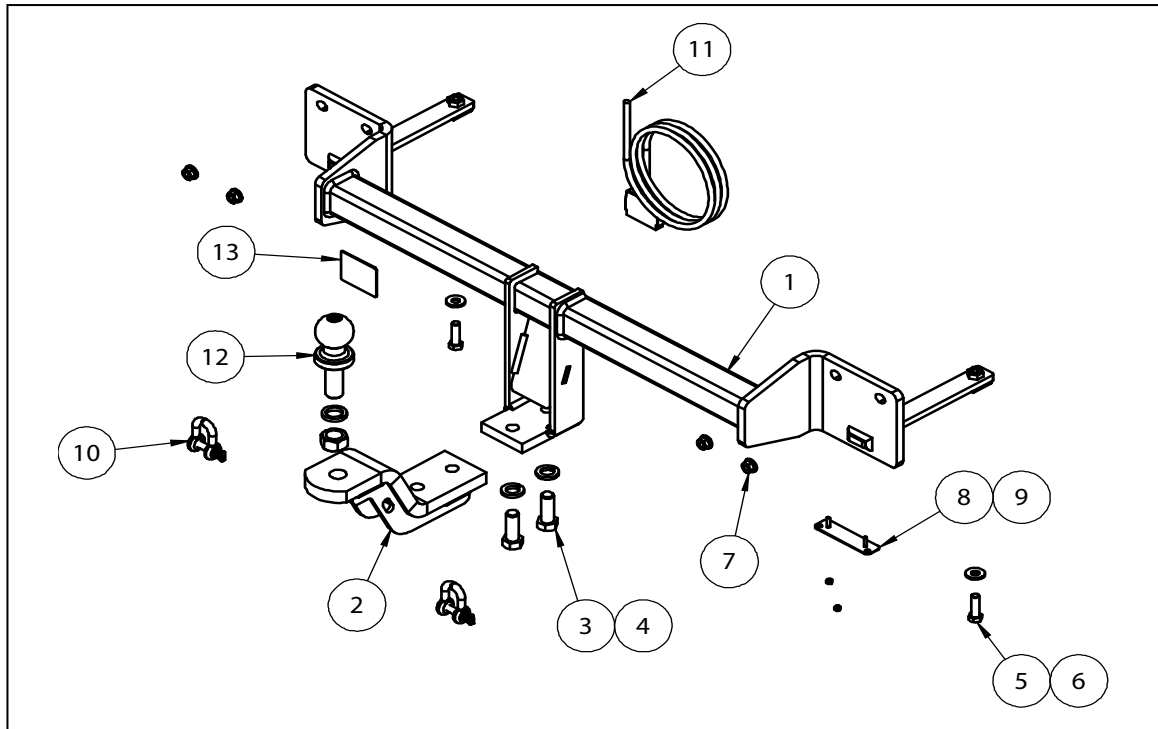
Trailboss recommends that bolt torque's, as listed below, are routinely and regularly inspected and checked for correct tension. Replace any worn or defective parts.  
 We recommended to remove Tow Ball Mounts (TBM's, tongues or lugs) when not being used for any considerable length of time.  
 So as to avoid injury, when not towing it is suggested that the tongue, Pull Pin and R-clip are removed then stored in a safe, clean and dry place, away from excessive moisture.  
 Hitch Pull Pins and spring "R" clips are regularly checked for proper installation. Replace any worn or defective parts.

**Cequent Customer Service**  
 Ph: 1800 812 017 Fax: 03 9898 3299  
 Email: [info@cequent.com.au](mailto:info@cequent.com.au)  
 Post: PO Box 4050, Dandenong South VIC 3175

# TRAILBOSS

Towbar Fitting Instructions  
 To Suit **MAZDA CX-3 DK MY17**  
 Part Number **MA88L**  
 Rating **1200/50 kg**

PLACE THESE INSTRUCTIONS IN THE VEHICLE'S GLOVEBOX AFTER INSTALLATION IS COMPLETED



ITEM	DESCRIPTION	QTY
1	WELDED ASSEMBLY	1
2	LUG ASSY	1
3	BOLT M16x45 2.0P	2
4	SPRING WASHER M16x5x3.5	2
5	SET SCREW M10-1.5x35mm	2
6	WASHER FT M10x25.4x3	2
7	FLANGE NUT M10x1.25P	4
8	PLUG BRACKET	1
9	NUT NYLOC M4-0.7 Z/P	2
10	"D" SHACKLE 10mm	2
11	WIRING LOOM	1
12	50mm TOWBALL	1
13	ACRYLIC COMPLIANCE PLATE	1

**Cequent Customer Service**  
 Ph: 1800 812 017 Fax: 03 9898 3299  
 Email: [info@cequent.com.au](mailto:info@cequent.com.au)  
 Post: PO Box 4050, Dandenong South VIC 3175

# TRAILBOSS

Towbar Fitting Instructions  
To Suit MAZDA CX-3 DK MY17  
Part Number MA88L  
Rating 1200/50 kg

PLACE THESE INSTRUCTIONS IN THE VEHICLE'S GLOVEBOX AFTER INSTALLATION IS COMPLETED

1. Release tail gate to expose boot cabin.



2. Remove 4 x screws on both passenger and drivers side. Where 2 x screws secure the tail light and a further 2 x secure the bumper to the vehicle.



3. Carefully remove tail light and disconnect wiring loom. Repeat for passenger and driver side.

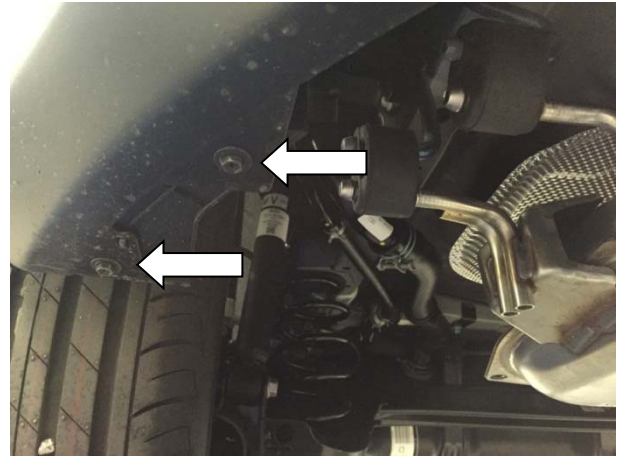


**Cequent Customer Service**  
Ph: 1800 812 017 Fax: 03 9898 3299  
Email: [info@cequent.com.au](mailto:info@cequent.com.au)  
Post: PO Box 4050, Dandenong South VIC 3175

Towbar Fitting Instructions  
To Suit MAZDA CX-3 DK MY17  
Part Number MA88L  
Rating 1200/50 kg

PLACE THESE INSTRUCTIONS IN THE VEHICLE'S GLOVEBOX AFTER INSTALLATION IS COMPLETED

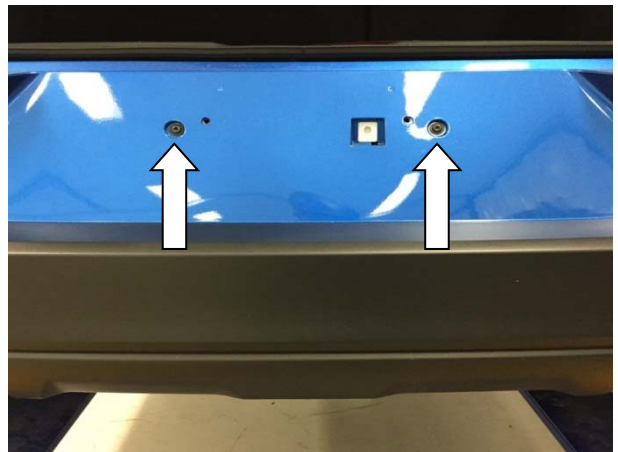
4. On the underside of the vehicle remove 2 x screws where the bumper joins with the guard liner. Repeat for passenger and driver side.



5. Remove 4 x trim clips on the underside of the bumper. Detach the plastic centre garnish for the towbar.



6. Remove 2 x Torx screws on the centre of the bumper where the licence plate holder is located.



**Cequent Customer Service**  
Ph: 1800 812 017 Fax: 03 9898 3299  
Email: [info@cequent.com.au](mailto:info@cequent.com.au)  
Post: PO Box 4050, Dandenong South VIC 3175



# TRAILBOSS

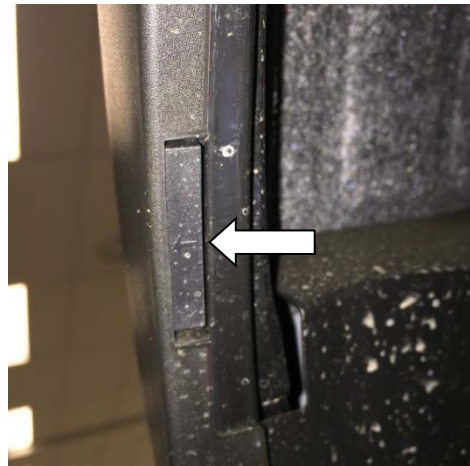
Towbar Fitting Instructions  
To Suit MAZDA CX-3 DK MY17  
Part Number MA88L  
Rating 1200/50 kg

PLACE THESE INSTRUCTIONS IN THE VEHICLE'S GLOVEBOX AFTER INSTALLATION IS COMPLETED

7. On the inside of the guard liner remove 6 x Trim Clips and 2 x Screws. Repeat for passenger and driver side.



8. On the underside of the guard moulding remove the male trim clip located above of the centre of the wheel. Repeat for passenger and driver side.



9. On the underside of the guard moulding remove the second male trim clip located rear of the centre of the wheel. Repeat for passenger and driver side.



**Cequent Customer Service**  
Ph: 1800 812 017 Fax: 03 9898 3299  
Email: [info@cequent.com.au](mailto:info@cequent.com.au)  
Post: PO Box 4050, Dandenong South VIC 3175

# TRAILBOSS

Towbar Fitting Instructions  
To Suit MAZDA CX-3 DK MY17  
Part Number MA88L  
Rating 1200/50 kg

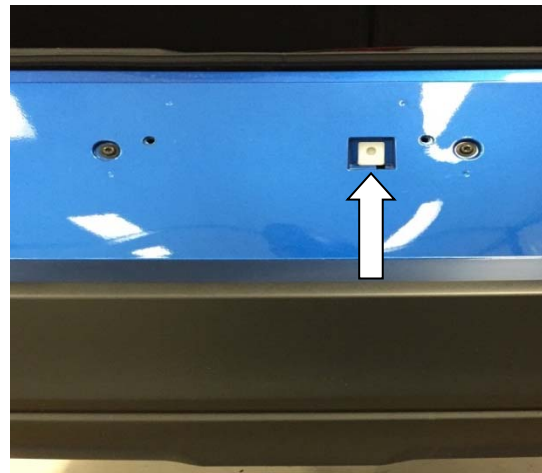
PLACE THESE INSTRUCTIONS IN THE VEHICLE'S GLOVEBOX AFTER INSTALLATION IS COMPLETED

10. Carefully remove the outer guard moulding. Then remove 1 x trim Clip and 1 x Set Screw securing the bumper to the reinforcement. Repeat for driver and passenger side.



11. Carefully remove the bumper by first peeling away at the sides. Then lift the bumper up to clear the key way locking tab to release the bumper. Carefully disconnect any factory fitted reverse parking sensors.

**Note:** It may be easier to remove the bumper by partially detaching the boot seal.



12. Remove 8 x Hex Flange nuts to detach the factory impact beam and discard.



**Cequent Customer Service**  
Ph: 1800 812 017 Fax: 03 9898 3299  
Email: [info@cequent.com.au](mailto:info@cequent.com.au)  
Post: PO Box 4050, Dandenong South VIC 3175

# TRAILBOSS

Towbar Fitting Instructions  
To Suit MAZDA CX-3 DK MY17  
Part Number MA88L  
Rating 1200/50 kg

PLACE THESE INSTRUCTIONS IN THE VEHICLE'S GLOVEBOX AFTER INSTALLATION IS COMPLETED

13. Remove 2 x Trim Clips that secure the horizontal bumper and discard.



14. Slide towbar into the respective chassis rails. Loosely secure back panel flange nuts and vertical set screws on the underside of the chassis rails.

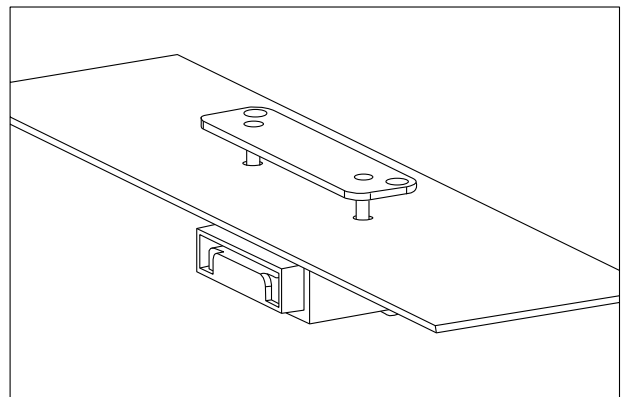
Torque Fasteners Specifications listed below:

M10 x 1.25P Hex Flange Nut : 80Nm

M10 x 1.5P Set Screw : 44Nm



15. Determine an appropriate position for the plug bracket. Mark out and drill 2x  $\varnothing 5$ mm holes 69mm apart on bumper skin to support plug bracket.



**Cequent Customer Service**  
Ph: 1800 812 017 Fax: 03 9898 3299  
Email: [info@cequent.com.au](mailto:info@cequent.com.au)  
Post: PO Box 4050, Dandenong South VIC 3175

# TRAILBOSS

Towbar Fitting Instructions  
To Suit MAZDA CX-3 DK MY17  
Part Number MA88L  
Rating 1200/50 kg

PLACE THESE INSTRUCTIONS IN THE VEHICLE'S GLOVEBOX AFTER INSTALLATION IS COMPLETED

16. Reattach bumper by following steps 1-11 in reverse.



**Cequent Customer Service**  
Ph: 1800 812 017 Fax: 03 9898 3299  
Email: [info@cequent.com.au](mailto:info@cequent.com.au)  
Post: PO Box 4050, Dandenong South VIC 3175





Wiring Loom Fitting Instructions  
To Suit Mazda CX-3  
Part Number 101831-WL

Wiring Loom Installation Instructions

Mazda CX-3  
Part No: 101831-WL  
ECU: 04836

Tail Harness Length Required: 04844

Wiring Loom Installation Time: Approx 85 Mins



Wiring Loom Fitting Instructions  
To Suit Mazda CX-3  
Part Number 101831-WL

1. Disconnect negative battery terminal.
2. Inside the vehicle cabin, remove the LHS front door sill trim.
3. Dislodge the bottom of the LHS front rubber weather seal.
4. Remove the LHS kick panel trim by first removing the trimming nut.
5. Remove the LHS rear door sill trim.
6. Dislodge the bottom of the LHS rear rubber weather seal.
7. Dislodge the bottom of the LHS 'B' pillar trim.
8. Dislodge the bottom of the LHS 'C' pillar trim.
9. Remove the RHS front door sill trim.
10. Dislodge the bottom of the RHS front rubber weather seal.
11. Remove the RHS kick panel trim by first removing the trimming nut.
12. Remove the RHS rear door sill trim.
13. Dislodge the bottom of the RHS rear rubber weather seal.
14. Dislodge the bottom of the RHS 'B' pillar trim.
15. Dislodge the bottom of the RHS 'C' pillar trim.
16. In the luggage compartment, remove the parcel shelf and fold the rear seats forwards.
17. Remove both the floor cover carpets.
18. In the spare tire compartment, remove the foam inserts.
19. On the rear most luggage compartment scuff plate, remove the two clips.
20. Remove the rear most luggage compartment scuff plate by pulling in an upwards direction.
21. On the RHS luggage compartment trim remove the clip.
22. Remove the RHS cargo hooks by first removing the 10mm bolt.
23. Dislodge the RHS luggage compartment trim and disconnect the light connector.
24. Remove the RHS luggage compartment trim.

**Repeat steps 21 to 24 for the LHS.**



Wiring Loom Fitting Instructions  
To Suit Mazda CX-3  
Part Number 101831-WL

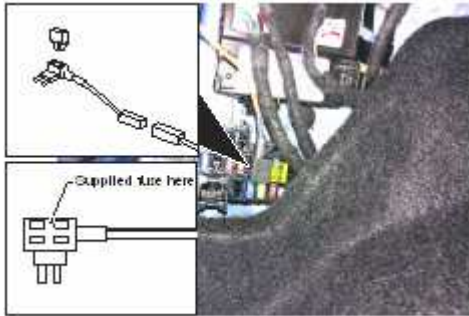
25. Connect the Trailer Wiring Harness ECU 12-way connector to the ECU (04836).
26. Clean the back of the ECU and the area on the sheet metal where the ECU will be mounted.
27. Secure the ECU to the previously cleaned surface.

**Always ensure the ECU is mounted with the 12way connector facing downwards to avoid any chance of water ingress or condensation.**

28. On the LHS rear luggage compartment, connect the 6-way connectors from the vehicles tail lamp wiring harness, to the 6-way mating connectors on the Trailer Wiring Harness.
29. Secure the Trailer Wiring Harness ground ring terminal to the vehicle earth point using the existing fastener.
30. Route the Trailer Wiring Harness towards the RHS of the vehicle following existing harness where possible.
31. On the RHS of the luggage compartment, connect the 6-way connectors from the vehicle's tail lamp wiring harness, to the 6-way connector patch on the Trailer Wiring Harness.
32. In the driver's side footwell, disconnect the RPA module 24-way female connector and insert the RPA Disable Patch 24-way connector's in-between.
33. Following the main harness on the RHS of the vehicle, route the RPA Disable Patch towards the rear of the vehicle.
34. Secure harness using cable ties. (not supplied)
35. Connect the Trailer Wiring Harness 1-way connector to the RPA Disable Patch 1-way mating connector.
36. From the luggage compartment area, route the Power Line along the vehicle harness where possible, to the fuse panel located in the front passenger side foot well.
37. Insert the supplied 20A fuse into the upper slot of the add-a-fuse.
38. At the fuse panel plug the add-a-fuse into the vacant fuse slot.

## Wiring Loom Fitting Instructions To Suit Mazda CX-3 Part Number 101831-WL

**Ensure the add-a-fuse is mounted in the orientation as shown.**



39. Connect the power connector to the add-a-fuse mating connector.
40. At the rear LHS exterior of the vehicle, drill grommet hole out to 30mm using a step drill.

**Ensure the interior area being drilled into is clear of any obstructions. Apply rust inhibitor after drilling.**

41. At the rear exterior of the vehicle, mount the tail harness socket to the towbar mounting bracket using M4 fasteners (not supplied).
42. Route the tail harness (P/No: 04844) across the LHS and up into the exposed grommet hole.
43. Adjust the trailer patch harness grommet so that it is seated correctly and cable tie (not supplied) in place.
44. Connect the tail harness 8-way connector to the trailer patch 8-way mating connector.
45. Connect wires with crimp, GREY and GREY /BLACK wires to the patch matching GREY and GREY/BLACK wires and insulate connections.
46. Test the trailer wiring harness function using a light board or multi-meter. Secure all harnesses using cable ties (not supplied).
47. Re-fit all removed parts and secure all fasteners, ensuring there are no squeaks or rattles.
48. Place the fitting instructions in the glove box after fitment.