

TRAILBOSS

Towbar Fitting Instructions
To Suit **QT1118L**
Part Number **TOYOTA FJ CRUISER 03/2011 ON**
Rating **2250/225 kg**

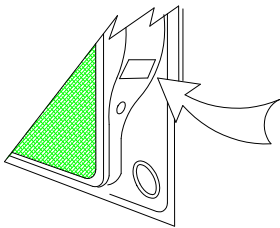
PLACE THESE INSTRUCTIONS IN THE VEHICLE'S GLOVEBOX AFTER INSTALLATION IS COMPLETE

WARNING:

1. Do not, drill, cut, weld or otherwise modify the tow bar.
2. If you are using electric welding on a motor vehicle, **always** check that the vehicle is not equipped with electronic engine or instrument management equipment. Failure to do so could **destroy** any onboard computers. If in doubt, check with the vehicle's manufacturer.
3. The high tensile fasteners supplied with this product were used to achieve the specified rating. If replacement is required ensure that fasteners of the same rating & quality are used. Contact an authorised **Trailboss** dealer if further information is required.

General:

1. Ensure all hardware items have been included refer to assembly diagram.
2. It is recommended that the instructions are read through and completely understood before making any attempt to fit this product.
3. Be wary of any changes to vehicle designs or other accessories that may conflict with the installation of this product.
4. Before drilling ensure that the area is clear of fuel, electrical & other components.
5. All holes drilled into the body panels shall have all burrs & swarf removed then coated with a suitable rust preventative paint.
6. For vehicles that require the bumper to be cut. Ensure cut out area is in correct position on the vehicle prior to cutting the bumper.
7. The high tensile fasteners supplied with this product were used to achieve the specified rating. If replacement is required ensure that fasteners of the same rating & quality are used. Contact an authorized **Trailboss** dealer if further information is required.
8. Ensure that all hardware is fastened to torque list below check fasteners on regular basis.
9. Tow bar load rating sticker provided with this product shall be conspicuously located on inside rear end of the driver's door. **(See diagram below)**.
10. Trailboss recommends that you check your tow ball to ensure that it complies with the Australian standards **AS 4177.2**.
11. **PLEASE NOTE:** It is advised to remove your lug or tbm when not actually towing so as to produce a clear view of the vehicles registration plate if obscured, and to also provide maximum available departure angle
12. Pull Pin must be fit in down position.



Place load rating sticker
inside driver's door here

FOR TRAILER TOWING PURPOSES ONLY
For towing capacity details please refer to vehicle owner's manual or to the manufacturer. Overloading can void your warranties.

RECOMMENDED ASSEMBLY TORQUE LISTING

Diameter	Grade 8.8 Bolt
M6	9.5 Nm
M8	21.7 Nm
M10	43.4 Nm
M12	77.3Nm
M14	146 Nm
M16	189.8 Nm

Tow bar Maintenance and Care.

Trailboss recommends that bolt torque's, as listed below, are routinely and regularly inspected and checked for correct tension. Replace any worn or defective parts.

We recommended to remove Tow Ball Mounts (TBM's, tongues or lugs) when not being used for any considerable length of time.

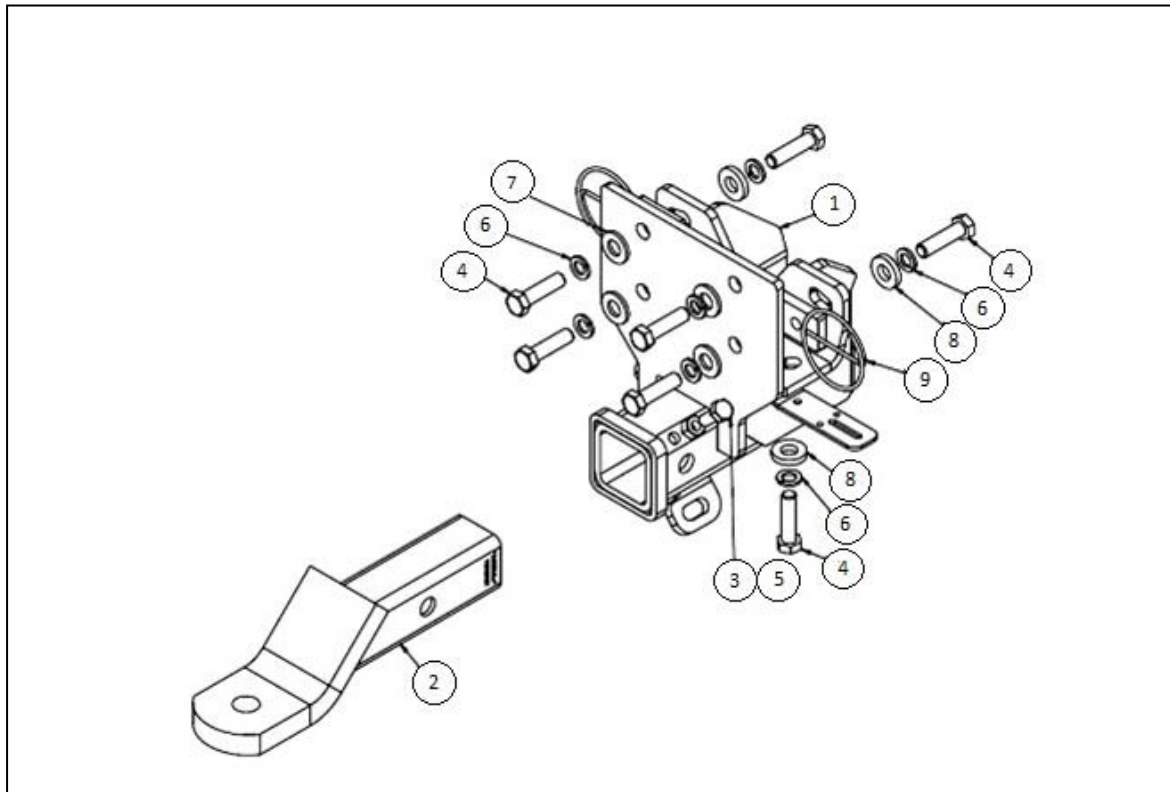
So as to avoid injury, when not towing it is suggested that the tongue, Pull Pin and R-clip are removed then stored in a safe, clean and dry place, away from excessive moisture.

Hitch Pull Pins and spring "R" clips are regularly checked for proper installation. Replace any worn or defective parts.

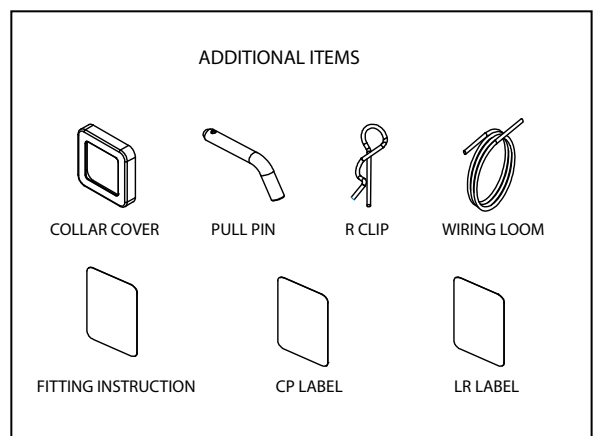
TRAILBOSS

Towbar Fitting Instructions
 To Suit **QT1118L**
 Part Number **TOYOTA FJ CRUISER 03/2011 ON**
 Rating **2250/225 kg**

PLACE THESE INSTRUCTIONS IN THE VEHICLE'S GLOVEBOX AFTER INSTALLATION IS COMPLETE



QTY	DESCRIPTION	ITEM NO.
1	WELDED ASSEMBLY	1
1	T.B.MOUNT	2
1	BOLT M10-1.50 x 25	3
8	SET SCREW M12-1.25x45mm GR 10.9 Z/P	4
1	M10x1.5 HEX NUT PC8	5
8	WASHER SPRING FT SEC M12x4.0x2.5mm Z/P	6
4	M14x28x3 Z/P FT WASHER	7
4	WASHER FT M12 (13.8mm)x28.5x5mm Z/P	8
2	M12x1.25 TAP PLATE WITH 300 WIRE	9



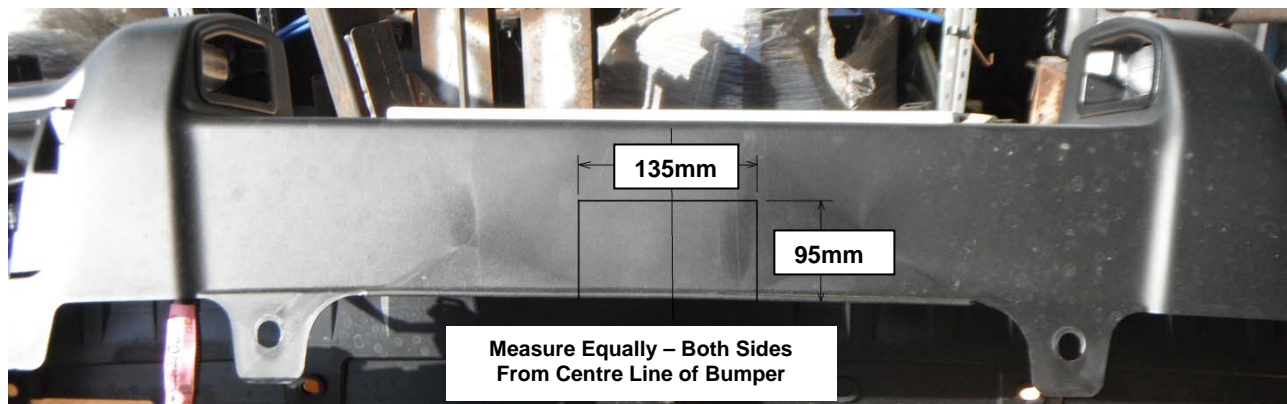
TRAILBOSS

Towbar Fitting Instructions
To Suit **QT1118L**
Part Number **TOYOTA FJ CRUISER 03/2011 ON**
Rating **2250/225 kg**

PLACE THESE INSTRUCTIONS IN THE VEHICLE'S GLOVEBOX AFTER INSTALLATION IS COMPLETE

INSTRUCTION:

1. Open tail gate (boot) to expose bumper Bolts. Remove all bolts from top section of bumper bar, across the face and sides. Remove all plastic trim buttons from underneath of bumper bar.
2. Flex bumper sides outwards, pull and slightly lift each side off clips. Disconnect any wiring connections. Remove bumper and bumper foam support from vehicle, place to the side.
3. Offer Towbar to the vehicle sub frame so that the holes in the towbar align with captive Nuts in the sub frame. Loosely fit M12 Bolts, Flat & Spring Washers to under side mount first .
4. Feed tapped plates on wire through access holes located on the front of the sub frame. Align tapped plates on wire with holes located on the rear of the Towbar & sub frame. Fasten loosely M12 bolts with Flat & Spring Washers into tapped plates.
5. Fasten underside Bolts step 1 semi tight. Fasten rear Bolts step 2 to torque listing. Fasten underside bolts step 1 to torque listing. Fit then fasten to torque listing M12 Bolts with Flat & Spring Washers to captive Nuts on vehicle sub frame.
6. Ensure that the wires on tapped plates are tucked away inside access hole, and then folded at ends. Do not break the wires off tapped plates after fitment. In case towbar has to be removed, the tapped plates can be removed easily.
7. Place masking tape over area of bumper, to be cut out so as not to damage bumper bar skin. Establish centre line of bumper, then mark out 67.5mm from each end of centre line = 135mm. Measure up 95mm from bottom edge of bumper bar. Cut out with suitable hacksaw or similar device, ensure cut is clean and free of burrs. Refit bumper bar in reverse order.
8. Fit additional items to Towbar, item list shown in diagram on page 2.





Wiring Loom Fitting Instructions
To Suit Toyota, FJ Cruiser, GS15R
Part Number 100865-WL

Wiring Loom Installation Instructions

Toyota, FJ Cruiser, GSJ15R
Part No: 100865-WL

Tail Harness Length Required: 1200mm
ECU Required: 04826

Wiring Loom Installation Time: Approx 30 Mins



Wiring Loom Fitting Instructions
To Suit Toyota, FJ Cruiser, GS15R
Part Number 100865-WL

1. In the luggage compartment, remove the RHS storage compartment.
2. Remove the RHS access panel covers.
3. Remove the RHS vehicle grommet located behind the lower access panel cover.
4. Feed the two un-housed patch terminal connectors and the 8-way 'BLUE' tail connector down through the grommet hole.
5. Ensure the trailer patch grommet is seated correctly and secure it in place using a cable tie (not supplied).
6. Route the trailer patch (P/No: 100865-WL) RHS tail light connectors towards the RHS tail light cavity.
7. Route the trailer patch ground ring terminal towards the front of the vehicle.
8. Route the trailer harness 3-way male connector towards the rear of the vehicle.
9. Locate and disconnect the RHS tail light 2-way and 3-way connectors.
10. Patch the trailer patch 2-way and 3-way connectors (1) in between the vehicle connectors and the RHS tail light assembly.

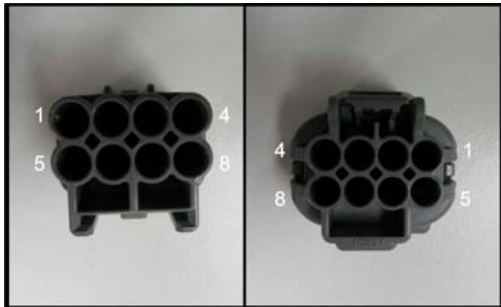
Note: It may be easier to patch into the vehicle reverse connector by first removing the reverse globe holder.

11. Connect the trailer harness ground ring terminal to vehicle ground point using the existing fastener.
12. Connect the trailer harness 12-way connector to the ECU (P/No: 04826).
13. Adhere the ECU to the vehicle sheet metal, in a suitable location.
14. Connect the trailer harness 3-way male connector to the vehicle 3-way female mating connector.

Wiring Loom Fitting Instructions To Suit Toyota, FJ Cruiser, GS15R Part Number 100865-WL

This Step for vehicle's with an 8-way tail light connector only.

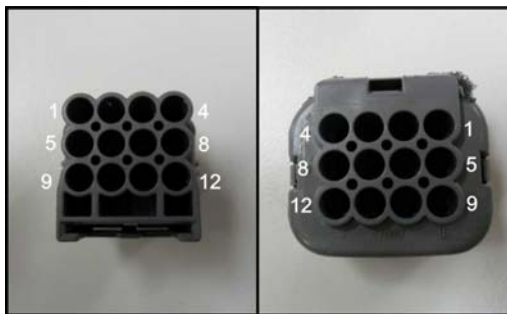
15. Following the table below, house the trailer harness terminals into their designated pins.
16. Secure the housed pins using the connector's secondary lock.



TERM.	COLOUR
1	GY (Pass through)
2	GY (Pass through)
3	GY (Pass through)
4	GY (Pass through)
5	GY (Pass through)
6	GN / BK (Label RHS)
7	GY (Pass through)
8	YL / BK (Label LHS)

This Step for vehicle's with a 12-way tail light connector only.

17. Following the table below, house the trailer harness terminals into their designated pins.
18. Secure the housed pins using the connector's secondary lock.



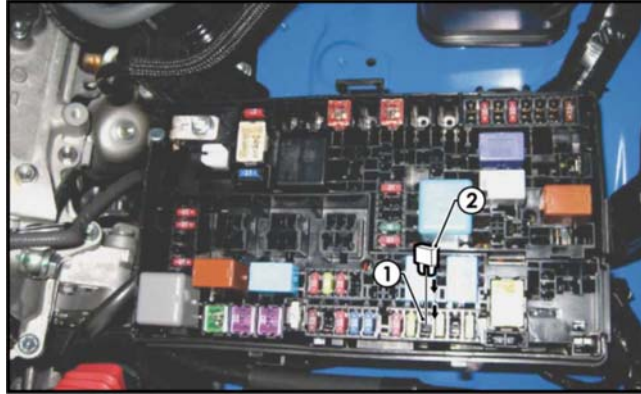
TERM.	COLOUR
1	GN / BK (Label RHS)
2	GY (Pass through)
3	YL / BK (Label LHS)
4	GY (Pass through)
5	GY (Pass through)
6	GY (Pass through)
7	GY (Pass through)
8	GY (Pass through)
9	GY (Pass through)
10	GY (Pass through)
11	GY (Pass through)
12	GY (Pass through)

19. Route the previously housed trailer patch 8-way or 12-way connectors towards the LHS of the vehicle.
20. From underneath the vehicle locate and disconnect the 8-way or 12-way vehicle connectors.
21. Connect the 8-way or 12-way trailer patch mating connectors in between the vehicle connectors.
22. Connect the trailer harness 8-way connector to the tail harness (tail length 1200mm) mating connector.
23. Waterproof the back of the 8-way connectors using silicone or electrical grease.
24. Mount the trailer socket to the towbar mounting bracket using M4 fasteners (not supplied).

TRAILBOSS

Wiring Loom Fitting Instructions To Suit Toyota, FJ Cruiser, GS15R Part Number 100865-WL

25. Inside the engine bay, locate the vacant 30-amp fuse slot (1) (Towing No.2). Refer to the back of the fuse cover lid to locate the slot.
26. Insert the supplied 30-amp fuse (2) into the vacant slot (1).



27. Test the trailer harness function using a light board or multi-meter.
28. Secure all harness using cable ties (not supplied).
29. Re-fit all removed parts and secure all fasteners, ensuring there are no squeaks or rattles.
30. Place the instructions in the glove box after fitment.



FITTING INSTRUCTIONS

Silent Anti-Rattle Hitch Pin (PR0001)

• These fitting instructions are supplied to ensure understanding of how the HITCH PIN should be fitted and used correctly.

• Once installed, we recommend **ALL** instructions are kept and placed in the vehicle glove box.

NOTE: Routine maintenance and inspection of the towbar & HITCH PIN is required. Regularly inspect for wear and check the tightness of the Hitch Pin. Follow instructions below to retighten the nut when necessary.

***Do not tow with your vehicle if the R CLIP or the HITCH PIN is loose or missing. Replacement parts are available from your Pro Series Distributor.**

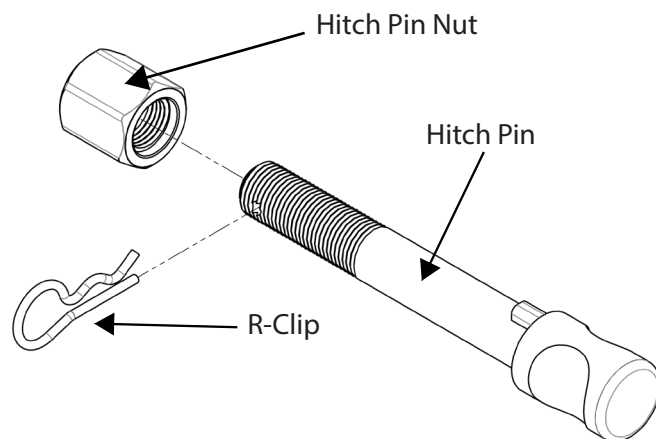


Fig 1. Silent Anti-Rattle Hitch Pin assembly

STEP 1

Insert Trailer Ball Mount (TBM) into towbar HITCHBOX, aligning hole in TBM SHANK with hole in HITCHBOX (Fig 2).

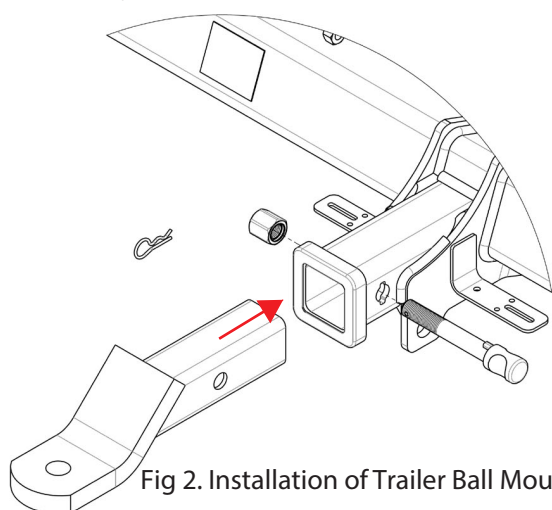


Fig 2. Installation of Trailer Ball Mount

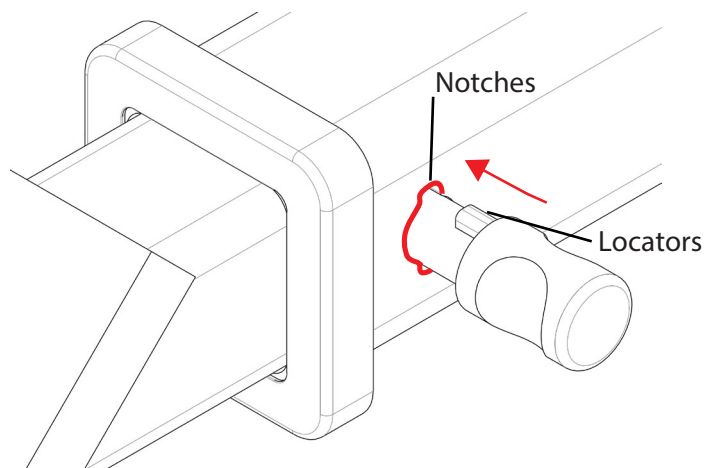


Fig 3. Silent Anti-Rattle Hitch Pin orientation

STEP 2

Insert HITCH PIN through hole in HITCHBOX and hole in TBM SHANK; ensure the LOCATORS are inserted into the NOTCHES in the HITCHBOX (Fig. 3).

STEP 3

Screw HITCH PIN NUT onto HITCH PIN ; tighten HITCH PIN NUT until finger tight, ensuring TBM is restrained from movement.

STEP 4

Tighten HITCH PIN NUT by turning nut a further 1/8th of a turn in the clockwise direction using a 24mm spanner (Fig. 4).

STEP 5

Install HITCH PIN R CLIP through the hole on the HITCH PIN (Fig. 1).

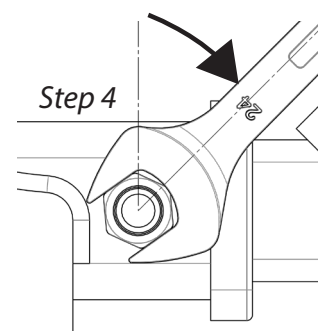


Fig 4. Tightening of Silent Anti-Rattle Hitch Pin Nut