



Towbar Fitting Instructions

To Suit **QT1132L**

Part Number **TOYOTA HILUX GUN SERIES SR5 UTE BODY TBM KIT**

Rating **3500/350 kg**

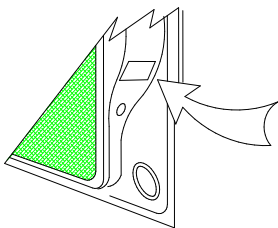
PLACE THESE INSTRUCTIONS IN THE VEHICLE'S GLOVEBOX AFTER INSTALLATION IS COMPLETED

WARNING:

1. Do not, drill, cut, weld or otherwise modify the tow bar.
2. If you are using electric welding on a motor vehicle, **always** check that the vehicle is not equipped with electronic engine or instrument management equipment. Failure to do so could **destroy** any onboard computers. If in doubt, check with the vehicle's manufacturer.
3. The high tensile fasteners supplied with this product were used to achieve the specified rating. If replacement is required ensure that fasteners of the same rating & quality are used. Contact an authorised **Trailboss** dealer if further information is required.
4. If TBM is used in inverted position tow ball may make contact with rear tailgate when lowered, which could cause damage.

General:

1. Ensure all hardware items have been included refer to assembly diagram.
2. It is recommended that the instructions are read through and completely understood before making any attempt to fit this product.
3. Be wary of any changes to vehicle designs or other accessories that may conflict with the installation of this product.
4. Before drilling ensure that the area is clear of fuel, electrical & other components.
5. All holes drilled into the body panels shall have all burrs & swarf removed then coated with a suitable rust preventative paint.
6. For vehicles that require the bumper to be cut. Ensure cut out area is in correct position on the vehicle prior to cutting the bumper.
7. The high tensile fasteners supplied with this product were used to achieve the specified rating. If replacement is required ensure that fasteners of the same rating & quality are used. Contact an authorized **Trailboss** dealer if further information is required.
8. Ensure that all hardware is fastened to torque list below check fasteners on regular basis.
9. Tow bar load rating sticker provided with this product shall be conspicuously located on inside rear end of the driver's door. **(See diagram below).**
10. Trailboss recommends that you check your tow ball to ensure that it complies with the Australian standards **AS 4177.2**.
11. **PLEASE NOTE:** It is advised to remove your LUG or TBM when not actually towing so as to produce a clear view of the vehicles registration plate if obscured, and to also provide maximum available departure angle



Place load rating sticker
inside driver's door here

FOR TRAILER TOWING PURPOSES ONLY
For towing capacity details please refer to vehicle owner's manual or to the manufacturer. Overloading can void your warranties.

RECOMMENDED ASSEMBLY TORQUE LISTING

<u>Diameter</u>	<u>Grade 8.8 Bolt</u>
M6	9.5 Nm
M8	21.7 Nm
M10	43.4 Nm
M12	77.3Nm
M14	146 Nm
M16	189.8 Nm

Tow bar Maintenance and Care.

Trailboss recommends that bolt torque's, as listed below, are routinely and regularly inspected and checked for correct tension. Replace any worn or defective parts.

We recommended to remove Tow Ball Mounts (TBM's, tongues or lugs) when not being used for any considerable length of time.

So as to avoid injury, when not towing it is suggested that the tongue, Pull Pin and R-clip are removed then stored in a safe, clean and dry place, away from excessive moisture.

Hitch Pull Pins and spring "R" clips are regularly checked for proper installation. Replace any worn or defective parts.

Cequent Customer Service

Ph: 1800 812 017 Fax: 03 9898 3299

Email: info@cequent.com.au

Post: PO Box 4050, Dandenong South VIC 3175



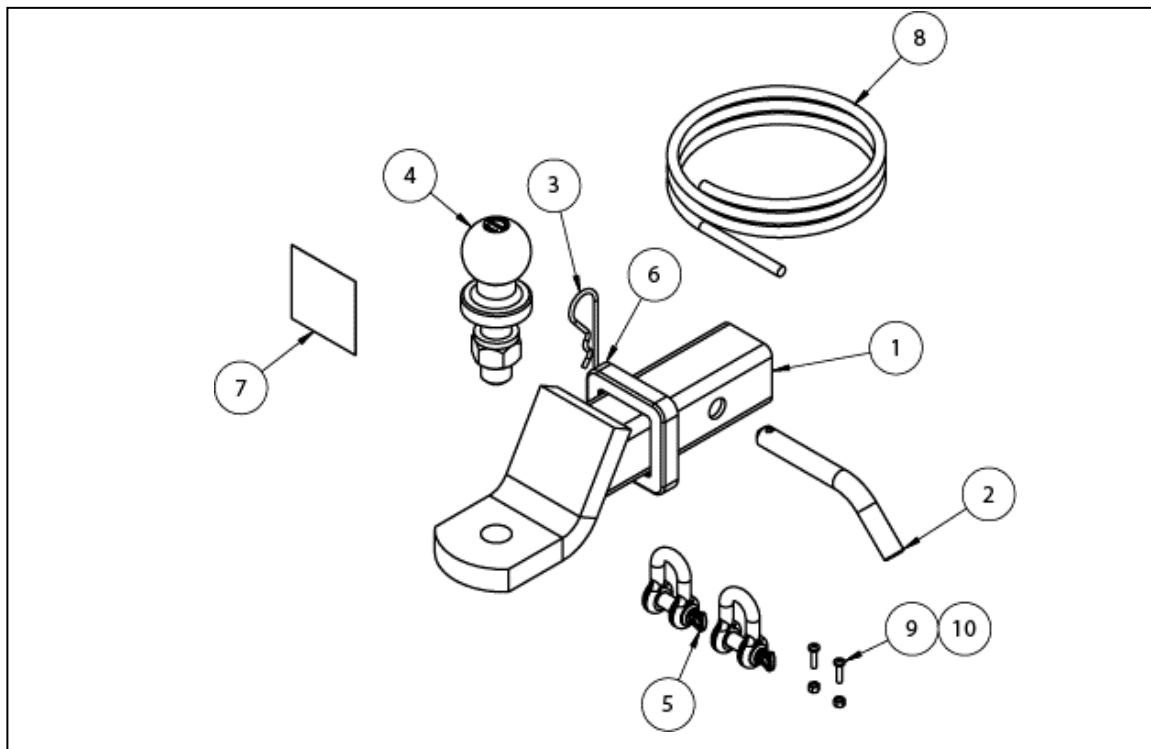
Towbar Fitting Instructions

To Suit **QT1132L**

Part Number **TOYOTA HILUX GUN SERIES SR5 UTE BODY TBM KIT**

Rating **3500/350 kg**

PLACE THESE INSTRUCTIONS IN THE VEHICLE'S GLOVEBOX AFTER INSTALLATION IS COMPLETED



ITEM	DESCRIPTION	QTY
1	CLASS 4 TBM	1
2	PULLPIN	1
3	R CLIP	1
4	TOWBALL 50MM	1
5	"D" SHACKLE 10MM	2
6	HITCH BOX COLLAR COVER	1
7	ACRYLIC COMPLIANCE PLATE	1
8	TOYOTA HILUX GUN MY15 TRAILER PATCH	1
9	SCREW PAN XR MTS M4-0.7 x 16 Z/P	2
10	NUT NYLOC M4-0.7 Z/P	2

Cequent Customer Service

Ph: 1800 812 017 Fax: 03 9898 3299

Email: info@cequent.com.au

Post: PO Box 4050, Dandenong South VIC 3175



Towbar Fitting Instructions

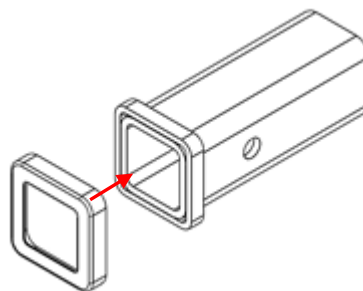
To Suit **QT1132L**

Part Number **TOYOTA HILUX GUN SERIES SR5 UTE BODY TBM KIT**

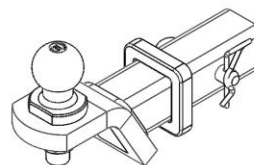
Rating **3500/350 kg**

PLACE THESE INSTRUCTIONS IN THE VEHICLE'S GLOVEBOX AFTER INSTALLATION IS COMPLETED

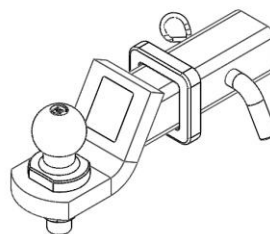
1. Remove the OEM hitch box collar cover and install the hitch box collar cover provided



2. For the 4 x 2 variants install the TBM with the tongue facing upwards.



3. For all other variants install the TBM with the tongue facing downwards.



Cequent Customer Service

Ph: 1800 812 017 Fax: 03 9898 3299

Email: info@cequent.com.au

Post: PO Box 4050, Dandenong South VIC 3175



Towbar Fitting Instructions

To Suit **QT1132L**

Part Number **TOYOTA HILUX GUN SERIES SR5 UTE BODY TBM KIT**

Rating **3500/350 kg**

PLACE THESE INSTRUCTIONS IN THE VEHICLE'S GLOVEBOX AFTER INSTALLATION IS COMPLETED

4. Unpeel the backing on the compliance label and stick it on the towbar adjacent to the genuine Toyota towbar label (make sure the surface is clean prior to placing label).

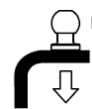
Note that the compliance plate is shown on the right to differentiate it from the door rating label which is placed inside the driver's door

TRAILBOSS®
TOWBARS

TONGUE INFORMATION (FOR TRAILER TOWING ONLY)

VEHICLE. **TOYOTA HILUX
GUN/GGN/TGN SERIES
UTILITY**

TONGUE PART No. **21351**



MAX TONGUE CAPACITY
TRAILER - **3500kg**
BALL LOAD - **350kg**
BATCH NO. XXXX

YOUR VEHICLE SPECIFIC RATING MAY DIFFER
FROM THE ABOVE MAXIMUM RATINGS. PLEASE
CHECK YOUR VEHICLE OWNERS HANDBOOK.

Cequent Customer Service

Ph: 1800 812 017 Fax: 03 9898 3299

Email: info@cequent.com.au

Post: PO Box 4050, Dandenong South VIC 3175