

# TRAILBOSS

## Towbar Fitting Instructions To Suit **TOYOTA LANDCRUISER 70 SERIES CL4** Part Number **QT1133L** Rating **3500/350 kg**

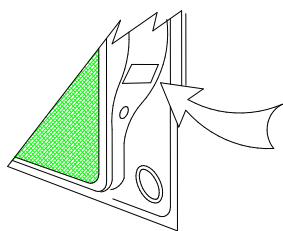
PLACE THESE INSTRUCTIONS IN THE VEHICLE'S GLOVEBOX AFTER INSTALLATION IS COMPLETED

### **WARNING:**

1. Do not, drill, cut, weld or otherwise modify the tow bar.
2. If you are using electric welding on a motor vehicle, **always** check that the vehicle is not equipped with electronic engine or instrument management equipment. Failure to do so could **destroy** any onboard computers. If in doubt, check with the vehicle's manufacturer.
3. The high tensile fasteners supplied with this product were used to achieve the specified rating. If replacement is required ensure that fasteners of the same rating & quality are used. Contact an authorised **Trailboss** dealer if further information is required.
4. If TBM is used in inverted position tow ball may make contact with rear tailgate when lowered, which could cause damage.

### **General:**

1. Ensure all hardware items have been included refer to assembly diagram.
2. It is recommended that the instructions are read through and completely understood before making any attempt to fit this product.
3. Be wary of any changes to vehicle designs or other accessories that may conflict with the installation of this product.
4. Before drilling ensure that the area is clear of fuel, electrical & other components.
5. All holes drilled into the body panels shall have all burrs & swarf removed then coated with a suitable rust preventative paint.
6. For vehicles that require the bumper to be cut. Ensure cut out area is in correct position on the vehicle prior to cutting the bumper.
7. The high tensile fasteners supplied with this product were used to achieve the specified rating. If replacement is required ensure that fasteners of the same rating & quality are used. Contact an authorized **Trailboss** dealer if further information is required.
8. Ensure that all hardware is fastened to torque list below check fasteners on regular basis.
9. Tow bar load rating sticker provided with this product shall be conspicuously located on inside rear end of the driver's door. **(See diagram below).**
10. Trailboss recommends that you check your tow ball to ensure that it complies with the Australian standards **AS 4177.2**.
11. **PLEASE NOTE:** It is advised to remove your LUG or TBM when not actually towing so as to produce a clear view of the vehicles registration plate if obscured, and to also provide maximum available departure angle



Place load rating sticker  
inside driver's door here

**FOR TRAILER TOWING PURPOSES ONLY**  
For towing capacity details please refer to vehicle owner's manual or to the manufacturer. Overloading can void your warranties.

### RECOMMENDED ASSEMBLY TORQUE LISTING

Diameter	Grade 8.8 Bolt
M6	9.5 Nm
M8	21.7 Nm
M10	43.4 Nm
M12	77.3Nm
M14	146 Nm
M16	189.8 Nm

### **Tow bar Maintenance and Care.**

Trailboss recommends that bolt torque's, as listed below, are routinely and regularly inspected and checked for correct tension. Replace any worn or defective parts.

We recommended to remove Tow Ball Mounts (TBM's, tongues or lugs) when not being used for any considerable length of time.

So as to avoid injury, when not towing it is suggested that the tongue, Pull Pin and R-clip are removed then stored in a safe, clean and dry place, away from excessive moisture.

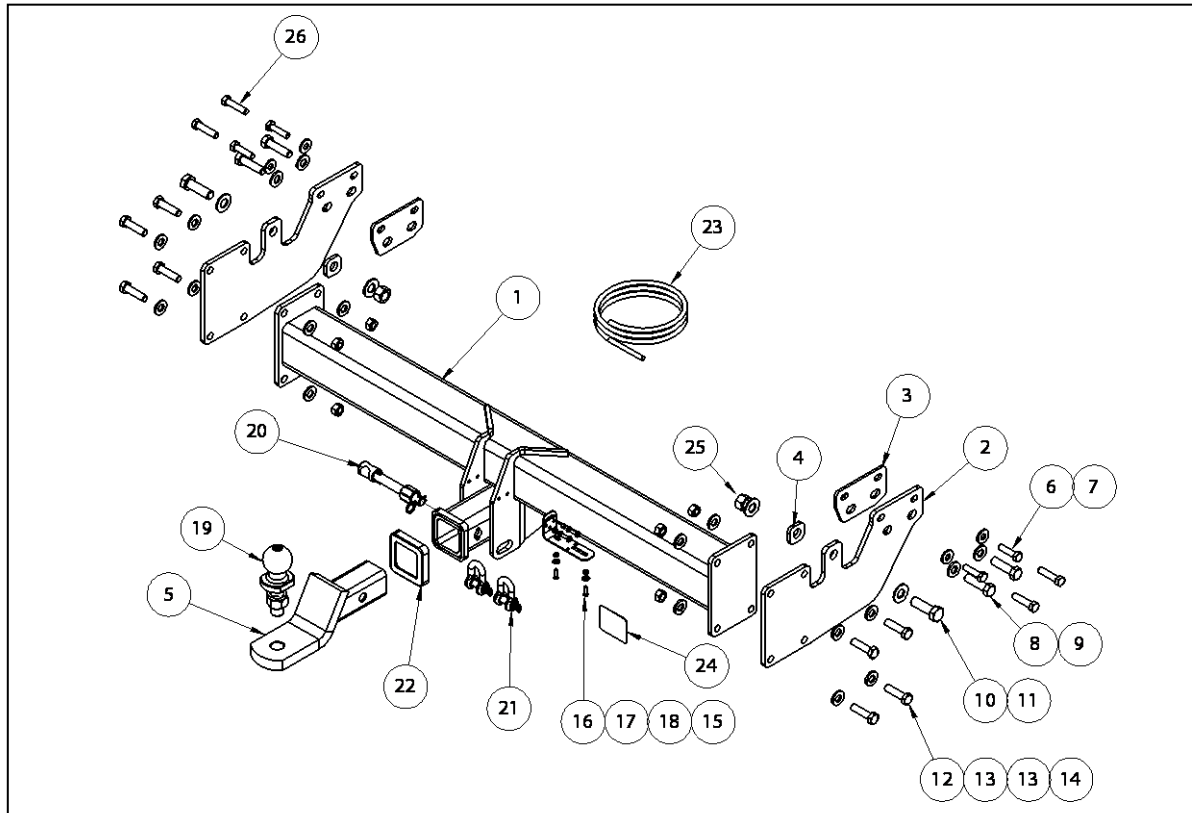
Hitch Pull Pins and spring "R" clips are regularly checked for proper installation. Replace any worn or defective parts.

**Cequent Customer Service**  
Ph: 1800 812 017 Fax: 03 9898 3299  
Email: info@cequent.com.au  
Post: PO Box 4050, Dandenong South VIC 3175

# TRAILBOSS

Towbar Fitting Instructions  
 To Suit **TOYOTA LANDCRUISER 70 SERIES CL4**  
 Part Number **QT1133L**  
 Rating **3500/350 kg**

PLACE THESE INSTRUCTIONS IN THE VEHICLE'S GLOVEBOX AFTER INSTALLATION IS COMPLETED



ITEM	DESCRIPTION	QTY
1	TOWBAR WELDED ASSEMBLY	1
2	SIDE ARM	2
3	FORWARD SPACER PLATE	2
4	REAR SPACER PLATE	2
5	CLASS 4 TBM	1
6	BOLT M10x1.25x40	4
7	WASHER FT M10x25.4x3	4
8	BOLT HEX HD M14-1.5x50MM Z/P	4
9	FT WASHER M14x28x3 Z/P	4
10	BOLT M16x1.5x50	2
11	FLAT WASHER M16x33.5x2.5 Z/P	4
12	SET SCREW M12x45x1.25P	8
13	WASHER FLAT 1/2"x1 1/8"x1/8"	16

ITEM	DESCRIPTION	QTY
14	HEX NUT PC8 M12x1.25	8
15	UNIVERSAL PLUG BRACKET KIT	1
16	SCREW PAN XR MTS M4-0.7x16 Z/P	2
17	F/WASHER ZP 3/6x1/2	2
18	NUT NYLOC M4-0.7 Z/P	2
19	TOWBALL 50MM	1
20	SILENT HITCH PIN – SILVER	1
21	"D" SHACKLE 10MM	2
22	HITCH BOX COLLAR COVER	1
23	WIRING LOOM	1
24	ACRYLIC CP LABEL	1
25	HEXAGONAL NUT M16X1.5	2
26	SET SCREW HEX HD M10X45X1.5P	4

**Cequent Customer Service**  
 Ph: 1800 812 017 Fax: 03 9898 3299  
 Email: [info@cequent.com.au](mailto:info@cequent.com.au)  
 Post: PO Box 4050, Dandenong South VIC 3175

# TRAILBOSS

Towbar Fitting Instructions  
To Suit **TOYOTA LANDCRUISER 70 SERIES CL4**  
Part Number **QT1133L**  
Rating **3500/350 kg**

PLACE THESE INSTRUCTIONS IN THE VEHICLE'S GLOVEBOX AFTER INSTALLATION IS COMPLETED

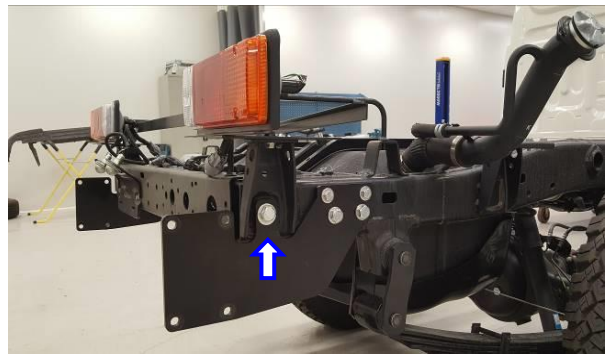
1. Remove and retain 2 x screws securing rear section of exhaust to exhaust mount.

This is to allow for greater tool access for installation of towbar.

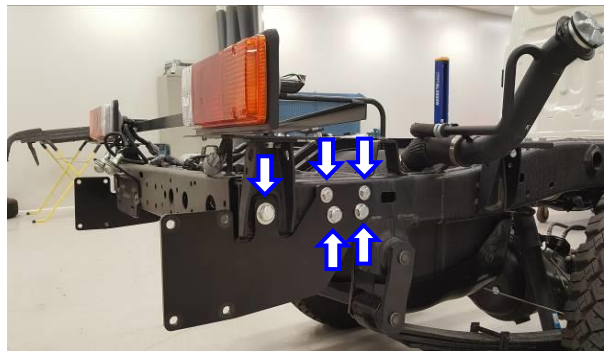


FOR DUAL CAB MODEL.

2. Using the side arm as a template for the rear chassis mount, mark off and drill a Ø16.5mm hole in the chassis.
  3. Spray with rust inhibitor.
- Repeat steps 2-3 for opposite side of vehicle.



4. Loosely secure side arm and forward spacer plate to upper holes on outside face of chassis rail using **2 x M10x1.25 bolts (Single cab)** or **2 x M10x1.5 (Dual cab)**, comp006Cete with 1 x flat washer per bolt.
  5. Loosely secure side arm and forward spacer plate to lower holes on outside face of chassis rail using 2 x M14 bolts, complete with 1 x flat washer per bolt.
  6. Loosely secure side arm and rear spacer plate to tray mounting point using 1 x M16 screw, complete with 1 x flat washer.  
For the **Dual cab** complete the fitment with the additional of 1 x flat washer and 1 x M16 nut.
- Repeat steps 4-6 for opposite side of vehicle.



**Cequent Customer Service**  
Ph: 1800 812 017 Fax: 03 9898 3299  
Email: [info@cequent.com.au](mailto:info@cequent.com.au)  
Post: PO Box 4050, Dandenong South VIC 3175

# TRAILBOSS

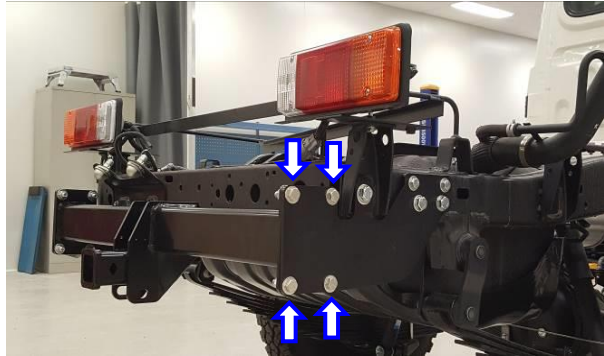
Towbar Fitting Instructions  
To Suit **TOYOTA LANDCRUISER 70 SERIES CL4**  
Part Number **QT1133L**  
Rating **3500/350 kg**

PLACE THESE INSTRUCTIONS IN THE VEHICLE'S GLOVEBOX AFTER INSTALLATION IS COMPLETED

7. Loosely secure towbar welded assembly to side arms using 8 x M12 hex head screws (4 per side), complete with 2 x flat washers and 1 x M12 nut per screw.

8. Tighten all fasteners to torques listed below:

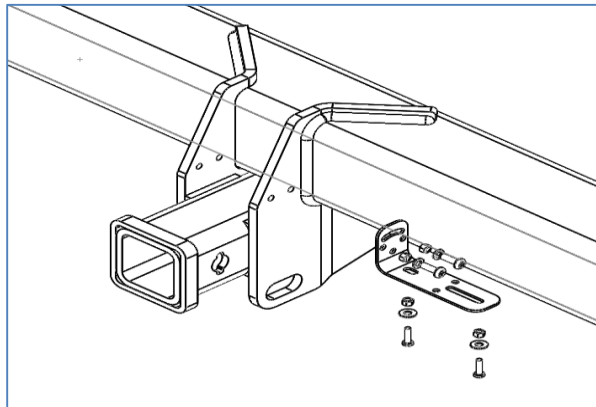
<b>M10:</b>	<b>68N.m</b>
<b>M12:</b>	<b>125N.m</b>
<b>M14:</b>	<b>140N.m</b>
<b>M16:</b>	<b>209N.m</b>



9. Secure plug bracket to centre section of towbar using 2 x M5 screws, complete with 1 x M5 flat washer and 1 x M5 nyloc nut per screw.

10. Secure trailer plug to plug bracket using 2 x M4 screws, complete with 1 x M4 flat washer and 1 x M4 nyloc nut per screw.

11. Reattach rear section of exhaust to exhaust mount using the 2 screws removed.



**Cequent Customer Service**  
Ph: 1800 812 017 Fax: 03 9898 3299  
Email: [info@cequent.com.au](mailto:info@cequent.com.au)  
Post: PO Box 4050, Dandenong South VIC 3175



Wiring Loom Fitting Instructions  
To Suit Toyota Landcruiser 70 Series  
Part Number 100038-WL

## Wiring Loom Installation Instructions

Toyota Landcruiser 70 Series  
(January 2000 – Onwards)  
Part No: 100038-WL

Tail Harness Length Required: 1200mm  
RPA Override Switch Part No: 04848 (If Fitted)

Wiring Loom Installation Time: Approx 30 Mins



Wiring Loom Fitting Instructions  
To Suit Toyota Landcruiser 70 Series  
Part Number 100038-WL

1. In the engine bay, locate the vehicle battery.
2. Route the Power Harness (04825) from the battery, along the firewall and down towards the vehicle undercarriage.

**Note: Do not connect the Power Harness to the battery at this point.**

3. From the vehicle undercarriage, locate the Power Harness.
4. Route the Power Harness along the RHS chassis rail and towards the rear of the vehicle.

**Note: The Power Harness can be routed along either the RHS or the LHS chassis rail. The RHS is preferable as the vehicle exhaust is located on the LHS.**

**Note: When routing any harnesses underneath the vehicle, ensure to avoid all moving parts, sources of heat and sharp objects.**

5. Continue routing the Power Harness along the top of the RHS chassis rail and towards the rear of the vehicle.
6. Following the path of the hydraulic lines, route the Power Harness along the RHS chassis rail and towards the rear of the vehicle.
7. Keeping clear of the rear suspension components, continue routing the Power Harness along the RHS chassis rail and towards the rear of the vehicle.
8. Route the Power Harness along the rear of the vehicle and towards the vehicle 8-way breakout connector.
9. On the rear of the LHS chassis rail, locate the 8-way vehicle breakout connector.
10. Remove the blanking plug from the vehicle breakout connector.
11. Connect the Trailer Harness (P/No: 100038-WL) 8-way connector to the vehicle 8-way breakout connector.
12. Connect the Power Harness 1-way connector to the Trailer Harness 1-way mating connector.
13. Mount the trailer socket to the towbar mounting bracket using M4 fasteners (not supplied).
14. Route the Tail Harness (tail length 1200mm) across the towbar and towards the LHS of the vehicle.
15. Connect the Tail Harness 8-way connector to the Trailer Harness mating 8-way connector.
16. Waterproof the connectors by applying electrical grease or silicone to the back of each connector.



Wiring Loom Fitting Instructions  
To Suit Toyota Landcruiser 70 Series  
Part Number 100038-WL

17. Test the Trailer socket using a light board or multi-meter.
18. Secure the all harnesses using cables ties (not supplied).
19. Re-fit all removed parts and secure all fasteners.
20. Place the instructions in the glove box after fitment.





# FITTING INSTRUCTIONS

## Silent Anti-Rattle Hitch Pin (PR0001)

• These fitting instructions are supplied to ensure understanding of how the HITCH PIN should be fitted and used correctly.

• Once installed, we recommend **ALL** instructions are kept and placed in the vehicle glove box.

**NOTE: Routine maintenance and inspection of the towbar & HITCH PIN is required. Regularly inspect for wear and check the tightness of the Hitch Pin. Follow instructions below to retighten the nut when necessary.**

**\*Do not tow with your vehicle if the R CLIP or the HITCH PIN is loose or missing. Replacement parts are available from your Pro Series Distributor.**

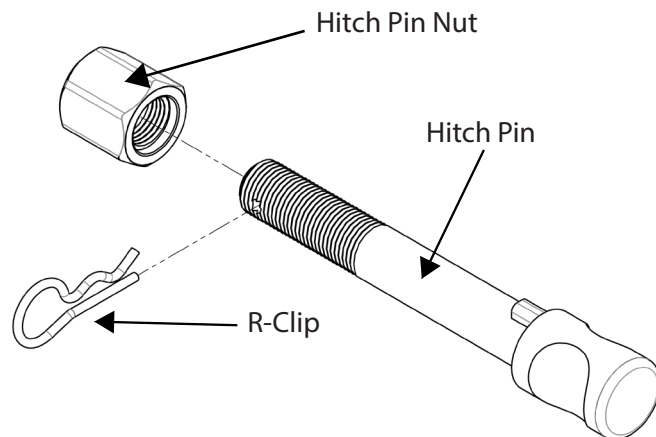


Fig 1. Silent Anti-Rattle Hitch Pin assembly

### STEP 1

Insert Trailer Ball Mount (TBM) into towbar HITCHBOX, aligning hole in TBM SHANK with hole in HITCHBOX (Fig 2).

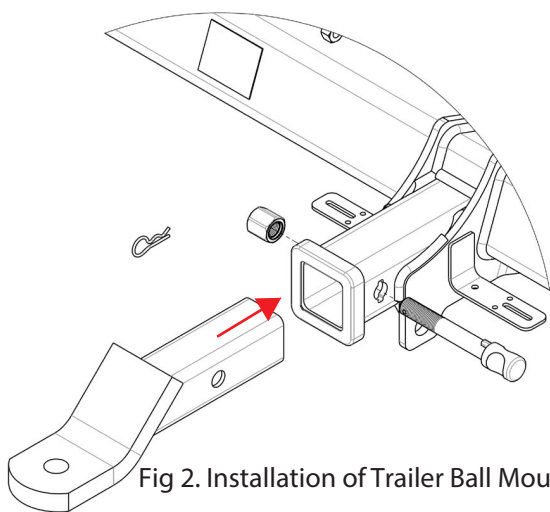


Fig 2. Installation of Trailer Ball Mount

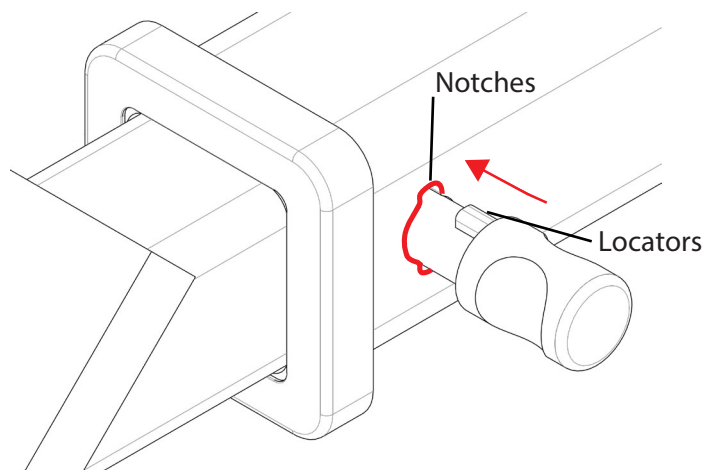


Fig 3. Silent Anti-Rattle Hitch Pin orientation

### STEP 2

Insert HITCH PIN through hole in HITCHBOX and hole in TBM SHANK; ensure the LOCATORS are inserted into the NOTCHES in the HITCHBOX (Fig. 3).

### STEP 3

Screw HITCH PIN NUT onto HITCH PIN ; tighten HITCH PIN NUT until finger tight, ensuring TBM is restrained from movement.

### STEP 4

Tighten HITCH PIN NUT by turning nut a further 1/8th of a turn in the clockwise direction using a 24mm spanner (Fig. 4).

### STEP 5

Install HITCH PIN R CLIP through the hole on the HITCH PIN (Fig. 1).

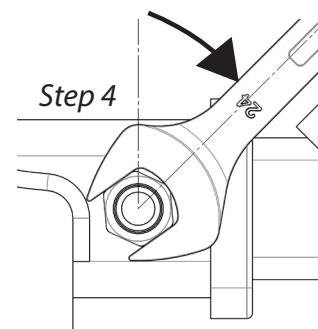


Fig 4. Tightening of Silent Anti-Rattle Hitch Pin Nut