

TRAILBOSS

Towbar Fitting Instructions To Suit **TOYOTA PRADO 17 CL4** Part Number **QT1134L** Rating **3000/300 kg**

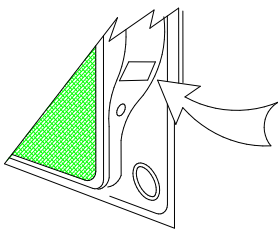
PLACE THESE INSTRUCTIONS IN THE VEHICLE'S GLOVEBOX AFTER INSTALLATION IS COMPLETED

WARNING:

1. Do not, drill, cut, weld or otherwise modify the tow bar.
2. If you are using electric welding on a motor vehicle, **always** check that the vehicle is not equipped with electronic engine or instrument management equipment. Failure to do so could **destroy** any onboard computers. If in doubt, check with the vehicle's manufacturer.
3. The high tensile fasteners supplied with this product were used to achieve the specified rating. If replacement is required ensure that fasteners of the same rating & quality are used. Contact an authorised **Trailboss** dealer if further information is required.
4. If TBM is used in inverted position tow ball may make contact with rear tailgate when lowered, which could cause damage.

General:

1. Ensure all hardware items have been included refer to assembly diagram.
2. It is recommended that the instructions are read through and completely understood before making any attempt to fit this product.
3. Be wary of any changes to vehicle designs or other accessories that may conflict with the installation of this product.
4. Before drilling ensure that the area is clear of fuel, electrical & other components.
5. All holes drilled into the body panels shall have all burrs & swarf removed then coated with a suitable rust preventative paint.
6. For vehicles that require the bumper to be cut. Ensure cut out area is in correct position on the vehicle prior to cutting the bumper.
7. The high tensile fasteners supplied with this product were used to achieve the specified rating. If replacement is required ensure that fasteners of the same rating & quality are used. Contact an authorized **Trailboss** dealer if further information is required.
8. Ensure that all hardware is fastened to torque list below check fasteners on regular basis.
9. Tow bar load rating sticker provided with this product shall be conspicuously located on inside rear end of the driver's door. **(See diagram below).**
10. Trailboss recommends that you check your tow ball to ensure that it complies with the Australian standards **AS 4177.2**.
11. **PLEASE NOTE:** It is advised to remove your LUG or TBM when not actually towing so as to produce a clear view of the vehicles registration plate if obscured, and to also provide maximum available departure angle



Place load rating sticker
inside driver's door here

FOR TRAILER TOWING PURPOSES ONLY
For towing capacity details please refer to vehicle owner's manual or to the manufacturer. Overloading can void your warranty.

RECOMMENDED ASSEMBLY TORQUE LISTING

Diameter	Grade 8.8 Bolt
M6	9.5 Nm
M8	21.7 Nm
M10	43.4 Nm
M12	77.3Nm
M14	146 Nm

Tow bar Maintenance and Care.

Trailboss recommends that bolt torque's, as listed below, are routinely and regularly inspected and checked for correct tension. Replace any worn or defective parts.

We recommended to remove Tow Ball Mounts (TBM's, tongues or lugs) when not being used for any considerable length of time. So as to avoid injury, when not towing it is suggested that the tongue, Pull Pin and R-clip are removed then stored in a safe, clean and dry place, away from excessive moisture.

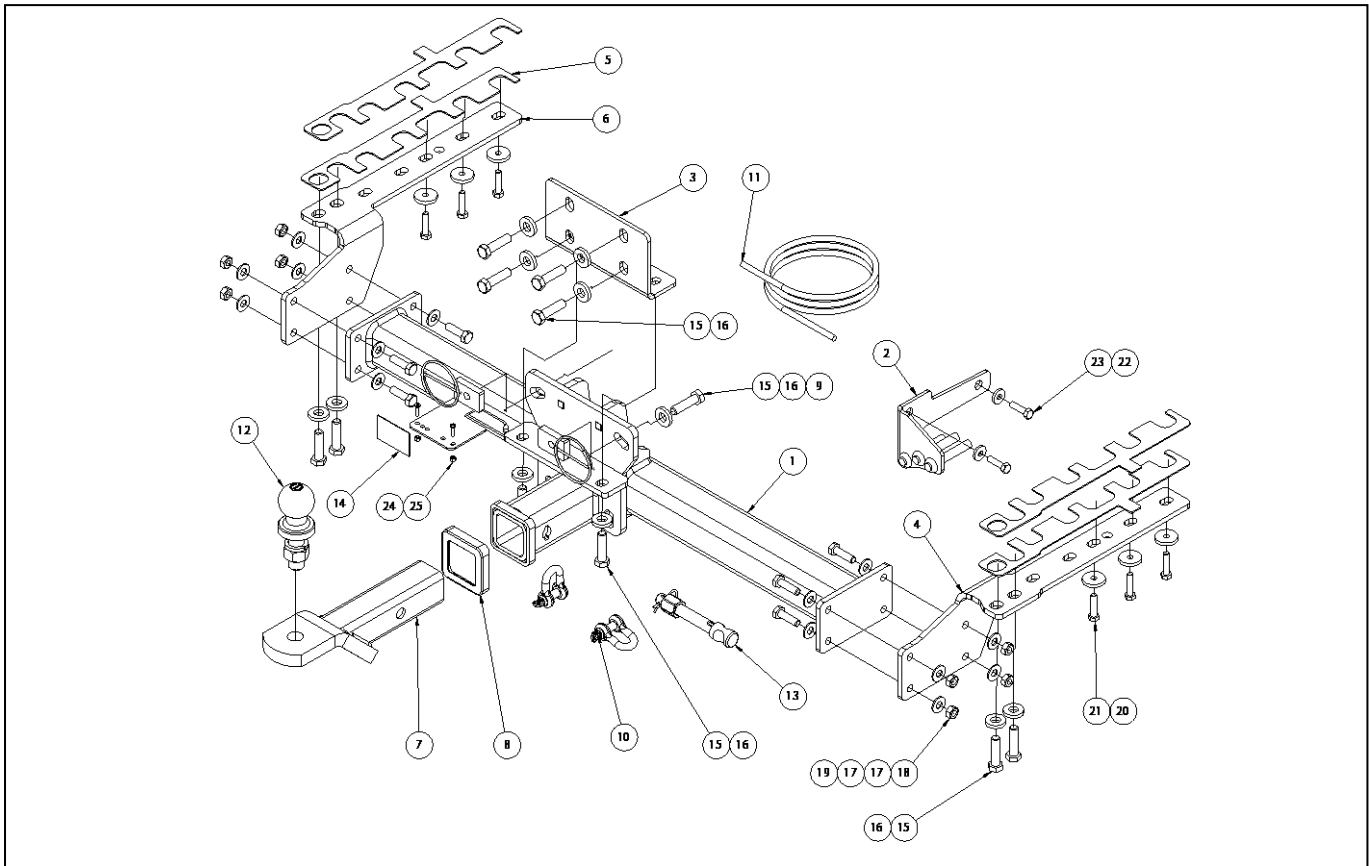
Hitch Pull Pins and spring "R" clips are regularly checked for proper installation. Replace any worn or defective parts.

Cequent Customer Service
Ph: 1800 812 017 Fax: 03 9898 3299
Email: info@cequent.com.au
Post: PO Box 4050, Dandenong South VIC 3175

TRAILBOSS

Towbar Fitting Instructions
 To Suit **TOYOTA PRADO 17 CL4**
 Part Number **QT1134L**
 Rating **3000/300 kg**

PLACE THESE INSTRUCTIONS IN THE VEHICLE'S GLOVEBOX AFTER INSTALLATION IS COMPLETED



ITEM	DESCRIPTION	QTY
1	TOYOTA PRADO 17 WELDED ASSY	1
2	EXHAUST BRACKET	1
3	CLAMPING PLATE	1
4	SIDEARM RHS	1
5	SPACER PLATE	4
6	SIDEARM LHS	1
7	TRAILER BALL MOUNT	1
8	HITCH BOX COLLAR COVER	1
9	M12x1.25 TAP PLATE WITH 300 WIRE	2
10	10MM "D" SHACKLE	2
11	WIRING LOOM	1
12	TOWBALL 50MM CHROME 3500KG PRO	1
13	ANTI RATTLE PULL PIN ASSY SILVER	1

ITEM	DESCRIPTION	QTY
14	ACRYLIC COMPLIANCE PLATE	1
15	SET SCREW HEX HD M12x45x1.25P	12
16	WASHER FLAT M12x28.5x5	12
17	WASHER FLAT M10x23x2 Z/P	16
18	NUT HX M10-1.25 Z/P	8
19	SET SCREW HEX HD M10x35x1.25P	8
20	WASHER FT (M8) 8.1x32x5 MM Z/P	6
21	BOLT HEX M8x35x1.25P	6
22	WASHER PLAIN M8x22x3	3
23	SETSCREW HEX HD M8x30x1.25P	2
24	SCREW PAN HD M4x16x0.7P	2
25	NUT NYLON LOCK HEX HD M4x0.7P	2

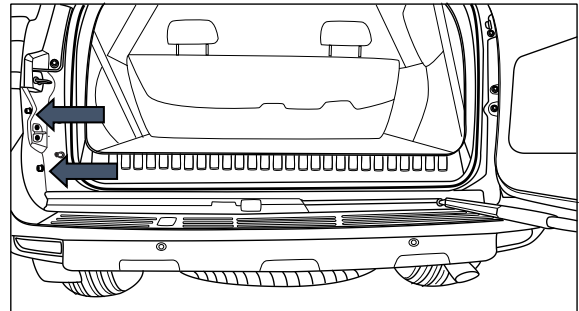
Cequent Customer Service
 Ph: 1800 812 017 Fax: 03 9898 3299
 Email: info@cequent.com.au
 Post: PO Box 4050, Dandenong South VIC 3175

TRAILBOSS

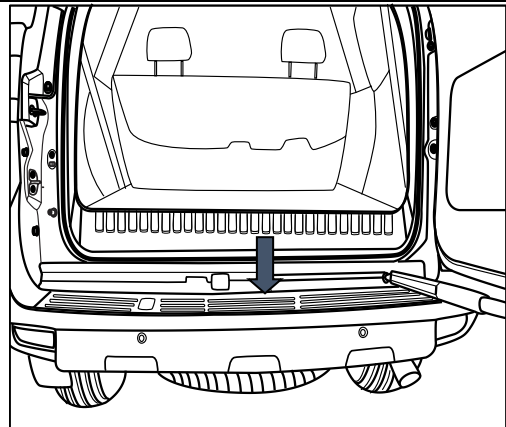
Towbar Fitting Instructions
To Suit **TOYOTA PRADO 17 CL4**
Part Number **QT1134L**
Rating **3000/300 kg**

PLACE THESE INSTRUCTIONS IN THE VEHICLE'S GLOVEBOX AFTER INSTALLATION IS COMPLETED

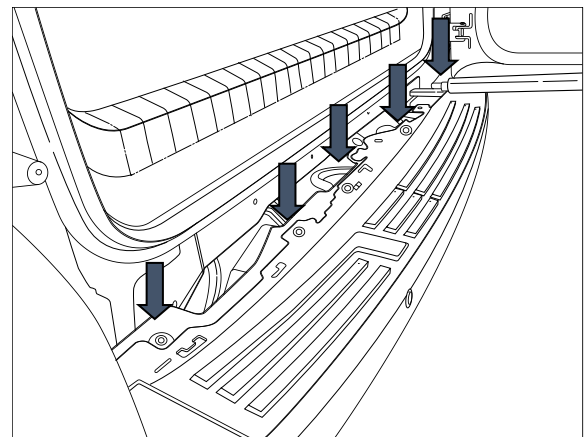
1. Release the tailgate to expose the rear cabin. Remove 2 x scrivenets located around boot opening.



2. Using a trim removal tool, carefully extract the rear garnish on top of the bumper.



3. With the bumper fully exposed, remove 5 x set screws located behind plastic trim.



Cequent Customer Service
Ph: 1800 812 017 Fax: 03 9898 3299
Email: info@cequent.com.au
Post: PO Box 4050, Dandenong South VIC 3175

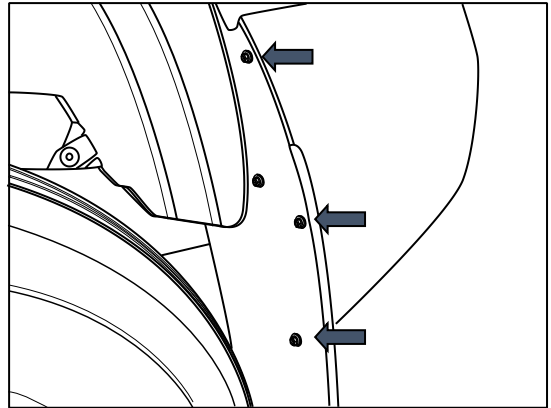


Towbar Fitting Instructions
To Suit **TOYOTA PRADO 17 CL4**
Part Number **QT1134L**
Rating **3000/300 kg**

PLACE THESE INSTRUCTIONS IN THE VEHICLE'S GLOVEBOX AFTER INSTALLATION IS COMPLETED

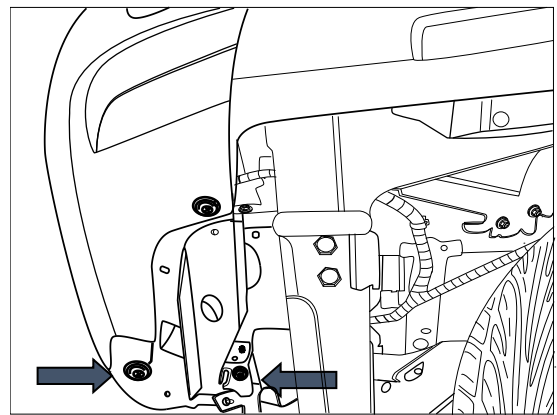
4. On the inside of the wheel arch, remove 1 x set screw and 2 x scrivers.

Repeat for opposite side.

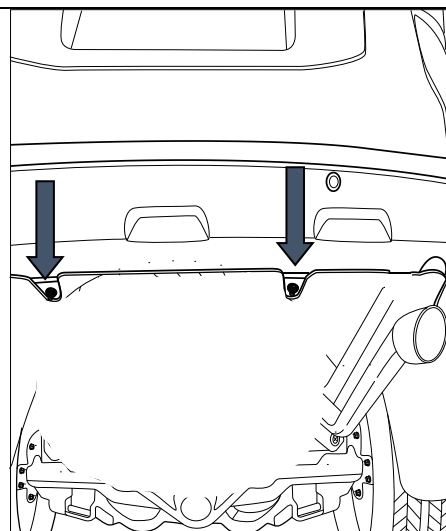


5. Remove 1 x screw and 1 x scrivers from underneath vehicle on the side.

Repeat for the opposite side.



6. Remove 2 x screws from rear bumper fascia lip on underside of vehicle.



Cequent Customer Service
Ph: 1800 812 017 Fax: 03 9898 3299
Email: info@cequent.com.au
Post: PO Box 4050, Dandenong South VIC 3175

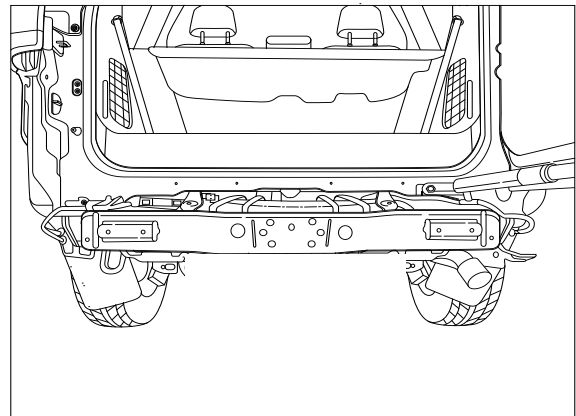


Towbar Fitting Instructions
To Suit **TOYOTA PRADO 17 CL4**
Part Number **QT1134L**
Rating **3000/300 kg**

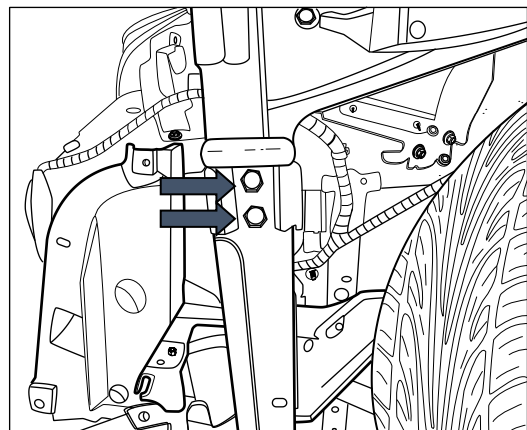
PLACE THESE INSTRUCTIONS IN THE VEHICLE'S GLOVEBOX AFTER INSTALLATION IS COMPLETED

7. Unclip wiring harness connectors on passenger side and reverse sensors if fitted.
Repeat for opposite side.

8. Using two people, carefully unclip the bumper assembly and set aside.



9. On the passenger side remove 2 x Set screws and discard the factory shipping hook.



Cequent Customer Service
Ph: 1800 812 017 Fax: 03 9898 3299
Email: info@cequent.com.au
Post: PO Box 4050, Dandenong South VIC 3175

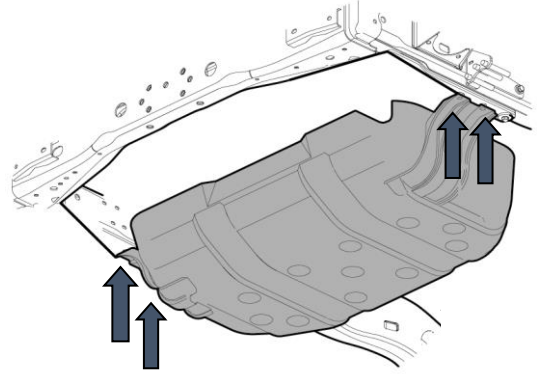
TRAILBOSS

Towbar Fitting Instructions
To Suit **TOYOTA PRADO 17 CL4**
Part Number **QT1134L**
Rating **3000/300 kg**

PLACE THESE INSTRUCTIONS IN THE VEHICLE'S GLOVEBOX AFTER INSTALLATION IS COMPLETED

10. Remove 4 x bolts securing fuel protector (if equipped) from underside of vehicle as shown and discard bolts.

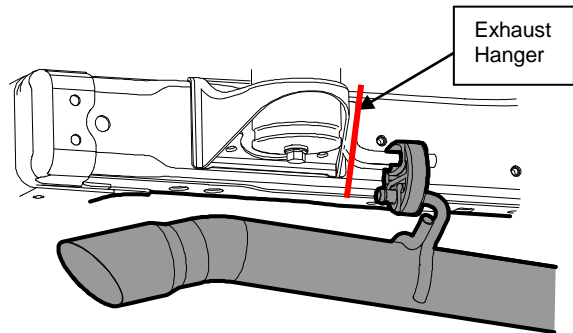
Fuel protector will remain supported by a 5th bolt towards the front of vehicle. Leave this bolt and provide additional support if required.



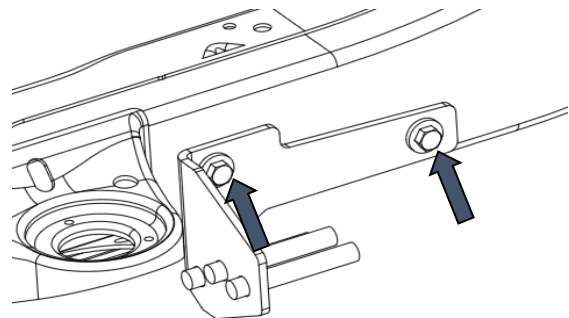
11. Lower exhaust by unhooking from rear most hanger. Lower and support exhaust.

Using an appropriate metal cutting tool, carefully cut the rear most hangers as shown.

12. Apply rust inhibitor to all cut areas.



13. Loosely secure the exhaust hanger bracket to the RH chassis rail with 2 x M8 x 35mm bolts complete with 1 x M8 washer per bolt.



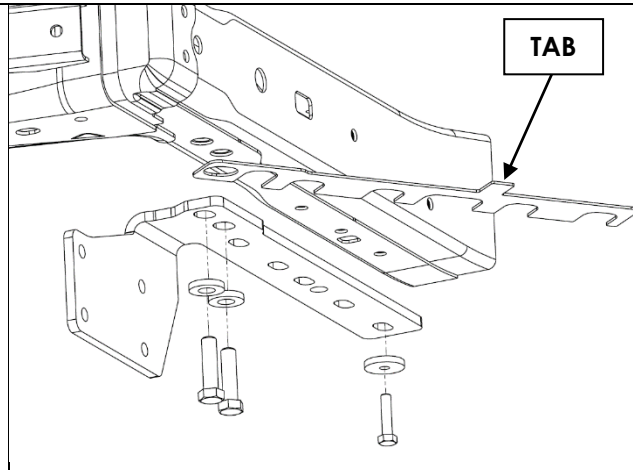
Cequent Customer Service
Ph: 1800 812 017 Fax: 03 9898 3299
Email: info@cequent.com.au
Post: PO Box 4050, Dandenong South VIC 3175

Towbar Fitting Instructions
 To Suit **TOYOTA PRADO 17 CL4**
 Part Number **QT1134L**
 Rating **3000/300 kg**

PLACE THESE INSTRUCTIONS IN THE VEHICLE'S GLOVEBOX AFTER INSTALLATION IS COMPLETED

14. Loosely secure RH Sidearm to chassis rail with 2 x M12 x 45mm bolts complete with 1 x M12 washer per bolt at rear most holes.

Repeat for LHS.



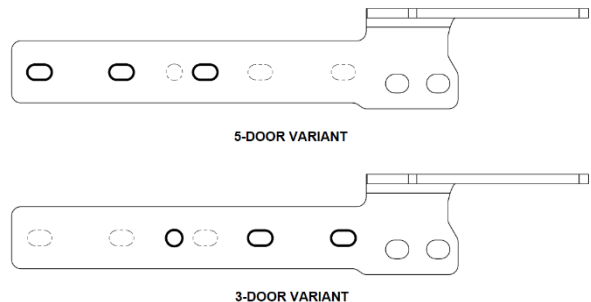
15. 5-Door Variants:

Secure most forward hole in chassis rail with 1 x M8 x 35mm bolt complete with 1 x M8 washer.

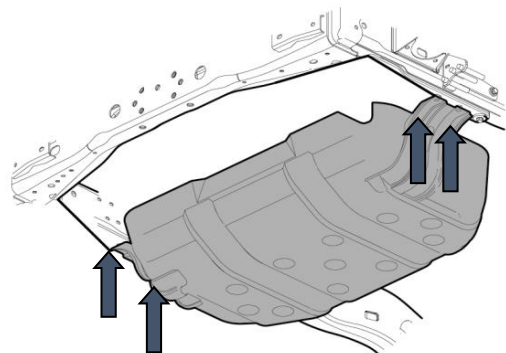
3-Door Variants:

Secure 3 x mounting points highlighted to chassis rail with 3 x M8 x 35mm bolts complete with 1 x M8 washer per bolt.

Use supplied spacer plates as required to ensure holes align in Step 19. To install spacer plate, remove rear most bolt on side arm, insert spacer and reinstall bolt. Swing spacer, using tab, in between side arm and bottom of chassis rail.



16. Re-fit fuel tank protector (if equipped) to underside of vehicle and secure to chassis rail with 4 x M8 x 35mm bolts (2 per side) complete with 1 x M8 washer per bolt.



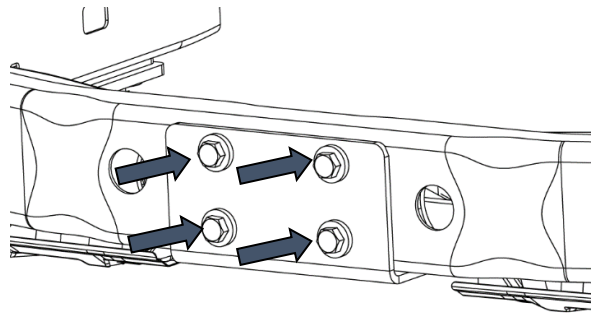
Cequent Customer Service
 Ph: 1800 812 017 Fax: 03 9898 3299
 Email: info@cequent.com.au
 Post: PO Box 4050, Dandenong South VIC 3175



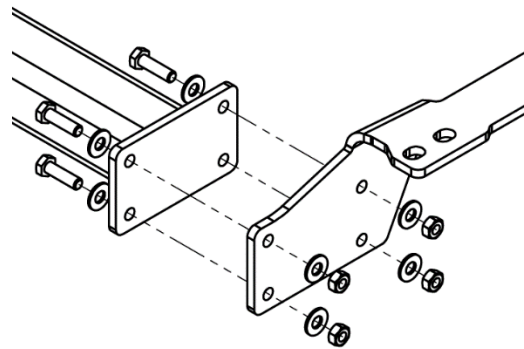
Towbar Fitting Instructions
To Suit **TOYOTA PRADO 17 CL4**
Part Number **QT1134L**
Rating **3000/300 kg**

PLACE THESE INSTRUCTIONS IN THE VEHICLE'S GLOVEBOX AFTER INSTALLATION IS COMPLETED

17. Loosely secure the front plate to vehicle with 4 x M12 x 45mm bolts.

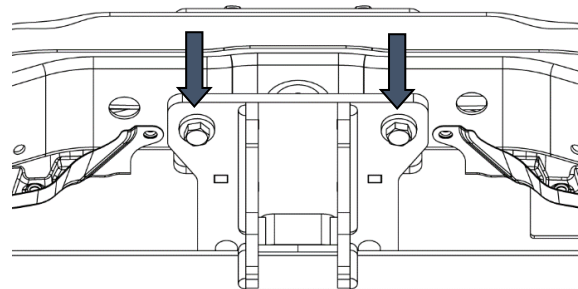


18. Lift towbar to align with side arms and loosely secure with 8 x M10 x 35mm bolts (4 per side) complete with 2 x M10 washers and 1 x M10 nut per bolt.



19. Loosely secure towbar to rear side of vehicle chassis with 2 x M12 x 45mm bolts by inserting tapped plate on wire inside chassis rail. Use 1 x M12 washer per bolt.

If bar is too high, causing hole misalignment, add spacers as per Step 15.



Cequent Customer Service
Ph: 1800 812 017 Fax: 03 9898 3299
Email: info@cequent.com.au
Post: PO Box 4050, Dandenong South VIC 3175



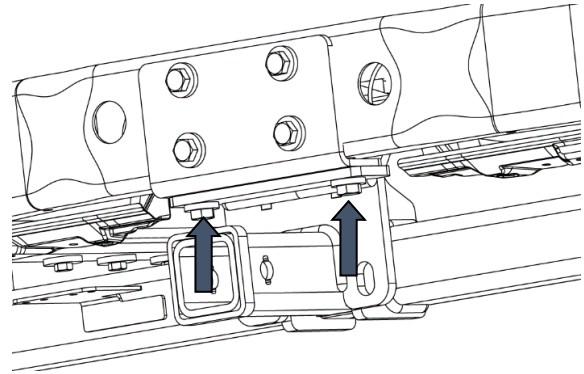
Towbar Fitting Instructions
To Suit **TOYOTA PRADO 17 CL4**
Part Number **QT1134L**
Rating **3000/300 kg**

PLACE THESE INSTRUCTIONS IN THE VEHICLE'S GLOVEBOX AFTER INSTALLATION IS COMPLETED

20. Secure the front plate to the towbar with 2 x M12 x 45mm bolts complete with 1 x M12 washer per bolt.

21. Torque all bolts to the torques listed below:

M12: 125 N.m
M10: 48 N.m
M8: 22 N.m



22. Reassemble the bumper bar assembly in the reverse order of removal, ensuring exhaust is mounted to newly fitted hanger.

Cequent Customer Service
Ph: 1800 812 017 Fax: 03 9898 3299
Email: info@cequent.com.au
Post: PO Box 4050, Dandenong South VIC 3175



Wiring Loom Fitting Instructions
To Suit Toyota Prado Pre-MY14 and Toyota Prado MY14
Part Number 100210-WL

Wiring Loom Installation Instructions

Toyota Prado Pre-MY14 and Toyota Prado MY14
Part No: 100210-WL

Tail Harness Length Required: 1200mm
ECU Required: 04826

Wiring Loom Installation Time: Approx 20 Mins



Wiring Loom Fitting Instructions
To Suit Toyota Prado Pre-MY14 and Toyota Prado MY14
Part Number 100210-WL

1. Remove all the required trims to gain access to the LHS tail light connectors and the LHS rear quarter area of the vehicle.
2. Connect the Trailer Patch Harness (P/No:100210-WL) to the vehicle breakout connector.
3. Route the Trailer Patch Harness (P/No: 100210-WL) along the rear of the luggage compartment and towards the rear RHS quarter of the vehicle.
4. Connect the Trailer Patch Harness to the ECU module (P/No: 04826).
5. Adhere the ECU module to the interior of the cavity in the area below the LHS tail light.
6. Secure the earth ring terminal to the earthing point located above the LHS tail light cavity opening.
7. Locate the main vehicle harness grommet sitting in the floor of the LHS rear quarter area. Drill a Ø30mm hole to the LHS of the grommet just in front of the vehicle clipping point. File back any rough edges and spray the hole with a rust inhibitor.
8. Secure the Tail Harness (Tail length 1200mm) trailer socket (1) to the towbar mounting bracket using M4 fasteners (not supplied).
9. Route the Tail Harness over to the previously drilled hole and feed the connector into the vehicle.
10. Adjust the harness grommet to the required position and secure grommet with a cable tie (not supplied) and then secure the grommet in place. Secure the harness to the towbar using cable ties (not supplied).
11. Connect the Tail Harness 8-way male connector to the Trailer Patch Harness female connector.
12. Test the Trailer socket using a light board or multi-meter.
13. Secure the all harnesses using cables ties (not supplied).
14. Refit all removed parts and secure all fasteners.
15. Place instructions in glove box after fitment.



FITTING INSTRUCTIONS

Silent Anti-Rattle Hitch Pin (PR0001)

• These fitting instructions are supplied to ensure understanding of how the HITCH PIN should be fitted and used correctly.

• Once installed, we recommend **ALL** instructions are kept and placed in the vehicle glove box.

NOTE: Routine maintenance and inspection of the towbar & HITCH PIN is required. Regularly inspect for wear and check the tightness of the Hitch Pin. Follow instructions below to retighten the nut when necessary.

***Do not tow with your vehicle if the R CLIP or the HITCH PIN is loose or missing. Replacement parts are available from your Pro Series Distributor.**

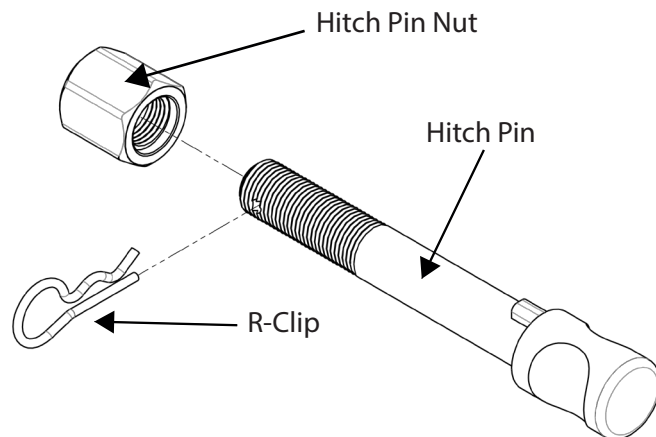


Fig 1. Silent Anti-Rattle Hitch Pin assembly

STEP 1

Insert Trailer Ball Mount (TBM) into towbar HITCHBOX, aligning hole in TBM SHANK with hole in HITCHBOX (Fig 2).

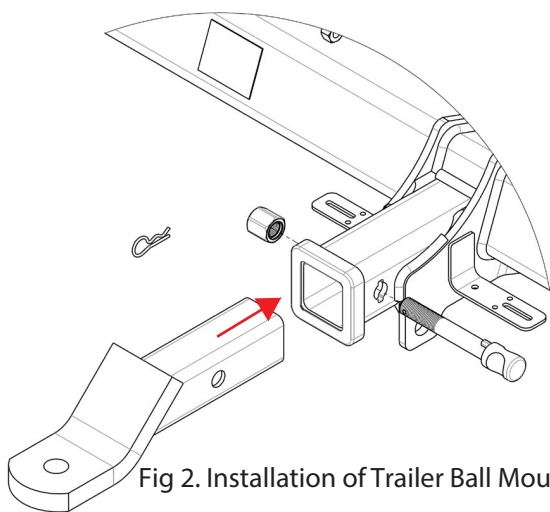


Fig 2. Installation of Trailer Ball Mount

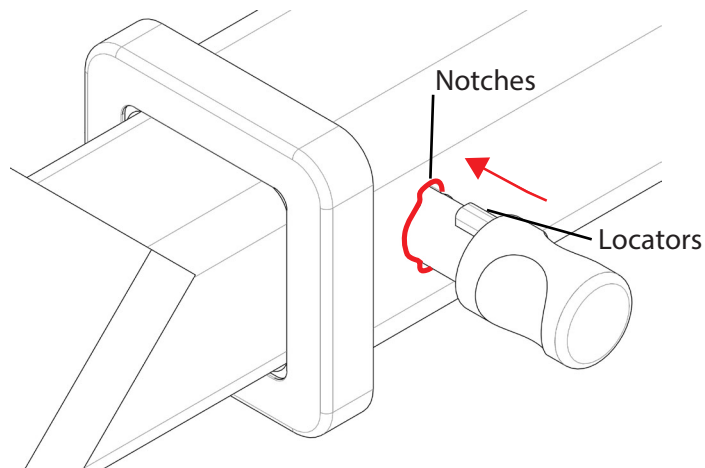


Fig 3. Silent Anti-Rattle Hitch Pin orientation

STEP 2

Insert HITCH PIN through hole in HITCHBOX and hole in TBM SHANK; ensure the LOCATORS are inserted into the NOTCHES in the HITCHBOX (Fig. 3).

STEP 3

Screw HITCH PIN NUT onto HITCH PIN ; tighten HITCH PIN NUT until finger tight, ensuring TBM is restrained from movement.

STEP 4

Tighten HITCH PIN NUT by turning nut a further 1/8th of a turn in the clockwise direction using a 24mm spanner (Fig. 4).

STEP 5

Install HITCH PIN R CLIP through the hole on the HITCH PIN (Fig. 1).

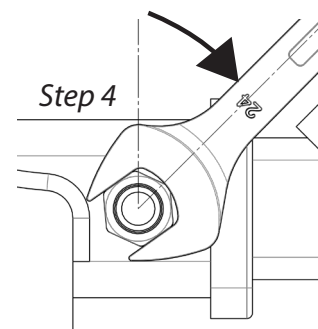


Fig 4. Tightening of Silent Anti-Rattle Hitch Pin Nut