



Towbar Fitting Instructions
 To Suit **TOYOTA CAMRY ASV70R CL4**
 Part Number **QT1135L**
 Rating **1200/120 kg**

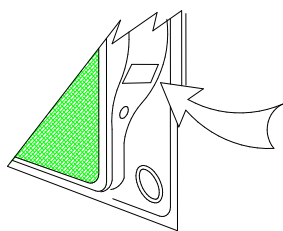
PLACE THESE INSTRUCTIONS IN THE VEHICLE'S GLOVEBOX AFTER INSTALLATION IS COMPLETED

WARNING:

1. Do not, drill, cut, weld or otherwise modify the tow bar.
2. If you are using electric welding on a motor vehicle, **always** check that the vehicle is not equipped with electronic engine or instrument management equipment. Failure to do so could **destroy** any onboard computers. If in doubt, check with the vehicle's manufacturer.
3. The high tensile fasteners supplied with this product were used to achieve the specified rating. If replacement is required ensure that fasteners of the same rating & quality are used. Contact an authorised **Trailboss** dealer if further information is required.
4. If TBM is used in inverted position tow ball may make contact with rear tailgate when lowered, which could cause damage.

General:

1. Ensure all hardware items have been included refer to assembly diagram.
2. It is recommended that the instructions are read through and completely understood before making any attempt to fit this product.
3. Be wary of any changes to vehicle designs or other accessories that may conflict with the installation of this product.
4. Before drilling ensure that the area is clear of fuel, electrical & other components.
5. All holes drilled into the body panels shall have all burrs & swarf removed then coated with a suitable rust preventative paint.
6. For vehicles that require the bumper to be cut. Ensure cut out area is in correct position on the vehicle prior to cutting the bumper.
7. The high tensile fasteners supplied with this product were used to achieve the specified rating. If replacement is required ensure that fasteners of the same rating & quality are used. Contact an authorized **Trailboss** dealer if further information is required.
8. Ensure that all hardware is fastened to torque list below check fasteners on regular basis.
9. Tow bar load rating sticker provided with this product shall be conspicuously located on inside rear end of the driver's door. **(See diagram below).**
10. Trailboss recommends that you check your tow ball to ensure that it complies with the Australian standards **AS 4177.2**.
11. **PLEASE NOTE:** It is advised to remove your LUG or TBM when not actually towing so as to produce a clear view of the vehicles registration plate if obscured, and to also provide maximum available departure angle



Place load rating sticker inside driver's door here

FOR TRAILER TOWING PURPOSES ONLY
 For towing capacity details please refer to vehicle owner's manual or to the manufacturer. Overloading can void your warranties.

RECOMMENDED ASSEMBLY TORQUE LISTING

Diameter	Grade 8.8 Bolt
M6	9.5 Nm
M8	21.7 Nm
M10	43.4 Nm
M12	77.3Nm
M14	146 Nm
M16	189.8 Nm

Tow bar Maintenance and Care.

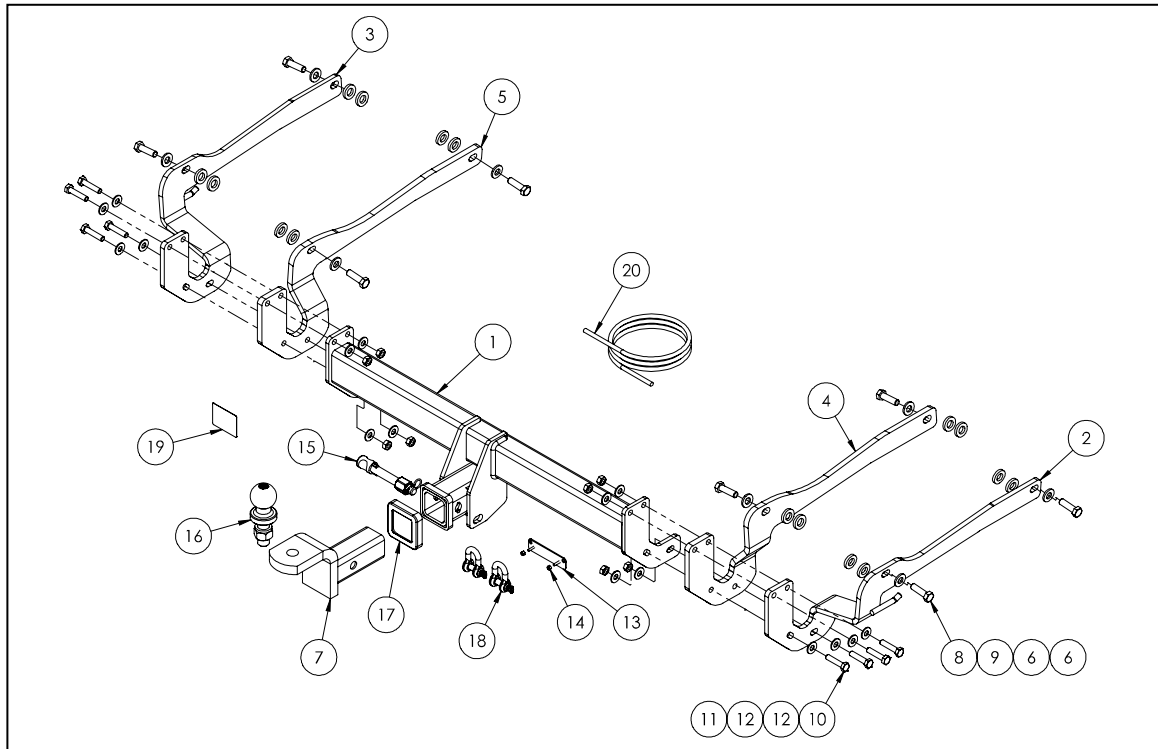
Trailboss recommends that bolt torque's, as listed below, are routinely and regularly inspected and checked for correct tension. Replace any worn or defective parts.
 We recommended to remove Tow Ball Mounts (TBM's, tongues or lugs) when not being used for any considerable length of time.
 So as to avoid injury, when not towing it is suggested that the tongue, Pull Pin and R-clip are removed then stored in a safe, clean and dry place, away from excessive moisture.
 Hitch Pull Pins and spring "R" clips are regularly checked for proper installation. Replace any worn or defective parts.

Cequent Customer Service
 Ph: 1800 812 017 Fax: 03 9898 3299
 Email: info@cequent.com.au
 Post: PO Box 4050, Dandenong South VIC 3175

TRAILBOSS

Towbar Fitting Instructions
 To Suit **TOYOTA CAMRY ASV70R CL4**
 Part Number **QT1135L**
 Rating **1200/120 kg**

PLACE THESE INSTRUCTIONS IN THE VEHICLE'S GLOVEBOX AFTER INSTALLATION IS COMPLETED



ITEM	DESCRIPTION	QTY
1	WELDED ASSY	1
2	OUTBOARD SIDE ARM ASSEMBLY RHS	1
3	OUTBOARD SIDE ARM ASSEMBLY LHS	1
4	SIDEARM INBOARD - RHS	1
5	SIDE ARM INBOARD - LHS	1
6	SIDE ARM SPACER	16
7	TBM	1
8	SET SCREW M12-1.25 X 40 GR 8.8 Z/P	8
9	WASHER PLAIN 1/2X1-1/8X16G	8
10	M10x1.25x45 HEX BOLT PC8.8	8

ITEM	DESCRIPTION	QTY
11	NUT HEX HD M10 X 1.25P G8	8
12	WASHER FLAT M10 X 23 X 2 Z/P	16
13	VE PLUG BRACKET	1
14	NUT NYLON LOCK HEX HD M4X0.7P G8	2
15	SILENT HITCH PIN - SILVER	1
16	50mm TOWBALL	1
17	HITCH BOX COLLAR COVER	1
18	10mm "D" SHACKLE	2
19	ACRYLIC COMPLIANCE LABEL	1
20	WIRING LOOM	1

Cequent Customer Service
 Ph: 1800 812 017 Fax: 03 9898 3299
 Email: info@cequent.com.au
 Post: PO Box 4050, Dandenong South VIC 3175

TRAILBOSS

Towbar Fitting Instructions
To Suit **TOYOTA CAMRY ASV70R CL4**
Part Number **QT1135L**
Rating **1200/120 kg**

PLACE THESE INSTRUCTIONS IN THE VEHICLE'S GLOVEBOX AFTER INSTALLATION IS COMPLETED

1. Remove 1 x scrivet located inside rear wheel arch.

Repeat for opposite side.



2. Remove 1 x scrivet from underside of vehicle near tire well.

Repeat for opposite side.



3. Unclip cover from bumper on underside of vehicle via 6 x scrivets and 5 x plastic hex head nuts. Remove cover and set aside with hardware.



Cequent Customer Service
Ph: 1800 812 017 Fax: 03 9898 3299
Email: info@cequent.com.au
Post: PO Box 4050, Dandenong South VIC 3175

TRAILBOSS

Towbar Fitting Instructions
To Suit **TOYOTA CAMRY ASV70R CL4**
Part Number **QT1135L**
Rating **1200/120 kg**

PLACE THESE INSTRUCTIONS IN THE VEHICLE'S GLOVEBOX AFTER INSTALLATION IS COMPLETED

4. Dislodge and remove plastic trim located next to tail-light. Remove 1 x hex head screw from behind trim securing bumper to rear panel.

Repeat for opposite side.



5. Carefully unclip bumper from corners and remove, ensuring to disconnect any electrical plug/s that may be attached to vehicle body.

Set bumper aside.

6. Remove impact beam via 6 x hex head bolts (3 each side).

Discard impact beam and bolts.



Cequent Customer Service
Ph: 1800 812 017 Fax: 03 9898 3299
Email: info@cequent.com.au
Post: PO Box 4050, Dandenong South VIC 3175

Towbar Fitting Instructions
To Suit **TOYOTA CAMRY ASV70R CL4**
Part Number **QT1135L**
Rating **1200/120 kg**

PLACE THESE INSTRUCTIONS IN THE VEHICLE'S GLOVEBOX AFTER INSTALLATION IS COMPLETED

7. Disconnect exhaust/muffler by removing 2 x exhaust hanger brackets (each with 2 x hex head bolts) and 2 x bolts holding muffler in place.

Carefully remove exhaust/muffler and set aside.

Repeat for opposite side.

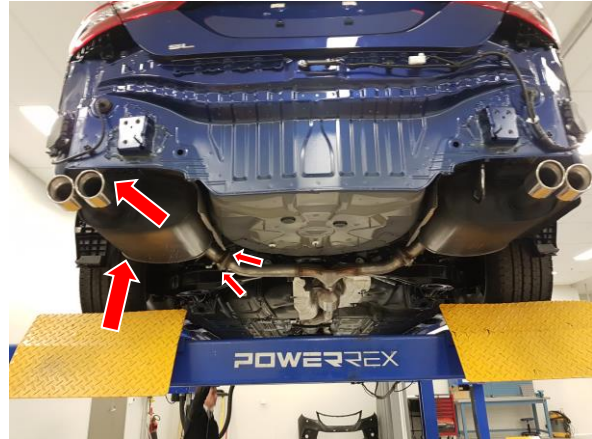
8. On the now disconnected muffler, remove rear most exhaust hanger bracket from rubber mount.

Rubber mount will stay attached to muffler and attach to towbar sidearm later.

Discard bracket.

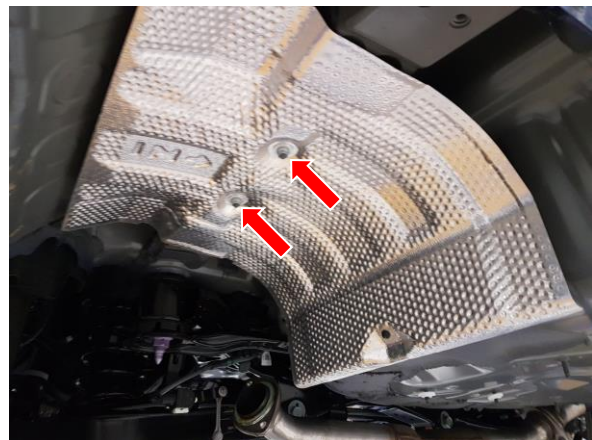
Note: If tow-hook is present, remove and discard.

Repeat for opposite side.



9. Remove heat shield covering chassis rail via 2 x hex head nuts. Set aside with hardware.

Repeat for opposite side.



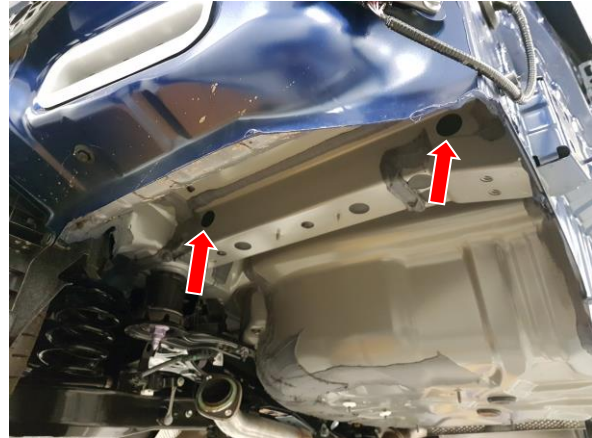
Cequent Customer Service
Ph: 1800 812 017 Fax: 03 9898 3299
Email: info@cequent.com.au
Post: PO Box 4050, Dandenong South VIC 3175

Towbar Fitting Instructions
To Suit **TOYOTA CAMRY ASV70R CL4**
Part Number **QT1135L**
Rating **1200/120 kg**

PLACE THESE INSTRUCTIONS IN THE VEHICLE'S GLOVEBOX AFTER INSTALLATION IS COMPLETED

10. Remove black stickers covering towbar mount points on inboard and outboard face of chassis rail (leave stickers on bottom face of chassis rail).

Repeat for opposite side.

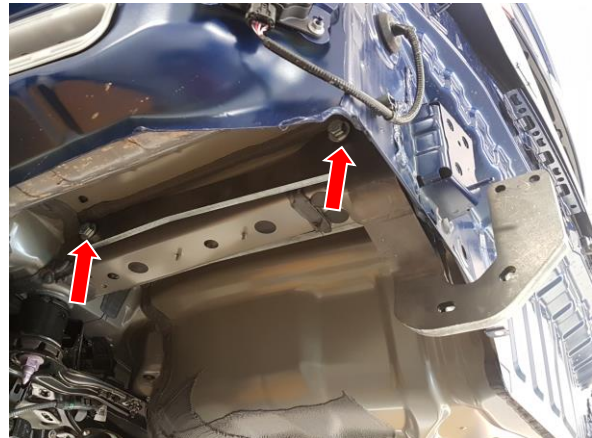


11. Loosely secure inboard and outboard side arms (refer to exploded diagram on page 3) to chassis rail via 2 x M12 bolts per arm complete with 1 x M12 washer per bolt.

Use supplied spacers as required between side arms and chassis rail to ensure there are no gaps.

Remove any sealant present on chassis rail that may interfere with side arms. Coat with an appropriate metal protector.

Repeat for opposite side.

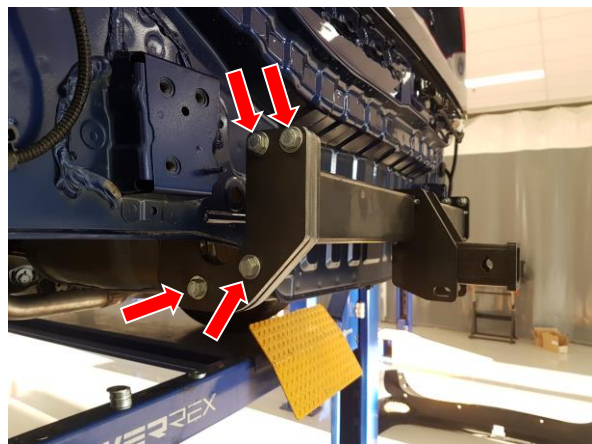


12. Lift towbar up to side arms and loosely secure with 4 x M10 bolts complete with 2 x washers and 1 x nut per bolt.

Repeat for opposite side.

Tighten all fasteners to the torques listed below:

M10 x 1.25 x G8.8: 48 N.m
M12 x 1.25 x G8.8: 89 N.m



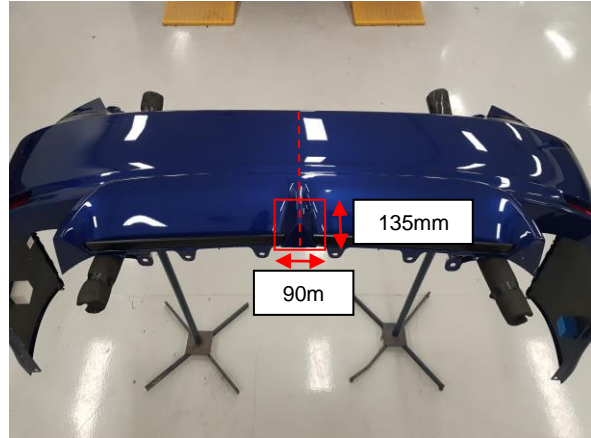
Cequent Customer Service
Ph: 1800 812 017 Fax: 03 9898 3299
Email: info@cequent.com.au
Post: PO Box 4050, Dandenong South VIC 3175

Towbar Fitting Instructions
To Suit **TOYOTA CAMRY ASV70R CL4**
Part Number **QT1135L**
Rating **1200/120 kg**

PLACE THESE INSTRUCTIONS IN THE VEHICLE'S GLOVEBOX AFTER INSTALLATION IS COMPLETED

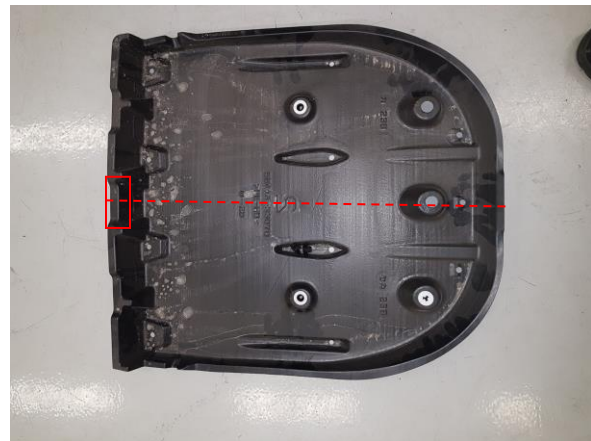
13. Identify the centreline of the bumper.
Measure, mark and cut one of the following depending on your bumper variant:

- **Bumper Cut 1:** 90mm wide x 135mm long as measured from bottom edge of bumper (shown).
- **Bumper Cut 2:** 90mm wide x 155mm long as measured from bottom edge of bumper (not shown).



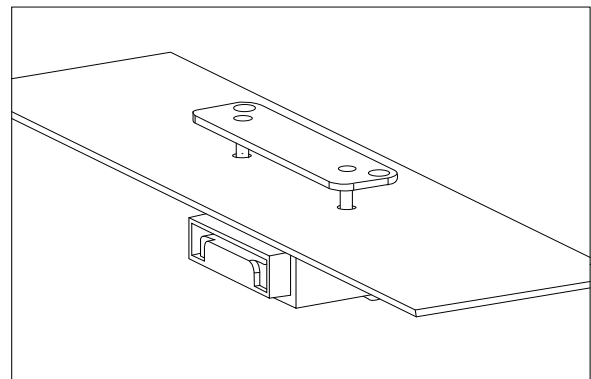
14. Undercover tray may require some minor removal of material to avoid the towbar hitch box.

Identify the centre line of the tray and cut front lip as required to clear hitch box.



15. Find a suitable position on the bumper for the plug bracket.

Mark out and drill 2x $\varnothing 5$ mm holes 69mm apart on bumper skin to support plug bracket. Feed bracket threads through drilled holes prior to reinstalling bumper.



Cequent Customer Service
Ph: 1800 812 017 Fax: 03 9898 3299
Email: info@cequent.com.au
Post: PO Box 4050, Dandenong South VIC 3175



Towbar Fitting Instructions
To Suit **TOYOTA CAMRY ASV70R CL4**
Part Number **QT1135L**
Rating **1200/120 kg**

PLACE THESE INSTRUCTIONS IN THE VEHICLE'S GLOVEBOX AFTER INSTALLATION IS COMPLETED

16. Re-install exhausts, bumper and fasteners following steps 1-8 in reverse. Mount rear most exhaust rubber mount to hanger rod attached to towbar side-arm.

Place the instructions in the glove box after fitment.

Cequent Customer Service
Ph: 1800 812 017 Fax: 03 9898 3299
Email: info@cequent.com.au
Post: PO Box 4050, Dandenong South VIC 3175



Wiring Loom Fitting Instructions
To Suit Toyota Camry
Part Number 101975-WL

Wiring Loom Installation Instructions

Toyota Camry

Part No: 101975-WL

ECU: 04831

Tail Harness Length Required: 1200mm

Power Harness: 04825

RPA Disable: Via button on steering wheel

Electric Brake Input Location: BLUE wire near ECU

Wiring Loom Installation Time: Approx 45 Mins



Wiring Loom Fitting Instructions
To Suit Toyota Camry
Part Number 101975-WL

For Hybrid models only, refer to Steps 1 & 2. For petrol models go to Step 3.

1. Under the RHS of the rear seat, remove the fastener on the hybrid access panel.
2. Remove the hybrid access panel and then remove the orange isolator switch.
3. Remove the RHS luggage compartment trim panel.
4. Disconnect the negative battery terminal.

For petrol models only.

5. In the engine bay, disconnect the negative battery terminal.
6. Remove the luggage compartment carpet.
7. Remove the tool tray.
8. Remove the rear luggage compartment scuff plate by removing the four clips and pulling in an upwards direction.
9. Remove the LHS luggage compartment hook by pressing the center button while pulling the hook.
10. Removing the two trim clips.
11. Remove the LHS luggage compartment trim.
12. Inside the LHS luggage compartment area, locate the vehicle connector and patch in the Trailer Wiring Harness.
13. Using an alcohol wipe, clean the LHS inner sheet metal area and the underside of the ECU (04836).
14. Apply double sided tape to the ECU and secure it to the vehicle sheet metal.
15. Connect the trailer patch 12-way connector to the ECU.
16. Using a 10mm socket, connect the ground wire ring terminal to the vehicle earthing point.
17. Using a 30mm step drill bit, drill a grommet hole in a suitable location near the Blind Spot radar.
18. Feed the blue connector and power wire connector through the previously drilled hole.
19. Seat the grommet in the 30mm hole.

Note: Ensure the grommet is seated correctly and makes a good seal.



Wiring Loom Fitting Instructions
To Suit Toyota Camry
Part Number 101975-WL

20. Connect the Power Harness (04825) 1-way female connector to the 1-way male connector near the blue connector.
21. Route the Power Harness towards the front of the vehicle and up to the positive battery terminal. Tie up any excess lengths if required.

Note: Keep harness routing clear of all sharp edges, moving parts and places of extreme heat.

22. With the rear bumper removed, secure Tail Harness to towbar.
23. Route Tail Harness up towards the blue connector.

Note: Keep harness routing clear of all sharp edges, moving parts and places of extreme heat.

24. Connect the tail harness 8-way connector to the trailer patch mating 8-way connector.
25. Apply silicone grease to waterproof connector.
26. Connect the ring terminal on the power harness to the battery positive. Reconnect the negative battery.
27. Test the trailer patch function using a light board or multi-meter.
28. Secure all harness using cable ties (not supplied).
29. Re-fit all removed parts and secure all fasteners, ensuring there are no squeaks or rattles.
30. Place the fitting instructions in the glove box after fitment.



FITTING INSTRUCTIONS

Silent Anti-Rattle Hitch Pin (PR0001)

• These fitting instructions are supplied to ensure understanding of how the HITCH PIN should be fitted and used correctly.

• Once installed, we recommend **ALL** instructions are kept and placed in the vehicle glove box.

NOTE: Routine maintenance and inspection of the towbar & HITCH PIN is required. Regularly inspect for wear and check the tightness of the Hitch Pin. Follow instructions below to retighten the nut when necessary.

***Do not tow with your vehicle if the R CLIP or the HITCH PIN is loose or missing. Replacement parts are available from your Pro Series Distributor.**

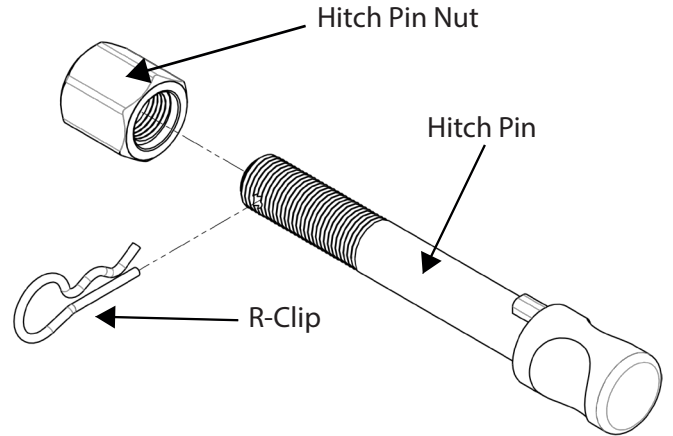


Fig 1. Silent Anti-Rattle Hitch Pin assembly

STEP 1

Insert Trailer Ball Mount (TBM) into towbar HITCHBOX, aligning hole in TBM SHANK with hole in HITCHBOX (Fig 2).

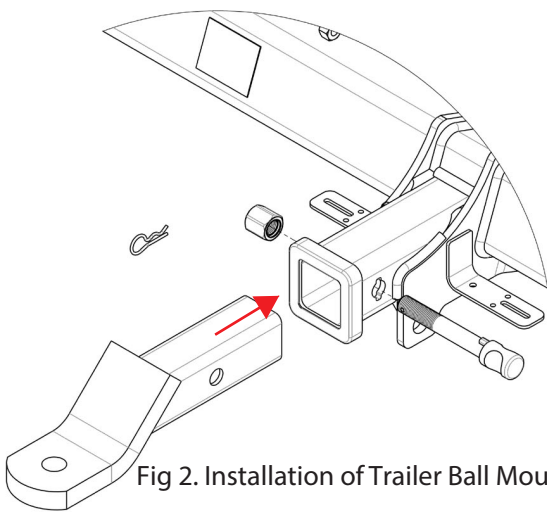


Fig 2. Installation of Trailer Ball Mount

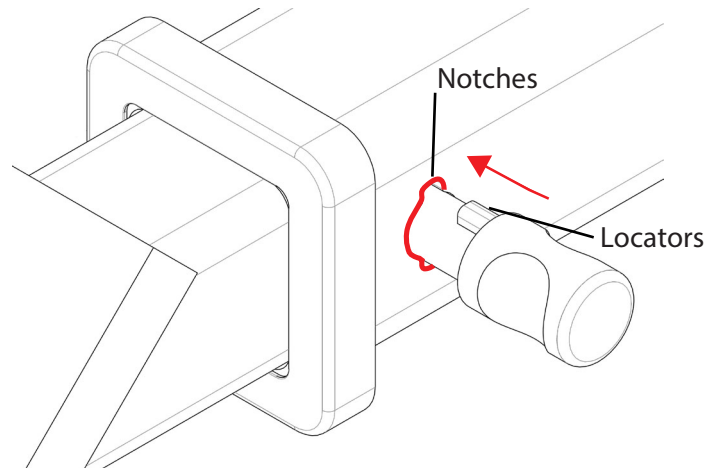


Fig 3. Silent Anti-Rattle Hitch Pin orientation

STEP 2

Insert HITCH PIN through hole in HITCHBOX and hole in TBM SHANK; ensure the LOCATORS are inserted into the NOTCHES in the HITCHBOX (Fig. 3).

STEP 3

Screw HITCH PIN NUT onto HITCH PIN ; tighten HITCH PIN NUT until finger tight, ensuring TBM is restrained from movement.

STEP 4

Tighten HITCH PIN NUT by turning nut a further 1/8th of a turn in the clockwise direction using a 24mm spanner (Fig. 4).

STEP 5

Install HITCH PIN R CLIP through the hole on the HITCH PIN (Fig. 1).

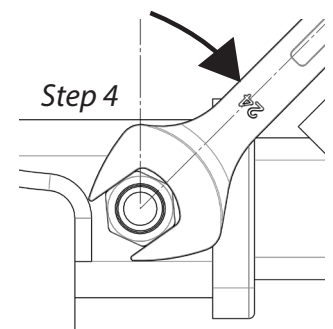


Fig 4. Tightening of Silent Anti-Rattle Hitch Pin Nut