



TOWBAR FITTING INSTRUCTIONS
PART No. QT551
TO SUIT TOYOTA HI-LUX
(WITHOUT STEP OR STEP BUMPER)

79-97 Models 1500kg

'97 Model On 1800kg

1. Offer towbar to vehicle and secure R/H and L/H side as follows:

For 79-97 Models

Secure using bolt, HD21 fitting plate, spring washer and nut. (Items 1, 4, 2 and 3)

For '97 on Models

These models which have weld nuts on inside of chassis rails, are secured using bolt and spring washer (Items 1 and 2). Discard four surplus M12 nuts and HD21 fitting plates (Items 3 and 4)

All Models

2. Secure from underneath with bolt, HD21 fitting plate, spring washer and nut. (Items 1, 4, 2 and 3).
3. Tighten all bolts to the correct torque settings as listed below.
4. Attach Trailboss Hitchbox collar by applying even pressure.(Item 5)

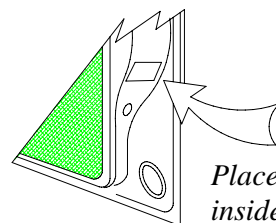
COMPONENT KIT

ITEM	DESCRIPTION	QTY	TORQUE Nm
1	M12 x 40 x 1.25p bolt	6	125
2	12mm spring washer	6	
3	M12 x 1.25p nut	6	
4	HD21 fitting plate, 53 x 40 x 6	6	
5	Trailboss hitchbox collar	1	
6	Tongue, 5006	1	
7	Hitch pin	1*	
8	"R" pin	1*	

NOTE: Items 7 and 8 are used to secure tongue to towbar for transit packaging.

WIRING CODE

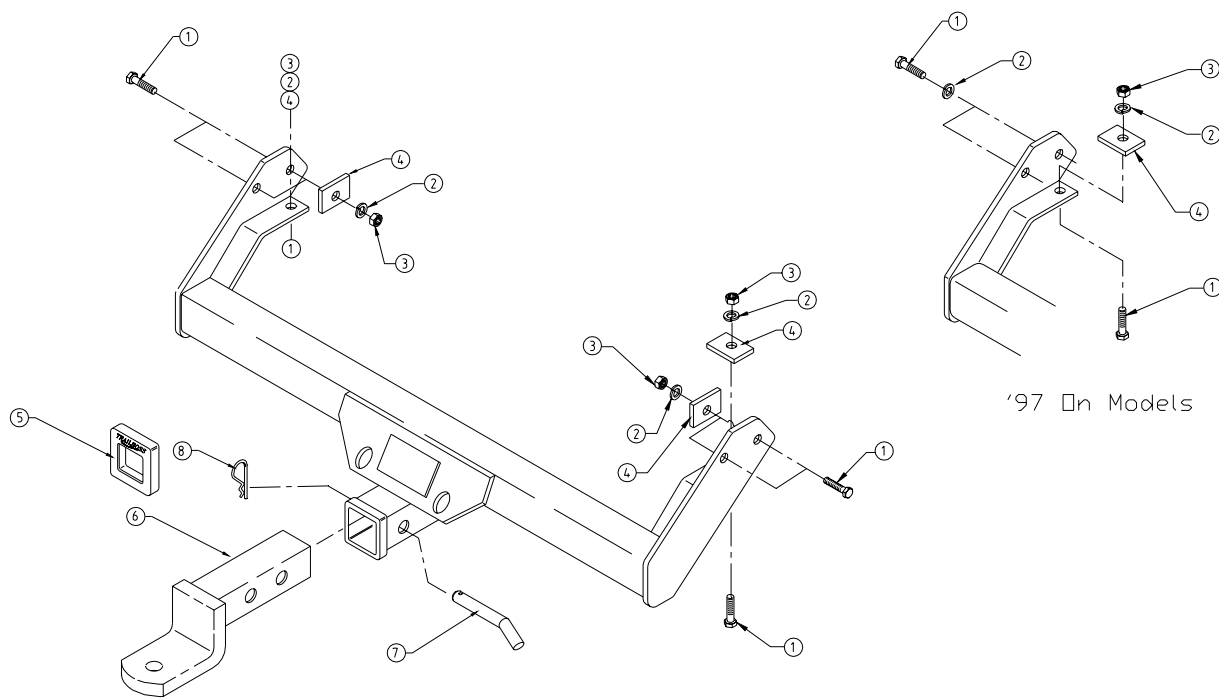
FUNCTION	WIRE HARNESS	VEHICLE COLOUR
R/H INDICATOR	GREEN	GREEN AND YELLOW
L/H INDICATOR	YELLOW	GREEN AND BLACK
STOP	RED	GREEN AND WHITE
TAIL LIGHT	BROWN	GREEN
EARTH	WHITE / BLACK	GROUND



Place Load sticker
inside door here.

Issue Date: 11/12/97

TOYOTA HILUX
PART No. QT551



79 - 97 Models

'97 On Models

Page 2