

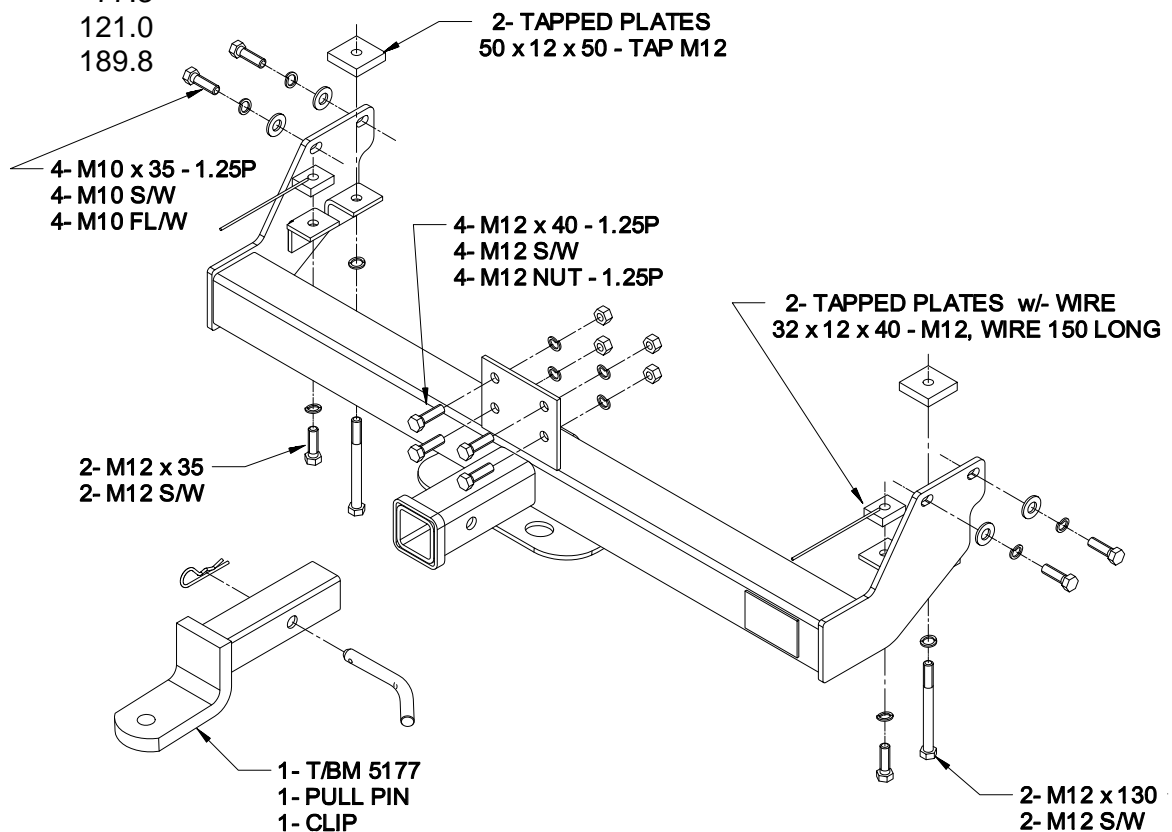
TRAILBOSS

Towbar Fitting Instructions
TO SUIT- TOYOTA LAND CRUISER CAB CHASSIS
75 & 78 SERIES 85-ON
 Part Number QT871AL
 Rating 8/96-on 3500Kg
 85-7/96 2500Kg

1. Ensure all hardware items have been included.
2. Remove towing hook from centre of vehicle.
3. Lift towbar into position and bolt it to vehicle semi tight with four 12x40 bolts and nuts supplied.
4. Fit four 10mm fine thread bolts through side arms into tapped holes in chassis.
5. Using holes in angles on side plates as guides, drill four 13mm holes up through bottom and top face of forward two angles and lower face of rearward most angles.
6. Tighten four 12mm bolts first then four 10mm bolts to torque specifications below.
7. Tighten all bolts to torque listing below.
8. Towbar rating sticker to be conspicuously located on inside rear end of the driver's door. (see diagram below)

RECOMMENDED ASSEMBLY TORQUE LISTING

<u>Diameter</u>	<u>Grade 8.8 Bolt</u>
	<u>Nm</u>
M6	9.5
M8	21.7
M10	43.4
M12	77.3
M14	121.0
M16	189.8





Wiring Loom Fitting Instructions
To Suit Toyota Landcruiser 70 Series
Part Number 100038-WL

Wiring Loom Installation Instructions

Toyota Landcruiser 70 Series
(January 2000 – Onwards)
Part No: 100038-WL

Tail Harness Length Required: 1200mm
RPA Override Switch Part No: 04848 (If Fitted)

Wiring Loom Installation Time: Approx 30 Mins



Wiring Loom Fitting Instructions
To Suit Toyota Landcruiser 70 Series
Part Number 100038-WL

1. In the engine bay, locate the vehicle battery.
2. Route the Power Harness (04825) from the battery, along the firewall and down towards the vehicle undercarriage.

Note: Do not connect the Power Harness to the battery at this point.

3. From the vehicle undercarriage, locate the Power Harness.
4. Route the Power Harness along the RHS chassis rail and towards the rear of the vehicle.

Note: The Power Harness can be routed along either the RHS or the LHS chassis rail. The RHS is preferable as the vehicle exhaust is located on the LHS.

Note: When routing any harnesses underneath the vehicle, ensure to avoid all moving parts, sources of heat and sharp objects.

5. Continue routing the Power Harness along the top of the RHS chassis rail and towards the rear of the vehicle.
6. Following the path of the hydraulic lines, route the Power Harness along the RHS chassis rail and towards the rear of the vehicle.
7. Keeping clear of the rear suspension components, continue routing the Power Harness along the RHS chassis rail and towards the rear of the vehicle.
8. Route the Power Harness along the rear of the vehicle and towards the vehicle 8-way breakout connector.
9. On the rear of the LHS chassis rail, locate the 8-way vehicle breakout connector.
10. Remove the blanking plug from the vehicle breakout connector.
11. Connect the Trailer Harness (P/No: 100038-WL) 8-way connector to the vehicle 8-way breakout connector.
12. Connect the Power Harness 1-way connector to the Trailer Harness 1-way mating connector.
13. Mount the trailer socket to the towbar mounting bracket using M4 fasteners (not supplied).
14. Route the Tail Harness (tail length 1200mm) across the towbar and towards the LHS of the vehicle.
15. Connect the Tail Harness 8-way connector to the Trailer Harness mating 8-way connector.
16. Waterproof the connectors by applying electrical grease or silicone to the back of each connector.



Wiring Loom Fitting Instructions
To Suit Toyota Landcruiser 70 Series
Part Number 100038-WL

17. Test the Trailer socket using a light board or multi-meter.
18. Secure the all harnesses using cables ties (not supplied).
19. Re-fit all removed parts and secure all fasteners.
20. Place the instructions in the glove box after fitment.