

# TRAILBOSS

Towbar Fitting Instructions  
To Suit **TOYOTA KLUGER GSU50-55R SERIES**  
Part Number **QT1122L**  
Rating **2000/200 kg**

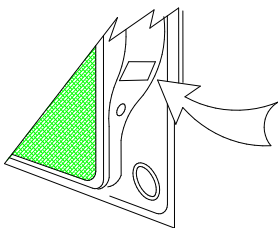
PLACE THESE INSTRUCTIONS IN THE VEHICLE'S GLOVEBOX AFTER INSTALLATION IS COMPLETED

## WARNING:

1. Do not, drill, cut, weld or otherwise modify the tow bar.
2. If you are using electric welding on a motor vehicle, **always** check that the vehicle is not equipped with electronic engine or instrument management equipment. Failure to do so could **destroy** any onboard computers. If in doubt, check with the vehicle's manufacturer.
3. The high tensile fasteners supplied with this product were used to achieve the specified rating. If replacement is required ensure that fasteners of the same rating & quality are used. Contact an authorised **Trailboss** dealer if further information is required.
4. If TBM is used in inverted position tow ball may make contact with rear tailgate when lowered, which could cause damage.

## General:

1. Ensure all hardware items have been included refer to assembly diagram.
2. It is recommended that the instructions are read through and completely understood before making any attempt to fit this product.
3. Be wary of any changes to vehicle designs or other accessories that may conflict with the installation of this product.
4. Before drilling ensure that the area is clear of fuel, electrical & other components.
5. All holes drilled into the body panels shall have all burrs & swarf removed then coated with a suitable rust preventative paint.
6. For vehicles that require the bumper to be cut. Ensure cut out area is in correct position on the vehicle prior to cutting the bumper.
7. The high tensile fasteners supplied with this product were used to achieve the specified rating. If replacement is required ensure that fasteners of the same rating & quality are used. Contact an authorized **Trailboss** dealer if further information is required.
8. Ensure that all hardware is fastened to torque list below check fasteners on regular basis.
9. Tow bar load rating sticker provided with this product shall be conspicuously located on inside rear end of the driver's door. **(See diagram below).**
10. Trailboss recommends that you check your tow ball to ensure that it complies with the Australian standards **AS 4177.2**.
11. **PLEASE NOTE:** It is advised to remove your lug or tbn when not actually towing so as to produce a clear view of the vehicles registration plate if obscured, and to also provide maximum available departure angle
12. Pull Pin must be fit in down position.



Place load rating sticker  
inside driver's door here

**FOR TRAILER TOWING PURPOSES ONLY**  
For towing capacity details please refer to vehicle owner's manual or to the manufacturer. Overloading can void your warranties.

## RECOMMENDED ASSEMBLY TORQUE LISTING

Diameter	Grade 8.8 Bolt
M6	9.5 Nm
M8	21.7 Nm
M10	43.4 Nm
M12	77.3Nm
M14	146 Nm
M16	189.8 Nm

## Tow bar Maintenance and Care.

Trailboss recommends that bolt torque's, as listed below, are routinely and regularly inspected and checked for correct tension. Replace any worn or defective parts.

We recommended to remove Tow Ball Mounts (TBM's, tongues or lugs) when not being used for any considerable length of time.

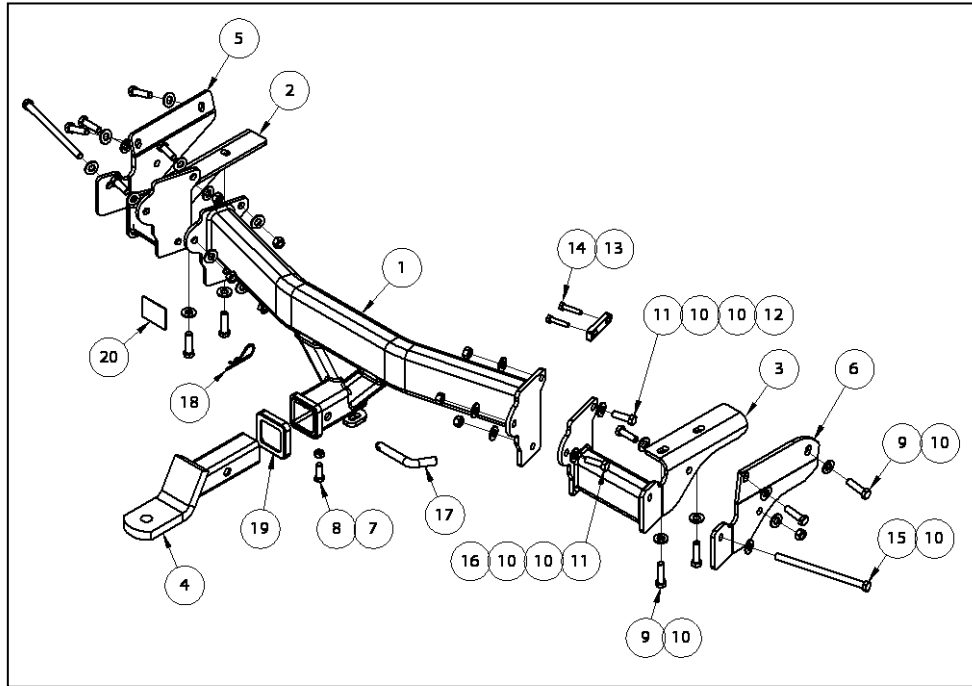
So as to avoid injury, when not towing it is suggested that the tongue, Pull Pin and R-clip are removed then stored in a safe, clean and dry place, away from excessive moisture.

Hitch Pull Pins and spring "R" clips are regularly checked for proper installation. Replace any worn or defective parts.

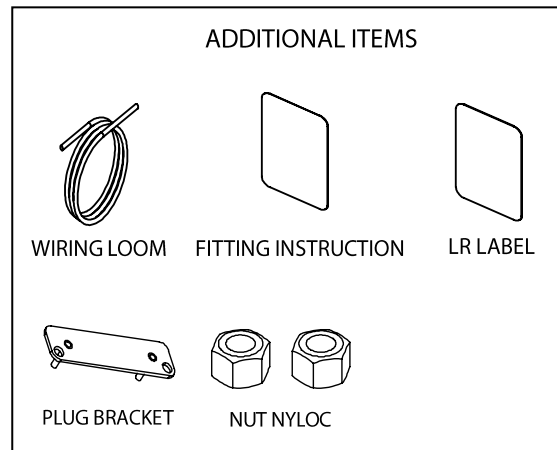
# TRAILBOSS

Towbar Fitting Instructions  
 To Suit **TOYOTA KLUGER GSU50-55R SERIES**  
 Part Number **QT1122L**  
 Rating **2000/200 kg**

PLACE THESE INSTRUCTIONS IN THE VEHICLE'S GLOVEBOX AFTER INSTALLATION IS COMPLETED



QTY	DESCRIPTION	ITEM NO
1	WELDED ASSEMBLY	1
1	WELDED ASSEMBLY	2
1	WELDED ASSEMBLY	3
1	CLASS 4 TBM	4
1	LAMINATE PLATE LHS	5
1	LAMINATE PLATE RHS	6
1	HEX NUT M10X1.5	7
1	SET SCREW HX HD M10x30x1.5P	8
8	SET SCREW M12-1.25x45mm	9
24	FLAT WASHER M14x25x3 Z/P	10
6	BOLT M12-1.25x40mm	11
6	HEX NUT M12x1.25 PC8	12
1	EXHAUST SPACER	13
2	M8x40mm BOLT	14
2	BOLT M12-1.75x200	15
2	HEX NUT M12x1.75 PC8	16
1	PULL PIN	17
1	R CLIP	18
1	HITCH BOX COLLAR COVER	19
1	ACRYLIC COMPLIANCE PLATE	20





Towbar Fitting Instructions  
To Suit **TOYOTA KLUGER GSU50-55R SERIES**  
Part Number **QT1122L**  
Rating **2000/200 kg**

PLACE THESE INSTRUCTIONS IN THE VEHICLE'S GLOVEBOX AFTER INSTALLATION IS COMPLETED

**INSTRUCTION:**

1. Release the tail gate to expose the boot of the vehicle. Remove 2x Hex head Bolts directly under the tail lights of the vehicle for both passenger and driver side.
2. On the inside of the rear guards remove 1x Plastic Trim Clip and 3x Allen Key Head Screws. Repeat for Drivers side and Passenger side.
3. On the inside of the rear guard at the top remove 1x Trim Clip and 1x Hex Head Bolt. This will allow you to remove the guard mould that secures the rear bumper to the rear quarter panel.
4. On the underside of the Bumper remove 3x Hex Head Screws and 2x Plastic Trim clips. This will allow you to remove the underside trim connected to the Bumper. Repeat for Passenger and Drivers Side.
5. On the underside of the Bumper there are a further 4x Trim Clips. With two located either side of the spare wheel. Remove for both passenger and Driver side.

Carefully remove the Bumper by peeling away both sides and sliding the Bumper rearward. Disconnect any factory fitted rear parking sensors. Keep in a safe place for re-attachment.

6. With the Rear Bumper off the vehicle, remove 6x Hex Head Bolts retaining the Impact Beam and disregard both.
7. Remove 2x Hex Head bolts securing the two factory Shipping Hooks and disregard. Repeat for both passenger and driver side.

On the outside wall of each Chassis rail are two plastic trim clips concealing Towbar mounting hole remove and disregard. These will serve as mounting points for the Towbar.

8. On the Driver side, unbolt the Exhaust Hanger where it mounts to the inside of the Chassis Rails. Re-attach Exhaust Hanger with the exhaust spacer provided and 2x M10x40mm Set Screws.
9. On the Driver's side loosely secure the corresponding side arm using the vertical mounts and 2x M12x45 Set Screws on the chassis rails. See images on Page 2 for clarification.

Repeat for Passenger side.

10. Loosely attach the centre section of the Towbar using the top three mounting points with 3x M12 x 40 Sets Screws, flat washers and Hex Nuts to suit. Repeat for both sides of the centre section.
11. Please be advised that this Towbar has very tight clearances. It is CRITICAL that the spare tyre be reset. Lower the tyre out of the cradle using the factory tool kit and push the tyre while it is loose as far forward (to the front of the vehicle) and re-seat it into the cradle. This is will allow for sufficient clearance to the tow bar and spare tyre.
12. Loosely attach the support plates for both Drivers side and passenger side on the outside of the chassis rails using the horizontal mount points first (2x M12x45 Set Screws). Then use the M12 x 200 Set Screw to secure the support plate, side arm and centre section together with flat washers and Hex Nut to suit.

**Note: The M12x200 Set Screws is Standard pitch and has a Hex Nut to suit.**

Torque Bolts to specified ratings featured on Page 1.



Towbar Fitting Instructions  
To Suit **TOYOTA KLUGER GSU50-55R SERIES**  
Part Number **QT1122L**  
Rating **2000/200 kg**

PLACE THESE INSTRUCTIONS IN THE VEHICLE'S GLOVEBOX AFTER INSTALLATION IS COMPLETED

13. The rear Bumper is a two piece item with a bottom garnish. Separate the garnish from the Bumper. Cut the extended locating flange to follow the line of the underside of the garnish.
14. From the centre of the garnish cut approximately 100MM either side and 35MM up from the bottom of the garnish. Then cut an additional 43MM either side from the centre of the garnish and 20MM up from the previous cut. Reattach garnish to the Bumper.
15. On both sides of the underbody trim, where the factory shipping hook protrudes extend the relief hold an additional 60MM.
16. On the backside of the Bumper bar, there are several reinforcement blocks, cut the second block inboard from the driver's side off by either trimming with an air saw or die grinder. This is the second block from the right edge of the Bumper. Repeat for passenger side of Bumper bar.
17. With the right hand side or drivers side underside trim, cut a section from the front approximately 110MM deep and 95MM wide on the bottom of the trim. Whilst retaining the trim clip hole for remounting to the Bumper garnish.
18. On the left hand side or passenger side underside trim cut the most rearward inner corner of the trim to suit.  
  
Cut approximately 150MM deep and 100MM wide all the way through to the relief hole for the factory Shipping hook.
19. Re-attach Bumper by following steps 1-6 in reverse.



Wiring Loom Fitting Instructions  
To Suit Toyota Kluger MY11 – MY14  
Part Number 100471-WL

### Wiring Loom Installation Instructions

Toyota Kluger MY11 – MY13 (pages 2 and 3)  
Toyota Kluger MY14 (Page 4)  
Part No: 100471-WL

Tail Length Required: 1200mm

ECU Required Part No: 04826  
RPA Override Switch Part No: 04848 (If Fitted)

Wiring Loom Installation Time: Approx 40 Mins



Wiring Loom Fitting Instructions  
To Suit Toyota Kluger MY11 – MY14  
Part Number 100471-WL

**These following Steps for Toyota Kluger MY07 to MY13**

1. In the engine bay, remove the fuse box cover.
2. From underneath the vehicle, remove the LHS rear bumper shroud by first removing all the fasteners.
3. In the luggage compartment, fold the rear seats forward.
4. Remove the rear section of the floor cover carpet.
5. Remove the LHS & RHS outer floor cover carpet.
6. Remove the LHS storage compartment by first removing the two fasteners.
7. In the rear LHS of the luggage compartment, remove the larger front most grommet.
8. Drill out the grommet hole to Ø31mm.
9. File any rough or sharp edges and spray on rust inhibitor.
10. In the rear LHS quarter of the luggage compartment, locate the vehicle trailer 6-way female breakout connector.
11. Connect the trailer patch connector to the vehicle trailer breakout connector.
12. In the LHS of the luggage compartment, connect the trailer harness ground ring terminal to the vehicle grounding point.
13. Connect the trailer patch harness 12-way connector to the ECU (04826).
14. Apply double sided tape to the ECU and adhere it to the outward face of the inner sheet metal on the RHS of the luggage compartment.

**For vehicles produced from May 2007–June 2010:**

15. Locate the 'Towing' fuse location.
16. Insert the (supplied) 30-amp fuse into the 'Towing' fuse location.

**For vehicles produced from July 2010 to 2013:**

17. Locate the 'Towing' fuse location.
18. Insert the (supplied) 30-amp fuse into the 'Towing' fuse location.
19. Mount the trailer socket to the towbar mounting bracket using M4 fasteners (not supplied).
20. Route the tail harness across the towbar towards the LHS of the vehicle and up through the previously drilled out hole.
21. Ensure the tail harness grommet is seated correctly and secure in place using a cable



Wiring Loom Fitting Instructions  
To Suit Toyota Kluger MY11 – MY14  
Part Number 100471-WL

tie (not supplied).

22. Connect the tail harness (tail length 1200mm) 8-way connector to the trailer harness mating 8-way connector.
23. Test the Trailer socket using a light board or multi-meter.
24. Secure all harnesses using cables ties (not supplied).
25. Re-fit all removed parts and secure all fasteners.
26. Place instructions in glove box after fitment.

**These following Steps for Toyota Kluger MY14 only:**

1. Fold down the rear seats and remove the luggage compartment floor cover and remove the centre, LHS and RHS tool trays (not shown).
2. Remove the luggage compartment rear trim.
3. Gain access to the LHS rear quarter area and tail light connectors. **Repeat for the LHS.**
4. Locate a suitable area in the LHS rear quarter and drill out the grommet hole to 30mm.
5. After drilling, file any rough or sharp edges and spray on rust inhibitor.
6. Connect the trailer patch (P/No: 100471-WL) break-out connector to the vehicle break-out connector.
7. Secure the brake controller harness with cable ties (not supplied) away from any moving parts, sharp edges or hot surfaces at 200mm intervals.
8. Using a tek screw (not supplied) secure the trailer patch ground ring terminal to the vehicle grounding point.
9. Apply double sided tape to the ECU (1) and adhere it to the outward face of the inner sheet metal on the RHS of the luggage compartment. Ensure the ECU is mounted with the connector pointing downwards as much as possible to avoid water ingress or condensation.
10. Referring to the fuse panel, locate the 'Towing' fuse location. Insert the (supplied) 30-amp fuse into the 'Towing' fuse location.
11. Test the body harness using a light board or multimeter.
12. Using cable ties (not supplied), secure harnesses away from any moving parts, sharp edges or hot surfaces at 200mm intervals.
13. Re-fit all removed parts and secure all fasteners, ensuring there are no squeaks or rattles.
14. Place the instructions in the glove box after fitment.



# FITTING INSTRUCTIONS

## Silent Anti-Rattle Hitch Pin (PR0001)

• These fitting instructions are supplied to ensure understanding of how the HITCH PIN should be fitted and used correctly.

• Once installed, we recommend **ALL** instructions are kept and placed in the vehicle glove box.

**NOTE: Routine maintenance and inspection of the towbar & HITCH PIN is required. Regularly inspect for wear and check the tightness of the Hitch Pin. Follow instructions below to retighten the nut when necessary.**

**\*Do not tow with your vehicle if the R CLIP or the HITCH PIN is loose or missing. Replacement parts are available from your Pro Series Distributor.**

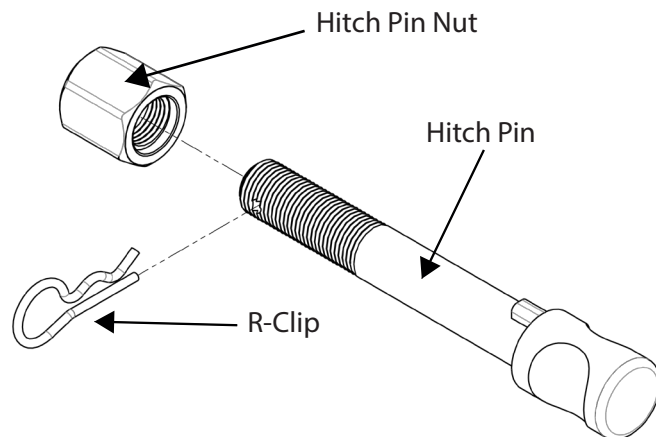


Fig 1. Silent Anti-Rattle Hitch Pin assembly

**STEP 1** Insert Trailer Ball Mount (TBM) into towbar HITCHBOX, aligning hole in TBM SHANK with hole in HITCHBOX (Fig 2).

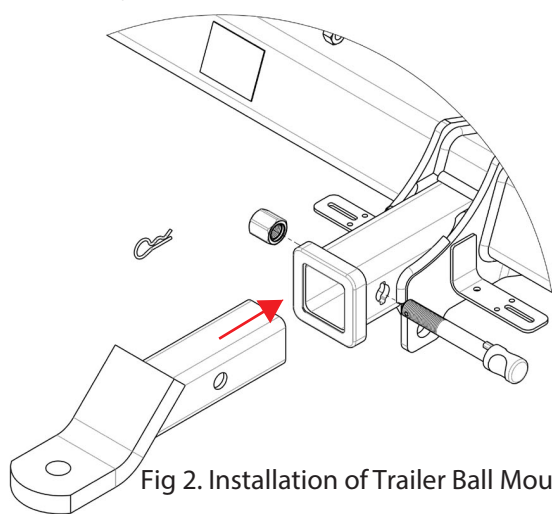


Fig 2. Installation of Trailer Ball Mount

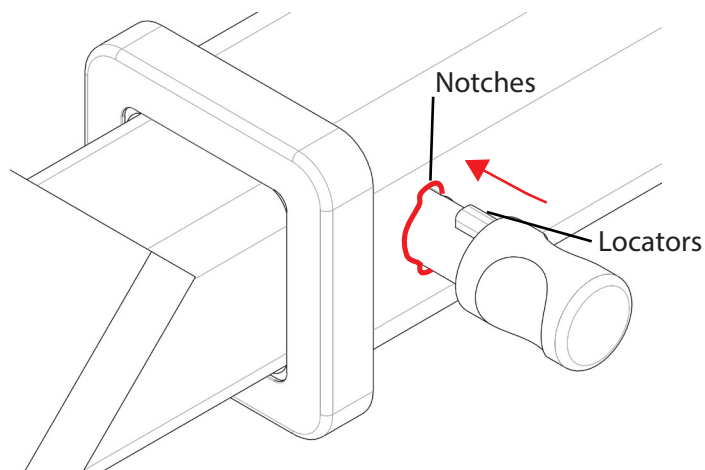


Fig 3. Silent Anti-Rattle Hitch Pin orientation

**STEP 2** Insert HITCH PIN through hole in HITCHBOX and hole in TBM SHANK; ensure the LOCATORS are inserted into the NOTCHES in the HITCHBOX (Fig. 3).

**STEP 3** Screw HITCH PIN NUT onto HITCH PIN ; tighten HITCH PIN NUT until finger tight, ensuring TBM is restrained from movement.

**STEP 4** Tighten HITCH PIN NUT by turning nut a further 1/8th of a turn in the clockwise direction using a 24mm spanner (Fig. 4).

**STEP 5** Install HITCH PIN R CLIP through the hole on the HITCH PIN (Fig. 1).

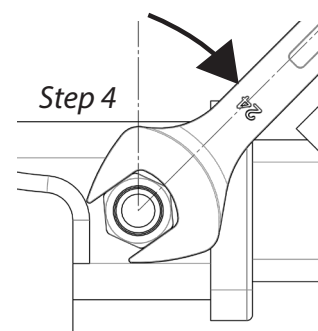


Fig 4. Tightening of Silent Anti-Rattle Hitch Pin Nut