



Towbar Fitting Instructions
 To Suit **QTAU7L**
 Part Number **AUDI Q7 4M SERIES**
 Rating **3500/350 kg**

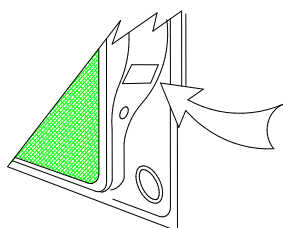
PLACE THESE INSTRUCTIONS IN THE VEHICLE'S GLOVEBOX AFTER INSTALLATION IS COMPLETED

WARNING:

1. Do not, drill, cut, weld or otherwise modify the tow bar.
2. If you are using electric welding on a motor vehicle, **always** check that the vehicle is not equipped with electronic engine or instrument management equipment. Failure to do so could **destroy** any onboard computers. If in doubt, check with the vehicle's manufacturer.
3. The high tensile fasteners supplied with this product were used to achieve the specified rating. If replacement is required ensure that fasteners of the same rating & quality are used. Contact an authorised **Trailboss** dealer if further information is required.
4. If TBM is used in inverted position tow ball may make contact with rear tailgate when lowered, which could cause damage.

General:

1. Ensure all hardware items have been included refer to assembly diagram.
2. It is recommended that the instructions are read through and completely understood before making any attempt to fit this product.
3. Be wary of any changes to vehicle designs or other accessories that may conflict with the installation of this product.
4. Before drilling ensure that the area is clear of fuel, electrical & other components.
5. All holes drilled into the body panels shall have all burrs & swarf removed then coated with a suitable rust preventative paint.
6. For vehicles that require the bumper to be cut. Ensure cut out area is in correct position on the vehicle prior to cutting the bumper.
7. The high tensile fasteners supplied with this product were used to achieve the specified rating. If replacement is required ensure that fasteners of the same rating & quality are used. Contact an authorized **Trailboss** dealer if further information is required.
8. Tow bar load rating sticker provided with this product shall be conspicuously located on inside rear end of the driver's door. **(See diagram below).**
9. Trailboss recommends that you check your tow ball to ensure that it complies with the Australian standards **AS 4177.2.**
10. **PLEASE NOTE:** It is advised to remove your LUG or TBM when not actually towing so as to produce a clear view of the vehicles registration plate if obscured, and to also provide maximum available departure angle



Place load rating sticker inside driver's door here

FOR TRAILER TOWING PURPOSES ONLY
 For towing capacity details please refer to vehicle owner's manual or to the manufacturer. Overloading can void your warranties.

RECOMMENDED ASSEMBLY TORQUE LISTING

Diameter	Grade 8.8 Bolt
M6	9.5 Nm
M8	21.7 Nm
M10	43.4 Nm
M12	77.3Nm
M14	146 Nm
M16	189.8 Nm

Tow bar Maintenance and Care.

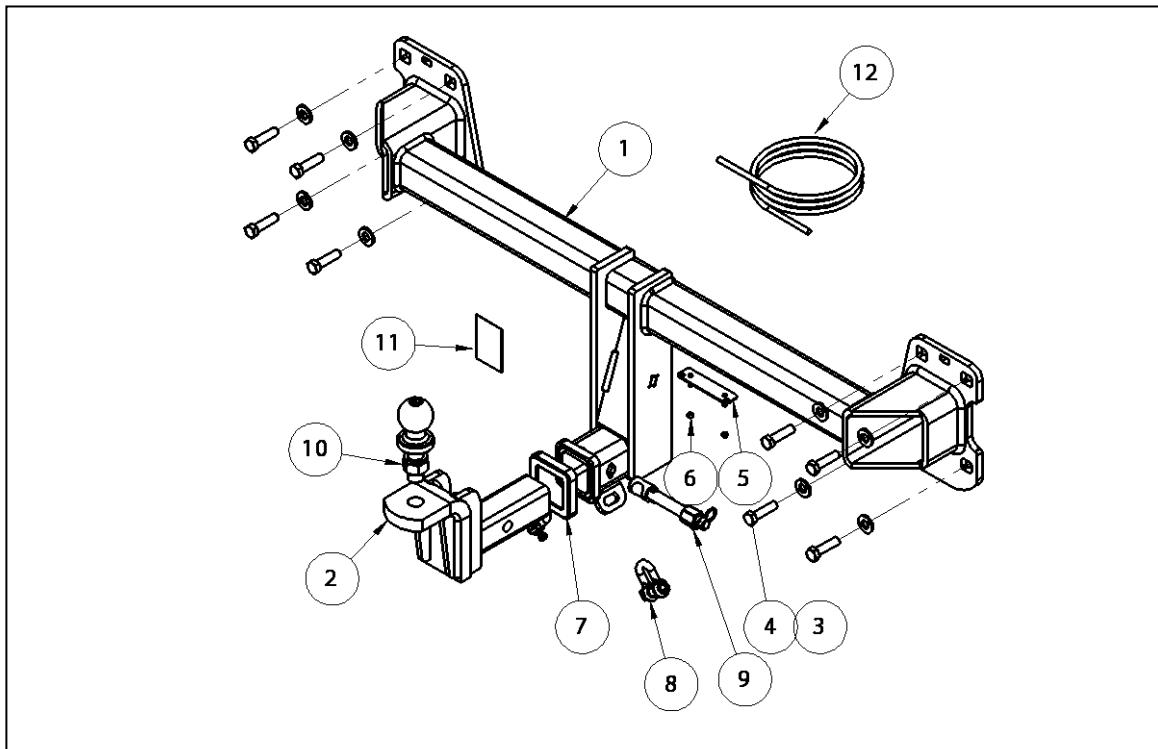
Trailboss recommends that bolt torque's, as listed below, are routinely and regularly inspected and checked for correct tension. Replace any worn or defective parts.
 We recommended to remove Tow Ball Mounts (TBM's, tongues or lugs) when not being used for any considerable length of time.
 So as to avoid injury, when not towing it is suggested that the tongue, Pull Pin and R-clip are removed then stored in a safe, clean and dry place, away from excessive moisture.
 Hitch Pull Pins and spring "R" clips are regularly checked for proper installation. Replace any worn or defective parts.

Cequent Customer Service
 Ph: 1800 812 017 Fax: 03 9898 3299
 Email: info@cequent.com.au
 Post: PO Box 4050, Dandenong South VIC 3175

TRAILBOSS

Towbar Fitting Instructions
 To Suit **QTAU7L**
 Part Number **AUDI Q7 4M SERIES**
 Rating **3500/350 kg**

PLACE THESE INSTRUCTIONS IN THE VEHICLE'S GLOVEBOX AFTER INSTALLATION IS COMPLETED



ITEM NO.	DESCRIPTION	QTY.
1	AUDI QY QUATTRO 4M WEDLED ASSY	1
2	CL4 TBM ASSY	1
3	WASHER FLAT 1/2"x1 1/8"x1/8"	8
4	SET SCREW M12x45x1.5P GR10.9	8
5	PLUG BRACKET	1
6	NUT NYLOC M4-0.7 Z/P	2
7	HITCH BOX COLLAR COVER	1
8	10mm "D" SHACKLE	2
9	SILENT HITCH PIN-SILVER	1
10	50mm TOWBALL	1
11	ACRYLIC COMPLIANCE PLATE	1
12	WIRING LOOM	1

Cequent Customer Service
 Ph: 1800 812 017 Fax: 03 9898 3299
 Email: info@cequent.com.au
 Post: PO Box 4050, Dandenong South VIC 3175

TRAILBOSS

Towbar Fitting Instructions
To Suit **QTAU7L**
Part Number **AUDI Q7 4M SERIES**
Rating **3500/350 kg**

PLACE THESE INSTRUCTIONS IN THE VEHICLE'S GLOVEBOX AFTER INSTALLATION IS COMPLETED

1. Remove 2 x Torx screws from inside the rear wheel arch.

Repeat for other side of vehicle.



2. In rear wheel arch, lift felt and remove 1 x Torx screw securing bumper.

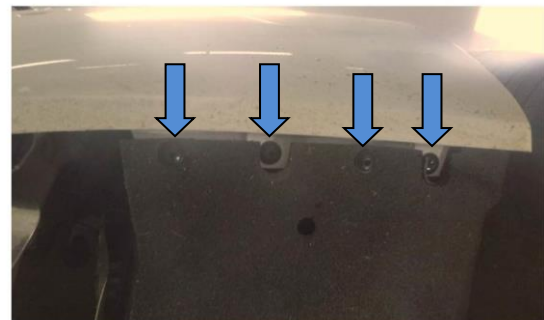
Repeat for other side of vehicle.



3. Under side of bumper rear of the arch, remove 4 x Torx screws:

- 2 x securing protector to bumper.
- 2 x securing bumper to vehicle mounts.

Repeat for other side of vehicle.



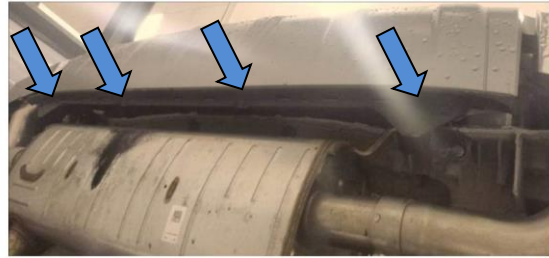
Cequent Customer Service
Ph: 1800 812 017 Fax: 03 9898 3299
Email: info@cequent.com.au
Post: PO Box 4050, Dandenong South VIC 3175

TRAILBOSS

Towbar Fitting Instructions
To Suit **QTAU7L**
Part Number **AUDI Q7 4M SERIES**
Rating **3500/350 kg**

PLACE THESE INSTRUCTIONS IN THE VEHICLE'S GLOVEBOX AFTER INSTALLATION IS COMPLETED

4. Remove 4 x Torx screws at underside of rear of bumper.



5. Inside wheel arch, remove 1 x nut securing wheel arch TRIM.

Repeat for other side of vehicle.



6. Partially remove wheel arch trim and remove 2 x Torx screws securing the bumper to the vehicle.

NOTE: The 2 x wheel arch trim clips need to be squeezed and pushed out of the retainers.

Repeat for other side of vehicle.

7. Carefully peel off and remove bumper.

NOTE: It is not necessary to disconnect the wiring harness from the bumper (lead on the LH side), **however**, have a suitable area next to vehicle to support the bumper once removed.



Cequent Customer Service

Ph: 1800 812 017 Fax: 03 9898 3299

Email: info@cequent.com.au

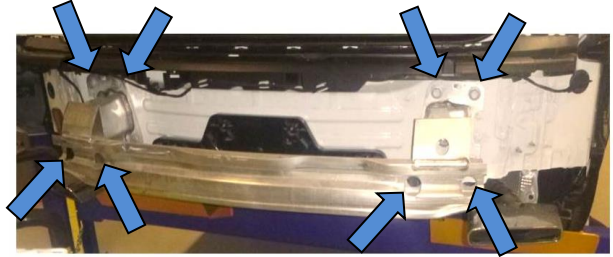
Post: PO Box 4050, Dandenong South VIC 3175

Towbar Fitting Instructions
To Suit **QTAU7L**
Part Number **AUDI Q7 4M SERIES**
Rating **3500/350 kg**

PLACE THESE INSTRUCTIONS IN THE VEHICLE'S GLOVEBOX AFTER INSTALLATION IS COMPLETED

8. Remove and discard the 8 x bolts securing the impact bar.

Remove and discard the impact bar.



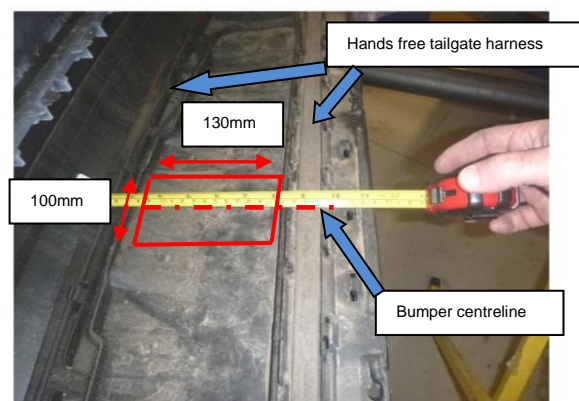
9. Secure towbar to vehicle using 8 x M12 x 1.5 x 45 bolts G10.9, complete with 1 washer per bolt.

Tighten all fasteners to a torque of 125Nm.



10. Identify centre of bumper and using the hands free tailgate harness as a bottom reference, create bumper cut 100mm wide and 130mm long as specified.

CAUTION: Ensure that the hands free tailgate harnesses are not damaged during the bumper cut.



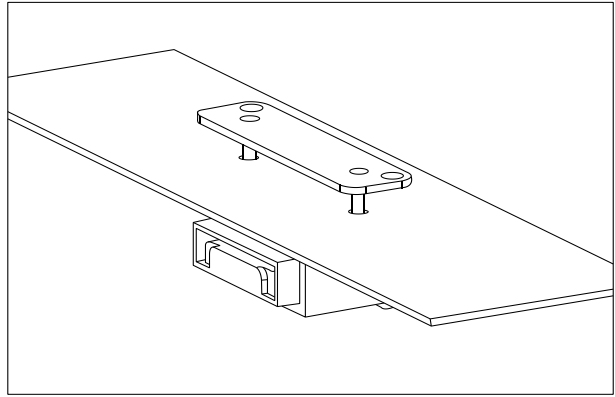
Cequent Customer Service
Ph: 1800 812 017 Fax: 03 9898 3299
Email: info@cequent.com.au
Post: PO Box 4050, Dandenong South VIC 3175



Towbar Fitting Instructions
To Suit **QTAU7L**
Part Number **AUDI Q7 4M SERIES**
Rating **3500/350 kg**

PLACE THESE INSTRUCTIONS IN THE VEHICLE'S GLOVEBOX AFTER INSTALLATION IS COMPLETED

11. At an appropriate position on the bumper, mark out and drill 2x $\varnothing 5\text{mm}$ holes 69mm apart on bumper skin to support plug bracket. Feed bracket threads through drilled holes prior to reinstalling bumper.
12. Manipulate the bumper to accept the towbar and follow steps 1 to 7 in reverse order to reinstall the bumper.



Cequent Customer Service
Ph: 1800 812 017 Fax: 03 9898 3299
Email: info@cequent.com.au
Post: PO Box 4050, Dandenong South VIC 3175




Wiring Loom Fitting Instructions
To Suit Audi Q7 4M Series
Part Number 101471-WL (QTAU7L)

Wiring Loom Installation Instructions

Audi Q7 4M Series
Part No: 101471-WL

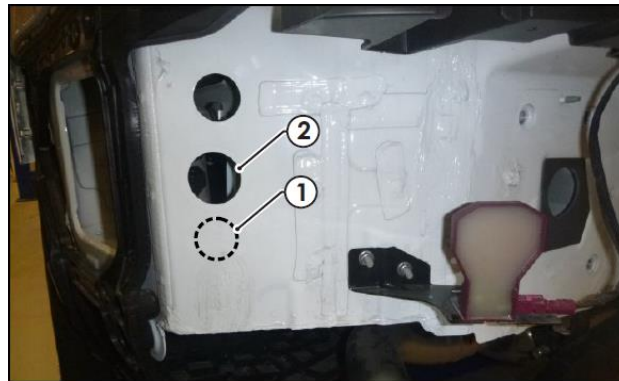
ECU: 04836
Tail Harness Length Required: 1800mm

Wiring Loom Installation Time: Approx 40 Mins

Important  Due to possible vehicle variations, always confirm any noted vehicle colour wires with a multi-meter to ensure the correct function is identified before soldering or scotch locking. For vehicle wires denoted with two colours (example; RED/GREEN) the first colour will always be the main wire colour while the second colour is the thinner trace colour on the wire.

Wiring Loom Fitting Instructions To Suit Audi Q7 4M Series Part Number 101471-WL (QTAU7L)

1. In the rear passenger area, fold down the rear and third row seats.
2. Remove the luggage compartment floor cover.
3. Remove the luggage compartment rear centre trim.
4. Remove the tool tray cover and the LHS tool tray (not indicated)
5. On the luggage compartment LHS trim, remove the torx fastener from the switch panel, carefully dislodge the trim and disconnect all switch connectors from behind the switch panel.
6. Remove the luggage compartment LHS trim.
7. Dislodge the upper 'D' pillar trim.
8. Remove the luggage compartment rear center upper trim
9. At the LHS rear quarter exterior, drill out a Ø30mm hole (1) underneath the existing larger grommet hole (2). **Ensure the interior area being drilled into is clear of any obstructions before drilling. After drilling, file down any rough edges and apply rust inhibitor (not supplied).**

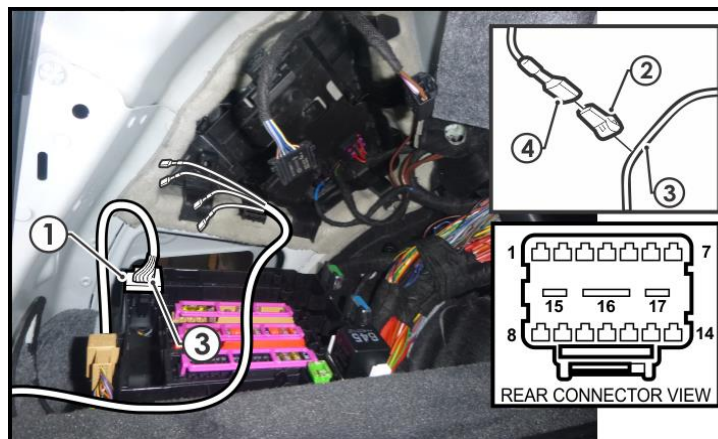


TRAILBOSS

Wiring Loom Fitting Instructions To Suit Audi Q7 4M Series Part Number 101471-WL (QTAU7L)

10. Disconnect the indicated connector (1) from the LHS rear quarter fuse panel.
11. Following the table below, connect the ezy-taps (2) to the corresponding vehicle wires (3), then connect the shorter branch trailer patch (P/No: 101471-WL) terminals (4) to the ezy-taps (2).

Function	Harness Colour	Vehicle Colour	Pin
L. IND	YELLOW	GREY / BLUE	9
TAIL / BRAKES	RED	BLACK / GREY	8
REVERSE	BLACK/WHITE	BLACK / BLUE	6
R. IND	GREEN	GREY / BLUE	13

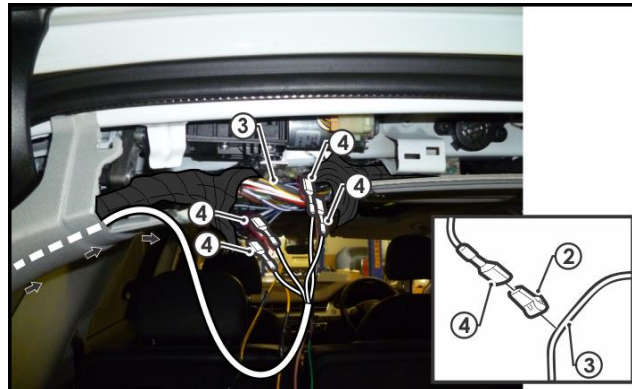


12. Secure the trailer patch ground ring terminal to the vehicle grounding location located near the rear LHS wheel arch area using the existing vehicle fastener.

Wiring Loom Fitting Instructions To Suit Audi Q7 4M Series Part Number 101471-WL (QTAU7L)

13. Route the trailer patch longer branch (1) with the terminals up to the roof lining at the rear of the vehicle.
14. Carefully cut open the vehicle harness to expose the harness wires (take caution as the sleeves will fray).
15. Following the table below, connect the ezy taps (2) to the corresponding vehicle wires (3), then connect the shorter branch trailer patch (P/No: 101471-WL) terminals (4) to the ezy-taps (2).

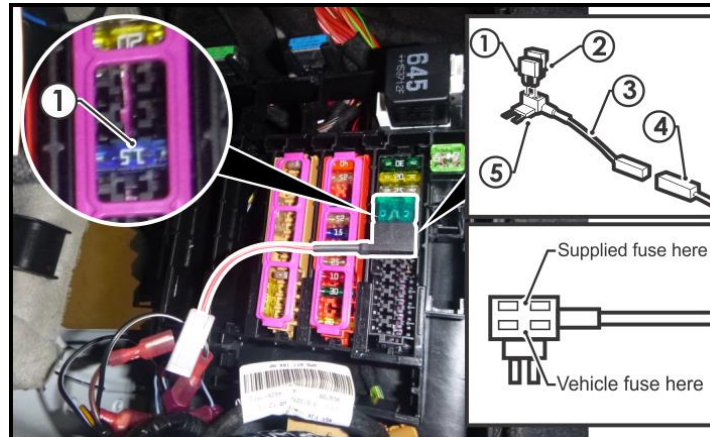
Function	Harness Colour	Vehicle Colour
L. IND	YELLOW	WHITE / GREY
BRAKES	RED	BLUE / BLACK
TAIL	BROWN / BLACK	GREY
R. IND	GREEN	GREY / BLACK



16. **Tape up the vehicle harness suitably, ensuring the harnesses inside are not tight and retain enough slack to have free movement when the rear door opens and closes.**
17. Connect the trailer patch connector to the ECU. Remove the backing from the back of the ECU and mount the ECU onto the sheet metal area.

Wiring Loom Fitting Instructions To Suit Audi Q7 4M Series Part Number 101471-WL (QTAU7L)

18. Remove the indicated vehicle 15A fuse (1). Insert the vehicle fuse 15A fuse (1) and the supplied 20A fuse (2) to the add-a-fuse harness (3). Connect the trailer patch 1-way connector (4) to the add-a-fuse harness (3). Insert the add-a-fuse harness (5) to the previously removed fuse location. **Ensure the add-a-fuse harness is oriented as shown.**



19. At the rear exterior of the vehicle, mount the tail harness socket to the towbar mounting bracket using M4 fasteners (not supplied).
20. Route the tail harness (tail length: 1800mm) across the LHS and up into the drilled out hole. Adjust the trailer patch harness grommet do that it is seated correctly and cable tie (not supplied) into place.
21. Connect the tail harness 8-way connector to the trailer patch 8-way mating connector.
22. The RPA can be disabled via a switch on the dash.
23. Test the trailer patch function using a light board or multi-meter.
24. Secure all harnesses using cable ties (not supplied).
25. Re-fit all removed parts and secure all fasteners ensuring there are no squeaks or rattles.
26. Place the fitting instructions in the glove box after fitment.



FITTING INSTRUCTIONS

Silent Anti-Rattle Hitch Pin (PR0001)

• These fitting instructions are supplied to ensure understanding of how the HITCH PIN should be fitted and used correctly.

• Once installed, we recommend **ALL** instructions are kept and placed in the vehicle glove box.

NOTE: Routine maintenance and inspection of the towbar & HITCH PIN is required. Regularly inspect for wear and check the tightness of the Hitch Pin. Follow instructions below to retighten the nut when necessary.

***Do not tow with your vehicle if the R CLIP or the HITCH PIN is loose or missing. Replacement parts are available from your Pro Series Distributor.**

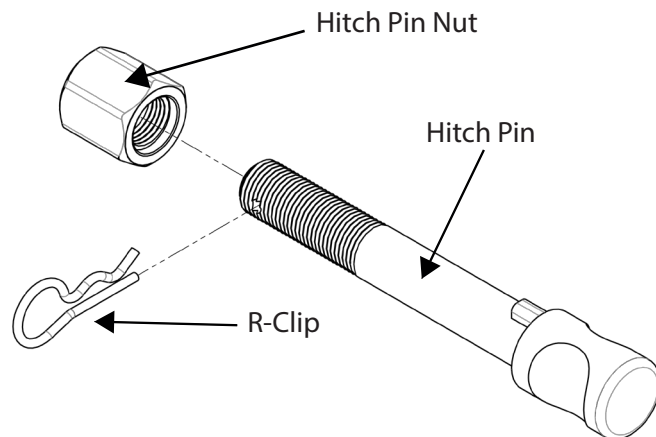


Fig 1. Silent Anti-Rattle Hitch Pin assembly

STEP 1

Insert Trailer Ball Mount (TBM) into towbar HITCHBOX, aligning hole in TBM SHANK with hole in HITCHBOX (Fig 2).

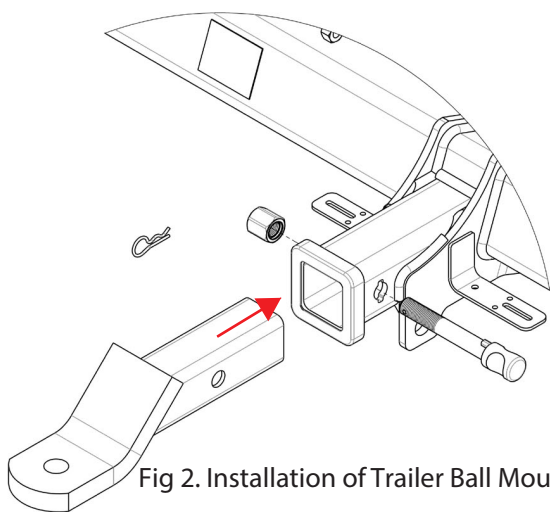


Fig 2. Installation of Trailer Ball Mount

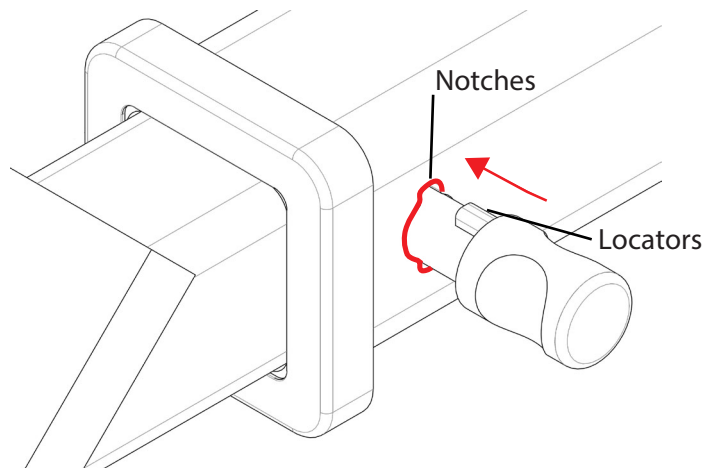


Fig 3. Silent Anti-Rattle Hitch Pin orientation

STEP 2

Insert HITCH PIN through hole in HITCHBOX and hole in TBM SHANK; ensure the LOCATORS are inserted into the NOTCHES in the HITCHBOX (Fig. 3).

STEP 3

Screw HITCH PIN NUT onto HITCH PIN; tighten HITCH PIN NUT until finger tight, ensuring TBM is restrained from movement.

STEP 4

Tighten HITCH PIN NUT by turning nut a further 1/8th of a turn in the clockwise direction using a 24mm spanner (Fig. 4).

STEP 5

Install HITCH PIN R CLIP through the hole on the HITCH PIN (Fig. 1).

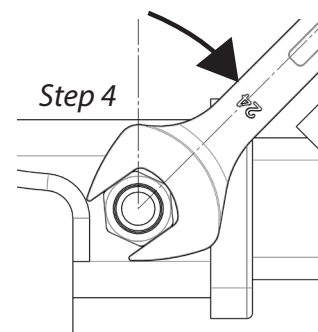


Fig 4. Tightening of Silent Anti-Rattle Hitch Pin Nut