

# TRAILBOSS

## Towbar Fitting Instructions To Suit FIAT DUCATO MAXI VAN JTD SERIES RELEASED OCTOBER 2008 ONWARDS LWB VARIANT

Part Number QTCH105L

Rating 2500/250 kg

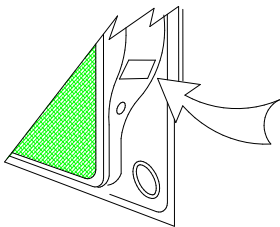
PLACE THESE INSTRUCTIONS IN THE VEHICLE'S GLOVEBOX AFTER INSTALLATION IS COMPLETED

### **WARNING:**

1. Do not, drill, cut, weld or otherwise modify the tow bar.
2. If you are using electric welding on a motor vehicle, **always** check that the vehicle is not equipped with electronic engine or instrument management equipment. Failure to do so could **destroy** any onboard computers. If in doubt, check with the vehicle's manufacturer.
3. The high tensile fasteners supplied with this product were used to achieve the specified rating. If replacement is required ensure that fasteners of the same rating & quality are used. Contact an authorised **Trailboss** dealer if further information is required.
4. If TBM is used in inverted position tow ball may make contact with rear tailgate when lowered, which could cause damage.

### **General:**

1. Ensure all hardware items have been included refer to assembly diagram.
2. It is recommended that the instructions are read through and completely understood before making any attempt to fit this product.
3. Be wary of any changes to vehicle designs or other accessories that may conflict with the installation of this product.
4. Before drilling ensure that the area is clear of fuel, electrical & other components.
5. All holes drilled into the body panels shall have all burrs & swarf removed then coated with a suitable rust preventative paint.
6. For vehicles that require the bumper to be cut. Ensure cut out area is in correct position on the vehicle prior to cutting the bumper.
7. The high tensile fasteners supplied with this product were used to achieve the specified rating. If replacement is required ensure that fasteners of the same rating & quality are used. Contact an authorized **Trailboss** dealer if further information is required.
8. Ensure that all hardware is fastened to torque list below check fasteners on regular basis.
9. Tow bar load rating sticker provided with this product shall be conspicuously located on inside rear end of the driver's door. **(See diagram below).**
10. Trailboss recommends that you check your tow ball to ensure that it complies with the Australian standards **AS 4177.2.**
11. **PLEASE NOTE:** It is advised to remove your lug or tbn when not actually towing so as to produce a clear view of the vehicles registration plate if obscured, and to also provide maximum available departure angle.
12. Pull Pin must be fit in down position.



Place load rating sticker  
inside driver's door here

**FOR TRAILER TOWING PURPOSES ONLY**  
For towing capacity details please refer to vehicle owner's manual or to the manufacturer. Overloading can void your warranties.

#### RECOMMENDED ASSEMBLY TORQUE LISTING

Diameter	Grade 8.8 Bolt
M6	9.5 Nm
M8	21.7 Nm
M10	43.4 Nm
M12	77.3Nm
M14	146 Nm
M16	189.8 Nm

### **Tow bar Maintenance and Care.**

Trailboss recommends that bolt torque's, as listed below, are routinely and regularly inspected and checked for correct tension. Replace any worn or defective parts.

We recommended to remove Tow Ball Mounts (TBM's, tongues or lugs) when not being used for any considerable length of time.

So as to avoid injury, when not towing it is suggested that the tongue, Pull Pin and R-clip are removed then stored in a safe, clean and dry place, away from excessive moisture.

Hitch Pull Pins and spring "R" clips are regularly checked for proper installation. Replace any worn or defective parts.

#### **Cequent Customer Service**

Ph: 1800 812 017 Fax: 03 9898 3299

Email: info@cequent.com.au

Post: PO Box 4050, Dandenong South VIC 3175

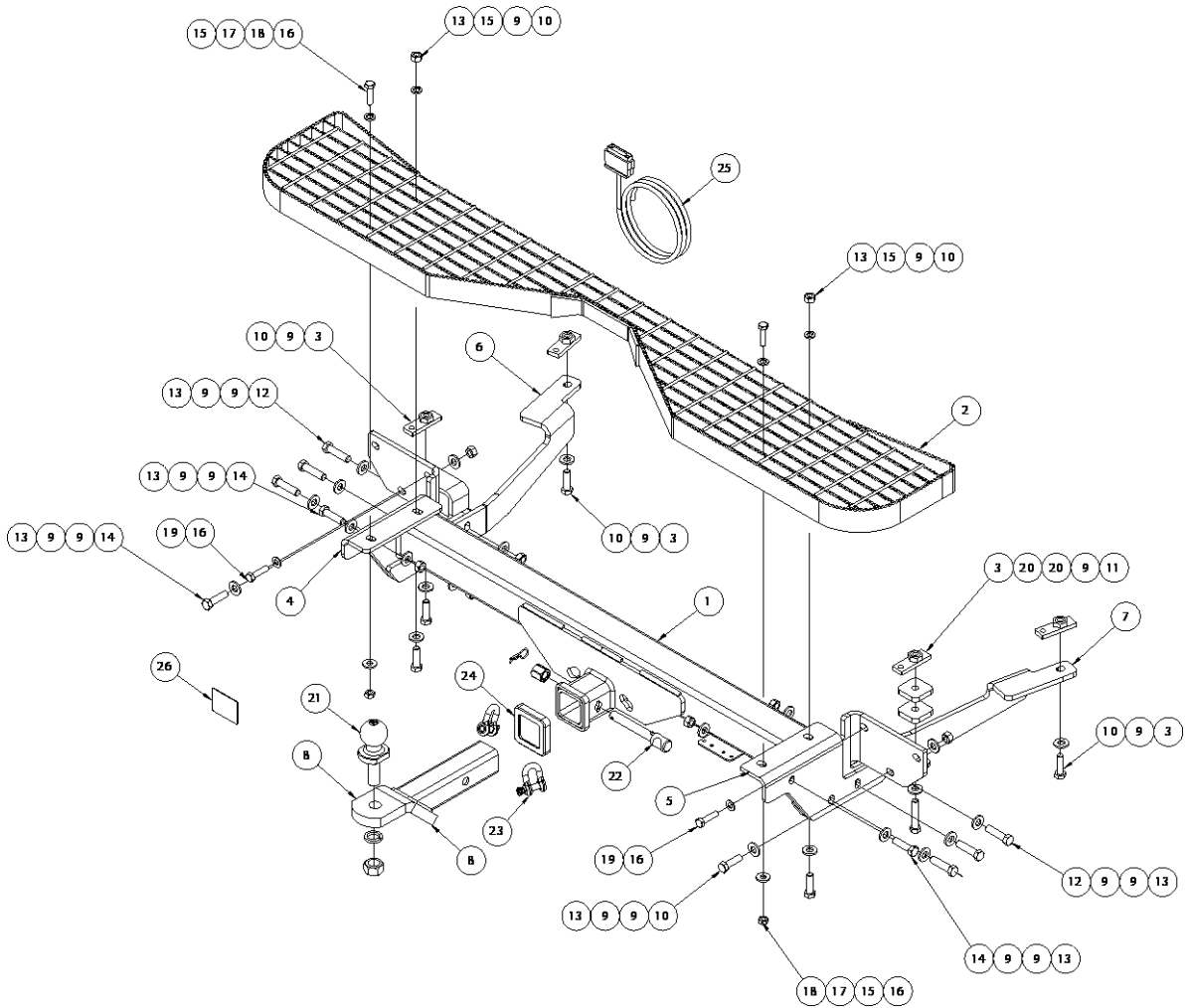


Towbar Fitting Instructions  
To Suit **FIAT DUCATO MAXI VAN JTD SERIES**  
**RELEASED OCTOBER 2008 ONWARDS LWB VARIANT**

Part Number **QTCH105L**

Rating **2500/250 kg**

PLACE THESE INSTRUCTIONS IN THE VEHICLE'S GLOVEBOX AFTER INSTALLATION IS COMPLETED





Towbar Fitting Instructions  
To Suit **FIAT DUCATO MAXI VAN JTD SERIES**  
**RELEASED OCTOBER 2008 ONWARDS LWB VARIANT**  
Part Number **QTCH105L**  
Rating **2500/250 kg**

PLACE THESE INSTRUCTIONS IN THE VEHICLE'S GLOVEBOX AFTER INSTALLATION IS COMPLETED

ITEM NO.	DESCRIPTION	QTY.
1	WELDED ASSEMBLY	1
2	WEB FORGE STEP	1
3	CHASSIS INSERT WELDED ASSEMBLY	4
4	VERTICAL CHASSIS MOUNT LHS	1
5	VERTICAL CHASSIS MOUNT RHS	1
6	SUPPORT PLATE LHS	1
7	SUPPORT PLATE RHS	1
8	TRAILER BALL MOUNT	1
9	WASHER FLAT 1/2"x1 1/8"x1/8"	26
10	BOLT HEX M12x40x1.25P	6
11	BOLT HEX M12x60x1.25P	1
12	BOLT HEX M12x50x1.25P	6
13	NUT HEX M12x1.25P	12
14	BOLT HEX M12x45x1.25P	3
15	WASHER SPRING M12x4.0x2.5	4
16	SET SCREW M10x40x1.25P	4
17	WASHER FLAT M10x25.4x3	2
18	NUT HX M10x1.25P	2
19	WAHSER FLAT M10x21x1.6	2
20	SPACER PLATE	2
21	50mm TOWBALL	1
22	ANTI-RATTLE PULL PIN ASSY SILVER	1
23	10mm "D" SHACKLE	2
24	HITCH BOX COLLAR COVER	1
25	WIRING LOOM	1
26	ACRYLIC COMPLIANCE PLATE	1



Towbar Fitting Instructions  
To Suit **FIAT DUCATO MAXI VAN JTD SERIES**  
**RELEASED OCTOBER 2008 ONWARDS LWB VARIANT**  
Part Number **QTCH105L**  
Rating **2500/250 kg**

PLACE THESE INSTRUCTIONS IN THE VEHICLE'S GLOVEBOX AFTER INSTALLATION IS COMPLETED

**INSTRUCTION:**

**BEFORE PROCEEDING WITH INSTALLATION:**

Check on the underside of the vehicle and confirm there are FOUR plastic plugs concealing mounting cavities. There are 2 on each chassis rail approximately 370mm apart.

Otherwise follow the instructions below.

1. Release rear doors to expose plastic step.
2. On the plastic step remove 4 x Torx Screws on the top side and 4 x Torx screws on the bottom side. Discard and keep in a safe place.
3. Remove the factory impact beam by removing 2 x M10 Sets Screws and 2 x M12 Nuts. Discard and keep in a safe place.
4. Loosely fit the centre section of the Towbar to the back panel of the vehicle. Using 1 x M10 X 1.25P Set Screw on the inner most mounting point and 1 x M12 x 1.25P Set Screw with Nut on the lower most mounting point.
5. On the underside of the vehicle, in line with the LHS and RHS chassis rails there are four square plugs. Remove and discard. Insert and centre the tapped plates provided for all four cavities.
6. Loosely secure the long chassis support brackets with the M12 x 1.15P Set screws and Flat washers supplied. Making sure it is sitting on the inside face of the centre section of the Towbar. Repeat for opposite side.
7. Loosely fit the vertical support bracket on the passenger side. Start by feeding the vertical set screw in first and then the remaining horizontal Set Screws. It is highly recommended to also fit the vertical Set Screws on the top of the vertical support bracket that secure to the step at this point.
8. On the Driver side, similarly to the passenger fit the vertical support bracket with the spacer plates provided to bypass the factory Tow hook. As per the previous step it is highly recommended to also fit the vertical Set Screws for the step.
9. With the bar loosely fitted torque all fasteners to specifications listed on Page 1.

Then place the step over the Towbar and secure it by torqueing the 4 x M12 x 1.25P Set Screws provided.



Wiring Loom Fitting Instructions  
To Suit Fiat Ducato  
Part Number 101035-WL

Wiring Loom Installation Instructions

Fiat Ducato  
Part No: 101035-WL

Tail Harness Length Required: 1800mm  
ECU Required: 04826

Wiring Loom Installation Time: Approx 30 Mins

## Wiring Loom Fitting Instructions To Suit Fiat Ducato Part Number 101035-WL

1. On the LHS of the cargo hold, remove the 6 screws using a Phillips head screwdriver.
2. Remove the access panel.

**Repeat for the RHS.**

3. Inside the vehicle cabin, remove the 10 roof trim screws.
4. On the LHS of the passenger door step area, remove the 10 screws.
5. Remove the door step trim.
6. On the rear passenger side, remove the 6 screws on the battery cover/lid.
7. Remove the batter cover/lid.
8. On the LHS 'C' pillar cavity, drill a Ø30mm hole (1) in the specified location.

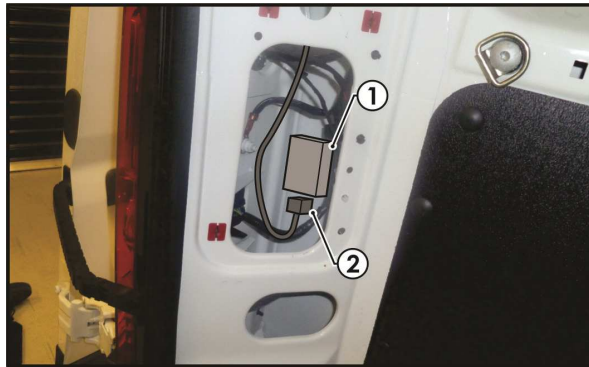


9. On the RHS 'C' pillar cavity, locate the tail light assembly connectors.
10. Disconnect the tail light connectors and connect the trailer patch 8-way connector.
11. Route the trailer patch up through the 'C' pillar towards the RHS of the vehicle.
12. Continue routing the trailer patch inside the roof cavity.
13. On the LHS of the 'C' pillar cavity, locate the tail light assembly connectors.
14. Disconnect the tail light assembly connectors and connect the trailer patch 8-way connectors.

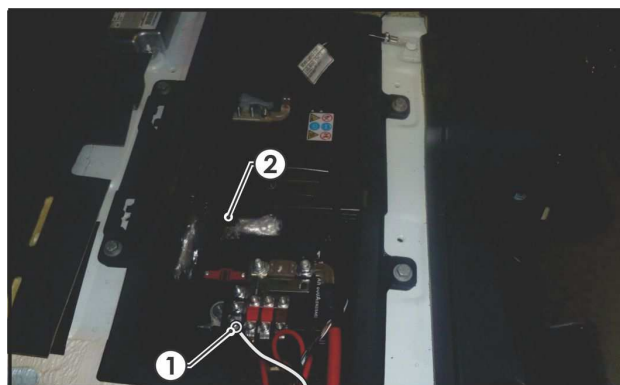
## Wiring Loom Fitting Instructions To Suit Fiat Ducato Part Number 101035-WL

15. Inside the luggage compartment access panel, apply double sided tape to the ECU (1) and secure it to the vehicle sheet metal in the area shown.
16. Connect the trailer patch 12-way connector (2) to the ECU (1).

**Note: Ensure ECU connector is facing downwards.**



17. Connect the trailer patch ring terminal to the existing vehicle grounding point.
18. Connect the power harness 1-way connector to the trailer patch 1-way breakout connector.
19. Route the power harness towards the front of the vehicle.
20. Using the existing vehicle harness, continue to feed the power harness (1) through the previously removed panel in front of the vehicle cabin area.
21. Connect the power harness (1) to the positive side of the battery (2).





Wiring Loom Fitting Instructions  
To Suit Fiat Ducato  
Part Number 101035-WL

22. Mount the trailer socket to the tow bar mounting bracket using M4 fasteners (not supplied).
23. Route the tail harness across the tow bar towards the LHS of the vehicle and up through the previously drilled out hole.
24. Ensure the tail harness grommet is seated correctly and secure in place using a cable tie (not supplied).
25. Connect the tail harness (tail length 1800mm) 8-way connector to the trailer patch mating 8-way connector.
26. Test the trailer patch function using a light board or multi meter.
27. Secure all harnesses using cable ties (not supplied).
28. Re-fit all removed parts and secure all fasteners, ensuring there are no squeaks or rattles.
29. Place the fitting instructions in the glove box after fitment.





# FITTING INSTRUCTIONS

## Silent Anti-Rattle Hitch Pin (PR0001)

• These fitting instructions are supplied to ensure understanding of how the HITCH PIN should be fitted and used correctly.

• Once installed, we recommend **ALL** instructions are kept and placed in the vehicle glove box.

**NOTE: Routine maintenance and inspection of the towbar & HITCH PIN is required. Regularly inspect for wear and check the tightness of the Hitch Pin. Follow instructions below to retighten the nut when necessary.**

**\*Do not tow with your vehicle if the R CLIP or the HITCH PIN is loose or missing. Replacement parts are available from your Pro Series Distributor.**

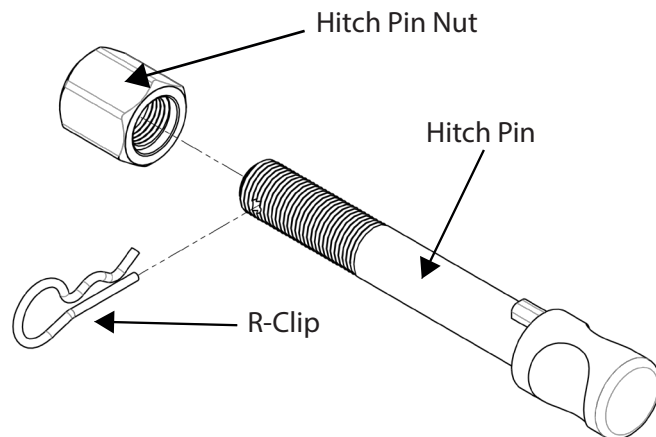


Fig 1. Silent Anti-Rattle Hitch Pin assembly

### STEP 1

Insert Trailer Ball Mount (TBM) into towbar HITCHBOX, aligning hole in TBM SHANK with hole in HITCHBOX (Fig 2).

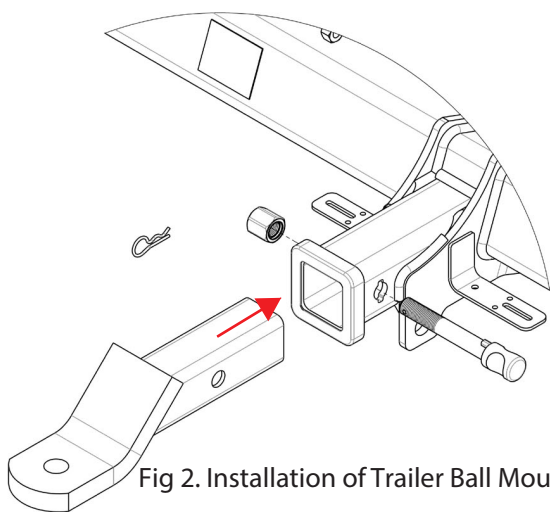


Fig 2. Installation of Trailer Ball Mount

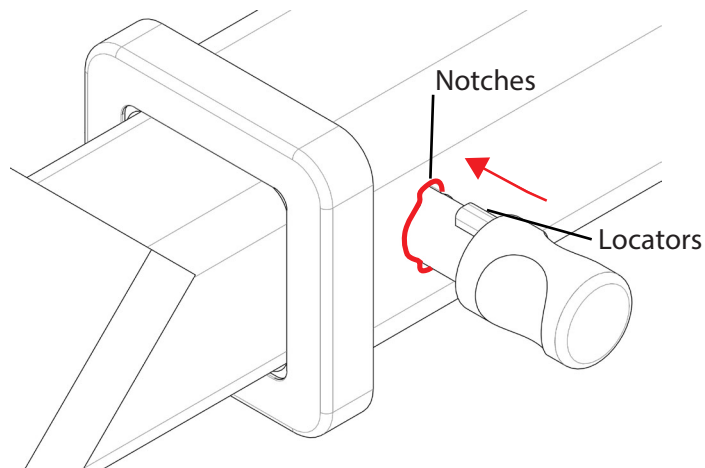


Fig 3. Silent Anti-Rattle Hitch Pin orientation

### STEP 2

Insert HITCH PIN through hole in HITCHBOX and hole in TBM SHANK; ensure the LOCATORS are inserted into the NOTCHES in the HITCHBOX (Fig. 3).

### STEP 3

Screw HITCH PIN NUT onto HITCH PIN; tighten HITCH PIN NUT until finger tight, ensuring TBM is restrained from movement.

### STEP 4

Tighten HITCH PIN NUT by turning nut a further 1/8th of a turn in the clockwise direction using a 24mm spanner (Fig. 4).

### STEP 5

Install HITCH PIN R CLIP through the hole on the HITCH PIN (Fig. 1).

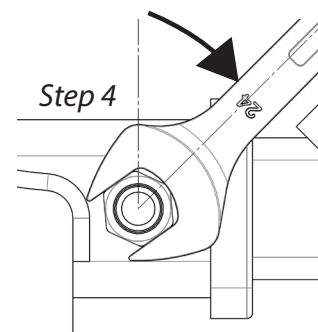


Fig 4. Tightening of Silent Anti-Rattle Hitch Pin Nut