



Towbar Fitting Instructions
To Suit **MITSUBISHI ECLIPSE CROSS YA CL4**
Part Number **QTCL656L**
Rating **1600/160 kg**

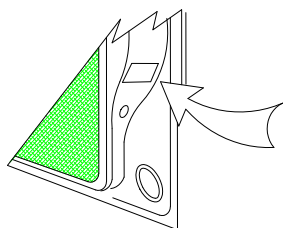
PLACE THESE INSTRUCTIONS IN THE VEHICLE'S GLOVEBOX AFTER INSTALLATION IS COMPLETED

WARNING:

1. Do not, drill, cut, weld or otherwise modify the tow bar.
2. If you are using electric welding on a motor vehicle, **always** check that the vehicle is not equipped with electronic engine or instrument management equipment. Failure to do so could **destroy** any onboard computers. If in doubt, check with the vehicle's manufacturer.
3. The high tensile fasteners supplied with this product were used to achieve the specified rating. If replacement is required ensure that fasteners of the same rating & quality are used. Contact an authorised **Trailboss** dealer if further information is required.
4. If TBM is used in inverted position tow ball may make contact with rear tailgate when lowered, which could cause damage.

General:

1. Ensure all hardware items have been included refer to assembly diagram.
2. It is recommended that the instructions are read through and completely understood before making any attempt to fit this product.
3. Be wary of any changes to vehicle designs or other accessories that may conflict with the installation of this product.
4. Before drilling ensure that the area is clear of fuel, electrical & other components.
5. All holes drilled into the body panels shall have all burrs & swarf removed then coated with a suitable rust preventative paint.
6. For vehicles that require the bumper to be cut. Ensure cut out area is in correct position on the vehicle prior to cutting the bumper.
7. The high tensile fasteners supplied with this product were used to achieve the specified rating. If replacement is required ensure that fasteners of the same rating & quality are used. Contact an authorized **Trailboss** dealer if further information is required.
8. Ensure that all hardware is fastened to torque list below check fasteners on regular basis.
9. Tow bar load rating sticker provided with this product shall be conspicuously located on inside rear end of the driver's door. **(See diagram below).**
10. Trailboss recommends that you check your tow ball to ensure that it complies with the Australian standards **AS 4177.2**.
11. **PLEASE NOTE:** It is advised to remove your LUG or TBM when not actually towing so as to produce a clear view of the vehicles registration plate if obscured, and to also provide maximum available departure angle



Place load rating sticker
inside driver's door here

FOR TRAILER TOWING PURPOSES ONLY
For towing capacity details please refer to vehicle owner's manual or to the manufacturer. Overloading can void your warranty.

RECOMMENDED ASSEMBLY TORQUE LISTING

Diameter Grade 8.8 Bolt

M6	9.5 Nm
M8	21.7 Nm
M10	43.4 Nm
M12	77.3Nm
M14	146 Nm

Tow bar Maintenance and Care.

Trailboss recommends that bolt torque's, as listed below, are routinely and regularly inspected and checked for correct tension. Replace any worn or defective parts.

We recommended to remove Tow Ball Mounts (TBM's, tongues or lugs) when not being used for any considerable length of time. So as to avoid injury, when not towing it is suggested that the tongue, Pull Pin and R-clip are removed then stored in a safe, clean and dry place, away from excessive moisture.

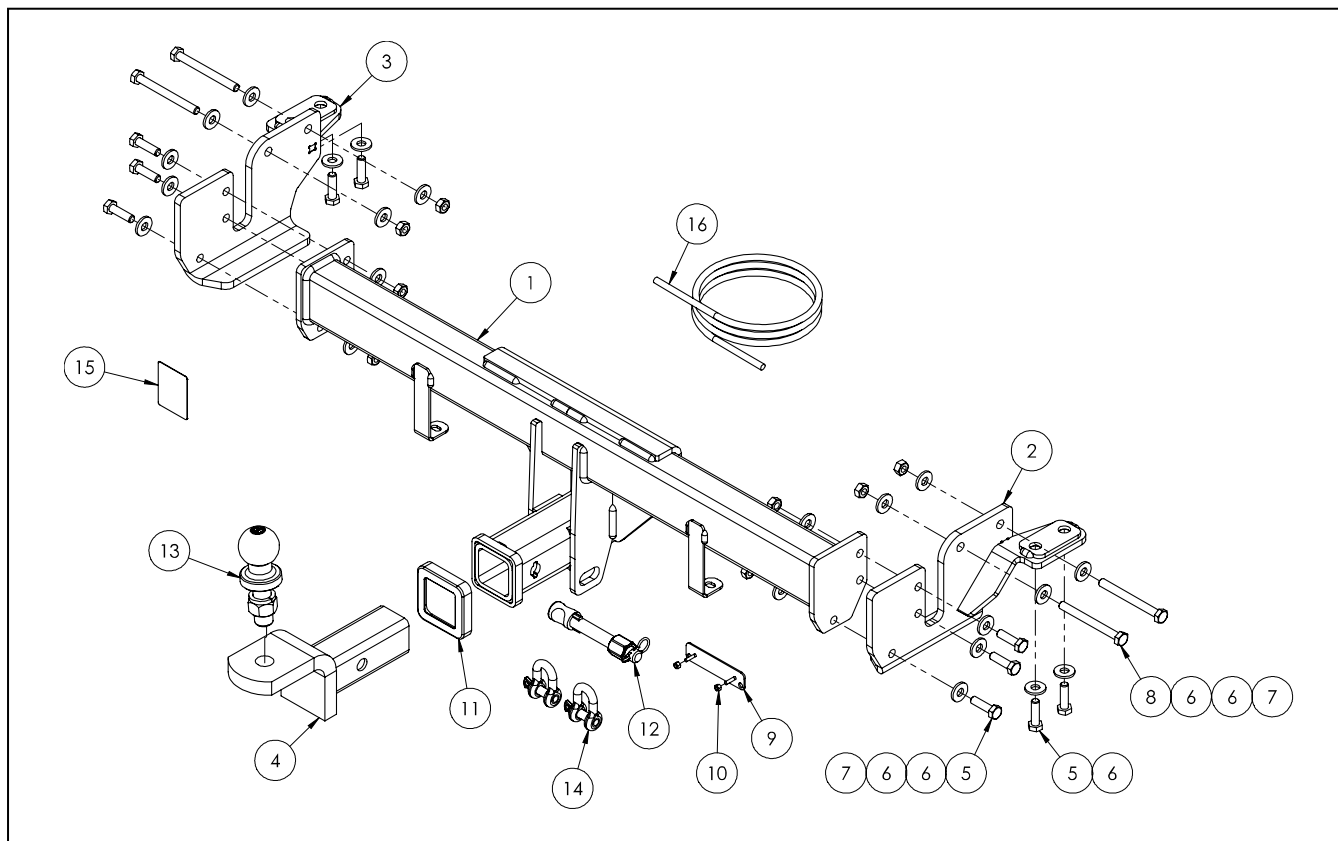
Hitch Pull Pins and spring "R" clips are regularly checked for proper installation. Replace any worn or defective parts.

Cequent Customer Service
Ph: 1800 812 017 Fax: 03 9898 3299
Email: info@cequent.com.au
Post: PO Box 4050, Dandenong South VIC 3175



Towbar Fitting Instructions
To Suit **MITSUBISHI ECLIPSE CROSS YA CL4**
Part Number **QTCL656L**
Rating **1600/160 kg**

PLACE THESE INSTRUCTIONS IN THE VEHICLE'S GLOVEBOX AFTER INSTALLATION IS COMPLETED



ITEM	DESCRIPTION	QTY	ITEM	DESCRIPTION	QTY
1	WELDED ASSEMBLY	1	9	VE PLUG BRACKET	1
2	RH SIDE ARM	1	10	NUT NYLON LOCK HEX HD M4X0.7P G8	2
3	LH SIDE ARM	1	11	HITCH BOX COLLAR COVER	1
4	TRAILER BALL MOUNT	1	12	SILENT HITCH PIN - SILVER	1
5	SET SCREW HEX HD M10x35x1.25P	10	13	TOWBALL 50mm	1
6	WASHER PLAIN M10 X 25 X 3	24	14	"D" SHACKLE 10mm	2
7	NUT HEX HD M10 X 1.25P G8	10	15	ACRYLIC COMPLIANCE LABEL	1
8	BOLT M10x100x1.25	4	16	WIRING LOOM	1

Cequent Customer Service
Ph: 1800 812 017 Fax: 03 9898 3299
Email: info@cequent.com.au
Post: PO Box 4050, Dandenong South VIC 3175



Towbar Fitting Instructions
To Suit **MITSUBISHI ECLIPSE CROSS YA CL4**
Part Number **QTCL656L**
Rating **1600/160 kg**

PLACE THESE INSTRUCTIONS IN THE VEHICLE'S GLOVEBOX AFTER INSTALLATION IS COMPLETED

1. Release tail-gate and remove 4 x hex head screws from bumper at the edge of boot cavity (2 x LHS, 2 x RHS).



2. Remove 2 x rubber stoppers around boot opening by unscrewing 2 x hex head bolts per stopper.



3. Remove 2 x hex head screws and 1 x scrivet from inside rear wheel arch on LHS.

Repeat for RHS.



Cequent Customer Service

Ph: 1800 812 017 Fax: 03 9898 3299

Email: info@cequent.com.au

Post: PO Box 4050, Dandenong South VIC 3175



Towbar Fitting Instructions
To Suit **MITSUBISHI ECLIPSE CROSS YA CL4**
Part Number **QTCL656L**
Rating **1600/160 kg**

PLACE THESE INSTRUCTIONS IN THE VEHICLE'S GLOVEBOX AFTER INSTALLATION IS COMPLETED

4. Remove 1 x hex head screw and 1 x scrivet from underside of bumper on LHS. Remove wheel arch trim.

Repeat for RHS.



5. Remove 2 x scrivets from underside of bumper near centre of vehicle.



6. Partially peel back wheel arch trim on LHS and remove the now exposed 1 x hex head screw and 1 x scrivet.

Repeat for RHS.



Cequent Customer Service

Ph: 1800 812 017 Fax: 03 9898 3299

Email: info@cequent.com.au

Post: PO Box 4050, Dandenong South VIC 3175



Towbar Fitting Instructions
To Suit **MITSUBISHI ECLIPSE CROSS YA CL4**
Part Number **QTCL656L**
Rating **1600/160 kg**

PLACE THESE INSTRUCTIONS IN THE VEHICLE'S GLOVEBOX AFTER INSTALLATION IS COMPLETED

7. Carefully peel back bumper from corners and remove ensuring to unclip any attached wiring. Set bumper aside.

8. Remove impact beam via 6 x M12 hex head bolts (3 per side). Discard bolts and impact beam.



9. Remove factory tow hook via 3 x M14 hex head bolts.

Discard tow hook and bolts.



Cequent Customer Service
Ph: 1800 812 017 Fax: 03 9898 3299
Email: info@cequent.com.au
Post: PO Box 4050, Dandenong South VIC 3175



Towbar Fitting Instructions
To Suit **MITSUBISHI ECLIPSE CROSS YA CL4**
Part Number **QTCL656L**
Rating **1600/160 kg**

PLACE THESE INSTRUCTIONS IN THE VEHICLE'S GLOVEBOX AFTER INSTALLATION IS COMPLETED

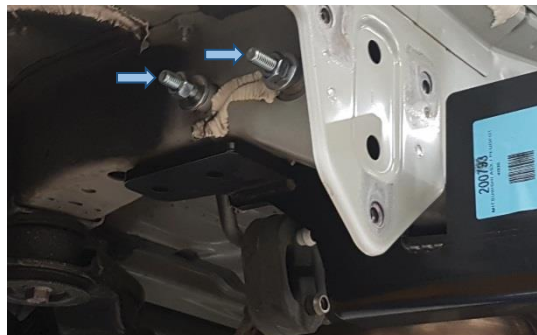
10. Remove 2 x foam inserts (one per side) from inside face of bumper by removing 4 x Phillips head screws per foam insert.

Discard foam inserts and fasteners.



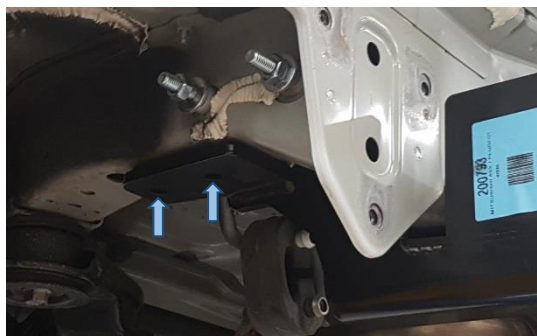
11. Loosely secure side arm to chassis rail with 2 x M10 x 100mm bolts complete with 2 x M10 washers and 1 x M10 nut per bolt.

Repeat for opposite side.



12. Loosely secure side arms to bottom face of chassis rail with 2 x M10 x 35mm set screw complete with 2 x M10 washers per bolt.

Repeat for opposite side.



Cequent Customer Service
Ph: 1800 812 017 Fax: 03 9898 3299
Email: info@cequent.com.au
Post: PO Box 4050, Dandenong South VIC 3175



Towbar Fitting Instructions
To Suit **MITSUBISHI ECLIPSE CROSS YA CL4**
Part Number **QTCL656L**
Rating **1600/160 kg**

PLACE THESE INSTRUCTIONS IN THE VEHICLE'S GLOVEBOX AFTER INSTALLATION IS COMPLETED

13. With two people, lift centre welded assembly up to side arms and loosely secure with 3 x M10 x 35mm bolts per side, complete with 2 x M10 washers and 1 x M10 nut per bolt.

Tighten all fasteners to the torques listed below:

M10 x 35mm x 1.25: **48 N.m**
M10 x 100mm x 1.25: **48 N.m**



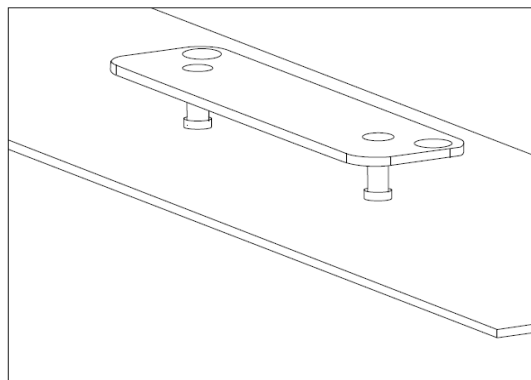
14. Identify the centreline of the bumper. Mark, measure and cut a 110mm long x 90mm wide rectangle as measured from the bottom edge of the bumper following the bumper profile.

Clean cut to ensure there are no sharp edges or burrs.



15. Mark out and drill 2 x $\varnothing 5$ mm holes 69mm apart on bumper skin to support plug bracket.

16. Re-install all components following steps 1-7 in reverse. Attached bumper to bumper tabs on towbar with factory scrivenets.



Cequent Customer Service

Ph: 1800 812 017 Fax: 03 9898 3299

Email: info@cequent.com.au

Post: PO Box 4050, Dandenong South VIC 3175



Wiring Loom Fitting Instructions
To Suit Mitsubishi Eclipse Cross
Part Number 102057-WL

Wiring Loom Installation Instructions

O k̄wdkuj k'Genr ug'Etquu

Part No: 102057-WL

ECU: 04826

Tail Harness Length Required: 1200mm

RPA Disable Information: Near driver's right knee

Electric Brake Wire Location: Near ECU connection

Wiring Loom Installation Time: Approx 45 Mins



Wiring Loom Fitting Instructions
To Suit Mitsubishi Eclipse Cross
Part Number 102057-WL

1. In the engine bay, disconnect the negative battery terminal.
2. Remove the battery positive terminal cover by releasing the tabs and lifting up.
3. Connect the supplied small fuse harness to the vehicle battery positive and connect to the vehicle pre-wire connector on the LHS behind the headlight housing.
4. In the boot, remove the floor cover carpet.
5. Remove the rear sunshade.
6. Remove the spare wheel.
7. Remove the rear tool trim by first releasing the 4 screws and pulling up firmly.

Note: To aid with the removal, it may help to push down on the rear scuff trim.

8. Remove the push clips on the rear scuff trims by pushing the centre in and using a trim removal tool to dislodge.
9. Dislodge the rear scuff trim by pulling in an upward direction.
10. On the LHS, remove the 10mm bolt securing the luggage mount.
11. Dislodge the LHS trim enough to gain access to the vehicle pre-wire.
12. Connect the 10-way white connector on the trailer patch (102057-WL) to the mating pre-wire connector on the vehicle.
13. Slightly dislodge the LHS upper trim.
14. Connect the ground wire ring terminal to the vehicle earthing point.
15. Using an alcohol wipe, clean the LHS inner sheet metal area and the underside of the ECU (04826).
16. Connect the trailer patch 12-way connector to the ECU.
17. Apply double sided tape to the ECU and secure it to the vehicle sheet metal.

Note: Mount the ECU ensuring the connector is orientated downwards.

18. Drill a 30mm grommet hole in a suitable location to enable the tail harness to be routed from the towbar to the ECU via the chassis rail access.
19. With the rear bumper removed, secure tail harness to towbar.



Wiring Loom Fitting Instructions
To Suit Mitsubishi Eclipse Cross
Part Number 102057-WL

20. Route tail harness up through chassis rail and previously removed vehicle blanking grommet.
21. Seat grommet in 30mm blanking hole and route to trailer harness blue connector on wiring loom.

Note: Keep routing clear of all sharp edges, moving parts and places of extreme heat.

Note: Ensure grommet is seated correctly and makes a good seal.

22. Connect the tail harness (tail length 1200mm) 8-way connector to the trailer patch mating 8-way connector.
23. Secure all harness using supplied Cable Ties.
24. Test the trailer patch function using a light board or multi-meter.
25. Re-fit all removed parts and secure all fasteners, ensuring there are no squeaks or rattles.
26. The RPA function can be disabled via a switch near the driver's right knee.
27. Place the fitting instructions in the glove box after fitment.



FITTING INSTRUCTIONS

Silent Anti-Rattle Hitch Pin (PR0001)

• These fitting instructions are supplied to ensure understanding of how the HITCH PIN should be fitted and used correctly.

• Once installed, we recommend **ALL** instructions are kept and placed in the vehicle glove box.

NOTE: Routine maintenance and inspection of the towbar & HITCH PIN is required. Regularly inspect for wear and check the tightness of the Hitch Pin. Follow instructions below to retighten the nut when necessary.

***Do not tow with your vehicle if the R CLIP or the HITCH PIN is loose or missing. Replacement parts are available from your Pro Series Distributor.**

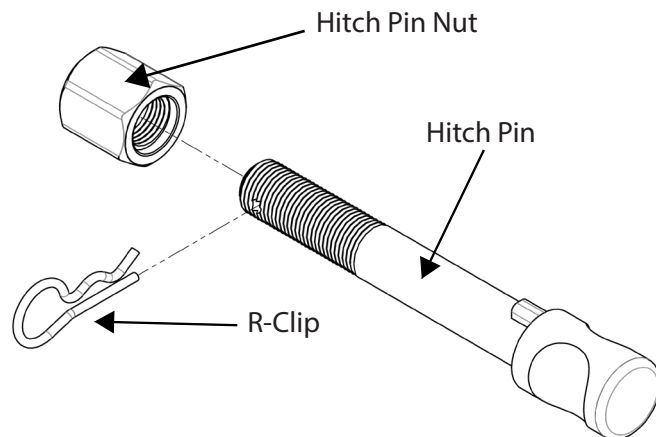


Fig 1. Silent Anti-Rattle Hitch Pin assembly

STEP 1

Insert Trailer Ball Mount (TBM) into towbar HITCHBOX, aligning hole in TBM SHANK with hole in HITCHBOX (Fig 2).

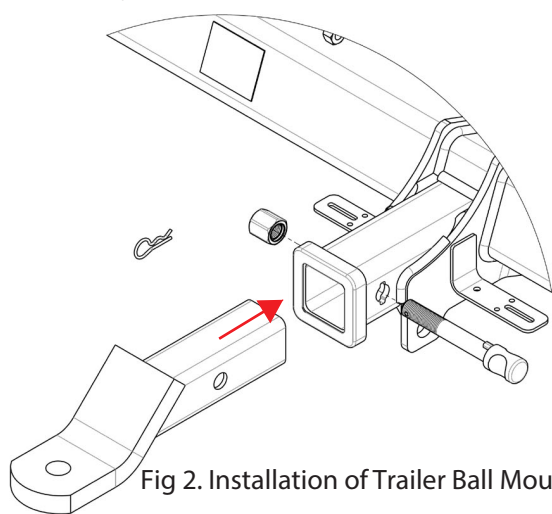


Fig 2. Installation of Trailer Ball Mount

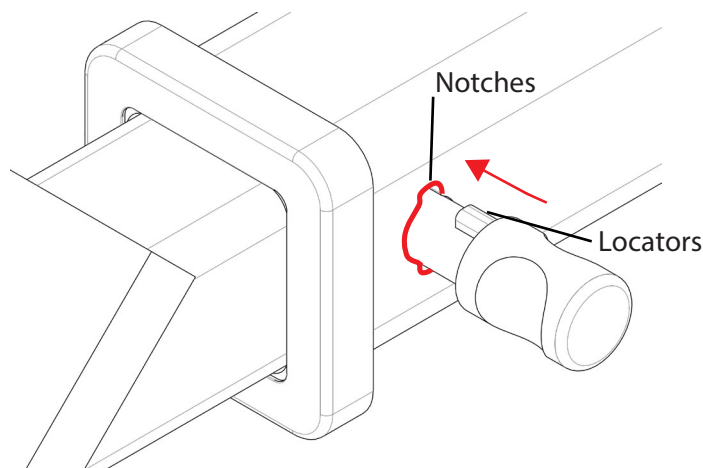


Fig 3. Silent Anti-Rattle Hitch Pin orientation

STEP 2

Insert HITCH PIN through hole in HITCHBOX and hole in TBM SHANK; ensure the LOCATORS are inserted into the NOTCHES in the HITCHBOX (Fig. 3).

STEP 3

Screw HITCH PIN NUT onto HITCH PIN ; tighten HITCH PIN NUT until finger tight, ensuring TBM is restrained from movement.

STEP 4

Tighten HITCH PIN NUT by turning nut a further 1/8th of a turn in the clockwise direction using a 24mm spanner (Fig. 4).

STEP 5

Install HITCH PIN R CLIP through the hole on the HITCH PIN (Fig. 1).

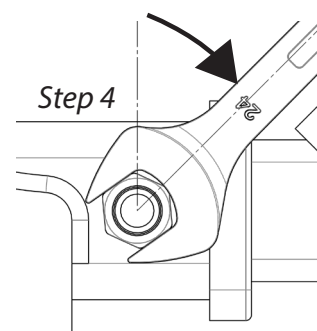


Fig 4. Tightening of Silent Anti-Rattle Hitch Pin Nut