

TRAILBOSS

Towbar Fitting Instructions To Suit **NISSAN PATHFINDER** Part Number **QTDS820** Rating **3000/300 kg**

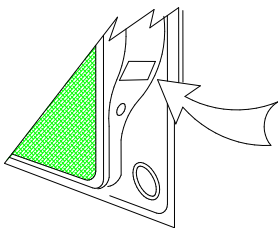
PLACE THESE INSTRUCTIONS IN THE VEHICLE'S GLOVEBOX AFTER INSTALLATION IS COMPLETED

WARNING:

1. Do not, drill, cut, weld or otherwise modify the tow bar.
2. If you are using electric welding on a motor vehicle, **always** check that the vehicle is not equipped with electronic engine or instrument management equipment. Failure to do so could **destroy** any onboard computers. If in doubt, check with the vehicle's manufacturer.
3. The high tensile fasteners supplied with this product were used to achieve the specified rating. If replacement is required ensure that fasteners of the same rating & quality are used. Contact an authorised **Trailboss** dealer if further information is required.
4. If TBM is used in inverted position tow ball may make contact with rear tailgate when lowered, which could cause damage.

General:

1. Ensure all hardware items have been included refer to assembly diagram.
2. It is recommended that the instructions are read through and completely understood before making any attempt to fit this product.
3. Be wary of any changes to vehicle designs or other accessories that may conflict with the installation of this product.
4. Before drilling ensure that the area is clear of fuel, electrical & other components.
5. All holes drilled into the body panels shall have all burrs & swarf removed then coated with a suitable rust preventative paint.
6. For vehicles that require the bumper to be cut. Ensure cut out area is in correct position on the vehicle prior to cutting the bumper.
7. The high tensile fasteners supplied with this product were used to achieve the specified rating. If replacement is required ensure that fasteners of the same rating & quality are used. Contact an authorized **Trailboss** dealer if further information is required.
8. Ensure that all hardware is fastened to torque list below check fasteners on regular basis.
9. Tow bar load rating sticker provided with this product shall be conspicuously located on inside rear end of the driver's door. **(See diagram below).**
10. Trailboss recommends that you check your tow ball to ensure that it complies with the Australian standards **AS 4177.2**.
11. **PLEASE NOTE:** It is advised to remove your LUG or TBM when not actually towing so as to produce a clear view of the vehicles registration plate if obscured, and to also provide maximum available departure angle



Place load rating sticker
inside driver's door here

FOR TRAILER TOWING PURPOSES ONLY
For towing capacity details please refer to vehicle owner's manual or to the manufacturer. Overloading can void your warranties.

RECOMMENDED ASSEMBLY TORQUE LISTING

Diameter	Grade 8.8 Bolt
M6	9.5 Nm
M8	21.7 Nm
M10	43.4 Nm
M12	77.3Nm
M14	146 Nm
M16	189.8 Nm

Tow bar Maintenance and Care.

Trailboss recommends that bolt torque's, as listed below, are routinely and regularly inspected and checked for correct tension. Replace any worn or defective parts.

We recommended to remove Tow Ball Mounts (TBM's, tongues or lugs) when not being used for any considerable length of time.

So as to avoid injury, when not towing it is suggested that the tongue, Pull Pin and R-clip are removed then stored in a safe, clean and dry place, away from excessive moisture.

Hitch Pull Pins and spring "R" clips are regularly checked for proper installation. Replace any worn or defective parts.

Cequent Customer Service

Ph: 1800 812 017 Fax: 03 9898 3299

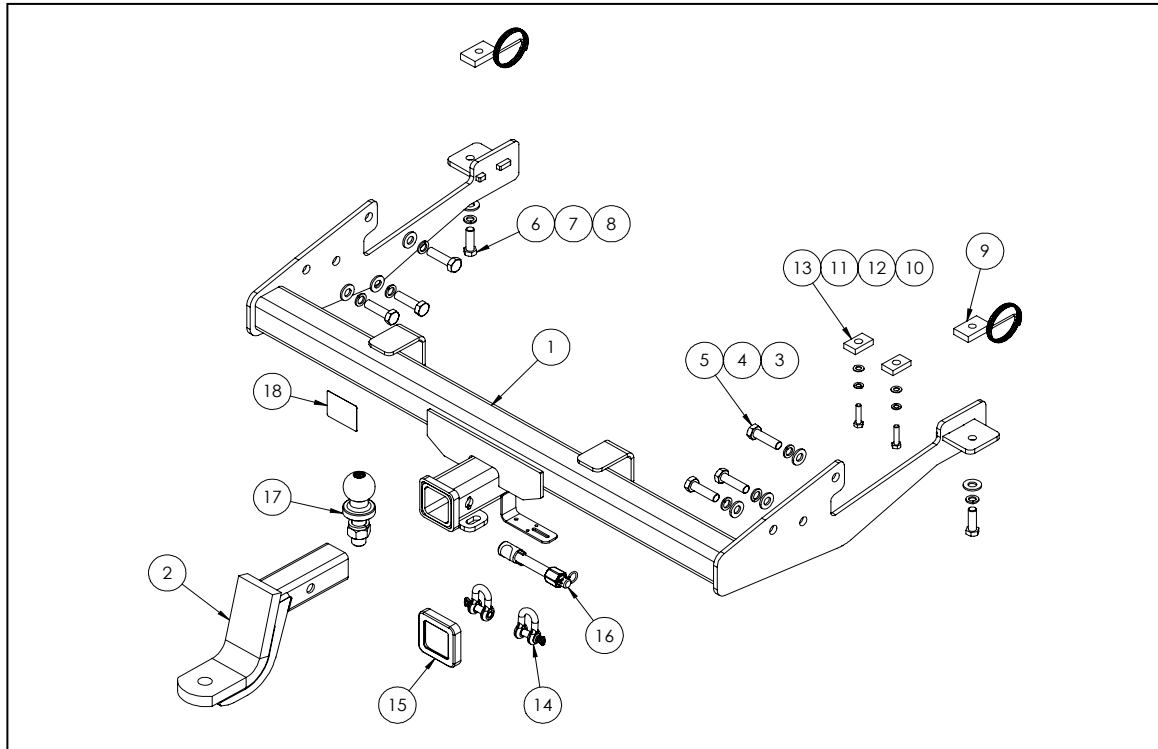
Email: info@cequent.com.au

Post: PO Box 4050, Dandenong South VIC 3175

TRAILBOSS

Towbar Fitting Instructions
 To Suit **NISSAN PATHFINDER**
 Part Number **QTDS820**
 Rating **3000/300 kg**

PLACE THESE INSTRUCTIONS IN THE VEHICLE'S GLOVEBOX AFTER INSTALLATION IS COMPLETED



ITEM	DESCRIPTION	QTY
1	WELDED ASSY NISSAN PATHFINDER	1
2	TBM ASSEMBLY	1
3	FT WASHER M14x28x3 Z/P	6
4	FT SEC SPRING WASHER M14x4.0x2.5	6
5	BOLT M14x50x1.5P	6
6	SET SCREW M12x40x1.75P G8.8	2
7	WSHR SPRING FT SEC M12x4.0x2.5MM	2
8	WASHER FLAT M12	2
9	TAPPED PLATE AND WIRE ASSY	2

ITEM	DESCRIPTION	QTY
10	BOLT HX HD M8x35x1.25P G8.8	2
11	WASHER FT M8x17x1.20 Z/P	2
12	WASHR SPRING FT SEC M8x3.0x2.0MM	2
13	PLATE 25x10x40 (DIA 13)	2
14	"D" SHACKLE 10MM	2
15	HITCH BOX COLLAR COVER	1
16	SILENT HITCH PIN – SILVER	1
17	TOWBALL 50MM	1
18	ACRYLIC COMPLIANCE LABEL	1

Cequent Customer Service
 Ph: 1800 812 017 Fax: 03 9898 3299
 Email: info@cequent.com.au
 Post: PO Box 4050, Dandenong South VIC 3175

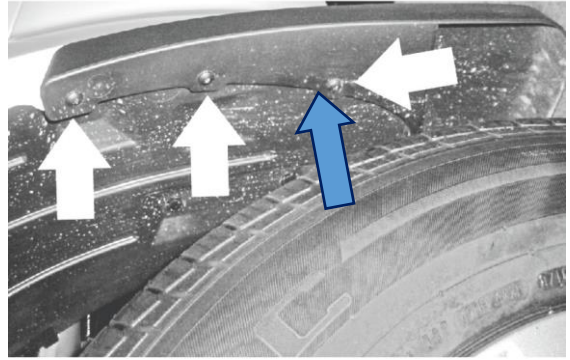
TRAILBOSS

Towbar Fitting Instructions
To Suit **NISSAN PATHFINDER**
Part Number **QTDS820**
Rating **3000/300 kg**

PLACE THESE INSTRUCTIONS IN THE VEHICLE'S GLOVEBOX AFTER INSTALLATION IS COMPLETED

1. Remove screws x 4 from the mud flap on the wheel arch.

Repeat for opposite side.



2. Remove 1 x screw from behind the mud flap and remove the mud flap.

Repeat for opposite side.



3. Remove self-tappers from wheel arch & lower skirt of bumper.

Repeat for opposite side.



Cequent Customer Service
Ph: 1800 812 017 Fax: 03 9898 3299
Email: info@cequent.com.au
Post: PO Box 4050, Dandenong South VIC 3175

TRAILBOSS

Towbar Fitting Instructions
To Suit **NISSAN PATHFINDER**
Part Number **QTDS820**
Rating **3000/300 kg**

PLACE THESE INSTRUCTIONS IN THE VEHICLE'S GLOVEBOX AFTER INSTALLATION IS COMPLETED

4. Remove tail-lights by removing 2 x bolts. Refer to manufacturer's manual for details.

Repeat for opposite side.

Note: Carefully detach the bulbs before removing the lights.

5. Turn the bumper lock pin after removing the lights to release.

Repeat for opposite side.



6. Remove 2 x screws from underneath the bumper.

Repeat for opposite side.

7. Remove bumper.

8. Remove the bumper foam support.



Cequent Customer Service

Ph: 1800 812 017 Fax: 03 9898 3299

Email: info@cequent.com.au

Post: PO Box 4050, Dandenong South VIC 3175

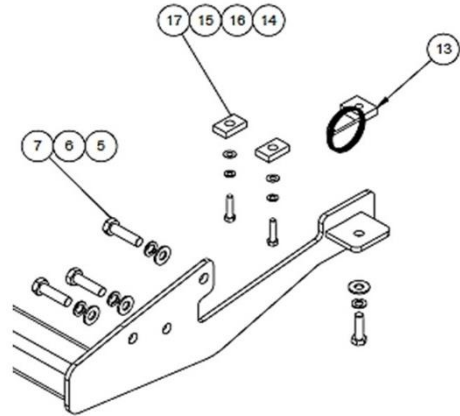
Towbar Fitting Instructions
To Suit **NISSAN PATHFINDER**
Part Number **QTDS820**
Rating **3000/300 kg**

PLACE THESE INSTRUCTIONS IN THE VEHICLE'S GLOVEBOX AFTER INSTALLATION IS COMPLETED

9. Lift the towbar to the vehicle and align the side arms with the chassis rail mounting points. Fit with the relevant fasteners outlined on Page 3.

10. **If required** fit spacer plates between chassis and exhaust bracket to provide additional clearance for exhaust.

Torque all bolts to the corresponding value outlined on Page 2.



11. Establish the centreline of the bumper and make a cut 85mm wide x 125mm in height starting from the bottom edge of the bumper.

Note: Make sure to cut the bumper as well as the internal plastic reinforcing.

12. Fit the bumper and tail-lights back on in the reverse order.



Cequent Customer Service
Ph: 1800 812 017 Fax: 03 9898 3299
Email: info@cequent.com.au
Post: PO Box 4050, Dandenong South VIC 3175