



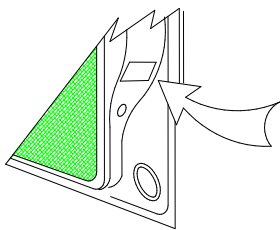
Towbar Fitting Instructions
 To Suit **NISSAN NAVARA 2001-3/2009**
 Part Number **QTDS842L**
 Rating **2800-280 kg**

WARNING:

1. Do not, drill, cut, weld or otherwise modify the tow bar.
2. If you are using electric welding on a motor vehicle, **always** check that the vehicle is not equipped with electronic engine or instrument management equipment. Failure to do so could **destroy** any onboard computers. If in doubt, check with the vehicle's manufacturer.

General:

1. Ensure all hardware items have been included refer to assembly diagram.
2. It is recommended that the instructions are read through and completely understood before making any attempt to fit this product.
3. Be wary of any changes to vehicle designs or other accessories that may conflict with the installation of this product.
4. Before drilling ensure that the area is clear of fuel, electrical & other components.
5. All holes drilled into the body panels shall have all burrs & swarf removed then coated with a suitable rust preventative paint.
6. For vehicles that require the bumper to be cut. Ensure cut out area is in correct position on the vehicle prior to cutting the bumper.
7. The high tensile fasteners supplied with this product were used to achieve the specified rating. If replacement is required ensure that fasteners of the same rating & quality are used. Contact an authorized **Trailboss** dealer if further information is required.
8. Ensure that all hardware is fastened to torque list below check fasteners on regular basis.
9. Tow bar load rating sticker provided with this product shall be conspicuously located on inside rear end of the driver's door. **(See diagram below).**
10. Trailboss recommends that you check your tow ball to ensure that it complies with the Australian standards **AS 4177.2.**
11. **PLEASE NOTE:** It is advised to remove your lug or tbn when not actually towing so as to produce a clear view of the vehicles registration plate if obscured, and to also provide maximum available departure angle



Place load rating sticker
inside driver's door here

FOR TOWING PURPOSES ONLY
 For towing capacity details please refer to vehicle owner's manual or to the manufacturer. Overloading can void your warranties.

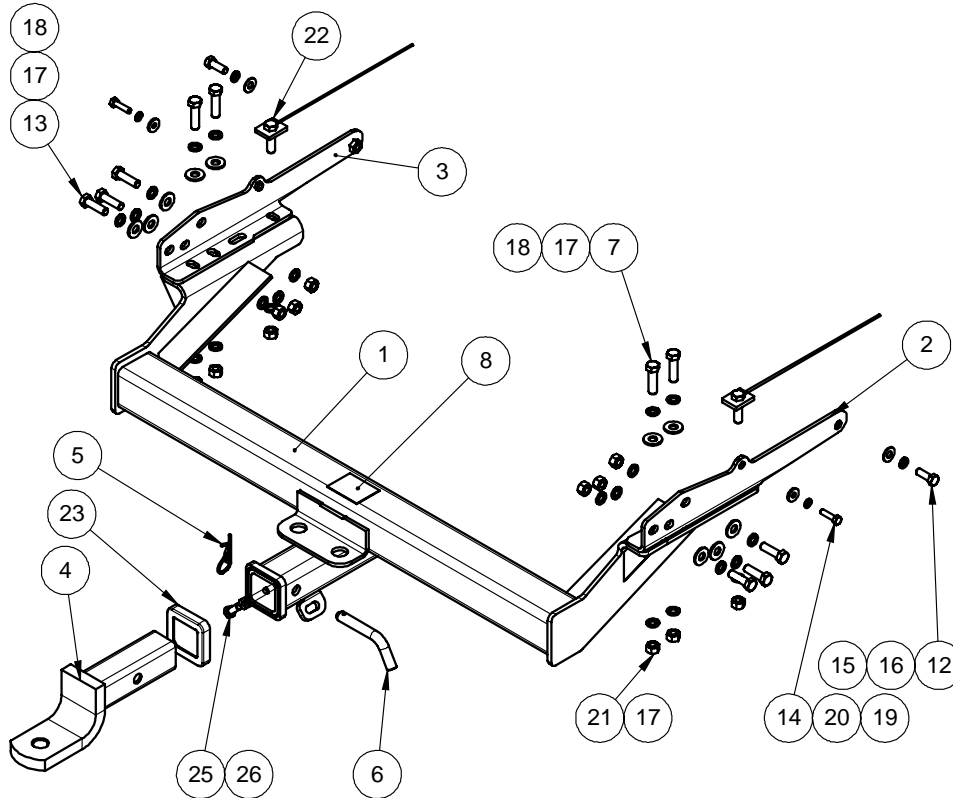
RECOMMENDED ASSEMBLY TORQUE LISTING	
<u>Diameter</u>	<u>Grade 8.8 Bolt</u>
M6	9.5 Nm
M8	21.7 Nm
M10	43.4 Nm
M12	77.3 Nm
M14	146.0 Nm
M16	189.8 Nm

Tow bar Maintenance and Care.

Trailboss recommends that bolt torque's, as listed below, are routinely and regularly inspected and checked for correct tension. Replace any worn or defective parts.
 We recommended to remove Tow Ball Mounts (TBM's, tongues or lugs) when not being used for any considerable length of time.
 So as to avoid injury, when not towing it is suggested that the tongue, Pull Pin and R-clip are removed then stored in a safe, clean and dry place, away from excessive moisture.
 Hitch Pull Pins and spring "R" clips are regularly checked for proper installation. Replace any worn or defective parts.

TRAILBOSS

Towbar Fitting Instructions
 To Suit **NISSAN NAVARA 2001-3/2009**
 Part Number **QTDS842L**
 Rating **2800-280 kg**



QTY.	DESCRIPTION	ITEM NO.
1	WELD ASSY NISSAN NAVARA D22T 2009	1
1	DRIVER SIDE CHASSIS BRACKET	2
1	PASSENGER SIDE CHASSIS PLATE	3
1	TRAILER BALL MOUNT 21196 P/COAT	4
1	SPRING COTTER PIN	5
1	PULL PIN	6
4	M12 x 45 1.75P BOLT	7
1	COMPLIANCE PLATE	8
1	BOLT PACK	9
1	PLASTIC SHEET BAG	10
1	FITTING INSTRUCTIONS	11
2	M10 x 30 1.5P BOLT	12
6	BOLT M12-1.75x40 GR8.8	13
2	M8 X 30 BOLT	14
2	Washer Flat M10 x 23 x 2 z/p	15
2	M10 X 3.5 X 2.2 SPRING WSHR	16
22	M12 X 4.0 X 2.5 SPRING WASHER	17
10	Washer M12x28.8x3	18
2	M8 X 22 X 3.3 FLAT WASHER	19
2	Wshr spring ft sec M8 x 3.0x2.0 z/p	20
12	M12-1.75 Z/P HX NUTS	21
2	LOOSE PLATE AND BOLT	22
1	HITCH BOX COLLAR COVER	23
1	LRL	24
1	BOLT M10-1.50 x 25	25
1	NUT M10 x 1.5 Z/P HX NUTS	26

Cequent Customer Service
 Ph: 1800 812 017 Fax: 03 9898 3299
 Email: info@cequent.com.au
 Post: PO Box 4050, Dandenong South VIC 3175



Towbar Fitting Instructions
To Suit **NISSAN NAVARA 2001-3/2009**
Part Number **QTDS842L**
Rating **2800-280 kg**

1. Models with rear bumper bar - remove bumper bar.
2. Models with ute body - remove lower tailgate panel.
3. Insert inner chassis brace on inside of chassis rails.
4. Insert M10x30 bolts through chassis existing hole into captive nut on brace - loosely.
5. Insert M8x 30 bolts through chassis existing hole into captive nut and brace - loosely.
6. Refit rear panel and refit bumper bar using original bracket and nut - loosely.
7. Lift towbar into position by locating most rearward hole in towbar side arm with most rearward holes in brace and chassis.
8. Models with no bumper bar - insert 3xM12x45 bolts/nuts through vertical face of chassis rail and brace - loosely.
9. Hold towbar towards rear of vehicle as far as possible and tighten rearmost 4 bolts to torque listings.
10. Using remaining 2 slots on side arms as guide drill 12mm hole on inner face of slots.
11. Tighten all bolts to torque listing above.
12. Towbar rating sticker to be conspicuously located on the inside rear end of the driver's door. (See diagram above, please ensure the appropriate label used)



Towbar Fitting Instructions
To Suit **NISSAN NAVARA 2001-3/2009**
Part Number **QTDS842L**
Rating **2800-280 kg**

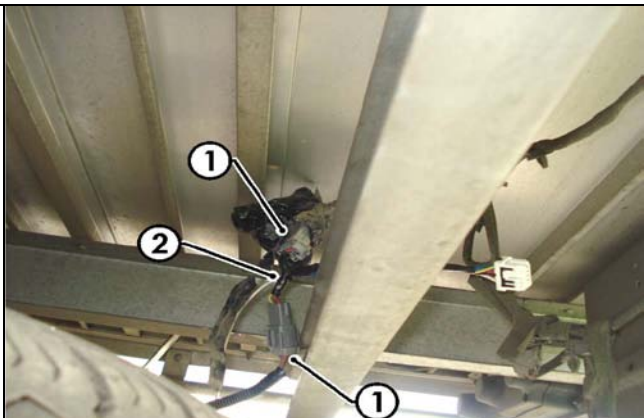
Wiring Loom Installation Instructions

NISSAN D22 NAVARA
Part No: 100111-WL

Tail Harness Length Required: 1200mm

Wiring Loom Installation Time: Approx 15 Mins

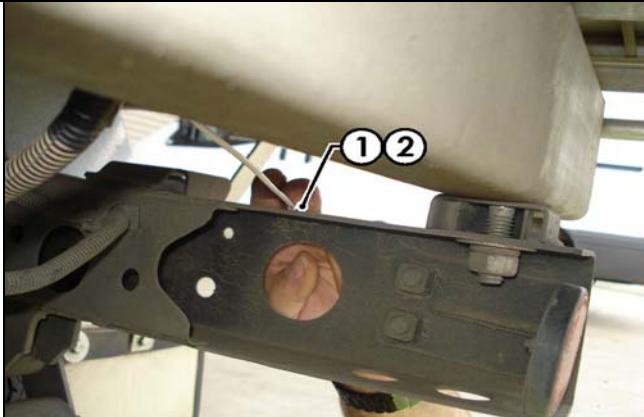
1. At the rear right hand side of the vehicle underneath the tray, disconnect the tail light connectors (1) and patch the Trailer Patch Harness (P/No: 100111-WL) connectors in between (2).



Towbar Fitting Instructions
To Suit **NISSAN NAVARA 2001-3/2009**
Part Number **QTDS842L**
Rating **2800-280 kg**

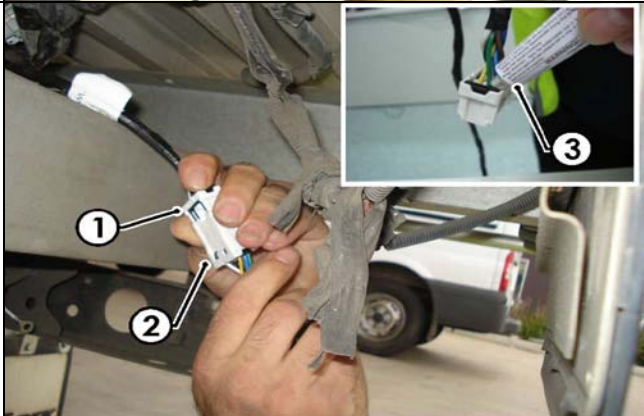
2. Drill (or by using a tech screw) into the indicated area on the chassis rail (1) and secure the Trailer Patch Harness ground ring terminal (2).

NOTE: Ensure a good ground is achieved.



3. On the Tail Harness (tail length 1200mm) (1) and mating 8-way male connector (2), apply electrical grease or silicon on to the back of the connectors to make them water proof (3).

Connect the tail harness (1) and Trailer Patch Harness connectors (2) together.



4. Using fasteners, mount the tail harness socket onto the towbar mounting plate.
5. Bundle up any excess harness and cable tie onto the support bar or towbar.
6. Test trailer harness function using trailer light board or multimeter.
7. Secure all harnesses to the vehicle using cable ties.
8. Refit all removed parts and secure all fasteners ensuring there are no squeaks or rattles.
9. Please place the fitting instructions in the glove box after installation.

