

TRAILBOSS

Towbar Fitting Instructions
To Suit **NISSAN PATROL Y62 01/2013 ON**
Part Number **QTDS851L**
Rating **3500/350 kg**

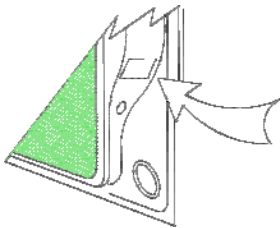
PLACE THESE INSTRUCTIONS IN THE VEHICLE'S GLOVEBOX AFTER INSTALLATION IS COMPLETE

WARNING:

1. Do not, drill, cut, weld or otherwise modify the tow bar.
2. If you are using electric welding on a motor vehicle, **always** check that the vehicle is not equipped with electronic engine or instrument management equipment. Failure to do so could **destroy** any onboard computers. If in doubt, check with the vehicle's manufacturer.
3. The high tensile fasteners supplied with this product were used to achieve the specified rating. If replacement is required ensure that fasteners of the same rating & quality are used. Contact an authorised **Trailboss** dealer if further information is required.

General:

1. Ensure all hardware items have been included refer to assembly diagram.
2. It is recommended that the instructions are read through and completely understood before making any attempt to fit this product.
3. Be wary of any changes to vehicle designs or other accessories that may conflict with the installation of this product.
4. Before drilling ensure that the area is clear of fuel, electrical & other components.
5. All holes drilled into the body panels shall have all burrs & swarf removed then coated with a suitable rust preventative paint.
6. For vehicles that require the bumper to be cut. Ensure cut out area is in correct position on the vehicle prior to cutting the bumper.
7. The high tensile fasteners supplied with this product were used to achieve the specified rating. If replacement is required ensure that fasteners of the same rating & quality are used. Contact an authorized **Trailboss** dealer if further information is required.
8. Ensure that all hardware is fastened to torque list below check fasteners on regular basis.
9. Tow bar load rating sticker provided with this product shall be conspicuously located on inside rear end of the driver's door. **(See diagram below)**.
10. Trailboss recommends that you check your tow ball to ensure that it complies with the Australian standards **AS 4177.2**.
11. **PLEASE NOTE:** It is advised to remove your lug or tbm when not actually towing so as to produce a clear view of the vehicles registration plate if obscured, and to also provide maximum available departure angle
12. Pull Pin must be fit in down position.



Place load rating sticker
inside driver's door here

FOR TRAILER TOWING PURPOSES ONLY
For towing capacity details please refer to vehicle owner's manual or to the manufacturer. Overloading can void your warranties.

RECOMMENDED ASSEMBLY TORQUE LISTING

Diameter	Grade 8.8 Bolt
M6	9.5 Nm
M8	21.7 Nm
M10	43.4 Nm
M12	77.3Nm
M14	146 Nm
M16	189.8 Nm

Tow bar Maintenance and Care.

Trailboss recommends that bolt torque's, as listed below, are routinely and regularly inspected and checked for correct tension. Replace any worn or defective parts.

We recommended to remove Tow Ball Mounts (TBM's, tongues or lugs) when not being used for any considerable length of time.

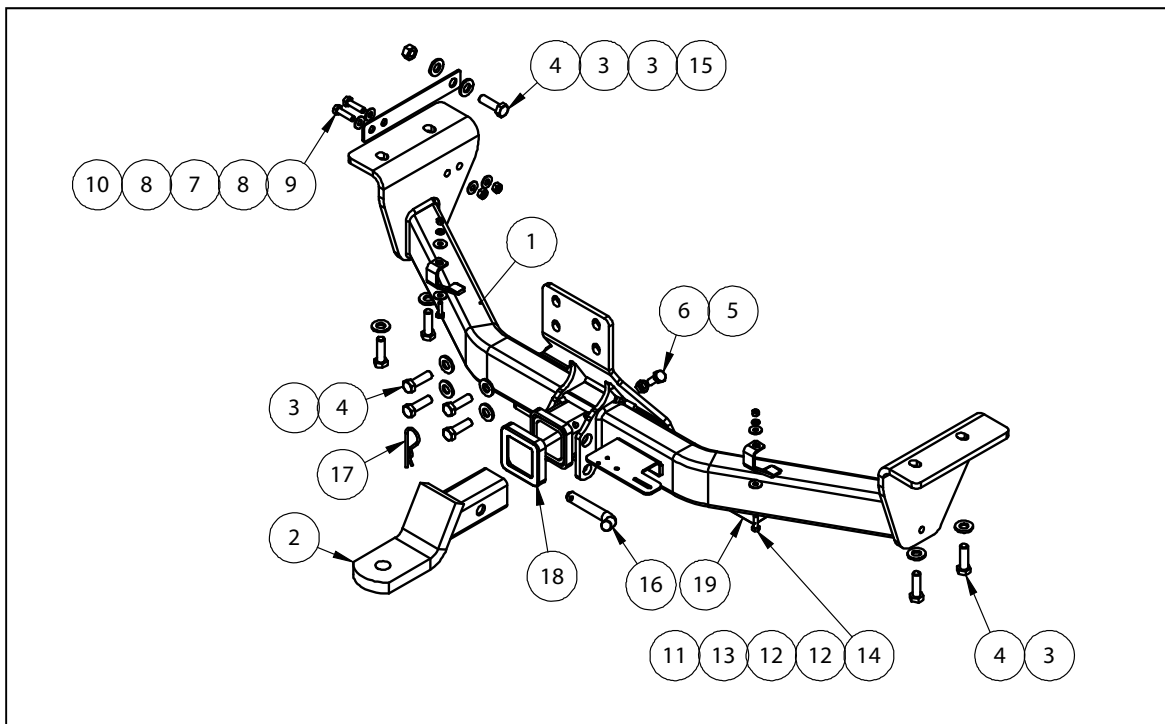
So as to avoid injury, when not towing it is suggested that the tongue, Pull Pin and R-clip are removed then stored in a safe, clean and dry place, away from excessive moisture.

Hitch Pull Pins and spring "R" clips are regularly checked for proper installation. Replace any worn or defective parts.

TRAILBOSS


Towbar Fitting Instructions
 To Suit **NISSAN PATROL Y62 01/2013 ON**
 Part Number **QTDS851L**
 Rating **3500/350 kg**

PLACE THESE INSTRUCTIONS IN THE VEHICLE'S GLOVEBOX AFTER INSTALLATION IS COMPLETE




QTY	DESCRIPTION	ITEM NO
1	WELDED ASSY	1
1	CLASS 4 TBM	2
10	WASHER FLAT 1/2"x1 1/8"x1/8	3
9	BOLT M12-1.25x40mm	4
1	HEX NUT M10x1.5	5
1	BOLT M10-1.50x25	6
1	SUPPORT BRACKET	7
4	WSHR FT M8x19.5x1.60 Z/P	8
2	M8-1.25x30mm BOLT	9
2	M8-1.25 NUT	10
2	HEX NUT M6x1.0	11
4	1-4x3-4x16g BRT FT WASHER	12
2	M6 SPRING WASHER	13
2	BOLT M6x20	14
1	M12x1.25 HEX NUT PC8	15
1	PULL PIN	16
1	SPRING COTTER PIN ASSY	17
1	HITCH BOX COLLAR COVER	18
1	ACRYLIC CP LABEL	19


ADDITIONAL ITEMS




WIRING LOOM



FITTING INSTRUCTION



BUMPER TRIM



LR LABEL

TRAILBOSS

Towbar Fitting Instructions
To Suit **NISSAN PATROL Y62 01/2013 ON**
Part Number **QTDS851L**
Rating **3500/350 kg**

PLACE THESE INSTRUCTIONS IN THE VEHICLE'S GLOVEBOX AFTER INSTALLATION IS COMPLETE

INSTRUCTION:

1. Remove 5x Screws from Rear Wheel Mud Flap in the inside of the Wheel Arc for both the LH & RH side. Also remove 1x Screw located behind the Mud Flap on the underside of the Bumper.
2. Remove 4x Bolts from the underside of the Bumper Bar for both the LH&RH side.
3. Open Rear Boot Door and remove Plastic Side Covers from the Rear Lights and remove the 2x Bolts from Rear Light for both the LH & RH side.
4. Note the Rear Lights have plastic pins located on their sides, therefore for removal of the Rear Lights, they must be firmly pushed outwards to the side to release from side Clips.
5. Remove 1x Bolt and 1x Scrivet located behind the Rear Lights for both the LH&RH side. Then pull firmly on bar to release from Clips.
6. Remove from both sides all Bumper Tubs and shipping Hook. Offer Towbar to Vehicle and loosely bolt it in.
Note: Moving the Spare Tire as far forward as possible may be need.
7. Tighten all Bolts to Torque Specifications provided.
8. Driver side underside Cover/Bumper Tub Mount is required to be cut as to fit around the Towbar but keeping two of the 3 Bumper Tub Mounting Points. (see Figure 1)
9. Create a Bumper Cut as shown in Figure 2 following the outer contours of the two lower Bumper depressions and cover with Pinch Weld.
10. Install the replacement passenger underside Cover/Bumper Tub Mount Bracket and attach underside cover to it.
11. Reassemble Vehicle in reverse order to disassembly.



Figure 1
Driver side underside Cover cut



Towbar Fitting Instructions
To Suit **NISSAN PATROL Y62 01/2013 ON**
Part Number **QTDS851L**
Rating **3500/350 kg**

PLACE THESE INSTRUCTIONS IN THE VEHICLE'S GLOVEBOX AFTER INSTALLATION IS COMPLETE



Figure 2
Bumper cut



Wiring Loom Fitting Instructions
To Suit Nissan Patrol MY13
Part Number 100912-WL

Wiring Loom Installation Instructions

Nissan Patrol MY13
Part No: 100912-WL
ECU Required: WLT030

Tail Harness Length Required: 400mm

Wiring Loom Installation Time: Approx 30 Mins



Wiring Loom Fitting Instructions
To Suit Nissan Patrol MY13
Part Number 100912-WL

1. In the luggage compartment, remove the floor carpet cover.
2. Remove the tool tray.
3. Remove the two bolts on the RHS tool tray trim.
4. Remove the tool tray plastic trim.

Repeat steps 3 & 4 for the LHS.

5. Remove the rear luggage compartment trim, by pulling in an upwards direction.
6. On the LHS tail light, remove the tail light trim.
7. Remove the two bolts.
8. Remove the LHS tail light.

Repeat steps 6 – 8 for the RHS.

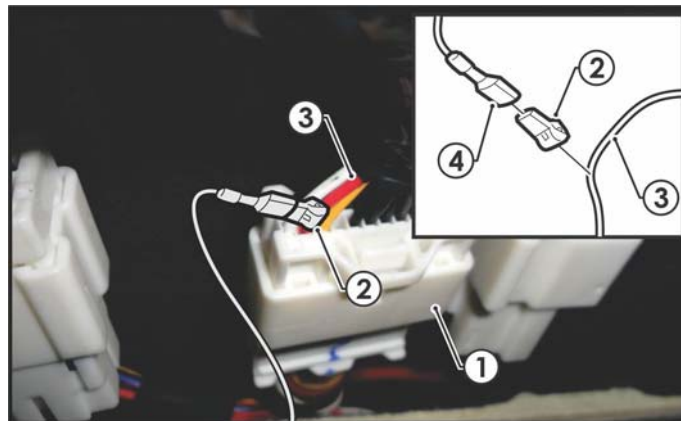
9. Remove the LHS existing vehicle tail light grommet and pull the harness through hole until the tail light connectors are exposed.
10. Disconnect the vehicle tail light connectors and connect the trailer patch (100912-WL) in between.
11. Feed the trailer patch back through the tail light cavity and firmly secure the trailer patch grommet into place.
12. **Waterproof the exposed 4-way trailer patch connector and 4-way tail light assembly connector using silicone or grease & electrical tape.**
13. Route the trailer patch across the rear towards the centre of the vehicle.
14. Underneath the vehicle on the chassis rail, connect the trailer patch ground ring terminal to the vehicle grounding point.

Note: If the vehicle grounding point is unavailable, use a tek screw to secure the ground ring terminal to the vehicle chassis in a suitable location.

15. Secure the waterproof ECU (WLT030) to the chassis rail in a suitable location, using tek screws.
16. Connect the trailer patch 24-way connector to the ECU.
17. Route the trailer patch towards the RHS tail light.
18. Remove the RHS existing vehicle tail light grommet and pull harness through hole until the tail light connectors are exposed.
19. Disconnect the vehicle tail light connector and connect the trailer patch in between.

Wiring Loom Fitting Instructions To Suit Nissan Patrol MY13 Part Number 100912-WL

20. Feed the trailer patch back through the tail light cavity and firmly secure the trailer patch grommet into place.
21. **Waterproof the exposed 4-way trailer patch connector and 4-way tail light assembly connector using silicone or grease & electrical tape.**
22. Dislodge the luggage compartment rubber seal.
23. Remove the vehicle roof trim.
24. Route the trailer patch reverse wire along the rubber seal towards the centre of the vehicle roof.
25. Inside the vehicle roof, locate the vehicle connector (1).
26. Following the table below, connect the ezy tap (2) to the vehicle 'RED' reverse wire (3), then connect the trailer patch terminal (4) to the ezy tap (2).



Function	Trailer Patch	Vehicle Connector
REVERSE	BLACK / WHITE	RED

27. Route the power harness from the positive terminal on the vehicle battery towards the rear of the vehicle.

Note: Do not connect the power harness ring terminal to the battery at this stage.

28. Route the trailer patch power harness underneath the vehicle along the chassis rail towards the rear of the vehicle.

Note: Ensure when routing to avoid any moving parts, sources of heat or sharp edges.

29. On the rear of the vehicle, connect the 1-way male connector to its mating vehicle connector.



Wiring Loom Fitting Instructions
To Suit Nissan Patrol MY13
Part Number 100912-WL

30. Mount the trailer socket to the tow bar mounting bracket using M4 fasteners (not supplied).
31. Route the tail harness (tail length 400mm) towards the trailer patch tail connector.
32. Connect the tail harness 8-way connector to the trailer patch 8-way mating connector.
33. **Waterproof the trailer patch 8-way connector and the tail harness 8-way male connector using silicone or grease.**
34. Connect the power harness positive terminal to the battery.
35. Test the trailer wiring harness function using a light board or multi meter.
36. Secure all harnesses using cable ties (not supplied).
37. Re-fit all removed parts and secure all fasteners, ensuring there are no squeaks or rattles.
38. Place the fitting instructions in the glove box after fitment.