

TRAILBOSS

Towbar Fitting Instructions
To Suit **NISSAN PATHFINDER R52**
EXCLUDES HYBRID VARIANT
Part Number **QTDS852L**
Rating **2700/200 kg**

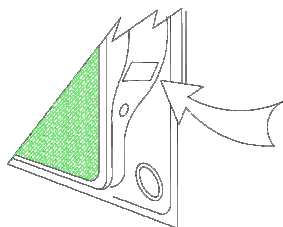
PLACE THESE INSTRUCTIONS IN THE VEHICLE'S GLOVEBOX AFTER INSTALLATION IS COMPLETED

WARNING:

1. Do not, drill, cut, weld or otherwise modify the tow bar.
2. If you are using electric welding on a motor vehicle, **always** check that the vehicle is not equipped with electronic engine or instrument management equipment. Failure to do so could **destroy** any onboard computers. If in doubt, check with the vehicle's manufacturer.
3. The high tensile fasteners supplied with this product were used to achieve the specified rating. If replacement is required ensure that fasteners of the same rating & quality are used. Contact an authorised **Trailboss** dealer if further information is required.
4. If TBM is used in inverted position tow ball may make contact with rear tailgate when lowered, which could cause damage.

General:

1. Ensure all hardware items have been included refer to assembly diagram.
2. It is recommended that the instructions are read through and completely understood before making any attempt to fit this product.
3. Be wary of any changes to vehicle designs or other accessories that may conflict with the installation of this product.
4. Before drilling ensure that the area is clear of fuel, electrical & other components.
5. All holes drilled into the body panels shall have all burrs & swarf removed then coated with a suitable rust preventative paint.
6. For vehicles that require the bumper to be cut. Ensure cut out area is in correct position on the vehicle prior to cutting the bumper.
7. The high tensile fasteners supplied with this product were used to achieve the specified rating. If replacement is required ensure that fasteners of the same rating & quality are used. Contact an authorized **Trailboss** dealer if further information is required.
8. Ensure that all hardware is fastened to torque list below check fasteners on regular basis.
9. Tow bar load rating sticker provided with this product shall be conspicuously located on inside rear end of the driver's door. **(See diagram below).**
10. Trailboss recommends that you check your tow ball to ensure that it complies with the Australian standards **AS 4177.2**.
11. **PLEASE NOTE:** It is advised to remove your lug or tbn when not actually towing so as to produce a clear view of the vehicles registration plate if obscured, and to also provide maximum available departure angle



Place load rating sticker
inside driver's door here

FOR TRAILER TOWING PURPOSES ONLY
For towing capacity details please refer to vehicle owner's manual or to the manufacturer. Overloading can void your warranties.

RECOMMENDED ASSEMBLY TORQUE LISTING

Diameter	Grade 8.8 Bolt
M6	9.5 Nm
M8	21.7 Nm
M10	43.4 Nm
M12	77.3Nm
M14	146 Nm
M16	189.8 Nm

Tow bar Maintenance and Care.

Trailboss recommends that bolt torque's, as listed below, are routinely and regularly inspected and checked for correct tension. Replace any worn or defective parts.

We recommended to remove Tow Ball Mounts (TBM's, tongues or lugs) when not being used for any considerable length of time.

So as to avoid injury, when not towing it is suggested that the tongue, Pull Pin and R-clip are removed then stored in a safe, clean and dry place, away from excessive moisture.

Hitch Pull Pins and spring "R" clips are regularly checked for proper installation. Replace any worn or defective parts.

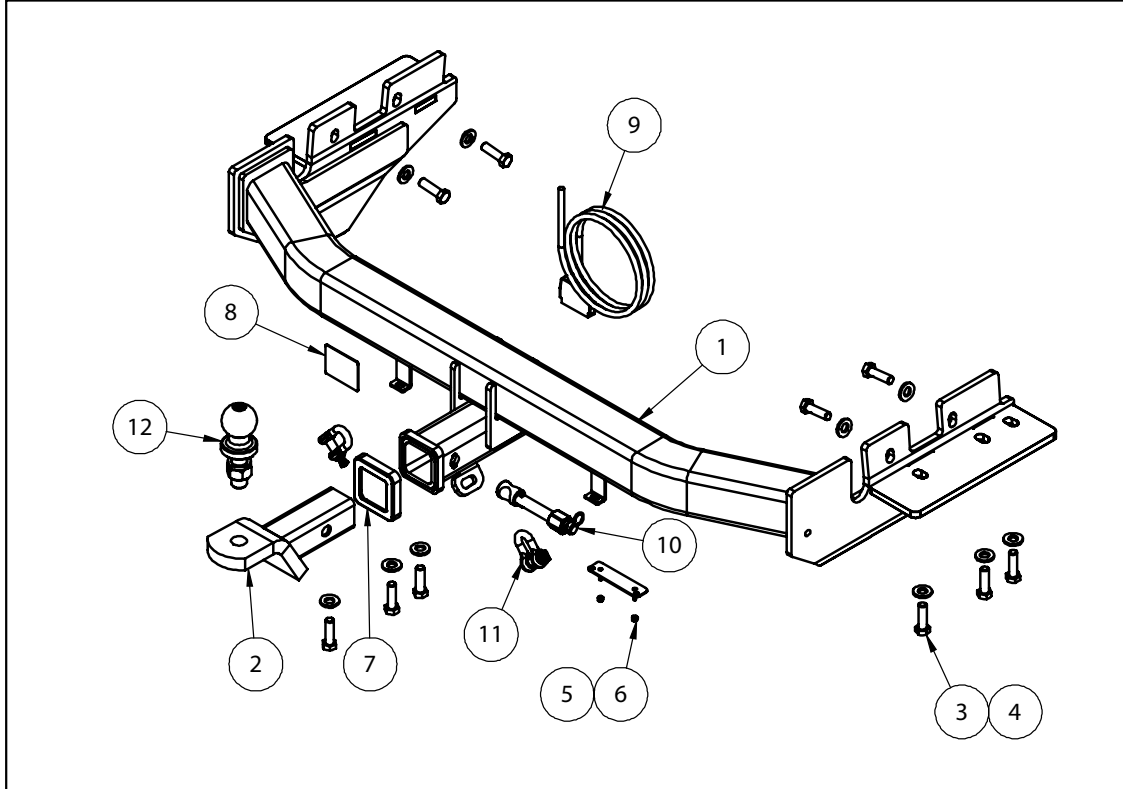
TRAILBOSS

Towbar Fitting Instructions
To Suit **NISSAN PATHFINDER R52**
EXCLUDES HYBRID VARIANT

Part Number **QTDS852L**

Rating **2700/200 kg**

PLACE THESE INSTRUCTIONS IN THE VEHICLE'S GLOVEBOX AFTER INSTALLATION IS COMPLETED



ITEM NO.	DESCRIPTION	QTY.
1	WELDED ASSEMBLY	1
2	TBM	1
3	BOLT M12-1.25x40 GR 8.8 BLK ZN	10
4	WASHER FLAT 1/2"x1 1/8"x1/8"	10
5	PLUG BRACKET	1
6	NUT NYLOC M4-0.7 Z/P	2
7	HITCH BOX COLLAR COVER	1
8	ACRYLIC COMPLIANCE PLATE	1
9	WIRING LOOM	1
10	SILENT HITCH PIN-SILVER	1
11	10mm "D" SHACKLE	2
12	50mm TOWBALL	1



Towbar Fitting Instructions
To Suit **NISSAN PATHFINDER R52**
EXCLUDES HYBRID VARIANT
Part Number **QTDS852L**
Rating **2700/200 kg**

PLACE THESE INSTRUCTIONS IN THE VEHICLE'S GLOVEBOX AFTER INSTALLATION IS COMPLETED

INSTRUCTION:

1. On the underside of the Rear Bumper Panel are 2 Plastic trim Clips. Using a flat head screwdriver (or similar) remove carefully.
2. Remove the 2 Hex Head Flange Set Screws that secure the mud flaps to the Bumper, Do this for both Driver and Passenger sides of the vehicle.
3. Remove the 2 Screws holding the top section of the Mud Flap and detach. Repeat for Passenger and Driver side.
4. Remove the Hex Head Set Screws on the inside of the Guard Liner where the Bumper meets the rear quarter panel.
5. Open the rear Tail Gate. Remove the Plastic trim to expose the tail lights and 3 securing Hex Head Set Screws. Remove the Tail lights and disconnect plugs that connect to the rear loom.
6. Remove the Plastic trim Clip located on the top of the Bumper near the tail light housing. Carefully remove the Bumper. Disconnect any plugs for factory rear parking sensors that may be fitted.
7. Remove and disregard the polystyrene trim. Using a socket with an appropriate extension remove the Hex Head Set Screws and flange Nuts that secure the Impact and Impact Beam mounts to the back panel of the vehicle.
8. Remove black Canister by unscrewing 2 Hex Head Flange Set Screws.
9. Remove and disregard factory Tow Hook by unscrewing 6 Hex head flange Set Screws.
10. Disconnect the exhaust from the Hanger to allow clearance for the Towbar.
11. Fit Towbar to vehicle using supplied M12x40 Set Screws. Starting with the Passenger side, secure left hand side of the Towbar using 2 of the supplied M12x40 Set Screws on the inside of the vehicles Chassis Rails. Repeat for Drivers side.
Re-attached charcoal Canister with factory Set Screws.
12. Fit the bottom 3 M12x40 Set Screws fully securing the Towbar. Repeat for both Passenger and Drivers side. See Torque specifications supplied in these instructions.

For Non STL Models

13. From the centre of the Bumper cut approximately 40mm either side and 80mm upward from the bottom of the lip to provide clearance for the Towbar.

For STL Model Only

14. From the centre of the Bumper cut approximately 45mm either side and 165mm upward from the bottom of the lip to provide clearance for the Towbar.
15. Repeat all steps in reverse order to reattach the Bumper



Wiring Loom Fitting Instructions
To Suit Nissan Pathfinder
Part Number 101022-WL

Wiring Loom Installation Instructions

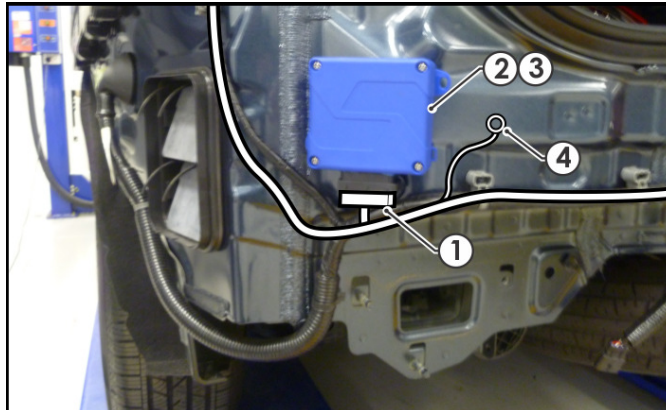
Nissan Pathfinder
Part No: 101022-WL

Tail Harness Length Required: 400mm
ECU P/No: WLT030

Wiring Loom Installation Time: Approx 20-45 Mins

Wiring Loom Fitting Instructions To Suit Nissan Pathfinder Part Number 101022-WL

1. At the rear of the vehicle, remove the rear bumper (not shown) and remove the LHS and RHS tail light assemblies (not shown).
2. At the LHS rear quarter of the vehicle, patch the Trailer Patch harness (P/No: 101022-WL) connectors to the vehicle harness tail light connector (2).
3. Connect the Trailer Patch connector (1) to the ECU (P/No: WLT030) (2). Secure the ECU (2) to the mounting area (3) using tek screws (not supplied) ensuring the ECU connector orientation is pointing downwards.
4. Secure the Trailer Patch harness ground ring terminal (4) to the vehicle sheet metal at a suitable location by using a tek screw (not supplied). Ensure the ground connection is not loose.



5. Route the Trailer Patch harness connectors towards the RHS tail light area and patch the trailer patch connectors to the tail light connector.
6. In the engine bay area, secure the power harness ring terminal to the vehicle battery positive post using the existing fastener.
7. Route the power harness 1-way connector branch underneath the vehicle following the LHS chassis rail, towards the rear of the vehicle and connect the power harness 1-way connector to the trailer patch 1-way connector.
8. Route the power harness 1-way connector branch underneath the vehicle following the LHS chassis rail, towards the rear of the vehicle and connect the power harness 1-way connector to the trailer patch 1-way connector.
9. At the rear of the vehicle, mount the Tail Harness (tail length: 400mm) socket head to the towbar mounting bracket (not shown) using M4 fasteners (not supplied). Connect the tail harness connector to the Trailer Patch connector. Using silicone or electrical grease, waterproof the back of the connectors.
10. **The following Steps from here on for obtaining the reverse signal:** In the luggage compartment, remove the floor carpet. Dislodge and disconnect the sub woofer. Remove the four tray lid fasteners, three screws and then remove the tray.



Wiring Loom Fitting Instructions
To Suit Nissan Pathfinder
Part Number 101022-WL

11. Remove the three screws from the LHS luggage compartment trim and then dislodge the trim.
12. From the outside rear of the vehicle, locate and pierce a small hole into the grommet and feed the Trailer Patch BLACK/WHITE reverse wire into the vehicle.
13. In the luggage compartment area just before the wheel arch area, locate the vehicle harness exposed wires and scotch lock onto the vehicle harness LIGHT GREEN reverse wire. Use a multi-meter to determine the correct wire. Connect the Trailer Patch reverse wire terminal to the scotch lock.
14. Test the Trailer socket using a light board or multi-meter.
15. Secure the all harnesses using cables ties (not supplied).
16. Re-fit all removed parts and secure all fasteners.
17. Place instructions in glove box after fitment.



FITTING INSTRUCTIONS

Silent Anti-Rattle Hitch Pin (PR0001)

• These fitting instructions are supplied to ensure understanding of how the HITCH PIN should be fitted and used correctly.

• Once installed, we recommend **ALL** instructions are kept and placed in the vehicle glove box.

NOTE: Routine maintenance and inspection of the towbar & HITCH PIN is required. Regularly inspect for wear and check the tightness of the Hitch Pin. Follow instructions below to retighten the nut when necessary.

***Do not tow with your vehicle if the R CLIP or the HITCH PIN is loose or missing. Replacement parts are available from your Pro Series Distributor.**

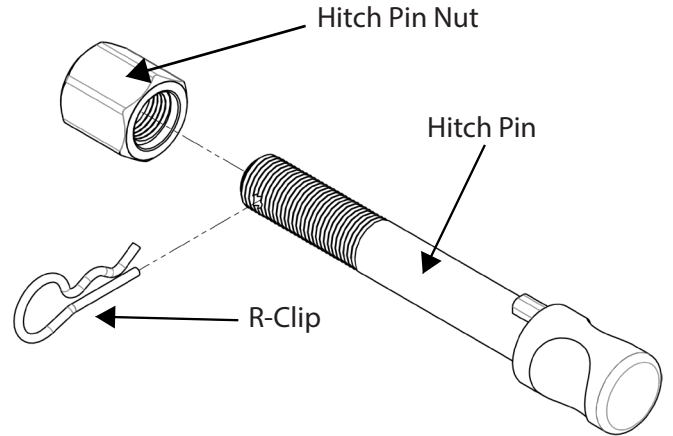


Fig 1. Silent Anti-Rattle Hitch Pin assembly

STEP 1

Insert Trailer Ball Mount (TBM) into towbar HITCHBOX, aligning hole in TBM SHANK with hole in HITCHBOX (Fig 2).

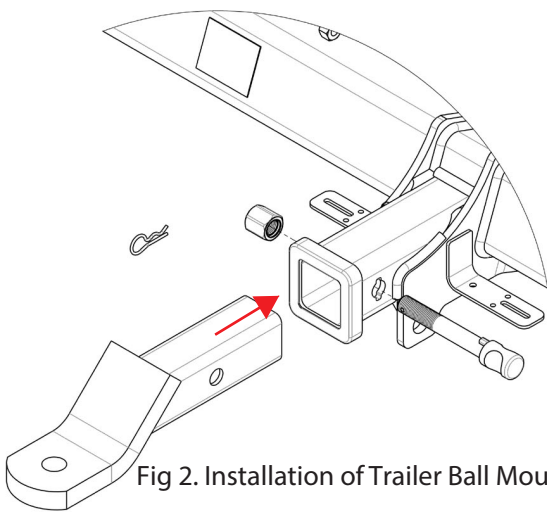


Fig 2. Installation of Trailer Ball Mount

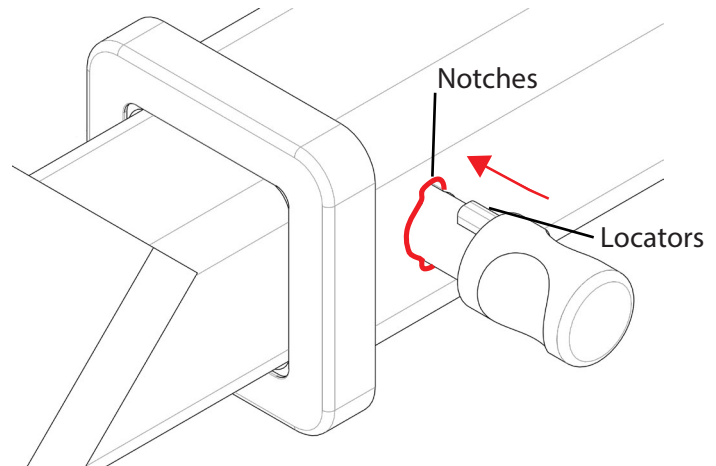


Fig 3. Silent Anti-Rattle Hitch Pin orientation

STEP 2

Insert HITCH PIN through hole in HITCHBOX and hole in TBM SHANK; ensure the LOCATORS are inserted into the NOTCHES in the HITCHBOX (Fig. 3).

STEP 3

Screw HITCH PIN NUT onto HITCH PIN ; tighten HITCH PIN NUT until finger tight, ensuring TBM is restrained from movement.

STEP 4

Tighten HITCH PIN NUT by turning nut a further 1/8th of a turn in the clockwise direction using a 24mm spanner (Fig. 4).

STEP 5

Install HITCH PIN R CLIP through the hole on the HITCH PIN (Fig. 1).

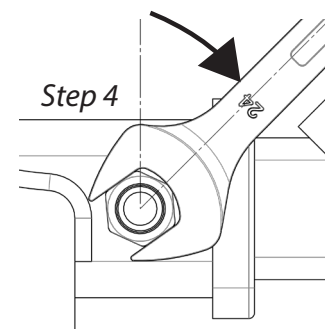


Fig 4. Tightening of Silent Anti-Rattle Hitch Pin Nut