



Towbar Fitting Instructions
To Suit **FORD KUGA 2013 ON**
Part Number **QTFD1903L**
Rating **1500/150 kg**

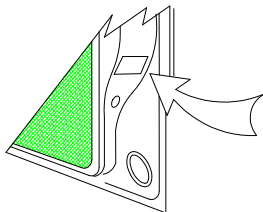
PLACE THESE INSTRUCTIONS IN THE VEHICLE'S GLOVEBOX AFTER INSTALLATION IS COMPLETED

WARNING:

1. Do not, drill, cut, weld or otherwise modify the tow bar.
2. If you are using electric welding on a motor vehicle, **always** check that the vehicle is not equipped with electronic engine or instrument management equipment. Failure to do so could **destroy** any onboard computers. If in doubt, check with the vehicle's manufacturer.
3. The high tensile fasteners supplied with this product were used to achieve the specified rating. If replacement is required ensure that fasteners of the same rating & quality are used. Contact an authorised **Trailboss** dealer if further information is required.

General:

1. Ensure all hardware items have been included refer to assembly diagram.
2. It is recommended that the instructions are read through and completely understood before making any attempt to fit this product.
3. Be wary of any changes to vehicle designs or other accessories that may conflict with the installation of this product.
4. Before drilling ensure that the area is clear of fuel, electrical & other components.
5. All holes drilled into the body panels shall have all burrs & swarf removed then coated with a suitable rust preventative paint.
6. For vehicles that require the bumper to be cut. Ensure cut out area is in correct position on the vehicle prior to cutting the bumper.
7. The high tensile fasteners supplied with this product were used to achieve the specified rating. If replacement is required ensure that fasteners of the same rating & quality are used. Contact an authorized **Trailboss** dealer if further information is required.
8. Ensure that all hardware is fastened to torque list below check fasteners on regular basis.
9. Tow bar load rating sticker provided with this product shall be conspicuously located on inside rear end of the driver's door. **(See diagram below).**
10. Trailboss recommends that you check your tow ball to ensure that it complies with the Australian standards **AS 4177.2**.
11. **PLEASE NOTE:** It is advised to remove your lug or tbn when not actually towing so as to produce a clear view of the vehicles registration plate if obscured, and to also provide maximum available departure angle
12. Pull Pin must be fit in down position.



Place load rating sticker
inside driver's door here

FOR TRAILER TOWING PURPOSES ONLY
For towing capacity details please refer to vehicle owner's manual or to the manufacturer. Overloading can void your warranties.

RECOMMENDED ASSEMBLY TORQUE LISTING

<u>Diameter</u>	<u>Grade 8.8 Bolt</u>
M6	9.5 Nm
M8	21.7 Nm
M10	43.4 Nm
M12	77.3Nm
M14	146 Nm
M16	189.8 Nm

Tow bar Maintenance and Care.

Trailboss recommends that bolt torque's, as listed below, are routinely and regularly inspected and checked for correct tension. Replace any worn or defective parts.

We recommended to remove Tow Ball Mounts (TBM's, tongues or lugs) when not being used for any considerable length of time.

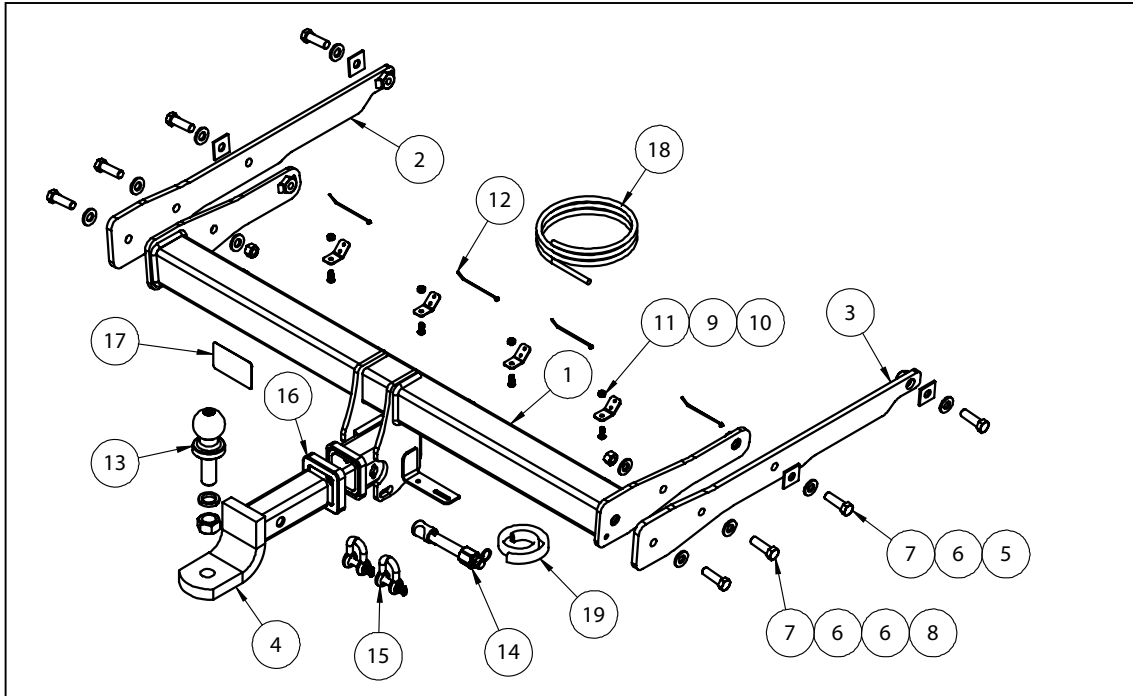
So as to avoid injury, when not towing it is suggested that the tongue, Pull Pin and R-clip are removed then stored in a safe, clean and dry place, away from excessive moisture.

Hitch Pull Pins and spring "R" clips are regularly checked for proper installation. Replace any worn or defective parts.



Towbar Fitting Instructions
To Suit **FORD KUGA 2013 ON**
Part Number **QTFD1903L**
Rating **1500/150 kg**

PLACE THESE INSTRUCTIONS IN THE VEHICLE'S GLOVEBOX AFTER INSTALLATION IS COMPLETED



QTY.	DESCRIPTION	ITEM NO.
1	FORD KUGA WELDED ASSY	1
1	SIDEARM LHS	2
1	SIDEARM RHS	3
1	TRAILER BALL MOUNT ASSY	4
4	32 x 32 x 3 (13 DIA)	5
10	WASHER FLAT 1/2"x1 1/8"x1/8"	6
8	SET SCREW M12x40x1.75P	7
2	HEX NUT M12x1.75 PC8	8
4	BOOT SENSOR BRACKET	9
4	SCREW BUTTON HD M6x16x1P	10
4	NYLOC NUT M6-1.00 Z/P	11
4	C/TIE SMALL	12
1	50mm TOWBALL	13
1	SILENT HITCH PIN – SILVER	14
2	10mm "D" SHACKLE	15
1	HITCH BOX COLLAR COVER	16
1	ACRYLIC CP	17
1	16 STRANDx0.3mm 7 CORE CABLE	18
1	BUMBER TRIM PINCH WELD 350mm	19



Towbar Fitting Instructions
To Suit **FORD KUGA 2013 ON**
Part Number **QTFD1903L**
Rating **1500/150 kg**

PLACE THESE INSTRUCTIONS IN THE VEHICLE'S GLOVEBOX AFTER INSTALLATION IS COMPLETED

INSTRUCTION:

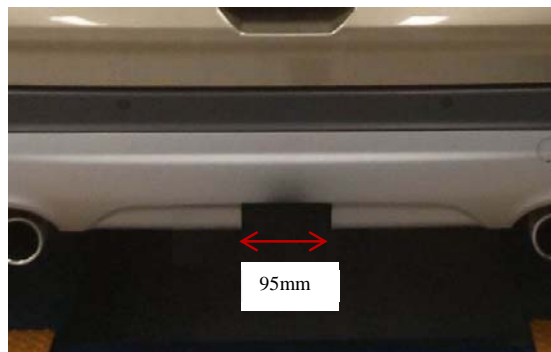
1. Remove 5x plastic Scrivets inside the wheel arch on both sides.
2. Un-clip wheel arch trim on both sides and remove the Screws at top edge of the bumper.
3. Remove 2x Screws on the light assembly inside the boot cavity by first removing the plastic plugs.
Remove the light assembly completely. Repeat for opposite side.
4. Remove 2x Screws on the Bumper inside the boot cavity on both sides below the light assembly and remove rear Bumper. Ensure all sensor plugs and fog light plugs are disconnected first.
5. Insert side arms into the chassis rail and attach loosely with 4x M12 Bolts, Washers & Washer plates provided using the factory holes in the Chassis.

If fitted with an Impact Beam remove first and discard.

Loosely attach the centre section to the side arms using 2x M12 Bolts and Washers into the captive Nuts inside the cross tube.

Insert remaining 2x M12 Bolts, Washers & Nuts into the side arms and tighten all bolts to the torque settings listed on Page: 1
6. If the vehicle is fitted with an automatic boot sensor, remove the sensor wire from the inside lower edge of the bumper by undoing 4x Screws and removing plastic cover.
7. Cut out a section of the lower Bumper 95mm wide and up to the top edge of the indentation as shown in the image and fit Bumper trim provided.

Make sure the cut is in the centre of the bumper using the etched lines on the inside of the bumper as reference.
8. Refit all parts in reverse order.
9. If the vehicle is fitted with an automatic boot sensor re-fit the sensor wire to the lower edge of the bumper using the 4x angled brackets, 6mm Bolts and Nuts through the single hole, attaching the sensor wire itself using the 4x small cable ties provided through the 2 smaller holes on each bracket.





Wiring Loom Fitting Instructions
To Suit Ford Kuga MY13
Part Number 100966-WL

Wiring Loom Installation Instructions

Ford Kuga MY13
Part No: 100966-WL

ECU Required: 04826

Tail Harness Length Required: 1800mm

Wiring Loom Installation Time: Approx 45 Mins



Wiring Loom Fitting Instructions
To Suit Ford Kuga MY13
Part Number 100966-WL

1. In the luggage compartment, remove the floor carpet cover.
2. Remove the rear luggage compartment trim by removing the three clips and the screw.
3. On the LHS of the luggage compartment, remove the screw.
4. Remove the lower luggage compartment trim.
5. On the RHS of the luggage compartment, remove the screw.
6. Carefully dislodge the lower luggage compartment trim and disconnect the light connector.
7. Remove the RHS upper luggage compartment trim.
8. Remove the two LHS tail light screws.
9. Disconnect the tail light assembly connector.
10. Remove the tail light.

Repeat for the RHS.

11. On the RHS of the rear quarter panel of the luggage compartment, drill a Ø30mm hole (1).
12. File any rough or sharp edges and spray with rust inhibitor.





Wiring Loom Fitting Instructions
To Suit Ford Kuga MY13
Part Number 100966-WL

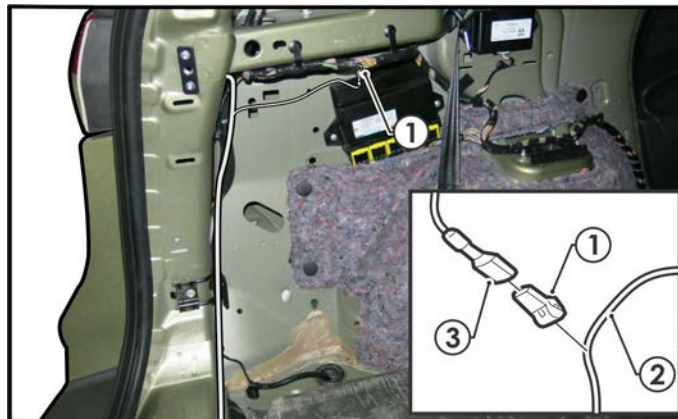
13. Push through the existing LHS tail light assembly connector through the grommet hole.

14. Feed the trailer patch grommet, through existing the grommet hole and connect the trailer patch connector to the rear of the tail light assembly.

Note: Ensure the grommet is firmly secured.

15. Connect other trailer patch connector to the previously disconnected tail light assembly connector.

16. On the LHS of the luggage compartment, following the table below, connect the ezy-tap (1) to the BROWN/BLUE wire (2) and then connect the terminal (3) to the ezy-tap (1).



Function	Trailer Patch	Vehicle Connector
REVERSE	BLACK / WHITE	BROWN / BLUE

17. Route the trailer patch towards the RHS of the vehicle.

18. Push through the existing RHS tail light assembly connector through the grommet hole.

19. Feed the trailer patch grommet, through the existing the grommet hole and connect the trailer patch connector to the rear of the tail light assembly.

Note: Ensure the grommet is firmly secured.

20. Connect other trailer patch connector to the previously disconnected tail light assembly connector.



Wiring Loom Fitting Instructions
To Suit Ford Kuga MY13
Part Number 100966-WL

21. Inside the luggage compartment access panel, apply double sided tape to the ECU and secure it to the vehicle sheet metal in a suitable location.

22. Connect the trailer patch 12-way connector to the ECU.

Note: Ensure ECU connector is facing downwards.

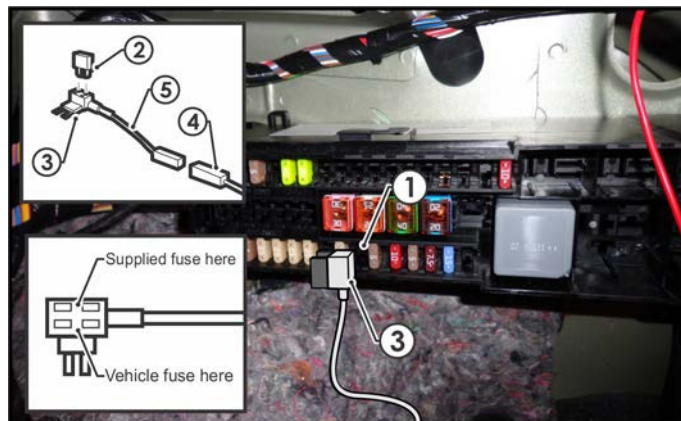
23. Connect the trailer patch ring terminal to the existing vehicle grounding point.

24. Inside the fuse panel, locate the vacant slot (1) as shown (if there is a vehicle fuse, remove and keep).

25. Insert the supplied 20-amp fuse (2) into the upper slot of the add-a-fuse (3).

26. Plug the add-a-fuse (3) into the vacant slot (1) on the fuse panel (if there is a vehicle fuse, insert it into the lower slot as shown).

27. Connect the power patch 1-way connector (4) into the add-a-fuse harness mating connector (5).



28. Mount the trailer socket to the tow bar mounting bracket using M4 fasteners (not supplied).

29. Route the tail harness across the tow bar towards the RHS of the vehicle and up through the previously drilled out hole.

30. Ensure the tail harness grommet is seated correctly and secure in place using a cable tie (not supplied).

31. Connect the tail harness (tail length 1800mm) 8-way connector to the trailer patch mating 8-way connector.



Wiring Loom Fitting Instructions
To Suit Ford Kuga MY13
Part Number 100966-WL

- 32. Test the trailer patch function using a light board or multi meter.
- 33. Secure all harnesses using cable ties (not supplied).
- 34. Re-fit all removed parts and secure all fasteners, ensuring there are no squeaks or rattles.
- 35. Place the fitting instructions in the glove box after fitment.



FITTING INSTRUCTIONS

Silent Anti-Rattle Hitch Pin (PRO001)

• These fitting instructions are supplied to ensure understanding of how the HITCH PIN should be fitted and used correctly.

• Once installed, we recommend **ALL** instructions are kept and placed in the vehicle glove box.

NOTE: Routine maintenance and inspection of the towbar & HITCH PIN is required. Regularly inspect for wear and check the tightness of the Hitch Pin. Follow instructions below to retighten the nut when necessary.

***Do not tow with your vehicle if the R CLIP or the HITCH PIN is loose or missing. Replacement parts are available from your Pro Series Distributor.**

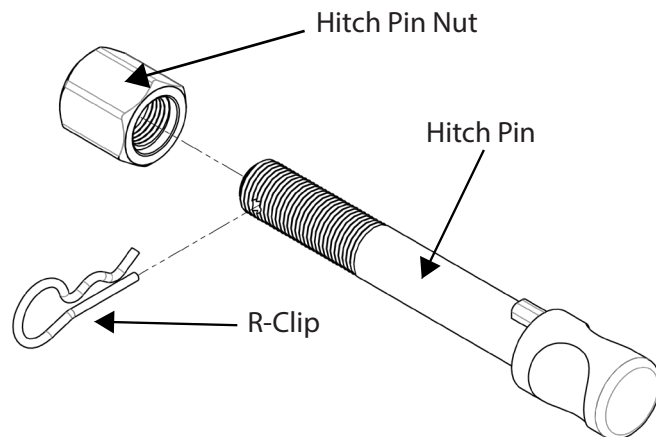


Fig 1. Silent Anti-Rattle Hitch Pin assembly

STEP 1

Insert Trailer Ball Mount (TBM) into towbar HITCHBOX, aligning hole in TBM SHANK with hole in HITCHBOX (Fig 2).

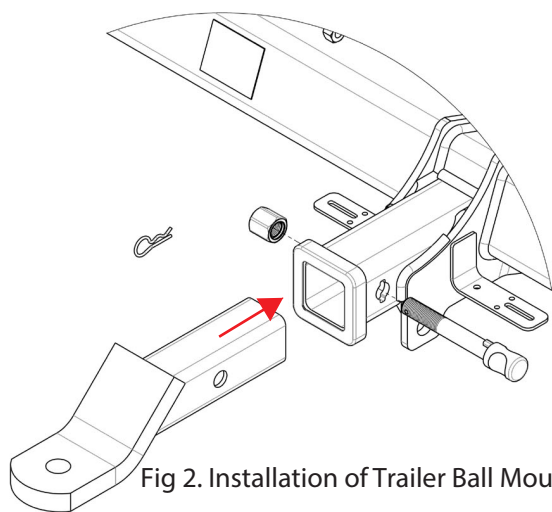


Fig 2. Installation of Trailer Ball Mount

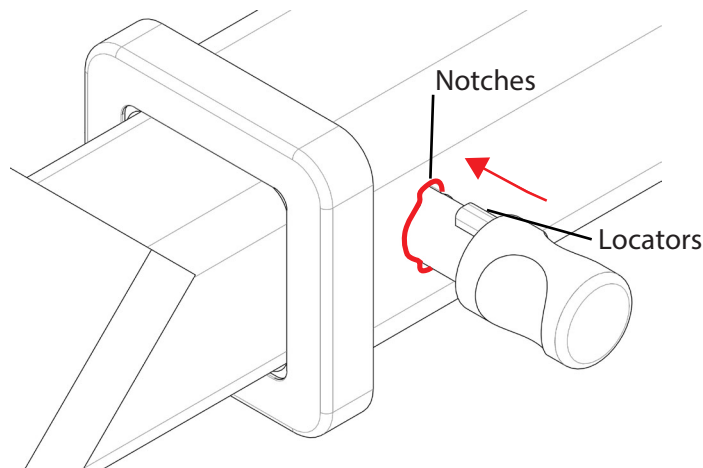


Fig 3. Silent Anti-Rattle Hitch Pin orientation

STEP 2

Insert HITCH PIN through hole in HITCHBOX and hole in TBM SHANK; ensure the LOCATORS are inserted into the NOTCHES in the HITCHBOX (Fig. 3).

STEP 3

Screw HITCH PIN NUT onto HITCH PIN ; tighten HITCH PIN NUT until finger tight, ensuring TBM is restrained from movement.

STEP 4

Tighten HITCH PIN NUT by turning nut a further 1/8th of a turn in the clockwise direction using a 24mm spanner (Fig. 4).

STEP 5

Install HITCH PIN R CLIP through the hole on the HITCH PIN (Fig. 1).

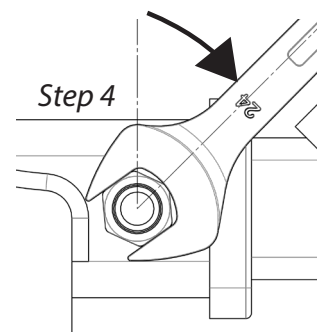


Fig 4. Tightening of Silent Anti-Rattle Hitch Pin Nut