

# TRAILBOSS

Towbar Fitting Instructions  
To Suit **FORD TRANSIT VO VAN 09/2014-ON**  
Part Number **QTFD1905L**  
Rating **3500/300 kg**

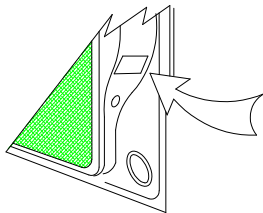
PLACE THESE INSTRUCTIONS IN THE VEHICLE'S GLOVEBOX AFTER INSTALLATION IS COMPLETED

## **WARNING:**

1. Do not, drill, cut, weld or otherwise modify the tow bar.
2. If you are using electric welding on a motor vehicle, **always** check that the vehicle is not equipped with electronic engine or instrument management equipment. Failure to do so could **destroy** any onboard computers. If in doubt, check with the vehicle's manufacturer.
3. The high tensile fasteners supplied with this product were used to achieve the specified rating. If replacement is required ensure that fasteners of the same rating & quality are used. Contact an authorised **Trailboss** dealer if further information is required.
4. If TBM is used in inverted position tow ball may make contact with rear tailgate when lowered, which could cause damage.

## **General:**

1. Ensure all hardware items have been included refer to assembly diagram.
2. It is recommended that the instructions are read through and completely understood before making any attempt to fit this product.
3. Be wary of any changes to vehicle designs or other accessories that may conflict with the installation of this product.
4. Before drilling ensure that the area is clear of fuel, electrical & other components.
5. All holes drilled into the body panels shall have all burrs & swarf removed then coated with a suitable rust preventative paint.
6. For vehicles that require the bumper to be cut. Ensure cut out area is in correct position on the vehicle prior to cutting the bumper.
7. The high tensile fasteners supplied with this product were used to achieve the specified rating. If replacement is required ensure that fasteners of the same rating & quality are used. Contact an authorized **Trailboss** dealer if further information is required.
8. Ensure that all hardware is fastened to torque list below check fasteners on regular basis.
9. Tow bar load rating sticker provided with this product shall be conspicuously located on inside rear end of the driver's door. **(See diagram below).**
10. Trailboss recommends that you check your tow ball to ensure that it complies with the Australian standards **AS 4177.2**.
11. **PLEASE NOTE:** It is advised to remove your lug or tbm when not actually towing so as to produce a clear view of the vehicles registration plate if obscured, and to also provide maximum available departure angle
12. Pull Pin must be fit in down position.



Place load rating sticker  
inside driver's door here

**FOR TRAILER TOWING PURPOSES ONLY**  
For towing capacity details please refer to vehicle owner's manual or to the manufacturer. Overloading can void your warranties.

### **RECOMMENDED ASSEMBLY TORQUE LISTING**

Diameter	Grade 8.8 Bolt
M6	9.5 Nm
M8	21.7 Nm
M10	43.4 Nm
M12	77.3Nm
M14	146 Nm
M16	189.8 Nm

## **Tow bar Maintenance and Care.**

Trailboss recommends that bolt torque's, as listed below, are routinely and regularly inspected and checked for correct tension. Replace any worn or defective parts.

We recommended to remove Tow Ball Mounts (TBM's, tongues or lugs) when not being used for any considerable length of time.

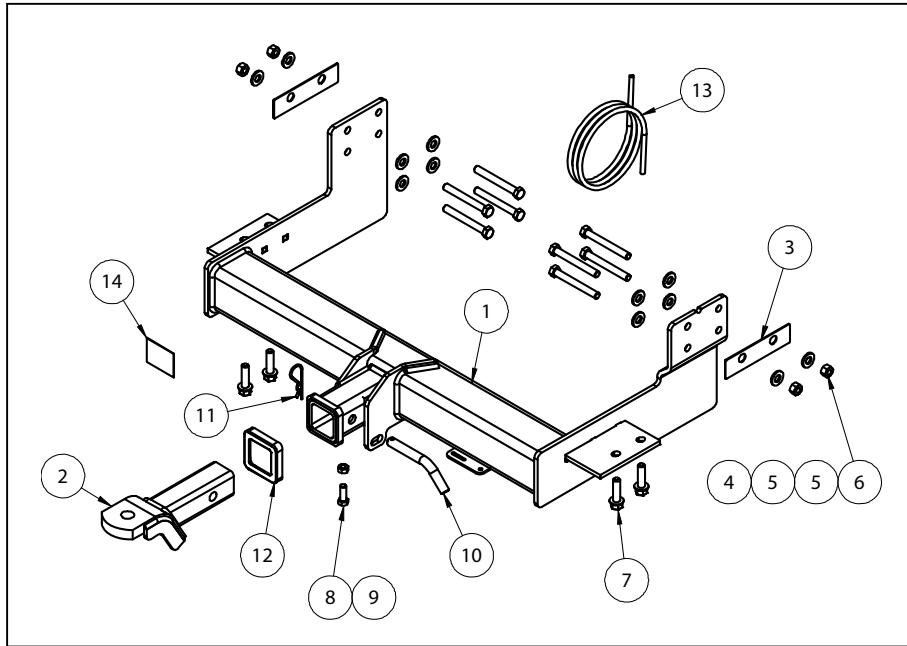
So as to avoid injury, when not towing it is suggested that the tongue, Pull Pin and R-clip are removed then stored in a safe, clean and dry place, away from excessive moisture.

Hitch Pull Pins and spring "R" clips are regularly checked for proper installation. Replace any worn or defective parts.

# TRAILBOSS

Towbar Fitting Instructions  
 To Suit **FORD TRANSIT VO VAN 09/2014-ON**  
 Part Number **QTFD1905L**  
 Rating **3500/300 kg**

PLACE THESE INSTRUCTIONS IN THE VEHICLE'S GLOVEBOX AFTER INSTALLATION IS COMPLETED



QTY.	DESCRIPTION	ITEM NO.
1	TOWBAR WELDED ASSEMBLY	1
1	TBM ASSEMBLY	2
2	SHIM PLATE	3
8	BOLT M12-1.75x100	4
12	WASHER FLAT 1/2"x1 1/8"x1/8	5
4	HEX NUT M12x1 HEX NUT	6
4	HEX WASHER TAPTITE M12x45	7
1	SET SCREW HEX HD M10x30x1.5P	8
1	HEX NUT M10x1.5	9
1	PULL PIN	10
1	R CLIP	11
1	HITCH BOX COLLAR COVER	12
1	WIRING LOOM	13
1	ACRYLIC CP	14



Towbar Fitting Instructions  
To Suit **FORD TRANSIT VO VAN 09/2014-ON**  
Part Number **QTFD1905L**  
Rating **3500/300 kg**

PLACE THESE INSTRUCTIONS IN THE VEHICLE'S GLOVEBOX AFTER INSTALLATION IS COMPLETED

**INSTRUCTION:**

1. Lower spare wheel by turning Screw located on floor of cargo area, at rear of the vehicle, anti-clockwise.
2. Remove and discard 2 x Bolts securing factory Towhook assembly to Chassis Rails. Repeat for opposite side of the vehicle.
3. Offer Towbar to rear of vehicle. Loosely secure Towbar to chassis rail using 2 x M12x100 Bolts and 1 x shim Plate, through holes in chassis rail above Towhook assembly; complete with 2 x Washers and 1x Nut per Bolt. Repeat for opposite side of the vehicle.
4. Loosely secure Towbar to chassis rail using 2 x M12x100 Bolts, complete with 1x Flat Washer per Bolt, inserted through Towhook assembly and fastened to weld Nuts on Towhook assembly. Repeat for opposite side of the vehicle.
5. Secure Towbar to underside of Towhook assembly using 2 x M12 flanged self-tapping Screws. Repeat for opposite side of the vehicle.

Tighten self-tapping Screws to torque specified on page 1 of this document.

Tighten M12x100 Bolts to torque specified on page 1 of this document.

6. Raise spare wheel to its original location by turning Screw in cargo area clockwise.



Wiring Loom Fitting Instructions  
To Suit Ford Transit Van – All Series  
Part Number 101285-WL

## Wiring Loom Installation Instructions

Ford Transit Van – All Series  
Part No: 101285-WL

Tail Length Required: 1800mm

ECU Required Part No: 04826

Wiring Loom Installation Time: Approx 30 Mins

**Important**



Due to possible vehicle variations, always confirm any noted vehicle colour wires with a multi-meter to ensure the correct function is identified before soldering or scotch locking.



Wiring Loom Fitting Instructions  
To Suit Ford Transit Van – All Series  
Part Number 101285-WL

1. Inside the cargo area at the rear, remove the LHS tail light cavity access cover. Repeat for the RHS.
2. Dislodge the rear floor trim.
3. Remove the rear RHS lower side panel by removing the required fasteners.
4. Disconnect the RHS vehicle 6-way tail light connector.
5. Patch the trailer patch harness (P/No: 101285-WL) RHS branch connectors in between the 6-way tail light connectors.
6. Secure the trailer patch ground ring terminal to a suitable location on the vehicle sheet metal using a tek screw (not supplied).
7. Following the table below, connect the ezy-tap to the corresponding vehicle 12V socket wire and then connect the trailer patch terminal to the ezy-tap.

Function	Trailer Patch	Vehicle Connector
POWER	ORANGE	PURPLE/GREY

8. Connect the trailer patch connector to the ECU (P/No: 04826). Remove the backing from the back of the ECU and mount the ECU onto the sheet metal area inside the RHS tail light cavity. **Note: Ensure the ECU connector is facing downwards. Ensure the vehicle sheet metal is cleaned using the supplied alcohol wipes before mounting ECU.**
9. From underneath the vehicle RHS tail light cavity area, locate and remove the existing vehicle grommet and drill the grommet out to Ø30mm. Apply rust inhibitor after drilling (not supplied). **Note: Ensure not to damage any vehicle components while drilling.**
10. In the rear cargo area, route the trailer patch harness RHS harness 1-way connector through the lower vehicle sheet metal opening located underneath the floor trim (this opening is only visible behind the floor trim).
11. Route the trailer patch 1-way branch underneath the rear trim towards the LHS tail light cavity area.
12. Disconnect the LHS vehicle 6-way tail light connector.
13. Locate and patch the trailer patch harness (P/No: 101285-WL) LHS branch connectors in between the 6-way tail light connectors.
14. Route the trailer patch harness 1-way connector into the cavity opening and connect it to the LHS trailer patch 1-way mating connector.
15. At the rear exterior of the vehicle, mount the tail harness socket to the towbar mounting bracket using M4 fasteners (not supplied).



Wiring Loom Fitting Instructions  
To Suit Ford Transit Van – All Series  
Part Number 101285-WL

16. Route the tail harness (tail length: 1800mm) across the RHS and up into the drilled out hole. Adjust the trailer patch harness grommet so that it is seated correctly and cable tie (not supplied) in place.
17. Connect the tail harness 8-way connector to the trailer harness mating 8-way connector.
18. Test the body harness using a light board or multi-meter.
19. Secure all harnesses using cables ties (not supplied).
20. Re-fit all removed parts and secure all fasteners.
21. Place instructions in glove box after fitment.