

# TRAILBOSS

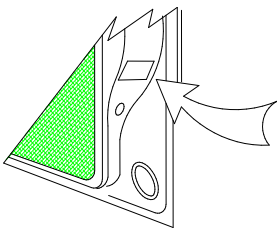
## Towbar Fitting Instructions To Suit FORD RANGER PXII/MAZDA BT50 (CAB CHASSIS) Part Number QTFD1908L Rating 3500/350 kg

### **WARNING:**

1. Do not, drill, cut, weld or otherwise modify the tow bar.
2. If you are using electric welding on a motor vehicle, **always** check that the vehicle is not equipped with electronic engine or instrument management equipment. Failure to do so could **destroy** any onboard computers. If in doubt, check with the vehicle's manufacturer.
3. The high tensile fasteners supplied with this product were used to achieve the specified rating. If replacement is required ensure that fasteners of the same rating & quality are used. Contact an authorised **Trailboss** dealer if further information is required.

### **General:**

1. Ensure all hardware items have been included refer to assembly diagram.
2. It is recommended that the instructions are read through and completely understood before making any attempt to fit this product.
3. Be wary of any changes to vehicle designs or other accessories that may conflict with the installation of this product.
4. Before drilling ensure that the area is clear of fuel, electrical & other components.
5. All holes drilled into the body panels shall have all burrs & swarf removed then coated with a suitable rust preventative paint.
6. For vehicles that require the bumper to be cut. Ensure cut out area is in correct position on the vehicle prior to cutting the bumper.
7. The high tensile fasteners supplied with this product were used to achieve the specified rating. If replacement is required ensure that fasteners of the same rating & quality are used. Contact an authorized **Trailboss** dealer if further information is required.
8. Ensure that all hardware is fastened to torque list below check fasteners on regular basis.
9. Tow bar load rating sticker provided with this product shall be conspicuously located on inside rear end of the driver's door. **(See diagram below).**
10. Trailboss recommends that you check your tow ball to ensure that it complies with the Australian standards **AS 4177.2.**
11. **PLEASE NOTE:** It is advised to remove your lug or tbn when not actually towing so as to produce a clear view of the vehicles registration plate if obscured, and to also provide maximum available departure angle
12. Pull Pin must be fit in down position.



Place load rating sticker  
inside driver's door here

**FOR TRAILER TOWING PURPOSES ONLY**  
For towing capacity details please refer to vehicle owner's manual or to the manufacturer. Overloading can void your warranties.

### **RECOMMENDED ASSEMBLY TORQUE LISTING**

<u>Diameter</u>	<u>Grade 8.8 Bolt</u>
M6	9.5 Nm
M8	21.7 Nm
M10	43.4 Nm
M12	77.3Nm
M14	146 Nm
M16	189.8 Nm

### **Tow bar Maintenance and Care.**

Trailboss recommends that bolt torque's, as listed below, are routinely and regularly inspected and checked for correct tension. Replace any worn or defective parts.

We recommended to remove Tow Ball Mounts (TBM's, tongues or lugs) when not being used for any considerable length of time.

So as to avoid injury, when not towing it is suggested that the tongue, Pull Pin and R-clip are removed then stored in a safe, clean and dry place, away from excessive moisture.

Hitch Pull Pins and spring "R" clips are regularly checked for proper installation. Replace any worn or defective parts.



Towbar Fitting Instructions  
To Suit FORD RANGER PXII/MAZDA BT50 (CAB CHASSIS)  
Part Number QTFD1908L  
Rating 3500/350 kg

**STEP 1. All Vehicles**

- a. Disconnect the sensor and light connections.
- b. Lower the spare wheel.

**CAUTION: BE AWARE OF WHEEL DISLOGEMENT WHEN LOWERING.**

**STEP 2. Complete either Step 2.1/ 2.2/ 2.3 or 2.4 depending on Vehicle application**

**2.1 For Vehicle with steel bumper**

- a. Remove the 2 x M12 Flange Bolts from either side of the bumper step assembly and remove the steel bumper from vehicle.

**NOTE: Place the bumper step assembly on a safe place to avoid damage.**

- b. Remove two bolts from each side connecting the step mount bracket from rear bumper step assembly and discard the bolts.
- c. Align three existing holes of the passenger side mount bracket with the passenger side arm of the towbar. Use two M12 Bolts and Nuts to loosely secure the bracket.
- d. Turn the assembly around and mark the centre of the fourth hole, remove the two M12 Bolts and Nuts from the assembly.
- e. Using the centre marked, drill a 16mm hole on the step mount bracket.
- f. Repeat the step 'b' to 'e' on the driver side.
- g. Apply anti rust paint on both step mount brackets.
- h. Loosely secure the step mount bracket to rear bumper step assembly using the spacer plate in between, with the M10x40 Bolts and M10 Washers for both side. Refer page (4) exploded view.

**2.2. For Vehicles with Plastic rear bumper**

- a. Remove the bolts from either side of the plastic rear bumper, and remove the plastic bumper from the vehicle.

**NOTE: Place the bumper step assembly on a safe place to avoid damage**

- b. Release the two lock nuts on each side of the bumper and slide the step mount bracket outwards to have a gap of 1200mm. The Lock nuts are located on the underside of the bumper.

**2.3. For Vehicles with Factory Fitted Towbar**

- a. Remove the 2 x M12x 40 Step bolts from either side of the Bumper step assembly, and make sure to retain the 2 sets of M12 step bolts.
- b. Remove Towbar

**2.4 For CAB CHASSIS Vehicles**

- a. Proceed to step 3

**STEP 3. Move wire loom Located on diff housing**

- a. Remove wiring loom mounted on the diff housing.
- b. Drill a 8mm hole through the connector bracket from bottom to top surface which is welded on the diff housing.
- c. Apply anti-rust or paint to newly drilled hole to prevent corrosion.
- d. Mount the wiring loom on the newly drilled top hole of the connector bracket.



Towbar Fitting Instructions  
To Suit FORD RANGER PXII/MAZDA BT50 (CAB CHASSIS)  
Part Number QTFD1908L  
Rating 3500/350 kg

**STEP 4. Towbar Fitment**

**NOTE: Two persons required to lift towbar up to vehicle.**

- a. Insert the Left Nut plate into the passenger side of the Chassis Rail and align with the holes, repeat the same with Right Nut Plate on the driver side.
- b. Loosely secure the towbar side arm to the Vehicle chassis rail via Nut plates using two M12 bolts and washer on either side.

**STEP 5. Bumper Fitment**

**5.1 Fitment of Bumper step assembly for steel and plastic version**

- a. Loosely secure the step mount bracket of the rear bumper step assembly to the chassis rail via towbar sidearm using three sets of M12 bolts & washer.  
**NOTE: Use 1xM12 Nut & washer per side for the hole that doesn't have a captive nut.**

**5.2. Fitment of Bumper step for the factory fitted towbar version**

- a. Loosely secure the towbar sidearm to the chassis rail using three sets of M12 bolts and washer.  
**NOTE: Use 1xM12 Nut & washer per side for the hole that doesn't have a captive nut.**
- b. Loosely secure the step mount bracket of the rear bumper step assembly to the chassis rail via towbar sidearm using the retained M12 step bolts (2 Sets) along with the supplied M12 Nut & washer.  
**NOTE: Torque the M12 Step bolt to 100Nm**

**5.3 Fitment of CAB Chassis**

- a. Loosely secure towbar using 3 sets of M12 Flange Bolts & Nuts.  
**NOTE: Use 1xM12 Nut & washer per side for the hole that doesn't have a captive nut.**

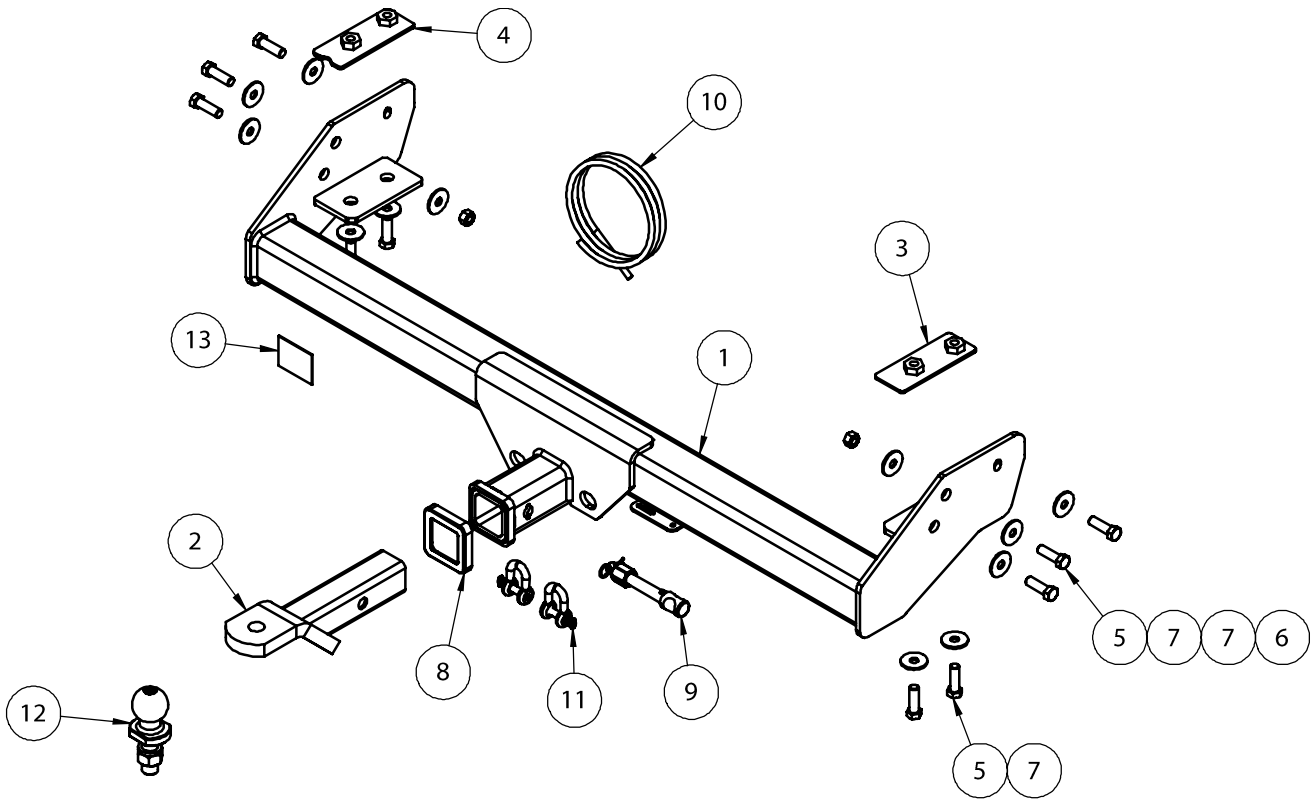
**STEP 6.** Torque all bolts to recommended specification as per table on Page 1. Tighten Vertical M12 Bolts x2 per side first then horizontal bolts.  
**NOTE: Ensure rear bumper is aligned prior to fastening horizontal M12 Fasteners**

**STEP 7. Reconnect all electrical connections to rear bumper/ step assembly.**

**STEP 8. Reattach spare wheel on to Vehicle.**

# TRAILBOSS

Towbar Fitting Instructions  
 To Suit FORD RANGER PXII/MAZDA BT50 (CAB CHASSIS)  
 Part Number QTFD1908L  
 Rating 3500/350 kg



QTY	DESCRIPTION	ITEM
1	TOWBAR	1
1	T.B.MOUNT ASSY	2
1	NUT PLATE LH T6	3
1	NUT PLATE RH T6	4
10	SET SCREW M12x40x1.75P	5
2	HEX NUT M12 x 1.75P PC8	6
12	WASHER FT M12x37x3mm	7
1	HITCH BOX COLLAR COVER	8
1	SILENT HITCH PIN - SILVER	9
1	WIRING LOOM	10
2	10mm "D" SHACKLE	11
1	50mm TOWBALL	12
1	COMPLIANCE PLATE	13



Wiring Loom Fitting Instructions  
To Suit Ford Ranger PXII, Mazda BT-50 GT  
Part Number 101426-WL

## Wiring Loom Installation Instructions

Ford Ranger PXII, Mazda BT-50 GT

Part No: 101426-WL

Tail Harness Length Required: 1800mm

ECU Required: 04835

Power Harness: 04825 (supplied)

Wiring Loom Installation Time: Approx 20 Mins

**Important**



It is not possible to over-ride the Factory RPA.  
It can however be disabled through a switch on the vehicle dash.



Wiring Loom Fitting Instructions  
To Suit Ford Ranger PXII, Mazda BT-50 GT  
Part Number 101426-WL

**Note: All steps are suitable for both vehicles.**

1. In the engine bay, route the power harness down towards the LHS of the vehicle under carriage. **Do not connect the power harness ring terminal to the battery until the end of fitment.**  
**Note: When routing any harnesses underneath the vehicle, ensure to avoid all moving parts, sources of heat and sharp objects.**
2. From underneath the vehicle, route the power harness along the LHS of the chassis rail towards the rear of the vehicle. Ensure that the power harness is secured with cable ties (not supplied).  
**Note: When routing any harnesses underneath the vehicle, ensure to avoid all moving parts, sources of heat and sharp objects.**
3. On the LHS rear under carriage, locate and disconnect the 6-way tail light connectors and connect the 6-way trailer patch (P/No: 101426-WL) in between.
4. Connect the power harness 1-way male connector to the power harness 1-way female connector.
5. Route the trailer patch along the rear of the vehicle across to the RHS tail light connectors.
6. On the RHS of the rear under carriage, disconnect the 6-way tail light connectors and connect the 6-way trailer patch connectors in between.
7. Mount the tail harness socket to the towbar mounting bracket using M4 fasteners (not supplied).
8. Route the tail harness (tail length 1800mm) along the towbar towards the trailer patch blue connector.
9. Connect the trailer patch ECU connector to the ECU.
10. Using a cleaning wipe (not supplied) clean the area on the vehicle rear interior sheet metal. Remove the ECU backing tape and secure the ECU onto the vehicle. **Ensure the ECU is mounted with the connector pointing downwards.**
11. Secure the trailer patch ground ring terminal to a suitable location on the vehicle chassis rail using a tek screw (not supplied).
12. Connect the tail harness 8-way connector to the trailer patch 8-way mating connector.
13. Waterproof the trailer patch 8-way connector and the tail harness 8-way male connector using silicone or grease (not supplied).
14. In the engine bay, secure the power harness ring terminal to the battery positive terminal.
15. Test the trailer harness function using a light board or multi-meter.
16. Secure all harnesses using cables ties (not supplied).
17. Re-fit all removed parts and secure all fasteners, ensuring there are no squeaks or rattles.
18. Place the instructions in the glove box after fitment.



# FITTING INSTRUCTIONS

## Silent Anti-Rattle Hitch Pin (PR0001)

• These fitting instructions are supplied to ensure understanding of how the HITCH PIN should be fitted and used correctly.

• Once installed, we recommend **ALL** instructions are kept and placed in the vehicle glove box.

**NOTE: Routine maintenance and inspection of the towbar & HITCH PIN is required. Regularly inspect for wear and check the tightness of the Hitch Pin. Follow instructions below to retighten the nut when necessary.**

**\*Do not tow with your vehicle if the R CLIP or the HITCH PIN is loose or missing. Replacement parts are available from your Pro Series Distributor.**

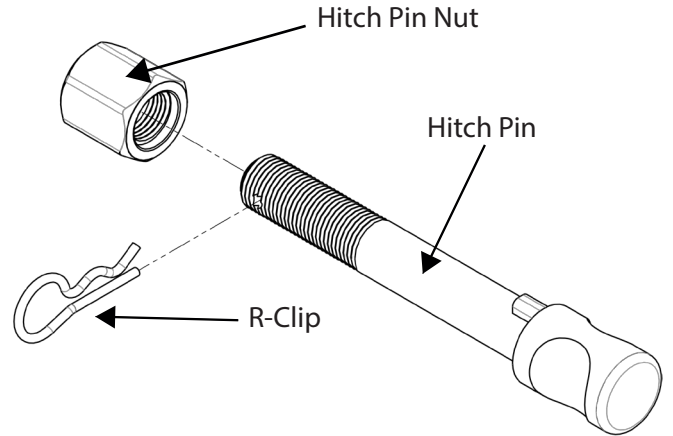


Fig 1. Silent Anti-Rattle Hitch Pin assembly

### STEP 1

Insert Trailer Ball Mount (TBM) into towbar HITCHBOX, aligning hole in TBM SHANK with hole in HITCHBOX (Fig 2).

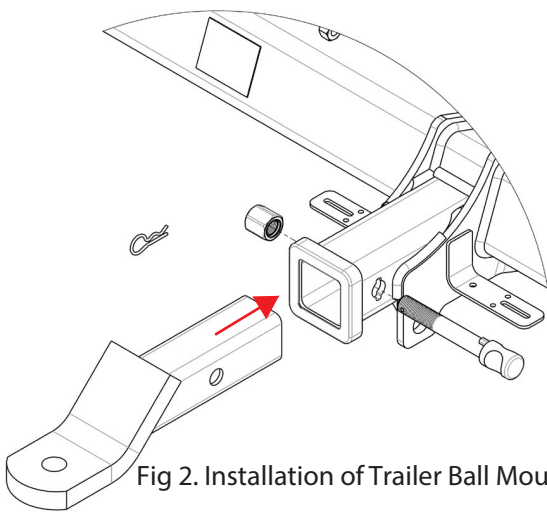


Fig 2. Installation of Trailer Ball Mount

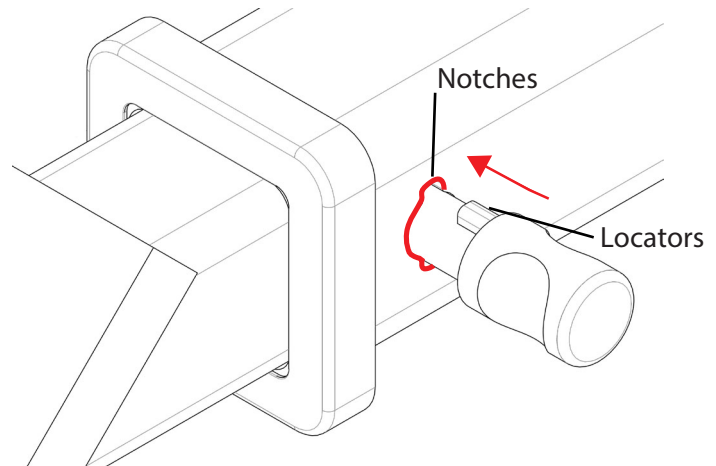


Fig 3. Silent Anti-Rattle Hitch Pin orientation

### STEP 2

Insert HITCH PIN through hole in HITCHBOX and hole in TBM SHANK; ensure the LOCATORS are inserted into the NOTCHES in the HITCHBOX (Fig. 3).

### STEP 3

Screw HITCH PIN NUT onto HITCH PIN; tighten HITCH PIN NUT until finger tight, ensuring TBM is restrained from movement.

### STEP 4

Tighten HITCH PIN NUT by turning nut a further 1/8th of a turn in the clockwise direction using a 24mm spanner (Fig. 4).

### STEP 5

Install HITCH PIN R CLIP through the hole on the HITCH PIN (Fig. 1).

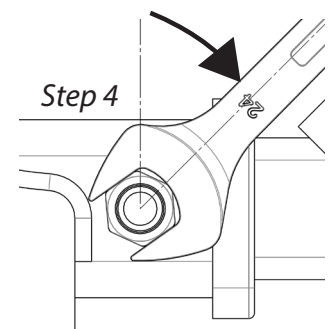


Fig 4. Tightening of Silent Anti-Rattle Hitch Pin Nut