

# TRAILBOSS

## Towbar Fitting Instructions To Suit FORD RANGER/ MAZDA BT-50 4x4 TUB Part Number **QTFD1910L** Rating 3500 / 350 kg

PLEASE ENSURE THAT INSTRUCTIONS ARE UNDERSTOOD PRIOR TO FITMENT

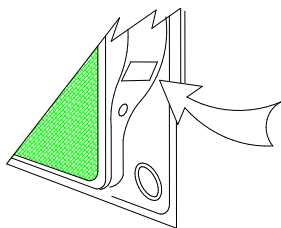
PLACE THESE INSTRUCTIONS IN THE VEHICLE'S GLOVEBOX AFTER INSTALLATION IS COMPLETED

### **WARNING:**

1. Do not, drill, cut, weld or otherwise modify the tow bar.
2. If you are using electric welding on a motor vehicle, **always** check that the vehicle is not equipped with electronic engine or instrument management equipment. Failure to do so could **destroy** any onboard computers. If in doubt, check with the vehicle's manufacturer.
3. The high tensile fasteners supplied with this product were used to achieve the specified rating. If replacement is required ensure that fasteners of the same rating & quality are used. Contact an authorised **Trailboss** dealer if further information is required.

### **General:**

1. Ensure all hardware items have been included refer to assembly diagram.
2. It is recommended that the instructions are read through and completely understood before making any attempt to fit this product.
3. Be wary of any changes to vehicle designs or other accessories that may conflict with the installation of this product.
4. Before drilling ensure that the area is clear of fuel, electrical & other components.
5. All holes drilled into the body panels shall have all burrs & swarf removed then coated with a suitable rust preventative paint.
6. For vehicles that require the bumper to be cut. Ensure cut out area is in correct position on the vehicle prior to cutting the bumper.
7. The high tensile fasteners supplied with this product were used to achieve the specified rating. If replacement is required ensure that fasteners of the same rating & quality are used. Contact an authorized **Trailboss** dealer if further information is required.
8. Ensure that all hardware is fastened to torque list below check fasteners on regular basis.
9. Tow bar load rating sticker provided with this product shall be conspicuously located on inside rear end of the driver's door. **(See diagram below)**.
10. Trailboss recommends that you check your tow ball to ensure that it complies with the Australian standards **AS 4177.2**.
11. **PLEASE NOTE:** It is advised to remove your lug or tbn when not actually towing so as to produce a clear view of the vehicles registration plate if obscured, and to also provide maximum available departure angle
12. Pull Pin must be fit in down position.



Place load rating sticker  
inside driver's door here

**FOR TRAILER TOWING PURPOSES ONLY**  
For towing capacity details please refer to vehicle owner's manual or to the manufacturer. Overloading can void your warranties.

#### RECOMMENDED ASSEMBLY TORQUE LISTING

Diameter	Grade 8.8 Bolt
M6	9.5 Nm
M8	21.7 Nm
M10	43.4 Nm
M12	77.3Nm
M14	146 Nm
M16	189.8 Nm

### **Tow bar Maintenance and Care.**

Trailboss recommends that bolt torque's, as listed below, are routinely and regularly inspected and checked for correct tension. Replace any worn or defective parts.

We recommended to remove Tow Ball Mounts (TBM's, tongues or lugs) when not being used for any considerable length of time.

So as to avoid injury, when not towing it is suggested that the tongue, Pull Pin and R-clip are removed then stored in a safe, clean and dry place, away from excessive moisture.

Hitch Pull Pins and spring "R" clips are regularly checked for proper installation. Replace any worn or defective parts.



Towbar Fitting Instructions  
To Suit FORD RANGER/ MAZDA BT-50 4x4 TUB  
Part Number **QTFD1910L**  
Rating 3500 / 350 kg

PLEASE ENSURE THAT INSTRUCTIONS ARE UNDERSTOOD PRIOR TO FITMENT

PLACE THESE INSTRUCTIONS IN THE VEHICLE'S GLOVEBOX AFTER INSTALLATION IS COMPLETED

**STEP 1 Remove spare wheel from vehicle.**

**STEP 2. Move wire loom Located on diff housing.**

- a. Remove wiring loom mounted on the diff housing.
- b. Drill an 8mm hole through the connector bracket from bottom to top surface which is welded on the diff housing.
- c. Apply anti-rust or paint to newly drilled hole to prevent corrosion.
- d. Mount the wiring loom on the newly drilled top hole of the connector bracket.

**STEP 3. Towbar Fitment**

**NOTE: Two persons required to lift towbar up to vehicle.**

- a. Insert the Nut plate into the passenger side of the Chassis Rail and align with the holes, repeat with item 3 on the driver side.
- b. Loosely secure the towbar side arm to the Vehicle chassis rail via Nut plates using two M12 bolts and washers on either side.
- c. Loosely secure the towbar sidearm to the chassis rail using three sets of M12 bolts & washer.

**NOTE: Use 1xM12 Nut & washer per side for the hole that doesn't have a captive nut.**

**STEP 4.** Torque all bolts to recommended specification as per table on Page 1. Tighten Vertical M12 Bolts x2 per side first ten horizontal bolts.

**STEP 5. Reconnect all electrical connections.**

**STEP 6. Reattach spare wheel on to Vehicle.**



Towbar Fitting Instructions  
To Suit FORD RANGER/ MAZDA BT-50 4x4 TUB  
Part Number **QTFD1910L**  
Rating 3500 / 350 kg

PLEASE ENSURE THAT INSTRUCTIONS ARE UNDERSTOOD PRIOR TO FITMENT

PLACE THESE INSTRUCTIONS IN THE VEHICLE'S GLOVEBOX AFTER INSTALLATION IS COMPLETED

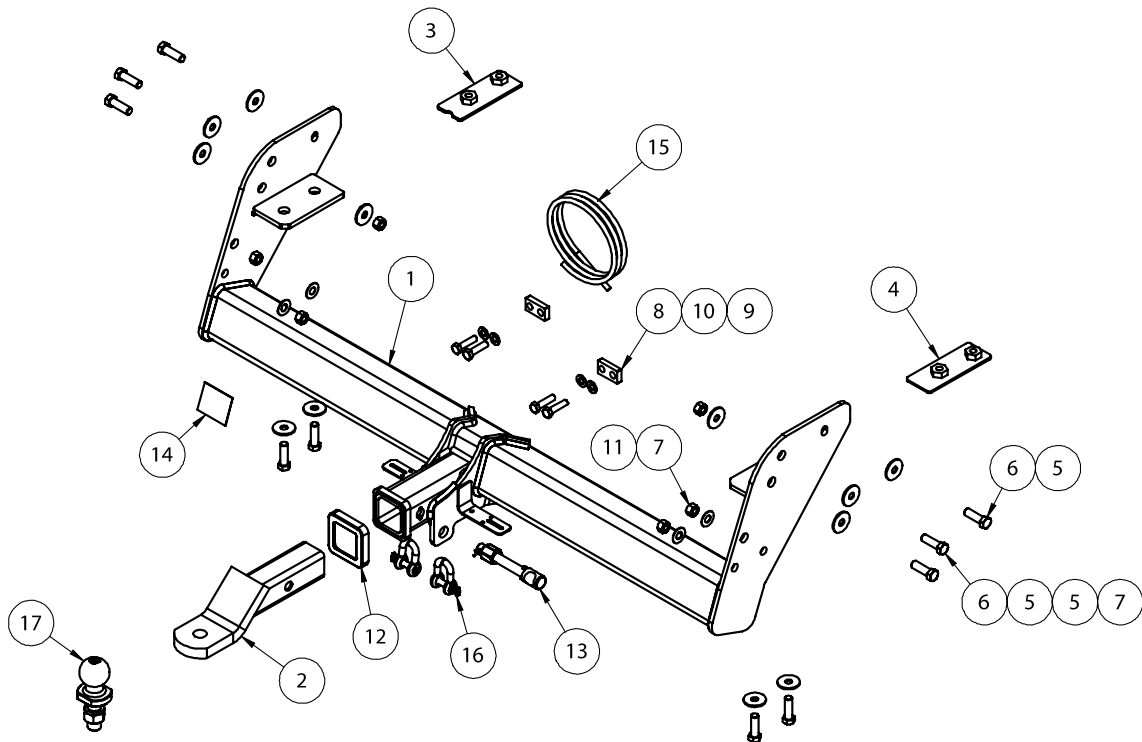
QTY	DESCRIPTION	ITEMS
1	TOWBAR ASSY	1
1	T.B.MOUNT	2
1	NUT PLATE LH T6	3
1	NUT PLATE RH T6	4
12	WASHER FT M12x37x3mm	5
10	SET SCREW M12 x 40 x 1.75P	6
6	HEX NUT M12x1.75 PC8	7
2	STEP BRACKET SPACER	8
4	BOLT M10 - 1.5 x 40mm	9
4	FLAT WASHER M10 21X1.6mm	10
4	WASHER PLAIN M12x35x2.5	11
1	HITCH BOX COLLAR COVER	12
1	SILENT HITCH PIN-SILVER	13
1	COMPLIANCE PLATE	14
1	WIRING LOOM	15
2	10mm "D" SHACKLE	16
1	50mm TOWBALL	17

# TRAILBOSS

Towbar Fitting Instructions  
To Suit FORD RANGER/ MAZDA BT-50 4x4 TUB  
Part Number **QTFD1910L**  
Rating 3500 / 350 kg

PLEASE ENSURE THAT INSTRUCTIONS ARE UNDERSTOOD PRIOR TO FITMENT

PLACE THESE INSTRUCTIONS IN THE VEHICLE'S GLOVEBOX AFTER INSTALLATION IS COMPLETED





Wiring Loom Fitting Instructions  
To Suit Ford Ranger PXII, Mazda BT-50 GT  
Part Number 101426-WL

## Wiring Loom Installation Instructions

Ford Ranger PXII, Mazda BT-50 GT

Part No: 101426-WL

Tail Harness Length Required: 1800mm

ECU Required: 04835

Power Harness: 04825 (supplied)

Wiring Loom Installation Time: Approx 20 Mins

**Important**



It is not possible to over-ride the Factory RPA.  
It can however be disabled through a switch on the vehicle dash.



Wiring Loom Fitting Instructions  
To Suit Ford Ranger PXII, Mazda BT-50 GT  
Part Number 101426-WL

**Note: All steps are suitable for both vehicles.**

1. In the engine bay, route the power harness down towards the LHS of the vehicle under carriage. **Do not connect the power harness ring terminal to the battery until the end of fitment.**  
**Note: When routing any harnesses underneath the vehicle, ensure to avoid all moving parts, sources of heat and sharp objects.**
2. From underneath the vehicle, route the power harness along the LHS of the chassis rail towards the rear of the vehicle. Ensure that the power harness is secured with cable ties (not supplied).  
**Note: When routing any harnesses underneath the vehicle, ensure to avoid all moving parts, sources of heat and sharp objects.**
3. On the LHS rear under carriage, locate and disconnect the 6-way tail light connectors and connect the 6-way trailer patch (P/No: 101426-WL) in between.
4. Connect the power harness 1-way male connector to the power harness 1-way female connector.
5. Route the trailer patch along the rear of the vehicle across to the RHS tail light connectors.
6. On the RHS of the rear under carriage, disconnect the 6-way tail light connectors and connect the 6-way trailer patch connectors in between.
7. Mount the tail harness socket to the towbar mounting bracket using M4 fasteners (not supplied).
8. Route the tail harness (tail length 1800mm) along the towbar towards the trailer patch blue connector.
9. Connect the trailer patch ECU connector to the ECU.
10. Using a cleaning wipe (not supplied) clean the area on the vehicle rear interior sheet metal. Remove the ECU backing tape and secure the ECU onto the vehicle. **Ensure the ECU is mounted with the connector pointing downwards.**
11. Secure the trailer patch ground ring terminal to a suitable location on the vehicle chassis rail using a tek screw (not supplied).
12. Connect the tail harness 8-way connector to the trailer patch 8-way mating connector.
13. Waterproof the trailer patch 8-way connector and the tail harness 8-way male connector using silicone or grease (not supplied).
14. In the engine bay, secure the power harness ring terminal to the battery positive terminal.
15. Test the trailer harness function using a light board or multi-meter.
16. Secure all harnesses using cables ties (not supplied).
17. Re-fit all removed parts and secure all fasteners, ensuring there are no squeaks or rattles.
18. Place the instructions in the glove box after fitment.



# FITTING INSTRUCTIONS

## Silent Anti-Rattle Hitch Pin (PR0001)

• These fitting instructions are supplied to ensure understanding of how the HITCH PIN should be fitted and used correctly.

• Once installed, we recommend **ALL** instructions are kept and placed in the vehicle glove box.

**NOTE: Routine maintenance and inspection of the towbar & HITCH PIN is required. Regularly inspect for wear and check the tightness of the Hitch Pin. Follow instructions below to retighten the nut when necessary.**

**\*Do not tow with your vehicle if the R CLIP or the HITCH PIN is loose or missing. Replacement parts are available from your Pro Series Distributor.**

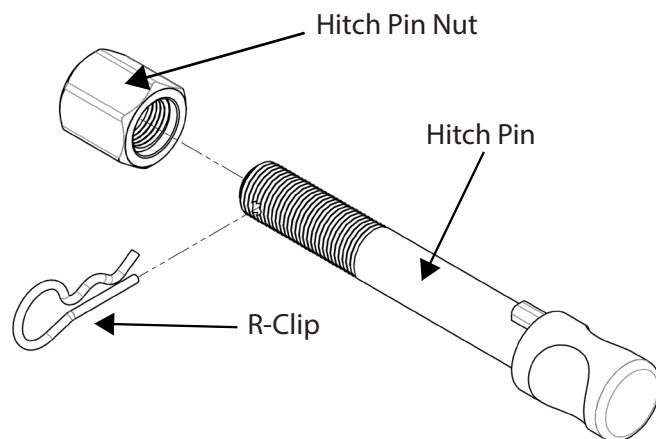


Fig 1. Silent Anti-Rattle Hitch Pin assembly

### STEP 1

Insert Trailer Ball Mount (TBM) into towbar HITCHBOX, aligning hole in TBM SHANK with hole in HITCHBOX (Fig 2).

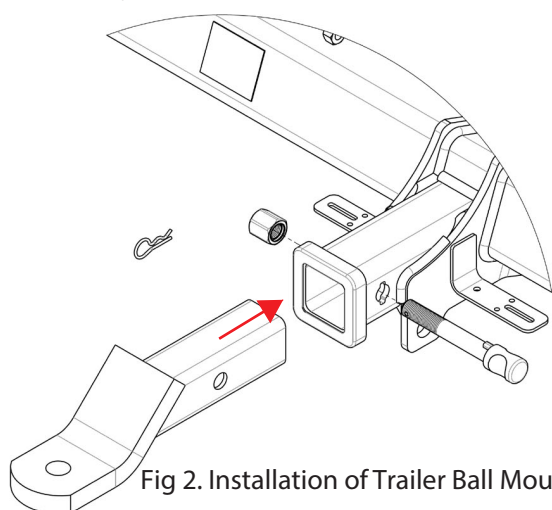


Fig 2. Installation of Trailer Ball Mount

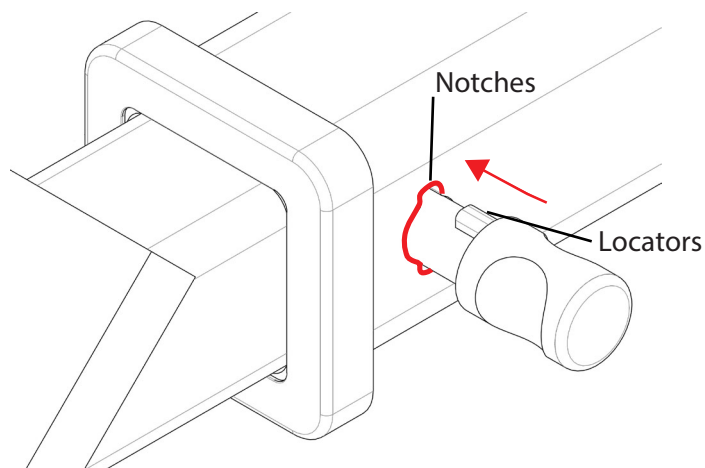


Fig 3. Silent Anti-Rattle Hitch Pin orientation

### STEP 2

Insert HITCH PIN through hole in HITCHBOX and hole in TBM SHANK; ensure the LOCATORS are inserted into the NOTCHES in the HITCHBOX (Fig. 3).

### STEP 3

Screw HITCH PIN NUT onto HITCH PIN; tighten HITCH PIN NUT until finger tight, ensuring TBM is restrained from movement.

### STEP 4

Tighten HITCH PIN NUT by turning nut a further 1/8th of a turn in the clockwise direction using a 24mm spanner (Fig. 4).

### STEP 5

Install HITCH PIN R CLIP through the hole on the HITCH PIN (Fig. 1).

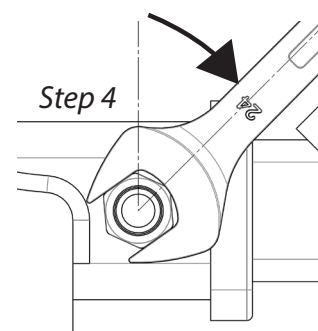


Fig 4. Tightening of Silent Anti-Rattle Hitch Pin Nut