



Towbar Fitting Instructions
To Suit **FORD EVEREST UA SERIES**
NOT SUITABLE FOR VEHICLE FITTED WITH OEM ACCESSORY
"BUMPER LOWER – REAR WITH SKID PLATE"

Part Number **QTFD1911L**

Rating **3000/300 kg**

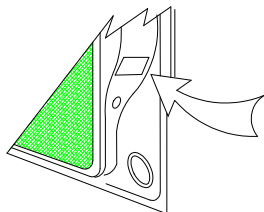
PLACE THESE INSTRUCTIONS IN THE VEHICLE'S GLOVEBOX AFTER INSTALLATION IS COMPLETED

WARNING:

1. Do not, drill, cut, weld or otherwise modify the tow bar.
2. If you are using electric welding on a motor vehicle, **always** check that the vehicle is not equipped with electronic engine or instrument management equipment. Failure to do so could **destroy** any onboard computers. If in doubt, check with the vehicle's manufacturer.
3. The high tensile fasteners supplied with this product were used to achieve the specified rating. If replacement is required ensure that fasteners of the same rating & quality are used. Contact an authorised **Trailboss** dealer if further information is required.
4. If TBM is used in inverted position tow ball may make contact with rear tailgate when lowered, which could cause damage.

General:

1. Ensure all hardware items have been included refer to assembly diagram.
2. It is recommended that the instructions are read through and completely understood before making any attempt to fit this product.
3. Be wary of any changes to vehicle designs or other accessories that may conflict with the installation of this product.
4. Before drilling ensure that the area is clear of fuel, electrical & other components.
5. All holes drilled into the body panels shall have all burrs & swarf removed then coated with a suitable rust preventative paint.
6. For vehicles that require the bumper to be cut. Ensure cut out area is in correct position on the vehicle prior to cutting the bumper.
7. The high tensile fasteners supplied with this product were used to achieve the specified rating. If replacement is required ensure that fasteners of the same rating & quality are used. Contact an authorized **Trailboss** dealer if further information is required.
8. Ensure that all hardware is fastened to torque list below check fasteners on regular basis.
9. Tow bar load rating sticker provided with this product shall be conspicuously located on inside rear end of the driver's door. **(See diagram below).**
10. Trailboss recommends that you check your tow ball to ensure that it complies with the Australian standards **AS 4177.2**.
11. **PLEASE NOTE:** It is advised to remove your lug or tbm when not actually towing so as to produce a clear view of the vehicles registration plate if obscured, and to also provide maximum available departure angle
12. Pull Pin must be fit in down position.



Place load rating sticker
inside driver's door here

FOR TRAILER TOWING PURPOSES ONLY
For towing capacity details please refer to vehicle owner's manual or to the manufacturer. Overloading can void your warranties.

RECOMMENDED ASSEMBLY TORQUE LISTING
Diameter

M6	9.5 Nm
M8	21.7 Nm
M10	43.4 Nm
M12	115.0 Nm
M14	150.0 Nm
M16	189.8 Nm

Tow bar Maintenance and Care.

Trailboss recommends that bolt torque's, as listed below, are routinely and regularly inspected and checked for correct tension. Replace any worn or defective parts.

We recommended to remove Tow Ball Mounts (TBM's, tongues or lugs) when not being used for any considerable length of time.

So as to avoid injury, when not towing it is suggested that the tongue, Pull Pin and R-clip are removed then stored in a safe, clean and dry place, away from excessive moisture.

Hitch Pull Pins and spring "R" clips are regularly checked for proper installation. Replace any worn or defective parts.

Rev: B

Page 1

Issue Date: **19-04-2016**

Cequent Customer Service

Ph: 1800 812 017 Fax: 03 9898 3299

Email: info@cequent.com.au

Post: PO Box 4050, Dandenong South VIC 3175

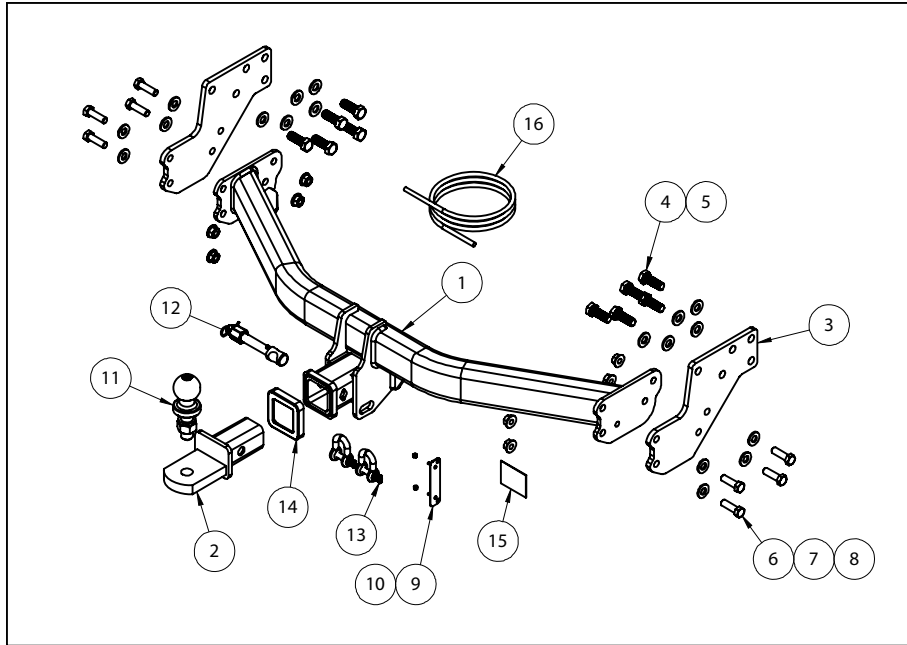


Towbar Fitting Instructions
To Suit **FORD EVEREST UA SERIES**
NOT SUITABLE FOR VEHICLE FITTED WITH OEM ACCESSORY
"BUMPER LOWER – REAR WITH SKID PLATE"

Part Number **QTFD1911L**

Rating **3000/300 kg**

PLACE THESE INSTRUCTIONS IN THE VEHICLE'S GLOVEBOX AFTER INSTALLATION IS COMPLETED



QTY.	DESCRIPTION	ITEM NO.
1	FORD EVEREST WELDED ASSEMBLY	1
1	TBM Ref 21268	2
2	SIDEARM	3
10	SET SCREW,HEX,M14	4
10	FT WASHER M14x28x3 Z/P	5
8	SET SCREW M12-1.75x40	6
8	WASHER FLAT 1/2"x1 1/8"x1/8"	7
8	WHIZZ NUT M12x1.75P	8
1	PLUG BRACKET	9
2	NUT NYLOC M4-0.7 Z/P	10
1	50mm TOWBALL	11
1	SILENT HITCH PIN-SILVER	12
2	10mm "D" SHACKLE	13
1	HITCH BOX COLLAR COVER	14
1	ACRYLIC CP	15
1	WIRING LOOM	16



Towbar Fitting Instructions
To Suit **FORD EVEREST UA SERIES**
NOT SUITABLE FOR VEHICLE FITTED WITH OEM ACCESSORY
"BUMPER LOWER – REAR WITH SKID PLATE"

Part Number **QTFD1911L**

Rating **3000/300 kg**

PLACE THESE INSTRUCTIONS IN THE VEHICLE'S GLOVEBOX AFTER INSTALLATION IS COMPLETED

INSTRUCTION:

1. Remove 1x Screw under bumper behind rear wheel arch. Repeat for opposite side of vehicle.
2. Remove 3x Screws and 3x Push rivets from rear wheel arch and remove mud guard. Repeat for opposite side of vehicle.
3. Remove 1x Screw connecting within rear wheel arch connecting bumper to rear quarter panel. Repeat for opposite side of vehicle.
4. Remove 4x flanged Screws from underside of rear bumper.
5. Remove plastic trim adjacent to tail light assembly within boot cavity. Remove 3x newly exposed Screws from tail light assembly and bumper. Repeat for opposite side of vehicle.
6. Remove and disconnect tail light assembly. Repeat for opposite side of vehicle.
7. Carefully unclip and remove the rear bumper; disconnect parking sensor loom during removal.
8. Fully lower spare wheel.
9. Remove 2x Screws securing bumper tab bracket, and remove bracket. Repeat for opposite side of vehicle.
10. Loosely secure side arm to inboard face of chassis rail using 5x M14 Set Screws, complete with 1x M14 Flat Washer per set Screw. Repeat for opposite side of vehicle.
11. Loosely secure Towbar assembly to side arms using 4x M12 Set Screws per side arm, complete with 1x M12 Flat Washer and 1x M12 flanged Nut per set Screw.
12. Tighten all fasteners to torques listed on page 1 of this document.
13. Identify centreline of bumper, and create cut in centre of bumper 95 mm wide x 70 mm tall, starting cut from bottom edge of bumper.

Note: Light contact may exist between the bumper and the towbar adjacent to hitch receiver using this cut.
14. Mark out and drill 2x ø5mm holes 69mm apart on bumper skin to support plug bracket. Feed bracket threads through drilled holes prior to reinstalling bumper.
15. Re-raise spare wheel and reinstall bumper, including bumper tab brackets and tail light assemblies, by following steps 1 to 9 in reverse order.



Wiring Loom Fitting Instructions
To Suit Ford Everest UA
Part Number 101245-WL

Wiring Loom Installation Instructions

Ford Everest UA

Part No: 101245-WL

Tail Harness Length Required: 1200mm
ECU Required: 04828

Wiring Loom Installation Time: Approx 40 Mins

Important



Due to possible vehicle variations, always confirm any noted vehicle colour wires with a multi-meter to ensure the correct function is identified before soldering or scotch locking. For vehicle wires denoted with two colours (example: RED/GREEN) the first colour will always be the main wire colour while the second colour is the thinner trace colour on the wire.

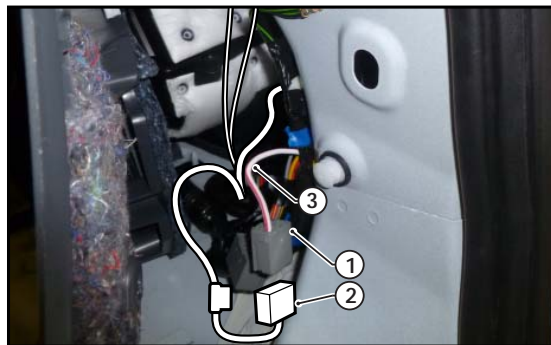


Wiring Loom Fitting Instructions
To Suit Ford Everest UA
Part Number 101245-WL

1. In the luggage compartment, remove the rear shade and floor carpet.
2. Remove the rear trim by removing the required fasteners.
3. Remove the tool tray by removing the required fasteners from the sides of the tray.
4. Remove the required fasteners to dislodge enough of the RHS luggage compartment trim to allow access to the rear quarter interior cavity.
5. Under the vehicle at the RHS rear quarter, locate and remove the existing vehicle grommet.
6. Drill out the grommet hole (1) to Ø30mm and apply rust inhibitor after drilling (not supplied). If the vehicle grommet is occupied, drill into a suitable location nearby. **Ensure there are no obstructions on the other side before drilling.**



7. Route the trailer patch (P/No: 101245-WL) branch with the grommet, through the drilled out grommet hole. **Ensure the grommet makes a good seal.**
8. Secure the trailer patch ground ring terminal to the vehicle grounding point located at the rear RHS near the boot door seal using the existing vehicle ground fastener.
9. Connect the trailer patch ECU connector to the ECU.
10. In the rear quarter interior cavity, find a suitable location on the sheet metal area and clean the area where the ECU will be mounted, then adhere the ECU into place.
11. Connect the 2-way connector (1) to the trailer patch 2-way connector (2). If occupied, cut off the 2-way connector (2) and solder onto the WHITE / RED wire (3).





Wiring Loom Fitting Instructions
To Suit Ford Everest UA
Part Number 101245-WL

12. For reverse connection, route the trailer patch BLACK/WHITE wire branch up toward the rear head lining and locate the vehicle connector. Use a multi-meter to determine the wire functions for reverse.
13. Connect the BLACK/WHITE wire ezy-tap to the corresponding vehicle wire and then connect the trailer patch terminal to the ezy-tap.
14. Connect the trailer patch RHS connectors in between the tail light connectors.
15. Route the trailer patch across to the LHS of the vehicle and connect the trailer patch LHS connectors in between the tail light connectors.
16. At the rear exterior of the vehicle, mount the tail harness socket to the towbar mounting bracket using M4 fasteners (not supplied).
17. Route the tail harness (tail length: 1200mm) across the RHS and up to the trailer patch blue connector.
18. Waterproof the trailer harness 8-way female connector and the tail harness 8-way male connector using silicone or grease.
19. Connect the trailer harness 8-way female connector to the tail harness 8-way male connector.
20. Refit the tail lights.
21. Test the trailer wiring harness function using a light board or multi-meter.
22. Secure all harnesses using cables ties (not supplied).
23. Re-fit all removed parts and secure all fasteners, ensuring there are no squeaks or rattles.
24. Place the instructions in the glove box after fitment.
25. RPA function can be disabled via the RPA menu option on the dash.



FITTING INSTRUCTIONS

Silent Anti-Rattle Hitch Pin (PRO001)

• These fitting instructions are supplied to ensure understanding of how the HITCH PIN should be fitted and used correctly.

• Once installed, we recommend **ALL** instructions are kept and placed in the vehicle glove box.

NOTE: Routine maintenance and inspection of the towbar & HITCH PIN is required. Regularly inspect for wear and check the tightness of the Hitch Pin. Follow instructions below to retighten the nut when necessary.

***Do not tow with your vehicle if the R CLIP or the HITCH PIN is loose or missing. Replacement parts are available from your Pro Series Distributor.**

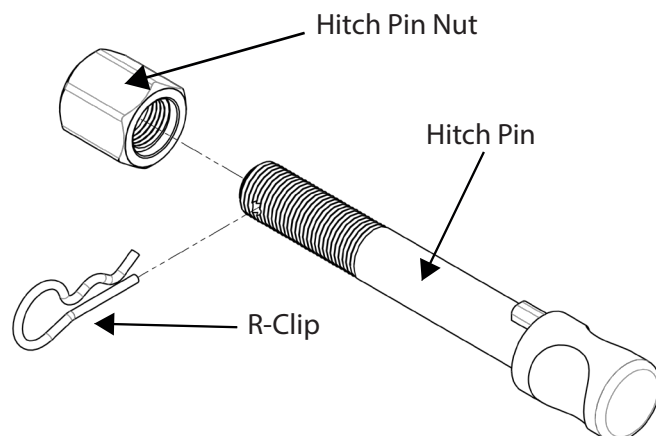


Fig 1. Silent Anti-Rattle Hitch Pin assembly

STEP 1

Insert Trailer Ball Mount (TBM) into towbar HITCHBOX, aligning hole in TBM SHANK with hole in HITCHBOX (Fig 2).

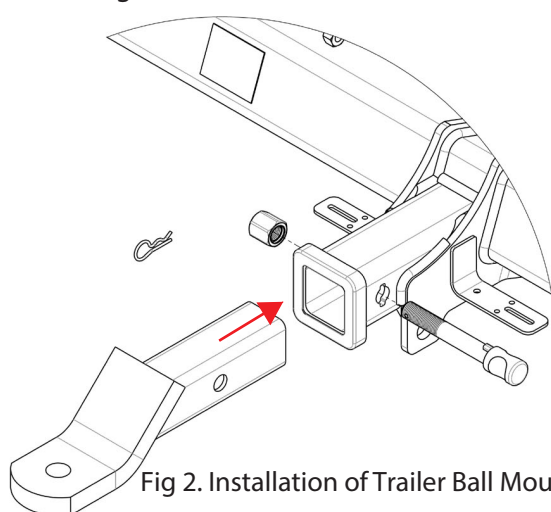


Fig 2. Installation of Trailer Ball Mount

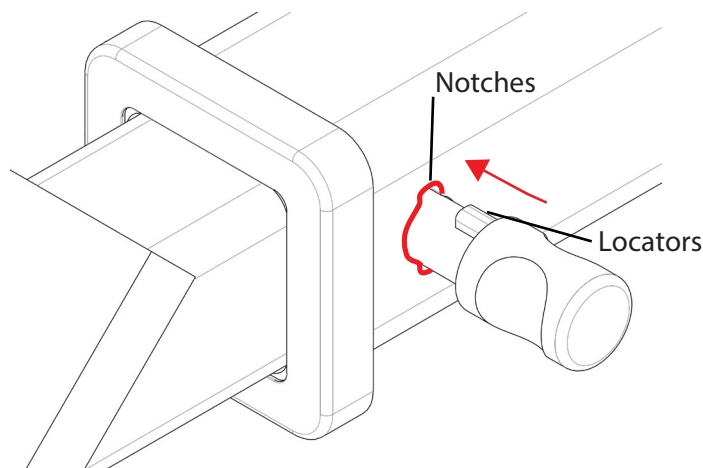


Fig 3. Silent Anti-Rattle Hitch Pin orientation

STEP 2

Insert HITCH PIN through hole in HITCHBOX and hole in TBM SHANK; ensure the LOCATORS are inserted into the NOTCHES in the HITCHBOX (Fig. 3).

STEP 3

Screw HITCH PIN NUT onto HITCH PIN ; tighten HITCH PIN NUT until finger tight, ensuring TBM is restrained from movement.

STEP 4

Tighten HITCH PIN NUT by turning nut a further 1/8th of a turn in the clockwise direction using a 24mm spanner (Fig. 4).

STEP 5

Install HITCH PIN R CLIP through the hole on the HITCH PIN (Fig. 1).

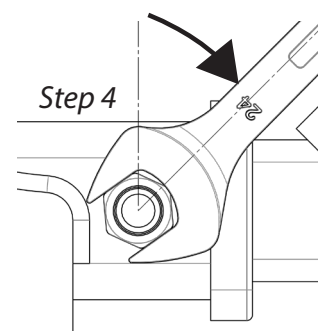


Fig 4. Tightening of Silent Anti-Rattle Hitch Pin Nut