

TRAILBOSS

Towbar Fitting Instructions
To Suit **QTFD1913L**
Part Number **FORD ESCAPE ZG CL4**
Rating **1800/180 kg**

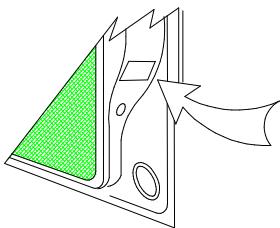
PLACE THESE INSTRUCTIONS IN THE VEHICLE'S GLOVEBOX AFTER INSTALLATION IS COMPLETED

WARNING:

1. Do not, drill, cut, weld or otherwise modify the tow bar.
2. If you are using electric welding on a motor vehicle, **always** check that the vehicle is not equipped with electronic engine or instrument management equipment. Failure to do so could **destroy** any onboard computers. If in doubt, check with the vehicle's manufacturer.
3. The high tensile fasteners supplied with this product were used to achieve the specified rating. If replacement is required ensure that fasteners of the same rating & quality are used. Contact an authorised **Trailboss** dealer if further information is required.
4. If TBM is used in inverted position tow ball may make contact with rear tailgate when lowered, which could cause damage.

General:

1. Ensure all hardware items have been included refer to assembly diagram.
2. It is recommended that the instructions are read through and completely understood before making any attempt to fit this product.
3. Be wary of any changes to vehicle designs or other accessories that may conflict with the installation of this product.
4. Before drilling ensure that the area is clear of fuel, electrical & other components.
5. All holes drilled into the body panels shall have all burrs & swarf removed then coated with a suitable rust preventative paint.
6. For vehicles that require the bumper to be cut. Ensure cut out area is in correct position on the vehicle prior to cutting the bumper.
7. The high tensile fasteners supplied with this product were used to achieve the specified rating. If replacement is required ensure that fasteners of the same rating & quality are used. Contact an authorized **Trailboss** dealer if further information is required.
8. Ensure that all hardware is fastened to torque list below check fasteners on regular basis.
9. Tow bar load rating sticker provided with this product shall be conspicuously located on inside rear end of the driver's door. **(See diagram below).**
10. Trailboss recommends that you check your tow ball to ensure that it complies with the Australian standards **AS 4177.2**.
11. **PLEASE NOTE:** It is advised to remove your LUG or TBM when not actually towing so as to produce a clear view of the vehicles registration plate if obscured, and to also provide maximum available departure angle



Place load rating sticker
inside driver's door here

FOR TRAILER TOWING PURPOSES ONLY
For towing capacity details please refer to vehicle owner's manual or to the manufacturer. Overloading can void your warranties.

RECOMMENDED ASSEMBLY TORQUE LISTING

Diameter	Grade 8.8 Bolt
M6	9.5 Nm
M8	21.7 Nm
M10	43.4 Nm
M12	77.3Nm
M14	146 Nm
M16	189.8 Nm

Tow bar Maintenance and Care.

Trailboss recommends that bolt torque's, as listed below, are routinely and regularly inspected and checked for correct tension. Replace any worn or defective parts.

We recommended to remove Tow Ball Mounts (TBM's, tongues or lugs) when not being used for any considerable length of time.

So as to avoid injury, when not towing it is suggested that the tongue, Pull Pin and R-clip are removed then stored in a safe, clean and dry place, away from excessive moisture.

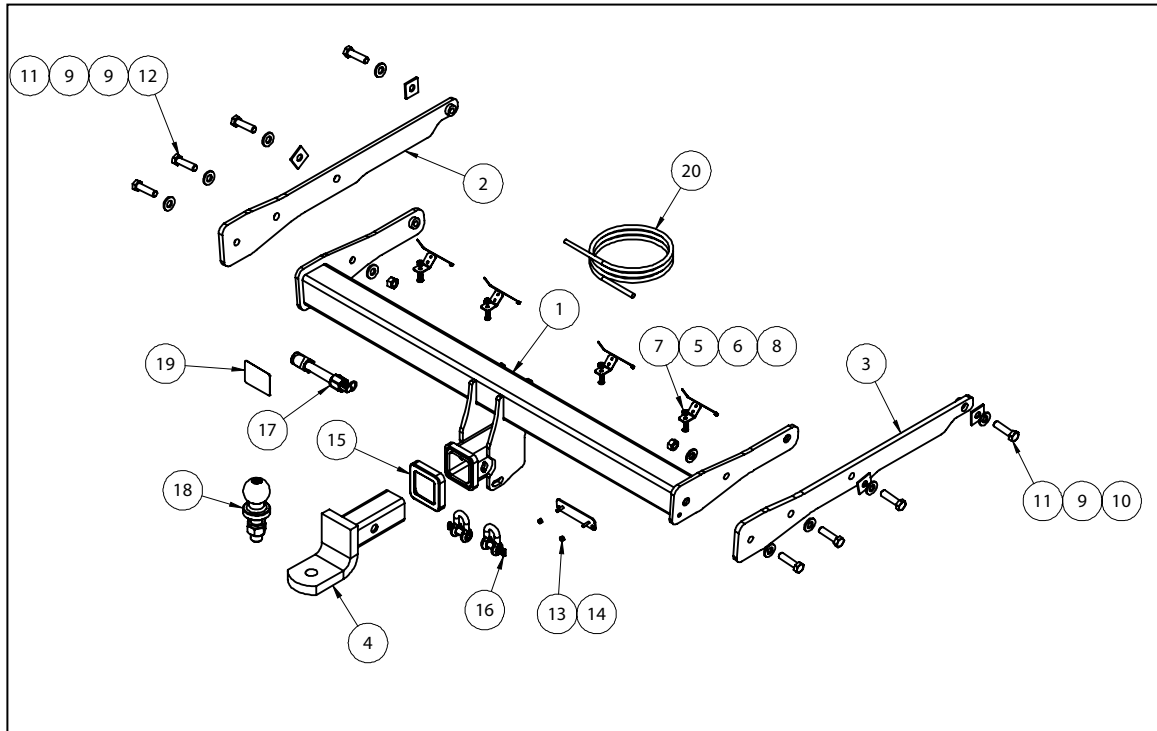
Hitch Pull Pins and spring "R" clips are regularly checked for proper installation. Replace any worn or defective parts.

Cequent Customer Service
Ph: 1800 812 017 Fax: 03 9898 3299
Email: info@cequent.com.au
Post: PO Box 4050, Dandenong South VIC 3175

TRAILBOSS

Towbar Fitting Instructions
 To Suit **QTFD1913L**
 Part Number **FORD ESCAPE ZG CL4**
 Rating **1800/180 kg**

PLACE THESE INSTRUCTIONS IN THE VEHICLE'S GLOVEBOX AFTER INSTALLATION IS COMPLETED



ITEM	DESCRIPTION	QTY
1	FORD ESCAPE WELDED ASSY	1
2	SIDE ARM ASSY,LH	1
3	SIDE ARM ASSY,RH	1
4	TRAILER BALL MOUNT	1
5	BOOT SENSOR BRACKET	4
6	SCREW BUTTON HD M6x16x1P	4
7	NYLOC NUT M6-1.00 Z/P	4
8	CABLE TIE 102x2.5MM BLK CT102B	4
9	WASHER PLAIN 1/2x1-1/8x16G	10
10	LOOSE PLATE 32 X 3 X 32 - 13 HOLE	4
11	SET SCREW M12x45x1.25P	8

ITEM	DESCRIPTION	QTY
12	NUT HEX HD M12x1.25P	2
13	PLUG BRACKET	1
14	NUT NYLOC M4-0.7 Z/P	2
15	HITCH BOX COLLAR COVER	1
16	"D" SHACKLE 10MM	2
17	SILENT HITCH PIN – SILVER	1
18	TOWBALL 50MM	1
19	ACRYLIC COMPLIANCE LABEL	1
20	WIRING LOOM	1

Cequent Customer Service
 Ph: 1800 812 017 Fax: 03 9898 3299
 Email: info@cequent.com.au
 Post: PO Box 4050, Dandenong South VIC 3175

TRAILBOSS

Towbar Fitting Instructions
To Suit **QTFD1913L**
Part Number **FORD ESCAPE ZG CL4**
Rating **1800/180 kg**

PLACE THESE INSTRUCTIONS IN THE VEHICLE'S GLOVEBOX AFTER INSTALLATION IS COMPLETED

1. Remove 5x plastic scrivenets inside wheel arch.

Repeat for the opposite side.



2. Un-clip wheel arch skirting (2 x clips and 2 x retainer clips) to expose screw at top edge of bumper.

3. Remove the screw.

Repeat for the opposite side.



4. Inside boot cavity, remove the 2 x plastic caps to expose screws securing the light assembly.

5. Remove the screws.

6. Remove light assembly (apply force rearwards) and disconnect the wiring harness.

Repeat the steps for opposite side.



Cequent Customer Service
Ph: 1800 812 017 Fax: 03 9898 3299
Email: info@cequent.com.au
Post: PO Box 4050, Dandenong South VIC 3175

TRAILBOSS

Towbar Fitting Instructions
To Suit **QTFD1913L**
Part Number **FORD ESCAPE ZG CL4**
Rating **1800/180 kg**

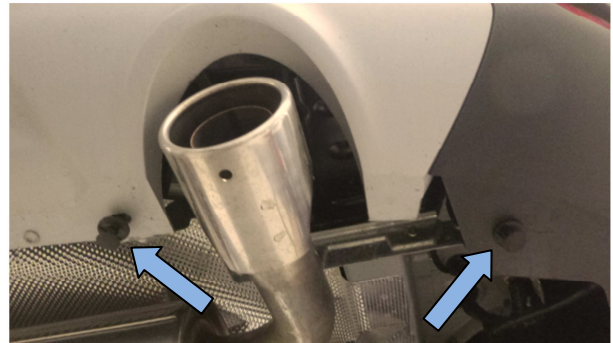
PLACE THESE INSTRUCTIONS IN THE VEHICLE'S GLOVEBOX AFTER INSTALLATION IS COMPLETED

- 7.** Inside boot cavity, remove 2 x screws securing the bumper.

Repeat for opposite side.



- 8.** Remove 4 x scrivenets located under and along the width of the bumper. (2 x RHS, 2 x LHS)



- 9.** Under RH side of bumper disconnect the 3 x wiring harnesses.

1. RH side fog light. (Repeat for LH side).
2. Main harness and remove from chassis panel.
3. Sensor harness and remove from chassis panel.



Cequent Customer Service
Ph: 1800 812 017 Fax: 03 9898 3299
Email: info@cequent.com.au
Post: PO Box 4050, Dandenong South VIC 3175

TRAILBOSS

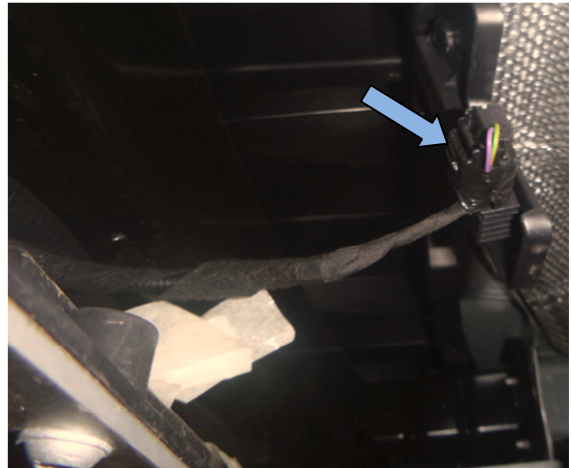
Towbar Fitting Instructions
To Suit **QTFD1913L**
Part Number **FORD ESCAPE ZG CL4**
Rating **1800/180 kg**

PLACE THESE INSTRUCTIONS IN THE VEHICLE'S GLOVEBOX AFTER INSTALLATION IS COMPLETED

- 10.** Under bumper, inside of RH exhaust tailpipe, disconnect the 3 harness connectors.



- 11.** Under bumper, towards RH side, disconnect sensor harness.



- 12.** Peel away from the ends and remove the bumper assembly.

Ensure that no other sensors are connected to the bumper.

Cequent Customer Service
Ph: 1800 812 017 Fax: 03 9898 3299
Email: info@cequent.com.au
Post: PO Box 4050, Dandenong South VIC 3175

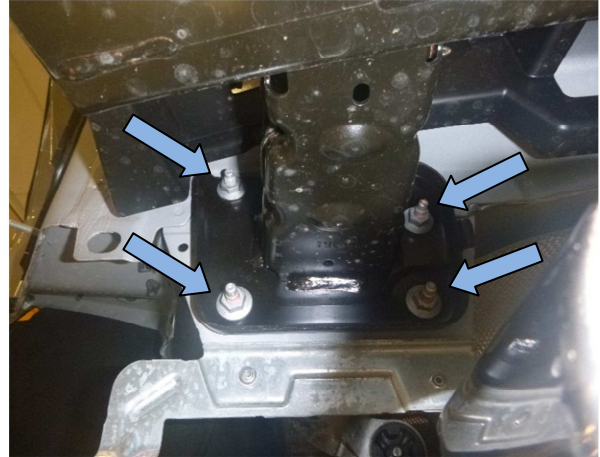
TRAILBOSS

Towbar Fitting Instructions
To Suit **QTFD1913L**
Part Number **FORD ESCAPE ZG CL4**
Rating **1800/180 kg**

PLACE THESE INSTRUCTIONS IN THE VEHICLE'S GLOVEBOX AFTER INSTALLATION IS COMPLETED

13. Remove and discard the impact beam, secured with 4 x nuts on LH.

Repeat for opposite side.



14. Insert side arms into chassis and loosely attach the most forward position using 1x M12 bolts complete with 1x washers and 1x washer plate.

Repeat for the opposite side.



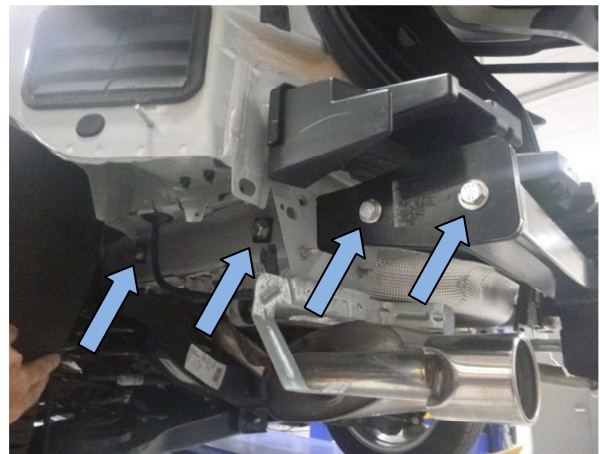
15. Loosely attach centre section of the towbar to the side arms.

Fasteners as fitted from the rear:

- 1x M12 bolt complete with 1x washer (into crosstube).
- 1x M12 bolt complete with 2x washer and 1x nut.
- 1x M12 bolt complete with 1x washer and 1x washer plate.

Repeat for opposite side.

Position the towbar and torque all fasteners to 125Nm.



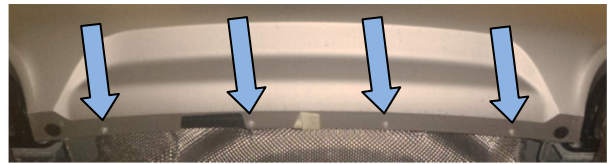
Cequent Customer Service
Ph: 1800 812 017 Fax: 03 9898 3299
Email: info@cequent.com.au
Post: PO Box 4050, Dandenong South VIC 3175

Towbar Fitting Instructions
To Suit **QTFD1913L**
Part Number **FORD ESCAPE ZG CL4**
Rating **1800/180 kg**

PLACE THESE INSTRUCTIONS IN THE VEHICLE'S GLOVEBOX AFTER INSTALLATION IS COMPLETED

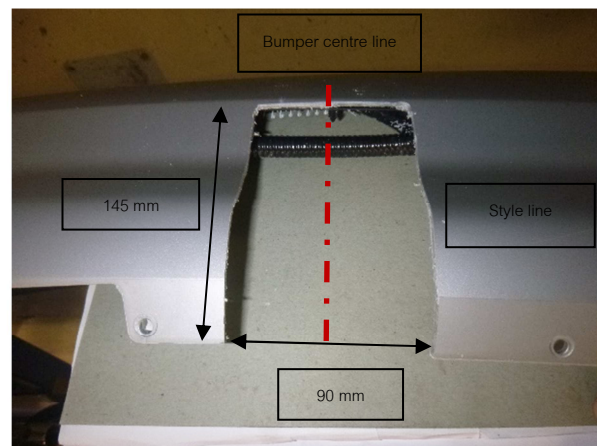
For vehicle fitted with a foot activated boot sensor.

- 16.** On the bumper, remove the 4x screws securing the automatic boot sensor wire cover and remove the automatic boot sensor.



- 17.** Locate the centre (use inside emboss for reference) and perform the bumper cut 90mm wide x 145mm long measured outside, from the bottom edge of the bumper (up to style line).

Ensure that all harnesses are clear prior to cutting the bumper.



- 18.** Refit the bumper and follow steps 1 to 12 in reverse order to reinstall the vehicle components.

Cequent Customer Service
Ph: 1800 812 017 Fax: 03 9898 3299
Email: info@cequent.com.au
Post: PO Box 4050, Dandenong South VIC 3175

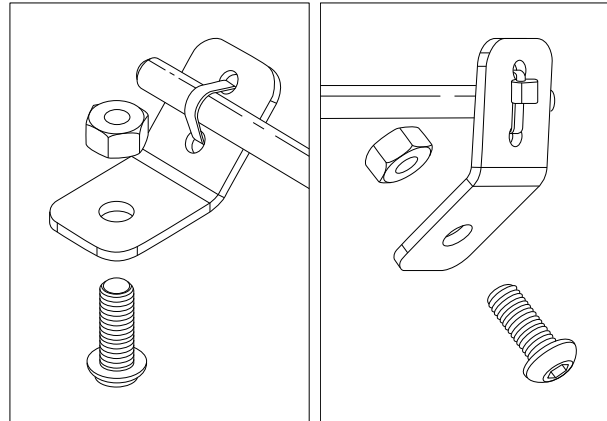
Towbar Fitting Instructions
To Suit **QTFD1913L**
Part Number **FORD ESCAPE ZG CL4**
Rating **1800/180 kg**

PLACE THESE INSTRUCTIONS IN THE VEHICLE'S GLOVEBOX AFTER INSTALLATION IS COMPLETED

- 19.** If the vehicle was fitted with a foot activated boot sensor. (Removed in step 16).

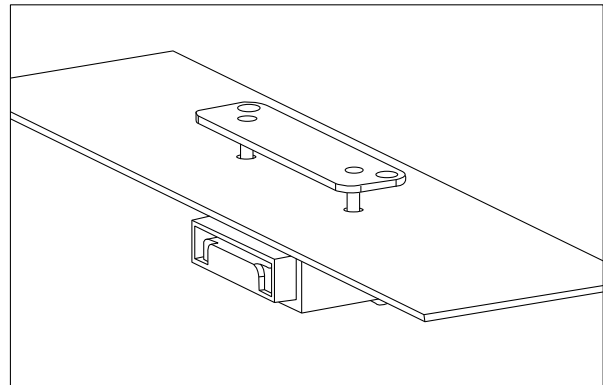
Re-fit the sensor wire to the inside lower edge of the bumper using the 4 x angled brackets complete with 1x 6mm Bolt and 1 x Nut through the single hole and attach the sensor wire itself using 1x small cable tie provided through the 2 smaller holes on each bracket as shown.

Ensure the sensor plug is reconnected to the main harness.



- 20.** Determine an appropriate position for the plug bracket. Mark out and drill 2x $\varnothing 5\text{mm}$ holes 69mm apart on bumper skin to support plug bracket.

Ensure that all wires are clear during this process.



Cequent Customer Service
Ph: 1800 812 017 Fax: 03 9898 3299
Email: info@cequent.com.au
Post: PO Box 4050, Dandenong South VIC 3175



Wiring Loom Fitting Instructions
To Suit Ford Escape ZG
Part Number 101639-WL

Wiring Loom Installation Instructions

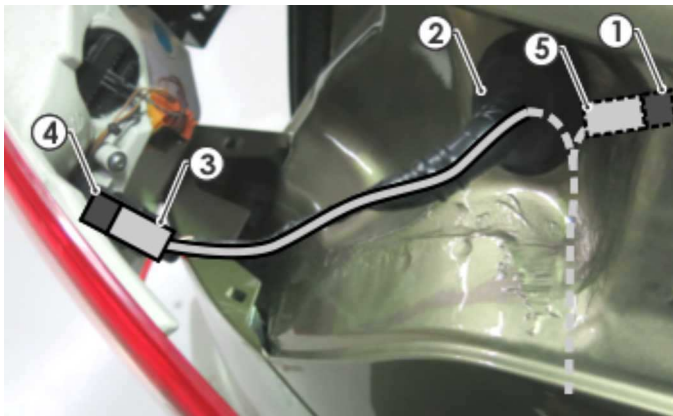
Ford Escape ZG
Part No: 101639-WL

Tail Harness Length Required: 1800mm
ECU Required: 04826

Wiring Loom Installation Time: Approx 45 Mins

Wiring Loom Fitting Instructions To Suit Ford Escape ZG Part Number 101639-WL

1. At the rear of the vehicle, remove the vehicle sun shade, luggage compartment floor carpet cover and fold the rear seats down.
2. Remove the tool trays and the spare wheel.
3. Remove the two torx screws and two scrivenets from the rear luggage scuff plate. Remove the rear luggage scuff plate.
4. Remove the jack assembly from under the spare wheel and fold the floor covering forward onto the rear seats.
5. Dislodge the LHS luggage compartment trim.
6. Carefully dislodge the RHS luggage compartment trim and disconnect both the light connector and 12v socket. Remove the RHS upper luggage compartment trim.
7. Remove the two LHS trail light screws. Disconnect the tail light assembly connector and remove the tail light. **(Repeat for RHS)**.
8. On the inside RHS rear corner of the luggage compartment, drill a Ø30mm hole next to the existing vehicle grommet. **(File any rough or sharp edges and spray with rust inhibitor)**.
9. Push the existing LHS tail light assembly connector (1) through the vehicle grommet hole.
10. Feed the trailer patch grommet (2), through the existing grommet hole and connect the trailer patch connector (3) to the rear of the LHS tail light assembly (4). **Ensure the grommet (2) is firmly secured.**
11. Connect other trailer patch connector (5) to the previously disconnected LHS tail light assembly connector (1).

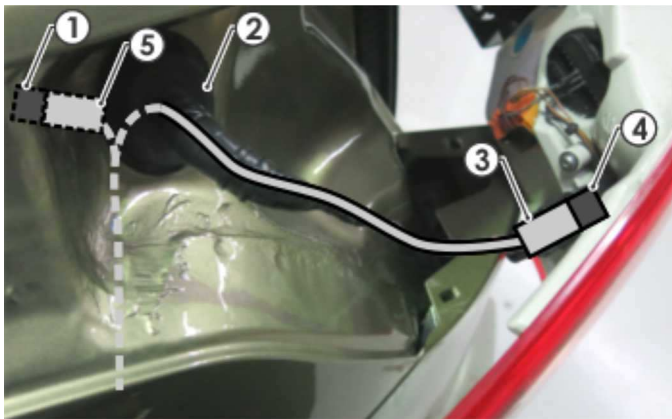


Wiring Loom Fitting Instructions To Suit Ford Escape ZG Part Number 101639-WL

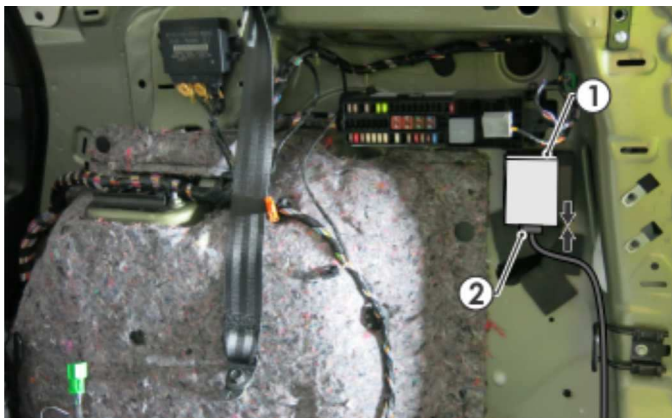
12. On the LHS of the luggage compartment, following the table below, connect the ezy-tap (1) to the BROWN/BLUE wire (2) and then connect the terminal (3) to the ezy-tap (1).

Function	Trailer Patch	Vehicle Connector
REVERSE	BLACK / WHITE	BROWN / BLUE

13. Route the Trailer Patch Harness along the boot towards the RHS of the vehicle.
14. Push the existing RHS tail light assembly connector (1) through the vehicle grommet hole.
15. Feed the trailer patch grommet (2), through the existing grommet hole and connect the trailer patch connector (3) to the rear of the RHS tail light assembly (4). **Ensure the grommet (2) is firmly secured.**
16. Connect other trailer patch connector (5) to the previously disconnected RHS tail light assembly connector (1).

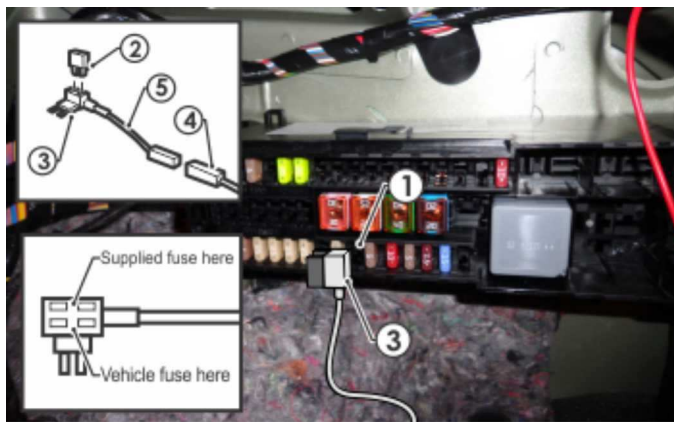


17. Inside the RHS luggage compartment, apply double sided tape to the ECU (1) and secure it to the vehicle sheet metal in the area shown. Connect the trailer patch 12-way connector to the ECU. **Ensure the ECU connector is facing downwards.**



Wiring Loom Fitting Instructions To Suit Ford Escape ZG Part Number 101639-WL

18. Secure the trailer patch ground ring terminal to the existing vehicle grounding point in the upper RHS area.
19. Inside the fuse panel, locate the vacant slot (1) as shown. **(If there is a vehicle fuse, remove and keep).** Insert the supplied 20 amp fuse (2) into the upper slot of the add-a-fuse (3).
20. Plug the add-a-fuse (3) into the vacant slot (1) on the fuse panel in the orientation as shown. **(If there was a vehicle fuse, insert it into the lower slot as shown).** Connect the power patch 1-way connector (4) into the add-a-fuse harness mating connector (5).



21. Mount the trailer socket to the towbar mounting bracket using M4 fasteners (not supplied).
22. Route the tail harness (tail length 1800mm) towards the RHS and into the previously removed grommet hole. Adjust the trailer patch harness grommet so that it is seated correctly. **Keep harness routing clear of all sharp edges, moving parts and places of extreme heat.**
23. Connect the tail harness 8-way connector to the trailer patch mating 8-way connector.
24. Refit tail lights.
25. The RPA function can be disabled within the onboard vehicle settings.
26. Test the Trailer Wiring Harness functionality using a lightboard or multimeter.
27. Secure the all harnesses using cables ties (not supplied).
28. Re-fit all removed parts and secure all fasteners, ensuring there are no squeaks or rattles.
29. Place instructions in glove box after fitment.



FITTING INSTRUCTIONS

Silent Anti-Rattle Hitch Pin (PR0001)

• These fitting instructions are supplied to ensure understanding of how the HITCH PIN should be fitted and used correctly.

• Once installed, we recommend **ALL** instructions are kept and placed in the vehicle glove box.

NOTE: Routine maintenance and inspection of the towbar & HITCH PIN is required. Regularly inspect for wear and check the tightness of the Hitch Pin. Follow instructions below to retighten the nut when necessary.

***Do not tow with your vehicle if the R CLIP or the HITCH PIN is loose or missing. Replacement parts are available from your Pro Series Distributor.**

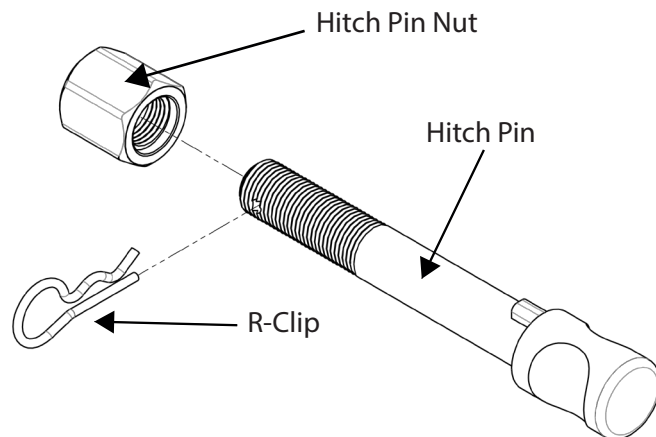


Fig 1. Silent Anti-Rattle Hitch Pin assembly

STEP 1

Insert Trailer Ball Mount (TBM) into towbar HITCHBOX, aligning hole in TBM SHANK with hole in HITCHBOX (Fig 2).

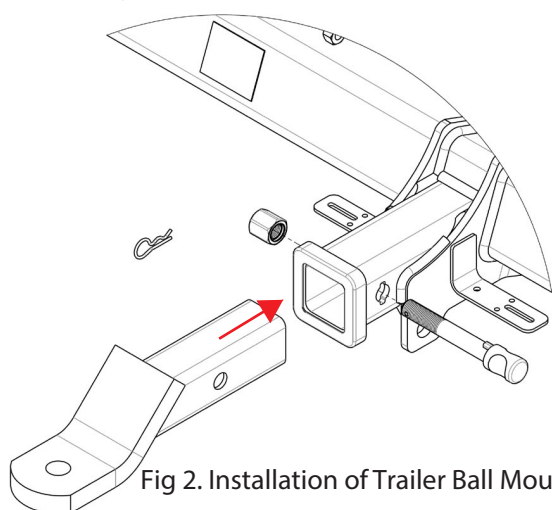


Fig 2. Installation of Trailer Ball Mount

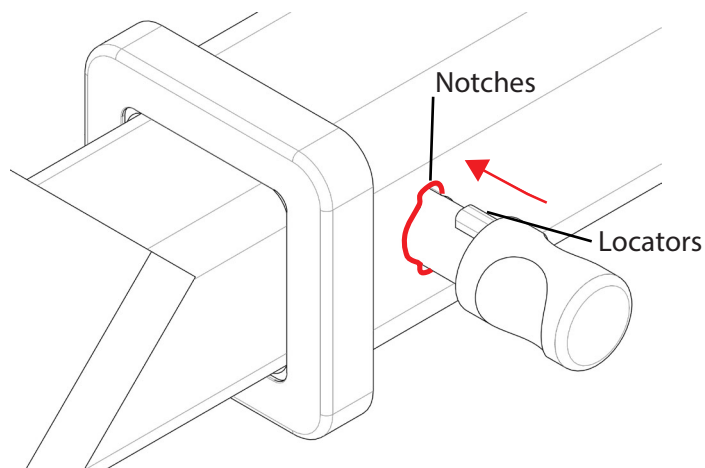


Fig 3. Silent Anti-Rattle Hitch Pin orientation

STEP 2

Insert HITCH PIN through hole in HITCHBOX and hole in TBM SHANK; ensure the LOCATORS are inserted into the NOTCHES in the HITCHBOX (Fig. 3).

STEP 3

Screw HITCH PIN NUT onto HITCH PIN; tighten HITCH PIN NUT until finger tight, ensuring TBM is restrained from movement.

STEP 4

Tighten HITCH PIN NUT by turning nut a further 1/8th of a turn in the clockwise direction using a 24mm spanner (Fig. 4).

STEP 5

Install HITCH PIN R CLIP through the hole on the HITCH PIN (Fig. 1).

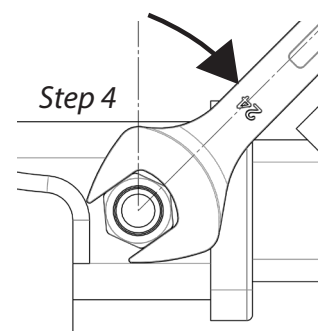


Fig 4. Tightening of Silent Anti-Rattle Hitch Pin Nut