

TRAILBOSS

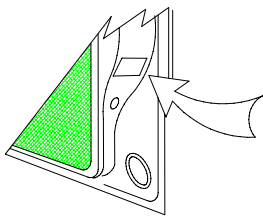
Towbar Fitting Instructions
To Suit **GREAT WALL SA220** 09-on
Part Number **QTGW002L**
Rating **1800-180** kg

WARNING:

1. Do not, drill, cut, weld or otherwise modify the tow bar.
2. If you are using electric welding on a motor vehicle, **always** check that the vehicle is not equipped with electronic engine or instrument management equipment. Failure to do so could **destroy** any onboard computers. If in doubt, check with the vehicle's manufacturer.

General:

1. Ensure all hardware items have been included refer to assembly diagram.
2. It is recommended that the instructions are read through and completely understood before making any attempt to fit this product.
3. Be wary of any changes to vehicle designs or other accessories that may conflict with the installation of this product.
4. Before drilling ensure that the area is clear of fuel, electrical & other components.
5. All holes drilled into the body panels shall have all burrs & swarf removed then coated with a suitable rust preventative paint.
6. For vehicles that require the bumper to be cut. Ensure cut out area is in correct position on the vehicle prior to cutting the bumper.
7. The high tensile fasteners supplied with this product were used to achieve the specified rating. If replacement is required ensure that fasteners of the same rating & quality are used. Contact an authorized **Trailboss** dealer if further information is required.
8. Ensure that all hardware is fastened to torque list below check fasteners on regular basis.
9. Tow bar load rating sticker provided with this product shall be conspicuously located on inside rear end of the driver's door. **(See diagram below).**
10. Trailboss recommends that you check your tow ball to ensure that it complies with the Australian standards **AS 4177.2.**
11. **PLEASE NOTE:** It is advised to remove your lug or tbn when not actually towing so as to produce a clear view of the vehicles registration plate if obscured, and to also provide maximum available departure angle



Place load rating sticker
inside driver's door here

FOR TOWING PURPOSES ONLY

For towing capacity details please refer to vehicle owner's manual or to the manufacturer. Overloading can void your warranties.

RECOMMENDED ASSEMBLY TORQUE LISTING

<u>Diameter</u>	<u>Grade 8.8 Bolt</u>
M6	9.5 Nm
M8	21.7 Nm
M10	43.4 Nm
M12	77.3Nm
M14	146 Nm
M16	189.8 Nm

Tow bar Maintenance and Care.

Trailboss recommends that bolt torque's, as listed below, are routinely and regularly inspected and checked for correct tension. Replace any worn or defective parts.

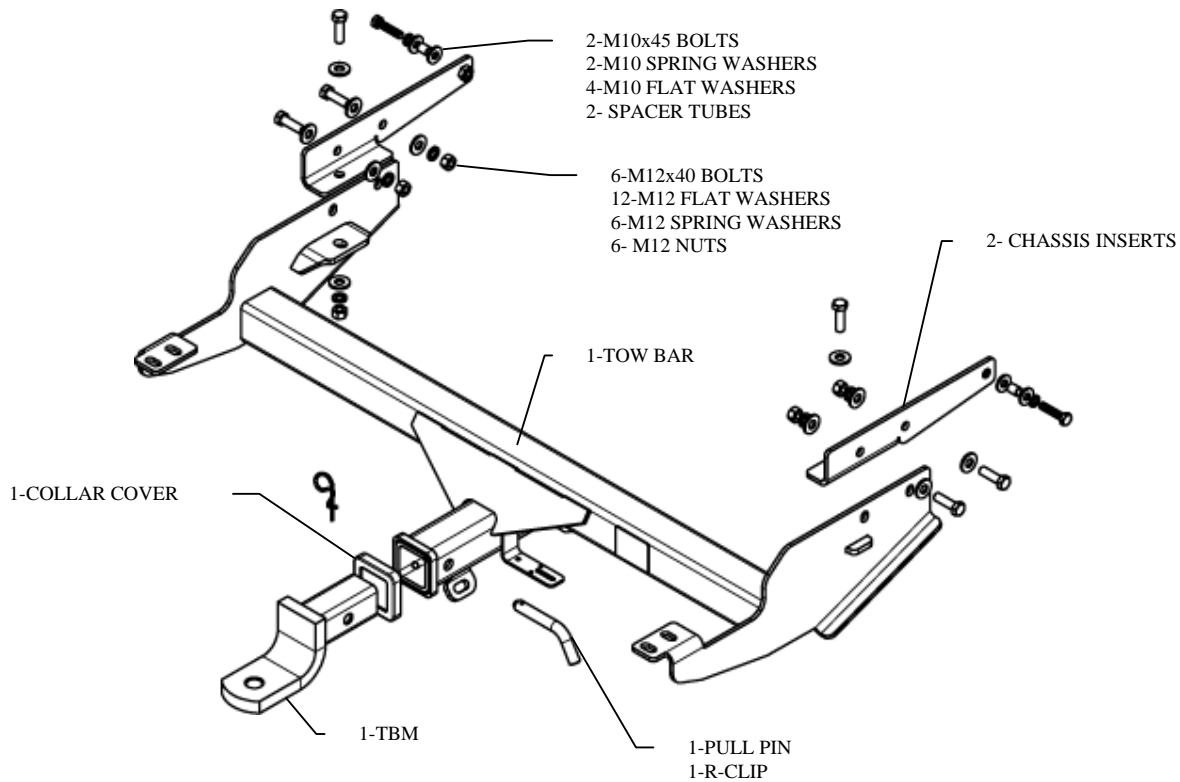
We recommended to remove Tow Ball Mounts (TBM's, tongues or lugs) when not being used for any considerable length of time.

So as to avoid injury, when not towing it is suggested that the tongue, Pull Pin and R-clip are removed then stored in a safe, clean and dry place, away from excessive moisture.

Hitch Pull Pins and spring "R" clips are regularly checked for proper installation. Replace any worn or defective parts.

TRAILBOSS

Towbar Fitting Instructions
To Suit **GREAT WALL SA220** 09-on
Part Number **QTGW002L**
Rating **1800-180** kg



1. Disconnect wiring connected to bumper bar.
2. Remove 4 screws to separate bumper bar from sidearm. Keep the screws for reinstallation.
3. Remove side arms from vehicle.
4. Insert loose plate inside chassis rails, loosely fit towbar to chassis rails using M12x40 bolts, spring washers, flat washers & nuts.
5. Fit M10x45 bolt via sandwiched spacer tube between 2 washers and spring washer on forward most hole both sides.
6. Push the bar inward and torque all fasteners.
7. Fit bumper bar to towbar brackets using existing screws.
8. Reconnect wiring.



Wiring Loom Fitting Instructions
To Suit GWM SA220
Part Number 100192-WL

Wiring Loom Installation Instructions

GWM SA220
Part No: 100192-WL

Tail Harness Length Required: 1200mm
RPA Override Switch Part No: 04848 (If Fitted)

Wiring Loom Installation Time: Approx 15 Mins



Wiring Loom Fitting Instructions
To Suit GWM SA220
Part Number 100192-WL

1. Remove the RHS tail light fasteners and then remove tail light.
2. Repeat for the LHS side.
3. From underneath the RHS rear quarter, route the trailer patch harness (P/No: 100192-WL) up the tail light cavity and connect the Trailer Patch Harness to the vehicle tail light connector.
4. Route the tail harness (tail length 1200mm) up through the RHS tail light cavity. Apply electrical grease or silicon on to the back of the Tail Harness connector and mating Trailer Patch connector to make them water proof.
5. Secure all harnesses to the vehicle using cable ties. Test the Trailer Harness function using trailer light board or multi-meter.
6. Refit all removed parts and secure all fasteners.
7. Please place the fitting instructions in the glove box after installation.