

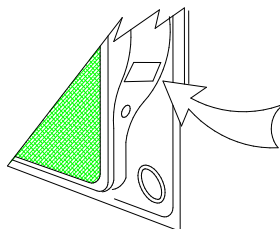
# TRAILBOSS

Towbar Fitting Instructions  
To Suit Holden Rodeo 03-on WITH STEP  
Part Number QTHD313L  
Max Tow Weight: 2500 kg  
Max Ball Weight: 250 kg

1. Ensure all hardware items have been included.
2. It is recommended that this product be fitted on a hoist, for ease of assembly
3. Remove existing towing hook if fitted.
4. Remove rear step, (6 bolts located on sides of chassis), make sure to unhook cable from wiring harness, and (ensure to re attach cable once installation is completed).
5. For 2006 & 2007 update variants remove wires from bolts see diagram below.
6. Lift tow bar into position, secure left end of towbar into chassis mounting holes with M10 bolts, spring washers and flat washers, do not tighten fully, secure opposite end of towbar using bolt and wire assembly.
7. Insert the loose plates into the chassis and secure with M12 bolts, washers and spring washer.
8. Tighten all bolts to torque listing below.
9. Tow bar load rating sticker provided with this product shall be conspicuously located on inside rear end of the driver's door. **(See diagram below).**

## **RECOMMENDED ASSEMBLY TORQUE LISTING**

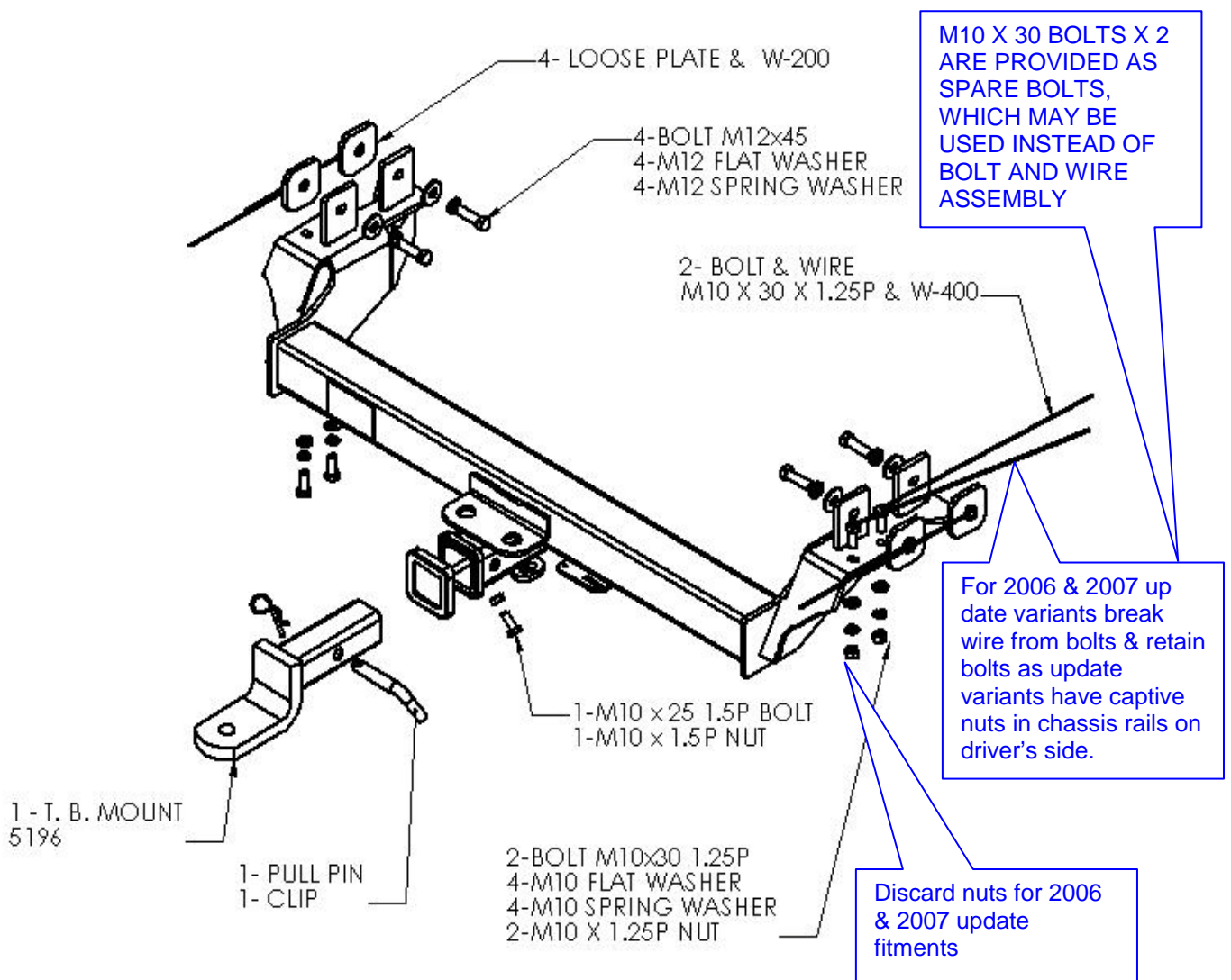
<b><u>Diameter</u></b>	<b><u>Grade 8.8 Bolt</u></b>
	<b>Nm</b>
M6	9.5
M8	21.7
M10	43.4
M12	77.3
M14	121.0
M16	189.8



**Place load rating sticker  
inside driver's door here**

# TRAILBOSS

Towbar Fitting Instructions  
To Suit Holden Rodeo 03-on WITH STEP  
Part Number QTHD313L  
Max Tow Weight: 2500 kg  
Max Ball Weight: 250 kg





Wiring Loom Fitting Instructions  
To Suit Holden Rodeo  
Rodeo LT 4x4 Turbo Diesel  
Rodeo LT 4x4 Turbo Diesel (2001 to 2007)  
Rodeo 2WD & 4WD

Part Number 100055-WL

## Wiring Loom Installation Instructions

Holden Rodeo  
Part No: 100055-WL

Tail Harness Length Required: 1200mm  
RPA Override Switch Part No: 04848 (If Fitted)

Wiring Loom Installation Time: Approx 20 Mins



Wiring Loom Fitting Instructions  
To Suit Holden Rodeo  
Rodeo LT 4x4 Turbo Diesel  
Rodeo LT 4x4 Turbo Diesel (2001 to 2007)  
Rodeo 2WD & 4WD

Part Number 100055-WL

1. Underneath the rear of the vehicle, locate and disconnect the LHS vehicle trailer break-out connector.
2. Secure the Tail Harness socket onto the towbar mounting bracket with fasteners.
3. Connect the Trailer Patch Harness (part no. 100055-WL) to the LHS break-out connector.
4. Route Tail Harness (length 1200mm) towards the Trailer Patch Harness and connect the Trailer Patch Harness to the Trailer tail Harness.
5. Secure the Trailer Patch Harness relays onto the interior vehicle sheet metal using tech screws. Secure the vehicle patch harness and Tail Harness connectors using cable ties (not supplied).
6. Test the Trailer socket using a light board or multi-meter.
7. Secure the all harnesses using cables ties (not supplied).
8. Refit all removed parts and secure all fasteners.
9. Place instructions in glove box after fitment.