



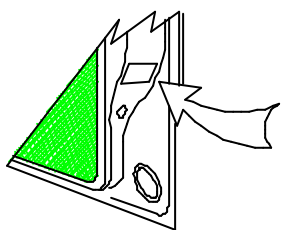
Tow bar Fitting Instructions
To Suit Holden Statesman & Caprice 08-2006-on
Part Number QTHD493
Rating 2100 kg

WARNING:

1. Do not, drill, cut, weld or otherwise modify the tow bar.
2. If you are using electric welding on a motor vehicle, **always** check that the vehicle is not equipped with electronic engine or instrument management equipment. Failure to do so could **destroy** any onboard computers. If in doubt, check with the vehicle's manufacturer.

General:

1. Ensure all hardware items have been included
2. It is recommended that the instructions are read through and completely understood before making any attempt to fit this product.
3. Be wary of any changes to vehicle designs or other accessories that may conflict with the installation of this product.
4. Before drilling ensure that the area is clear of fuel, electrical & other components.
5. All holes drilled into the body panels shall have all burrs & swarf removed then coated with a suitable rust preventative paint.
6. The high tensile fasteners supplied with this product were used to achieve the specified rating. If replacement is required ensure that fasteners of the same rating & quality are used. Contact an authorized **Trailboss** dealer if further information is required.
7. Ensure that all hardware is fastened to torque list below check fasteners on regular basis.
8. Tow bar load rating sticker provided with this product shall be conspicuously located on inside rear end of the driver's door. **(See diagram below).**
9. Trailboss recommends that you check your tow ball to ensure that it complies with the Australian standards **AS 4177.2**.
10. **PLEASE NOTE:** It is advised to remove your lug or tbm when not actually towing so as to produce a clear view of the vehicles registration plate if obscured, and to also provide maximum available departure angle



Place load rating sticker
inside driver's door here

FOR TOWING PURPOSES ONLY
For towing capacity details please refer to vehicle
owner's manual or to the manufacturer. Overloading
can void your warranties.

RECOMMENDED ASSEMBLY TORQUE LISTING
Diameter Grade 8.8 Bolt

M6	9.5 Nm
M8	21.7 Nm
M10	43.4 Nm
M12	77.3 Nm
M16	133.0 Nm

Tow bar Maintenance and Care.

Trailboss recommends that bolt torque's, as listed below, are routinely and regularly inspected and checked for correct tension. Replace any worn or defective parts.

We recommended to remove Tow Ball Mounts (TBM's, tongues or lugs) when not being used for any considerable length of time.

So as to avoid injury, when not towing it is suggested that the tongue, Pull Pin and R-clip are removed then stored in a safe, clean and dry place, away from excessive moisture.

Hitch Pull Pins and spring "R" clips are regularly checked for proper installation. Replace any worn or defective parts.

Tow bar Fitting Instructions To Suit Holden Statesman & Caprice 08-2006-on Part Number QTHD493 Rating 2100 kg

Rear luggage compartment & reverse sensors.

1. Open the rear luggage compartment then remove the spare wheel cover.
2. Remove the rear plastic trim via.
 - a. 4 plastic trim buttons 2 each side
 - b. Then pull in an upwards motion to remove.
3. Remove the left hand side trim panel via.
 - a. 1 plastic trim plug
 - b. Tabbed tongue on the top edge of the trim being careful not to tear.
 - c. Pull trim to the side repeat for right hand side.
4. Disconnect the rear parking sensors connector if fitted, and then pull through existing hole in trim

Rear bumper bar skin & impact beam removal.

5. Remove the rear bumper skin via.
 - a. 2 plastic scrivenets & 1 screw from inside the wheel arch each side (3 plastic scrivenets if fitted with mud flaps).
 - b. 3 plastic trim buttons from the underside of the bumper bar skin
 - c. Flex out the bar skin from the sides then pull reward to remove
 - d. Place bumper in a secure location to prevent damage
 - e. Remove the impact beam via 4 M 8 nuts 2 each side
 - f. Pull the impact beam rearward to remove retain the beam & M 8 nuts.

Removal of impact beam mounting brackets.

6. Remove the impact beam mounts via.
 - a. 4 M10 bolts from the inside the rear luggage compartment see fig1.
 - b. Pull rearward to remove left & right impact beam mount then discard mounts see fig 2.

4 M10 bolts inside
boot cavity



Fig 1

Impact beam mount
drivers side shown

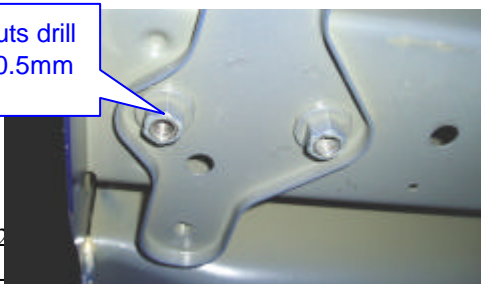


Fig 2

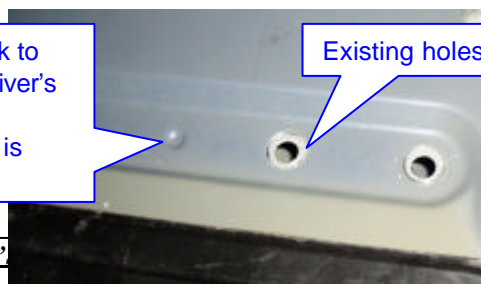
Drill through captive nuts & drill through chassis rails inside boot cavity.

7. From inside boot cavity using existing holes as guide drill captive nuts through 10.5 mm ensure that the thread is completely removed see fig 3.
8. From inside the boot cavity use centre pop mark as a guide drill through top surface on each side 10.5mm see fig 4.

Captive nuts drill
through 10.5mm



Centre pop mark to
drill 10.5 mm driver's
side shown
passenger side is
mirror image.



Existing holes



Tow bar Fitting Instructions To Suit Holden Statesman & Caprice 08-2006-on Part Number QTHD493 Rating 2100 kg

Fig 3

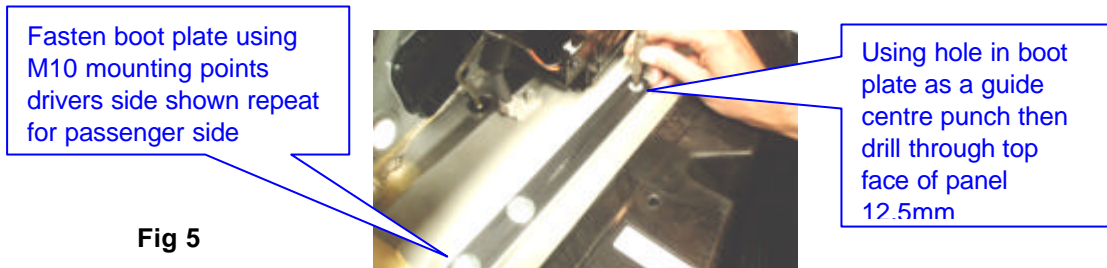


Fig 5

Fitment of tow bar to chassis rails.

9. Unbolt rear mufflers from hangers via 2 M8 bolts each side to aid fitment of loose plate to underside of chassis rails
10. Offer tow bar to chassis rails so to align the captive nuts on tow bar mounting arms with the existing holes see fig 4.
11. Some force may be required to slide the bar up the chassis rails
12. Fit boot plates M10 x 40 & M12 x 35 bolts with spring washers loosely inside boot cavity see fig 6.
13. Fit M10 x 40 bolts with flat & spring washers supplied to captives on the underside of the chassis rails loosely see fig 6.
14. Fit M12 x 40 bolts with loose plates & spring washers to the forward most mount on the under side of the chassis rails see fig 6, tighten fasteners to the torque listing on page 1.

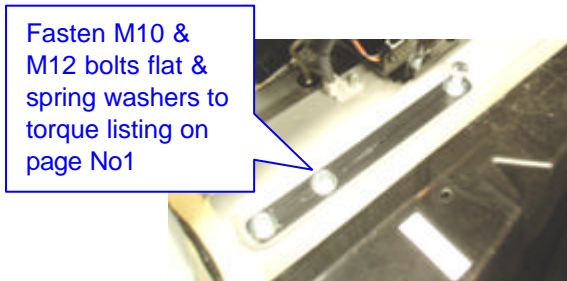
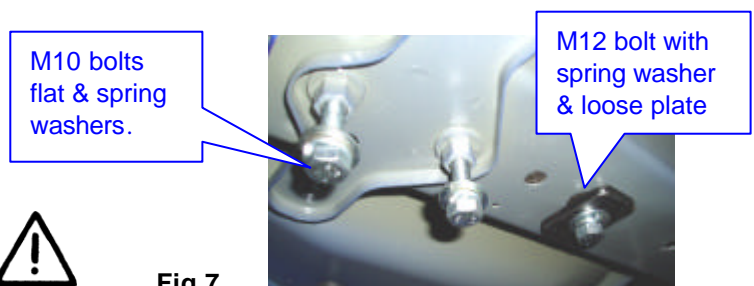


Fig 6



Fig 7

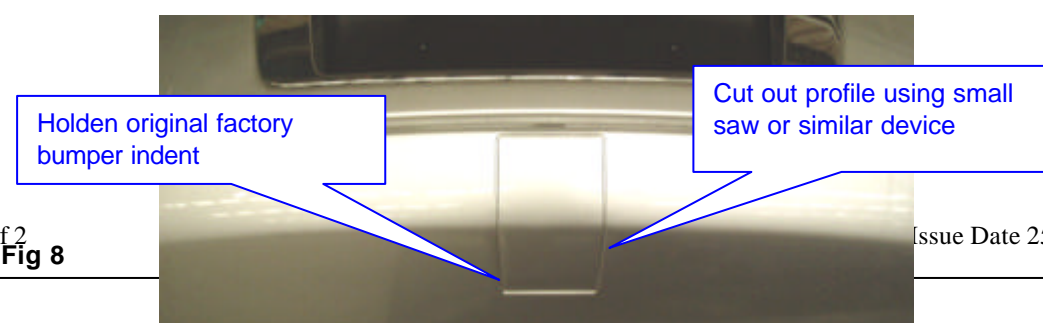


Refit the impact beam

15. Place impact beam over the M 8 x 35 bolts that protrude through the rear face of the tow bar side arms & fasten with original M8 nuts that fastened the impact beam retained in step No 5 e. tighten to torque listing on page 1.

Cut rear bumper skin

16. Using a small pilot drill to pierce through the bar skin to allow a small blade from a saw or similar device cut around the outline of the Holden factory indent in the rear bar skin see fig 8.
17. Clean all raw edges with a small file to ensure the neatness of the finished cut.



Tow bar Fitting Instructions
To Suit Holden Statesman & Caprice 08-2006-on
Part Number QTHD493
Rating 2100 kg

Refit the rear bumper bar skin

- Carefully maneuver the bumper bar skin with the centre bumper cut out over the hitch box ensuring not to damage the bar skin.
- Then refit the bumper in the reverse of steps 5 d to 5 a.

Refit the rear muffler & heat shield.

Refit the rear muffler & rear heat shield via the 2 M 8 bolts & tek screws as detailed in steps 9 & 10

Refit the rear luggage compartment & reverse sensors if fitted.

- Refit the trim on the inside of the rear luggage compartment in the reverse of step 4 through to step 1.

