

# TRAILBOSS

## Towbar Fitting Instructions To Suit **ISUZU M-UX 2013-ON** Part Number **QTHD521L** Rating **3000/300 kg**

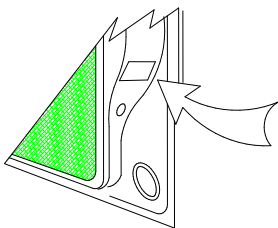
PLACE THESE INSTRUCTIONS IN THE VEHICLE'S GLOVEBOX AFTER INSTALLATION IS COMPLETED

### **WARNING:**

1. Do not, drill, cut, weld or otherwise modify the tow bar.
2. If you are using electric welding on a motor vehicle, **always** check that the vehicle is not equipped with electronic engine or instrument management equipment. Failure to do so could **destroy** any onboard computers. If in doubt, check with the vehicle's manufacturer.
3. The high tensile fasteners supplied with this product were used to achieve the specified rating. If replacement is required ensure that fasteners of the same rating & quality are used. Contact an authorised **Trailboss** dealer if further information is required.
4. If TBM is used in inverted position tow ball may make contact with rear tailgate when lowered, which could cause damage.

### **General:**

1. Ensure all hardware items have been included refer to assembly diagram.
2. It is recommended that the instructions are read through and completely understood before making any attempt to fit this product.
3. Be wary of any changes to vehicle designs or other accessories that may conflict with the installation of this product.
4. Before drilling ensure that the area is clear of fuel, electrical & other components.
5. All holes drilled into the body panels shall have all burrs & swarf removed then coated with a suitable rust preventative paint.
6. For vehicles that require the bumper to be cut. Ensure cut out area is in correct position on the vehicle prior to cutting the bumper.
7. The high tensile fasteners supplied with this product were used to achieve the specified rating. If replacement is required ensure that fasteners of the same rating & quality are used. Contact an authorized **Trailboss** dealer if further information is required.
8. Ensure that all hardware is fastened to torque list below check fasteners on regular basis.
9. Tow bar load rating sticker provided with this product shall be conspicuously located on inside rear end of the driver's door. **(See diagram below).**
10. Trailboss recommends that you check your tow ball to ensure that it complies with the Australian standards **AS 4177.2**.
11. **PLEASE NOTE:** It is advised to remove your lug or tbn when not actually towing so as to produce a clear view of the vehicles registration plate if obscured, and to also provide maximum available departure angle
12. Pull Pin must be fit in down position.



Place load rating sticker  
inside driver's door here

**FOR TRAILER TOWING PURPOSES ONLY**  
For towing capacity details please refer to vehicle owner's manual or to the manufacturer. Overloading can void your warranties.

### **RECOMMENDED ASSEMBLY TORQUE LISTING**

<u>Diameter</u>	<u>Grade 8.8 Bolt</u>
M6	9.5 Nm
M8	21.7 Nm
M10	43.4 Nm
M12	77.3Nm
M14	146 Nm
M16	189.8 Nm

### **Tow bar Maintenance and Care.**

Trailboss recommends that bolt torque's, as listed below, are routinely and regularly inspected and checked for correct tension. Replace any worn or defective parts.

We recommended to remove Tow Ball Mounts (TBM's, tongues or lugs) when not being used for any considerable length of time.

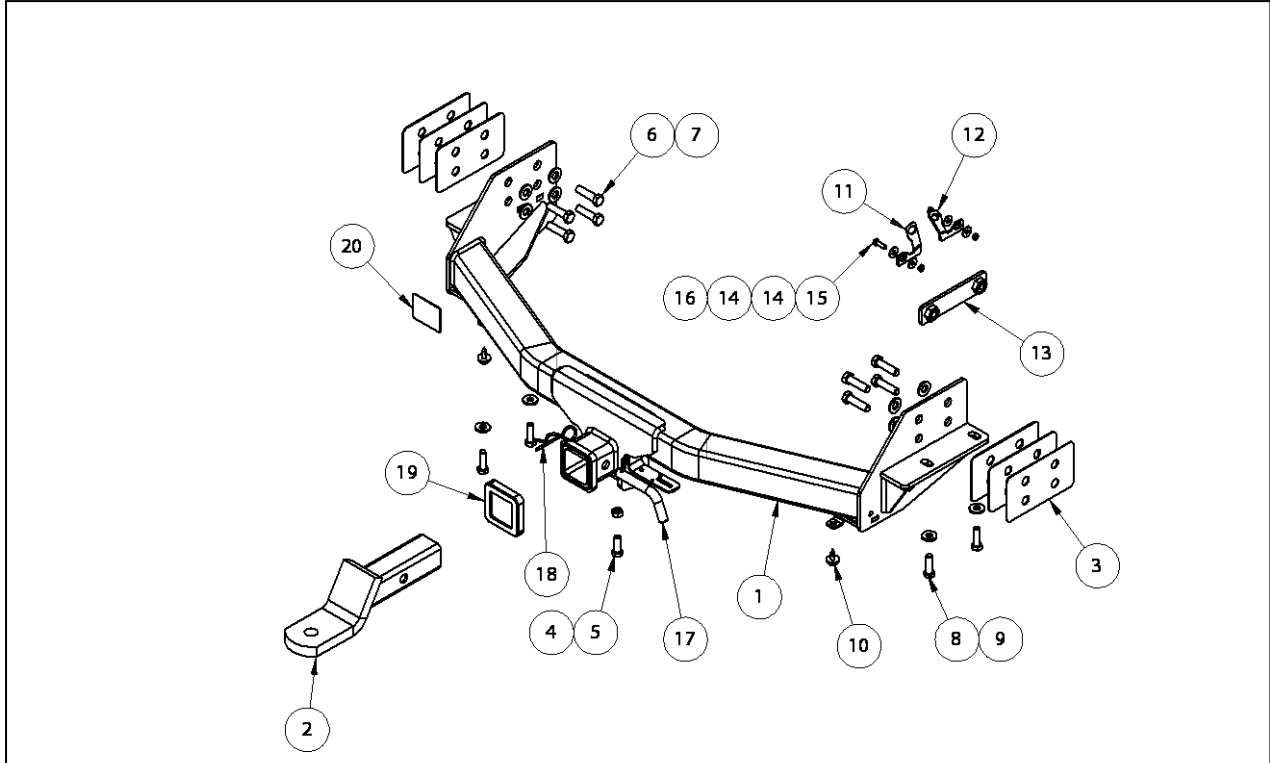
So as to avoid injury, when not towing it is suggested that the tongue, Pull Pin and R-clip are removed then stored in a safe, clean and dry place, away from excessive moisture.

Hitch Pull Pins and spring "R" clips are regularly checked for proper installation. Replace any worn or defective parts.

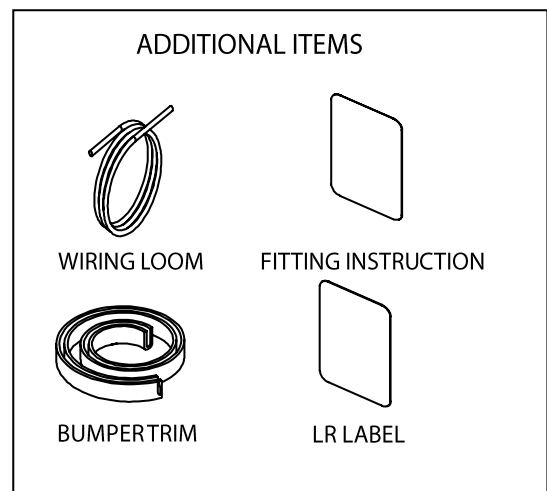
# TRAILBOSS

Towbar Fitting Instructions  
 To Suit **ISUZU M-UX 2013-ON**  
 Part Number **QTHD521L**  
 Rating **3000/300 kg**

PLACE THESE INSTRUCTIONS IN THE VEHICLE'S GLOVEBOX AFTER INSTALLATION IS COMPLETED



QTY	DESCRIPTION	ITEM NO
1	WELDED ASSEMBLY	1
1	CLASS 4 TBM	2
6	SHIM 2mm	3
1	HEX NUT M10x1.5	4
1	SET SCREW HEX HD M10x30x1.5P	5
8	SET SCREW M12x45x1.25P	6
8	WASHER FLAT 1/2"x1 1/8"x1/8"	7
4	SET SCREW HEX HD M10x35x1.25P	8
4	WASHER FT M10x25.4 x3	9
2	SCRIVET - 010-0175	10
1	RHS BUMPER TAB	11
1	LHS BUMPER TAB	12
1	NUT PLATE	13
4	1-4x3-4x16g BRT FT WASHER	14
2	BOLT M6x20 GR 8.8 z/p	15
2	HEX NUT M6x1.0	16
1	PULL PIN	17
1	R CLIP	18
1	HITCH BOX COLLAR COVER	19
1	ACRYLIC COMPLIANCE PLATE	20





Towbar Fitting Instructions  
To Suit **ISUZU M-UX 2013-ON**  
Part Number **QTHD521L**  
Rating **3000/300 kg**

PLACE THESE INSTRUCTIONS IN THE VEHICLE'S GLOVEBOX AFTER INSTALLATION IS COMPLETED

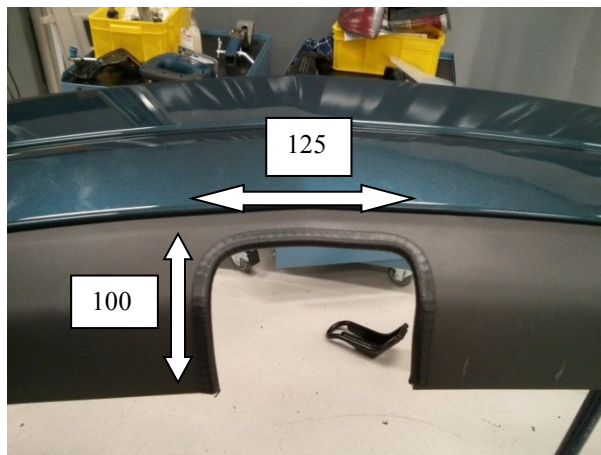
**INSTRUCTION:**

1. Release the Rear Tail gate to expose the Tail Light and inside lip of the Rear Bumper. Remove 2x Set Screws directly under the tail light mounting section. Repeat for Passenger and Drivers side.
2. Remove 2x Set Screws directly above the mud flaps and on the inside of the mud flap. Repeat for Passenger and Driver side.
3. Remove 1x Trim Clip on the underside of the Bumper. Repeat for Passenger and Driver side.
4. On the underside of the Bumper remove 6x Trim clips. Now carefully remove the Bumper disconnecting any plugs for reverse parking sensors.  
  
Disconnect the 3x Bumper Tabs from vehicle and discard. (Centre and Drivers side shown)  
  
Lower the tire, if access to centre. Bumper tab is obstructed by Spare tire.
5. Remove 2x Set Screws to remove the factory two Hook and discard.
6. Insert tapped plate into Drivers side Chassis rail.
7. Offer Towbar to vehicle, using Shim plates supplied to ensure a snug fit between the side plates and Chassis Rail.  
  
Use horizontal Bolts first to help position the Towbar.  
  
Tighten the Bolts to the recommended specifications listed on page 2. Ensure that the vertical bolts are tightened first, then horizontal Bolts
8. From the centre of the Bumper, use appropriate tools to create a Bumper Cut.  
  
Make a cut approximately 125mm wide, and a length of 100mm following the surface, starting from the bottom of the Bumper.  
  
Use the pinch weld supplied to cover over the cut.
9. On the fold line either side of the bumper cut a slot 30mm deep from the edge of the bumper and 50mm outboard. Follow the profile of the bumper to ensure a smooth contour.
10. Repeat for both Passenger and Drivers of the bumper.
11. Attach bumper brackets to existing bumper tabs on Towbar with M6x20 Bolts and M6 Nuts.
12. Reattach Bumper using steps in reverse. Use Scrivets supplied to fix the bumper to the Towbar.

# TRAILBOSS

Towbar Fitting Instructions  
To Suit **ISUZU M-UX 2013-ON**  
Part Number **QTHD521L**  
Rating **3000/300 kg**

PLACE THESE INSTRUCTIONS IN THE VEHICLE'S GLOVEBOX AFTER INSTALLATION IS COMPLETED





Wiring Loom Fitting Instructions  
To Suit Holden Colorado & Rodeo (Up to 07/2012) / D-Max MY12 / ISUZU MU-X  
Part Number 100055-WL

**Wiring Loom Installation Instructions**

**Holden Colorado & Rodeo (Up to 07/2012) (Page 2)**

**D-Max MY12 (Pages 2)**

**ISUZU MU-X (Pages 3)**

**Part No: 100055-WL**

**Tail Harness Length Required: 1200mm**

**Wiring Loom Installation Time: Approx 20 Mins**



Wiring Loom Fitting Instructions  
To Suit Holden Colorado & Rodeo (Up to 07/2012) / D-Max MY12 / ISUZU MU-X  
Part Number 100055-WL

1. Underneath the rear of the vehicle, locate and disconnect the LHS vehicle trailer break-out connector.

**Note: Depending on the type of the breakout connector presented at the vehicle, ensure to use the appropriate patch piece.**

2. Secure the Tail Harness socket onto the towbar mounting bracket with fasteners.
3. Connect the Trailer Patch Harness (part no. 100055-WL) to the LHS break-out connector.
4. Route Tail Harness (length 1200mm) towards the Trailer Patch Harness and connect the Trailer Patch Harness to the Trailer tail Harness.
5. Secure the Trailer Patch Harness relays onto the interior vehicle sheet metal using tech screws.
6. Secure the vehicle patch harness and Tail Harness connectors using cable ties.
7. Test the Trailer socket using a light board or multi-meter.
8. Secure the all harnesses using cables ties (not supplied).
9. Refit all removed parts and secure all fasteners.
10. Place instructions in glove box after fitment.



Wiring Loom Fitting Instructions  
To Suit Holden Colorado & Rodeo (Up to 07/2012) / D-Max MY12 / ISUZU MU-X  
Part Number 100055-WL

1. Underneath the rear of the vehicle, locate and disconnect the LHS vehicle trailer break-out connector. **Note: Depending on the type of breakout connector presented at the vehicle, ensure to use the appropriate patch piece.**
2. Connect the trailer patch harness (P/No:100055-WL) to the LHS break-out connector.
3. From the outside rear of the vehicle, secure the tail harness (tail length: 1200mm) socket to the towbar mounting bracket using M4 fasteners (not supplied).
4. In the bumper cavity area, connect the tail harness 8-way connector to the trailer patch 8-way mating connector. **Waterproof the trailer patch 8-way connector and the tail harness 8-way male connector using silicone or grease.**
5. Test the Tail Harness socket using a light board or multi-meter.
6. Secure all harnesses using cables ties (not supplied).
7. Re-fit all removed parts and secure all fasteners ensuring there are no squeaks or rattles.
8. Place instructions in glove box after fitment.