

TRAILBOSS

Towbar Fitting Instructions To Suit HOLDEN CAPTIVA 7 CG SERIES Part Number QTHD522L Rating 2000/158 kg

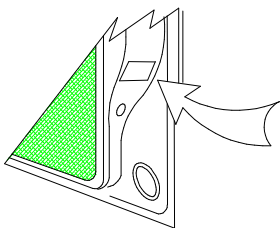
PLACE THESE INSTRUCTIONS IN THE VEHICLE'S GLOVEBOX AFTER INSTALLATION IS COMPLETED

WARNING:

1. Do not, drill, cut, weld or otherwise modify the tow bar.
2. If you are using electric welding on a motor vehicle, **always** check that the vehicle is not equipped with electronic engine or instrument management equipment. Failure to do so could **destroy** any onboard computers. If in doubt, check with the vehicle's manufacturer.
3. The high tensile fasteners supplied with this product were used to achieve the specified rating. If replacement is required ensure that fasteners of the same rating & quality are used. Contact an authorized **Trailboss** dealer if further information is required.
4. If TBM is used in inverted position tow ball may make contact with rear tailgate when lowered, which could cause damage.

General:

1. Ensure all hardware items have been included refer to assembly diagram.
2. It is recommended that the instructions are read through and completely understood before making any attempt to fit this product.
3. Be wary of any changes to vehicle designs or other accessories that may conflict with the installation of this product.
4. Before drilling ensure that the area is clear of fuel, electrical & other components.
5. All holes drilled into the body panels shall have all burrs & swarf removed then coated with a suitable rust preventative paint.
6. For vehicles that require the bumper to be cut. Ensure cut out area is in correct position on the vehicle prior to cutting the bumper.
7. The high tensile fasteners supplied with this product were used to achieve the specified rating. If replacement is required ensure that fasteners of the same rating & quality are used. Contact an authorized **Trailboss** dealer if further information is required.
8. Ensure that all hardware is fastened to torque list below check fasteners on regular basis.
9. Tow bar load rating sticker provided with this product shall be conspicuously located on inside rear end of the driver's door. **(See diagram below).**
10. Trailboss recommends that you check your tow ball to ensure that it complies with the Australian standards **AS 4177.2.**
11. **PLEASE NOTE:** It is advised to remove your lug or tbn when not actually towing so as to produce a clear view of the vehicles registration plate if obscured, and to also provide maximum available departure angle
12. Pull Pin must be fit in down position.



Place load rating sticker
inside driver's door here

FOR TRAILER TOWING PURPOSES ONLY
For towing capacity details please refer to vehicle owner's manual or to the manufacturer. Overloading can void your warranties.

RECOMMENDED ASSEMBLY TORQUE LISTING

<u>Diameter</u>	<u>Grade 8.8 Bolt</u>
M6	9.5 Nm
M8	21.7 Nm
M10	43.4 Nm
M12	77.3Nm
M14	146 Nm
M16	189.8 Nm

Tow bar Maintenance and Care.

Trailboss recommends that bolt torque's, as listed below, are routinely and regularly inspected and checked for correct tension. Replace any worn or defective parts.

We recommended to remove Tow Ball Mounts (TBM's, tongues or lugs) when not being used for any considerable length of time.

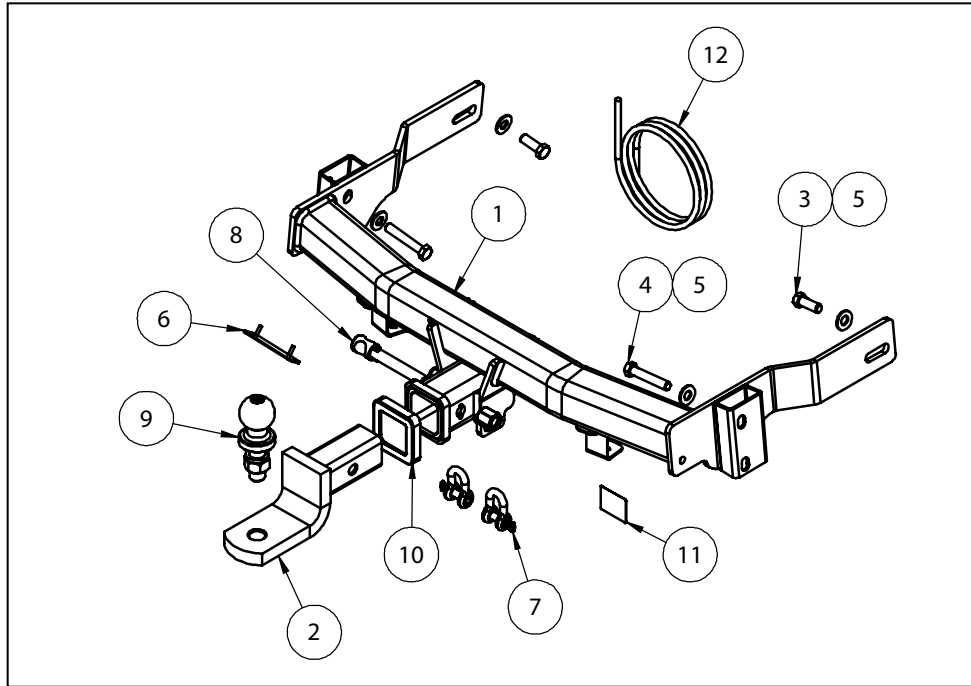
So as to avoid injury, when not towing it is suggested that the tongue, Pull Pin and R-clip are removed then stored in a safe, clean and dry place, away from excessive moisture.

Hitch Pull Pins and spring "R" clips are regularly checked for proper installation. Replace any worn or defective parts.

TRAILBOSS

Towbar Fitting Instructions
To Suit HOLDEN CAPTIVA 7 CG SERIES
Part Number QTHD522L
Rating 2000/158 kg

PLACE THESE INSTRUCTIONS IN THE VEHICLE'S GLOVEBOX AFTER INSTALLATION IS COMPLETED



QTY.	DESCRIPTION	ITEM NO.
1	WELDED ASSY	1
1	TBM ASSY	2
2	SET SCREW M12x35 1.75P	3
4	BOLT M12x70x1.75P	4
6	WASHER FLAT M12	5
1	PLUG BRACKET	6
2	10mm "D" SHACKLE	7
1	ANTI-RATTLE PULL PIN ASSY	8
1	50mm TOWBALL	9
1	HITCH BOX COLLAR COVER	10
1	TRAILBOSS ADR LABEL	11
1	WIRING LOOM	12



Towbar Fitting Instructions
To Suit HOLDEN CAPTIVA 7 CG SERIES
Part Number QTHD522L
Rating 2000/158 kg

PLACE THESE INSTRUCTIONS IN THE VEHICLE'S GLOVEBOX AFTER INSTALLATION IS COMPLETED

INSTRUCTION:

1. Open the vehicle tail gate.
2. Remove 2 Screws on the RHS tail light located under the plastic covers. Repeat for LHS.
3. Dislodge the RHS tail light and set aside. Repeat for LHS.
4. Remove 3 Screws on the RHS of the bumper. Repeat for LHS.
5. Remove 3 Screws on the inside RHS of the mud flap and wheel arch. Repeat for LHS.
6. Remove 2 Scrivets and 1 screw from the underside of the bumper on the RHS. Repeat for LHS.
7. Unclip the bumper and set aside.
8. Remove 3 Bolts from the RHS of the intrusion beam. Repeat for LHS.
9. Remove intrusion beam and discard.
10. Drop the RHS exhaust hanger. Repeat for LHS.
11. Offer the Towbar to the vehicle mounting via 3 Bolts per side.
12. Torque all bolts to required specifications as listed on page 1.
13. Perform a bumper cut:
 - Pre MY14, establish the centre line of the bumper and measure 45mm from centre line each side. Measure 110mm from bottom edge of bumper, and cut out using a Stanley knife or air saw.
 - MY14 onwards as per the template on page 5.
14. Refit bumper and tail lights to the vehicle.



Towbar Fitting Instructions
To Suit HOLDEN CAPTIVA 7 CG SERIES
Part Number QTHD522L
Rating 2000/158 kg

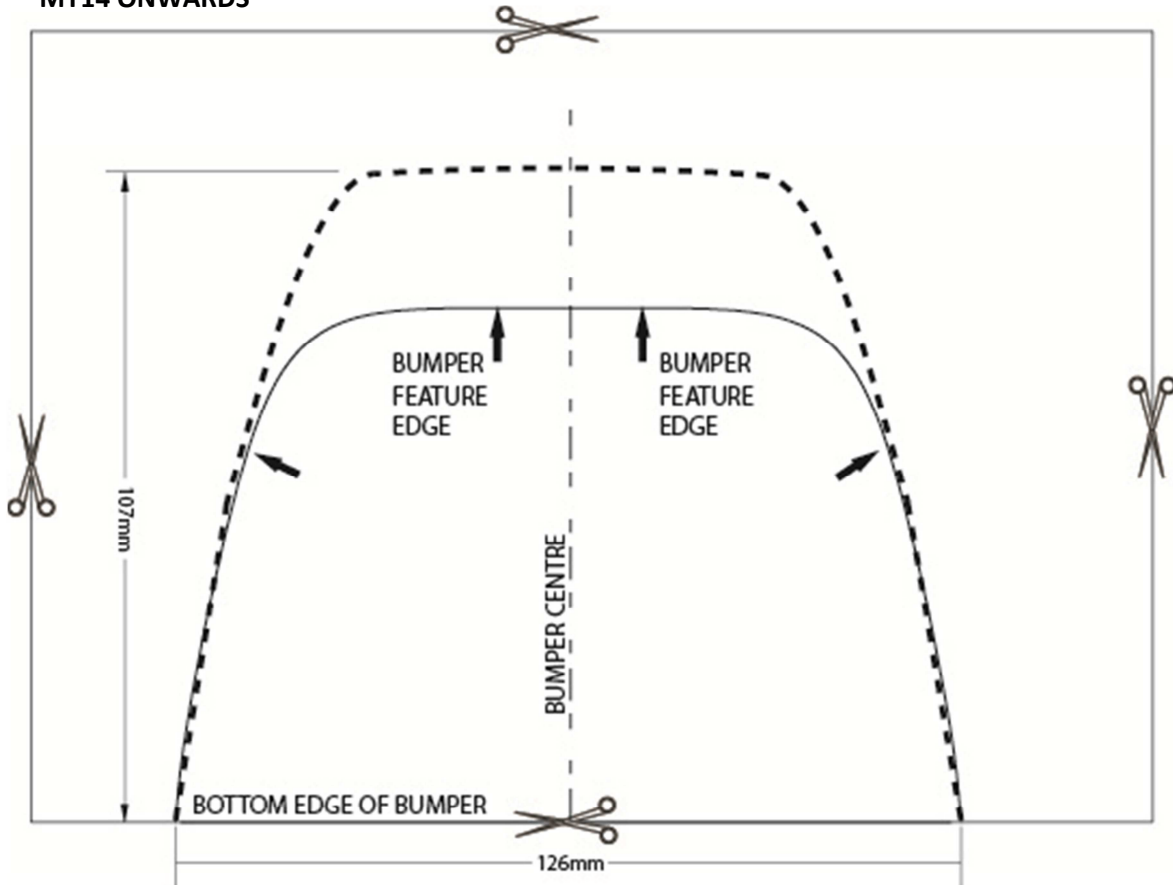
PLACE THESE INSTRUCTIONS IN THE VEHICLE'S GLOVEBOX AFTER INSTALLATION IS COMPLETED

THIS PAGE HAS BEEN LEFT INTENTIONALLY BLANK

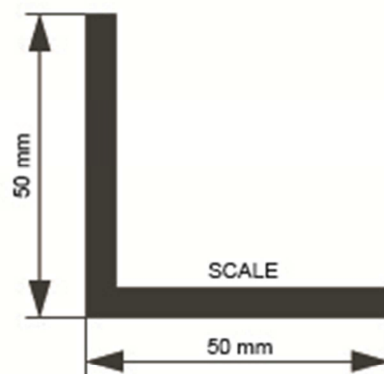
Towbar Fitting Instructions
To Suit HOLDEN CAPTIVA 7 CG SERIES
Part Number QTHD522L
Rating 2000/158 kg

PLACE THESE INSTRUCTIONS IN THE VEHICLE'S GLOVEBOX AFTER INSTALLATION IS COMPLETED

MY14 ONWARDS



1. Check all dimensions are to scale.
2. Locate the centre of the rear bumper.
3. Cut out the bumper template and align with the centre of the bumper & bumper features.
4. Using a stanley knife or air saw, cut along the dotted lines.





Wiring Loom Fitting Instructions
To Suit Holden Captiva
Part Number 100405-WL

Wiring Loom Installation Instructions

Holden Captiva
Part No: 100405-WL

Tail Harness Length Required: 1200mm
ECU Required Part No: 04830
RPA Override Switch Part No: 04848 (If Fitted)

Wiring Loom Installation Time: Approx 20 Mins



Wiring Loom Fitting Instructions
To Suit Holden Captiva
Part Number 100405-WL

1. In the luggage compartment, remove the RHS storage compartment cover.
2. Remove the RHS storage compartment by removing the fastener at the bottom.
3. Locate the RHS 16-way breakout connector.
4. Drill a Ø31mm hole in the sheet metal in the area near to the vehicle grommet. File down any rough or sharp edges and then spray on rust inhibitor.
5. Mount the tail harness socket (tail length 1200mm) to the towbar mounting bracket using M4 fasteners (not supplied).
6. Route the tail harness connector into the drilled out hole. Adjust the tail harness grommet into place ensuring it is seated correctly. Secure the tail harness grommet into place using a cable tie (not supplied).
7. Connect the trailer harness (P/No:100405-WL) 16-way connector to the vehicle breakout connector.
8. Connect the tail harness connector to the trailer harness mating connector.
9. Connect the 12-way trailer patch connector to the ECU.
10. Peel the adhesive backing on the ECU and adhere the ECU to vehicle sheet metal in the area under the RHS storage compartment.
11. Test the Trailer socket using a light board or multi-meter.
12. Secure the all harnesses using cables ties (not supplied).
13. Refit all removed parts and secure all fasteners.
14. Place instructions in glove box after fitment.



FITTING INSTRUCTIONS

Silent Anti-Rattle Hitch Pin (PR0001)

• These fitting instructions are supplied to ensure understanding of how the HITCH PIN should be fitted and used correctly.

• Once installed, we recommend **ALL** instructions are kept and placed in the vehicle glove box.

NOTE: Routine maintenance and inspection of the towbar & HITCH PIN is required. Regularly inspect for wear and check the tightness of the Hitch Pin. Follow instructions below to retighten the nut when necessary.

***Do not tow with your vehicle if the R CLIP or the HITCH PIN is loose or missing. Replacement parts are available from your Pro Series Distributor.**

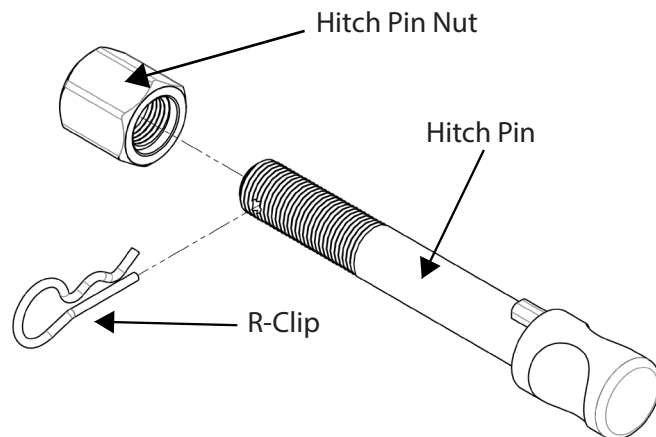


Fig 1. Silent Anti-Rattle Hitch Pin assembly

STEP 1

Insert Trailer Ball Mount (TBM) into towbar HITCHBOX, aligning hole in TBM SHANK with hole in HITCHBOX (Fig 2).

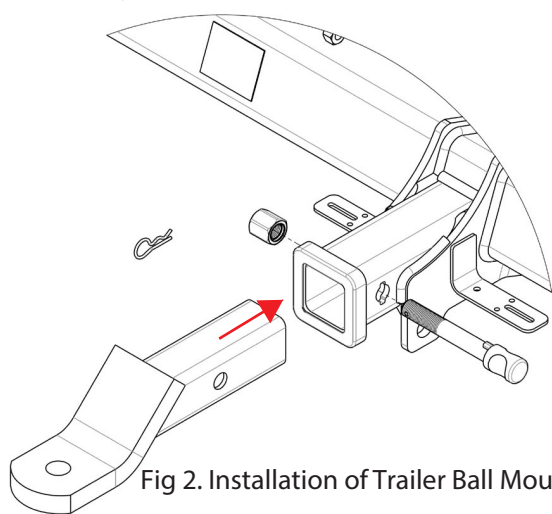


Fig 2. Installation of Trailer Ball Mount

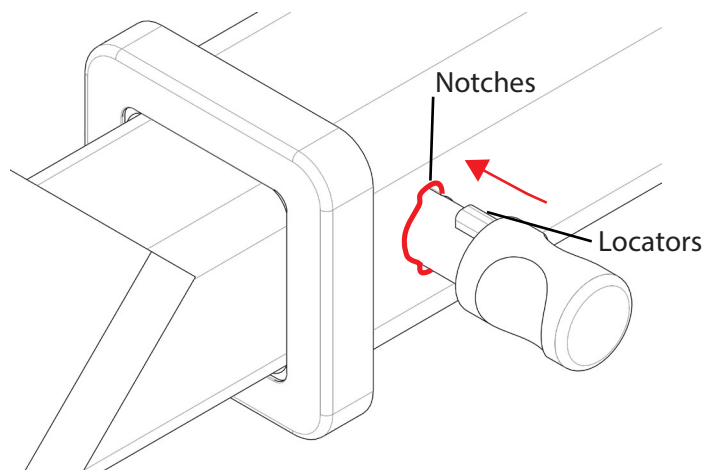


Fig 3. Silent Anti-Rattle Hitch Pin orientation

STEP 2

Insert HITCH PIN through hole in HITCHBOX and hole in TBM SHANK; ensure the LOCATORS are inserted into the NOTCHES in the HITCHBOX (Fig. 3).

STEP 3

Screw HITCH PIN NUT onto HITCH PIN; tighten HITCH PIN NUT until finger tight, ensuring TBM is restrained from movement.

STEP 4

Tighten HITCH PIN NUT by turning nut a further 1/8th of a turn in the clockwise direction using a 24mm spanner (Fig. 4).

STEP 5

Install HITCH PIN R CLIP through the hole on the HITCH PIN (Fig. 1).

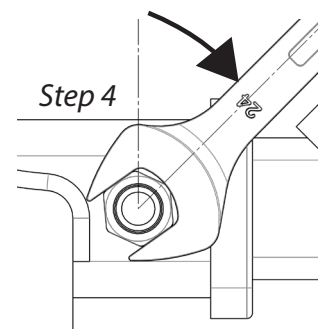


Fig 4. Tightening of Silent Anti-Rattle Hitch Pin Nut