

TRAILBOSS

Towbar Fitting Instructions To Suit **HOLDEN COMMODORE ZB CL4** Part Number **QTHD774L** Rating **2100/90 kg**

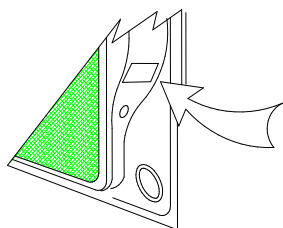
PLACE THESE INSTRUCTIONS IN THE VEHICLE'S GLOVEBOX AFTER INSTALLATION IS COMPLETED

WARNING:

1. Do not, drill, cut, weld or otherwise modify the tow bar.
2. If you are using electric welding on a motor vehicle, **always** check that the vehicle is not equipped with electronic engine or instrument management equipment. Failure to do so could **destroy** any onboard computers. If in doubt, check with the vehicle's manufacturer.
3. The high tensile fasteners supplied with this product were used to achieve the specified rating. If replacement is required ensure that fasteners of the same rating & quality are used. Contact an authorised **Trailboss** dealer if further information is required.
4. If TBM is used in inverted position tow ball may make contact with rear tailgate when lowered, which could cause damage.

General:

1. Ensure all hardware items have been included refer to assembly diagram.
2. It is recommended that the instructions are read through and completely understood before making any attempt to fit this product.
3. Be wary of any changes to vehicle designs or other accessories that may conflict with the installation of this product.
4. Before drilling ensure that the area is clear of fuel, electrical & other components.
5. All holes drilled into the body panels shall have all burrs & swarf removed then coated with a suitable rust preventative paint.
6. For vehicles that require the bumper to be cut. Ensure cut out area is in correct position on the vehicle prior to cutting the bumper.
7. The high tensile fasteners supplied with this product were used to achieve the specified rating. If replacement is required ensure that fasteners of the same rating & quality are used. Contact an authorized **Trailboss** dealer if further information is required.
8. Ensure that all hardware is fastened to torque list below check fasteners on regular basis.
9. Tow bar load rating sticker provided with this product shall be conspicuously located on inside rear end of the driver's door. **(See diagram below).**
10. Trailboss recommends that you check your tow ball to ensure that it complies with the Australian standards **AS 4177.2**.
11. **PLEASE NOTE:** It is advised to remove your LUG or TBM when not actually towing so as to produce a clear view of the vehicles registration plate if obscured, and to also provide maximum available departure angle



Place load rating sticker
inside driver's door here

FOR TRAILER TOWING PURPOSES ONLY
For towing capacity details please refer to vehicle owner's manual or to the manufacturer. Overloading can void your warranty.

RECOMMENDED ASSEMBLY TORQUE LISTING

Diameter	Grade 8.8 Bolt
M6	9.5 Nm
M8	21.7 Nm
M10	43.4 Nm
M12	77.3Nm
M14	146 Nm

Tow bar Maintenance and Care.

Trailboss recommends that bolt torque's, as listed below, are routinely and regularly inspected and checked for correct tension. Replace any worn or defective parts.

We recommended to remove Tow Ball Mounts (TBM's, tongues or lugs) when not being used for any considerable length of time. So as to avoid injury, when not towing it is suggested that the tongue, Pull Pin and R-clip are removed then stored in a safe, clean and dry place, away from excessive moisture.

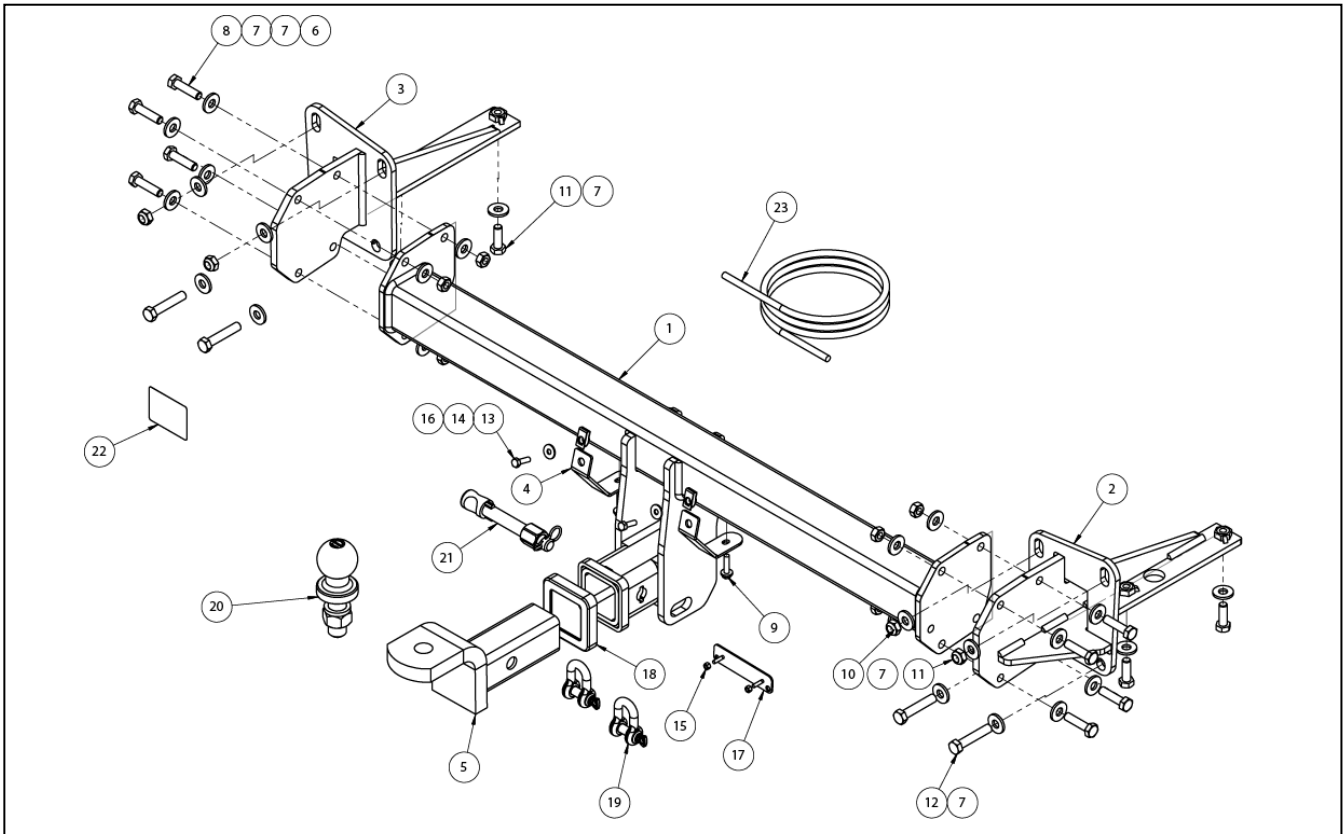
Hitch Pull Pins and spring "R" clips are regularly checked for proper installation. Replace any worn or defective parts.

Cequent Customer Service
Ph: 1800 812 017 Fax: 03 9898 3299
Email: info@cequent.com.au
Post: PO Box 4050, Dandenong South VIC 3175

TRAILBOSS

Towbar Fitting Instructions
 To Suit **HOLDEN COMMODORE ZB CL4**
 Part Number **QTHD774L**
 Rating **2100/90 kg**

PLACE THESE INSTRUCTIONS IN THE VEHICLE'S GLOVEBOX AFTER INSTALLATION IS COMPLETED



ITEM	DESCRIPTION	QTY	ITEM	DESCRIPTION	QTY
1	HOLDEN WAGON WELDED ASSY	1	13	SET SCREW M6 x 20 GR 8.8 Z/P	2
2	SIDE ARM ASSY RH	1	14	WASHER FLAT M6x18x1.5	2
3	SIDE ARM ASSY LH	1	15	NUT NYLON LOCK HEX HD M4X0.7P G8	2
4	BUMPER TAB	2	16	CLIP NUT 6MM	2
5	TRAILER BALL MOUNT	1	17	VE PLUG BRACKET	1
6	NUT HEX HD M10 X 1.25P G8	8	18	HITCH BOX COLLAR COVER	1
7	WASHER PLAIN M10 X 25 X 3	28	19	"D" SHACKLE 10MM	2
8	BOLT HEX HD M10 X 40 X 1.25P G10.9	8	20	TOWBALL 50MM	1
9	TEK SCREW 14-10 HEX HD 25MM	2	21	SILENT HITCH PIN - SILVER	1
10	NUT M10 NYLOC	4	22	ACRYLIC COMPLIANCE LABEL	1
11	SETSCREW HXHD M10X30X1.5P G8.8	4	23	WIRING LOOM	1
12	BOLT M10 - 1.5 x 55MM	4			

Cequent Customer Service
 Ph: 1800 812 017 Fax: 03 9898 3299
 Email: info@cequent.com.au
 Post: PO Box 4050, Dandenong South VIC 3175

TRAILBOSS

Towbar Fitting Instructions
To Suit **HOLDEN COMMODORE ZB CL4**
Part Number **QTHD774L**
Rating **2100/90 kg**

PLACE THESE INSTRUCTIONS IN THE VEHICLE'S GLOVEBOX AFTER INSTALLATION IS COMPLETED

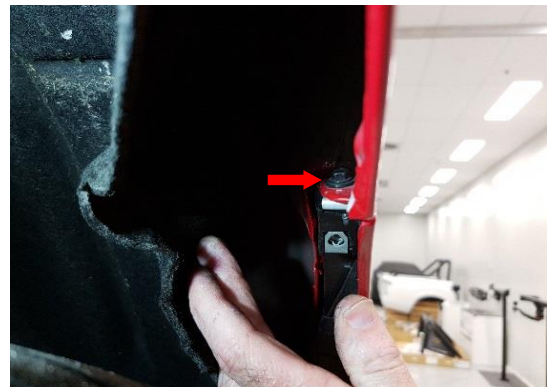
1. In wheel arch, remove 4 x Torx screws.

Repeat for other side

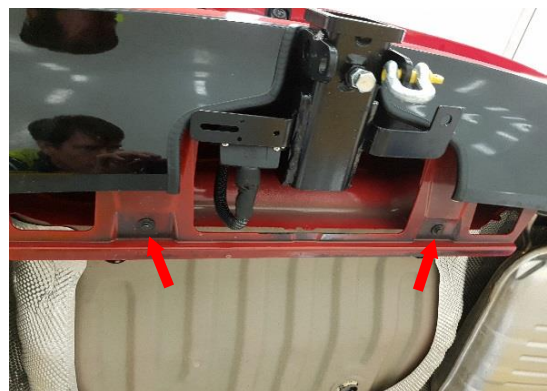


2. In the wheel arch peel back the trim and remove the exposed 1 x Screw.

Repeat for other side.



3. Under bumper, remove 2 x screws.



Cequent Customer Service
Ph: 1800 812 017 Fax: 03 9898 3299
Email: info@cequent.com.au
Post: PO Box 4050, Dandenong South VIC 3175

Towbar Fitting Instructions
To Suit **HOLDEN COMMODORE ZB CL4**
Part Number **QTHD774L**
Rating **2100/90 kg**

PLACE THESE INSTRUCTIONS IN THE VEHICLE'S GLOVEBOX AFTER INSTALLATION IS COMPLETED

4. Remove the Number Plate and remove the exposed 2 x screws securing the bumper to the back panel.

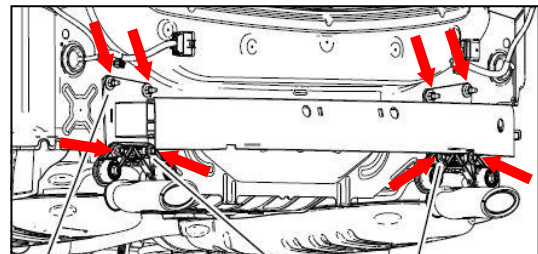


5. Peel away bumper from the sides and remove from vehicle. Ensure to disconnect the electrical harness (RH side).

Set bumper aside in a safe location.

6. Remove the 4 x Nuts on the top and 4 x Bolts on the bottom that secure the impact beam and the exhaust brackets.

Discard the impact beam along with the fasteners.



Cequent Customer Service

Ph: 1800 812 017 Fax: 03 9898 3299

Email: info@cequent.com.au

Post: PO Box 4050, Dandenong South VIC 3175

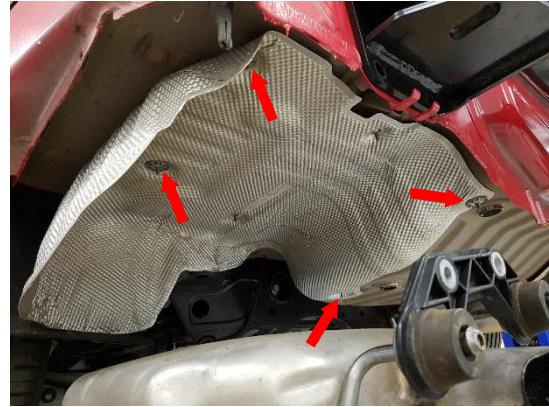
TRAILBOSS

Towbar Fitting Instructions
To Suit **HOLDEN COMMODORE ZB CL4**
Part Number **QTHD774L**
Rating **2100/90 kg**

PLACE THESE INSTRUCTIONS IN THE VEHICLE'S GLOVEBOX AFTER INSTALLATION IS COMPLETED

7. Lower the LH and RH mufflers.

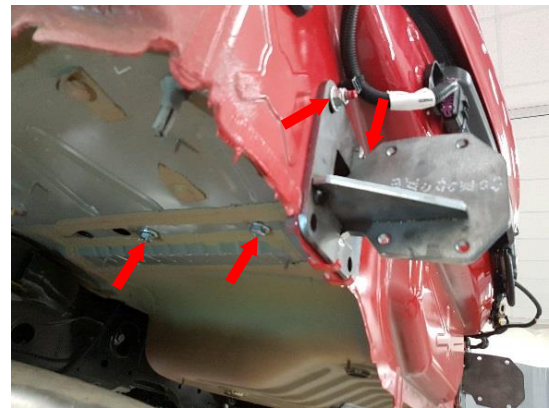
8. Remove the LH and RH heat shields secured with screw on retainers to gain access to the chassis rails.



9. Insert the LH side arm assembly into the chassis rail and loosely secure with 2 x M10 bolts complete with 1 x washer per bolt.

10. Loosely secure (only) the top side arm mountings with 2 x Nylocs complete with 1 x washer per nyloc.

Repeat for other side.



11. Lift cross tube to the side arms and loosely secure with 8 x M10 bolts complete with 2 x washers and 1 x nut per bolt.



Cequent Customer Service

Ph: 1800 812 017 Fax: 03 9898 3299

Email: info@cequent.com.au

Post: PO Box 4050, Dandenong South VIC 3175

TRAILBOSS

Towbar Fitting Instructions
To Suit **HOLDEN COMMODORE ZB CL4**
Part Number **QTHD774L**
Rating **2100/90 kg**

PLACE THESE INSTRUCTIONS IN THE VEHICLE'S GLOVEBOX AFTER INSTALLATION IS COMPLETED

12. Tighten the 2 x M10 bottom fasteners.
Torque to 44Nm.

Repeat for other side.

13. Refit the 2 x heat shields removed in step 8.



14. Raise the muffler and loosely secure the muffler brackets along with the bottom holes on the side arm brackets with 2 x M10 bolts complete with 1 x washer per bolt to the back panel.

Repeat for other side.

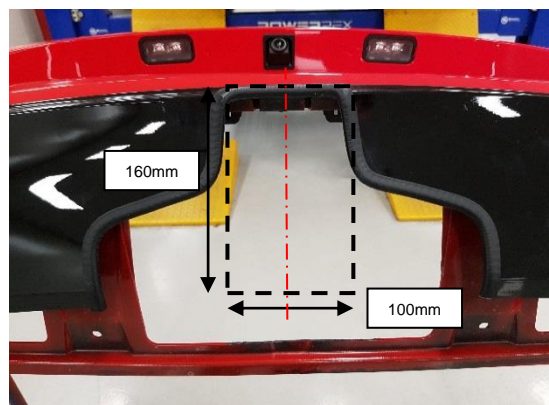
15. Tighten all the fasteners to the torques as specified:

Cross tube to side arms M10 (10.9) : 68Nm
M10 Nyloc : 44Nm
M10 Bolt to rear panel : 44Nm



16. Working on the outside of the bumper panel, locate the centre, mark off and cut out 100mm wide and 160mm long as measured from the edge of the bumper. (The cut should stop at the first style line)

NOTE: The bumper has an inner skin panel that requires some material removal.



Cequent Customer Service

Ph: 1800 812 017 Fax: 03 9898 3299

Email: info@cequent.com.au

Post: PO Box 4050, Dandenong South VIC 3175

TRAILBOSS

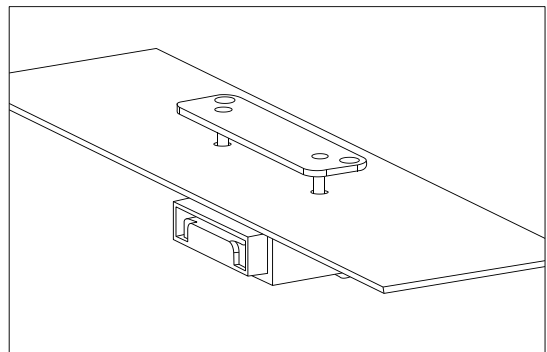
Towbar Fitting Instructions
To Suit **HOLDEN COMMODORE ZB CL4**
Part Number **QTHD774L**
Rating **2100/90 kg**

PLACE THESE INSTRUCTIONS IN THE VEHICLE'S GLOVEBOX AFTER INSTALLATION IS COMPLETED

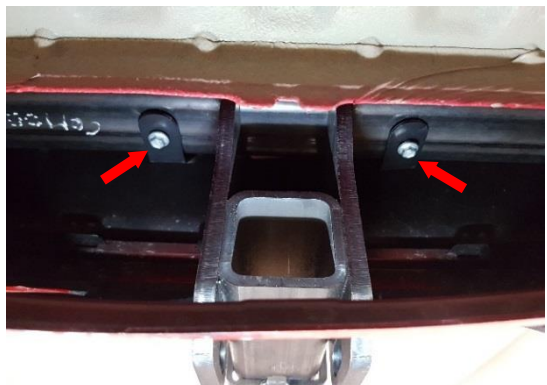
17. Fit the clip nuts to the 2 x bumper brackets and loosely secure to the inside of the bumper with 1x M6 bolt complete with 1 x washer.



18. At an appropriate position on the bumper, mark out and drill 2x ø5mm holes 69mm apart on bumper skin to support plug bracket. Feed bracket threads through drilled holes prior to reinstalling bumper.



19. Refit the bumper to the vehicle.
20. Secure the bumper brackets to the cross tube with 2 x tek screws.
21. Refit all removed fasteners following steps 1-4 in reverse.



Cequent Customer Service
Ph: 1800 812 017 Fax: 03 9898 3299
Email: info@cequent.com.au
Post: PO Box 4050, Dandenong South VIC 3175



Wiring Loom Fitting Instructions
To Suit Holden Commodore ZB Wagon
Part Number 101996-WL

Wiring Loom Installation Instructions

Holden Commodore ZB Wagon

Part No: 101996-WL

ECU: 04839

Tail Harness Part No: WLT-019

RPA Disable: Near Transmission Lever

Electric Brake Input Location: Near Blue Connector

Wiring Loom Installation Time: Approx 15 Mins



Wiring Loom Fitting Instructions
To Suit Holden Commodore ZB Wagon
Part Number 101996-WL

1. In the boot, remove the LHS cover.
2. **For V6 AWD variants:** In the boot, disconnect the negative battery terminal.
3. **For V6 AWD variants:** In the LHS rear quarter panel in front of the battery towards the tail light, locate the vehicle grey pre-wire connector.
4. **For V6 AWD variants:** Connect the trailer patch (101996-WL) 13-way grey connector to the vehicle pre-wire connector.
5. **For I4 FWD variant:** In the engine bay, disconnect the negative battery terminal.
6. **For I4 FWD variant:** In the LHS rear quarter panel towards the tail light, locate the vehicle grey pre-wire connector.
7. **For I4 FWD variant:** Connect the trailer patch (101996-WL) 13-way grey connector to the vehicle pre-wire connector.
8. Using an alcohol wipe, clean a suitable area of the LHS inner sheet metal and the underside of the ECU (04839).
9. Connect the trailer patch 22-way connector to the ECU.
10. Apply double sided tape to the ECU and secure it to the vehicle sheet metal.
Note: Mount the ECU, ensuring the connector is orientated downwards.
11. With the rear bumper removed, secure tail harness (Part No: WLT-019) to towbar.
12. Connect the tail harness 8-way connector to the trailer patch mating 8-way connector.
13. Cut-off, crimp and tail harness GREY and GREY/BLACK wires to the trailer patch matching WHITE and GREY/BLACK wires.
14. Apply silicone grease (not supplied) to waterproof connector.
15. Under the vehicle LHS, locate the vehicle trailer harness pre-wire connector.
16. Remove the blanking plug sealing the connector and connect the black and purple connector on the patch harness to the vehicle pre-wire connector.
17. Test the trailer patch function using a light board or multi-meter.
18. Secure all harness using supplied Cable Ties.
19. Re-fit all removed parts and secure all fasteners, ensuring there are no squeaks or rattles.



Wiring Loom Fitting Instructions
To Suit Holden Commodore ZB Wagon
Part Number 101996-WL

20. The RPA function can be disabled via a switch next to the transmission lever.
21. Place the fitting instructions in the glove box after fitment.

Note: Keep harness routing clear of all sharp edges, moving parts and places of extreme heat.



FITTING INSTRUCTIONS

Silent Anti-Rattle Hitch Pin (PR0001)

• These fitting instructions are supplied to ensure understanding of how the HITCH PIN should be fitted and used correctly.

• Once installed, we recommend **ALL** instructions are kept and placed in the vehicle glove box.

NOTE: Routine maintenance and inspection of the towbar & HITCH PIN is required. Regularly inspect for wear and check the tightness of the Hitch Pin. Follow instructions below to retighten the nut when necessary.

***Do not tow with your vehicle if the R CLIP or the HITCH PIN is loose or missing. Replacement parts are available from your Pro Series Distributor.**

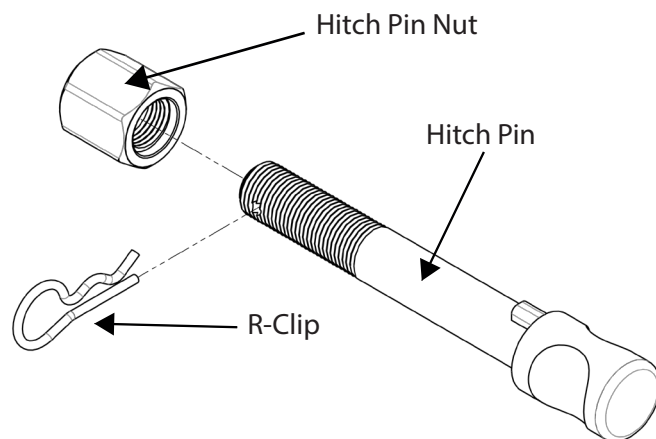


Fig 1. Silent Anti-Rattle Hitch Pin assembly

STEP 1

Insert Trailer Ball Mount (TBM) into towbar HITCHBOX, aligning hole in TBM SHANK with hole in HITCHBOX (Fig 2).

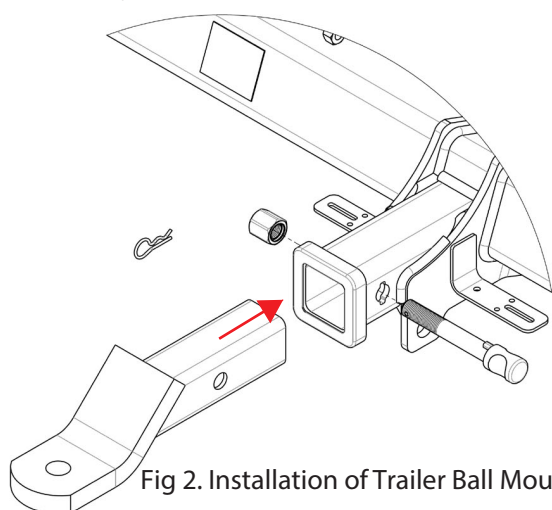


Fig 2. Installation of Trailer Ball Mount

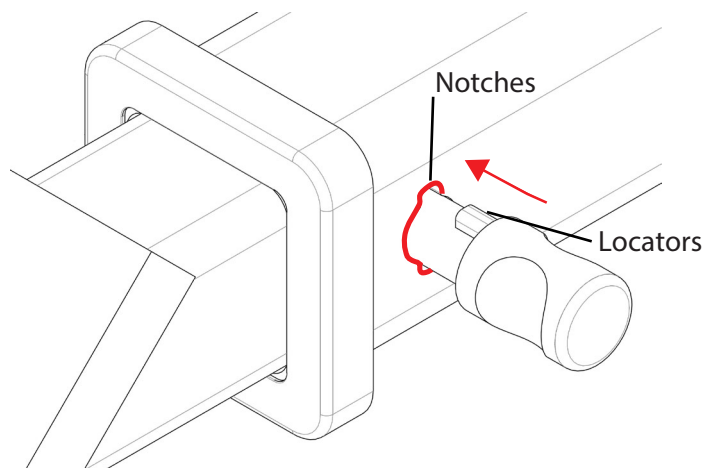


Fig 3. Silent Anti-Rattle Hitch Pin orientation

STEP 2

Insert HITCH PIN through hole in HITCHBOX and hole in TBM SHANK; ensure the LOCATORS are inserted into the NOTCHES in the HITCHBOX (Fig. 3).

STEP 3

Screw HITCH PIN NUT onto HITCH PIN ; tighten HITCH PIN NUT until finger tight, ensuring TBM is restrained from movement.

STEP 4

Tighten HITCH PIN NUT by turning nut a further 1/8th of a turn in the clockwise direction using a 24mm spanner (Fig. 4).

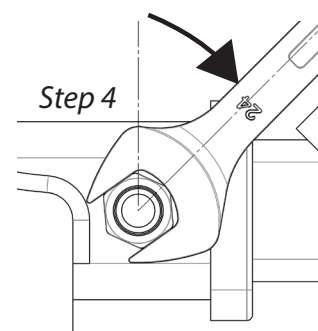


Fig 4. Tightening of Silent Anti-Rattle Hitch Pin Nut

STEP 5

Install HITCH PIN R CLIP through the hole on the HITCH PIN (Fig. 1).