

# TRAILBOSS

## Towbar Fitting Instructions To Suit **HONDA CRV 2013-ON** Part Number **QTHN451L** Rating **1500/100 kg**

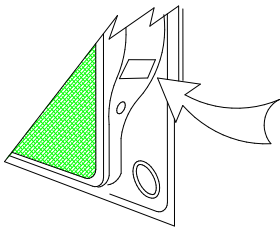
PLACE THESE INSTRUCTIONS IN THE VEHICLE'S GLOVEBOX AFTER INSTALLATION IS COMPLETED

### **WARNING:**

1. Do not, drill, cut, weld or otherwise modify the tow bar.
2. If you are using electric welding on a motor vehicle, **always** check that the vehicle is not equipped with electronic engine or instrument management equipment. Failure to do so could **destroy** any onboard computers. If in doubt, check with the vehicle's manufacturer.
3. The high tensile fasteners supplied with this product were used to achieve the specified rating. If replacement is required ensure that fasteners of the same rating & quality are used. Contact an authorised **Trailboss** dealer if further information is required.

### **General:**

1. Ensure all hardware items have been included refer to assembly diagram.
2. It is recommended that the instructions are read through and completely understood before making any attempt to fit this product.
3. Be wary of any changes to vehicle designs or other accessories that may conflict with the installation of this product.
4. Before drilling ensure that the area is clear of fuel, electrical & other components.
5. All holes drilled into the body panels shall have all burrs & swarf removed then coated with a suitable rust preventative paint.
6. For vehicles that require the bumper to be cut. Ensure cut out area is in correct position on the vehicle prior to cutting the bumper.
7. The high tensile fasteners supplied with this product were used to achieve the specified rating. If replacement is required ensure that fasteners of the same rating & quality are used. Contact an authorized **Trailboss** dealer if further information is required.
8. Ensure that all hardware is fastened to torque list below check fasteners on regular basis.
9. Tow bar load rating sticker provided with this product shall be conspicuously located on inside rear end of the driver's door. **(See diagram below)**.
10. Trailboss recommends that you check your tow ball to ensure that it complies with the Australian standards **AS 4177.2**.
11. **PLEASE NOTE:** It is advised to remove your lug or tbm when not actually towing so as to produce a clear view of the vehicles registration plate if obscured, and to also provide maximum available departure angle
12. Pull Pin must be fit in down position.



Place load rating sticker  
inside driver's door here

**FOR TRAILER TOWING PURPOSES ONLY**  
For towing capacity details please refer to vehicle owner's manual or to the manufacturer. Overloading can void your warranties.

#### **RECOMMENDED ASSEMBLY TORQUE LISTING**

<u>Diameter</u>	<u>Grade 8.8 Bolt</u>
M6	9.5 Nm
M8	21.7 Nm
M10	43.4 Nm
M12	77.3Nm
M14	146 Nm
M16	189.8 Nm

### **Tow bar Maintenance and Care.**

Trailboss recommends that bolt torque's, as listed below, are routinely and regularly inspected and checked for correct tension. Replace any worn or defective parts.

We recommended to remove Tow Ball Mounts (TBM's, tongues or lugs) when not being used for any considerable length of time.

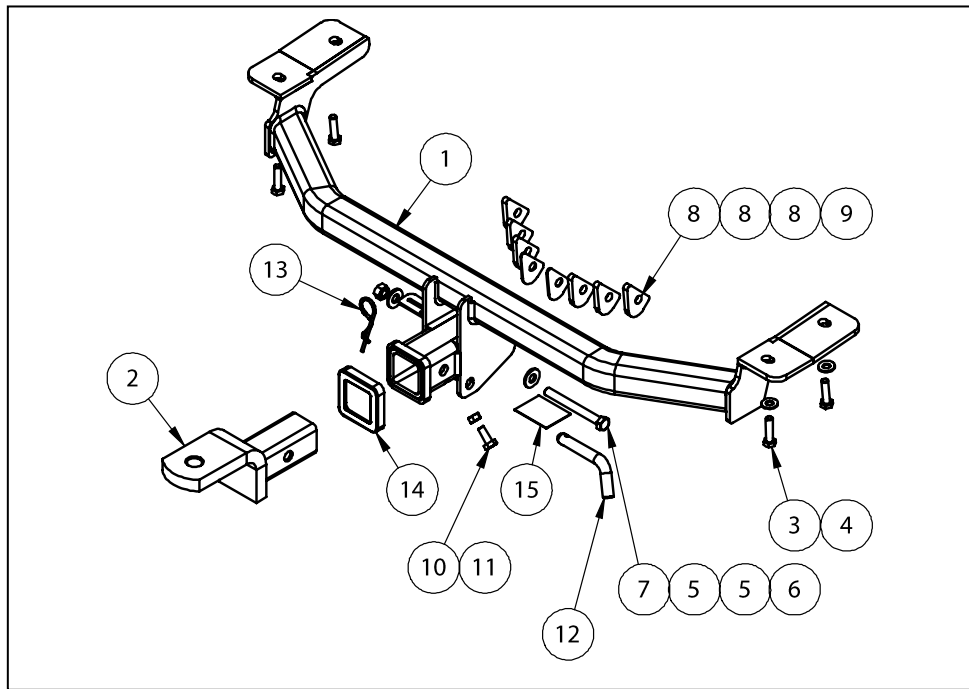
So as to avoid injury, when not towing it is suggested that the tongue, Pull Pin and R-clip are removed then stored in a safe, clean and dry place, away from excessive moisture.

Hitch Pull Pins and spring "R" clips are regularly checked for proper installation. Replace any worn or defective parts.

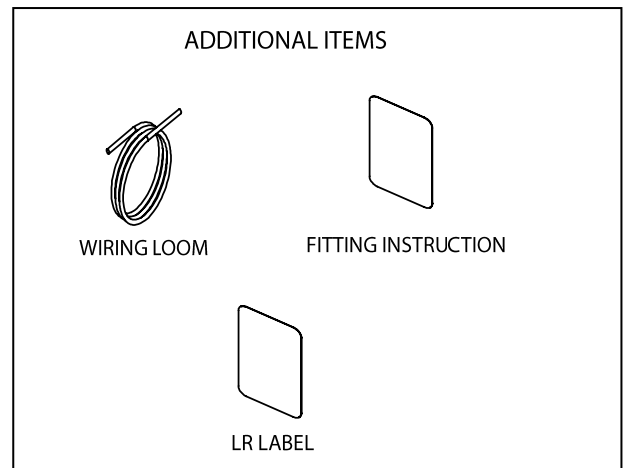
# TRAILBOSS

Towbar Fitting Instructions  
 To Suit **HONDA CRV 2013-ON**  
 Part Number **QTHN451L**  
 Rating **1500/100 kg**

PLACE THESE INSTRUCTIONS IN THE VEHICLE'S GLOVEBOX AFTER INSTALLATION IS COMPLETED



QTY.	DESCRIPTION	ITEM NO.
1	WELDED ASSEMBLY	1
1	T.B.MOUNT	2
4	SET SCREW M10x1.25x40	3
4	WASHER FLAT M10x23x2 Z/P	4
2	WASHER M12x28.8x3	5
1	M12x1.25 HEX NUT	6
1	BOLT M12-1.25x110	7
6	HOOK PLATE	8
2	2mm SPACER TOW HOOK	9
1	BOLT M10-1.50x25	10
1	HEX NUT M10x1.5	11
1	PULL PIN	12
1	R CLIP	13
1	HITCH BOX COLLAR COVER	14
1	COMPLIANCE PLATE-ARCYLIC	15





Towbar Fitting Instructions  
To Suit **HONDA CRV 2013-ON**  
Part Number **QTHN451L**  
Rating **1500/100 kg**

PLACE THESE INSTRUCTIONS IN THE VEHICLE'S GLOVEBOX AFTER INSTALLATION IS COMPLETED

**INSTRUCTION:**

1. Remove 1x Clip and 2 x Screws to remove the Passenger Side Rear Mud Guard.
2. Remove 1x Clip and 3x Screws to remove the Driver Side Rear Mud Guard.
3. Open the rear doors; Remove 2x Screws to pull out the Wheel Arch Protector on both sides.
4. Remove 1x Screw and 1x Clip from Wheel Arch after removing the wheel Arch Protector.
5. Remove 2x Bumper Screws from the Boot Cavity.
6. Remove the cover to expose M6 Bolt in the Boot Cavity and then unbolt it from either side.
7. Remove 3x Clips from underneath the Bumper and the undercover. Flex the Bumper at the sides then pull rearwards to remove, some force may be required. Store the Bumper in a safe Location after removal.
8. Remove the Bumper Cover via 3 x Bolts and Store them in a safe Location after removal.
9. Lower the Exhaust to gain better access by removing the two Muffler Bushings from the Vehicle Pins.
10. Loosely install the Towbar on the vehicle frame; Use 4x M10x40mm Set Screw with M10 Spring Washer and Flat Washer to mount onto Frame; Loosely install 12mm and 2 mm Packer on both side of Tow Hook, and use M12x110 Bolt with M12 Flat Washer and Nut . Torque all fasteners to specification on Page 1.

**NOTE: Quantity of Packers is determined by available clearance on vehicle.**

11. Cut 95mm Wide from the centre line of the Bumper Cover, and align with the horizontal edge of opening for Tow Hook. Neatly cut out, using a saw or similar device, remove all burrs.
12. Refit the bumper in reverse order.



Wiring Loom Fitting Instructions  
To Suit Honda CRV  
Part Number 100886-WL

Wiring Loom Installation Instructions

Honda CRV  
Part No: 100886-WL

Tail Harness Length Required: 1800mm

Wiring Loom Installation Time: Approx 30 Mins

## Wiring Loom Fitting Instructions To Suit Honda CRV Part Number 100886-WL

1. In the luggage compartment, remove the carpet cover.
2. Remove the two plastic clips from the rear luggage compartment trim and remove by pulling in an upwards direction.
3. On the LHS of the luggage compartment, remove the LHS luggage compartment access panel.
4. In the LHS rear passenger door sill area, remove the lower seat trim.

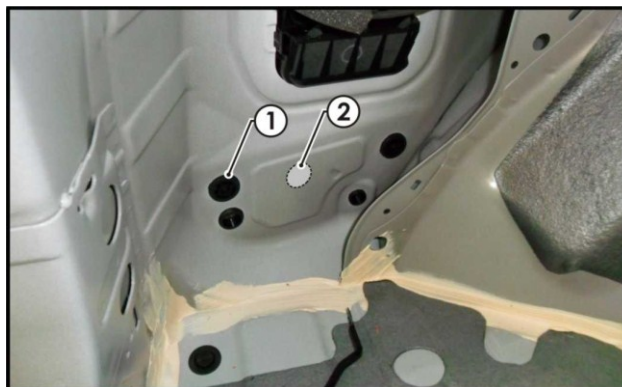
**Repeat steps 3 & 4 for the RHS.**

5. On the LHS of the luggage compartment, remove the two screws behind the luggage compartment lever.
6. Remove the hook by pushing inwards on the circular clip.
7. Remove the storage compartment.
8. Remove the screw underneath the previously removed storage compartment.
9. Remove the LHS luggage compartment trim.

**Repeat steps 5 - 9 for the RHS.**

10. On the LHS rear quarter of the vehicle, remove the existing grommet (1) and drill the hole out to Ø30mm.
11. File any rough or sharp edges and spray on rust inhibitor.

**Note: If the existing grommet is occupied, drill a Ø30mm hole (2) next to it as shown.**

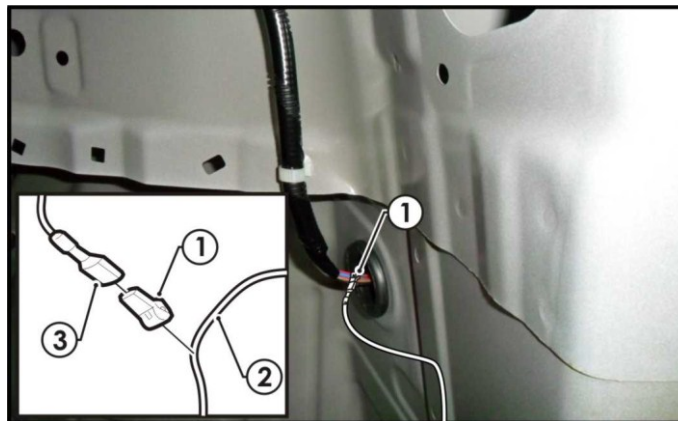


12. Dislodge the upper LHS luggage compartment trim.
13. Disconnect the tail light assembly connectors and connect the trailer patch (P/No:100886-WL) connectors in between.

## Wiring Loom Fitting Instructions To Suit Honda CRV Part Number 100886-WL

**Note: Ensure air bag clips are not damaged when dislodging the upper LHS trim.**

14. Route the trailer patch (P/No:100886-WL) along the rear of the luggage compartment towards the RHS tail light.
15. On the RHS of the luggage compartment, following the table below, connect the ezy-tap (1) to the vehicle 'GREEN' reverse wire (2), then connect the trailer patch terminal (3) to the ezy-tap (1).



Function	Trailer Patch	Vehicle Connector
REVERSE	BLACK	GREEN

16. Mount the trailer socket to the tow bar mounting bracket using M4 fasteners (not supplied).
17. Route the tail harness (tail length 1800mm) across the tow bar towards the LHS of the vehicle and up through the previously drilled out hole.
18. Ensure the tail harness grommet is seated correctly and secure in place using a cable tie (not supplied).
19. Connect the tail harness (tail length 1800mm) 8-way connector to the trailer patch mating 8-way connector.
20. Test the trailer wiring harness function using a light board or multi meter.
21. Secure all harnesses using cable ties (not supplied).
22. Re-fit all removed parts and secure all fasteners, ensuring there are no squeaks or rattles.
23. Place the fitting instructions in the glove box after fitment.