

TRAILBOSS

Towbar Fitting Instructions To Suit **HONDA HR-V** Part Number **QTHN452L** Rating **800/70 kg**

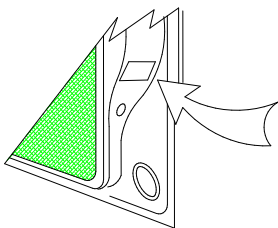
PLACE THESE INSTRUCTIONS IN THE VEHICLE'S GLOVEBOX AFTER INSTALLATION IS COMPLETED

WARNING:

1. Do not, drill, cut, weld or otherwise modify the tow bar.
2. If you are using electric welding on a motor vehicle, **always** check that the vehicle is not equipped with electronic engine or instrument management equipment. Failure to do so could **destroy** any onboard computers. If in doubt, check with the vehicle's manufacturer.
3. The high tensile fasteners supplied with this product were used to achieve the specified rating. If replacement is required ensure that fasteners of the same rating & quality are used. Contact an authorised **Trailboss** dealer if further information is required.
4. If TBM is used in inverted position tow ball may make contact with rear tailgate when lowered, which could cause damage.

General:

1. Ensure all hardware items have been included refer to assembly diagram.
2. It is recommended that the instructions are read through and completely understood before making any attempt to fit this product.
3. Be wary of any changes to vehicle designs or other accessories that may conflict with the installation of this product.
4. Before drilling ensure that the area is clear of fuel, electrical & other components.
5. All holes drilled into the body panels shall have all burrs & swarf removed then coated with a suitable rust preventative paint.
6. For vehicles that require the bumper to be cut. Ensure cut out area is in correct position on the vehicle prior to cutting the bumper.
7. The high tensile fasteners supplied with this product were used to achieve the specified rating. If replacement is required ensure that fasteners of the same rating & quality are used. Contact an authorized **Trailboss** dealer if further information is required.
8. Ensure that all hardware is fastened to torque list below check fasteners on regular basis.
9. Tow bar load rating sticker provided with this product shall be conspicuously located on inside rear end of the driver's door. **(See diagram below).**
10. Trailboss recommends that you check your tow ball to ensure that it complies with the Australian standards **AS 4177.2**.
11. **PLEASE NOTE:** It is advised to remove your lug or tbn when not actually towing so as to produce a clear view of the vehicles registration plate if obscured, and to also provide maximum available departure angle
12. Pull Pin must be fit in down position.



Place load rating sticker
inside driver's door here

FOR TRAILER TOWING PURPOSES ONLY
For towing capacity details please refer to vehicle owner's manual or to the manufacturer. Overloading can void your warranties.

RECOMMENDED ASSEMBLY TORQUE LISTING

Diameter

M6	9.5 Nm
M8	21.7 Nm
M10	43.4 Nm
M12	125Nm
M14	146 Nm
M16	189.8 Nm

Tow bar Maintenance and Care.

Trailboss recommends that bolt torque's, as listed below, are routinely and regularly inspected and checked for correct tension. Replace any worn or defective parts.

We recommended to remove Tow Ball Mounts (TBM's, tongues or lugs) when not being used for any considerable length of time.

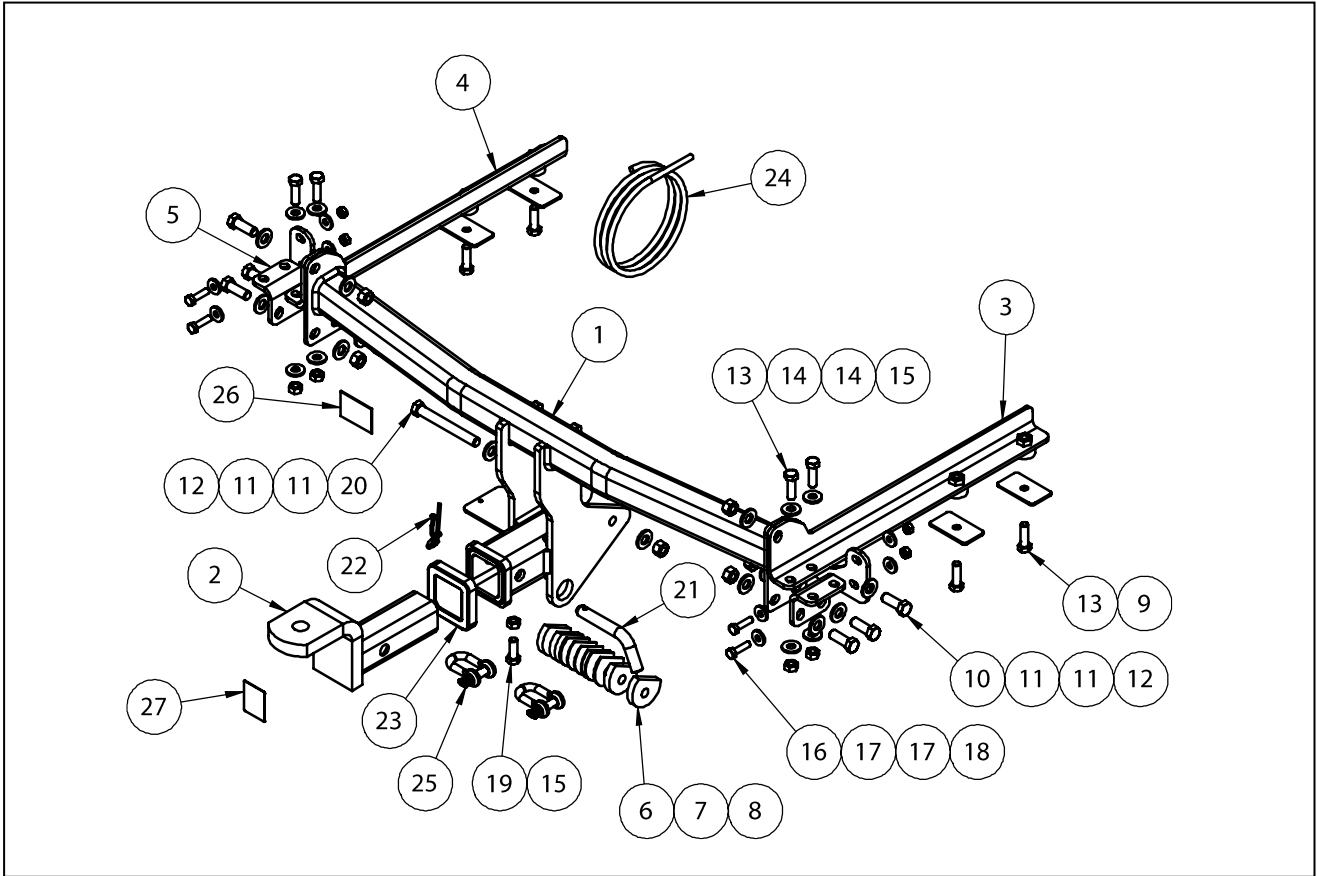
So as to avoid injury, when not towing it is suggested that the tongue, Pull Pin and R-clip are removed then stored in a safe, clean and dry place, away from excessive moisture.

Hitch Pull Pins and spring "R" clips are regularly checked for proper installation. Replace any worn or defective parts.

TRAILBOSS

Towbar Fitting Instructions
 To Suit **HONDA HR-V**
 Part Number **QTHN452L**
 Rating **800/70 kg**

PLACE THESE INSTRUCTIONS IN THE VEHICLE'S GLOVEBOX AFTER INSTALLATION IS COMPLETED



QTY.	DESCRIPTION	ITEM NO.	QTY.	DESCRIPTION	ITEM NO.
1	WELDED ASSEMBLY	1	5	HEX NUT M10x1.5	15
1	TBM ASSEMBLY	2	4	BOLT M8-1.25x30mm	16
1	SIDE ARM RHS	3	8	FLAT WASHER M8x22x3.3mm	17
1	SIDE ARM LHS	4	4	NUT M8- 1.25	18
2	SIDE ARM BENT BRACKET	5	1	SET SCREW HEX M10x30x1.5P	19
4	LARGE SPACER	6	1	BOLT M12x110	20
2	MID SPACER	7	1	PULL PIN	21
4	SMALL SPACER	8	1	SPRING COTTER PIN ASSY	22
4	WASHER PLATE	9	1	HITCH BOX COLLAR COVER	23
6	SET SCREW M12x35 1.75P	10	1	WIRING LOOM	24
14	WASHER FLAT 1/2"x1 1/8"x1/8"	11	2	D' SHACKLE	25
7	HEX NUT M12x1.75 PC8	12	1	ACRYLIC CP	26
8	SET SCREW M10-1.5x35mm	13			
8	WASHER FT M10x25.4x3	14			

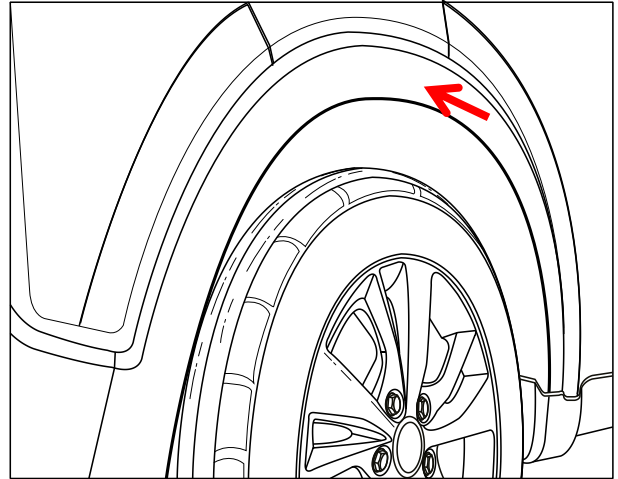
TRAILBOSS

Towbar Fitting Instructions
To Suit **HONDA HR-V**
Part Number **QTHN452L**
Rating **800/70 kg**

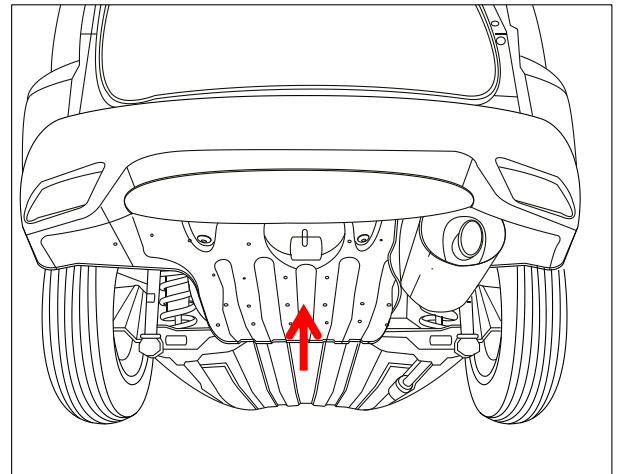
PLACE THESE INSTRUCTIONS IN THE VEHICLE'S GLOVEBOX AFTER INSTALLATION IS COMPLETED

1. Remove all Screws located in Wheel Arc that are retaining the Wheel Arc Plastic trim, then unclip the wheel arc plastic trim from vehicle and remove a Screw that is present under the trim which retains the bumper to the vehicle.

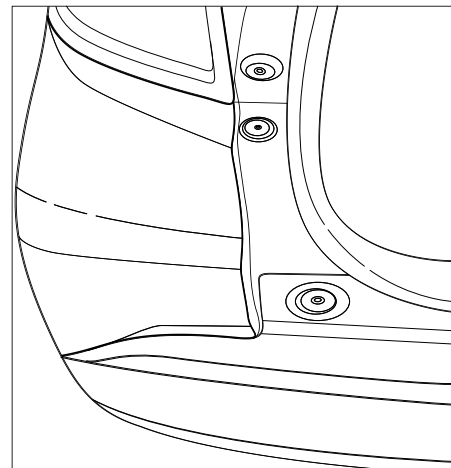
Do this for both LH & RH sides.



2. Remove all Fasteners retaining the plastic under cover and place plastic under cover to the side.



3. Remove all Screws retaining bumper to vehicle located under the rear door.

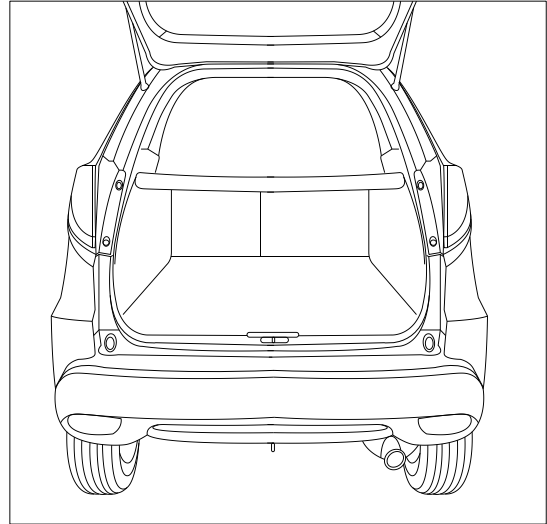


TRAILBOSS

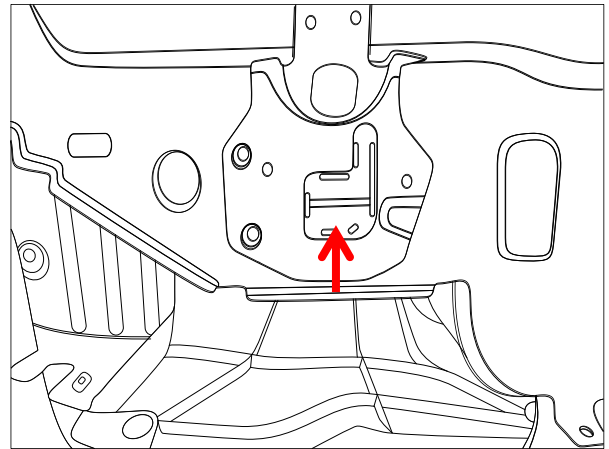
Towbar Fitting Instructions
To Suit **HONDA HR-V**
Part Number **QTHN452L**
Rating **800/70 kg**

PLACE THESE INSTRUCTIONS IN THE VEHICLE'S GLOVEBOX AFTER INSTALLATION IS COMPLETED

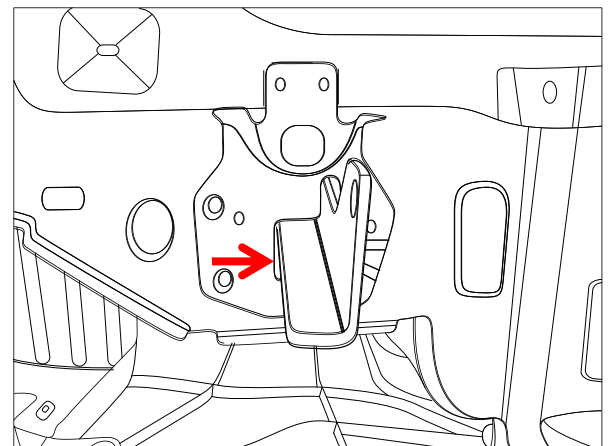
4. Firmly pull on bumper to release the clips retaining it to the vehicle, and place bumper to the side.



5. Cut back panel to open up chassis rail, using the existing cuts as guide for both LH & RH sides.



6. Insert side arm into chassis rail and loosely fasten Bolts and Washer Plate for both LH & RH sides, then offer Towbar centre section to vehicle and also loosely fasten.



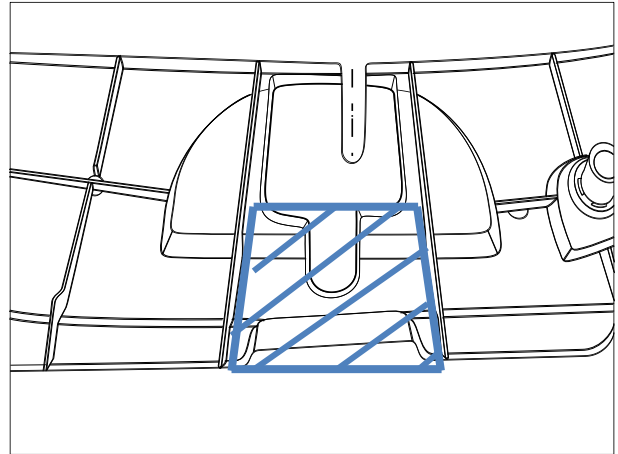
TRAILBOSS

Towbar Fitting Instructions
To Suit **HONDA HR-V**
Part Number **QTHN452L**
Rating **800/70 kg**

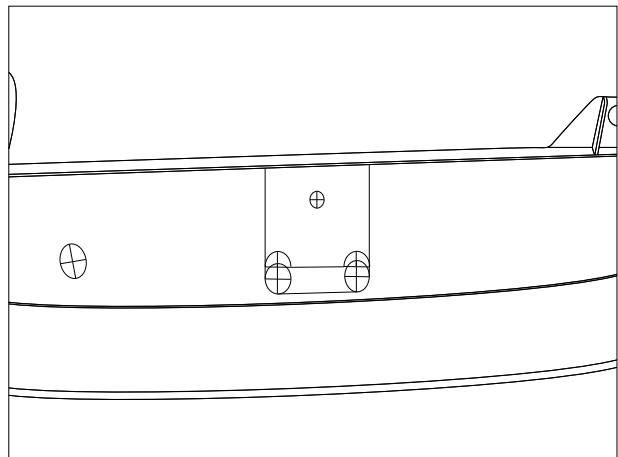
PLACE THESE INSTRUCTIONS IN THE VEHICLE'S GLOVEBOX AFTER INSTALLATION IS COMPLETED

7. Attach Towbar centre section to the factory shipping hook using the supplied shim plates as need to fill the gaps either side and then tighten all bolts to the torque specification provide for each size Bolt on page 2.

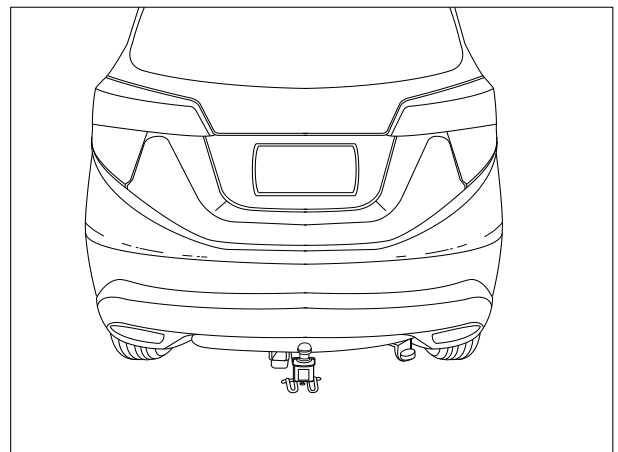
Plastic under cover requires a cut use the plastic ribs and edge of existing shipping hook cut out as guide as seen in image.



8. Create a Bumper cut using the existing Bumper cut template located in the inside of the Bumper to determine the centre of the bumper, make cut out approximately 110mm wide and 80mm high.



9. Refit all components back onto vehicle in reverse order to disassembly.





Wiring Loom Fitting Instructions
To Suit Honda HR-V
Part Number 101288-WL

Wiring Loom Installation Instructions

Honda HR-V
Part No: 101288-WL

Tail Harness Length Required: 1800mm

Wiring Loom Installation Time: Approx 30 Mins

Wiring Loom Fitting Instructions To Suit Honda HR-V Part Number 101288-WL

Important



Due to possible vehicle variations, always confirm any noted vehicle colour wires with a multi-meter to ensure the correct function is identified before soldering or scotch locking.

1. In the luggage compartment, fold down the rear seats.
2. Remove the floor cover carpet by removing the two screws.
3. Remove the luggage compartment rear trim.
4. In the luggage compartment RHS rear quarter area, find a suitable location on the sheet metal floor near the vent and drill out a Ø30mm hole (1). Apply rust inhibitor after drilling.



5. Disconnect the vehicle RHS tail light connectors and patch the trailer patch (P/No: 101288-WL) RHS branch connectors in between.
6. Following the table below, connect the ezy-tap to the corresponding vehicle wire, then connect the trailer patch terminal to the ezy-tap. Due to vehicle variations, ensure to use a multi-meter to determine the correct signals.
7. Secure the trailer patch ground ring terminal to the vehicle grounding point.

Function	Trailer Patch	Vehicle Wire
REVERSE	BLACK	BROWN

8. Secure the trailer patch ground ring terminal to the vehicle grounding point.
9. Route the trailer patch harness across the rear of the vehicle towards the LHS.
10. Disconnect the vehicle LHS tail light connector and patch the trailer patch LHS branch connectors in between.



Wiring Loom Fitting Instructions
To Suit Honda HR-V
Part Number 101288-WL

11. At the rear exterior of the vehicle, mount the tail harness socket to the towbar mounting bracket using M4 fasteners (not supplied).
12. Route the tail harness (tail length: 1800mm) across the RHS and up into the drilled out grommet hole. Adjust the trailer patch harness grommet so that it is seated correctly and cable tie (not supplied) in place.
13. Inside the luggage compartment, connect the tail harness 8-way connector to the trailer patch 8-way mating connector.
14. Test the Trailer Harness function using a light board or multimeter.
15. Secure all harnesses using cable ties (not supplied).
16. Re-fit removed parts and secure all fasteners, ensuring there are no squeaks or rattles.
17. Place the instructions in the glove box after fitment.



FITTING INSTRUCTIONS

Silent Anti-Rattle Hitch Pin (PR0001)

• These fitting instructions are supplied to ensure understanding of how the HITCH PIN should be fitted and used correctly.

• Once installed, we recommend **ALL** instructions are kept and placed in the vehicle glove box.

NOTE: Routine maintenance and inspection of the towbar & HITCH PIN is required. Regularly inspect for wear and check the tightness of the Hitch Pin. Follow instructions below to retighten the nut when necessary.

***Do not tow with your vehicle if the R CLIP or the HITCH PIN is loose or missing. Replacement parts are available from your Pro Series Distributor.**

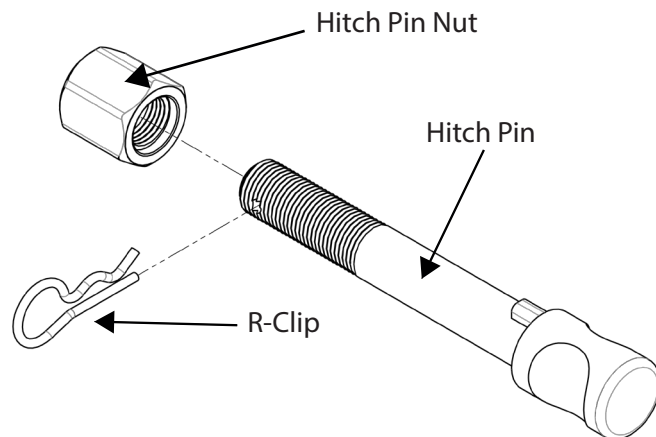


Fig 1. Silent Anti-Rattle Hitch Pin assembly

STEP 1

Insert Trailer Ball Mount (TBM) into towbar HITCHBOX, aligning hole in TBM SHANK with hole in HITCHBOX (Fig 2).

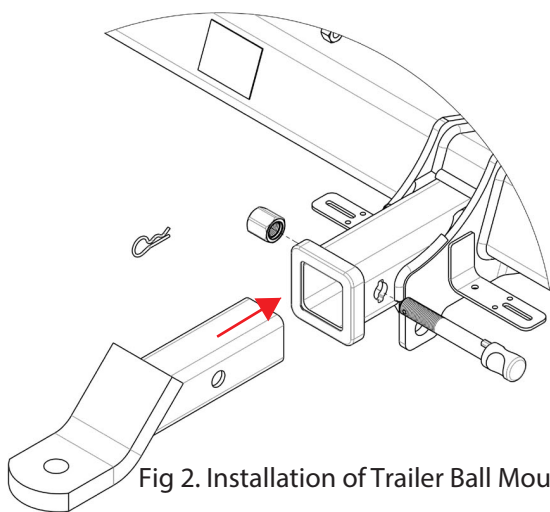


Fig 2. Installation of Trailer Ball Mount

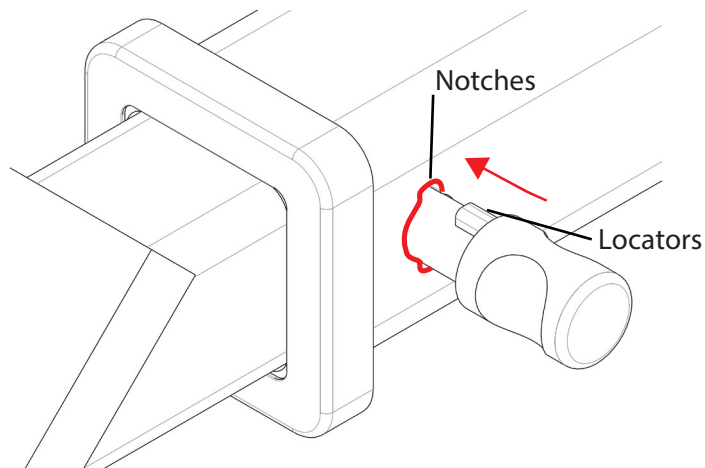


Fig 3. Silent Anti-Rattle Hitch Pin orientation

STEP 2

Insert HITCH PIN through hole in HITCHBOX and hole in TBM SHANK; ensure the LOCATORS are inserted into the NOTCHES in the HITCHBOX (Fig. 3).

STEP 3

Screw HITCH PIN NUT onto HITCH PIN ; tighten HITCH PIN NUT until finger tight, ensuring TBM is restrained from movement.

STEP 4

Tighten HITCH PIN NUT by turning nut a further 1/8th of a turn in the clockwise direction using a 24mm spanner (Fig. 4).

STEP 5

Install HITCH PIN R CLIP through the hole on the HITCH PIN (Fig. 1).

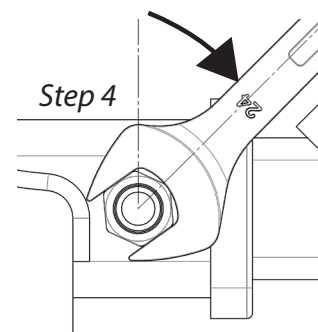


Fig 4. Tightening of Silent Anti-Rattle Hitch Pin Nut