

TRAILBOSS

Towbar Fitting Instructions To Suit **HONDA CR-V RW CL4** Part Number **QTHN454L** Rating **1500/100 kg**

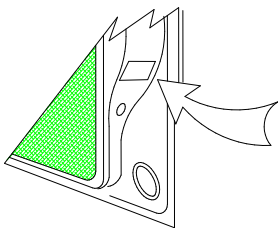
PLACE THESE INSTRUCTIONS IN THE VEHICLE'S GLOVEBOX AFTER INSTALLATION IS COMPLETED

WARNING:

1. Do not, drill, cut, weld or otherwise modify the tow bar.
2. If you are using electric welding on a motor vehicle, **always** check that the vehicle is not equipped with electronic engine or instrument management equipment. Failure to do so could **destroy** any onboard computers. If in doubt, check with the vehicle's manufacturer.
3. The high tensile fasteners supplied with this product were used to achieve the specified rating. If replacement is required ensure that fasteners of the same rating & quality are used. Contact an authorised **Trailboss** dealer if further information is required.
4. If TBM is used in inverted position tow ball may make contact with rear tailgate when lowered, which could cause damage.

General:

1. Ensure all hardware items have been included refer to assembly diagram.
2. It is recommended that the instructions are read through and completely understood before making any attempt to fit this product.
3. Be wary of any changes to vehicle designs or other accessories that may conflict with the installation of this product.
4. Before drilling ensure that the area is clear of fuel, electrical & other components.
5. All holes drilled into the body panels shall have all burrs & swarf removed then coated with a suitable rust preventative paint.
6. For vehicles that require the bumper to be cut. Ensure cut out area is in correct position on the vehicle prior to cutting the bumper.
7. The high tensile fasteners supplied with this product were used to achieve the specified rating. If replacement is required ensure that fasteners of the same rating & quality are used. Contact an authorized **Trailboss** dealer if further information is required.
8. Ensure that all hardware is fastened to torque list below check fasteners on regular basis.
9. Tow bar load rating sticker provided with this product shall be conspicuously located on inside rear end of the driver's door. **(See diagram below).**
10. Trailboss recommends that you check your tow ball to ensure that it complies with the Australian standards **AS 4177.2**.
11. **PLEASE NOTE:** It is advised to remove your LUG or TBM when not actually towing so as to produce a clear view of the vehicles registration plate if obscured, and to also provide maximum available departure angle



Place load rating sticker
inside driver's door here

FOR TRAILER TOWING PURPOSES ONLY
For towing capacity details please refer to vehicle owner's manual or to the manufacturer. Overloading can void your warranties.

RECOMMENDED ASSEMBLY TORQUE LISTING

Diameter	Grade 8.8 Bolt
M6	9.5 Nm
M8	21.7 Nm
M10	43.4 Nm
M12	77.3Nm
M14	146 Nm
M16	189.8 Nm

Tow bar Maintenance and Care.

Trailboss recommends that bolt torque's, as listed below, are routinely and regularly inspected and checked for correct tension. Replace any worn or defective parts.

We recommended to remove Tow Ball Mounts (TBM's, tongues or lugs) when not being used for any considerable length of time.

So as to avoid injury, when not towing it is suggested that the tongue, Pull Pin and R-clip are removed then stored in a safe, clean and dry place, away from excessive moisture.

Hitch Pull Pins and spring "R" clips are regularly checked for proper installation. Replace any worn or defective parts.

Cequent Customer Service

Ph: 1800 812 017 Fax: 03 9898 3299

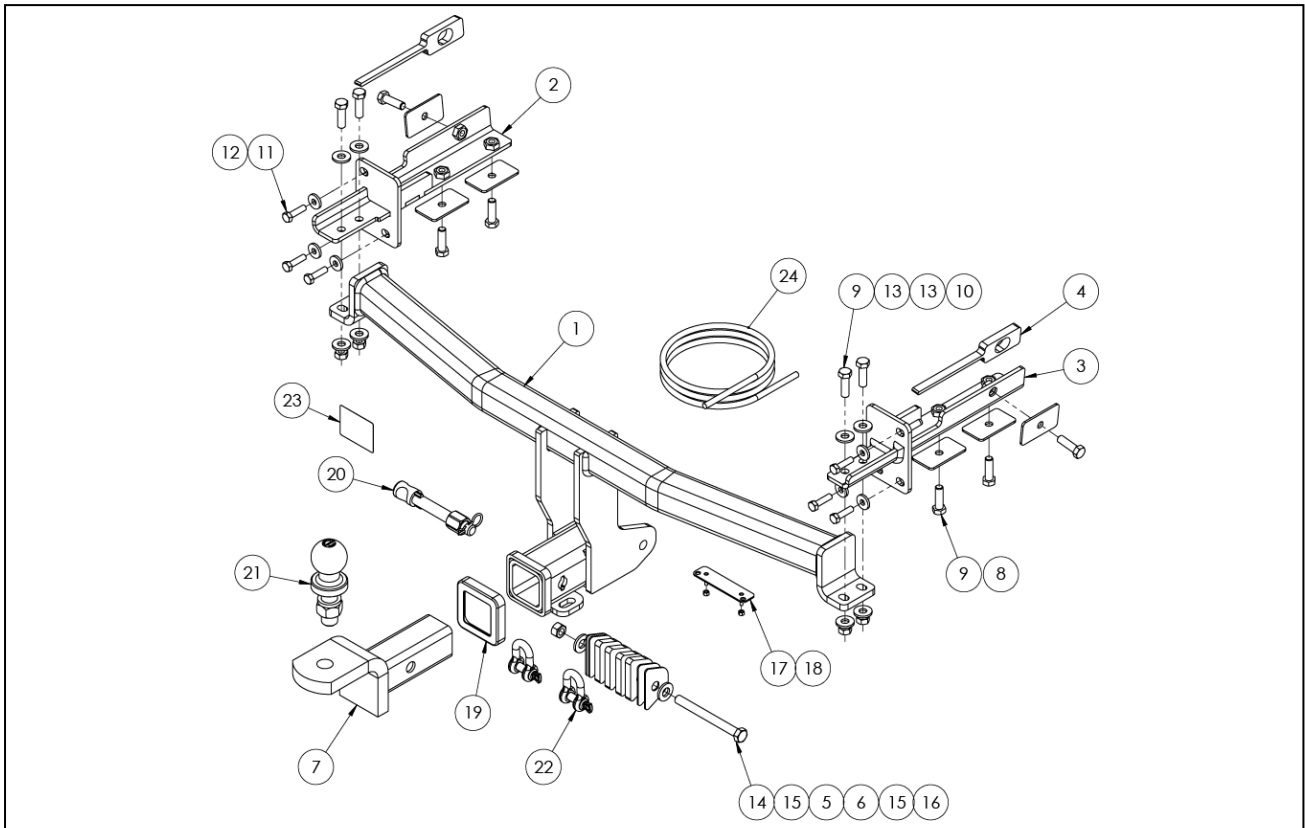
Email: info@cequent.com.au

Post: PO Box 4050, Dandenong South VIC 3175

TRAILBOSS

Towbar Fitting Instructions
 To Suit **HONDA CR-V RW CL4**
 Part Number **QTHN454L**
 Rating **1500/100 kg**

PLACE THESE INSTRUCTIONS IN THE VEHICLE'S GLOVEBOX AFTER INSTALLATION IS COMPLETED



ITEM	DESCRIPTION	QTY	ITEM	DESCRIPTION	QTY
1	HONDA CRV WELDED ASSEMBLY	1	15	WASHER PLAIN 1/2X1-1/8X16G	2
2	SIDE ARM LHS	1	16	NUT HEX HD M12 X 1.25P G8	1
3	SIDE ARM RHS	1	17	VE PLUG BRACKET	1
4	SIDE ARM SPACER	2	18	NUT NYLON LOCK HEX HD M4X0.7P G8	2
5	TOW HOOK SPACER THICK	4	19	HITCH BOX COLLAR COVER	1
6	TOW HOOK SPACER THIN	4	20	SILENT HITCH PIN – SILVER	1
7	TRAILER BALL MOUNT	1	21	50MM TOWBALL	1
8	WASHER PLATE	6	22	10MM “D” SHACKLE	2
9	SETSCREW HXHD M10X35X1.5PG8.8	10	23	ACRYLIC COMPLIANCE LABEL	1
10	NUT HEX HD M10X1.5P G8	4	24	WIRING LOOM	1
11	SETSCREW HEX HD M8X30X1.25P G8.8	6			
12	WASHER PLAIN M8 X 22 X 3	6			
13	WASHER PLAIN M10 X 25 X 3	8			
14	BOLT HEX HD M12 X 120 X 1.25P G8.8	1			

Cequent Customer Service
 Ph: 1800 812 017 Fax: 03 9898 3299
 Email: info@cequent.com.au
 Post: PO Box 4050, Dandenong South VIC 3175

TRAILBOSS

Towbar Fitting Instructions
To Suit **HONDA CR-V RW CL4**
Part Number **QTHN454L**
Rating **1500/100 kg**

PLACE THESE INSTRUCTIONS IN THE VEHICLE'S GLOVEBOX AFTER INSTALLATION IS COMPLETED

1. On the LHS of the bumper, remove 2 x torx head screws from perimeter of boot opening.

Repeat for RHS.



2. On the LHS of vehicle, remove 2 x screws from inside wheel arch on mudflap and 1 x scrivet from underside of mudflap. Remove mudflap and set aside.

Repeat for RHS.



3. On the LHS wheel arch, remove 1 x Phillips head screw located behind mudflap (now removed).

Repeat for RHS.



Cequent Customer Service
Ph: 1800 812 017 Fax: 03 9898 3299
Email: info@cequent.com.au
Post: PO Box 4050, Dandenong South VIC 3175

TRAILBOSS

Towbar Fitting Instructions
To Suit **HONDA CR-V RW CL4**
Part Number **QTHN454L**
Rating **1500/100 kg**

PLACE THESE INSTRUCTIONS IN THE VEHICLE'S GLOVEBOX AFTER INSTALLATION IS COMPLETED

4. On the underside of the bumper, remove 2 x screws and 2 x scrivets.



5. On the LHS of vehicle, carefully unclip and remove wheel arch trim from vehicle.

Remove 1 x screw and 1 x scrivet from behind wheel arch cover (now removed).

Repeat for RHS.



6. Carefully peel back bumper from corners and remove, ensuring to disconnect any attached wiring.

Set bumper aside.

Cequent Customer Service
Ph: 1800 812 017 Fax: 03 9898 3299
Email: info@cequent.com.au
Post: PO Box 4050, Dandenong South VIC 3175

TRAILBOSS

Towbar Fitting Instructions
To Suit **HONDA CR-V RW CL4**
Part Number **QTHN454L**
Rating **1500/100 kg**

PLACE THESE INSTRUCTIONS IN THE VEHICLE'S GLOVEBOX AFTER INSTALLATION IS COMPLETED

7. Remove impact beam via 3 x hex head bolts per side. Discard impact beam and bolts.



8. Remove cover underneath vehicle via 2 x flange nuts and 2 x scrivenets.

Set aside for later.



9. Lower exhaust on both sides of vehicle (if equipped) by removing from exhaust mounts.

Support exhaust once lowered.



Cequent Customer Service
Ph: 1800 812 017 Fax: 03 9898 3299
Email: info@cequent.com.au
Post: PO Box 4050, Dandenong South VIC 3175

TRAILBOSS

Towbar Fitting Instructions
To Suit **HONDA CR-V RW CL4**
Part Number **QTHN454L**
Rating **1500/100 kg**

PLACE THESE INSTRUCTIONS IN THE VEHICLE'S GLOVEBOX AFTER INSTALLATION IS COMPLETED

10. Using the 5 x location marks shown on the rear panel chassis opening, drill 5 x 14mm holes to remove metal sheeting.

Once cut, clean any burrs or sharp edges using a file.



11. Insert spacer plate into LHS chassis rail opening (now cut) along the LH face of chassis.

Hold spacer in place by partially pushing M10 x 35mm bolt complete with 1 x M10 washer plate from outside chassis rail into chassis.



12. Insert LH side arm (refer to exploded view) into chassis rail. Align nut on the sidearm with the spacer plate previously inserted (Step 11) and loosely secure with the M10 bolt partially inserted.

Repeat steps 11 and 12 for RHS.



Cequent Customer Service
Ph: 1800 812 017 Fax: 03 9898 3299
Email: info@cequent.com.au
Post: PO Box 4050, Dandenong South VIC 3175

TRAILBOSS

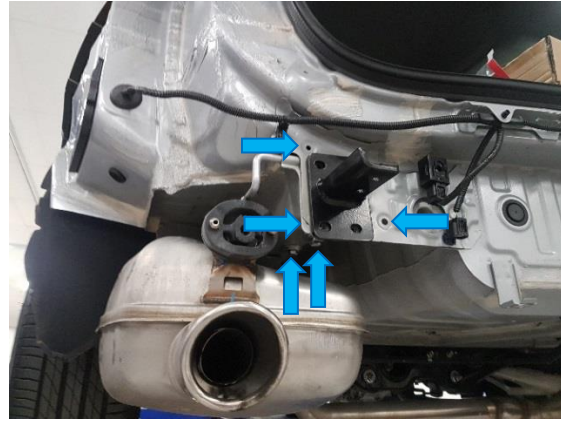
Towbar Fitting Instructions To Suit **HONDA CR-V RW CL4** Part Number **QTHN454L** Rating **1500/100 kg**

PLACE THESE INSTRUCTIONS IN THE VEHICLE'S GLOVEBOX AFTER INSTALLATION IS COMPLETED

13. On LH side arm, loosely secure with 3 x M8 bolts complete with 1 x M8 washer per bolt to the rear panel.

Additionally, loosely secure LH side arm to underside of chassis rail via 2 x M10 x 35mm bolts complete with 1 x M10 washer plate per bolt.

Repeat for RHS.



14. Lift towbar up to side arms and loosely secure the LHS with 2 x M10 x 35mm bolts complete with 2 x M10 washers and 1 x M10 nut per bolt.

Repeat for RHS.



15. Secure towbar to centre recovery hook via 1 x M12 bolt complete with 2 x M12 washers and 1 x M12 nut. Insert spacer plates provided onto bolt between tow hook and dropper until a tight fitting is achieved.

NOTE: Not all spacer plates may be used.

Tighten all fasteners to the torques listed below:

M8 x 1.25 x G8.8: **22 N.m**

M10 x 1.5 x G8.8: **44 N.m**

M12 x 1.25 x G8.8: **89 N.m**



Cequent Customer Service

Ph: 1800 812 017 Fax: 03 9898 3299

Email: info@cequent.com.au

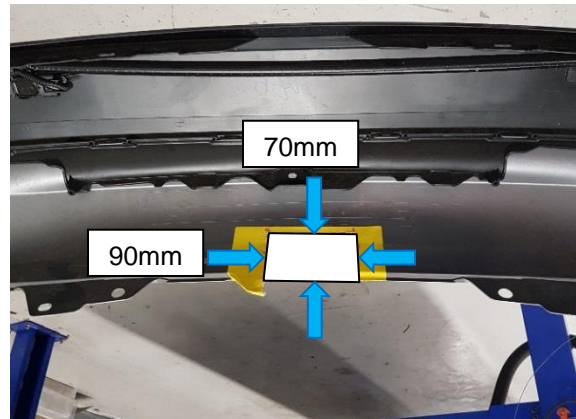
Post: PO Box 4050, Dandenong South VIC 3175

Towbar Fitting Instructions
To Suit **HONDA CR-V RW CL4**
Part Number **QTHN454L**
Rating **1500/100 kg**

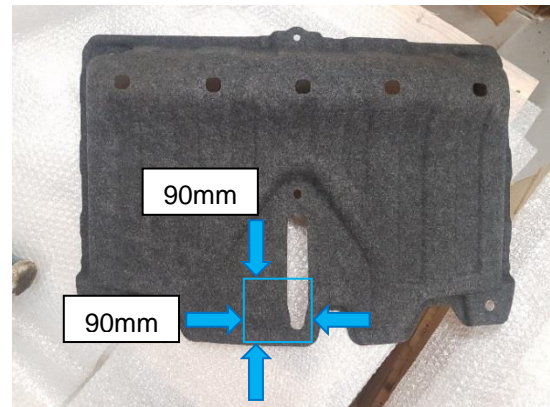
PLACE THESE INSTRUCTIONS IN THE VEHICLE'S GLOVEBOX AFTER INSTALLATION IS COMPLETED

16. Identify the centreline of the inside of the bumper. Mark and cut a 90mm wide by 70mm long rectangle, as measured from the bottom edge of the bumper.

Remove any burrs after cut.

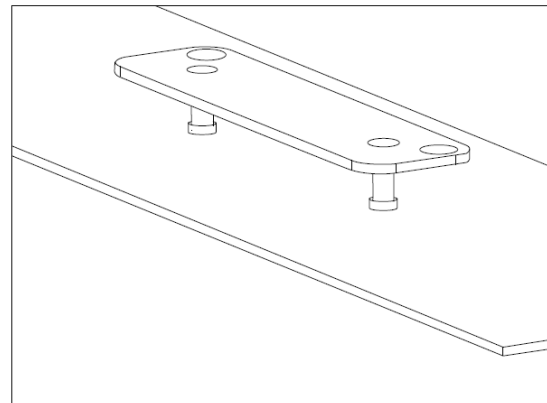


17. On the cover removed in Step 8, identify the slot allocated for the factory tow hook. Mark and cut a 90mm wide by 90mm long square, as measured from the bottom edge of the cover near the slot.



18. Mark out and drill 2 x $\varnothing 5$ mm holes 69mm apart on bumper skin to support plug bracket.

19. Reinstall bumper and components following Steps 1– 8 in reverse (excluding Step 7).



Cequent Customer Service
Ph: 1800 812 017 Fax: 03 9898 3299
Email: info@cequent.com.au
Post: PO Box 4050, Dandenong South VIC 3175



Wiring Loom Fitting Instructions
To Suit Honda CR-V
Part Number 101866-WL

Wiring Loom Installation Instructions

**Honda CR-V
Part No: 101866-WL**

**Tail Harness Length Required: 400mm
RPA Override Switch Part No: 04836 (If Fitted)**

Wiring Loom Installation Time: Approx 90 Mins



Wiring Loom Fitting Instructions
To Suit Honda CR-V
Part Number 101866-WL

1. Disconnect the negative battery terminal.
2. Pull the lever and fold down the rear passenger seats.
3. Remove the two cargo hooks.
4. Remove the luggage compartment front carpet trim.
5. Remove the floor carpet cover.

Note: For 7 seat variant, remove the 3rd row seats.

6. Remove the plastic trim from behind rear seats.
7. Remove the spare wheel and the jack.
8. Pull away the weatherstrip, and remove the luggage compartment rear trim.
9. Remove lower trim along RHS interior.
10. Dislodge the bottom of the RHS 'B' Pillar.
11. Remove lower Dash Trim.
12. Dislodge the RHS cargo trim.
13. Remove the RHS upper cargo trim.
14. Fold carpet back to access vehicle grommet.
15. Remove the RHS tail lamp.

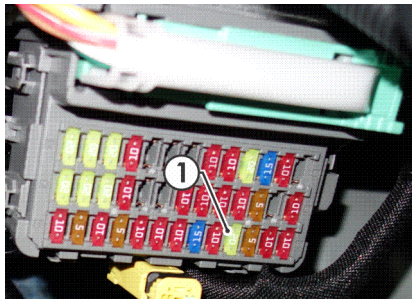
Repeat for LHS.

16. Remove the vehicle blanking grommet.
17. Feed the trailer wiring harness from inside to outside the vehicle, starting with the blue connector.
18. From outside the vehicle, ensure the trailer wiring harness grommet is seated correctly.
19. Route the longer T-Patch along the bottom and up the LHS tail lamp.
20. Connect the tail lamp connector to the trailer wiring mating connector.
21. Repeat for RHS with the shorter T-Patch lead.
22. In the cargo interior, route the Trailer Harness up and across to the exposed cavity on the RHS.
23. Connect the trailer harness to the ECU (04836) and mount in the location shown.

Wiring Loom Fitting Instructions To Suit Honda CR-V Part Number 101866-WL

Note: Ensure ECU connector is facing down.

24. Connect the trailer wiring ground ring terminal to the vehicle grounding point.
25. Continue routing the trailer harness toward the front of the vehicle.
26. Route the Trailer Wiring Harness along the lower RHS interior of the vehicle, following existing wiring where possible.
27. Under the vehicle dash, locate the 22-way green connector above the fuse panel.
28. Disconnect it and connect the vehicle T-Patch in between.
29. Remove the indicated 20A fuse (1) and discard.



30. Insert the two supplied fuses into the Add-A-Fuse Adapter.
31. Insert the Add-A-Fuse Adapter into the previously removed fuse location.

Note: Ensure lead is pointing down.

32. Connect the trailer wiring harness to the Add-A-Fuse.
33. At the rear of the vehicle, secure the 7-pin Socket from the tail (400mm) to the towbar.
34. Route the tail harness up and across to the mating blue connector on the trailer wiring harness.
35. Connect the tail harness 8-way connector to the trailer patch 8-way mating connector.
36. Apply silicone grease to waterproof the connector.
37. Test the trailer wiring harness function using a light board or multi-meter. Secure all harnesses using cable ties (not supplied).
38. Re-fit all removed parts and secure all fasteners, ensuring there are no squeaks or rattles.
39. Place the fitting instructions in the glove box after fitment.



FITTING INSTRUCTIONS

Silent Anti-Rattle Hitch Pin (PR0001)

• These fitting instructions are supplied to ensure understanding of how the HITCH PIN should be fitted and used correctly.

• Once installed, we recommend **ALL** instructions are kept and placed in the vehicle glove box.

NOTE: Routine maintenance and inspection of the towbar & HITCH PIN is required. Regularly inspect for wear and check the tightness of the Hitch Pin. Follow instructions below to retighten the nut when necessary.

***Do not tow with your vehicle if the R CLIP or the HITCH PIN is loose or missing. Replacement parts are available from your Pro Series Distributor.**

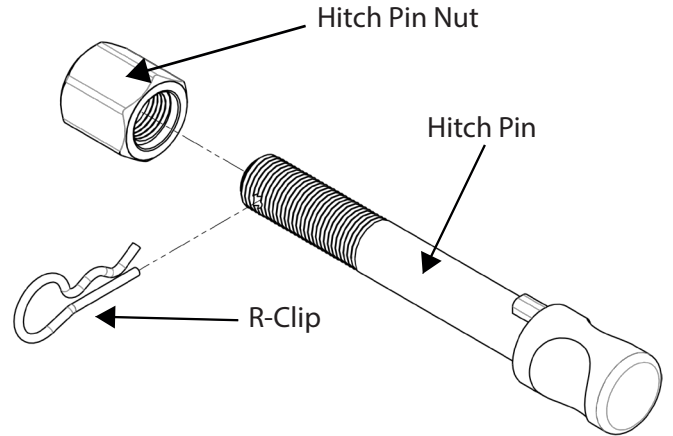


Fig 1. Silent Anti-Rattle Hitch Pin assembly

STEP 1

Insert Trailer Ball Mount (TBM) into towbar HITCHBOX, aligning hole in TBM SHANK with hole in HITCHBOX (Fig 2).

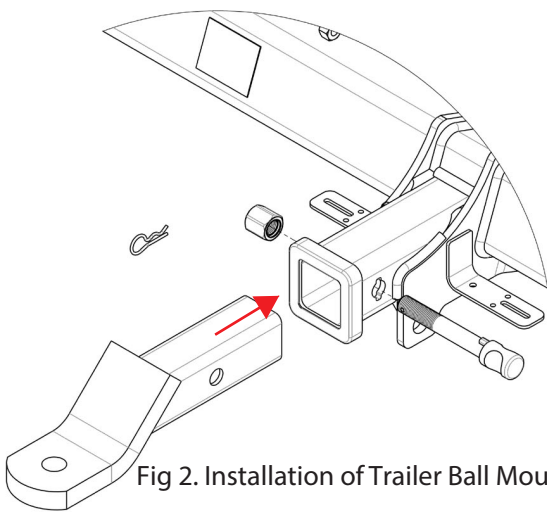


Fig 2. Installation of Trailer Ball Mount

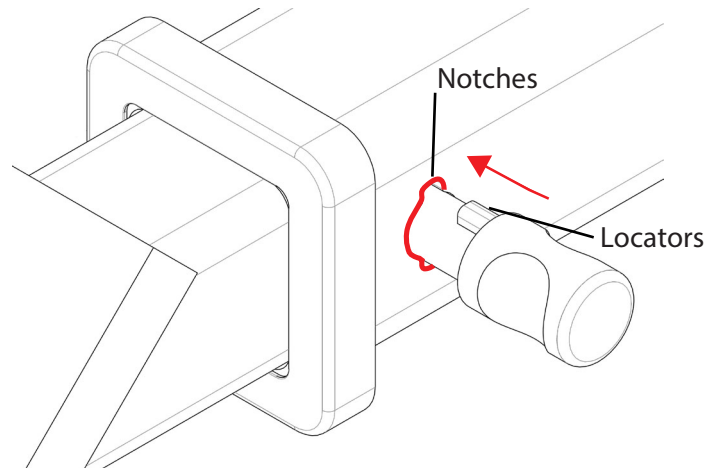


Fig 3. Silent Anti-Rattle Hitch Pin orientation

STEP 2

Insert HITCH PIN through hole in HITCHBOX and hole in TBM SHANK; ensure the LOCATORS are inserted into the NOTCHES in the HITCHBOX (Fig. 3).

STEP 3

Screw HITCH PIN NUT onto HITCH PIN ; tighten HITCH PIN NUT until finger tight, ensuring TBM is restrained from movement.

STEP 4

Tighten HITCH PIN NUT by turning nut a further 1/8th of a turn in the clockwise direction using a 24mm spanner (Fig. 4).

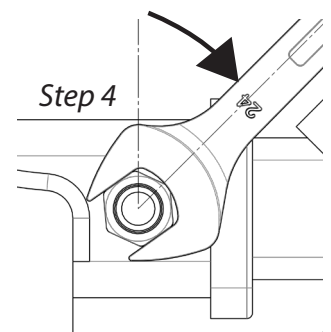


Fig 4. Tightening of Silent Anti-Rattle Hitch Pin Nut

STEP 5

Install HITCH PIN R CLIP through the hole on the HITCH PIN (Fig. 1).